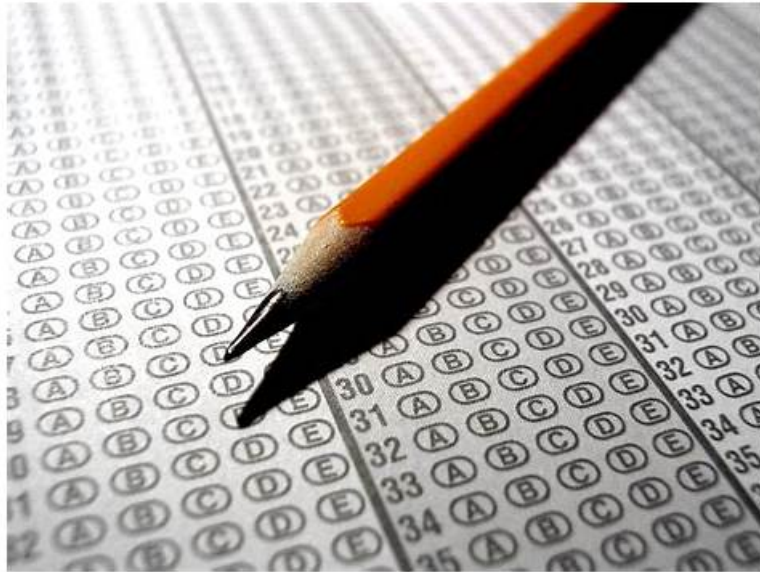


2026 Updated ARA-C01 Test Cram 100% Pass | High Pass-Rate Snowflake New SnowPro Advanced Architect Certification Practice Questions Pass for sure



BONUS!!! Download part of ExamPrepAway ARA-C01 dumps for free: https://drive.google.com/open?id=1uz9RS82mitSCE0YAa_7aGVx3bQN7P58U

We offer you to take back your money, if you do not succeed in ARA-C01 exam. Such a guarantee in itself is concrete evidence on the unmatched quality of our ARA-C01 dumps. For the reason, they are approved not only by a large number of professionals who are busy in developing their careers but also by the industry experts. Get the right reward for your potential, believing in the easiest and to the point ARA-C01 Exam Questions that are meant to bring you a brilliant success in ARA-C01 exams.

One of the unique features of the SnowPro Advanced Architect Certification exam is that it is an online, proctored exam. This means that candidates can take the exam from anywhere in the world, at any time, while being monitored by a proctor through a webcam. This format ensures the integrity and security of the exam, while also providing convenience and flexibility to candidates.

>> Updated ARA-C01 Test Cram <<

New ARA-C01 Practice Questions | ARA-C01 New APP Simulations

We are dedicated to helping you pass the next certificate exam fast. ARA-C01 Exam Braindumps contains questions and answers, and they will be enough for you to deal with your exam. ARA-C01 exam dumps have most of knowledge points of the exam. In the process of practicing, you can also improve your ability. Furthermore, we provide you with free demo for you to have a try before purchasing, so that you can have a better understanding of what you are going to buy. If you indeed have questions, just contact our online service staff.

Obtaining the Snowflake ARA-C01 certification demonstrates that an individual has the skills and expertise to design, implement, and manage complex data solutions on the Snowflake platform. SnowPro Advanced Architect Certification certification is highly valued in the IT industry and can lead to better job opportunities and higher salaries. Additionally, Snowflake ARA-C01 certified professionals can help their organizations to optimize their data solutions and achieve better business outcomes.

Snowflake ARA-C01 Certification is an excellent opportunity for architects and consultants to validate their expertise in Snowflake's data warehousing platform. It is a challenging exam that covers a wide range of advanced topics, and passing the exam demonstrates a deep understanding of Snowflake's architecture and best practices. SnowPro Advanced Architect Certification certification is also recognized globally and can help individuals stand out in a competitive job market.

Snowflake SnowPro Advanced Architect Certification Sample Questions

(Q168-Q173):

NEW QUESTION # 168

What are some of the characteristics of result set caches? (Choose three.)

- A. Each time persisted results for a query are used, a 24-hour retention period is reset.
- B. The retention period can be reset for a maximum of 31 days.
- C. The data stored in the result cache will contribute to storage costs.
- D. Time Travel queries can be executed against the result set cache.
- E. Snowflake persists the data results for 24 hours.
- F. The result set cache is not shared between warehouses.

Answer: A,B,E

Explanation:

Comprehensive and Detailed According to the SnowPro Advanced: Architect documents and learning resources, some of the characteristics of result set caches are:

Snowflake persists the data results for 24 hours. This means that the result set cache holds the results of every query executed in the past 24 hours, and can be reused if the same query is submitted again and the underlying data has not changed¹.

Each time persisted results for a query are used, a 24-hour retention period is reset. This means that the result set cache extends the lifetime of the results every time they are reused, up to a maximum of 31 days from the date and time that the query was first executed¹.

The retention period can be reset for a maximum of 31 days. This means that the result set cache will purge the results after 31 days, regardless of whether they are reused or not. After 31 days, the next time the query is submitted, a new result is generated and persisted¹.

The other options are incorrect because they are not characteristics of result set caches. Option A is incorrect because Time Travel queries cannot be executed against the result set cache. Time Travel queries use the AS OF clause to access historical data that is stored in the storage layer, not the result set cache². Option D is incorrect because the data stored in the result set cache does not contribute to storage costs. The result set cache is maintained by the service layer, and does not incur any additional charges¹.

Option F is incorrect because the result set cache is shared between warehouses. The result set cache is available across virtual warehouses, so query results returned to one user are available to any other user on the system who executes the same query, provided the underlying data has not changed¹. Reference: Using Persisted Query Results | Snowflake Documentation, Time Travel | Snowflake Documentation

NEW QUESTION # 169

When loading data from stage using COPY INTO, what options can you specify for the ON_ERROR clause?

- A. SKIP_FILE
- B. CONTINUE
- C. FAIL
- D. ABORT_STATEMENT

Answer: A,B,D

Explanation:

Explanation

* The ON_ERROR clause is an optional parameter for the COPY INTO command that specifies the behavior of the command when it encounters errors in the files. The ON_ERROR clause can have one of the following values¹:

* CONTINUE: This value instructs the command to continue loading the file and return an error message for a maximum of one error encountered per data file. The difference between the ROWS_PARSED and ROWS_LOADED column values represents the number of rows that include detected errors. To view all errors in the data files, use the VALIDATION_MODE parameter or query the VALIDATE function¹.

* SKIP_FILE: This value instructs the command to skip the file when it encounters a data error on any of the records in the file. The command moves on to the next file in the stage and continues loading. The skipped file is not loaded and no error message is returned for the file¹.

* ABORT_STATEMENT: This value instructs the command to stop loading data when the first error is encountered. The command returns an error message for the file and aborts the load operation. This is the default value for the ON_ERROR clause¹.

* Therefore, options A, B, and C are correct.

References: : COPY INTO <table>

NEW QUESTION # 170

How does a standard virtual warehouse policy work in Snowflake?

- A. It starts only if the system estimates that there is a query load that will keep the cluster busy for at least 2 minutes.
- B. It conserves credits by keeping running clusters fully loaded rather than starting additional clusters.
- **C. It prevents or minimizes queuing by starting additional clusters instead of conserving credits.**
- D. It starts only if the system estimates that there is a query load that will keep the cluster busy for at least 6 minutes.

Answer: C

Explanation:

A standard virtual warehouse policy is one of the two scaling policies available for multi-cluster warehouses in Snowflake. The other policy is economic. A standard policy aims to prevent or minimize queuing by starting additional clusters as soon as the current cluster is fully loaded, regardless of the number of queries in the queue. This policy can improve query performance and concurrency, but it may also consume more credits than an economic policy, which tries to conserve credits by keeping the running clusters fully loaded before starting additional clusters. The scaling policy can be set when creating or modifying a warehouse, and it can be changed at any time.

Reference:

Snowflake Documentation: Multi-cluster Warehouses

Snowflake Documentation: Scaling Policy for Multi-cluster Warehouses

NEW QUESTION # 171

Remote service in external function can be an AWS Lambda function

- **A. TRUE**
- B. FALSE

Answer: A

NEW QUESTION # 172

Which of the below commands will use warehouse credits?

- **A. SELECT COUNT(FLAKE_ID) FROM SNOWFLAKE GROUP BY FLAKE_ID;**
- **B. SELECT COUNT(*) FROM SNOWFLAKE;**
- **C. SELECT MAX(FLAKE_ID) FROM SNOWFLAKE;**
- D. SHOW TABLES LIKE 'SNOWFL%';

Answer: A,B,C

Explanation:

* Warehouse credits are used to pay for the processing time used by each virtual warehouse in Snowflake.

A virtual warehouse is a cluster of compute resources that enables executing queries, loading data, and performing other DML operations. Warehouse credits are charged based on the number of virtual warehouses you use, how long they run, and their size¹.

* Among the commands listed in the question, the following ones will use warehouse credits:

* **SELECT MAX(FLAKE_ID) FROM SNOWFLAKE:** This command will use warehouse credits because it is a query that requires a virtual warehouse to execute. The query will scan the SNOWFLAKE table and return the maximum value of the FLAKE_ID column². Therefore, option B is correct.

* **SELECT COUNT(*) FROM SNOWFLAKE:** This command will also use warehouse credits because it is a query that requires a virtual warehouse to execute. The query will scan the SNOWFLAKE table and return the number of rows in the table³. Therefore, option C is correct.

* **SELECT COUNT(FLAKE_ID) FROM SNOWFLAKE GROUP BY FLAKE_ID:** This command will also use warehouse credits because it is a query that requires a virtual warehouse to execute. The query will scan the SNOWFLAKE table and return the number of rows for each distinct value of the FLAKE_ID column⁴. Therefore, option D is correct.

* The command that will not use warehouse credits is:

* **SHOW TABLES LIKE 'SNOWFL%':** This command will not use warehouse credits because it is a metadata operation that does not require a virtual warehouse to execute. The command will return the names of the tables that match the pattern 'SNOWFL%' in the current database and schema⁵. Therefore, option A is incorrect.

NEW QUESTION # 173

.....

New ARA-C01 Practice Questions: <https://www.examprepaway.com/Snowflake/braindumps.ARA-C01.etc.file.html>

- Pass Guaranteed Snowflake - ARA-C01 - Unparalleled Updated SnowPro Advanced Architect Certification Test Cram Open www.vce4dumps.com and search for **ARA-C01** to download exam materials for free Exam ARA-C01 Quizzes
- Pass Guaranteed Quiz 2026 Latest Snowflake Updated ARA-C01 Test Cram Download **ARA-C01** for free by simply entering www.pdfvce.com website ARA-C01 Download Free Dumps
- Latest ARA-C01 Braindumps Pdf Examcollection ARA-C01 Dumps Torrent Certificate ARA-C01 Exam Immediately open www.examcollectionpass.com and search for « ARA-C01 » to obtain a free download Practice ARA-C01 Exam Fee
- Pass Guaranteed Snowflake - ARA-C01 - Unparalleled Updated SnowPro Advanced Architect Certification Test Cram Search for { ARA-C01 } and obtain a free download on www.pdfvce.com Latest ARA-C01 Test Simulator
- Updated ARA-C01 Test Cram Exam 100% Pass | Snowflake ARA-C01: SnowPro Advanced Architect Certification www.easy4engine.com is best website to obtain **ARA-C01** for free download Practice ARA-C01 Exam Fee
- Don't Waste Time Preparing for Snowflake ARA-C01 Exam. Crack it Instantly with This Proven Method Simply search for ARA-C01 for free download on « www.pdfvce.com » Download ARA-C01 Fee
- Certificate ARA-C01 Exam ARA-C01 Exam Questions Fee ARA-C01 Reliable Braindumps Ppt Download **ARA-C01** for free by simply searching on www.testkingpass.com ARA-C01 Real Torrent
- Pass Guaranteed 2026 Snowflake ARA-C01: Authoritative Updated SnowPro Advanced Architect Certification Test Cram Open « www.pdfvce.com » enter **ARA-C01** and obtain a free download Exam ARA-C01 Quizzes
- ARA-C01 Reliable Dumps Files ARA-C01 Exam Questions Fee ARA-C01 Real Torrent Search for **ARA-C01** and download it for free immediately on www.prepawaypdf.com ARA-C01 Reliable Exam Tutorial
- Latest ARA-C01 Test Simulator Latest ARA-C01 Test Cost Download ARA-C01 Fee Simply search for ARA-C01 for free download on [www.pdfvce.com] Certificate ARA-C01 Exam
- ARA-C01 Valid Test Voucher ARA-C01 Passguide Latest ARA-C01 Test Cost The page for free download of **ARA-C01** on www.dumpsmaterials.com will open immediately ARA-C01 Valid Test Voucher
- kaeuchi.jp, joyceaobn754322.gynoblog.com, haseebscnr260423.wikibuysell.com, maximusbookmarks.com, bookmarkforce.com, bookmarksea.com, nellmrhv559326.birderswiki.com, ezmarkbookmarks.com, bookmarkuse.com, emiliemxy025262.tdlwiki.com, Disposable vapes

P.S. Free & New ARA-C01 dumps are available on Google Drive shared by ExamPrepAway: https://drive.google.com/open?id=1uz9RS82mitSCE0YAa_7aGVx3bQN7P58U