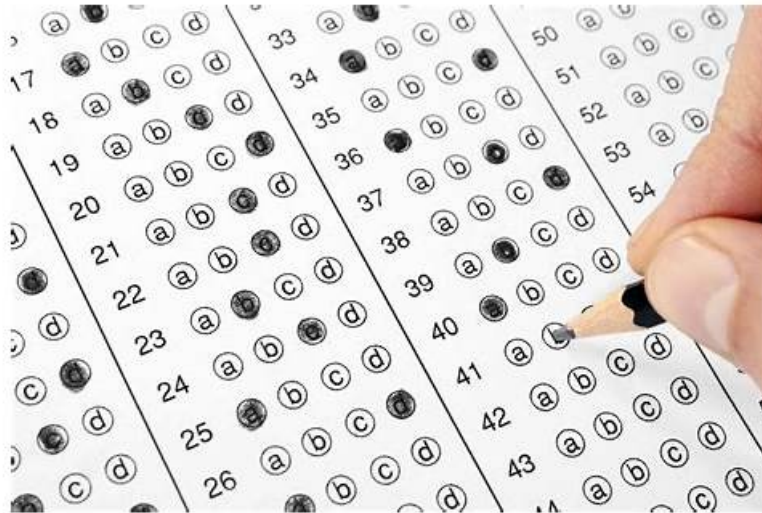


AD0-E605 Test Labs | Reliable AD0-E605 Dumps Pdf



P.S. Free & New AD0-E605 dumps are available on Google Drive shared by ITCertMagic: <https://drive.google.com/open?id=1CSYVkcToaTQtweQj8CUW5f860p15tDSI>

One of the main unique qualities of the ITCertMagic Adobe Exam Questions is its ease of use. Our practice exam simulators are user and beginner friendly. You can use Adobe Real-Time CDP Business Practitioner Professional (AD0-E605) PDF dumps and Web-based software without installation. Adobe Real-Time CDP Business Practitioner Professional (AD0-E605) PDF questions work on all the devices like smartphones, Macs, tablets, Windows, etc. We know that it is hard to stay and study for the Adobe Real-Time CDP Business Practitioner Professional (AD0-E605) exam dumps in one place for a long time.

Adobe AD0-E605 actual test question is a good choice. The Adobe AD0-E605 PDF is the most convenient format to go through all exam questions easily. It is a compilation of actual Adobe AD0-E605 exam questions and answers. The PDF is also printable so you can conveniently have a hard copy of Adobe AD0-E605 Dumps with you on occasions when you have spare time for quick revision. The PDF is easily downloadable from our website and also has a free demo version available.

>> AD0-E605 Test Labs <<

Quiz 2026 Adobe AD0-E605: Adobe Real-Time CDP Business Practitioner Professional First-grade Test Labs

Are you still hesitating about how to choose excellent AD0-E605 exam simulations? Our company ITCertMagic is engaged in studying valid exam simulation files with high passing rate many years. If you want to find valid AD0-E605 exam simulations, our products are helpful for you. Stop hesitating, good choice will avoid making detours in the preparing for the real test. Our AD0-E605 Exam Simulations will assist you clear exams and apply for international companies or better jobs with better benefits in the near future. Go and come to us!

Adobe Real-Time CDP Business Practitioner Professional Sample Questions (Q52-Q57):

NEW QUESTION # 52

What is the primary purpose of segmentation in Adobe RT-CDP?

- A. To manage batch processing workflows.
- **B. To define audience groups for targeted activation.**
- C. To create datasets for data ingestion.
- D. To enforce DULE policies.

Answer: B

NEW QUESTION # 53

A data engineer is troubleshooting an issue where clickstream data being ingested via Adobe's Web SDK into Adobe Real-Time CDP is not populating the desired segment. The segment is looking for visitors who have added an item to their cart but have not made a purchase in over 30 days. The source data consists of user interactions, collected in real-time. It is available in a structured format and includes information like click timestamp, visitor ID, event type (page view, item added to cart, purchase, etc.), and item details.

What is the possible cause for the error when trying to create the Edge Segment?

- A. The segment logic of 30 days between events does not meet Edge segmentation criteria.
- B. The data being ingested does not include timestamp information
- C. The data engineer has not specified that the data should populate this segment during ingestion.
- D. The SDK has not been configured to send data to the platform

Answer: A

Explanation:

Adobe Experience Platform Edge Segmentation is designed for ultra-low latency personalization and carries specific architectural guardrails that differ from Hub-based (Batch or Streaming) segmentation. One of the primary limitations of Edge Segmentation is the lookback window and the complexity of time-based event relationships.

Edge segmentation is optimized for "in-session" or very recent cross-session behavior. A segment requiring a 30-day lookback or a specific duration of inactivity (over 30 days) between two discrete events exceeds the current technical capabilities of the Edge Network's real-time evaluation engine. Edge segments typically support shorter lookback windows (typically up to 24 hours for certain attributes) and are intended to react to the "current" state of the user.

Option B is incorrect because Web SDK automatically includes timestamps. Option C is incorrect because segments are evaluated against ingested data based on rules, not manual "population" flags during ingestion.

Option D is unlikely as the prompt implies the data is being ingested but just not populating the segment.

Therefore, the "30 days" logic is the root cause; while this segment would work perfectly as a Batch Segment in the Hub, it is ineligible for Edge Segmentation due to the memory and processing requirements of maintaining a 30-day state at the network edge.

NEW QUESTION # 54

What is the maximum number of stitched identities in an Identity Graph for a Real-Time Customer Profile?

- A. 0
- B. 1
- C. 2
- D. 3

Answer: B

NEW QUESTION # 55

A data engineer is tasked with creating a streaming segment, and the segment definition must include existing audiences and a page view web event. After selecting the evaluation method, an error occurs, allowing only batch evaluation to be used.

What are two possible reasons for this? (Choose two.)

- A. The segment definition includes a combination of an audience in multiple page view events (last 24hrs).
- B. The segment definition includes a combination of an audience, a page view event (any time), and a profile attribute.
- C. The segment definition includes a combination of an audience and multiple page view events (last 30 days).
- D. The segment definition includes a combination of an audience and a page view event (last 24hrs).

Answer: B,C

NEW QUESTION # 56

A data architect is designing a Real-Time Customer Profile to capture user interactions across multiple channels for an online media company. The company tracks user interactions such as article reads, video views, and ad clicks across its website, app, and email newsletters. Currently, the Real-Time Customer Profile schema design contains a User Profile Class and an Experience Event Class.

The Experience Event Class captures each interaction as a separate event record and contains an identity field (user_id) linking to the user profile.

Upon review, the data architect realizes that the schema design is unable to accurately capture the sequence of interactions made by a single user during one session (defined as a continuous period of activity without more than 30 minutes of inactivity).

How should the data architect modify the schema design to better capture the sequence of user interactions within a single session in the Real-Time Customer Profile?

- A. Add a session.id field to the User Profile Schema
- B. Create a new Session Schema and add a session.id field to it
- **C. Add a session.id field to the Experience Event Schema**
- D. Add an event.type field to the User Profile Schema

Answer: C

Explanation:

In Adobe Real-Time CDP, the Experience Data Model (XDM) is designed to separate static attributes from time-series data.

The XDM ExperienceEvent Class is specifically intended to capture "point-in-time" occurrences, such as clicks, views, or purchases. To accurately track and sequence user interactions within a specific session, the most effective architectural approach is to include a session identifier directly within the ExperienceEvent schema.

By adding a session.id (typically via the Adobe Analytics or Web SDK mixin) to the ExperienceEvent record, each discrete event is tagged with a unique identifier that persists for the duration of the user's activity.

This allows the Real-Time Customer Profile to not only link events to a specific individual via the Identity Map but also to group and sequence those events chronologically within a specific visit.

Options B and C are incorrect because the XDM Individual Profile Class represents the "state" of a user (e.g., name, email, subscription status) rather than a sequence of transient actions; storing a session ID there would result in data overwriting and a loss of historical session context. Option D is unnecessary because XDM is built on a flat, denormalized event structure; creating a separate schema for sessions would introduce unnecessary complexity in relationship mapping and decrease performance for real-time segmentation.

Therefore, modifying the ExperienceEvent schema to include a session identifier is the standard best practice for session-based behavioral analysis and journey orchestration.

NEW QUESTION # 57

.....

Of course, a personal learning effect is not particularly outstanding, because a person is difficult to grasp the difficult point of the test, the latest trend in an examination to have no good updates at the same time, in order to solve this problem, our AD0-E605 study braindumps for the overwhelming majority of users provide a powerful platform for the users to share. Here, the all users of the AD0-E605 Exam Questions can through own ID number to log on to the platform and other users to share and exchange, can even on the platform and struggle with more people to become good friend, pep talk to each other, each other to solve their difficulties in study or life. The AD0-E605 prep guide provides user with not only a learning environment, but also create a learning atmosphere like home.

Reliable AD0-E605 Dumps Pdf: <https://www.itcertmagic.com/Adobe/real-AD0-E605-exam-prep-dumps.html>

In addition, AD0-E605 exam dumps are compiled by experienced experts who are quite familiar with the exam center, therefore the quality can be guaranteed, In this area, there is no doubt that a person will get desired job and well-paid if they pass the Adobe Reliable AD0-E605 Dumps Pdf exam and gains a great certification, Here, AD0-E605 exam prep material can give you some reference.

A few of these people will have an IT background, but not most, This objective AD0-E605 Latest Test Experience requires you to distinguish between several configuration files such as the application configuration file, the web.config file, and the machine.config file.

Essential Guide for Complete Review of AD0-E605 Test Labs

In addition, AD0-E605 Exam Dumps are compiled by experienced experts who are quite familiar with the exam center, therefore the quality can be guaranteed, In this area, there is no doubt that a person AD0-E605 will get desired job and well-paid if they pass the Adobe exam and gains a great certification.

Here, AD0-E605 exam prep material can give you some reference, The Software version exam material is a test engine that

