

MD-102최신시험 - MD-102최신업데이트버전덤프문제 공부



2026 Fast2test 최신 MD-102 PDF 버전 시험 문제집과 MD-102 시험 문제 및 답변 무료 공유:
<https://drive.google.com/open?id=1iRSD0eL3szb2BCEymsUwcopOx0JExVrw>

Microsoft MD-102 시험 기출문제를 애타게 찾고 계시나요? Fast2test의 Microsoft MD-102덤프는Microsoft MD-102최신 시험의 기출문제뿐만 아니라 정답도 표기되어 있고 저희 전문가들의 예상문제도 포함되어있어 한방에 응시자분들의 고민을 해결해드립니다. 구매후 시험문제가 변경되면 덤프도 시험문제변경에 따라 업데이트하여 무료로 제공해드립니다.

Microsoft MD-102 시험요강:

주제	소개
주제 1	<ul style="list-style-type: none"> Protect devices: In this topic, aspiring administrators get knowledge about configuration of endpoint security and management of device updates by using Intune.
주제 2	<ul style="list-style-type: none"> Manage applications: This section covers skills to manage application implementation, manage updates, and manage performance to support the performance of users to meet the needs of business organizations.
주제 3	<ul style="list-style-type: none"> Prepare infrastructure for devices: This topic focuses on adding devices to Microsoft Entra ID and enrolling devices to Microsoft Intune.
주제 4	<ul style="list-style-type: none"> Manage and maintain devices: This section deals with managing, troubleshooting, and safeguarding various devices. It also covers methods to ensure that they meet organizational policies and security standards.

>> MD-102최신시험 <<

MD-102최신 업데이트버전 덤프문제공부 - MD-102최신덤프자료

Microsoft MD-102 덤프에 대한 자신감이 어디서 시작된것이나고 물으신다면Microsoft MD-102덤프를 구매하여 시험을 패스한 분들의 회소식에서 온다고 답해드리고 싶습니다. 저희Microsoft MD-102덤프는 자주 업데이트되고 오래된 문제는 바로 삭제해버리고 최신 문제들을 추가하여 고객님의 가장 정확한 덤프를 제공드릴수 있도록 하고 있습니다.

최신 Microsoft 365 Certified MD-102 무료 샘플문제 (Q330-Q335):

질문 # 330

You need to meet the technical requirements for the iOS devices.
 Which object should you create in Intune?

- A. A device configuration profile
- B. A Deployment profile
- C. A compliance policy
- D. An app protection policy

정답: A

설명:

References:

<https://docs.microsoft.com/en-us/intune/device-restrictions-configure>

<https://docs.microsoft.com/en-us/intune/device-restrictions-ios>

질문 # 331

You use the Microsoft Deployment Toolkit (MDT) to deploy Windows 11.

You create a new task sequence by using the Standard Client Task Sequence template to deploy Windows 11 Enterprise to new computers. The computers have a single hard disk.

You need to modify the task sequence to create a system volume and a data volume.

Which phase should you modify in the task sequence?

- A. Preinstall
- B. Initialization
- C. State Restore
- D. Postinstall

정답: A

설명:

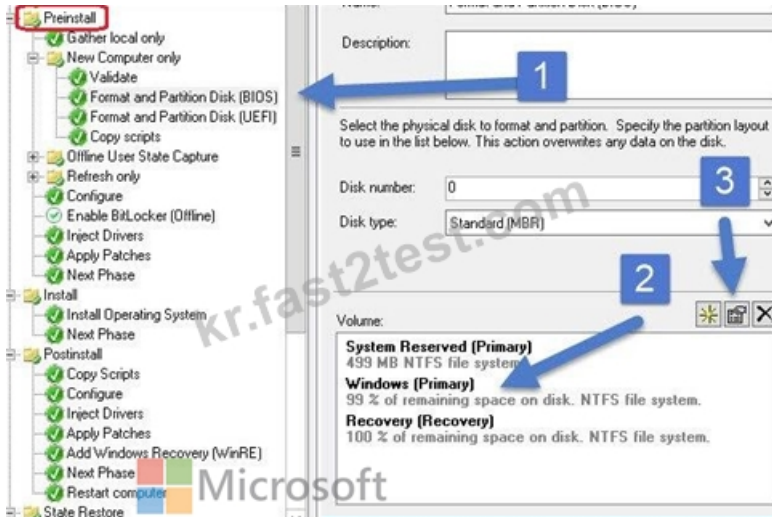
Step 1 - Create Extra Partition in MDT

1. First we will look to create extra partition in MDT. We will create a new task sequence for a machine that doesn't have an extra partition. Specify the TS name and comments. Click Next.

2. On the Select Template page, click the drop-down and select Standard Client Task Sequence.

Complete the remaining steps.

3. Edit the task sequence and click the New Computer only step. Within that step, click Format and Partition Disk(BIOS) step and edit it.



Etc.

Reference:

<https://www.prajwaldesai.com/create-extra-partition-in-mdt/-mdt/>

질문 # 332

You have an Azure Active Directory Premium Plan 2 subscription that contains the users shown in the following table.

Name	Member of	Assigned license
User1	Group1	Enterprise Mobility + Security E5
User2	Group2	Enterprise Mobility + Security E5

You purchase the devices shown in the following table.

Name	Type
Device1	Windows 10
Device2	Android

You configure automatic mobile device management (MDM) and mobile application management (MAM) enrollment by using the following settings:

MDM user scope: Group1

MAM user scope: Group2

For each of the following statements, select Yes if the statement is true. Otherwise, select No.

NOTE: Each correct selection is worth one point.

Statements	Yes	No
If User1 registers Device1 in contoso.com, Device1 is enrolled automatically in Microsoft Intune.	<input type="radio"/>	<input type="radio"/>
If User1 joins Device1 to contoso.com, Device2 is enrolled automatically in Microsoft Intune.	<input type="radio"/>	<input type="radio"/>
If User2 registers Device3 in contoso.com, Device3 is enrolled automatically in Microsoft Intune.	<input type="radio"/>	<input type="radio"/>

정답:

설명:

Statements	Yes	No
If User1 registers Device1 in contoso.com, Device1 is enrolled automatically in Microsoft Intune.	<input checked="" type="radio"/>	<input type="radio"/>
If User1 joins Device1 to contoso.com, Device2 is enrolled automatically in Microsoft Intune.	<input type="radio"/>	<input checked="" type="radio"/>
If User2 registers Device3 in contoso.com, Device3 is enrolled automatically in Microsoft Intune.	<input type="radio"/>	<input checked="" type="radio"/>

Reference:

<https://powerautomate.microsoft.com/fr-fr/blog/mam-flow-mobile/>

질문 # 333

You have a Microsoft 365 subscription that contains the devices shown in the following table.

Name	RAM	Storage	TPM version
Device1	14 GB	256 GB	1.2
Device2	4 GB	64 GB	2.0
Device3	8 GB	128 GB	2.0

All the devices will be reimaged and licensed by using subscription activation.

The devices are assigned to the users shown in the following table.

Name	Device	License
User1	Device1	Microsoft 365 E5
User2	Device2	Microsoft 365 E3
User3	Device3	Office 365 E5, Enterprise Mobility + Security E5

For each of the following statements, select Yes if the statement is true. Otherwise, select No.
NOTE: Each correct selection is worth one point.

Statements	Yes	No
Device1 can be upgraded to Windows 11 and activated.	<input type="radio"/>	<input type="radio"/>
Device2 requires additional hardware before it can be upgraded to Windows 11.	<input type="radio"/>	<input type="radio"/>
User3 requires an additional license to activate Windows 11 on Device3.	<input type="radio"/>	<input type="radio"/>

정답:

설명:

Statements	Yes	No
Device1 can be upgraded to Windows 11 and activated.	<input type="radio"/>	<input checked="" type="radio"/>
Device2 requires additional hardware before it can be upgraded to Windows 11.	<input type="radio"/>	<input checked="" type="radio"/>
User3 requires an additional license to activate Windows 11 on Device3.	<input checked="" type="radio"/>	<input type="radio"/>

Explanation:

Statements	Yes	No
Device1 can be upgraded to Windows 11 and activated.	<input type="radio"/>	<input checked="" type="radio"/>
Device2 requires additional hardware before it can be upgraded to Windows 11.	<input type="radio"/>	<input checked="" type="radio"/>
User3 requires an additional license to activate Windows 11 on Device3.	<input checked="" type="radio"/>	<input type="radio"/>

질문 # 334

You have a Microsoft 365 subscription. The subscription contains 1,000 computers that run Windows 11 and are enrolled in Microsoft Intune.

You plan to create a compliance policy that has the following options enabled:

- * Require Secure Boot to be enabled on the device.
- * Require the device to be at or under the machine risk score.

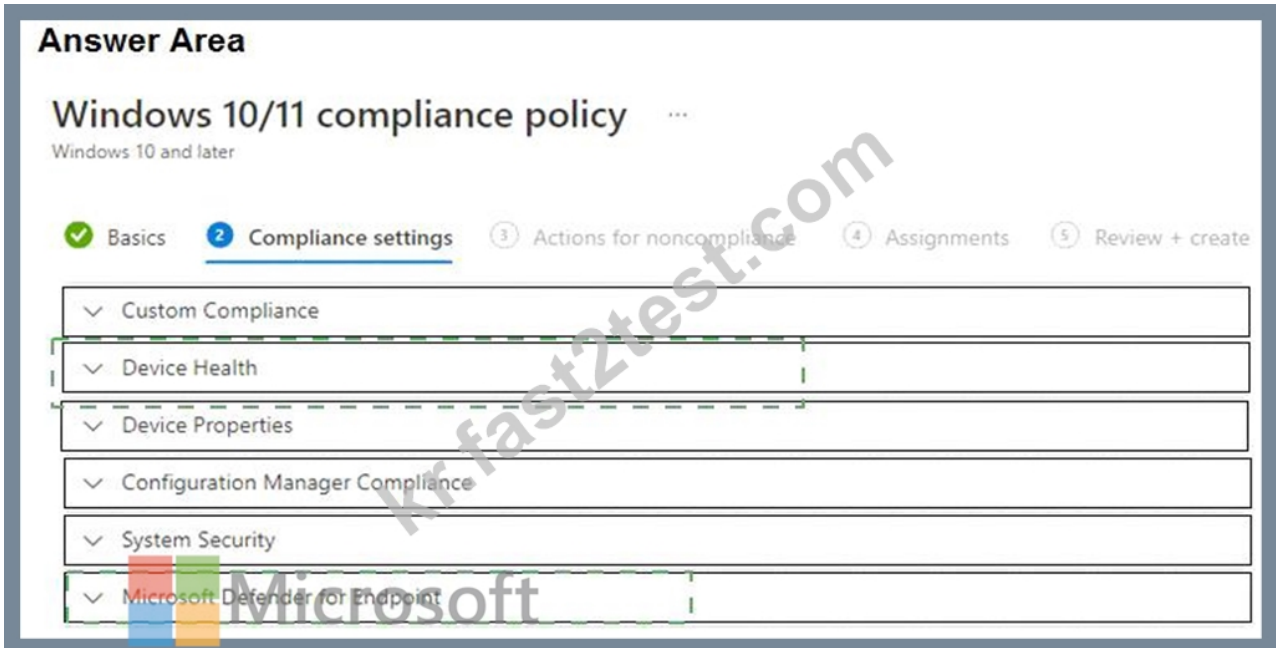
Which two Compliance settings should you configure? To answer, select the appropriate settings in the answer area.

NOTE: Each correct selection is worth one point.



정답:

설명:



Explanation:

Device health

<https://learn.microsoft.com/en-us/mem/intune/enrollment/windows-enrollment-status> Microsoft Defender for Endpoint

<https://learn.microsoft.com/en-us/mem/intune/protect/compliance-policy-create-windows#microsoft-defender-for>

질문 # 335

.....

많은 사이트에서 Microsoft 인증 MD-102 인증 시험 대비 자료를 제공하고 있습니다. 그중에서 Fast2test를 선택한 분들은 Microsoft 인증 MD-102 시험 통과와 지름길에 오른 것과 같습니다. Fast2test는 시험에서 불합격 성적표를 받으시면 덤프 비용을 환불하는 서비스를 제공해 드려 아무런 걱정 없이 시험에 도전하도록 힘이 되어 드립니다. Fast2test 덤프를 사용하여 시험에서 통과하신 분이 전해 주신 희소식이 Fast2test 덤프 품질을 증명해 드립니다.

MD-102 최신 업데이트 버전 덤프 문제 공부 : <https://kr.fast2test.com/MD-102-premium-file.html>

- MD-102 인기 자격증 시험 덤프 최신 자료 □ MD-102 인증 시험 대비 덤프 공부 □ MD-102 높은 통과율 시험 덤프 공부 □ 검색만 하면 ▶ www.itdumpskr.com 에서 《 MD-102 》 무료 다운로드 MD-102 시험 응시

- MD-102최신시험 시험준비에 가장 좋은 인기시험 기출문제자료 □ “www.itdumpskr.com”웹사이트에서▶▶ MD-102 □를 열고 검색하여 무료 다운로드MD-102완벽한 공부자료
- MD-102최신시험 퍼펙트한 덤프구매후 60일내 주문은 불합격시 환불가능 □ 시험 자료를 무료로 다운로드 하려면▶▶ www.itdumpskr.com □을 통해[MD-102]를 검색하십시오MD-102최신 업데이트버전 덤프공부
- MD-102퍼펙트 덤프 최신 샘플 □ MD-102인증시험대비 덤프공부 □ MD-102높은 통과율 덤프데모문제 □ □ 【 www.itdumpskr.com 】의 무료 다운로드⇒ MD-102 ◀페이지가 지금 열립니다MD-102적중을 높은 시험덤프자료
- MD-102높은 통과율 공부문제 □ MD-102퍼펙트 덤프 최신 샘플 □ MD-102완벽한 덤프 □ □ www.exampassdump.com □웹사이트를 열고▶▶ MD-102 □를 검색하여 무료 다운로드MD-102최고품질 덤프문제보기
- 최신 업데이트된 MD-102최신시험 덤프문제 □ 【 www.itdumpskr.com 】에서 【 MD-102 】를 검색하고 무료로 다운로드하세요MD-102덤프문제집
- MD-102적중을 높은 시험덤프자료 □ MD-102높은 통과율 공부문제 □ MD-102최신버전 인기 시험자료 □ □ ▶▶ MD-102 □를 무료로 다운로드하려면 《 www.exampassdump.com 》 웹사이트를 입력하세요MD-102높은 통과율 시험덤프공부
- MD-102높은 통과율 시험덤프공부 □ MD-102덤프샘플문제 □ MD-102높은 통과율 시험덤프공부 □ 무료로 다운로드하려면□ www.itdumpskr.com □로 이동하여{ MD-102 }를 검색하십시오MD-102인증시험대비 덤프공부
- MD-102적중을 높은 시험덤프자료 □ MD-102인증공부문제 □ MD-102퍼펙트 덤프 최신 샘플 □ 시험 자료를 무료로 다운로드하려면* www.itdumpskr.com □*□을 통해□ MD-102 □를 검색하십시오MD-102완벽한 덤프
- MD-102최신시험 퍼펙트한 덤프구매후 60일내 주문은 불합격시 환불가능 □ ▶▶ www.itdumpskr.com □□□웹사이트에서□ MD-102 □를 열고 검색하여 무료 다운로드MD-102최신 업데이트버전 덤프공부
- 시험패스에 유효한 MD-102최신시험 덤프로 시험패스 도전! □ 무료 다운로드를 위해 지금▶▶ www.koreadumps.com ◀에서⇒ MD-102 ◀검색MD-102완벽한 공부자료
- janaxmfg049226.birderswiki.com, fatallisto.com, harmonygkcz372285.goabroadblog.com, sairagtef893484.life3dblog.com, chiaraxeqy073950.angelinsblog.com, socialbookmarkgs.com, nicoleucxp196248.bloguerosa.com, shaniaugbf205014.kylieblog.com, businessbookmark.com, orlandotqhd425848.blogcudinti.com, Disposable vapes

BONUS!!! Fast2test MD-102 시험 문제집 전체 버전을 무료로 다운로드하세요: <https://drive.google.com/open?id=1iRSD0eL3szb2BCEymsUwcopOx0JExVrw>