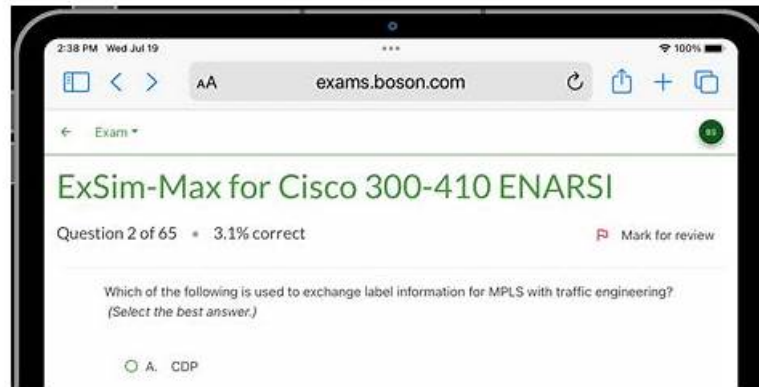


# Cisco 300-410 Reliable Test Test & 300-410 Exam Reference



P.S. Free 2025 Cisco 300-410 dumps are available on Google Drive shared by ITexamReview: <https://drive.google.com/open?id=1XMLE-Jr4Jk-nAeJKZl2zi4hyEt36vCKR>

Where there is life, there is hope. Never abandon yourself. You still have many opportunities to counterattack. If you are lack of knowledge and skills, our 300-410 guide questions are willing to offer you some help. Actually, we are glad that our 300-410 Study Materials are able to become you top choice. Just look at the warm feedbacks from our 300-410 learning braindumps, we are very popular in the whole market. And our 300-410 exam guide won't let you down.

Cisco 300-410: Implementing Cisco Enterprise Advanced Routing and Services (ENARSI) exam is a challenging certification that requires a comprehensive understanding of advanced routing and services technologies. Implementing Cisco Enterprise Advanced Routing and Services certification is a valuable credential for network professionals who are looking to advance their career and demonstrate their expertise in this field.

>> Cisco 300-410 Reliable Test Test <<

## Cisco 300-410 Exam Reference & New 300-410 Test Registration

Our 300-410 prep material target all users and any learners, regardless of their age, gender and education background. We provide 3 versions for the clients to choose based on the consideration that all the users can choose the most suitable version to learn. The 3 versions each support different using method and equipment and the client can use the 300-410 Exam Dump on the smart phones, laptops or the tablet computers. The clients can choose the version which supports their equipment on their hands to learn.

Cisco 300-410 Exam is part of the CCNP Enterprise certification program, which is aimed at network engineers and administrators who are responsible for designing, deploying, and managing enterprise networks. Implementing Cisco Enterprise Advanced Routing and Services certification program includes several other exams, such as the 350-401 exam, which covers core enterprise technologies, and the 300-415 exam, which focuses on implementing Cisco SD-WAN solutions. The CCNP Enterprise certification is recognized globally as a benchmark for advanced networking skills and knowledge.

## Cisco Implementing Cisco Enterprise Advanced Routing and Services Sample Questions (Q231-Q236):

### NEW QUESTION # 231

Refer to the exhibit. A network administrator successfully logs in to a switch using SSH from a RADIUS server. When the network administrator uses a console port to access the switch, the RADIUS server returns `shell:priv-lvl=15` and the switch asks to enter the enable command.

When the command is entered, it gets rejected.

Which command set is used to troubleshoot and resolve this issue?

```

aaa new-model
aaa group server radius RADIUS-SERVERS
aaa authentication login default group RADIUS-SERVERS local
aaa authentication enable default group RADIUS-SERVERS enable
aaa authorization exec default group RADIUS-SERVERS if-authenticated
aaa authorization network default group RADIUS-SERVERS if-authenticated
aaa accounting send stop-record authentication failure
aaa session-id common
!
line con 0
logging synchronous
stopbits 1
line vty 0 4
logging synchronous
transport input ssh

```

- A. line con 0  
aaa authorization console  
authorization exec  
!  
line vty 0 4  
transport input ssh
- B. line con 0  
aaa authorization console  
authorization priv15  
!  
line vty 0 4  
transport input ssh
- C. line con 0  
aaa authorization console priv15  
!  
line vty 0 4  
authorization exec
- D. line con 0  
aaa authorization console  
!  
line vty 0 4  
authorization exec

**Answer: A**

#### **NEW QUESTION # 232**

Refer to the exhibit.

```

Router#show access-lists
Standard IP access list 1
    10 permit 192.168.2.2 (1 match)
Router#
Router#show route-map
route-map RM-OSPF-DL, permit, sequence 10
  Match clauses:
    ip address (access-lists): 1
  Set clauses:
  Policy routing matches: 0 packets, 0 bytes
Router#
Router#show running-config | section ospf
router ospf 1
  network 192.168.1.1 0.0.0.0 area 0
  network 192.168.12.0 0.0.0.255 area 0
  distribute-list route-map RM-OSPF-DL in
Router#

```

An engineer is trying to block the route to 192.168.2.2 from the routing table by using the configuration that is shown. The route is still present in the routing table as an OSPF route. Which action blocks the route?

- A. Use a prefix list instead of an access list in the route map.
- B. Add this statement to the route map: route-map RM-OSPF-DL deny 20.
- C. Change sequence 10 in the route-map command from permit to deny.
- D. Use an extended access list instead of a standard access list.

Answer: C

#### NEW QUESTION # 233

Refer to the exhibit.

```

CPE# ping 10.0.2.4
Type escape sequence to abort.
Sending 5, 100-byte ICMP Echos to 10.0.2.4, timeout is 2
seconds:
!!!!
Success rate is 100 percent (5/5), round-trip min/avg/max =
1/1/1 ms
CPE# copy flash:/packages.conf tftp://10.0.2.4/
Address or name of remote host [10.0.2.4]?
Destination filename [packages.conf]?
%Error opening tftp://10.0.2.4/packages.conf (Undefined error)

```

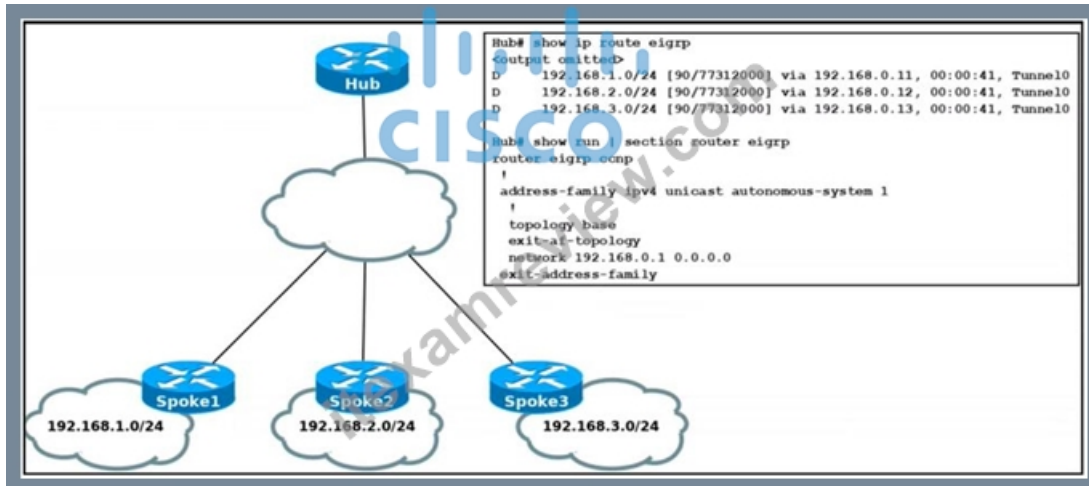
The administrator is trying to overwrite an existing file on the TFTP server that was previously uploaded by another router. However, the attempt to update the file fails. Which action resolves this issue?

- A. Make the packages.conf file writable by all on the TFTP server
- B. Make sure to run the TFTP service on the TFTP server
- C. Make the TFTP folder writable by all on the TFTP server
- D. Make the packages.conf file executable by all on the TFTP server

Answer: A

#### NEW QUESTION # 234

Refer to the exhibit.



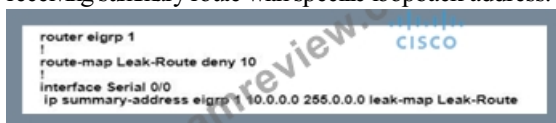
Spoke routers do not learn about each other's routes in the DMVPN Phase2 network. Which action resolves the issue?

- A. Rectify incorrect wildcard mask configured on the hub router network command.
- B. Disable EIGRP split horizon on the Tunnel0 interface of the hub router.
- C. Configure a static route in each spoke to establish a spoke-to-spoke tunnel.
- D. Remove default route from spoke routers to establish a spoke-to-spoke tunnel.

Answer: B

#### NEW QUESTION # 235

An engineer configured a leak-map command to summarize EIGRP routes and advertise specifically loopback 0 with an IP of 10.1.1.1.255.255.255.252 along with the summary route. After finishing configuration, the customer complained not receiving summary route with specific loopback address. Which two configurations will fix it? (Choose two.)



- A. Configure access-list 1 permit 10.1.1.0.0.0.0.3.
- B. Configure route-map Leak-Route permit 10 and match access-list 1.
- C. Configure route-map Leak-Route permit 20.
- D. Configure access-list 1 permit 10.1.1.1.0.0.0.252.
- E. Configure access-list 1 and match under route-map Leak-Route.

Answer: A,B

Explanation:

Explanation

When you configure an EIGRP summary route, all networks that fall within the range of your summary are suppressed and no longer advertised on the interface. Only the summary route is advertised. But if we want to advertise a network that has been suppressed along with the summary route then we can use leak-map feature. The below commands will fix the configuration in this question:

R1(config)#access-list 1 permit 10.1.1.0 0.0.0.3

R1(config)#route-map Leak-Route permit 10 // this command will also remove the "route-map Leak-Route deny 10" command.

R1(config-route-map)#match ip address 1

## NEW QUESTION # 236

.....

**300-410 Exam Reference:** <https://www.itexamreview.com/300-410-exam-dumps.html>

- Regular Updates in Real Cisco 300-410 Exam Questions ☐ Enter ➡ [www.prep4away.com](http://www.prep4away.com) ☐ and search for > 300-410 < to download for free ☐ Reliable 300-410 Study Notes
- 300-410 Reliable Test Dumps ☐ New 300-410 Exam Guide ☐ Actual 300-410 Test Answers ☐ Simply search for { 300-410 } for free download on ☐ [www.pdfvce.com](http://www.pdfvce.com) ☐ 300-410 Useful Dumps
- 300-410 Certified ☐ 300-410 Valid Exam Pdf ☐ New 300-410 Exam Guide \* Search for 「 300-410 」 and download exam materials for free through ➡ [www.testkingpdf.com](http://www.testkingpdf.com) ☐ Simulated 300-410 Test
- 300-410 Reliable Test Test - High-Efficient 300-410 Exam Reference and Correct New Implementing Cisco Enterprise Advanced Routing and Services Test Registration ☐ Enter [ [www.pdfvce.com](http://www.pdfvce.com) ] and search for ➡ 300-410 ☐ ☐ to download for free ↗ 300-410 Study Reference
- Reliable 300-410 Study Notes • Valid 300-410 Exam Experience ☐ 300-410 Real Exam Questions ☐ Download ( 300-410 ) for free by simply searching on ☐ [www.prep4pass.com](http://www.prep4pass.com) ☐ 300-410 Valid Exam Online
- Latest 300-410 Exam Duration ☐ Reliable 300-410 Study Notes ☐ 300-410 Real Exam Questions \ Download ☐ 300-410 ☐ for free by simply searching on “ [www.pdfvce.com](http://www.pdfvce.com) ” ☐ Exam 300-410 Answers
- Simulated 300-410 Test ☐ 300-410 Valid Exam Online ☐ 300-410 Certified ☐ ☐ [www.torrentvce.com](http://www.torrentvce.com) ☐ is best website to obtain 【 300-410 】 for free download ☐ Valid 300-410 Exam Sims
- Regular Updates in Real Cisco 300-410 Exam Questions ☐ Search for ✓ 300-410 ☐ ✓ ☐ and download it for free on ☐ [www.pdfvce.com](http://www.pdfvce.com) ☐ website ☐ 300-410 Real Exam Questions
- Cisco 300-410 PDF Questions - Great Exam Study Tips ☐ Go to website “ [www.torrentvalid.com](http://www.torrentvalid.com) ” open and search for ▶ 300-410 ◀ to download for free ☐ 300-410 Certified
- 300-410 Valid Exam Online ✂ New 300-410 Exam Guide ☐ Valid 300-410 Exam Sims ☐ Search for 【 300-410 】 and easily obtain a free download on ☐ [www.pdfvce.com](http://www.pdfvce.com) ☐ New 300-410 Exam Guide
- Quiz Cisco - 300-410 - High Pass-Rate Implementing Cisco Enterprise Advanced Routing and Services Reliable Test Test ☐ ➡ [www.prep4sures.top](http://www.prep4sures.top) ☐ is best website to obtain > 300-410 < for free download ☐ 300-410 Certified
- [cou.alnoor.edu.iq](http://cou.alnoor.edu.iq), [epstopikkorea.id](http://epstopikkorea.id), [www.stes.tyc.edu.tw](http://www.stes.tyc.edu.tw), [digiworldwise.online](http://digiworldwise.online), [www.stes.tyc.edu.tw](http://www.stes.tyc.edu.tw), [www.stes.tyc.edu.tw](http://www.stes.tyc.edu.tw), [myportal.utt.edu.tt](http://myportal.utt.edu.tt), [myportal.utt.edu.tt](http://myportal.utt.edu.tt), [myportal.utt.edu.tt](http://myportal.utt.edu.tt), [myportal.utt.edu.tt](http://myportal.utt.edu.tt), [myportal.utt.edu.tt](http://myportal.utt.edu.tt), [myportal.utt.edu.tt](http://myportal.utt.edu.tt), [myportal.utt.edu.tt](http://myportal.utt.edu.tt), [myportal.utt.edu.tt](http://myportal.utt.edu.tt), [myportal.utt.edu.tt](http://myportal.utt.edu.tt), [myportal.utt.edu.tt](http://myportal.utt.edu.tt), [myportal.utt.edu.tt](http://myportal.utt.edu.tt), 114.115.238.41, [www.stes.tyc.edu.tw](http://www.stes.tyc.edu.tw), [www.stes.tyc.edu.tw](http://www.stes.tyc.edu.tw), Disposable vapes

P.S. Free & New 300-410 dumps are available on Google Drive shared by ITexamReview: <https://drive.google.com/open?id=1XMLE-Jr4Jk-nAeJKZf2zi4hyEt36vCKR>