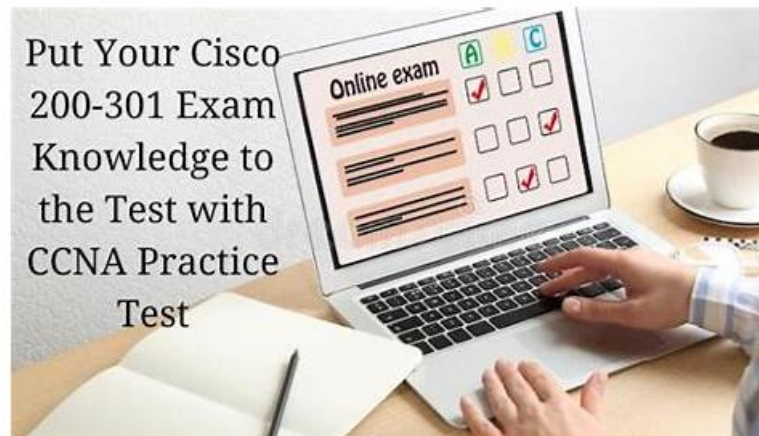


# Study Your Cisco 200-301 Exam with The Best Cisco 200-301 Trustworthy Source Easily



BONUS!!! Download part of ValidDumps 200-301 dumps for free: <https://drive.google.com/open?id=1SRzD9TQNDIfsc9hQvto7wrLXNumPc5Bs>

Although the pass rate of our 200-301 study materials can be said to be the best compared with that of other exam tests, our experts all are never satisfied with the current results because they know the truth that only through steady progress can our 200-301 Preparation braindumps win a place in the field of exam question making forever.

Cisco 200-301 Exam is a certification exam for the Cisco Certified Network Associate (CCNA) designation. 200-301 exam tests your knowledge and skills in network fundamentals, network access, IP connectivity, IP services, security fundamentals, and automation and programmability. Passing 200-301 exam demonstrates your ability to install, configure, operate, and troubleshoot small to medium-sized enterprise network infrastructures.

Cisco 200-301 certification exam is a globally recognized certification for individuals seeking to become certified network associates. Cisco Certified Network Associate Exam certification validates the knowledge and skills of network professionals in various areas such as network security, network fundamentals, automation, and programmability. It is a comprehensive exam that tests the candidate's expertise in the latest technologies and trends in the networking industry.

>> 200-301 Trustworthy Source <<

## Best Accurate 200-301 Trustworthy Source, Valid 200-301 Test Vce

In order to be able to better grasp the proposition thesis direction, the Cisco Certified Network Associate Exam study question focus on proposition which one recent theory and published, in all kinds of academic report even if update to find effective thesis points, according to the proposition of preferences and habits, ponder proposition style of topic selection, to update our 200-301 Exam Question, to facilitate users of online learning, better fit time development hot spot.

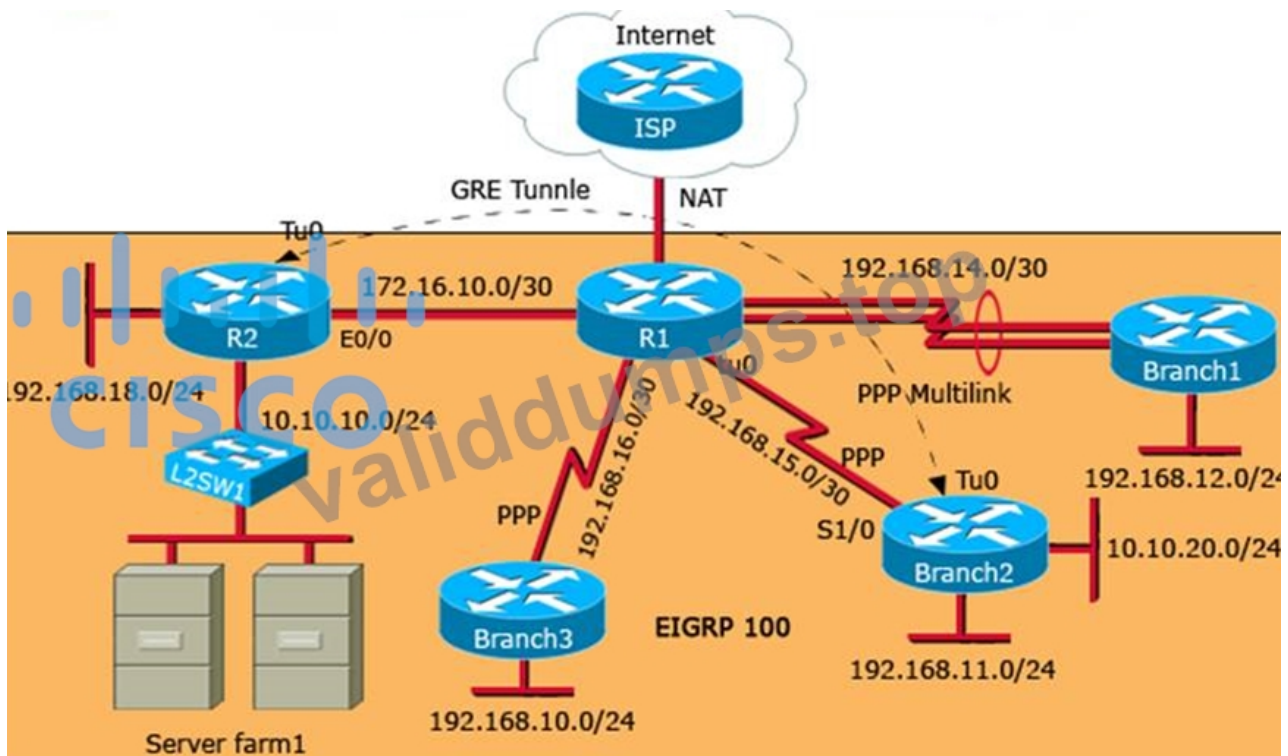
Achieving the Cisco 200-301 Certification can enhance an individual's career prospects in the field of networking. Cisco Certified Network Associate Exam certification is recognized globally and is highly respected within the industry. It can open up new job opportunities, increase earning potential, and demonstrate a commitment to professional development.

## Cisco Certified Network Associate Exam Sample Questions (Q277-Q282):

### NEW QUESTION # 277

GRE Tunnel

Refer to the topology below and answer the following questions.



Why is the Branch2 network 10.10.20.0/24 unable to communicate with the Server farm1 network 10.10.10.0/24 over the GRE tunnel?

- A. The static route points to the tunnel0 interface that is misconfigured on the R2 router.
- B. The GRE tunnel destination is not configured on the Branch2 router.
- C. The static route points to the tunnel0 interface that is misconfigured on the Branch2 router.
- D. The GRE tunnel destination is not configured on the R2 router.

Answer: C

#### NEW QUESTION # 278

```

R1#show ip route

Gateway of last resort is 10.0.0.2 to network 0.0.0.0

10.0.0.0/8 is variably subnetted, 10 subnets, 3 masks
C 10.0.0.0/24 is directly connected, FastEthernet0/0
L 10.0.0.1/32 is directly connected, FastEthernet0/0
C 10.0.1.0/24 is directly connected, FastEthernet0/1
L 10.0.1.1/32 is directly connected, FastEthernet0/1
C 10.0.2.0/24 is directly connected, FastEthernet1/0
L 10.0.2.1/32 is directly connected, FastEthernet1/0
C 10.0.3.0/24 is directly connected, FastEthernet1/1
L 10.0.3.1/32 is directly connected, GigabitEthernet1/1
O 10.0.4.0/29 [110/2] via 10.0.4.2 00:00:03, GigabitEthernet1/1
S 10.1.0.0/16 [1/0] via 10.0.3.2
S 10.1.3.0/24 [1/0] via 10.0.3.2
S* 0.0.0.0/0 [1/0] via 10.0.0.2

```

Refer to the exhibit.

How does router R1 forward packets destined to 10.0.4.10?

- A. via 10.0.4.2

- B. via FastEthernet0/1
- **C. via 10.0.0.2**
- D. via FastEthernet1/1

**Answer: C**

#### NEW QUESTION # 279

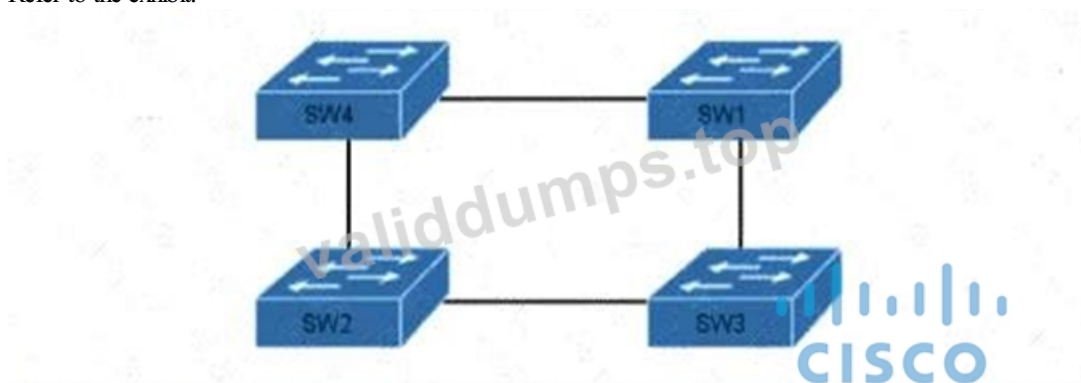
What software defined architecture plane assists network devices with making packet-forwarding decisions by providing Layer 2 reachability and Layer 3 routing information?

- A. management plane
- B. data plane
- **C. control plane**
- D. policy plane

**Answer: C**

#### NEW QUESTION # 280

Refer to the exhibit.



Which switch in this configuration will be elected as the root bridge?

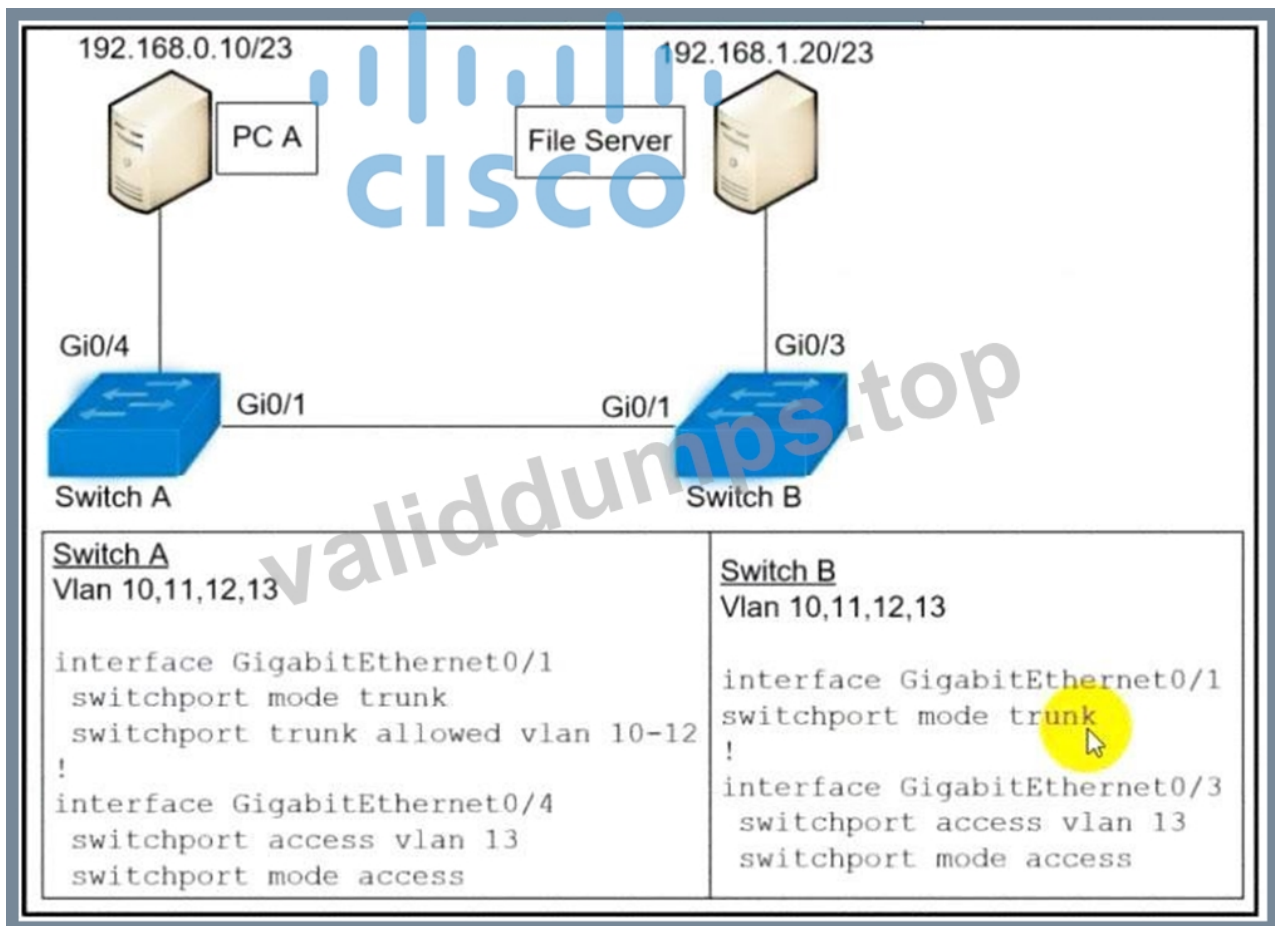
```
SW1: 0C:E0:38:00:94:04
SW2: 0C:0E:15:22:05:97
SW3: 0C:0E:15:1A:3C:9D
SW4: 0C:E0:18:A1:B3:19
```

- **A. SW3**
- B. SW4
- C. SW2
- D. SW1

**Answer: A**

#### NEW QUESTION # 281

Refer to the exhibit.



A network engineer must configured communication between PC A and the File Server. To prevent interruption for any other communications, which command must be configured?

- A. Switchport trunk allowed vlan remove 10-11
- B. Switchport trunk allowed vlan add 13
- C. Switchport trunk allowed vlan none
- D. Switch trunk allowed vlan 12

**Answer: C**

#### NEW QUESTION # 282

.....

**Valid 200-301 Test Vce:** <https://www.validdumps.top/200-301-exam-torrent.html>

- 200-301 Latest Study Plan □ 200-301 Reliable Exam Online □ 200-301 Latest Study Plan □ Copy URL ► [www.pass4test.com](http://www.pass4test.com) ◀ open and search for “200-301 ” to download for free □ 200-301 Valid Cram Materials
- 200-301 Exam Bootcamp: Cisco Certified Network Associate Exam - 200-301 Original Questions - 200-301 Exam Prep □ Search for ( 200-301 ) and download it for free on □ [www.pdfvce.com](http://www.pdfvce.com) □ website □ Valid 200-301 Exam Papers
- Cisco 200-301 Exam Questions - Pass With Confidence! ↔ Easily obtain ☼ 200-301 □ ☼ □ for free download through 「 [www.torrentvce.com](http://www.torrentvce.com) 」 □ Reliable 200-301 Exam Blueprint
- 200-301 Reliable Exam Braindumps □ 200-301 Reliable Exam Braindumps □ 200-301 Updated Dumps □ Open website ► [www.pdfvce.com](http://www.pdfvce.com) □ and search for □ 200-301 □ for free download □ 200-301 Sample Questions Answers
- 200-301 Exam Assessment □ 200-301 Exam Assessment □ 200-301 Clearer Explanation □ The page for free download of □ 200-301 □ on 「 [www.prep4away.com](http://www.prep4away.com) 」 will open immediately □ 200-301 Reliable Exam Online
- Cisco 200-301 Exam Questions - Pass With Confidence! □ Open website □ [www.pdfvce.com](http://www.pdfvce.com) □ and search for ► 200-301 ◀ for free download □ 200-301 Exam Assessment
- 200-301 Clearer Explanation □ Valid 200-301 Exam Papers □ Valid 200-301 Exam Papers □ Copy URL [ [www.testkingpass.com](http://www.testkingpass.com) ] open and search for ► 200-301 ◀ to download for free □ Reliable 200-301 Test Simulator
- 200-301 Reliable Test Sample □ 200-301 Latest Study Plan □ 200-301 Valid Learning Materials □ Easily obtain 《 200-301 》 for free download through 「 [www.pdfvce.com](http://www.pdfvce.com) 」 ☼ Exam 200-301 Blueprint

- 200-301 Updated Dumps □ 200-301 Latest Study Plan □ 200-301 Reliable Exam Online □ Open website “www.pdfdumps.com” and search for 「 200-301 」 for free download □ Reliable 200-301 Exam Blueprint
- Make {Useful Study Notes} With Cisco 200-301 PDF Questions □ Enter “www.pdfvce.com” and search for □ 200-301 □ to download for free □ 200-301 Updated Dumps
- New 200-301 Study Plan □ Reliable 200-301 Exam Blueprint □ 200-301 Exam Assessment □ Search for ☀ 200-301 □ ☀ □ on ( www.testkingpass.com ) immediately to obtain a free download □ 200-301 Clearer Explanation
- bbs.t-firefly.com, myportal.utt.edu.tt, myportal.utt.edu.tt, myportal.utt.edu.tt, myportal.utt.edu.tt, myportal.utt.edu.tt, myportal.utt.edu.tt, myportal.utt.edu.tt, myportal.utt.edu.tt, myportal.utt.edu.tt, bbs.t-firefly.com, myportal.utt.edu.tt, myportal.utt.edu.tt, myportal.utt.edu.tt, myportal.utt.edu.tt, myportal.utt.edu.tt, myportal.utt.edu.tt, bbs.t-firefly.com, shortcourses.russellcollege.edu.au, www.stes.tyc.edu.tw, bbs.t-firefly.com, zt.5188cctv.com, learnerssuccess.com, Disposable vapes

DOWNLOAD the newest ValidDumps 200-301 PDF dumps from Cloud Storage for free: <https://drive.google.com/open?id=1SRzD9TQNDIfsc9hQvto7wrLXNumPc5Bs>