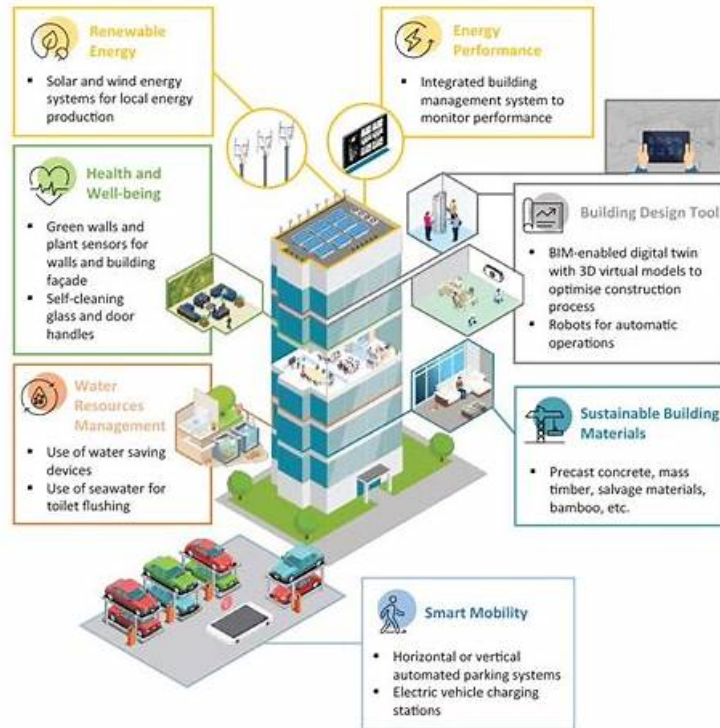


Efficient Latest Integration-Architect Learning Materials & Leading Offer in Qualification Exams & Free PDF Salesforce Certified Integration Architect



DOWNLOAD the newest PDFDumps Integration-Architect PDF dumps from Cloud Storage for free:
<https://drive.google.com/open?id=1J3I9WTqG4pwn6f5PPgYMgZUtWukdYzDR>

Are you ready to take your career to the next level with the Salesforce Certified Integration Architect (Integration-Architect)? Look no further than PDFDumps for all of your Salesforce Certified Integration Architect (Integration-Architect) exam needs. Our comprehensive and cost-effective solution includes regularly updated Salesforce Integration-Architect Exam Questions, available in a convenient PDF format that can be downloaded on any device, including PC, laptop, mac, tablet, and smartphone.

After your payment is successful, you will receive an e-mail from our system within 5-10 minutes, and then, you can use high-quality Integration-Architect exam guide to learn immediately. Everyone knows that time is very important and hopes to learn efficiently, especially for those who have taken a lot of detours and wasted a lot of time. The sooner you download and use Integration-Architect Training Materials the sooner you get the Integration-Architect certificate.

>> Latest Integration-Architect Learning Materials <<

New Integration-Architect Exam Experience | Integration-Architect Exam Certification

We are stable and Reliable Integration-Architect Exam Questions providers for persons who need them for their exam. We have been staying and growing in the market for a long time, and we will be here all the time, because our excellent quality and high pass rate. As for the safe environment and effective product, there are thousands of candidates are willing to choose our Salesforce Certified Integration Architect study question, why don't you have a try for our study materials, never let you down!

Salesforce Integration-Architect certification exam assesses the candidate's ability to design and implement integration solutions using various integration technologies and tools. Integration-Architect exam covers different topics such as integration architecture, integration patterns, data integration, and security. Integration-Architect Exam also focuses on understanding the business requirements and designing solutions that meet those requirements.

Salesforce Certified Integration Architect Sample Questions (Q15-Q20):

NEW QUESTION # 15

Which WSDL should an architect consider when creating an integration that might be used for more than one salesforce organization and different metadata?

- A. Corporate WSDL
- **B. Partner WSDL**
- C. Enterprise WSDL
- D. SOAP API WSDL

Answer: B

Explanation:

Explanation

The Partner WSDL is the best option for creating an integration that might be used for more than one Salesforce organization and different metadata. The Partner WSDL is loosely typed and can reflect against any configuration of Salesforce. It is static and does not change if modifications are made to an organization's Salesforce configuration. Therefore, it is more flexible and adaptable than the Enterprise WSDL, which is strongly typed and bound to a specific configuration of Salesforce. References: Differences between Salesforce provided WSDL files

NEW QUESTION # 16

An Architect is required to integrate with an External Data Source via a Named Credential with an Apex callout due to technical constraints.

How is authentication achieved?

- A. Connect via Communities.
- **B. Handle authentication in the code.**
- C. Connect via Salesforce Connect.
- D. Handle authentication with login flows.

Answer: B

Explanation:

Explanation

The authentication is achieved by handling it in the code. A Named Credential is a type of metadata that specifies the URL of a callout endpoint and its required authentication parameters. An Apex callout is a way to invoke an external web service or API from Apex code. When using a Named Credential with an Apex callout, the authentication is handled by the Apex code that invokes the callout. The Apex code can use the HttpRequest class to set the endpoint, method, headers, and body of the callout request, and use the Http class to send the request and receive the response. The Apex code can also use the NamedCredential class to access the properties of the Named Credential, such as the principal type, protocol, and credential type. Handling authentication with login flows is not a valid option because login flows are a way to customize the user login process in Salesforce, not for external web services or APIs. Connecting via Salesforce Connect or Communities is not a valid option because they are not related to Apex callouts or Named Credentials.

NEW QUESTION # 17

The director of customer service at Northern Trail Outfitters (NTO) wants to capture and trend specific business events that occur in Salesforce in real time. The metrics will be accessed in an ad-hoc manner using an external analytics system. The events include product exchanges, authorization clicks, subscription cancellations, and refund initiations via Cases. Which solution should meet these business requirements?

- **A. Case Trigger after insert, after update to publish the platform event**
- B. Case after insert Trigger that executes a callout
- C. Case Workflow Rule that sends an Outbound Message

Answer: A

Explanation:

To meet a requirement for real-time event capture that supports an external analytics system, the architect must choose a pattern

that is scalable, decoupled, and reliable. Platform Events are the modern standard for this use case.

By using a Case Trigger to publish a specific Platform Event, NTO creates a highly decoupled Publish

/Subscribe architecture. The external analytics system (or a middleware layer feeding it) acts as a subscriber to the event channel.

This is superior to standard callouts or outbound messaging for several reasons:

- * **Durability:** Platform Events offer a 72-hour retention window. If the analytics system is momentarily offline, it can use the Replay ID to retrieve missed events.

- * **Atomic Transactions:** Triggers can be configured to publish events only after the database transaction successfully commits ("Publish After Commit"), ensuring the analytics system doesn't receive data for transactions that were eventually rolled back.

- * **Event Volume:** Platform Events are designed to handle much higher volumes of real-time messages than standard synchronous callouts.

Option A (Apex Callouts) is a point-to-point, synchronous pattern that would block Case processing and risk hitting "Concurrent Long-Running Request" limits. Option B (Outbound Messaging) is reliable but is limited to a single object per message and uses a rigid SOAP format that is less flexible for ad-hoc external analytics than the modern JSON/CometD/gRPC structures used by the event bus. By implementing Option C, the architect ensures that every specific business milestone (refund, exchange, cancellation) is broadcasted immediately, providing the customer service director with the accurate, real-time visibility required for trending and metrics.

NEW QUESTION # 18

Northern Trail Outfitters (NTO) has recently implemented middleware for orchestration of services across platforms. The ERP system being used requires transactions be captured near real time at a REST endpoint initiated in Salesforce when creating an order object. Additionally, the Salesforce team has limited development resources and requires a low code solution.

Which two options will fulfill the use case requirements?

Choose 2 answers

- **A. Implement Change Data Capture on the order object and leverage the replay Id in the middleware solution.**
- B. Implement a Workflow Rule with Outbound Messaging to send SOAP messages to the designated endpoint.
- C. Use a process builder to create a Platform Event, selecting the record type as the Platform Event Name on insert of record.
- **D. Use Remote Process Invocation fire and forget pattern on insert on the order object using Flow Builder.**

Answer: A,D

Explanation:

Answer A is valid because the Remote Process Invocation fire and forget pattern allows sending a message from Salesforce to the ERP system without waiting for a response or acknowledgement. This enables near real-time integration and reduces the latency and complexity of the integration. The Flow Builder is a low code tool that can be used to invoke an Apex action that makes the HTTP callout to the REST endpoint on insert of the order object.^{1,2} Answer C is valid because the Change Data Capture feature allows capturing changes in Salesforce data and publishing them as events to a streaming channel. The middleware can subscribe to the channel and receive the events that contain the order details. The replay Id is a unique identifier for each event that can be used by the middleware to resume from the last processed event in case of failures or interruptions. This ensures reliable and consistent integration between Salesforce and the ERP system.³ Answer B is not valid because the Outbound Messaging feature uses SOAP messages to send notifications to external systems based on workflow rules. This requires configuring a SOAP endpoint and a WSDL file for the ERP system, which may not be compatible with the REST endpoint requirement. Moreover, Outbound Messaging does not guarantee delivery or order of messages, which may affect the accuracy and timeliness of the integration. Answer D is not valid because the Platform Event feature allows publishing custom events from Salesforce to external systems or vice versa using a publish/subscribe model. However, this requires creating a platform event object and defining its fields and permissions, which may not be a low code solution. Moreover, using the record type as the platform event name may not be a valid or meaningful option, as record types are used to define different business processes or user interfaces for an object.

1: Remote Process Invocation-Fire and Forget 2: Invoke an Apex Class That Makes a Callout 3: Change Data Capture : Replay Events Using Middleware : Outbound Messaging Implementation Guide : Platform Events Developer Guide

NEW QUESTION # 19

Northern Trail Outfitters is planning to perform nightly batch loads into Salesforce using the Bulk API. The CIO is curious about monitoring recommendations for the jobs from the technical architect. Which recommendation should help meet the requirements?

- A. Set the Salesforce debug logs level to "finest", and add the user ID running the job to monitor in the "Debug Logs" in the setup menu.
- B. Visually monitor in the Salesforce UI using the "Bulk Data Load Jobs" in Salesforce in the setup menu.
- **C. Write the error response from the Bulk API status to a custom error logging object in Salesforce using an Apex trigger,**

Answer: C

• • • • •

New Integration-Architect Exam Experience: <https://www.pdfdumps.com/Integration-Architect-valid-exam.html>

- [illegible]

myportal.utt.edu.tt, Disposable vapes

P.S. Free & New Integration-Architect dumps are available on Google Drive shared by PDFDumps: <https://drive.google.com/open?id=1J3I9WTqG4pwn6f5PPgYMgZUtWukdYzDR>