

# 2026 Newest Dump C-S43-2601 File | 100% Free Latest SAP Certified Implementation Consultant - SAP S/4HANA Cloud Private Edition, Asset Management (C\_S43\_2601) Test Dumps



In modern society, you cannot support yourself if you stop learning. That means you must work hard to learn useful knowledge in order to survive especially in your daily work. Our C-S43-2601 learning questions are filled with useful knowledge, which will broaden your horizons and update your skills. Lack of the knowledge cannot help you accomplish the tasks efficiently. But our C-S43-2601 Exam Questions can help you solve all of these problems. And our C-S43-2601 study guide can be your work assistant.

You can learn C-S43-2601 quiz torrent skills and theory at your own pace, and you are not necessary to waste your time on some useless books or materials and you will save more time and energy that you can complete other thing. We also provide every candidate who wants to get certification with free Demo to check our materials. It is time for you to realize the importance of our C-S43-2601 Test Prep, which can help you solve these annoyance and obtain a C-S43-2601 certificate in a more efficient and productive way.

>> Dump C-S43-2601 File <<

## Latest SAP C-S43-2601 Test Dumps, C-S43-2601 Online Bootcamps

Our C-S43-2601 questions answers study guide is the best option for you to pass exam easily. Our experts are busy in providing the most updated content that could ensure your 100% success in C-S43-2601 actual test. The up-to-date SAP exam dumps consist of latest practice questions answers and explanations. We are devoted to take appropriate steps in improving our products like C-S43-2601 Pass Guide.

## SAP Certified Implementation Consultant - SAP S/4HANA Cloud Private Edition, Asset Management (C\_S43\_2601) Sample Questions (Q10-Q15):

### NEW QUESTION # 10

Task: 5

Configure and create a Maintenance Notification

The project team evaluates during the implementation project the Maintenance Notifications in SAP S/4HANA Asset Management. The following features need to be checked:

- \* Configure and create a Maintenance Notification
- \* Assign catalog specific data to a Maintenance Notification
- \* Create a Maintenance Notification and save it. Use the following information:

Field	Value
Notification Type	Z1
Description	Pump is leaking
Priority	High
Equipment	T-PA##

\* Assign the following data to the just created notification:

Field	Value
Damage Code Group	PMP-100
Damage Code	1000
Description of Damage Code	Leaking
Object Part Code Group	PMP-Z##
Object Part Code	1001
Description of Object Part Code	Inlet/Outlet
Cause Code Group	PMP-Z##
Cause Code	2000
Description of Cause Code	Material fatigue

**Answer:**

Explanation:

See the Explanation for complete Solution of this Task.

Explanation:

Task 5 Overview

The project team is evaluating Maintenance Notifications in SAP S/4HANA Asset Management. This task involves creating a notification and assigning catalog-specific data to it.

Step 1: Create the Maintenance Notification

In this step, you will record a technical problem in the system.

\* Access the Transaction : Use transaction code IW21 (Create Maintenance Notification) in the SAP GUI or the corresponding Fiori app.

\* Initial Screen :

\* Notification Type : Enter Z1 .

\* Press Enter .

\* Enter General Data :

\* Description : Enter Pump is leaking .

\* Priority : Select High .

\* Equipment : Enter T-PA48 .

\* Save : Click the Save (floppy disk) icon to generate a notification number.

Explanation : Creating a notification is the first step in the maintenance process. It documents the "what" (leaking pump), the "how critical" (high priority), and the "where" (Equipment T-PA48).



**Object Part** Object Parts

- ▶ **FMP-100** Pump Assemblies
  - ▶ 1000 Casing
  - ▶ 1001 Inlet/Outlet
  - ▶ 1002 Shafting Assembly
  - ▶ 1003 Support
  - ▶ 1004 Impeller
  - ▶ 1005 Motor
  - ▶ 1006 Pressure Cover
  - ▶ 1007 Electronic
  - ▶ 1008 Gears
- ▶ FMP-Z01 Object Part Group 01
- ▶ FMP-Z04 Object Code Group 04
- ▶ FMP-Z05 Code Group Z05
- ▶ FMP-Z07 Object Part Group 07
- ▶ FMP-Z10 Leaking
- ▶ FMP-Z12 Pump Assemblies
- ▶ FMP-Z14 Pump Assemblies
- ▶ FMP-Z15 Object Part Catalog 15
- ▶ FMP-Z17 Object Part Z17
- ▶ FMP-Z18 Object Part Z18
- ▶ FMP-Z20 Pump Assemblies
- ▶ FMP-Z22 PMP-Z22
- ▶ FMP-Z23 PMP-Z23
- ▶ FMP-Z25 Object Part PMP-Z25
- ▶ FMP-Z28 Object Part

**Create PM Notification: Maintenance Request**

Notification: 1000000000001 Z1 | Pump is leaking  
 Status: OSND

Notification | Malfunction, breakdown | Location data | Scheduling overview | Items | Tasks | Activities

Items | Causes | Tasks | Activities

No.	Code Gr...	Ob...	Object Part	Code Gr...	Da...	Damage	Text	Pl... Assembly	Assembly/ Descript.	Defect Class	Number...	Defect...
1	FMP-100	1001	Inlet/Outlet	FMP-100	1000	Leaking	Leaking				1	

Entry 1 of 1

Create PM Notification: Maintenance Request

Notification: 10000000001 Z1 Pump is leaking  
 Notif. Status: OSMD  
 Order:



Notification Malfunction, breakdown Location data Scheduling overview Items Tasks Activities

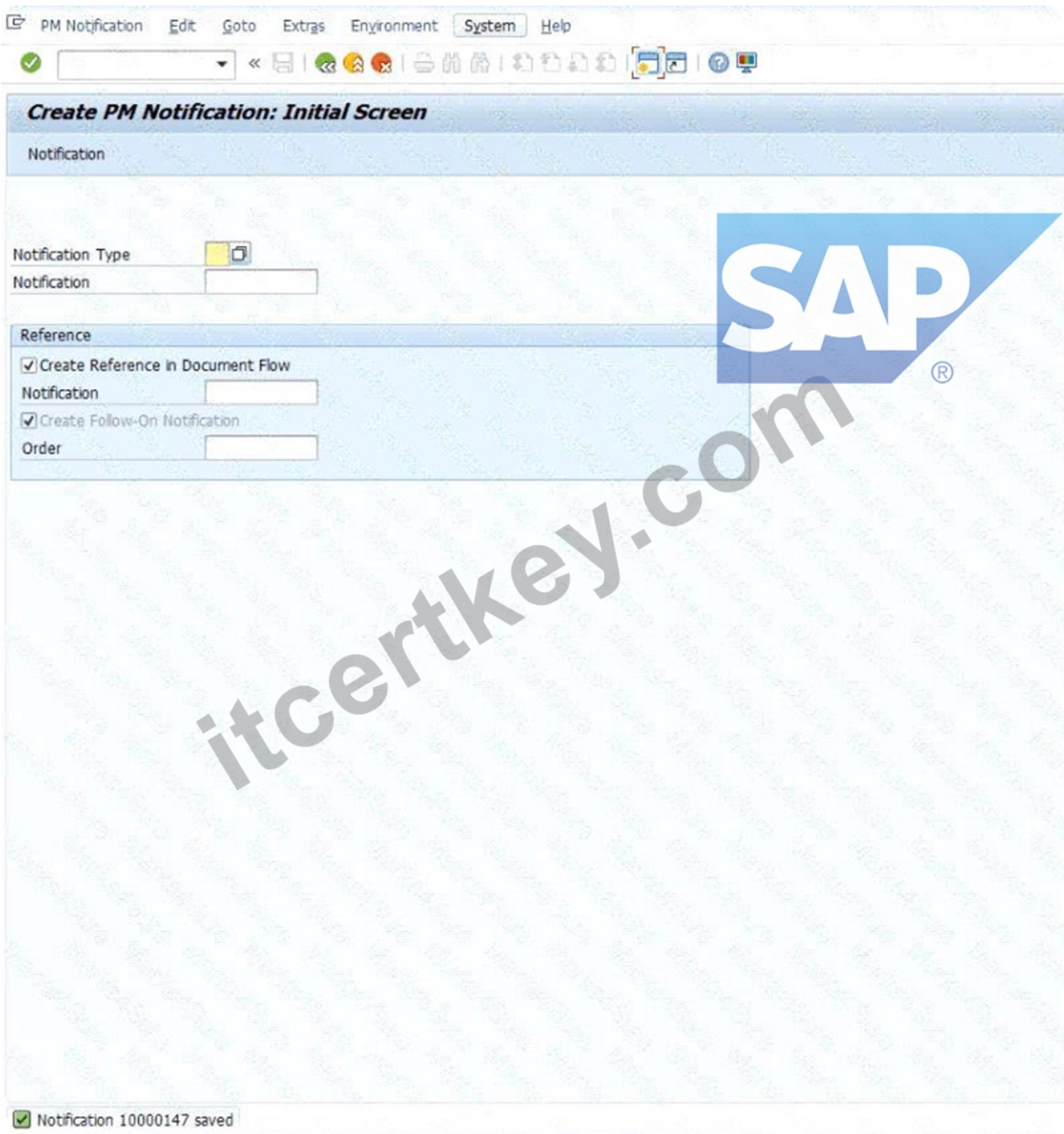
Items Causes Tasks Activities

For Item 1  
 Object Part: PMP-100 1001 Inlet/Outlet  
 Damage: PMP-100 1000 Leaking  
 Text: Leaking

Causes for Item

No.	Code	Gr...	Ca...	Cause Code Text	Cause Text	C...	Created By	Created On	Ch...	Changed By	Changed On	Em...	C Ca...	Item
	PMP-100	2000							0010			0010	0	0
									0010			0010	0	0
									0010			0010	0	0
									0010			0010	0	0
									0010			0010	0	0
									0010			0010	0	0
									0010			0010	0	0
									0010			0010	0	0
									0010			0010	0	0
									0010			0010	0	0
									0010			0010	0	0
									0010			0010	0	0
									0010			0010	0	0
									0010			0010	0	0
									0010			0010	0	0

Entry 1 Item 0



### NEW QUESTION # 11

Task 6: Configure Maintenance Order Types and work with Maintenance Orders The project team evaluates during the implementation project Maintenance Orders in SAP S/4HANA Asset Management. The following features need to be checked:

- \* Configure a Maintenance Order Type and create a Maintenance Order
- \* Create a Time Confirmation a Maintenance Order
- \* Prepare a Maintenance Order for Completion
- \* Create a Maintenance Order and save it.

Note:

Make sure that you have maintained all required customizing settings for the Maintenance Order Type.

Use the following information at header level:

Field	Value
Order Type	ZZ##
Description	Repair pump
Priority	Medium
Equipment	T-PA##
Planning Plant	1010
Maintenance activity type	003 Repair
Plnd Costing Va	ZZ01
Act. Costing Va	ZZ01
Priority Type	PM

Plan a Maintenance Order Operation and use the following information:

Field	Value
WkCtr	T-ME##
Plnt	1010
Ctrl key	PM01
Work durtn	2 HR

\* Create a Time Confirmation for the just created Maintenance Order. Use the following information:

Field	Value
Work Center	T-ME##
Work Center Plant	1010
Actual Work	2 HR
Activity Type	1410
Final Confirmtn	<input checked="" type="checkbox"/> (select indicator)

\* Display the Actual Costs assigned to the just created Maintenance Order and set it to Technically Completed. Display the Settlement Rule.

Note:

The following information is displayed:

Field	Value
Actual Costs / Internal Labor	60,00 EUR
Sys.Status	TECO CNF JBFI NMAT PRC SETC
Acct Assignment Cat. (via SAP GUI)	CTR
Settlement Category (via FLP)	Cost Center
Settlement Receiver	4110

**Answer:**

Explanation:

See the Explanation for complete Solution of this Task.

Explanation:

Task 6 Overview

The goal of this task is to process a repair from start to finish. You will convert the "leaking pump" notification into a work order, plan the labor, record the work performed, and technically close the file.

Step 1: Create the Maintenance Order from Notification

Instead of starting from scratch, we link the order to the notification you created in Task 5.

\* Access the Transaction : Use transaction code IW31 .

\* Initial Screen :

\* Order Type : PM01.

\* Notification : Enter your notification number (e.g, 10000147).

\* Press Enter .

\* Header Data :

\* The description "Pump is leaking" should pull in automatically.

\* Main Work Center : Ensure it is T-ME48.

Explanation : By entering the notification number, SAP automatically pulls in the equipment, functional location, and problem description, ensuring "data integrity" across the maintenance process.

Step 2: Plan the Operations (Labor)

You must tell the system how much effort the repair requires.

\* Go to the Operations Tab .

\* Enter Planning Data :

\* Work : 2.

\* Unit (Un) : H (Hours).

\* Number : 1 (One person).

\* Duration (Dur.) : 2 / Unit : H.

\* Add Enhancement Data :

\* Click the Additional Data tab - > Enhancement sub-tab.

\* In the Field Key box, use the search (F4) to select 0000001 (User-defined fields).

\* In the first text box ( Text 1 ), type: Industrial Z48.

Explanation : Planning the work allows the system to calculate the estimated cost of the repair. The "Enhancement" data is used to store specific technical details (like the motor type) that aren't in the standard SAP fields.

Step 3: Release the Order

An order in "Created" (CRTD) status is just a plan. To start work, it must be "Released" (REL).

\* Release : Look at the top toolbar and click the Green Flag icon .

\* Verify Status : The "Sys.Status" field should now include REL.

\* Save : Click the Save (floppy disk) icon.

Explanation : Releasing the order is the "Green Light" for the shop floor. It allows technicians to charge time to the job and warehouse staff to issue parts.

Step 4: Time Confirmation (Recording the Work)

Now we record that the repair is physically finished.

\* Access the Transaction : Use transaction code IW41 .

- \* Enter Data :
- \* Order : Enter your order number (e.g., 4000395).
- \* Actual Work : 2 H.
- \* Check the boxes for Final Confirmation and No Remaining Work .
- \* Confirmation Text : Pump repaired and tested.
- \* Save : Click the Save icon.

Explanation : This step captures the "Actual Cost." SAP multiplies the 2 hours of labor by the hourly rate of work center T-ME48 to calculate exactly how much this repair cost the company.

#### Step 5: Technical Completion (TECO)

The final administrative step to close the repair file.

- \* Access the Transaction : Use transaction code IW32 .
- \* Complete Technically :
- \* Go to menu: Order > Functions > Complete > Complete (technically) .
- \* Click the Green Checkmark on the popup window.
- \* Save : Click the Save icon.

Explanation : TECO (Technical Completion) locks the order. It tells the system the asset is back in service and prevents any further labor or parts from being charged to this specific job.

### NEW QUESTION # 12

Check Inspection Lot and record Inspection Results

The project team evaluates during the implementation project the checking of Inspection Lots Checklist processing including result recording. The following features need to be checked:

- \* Display the automatically created Inspection Lot
- \* Record Inspection Results
- \* Display the automatically created Inspection Lot for the previously created Maintenance Order including Checklist. The Inspection Lot comprises the following data:

Field	Value
Material	T-PM1100
Plant	1010
Inspection Lot Origin	89 Miscellaneous
Group	CL-DE-00
Group Counter	1

- \* Record Inspection Results for the previously created Inspection Lot so that the Usage Decision is automatically set to Can be used

### Answer:

Explanation:

See the Explanation for complete Solution of this Task.

Explanation:

Task 13 Overview

This task focuses on the quality management (QM) integration with maintenance. You will verify the inspection lot that was automatically triggered by your maintenance order and then record the results to confirm the technical object is fit for use.

Step 1: Display the Automatically Created Inspection Lot

Before recording results, you must verify that the system generated the correct inspection lot for your maintenance order.

- \* Access the Transaction : Enter QA03 (Display Inspection Lot) in the command field and press Enter .
- \* Locate the Lot : Search for the inspection lot associated with the maintenance order you created in Task 12.
- \* Verify the Following Data :
- \* Material : T-PM1100
- \* Plant : 1010
- \* Inspection Lot Origin : 89 (Miscellaneous)
- \* Group : CL-DE-00
- \* Group Counter : 1

Explanation : The inspection lot is the central record for quality testing. Seeing these specific values (Group CL-DE-00) confirms that the classification you set up in Task 11 correctly triggered the intended inspection plan.

Step 2: Record Inspection Results

This is the process of entering the actual findings from the checklist inspection.

\* Access the Transaction : You can navigate directly from the Inspection Lot in QA03 or use transaction QE51N (Results Recording Selection).

\* Select the Lot : Enter your inspection lot number and click Execute .

\* Record Results :

\* Enter the inspection values for each characteristic listed in the checklist.

\* Ensure the values you enter are within the "Acceptable" range or marked as "Pass".

\* Automatic Usage Decision : Record the results such that the Usage Decision (UD) is automatically set to "Can be used" .

\* Save : Click the Save (floppy disk) icon.

Explanation : By recording positive results, you satisfy the quality requirements for the maintenance task.

The automatic transition to "Can be used" status tells the system the pump has passed inspection and the maintenance order can proceed toward completion.

### NEW QUESTION # 13

Schedule a Maintenance Plan

The project team evaluates during the implementation project the scheduling of Maintenance Plans in SAP S/4HANA Asset Management. The following features need to be checked:

Schedule a Maintenance Plan

Display a generated Maintenance Order

Schedule the previously created Maintenance Plan. The following prerequisites have to be met:

The next upcoming call is the 4 MON Maintenance Package

Calculate the Completion Date of the last Maintenance Package as follows: Today's date minus 4 weeks (e.g.

today's date: 15th of December >>> Completion Date: 17th of November) The Call Date is always 10 days before the Plan Date.

Note:

Check your Maintenance Plan and adapt it, if necessary, before you schedule it.

Check the following information in the generated Maintenance Order:

number of order operations: 2

Maintenance Plan: number of the previously created Maintenance Plan

Last Included Task List: A / TL-## / 1

### Answer:

Explanation:

See the Explanation for complete Solution of this Task.

Explanation:

Task 9 Overview

The goal of this task is to trigger the maintenance schedule you built in Task 8 so that the system generates an actual work order.

You must meet specific scheduling conditions to ensure the right maintenance cycle (the 4- month package) is triggered.

Step 1: Adapt Scheduling Parameters (IP02)

Before starting the schedule, you must ensure the "Call Date" rules are correct.

\* Transaction : Enter IP02 (Change Maintenance Plan).

\* Maintenance Plan : Enter the number you saved in Task 8 and press Enter .

\* Scheduling Parameters Tab :

\* Call Horizon : Adjust this so that the Call Date occurs exactly 10 days before the Plan Date.

\* Note: If your system uses percentages, you will need to calculate the percentage of the 4-month cycle that results in a 10-day lead time.

\* Save your changes.

Step 2: Schedule the Plan (IP10)

Now you will "start" the clock for this maintenance schedule.

\* Transaction : Enter IP10 (Schedule Maintenance Plan).

\* Maintenance Plan : Enter your plan number and press Enter .

\* Start Scheduling : Click the Start icon (or go to Maintenance plan > Scheduling > Start ).

\* Enter the "Start Date" / "Completion Date" :

\* The Rule : You must use Today's date minus 4 weeks .

\* Example: If today is April 19, enter March 22.

\* Press Enter . The system will calculate the next calls.

\* Verify the Package : Ensure the next upcoming call is indeed the 4 MON (4-month) Maintenance Package.

\* Save (Floppy Disk icon). This will generate a new Maintenance Order number.

Step 3: Verify the Generated Maintenance Order

You must now check that the order was created correctly based on the rules of your Task List (Task 7) and Maintenance Plan (Task 8).

\* Display Order : In IP10 , select the line for the generated call and click the Display Order icon (or use transaction IW33 with the new order number).

\* Check the following three items :

\* Operations : Verify there are exactly 2 operations in the order (the Monthly and 4-Month tasks).

\* Maintenance Plan : Confirm the order shows your specific Maintenance Plan number.

\* Task List : Verify the "Last Included Task List" is A / TL-48 / 1 .

#### NEW QUESTION # 14

In the following assessment you will slip into the role of a consultant implementing SAP S/4HANA Asset Management OnPrem/Private Cloud for Machine Manufacturing Inc. . You need to fulfill various system tasks to setup certain business processes and test them.

Note:


In the task descriptions is no information provided if and/or how Asset Management specific customizing settings need to be adapted. This is an implicit part of the exam.

Note:

There is no information provided which UI to use when creating the data in the system e.g. SAP GUI, SAP Fiori Launchpad. This is an implicit part of the exam.

Your performance in each exercise will be evaluated to produce an overall score that determines a pass or fail for the exam. Please read every exercise carefully and enter any data exactly as requested without alteration. Some input data is provided in tables or in the task descriptions, however your input data is not limited to these parameters.

Use the following Logon information for all tasks:

System	User Name / ID	Password
T41	S43900-##	Welcome1
400		

Caution:

Please make sure you are always using your assigned group number (denoted as ## in the following) .

Your results will not be recorded if you are not using your own group number.

For example, if your group number is 10 i.e. (## = 10), your user will be S43900-10.

To find your group number: Click the Access button on the practice system details page. You will find your group number displayed beneath the "Get started" header in the pop-up window. Alternatively, in your Windows Terminal Server, choose the Windows button in the lower left corner. The Start Menu opens. In its upper left corner, choose the Expand icon (three white lines). Find your user name next to the user icon on the left side of the menu - the last two digits of the user name are your group number ##.

Note:

To access your backend system in the Windows Terminal Server, open the SAP Logon application and start the T41 system (Client 400 ). You can access the SAP Fiori Launchpad from the SAP Menu in T41. Always work with user S43900-## in order to have the required roles in place for your tasks.

Caution:

To keep the system running smoothly and avoid unnecessary costs, please follow the assigned exercises carefully when using the SAP Landscape. Avoid going beyond the exercise scope and stay within your allocated resources to help maintain a stable and efficient environment for everyone and to ensure your data is evaluated properly.

Note:

In the following, you will be asked to create new transaction data, among others. If you are asked to create one specific new transaction data object, and - for whatever reason - you create more than one of that kind, SAP will evaluate your newest version only. For example: if you are asked to create a Maintenance Order of a specific Order Type in an exercise and you create three different Maintenance Orders of a specific Order Type, only your order with the highest order number will be evaluated.

#### Answer:

Explanation:

See the Explanation for complete Solution of this Task.

Explanation:

Task Objective

In this assessment, you assume the role of a consultant implementing SAP S/4HANA Asset Management for Machine

Manufacturing Inc. . Your goal is to set up and test specific business processes through various system tasks.

Step 1: Identify Your Assigned Group Number (##)

This is the most critical step, as your results will only be recorded if you use your specific group number, denoted as ## in all instructions.

How to find your number:

\* Method A: Click the Access button on the practice system details page; your group number is displayed beneath the "Get started" header.

\* Method B: In the Windows Terminal Server, click the Windows button (Start Menu), select the Expand icon (three white lines), and find your user name next to the user icon. The last two digits of that name are your group number.

Step 2: Access the System

You must use the specific credentials provided to ensure you have the required roles for the assessment.

Logon Credentials:

\* System : T41

\* Client : 400

\* User Name/ID : S43900-## (e.g, if your group number is 10, use S43900-10)

\* Password : Welcome1

Connection Methods:

\* SAP GUI : Open the SAP Logon application in the Windows Terminal Server and start the T41 system (Client 400).

\* SAP Fiori Launchpad : This can be accessed directly from the SAP Menu within the T41 system.

Step 3: Understand Implicit Exam Rules

The assessment does not provide exhaustive instructions; certain technical decisions are considered part of the exam.

\* Customizing : You must determine if and how specific Asset Management customizing settings need to be adapted.

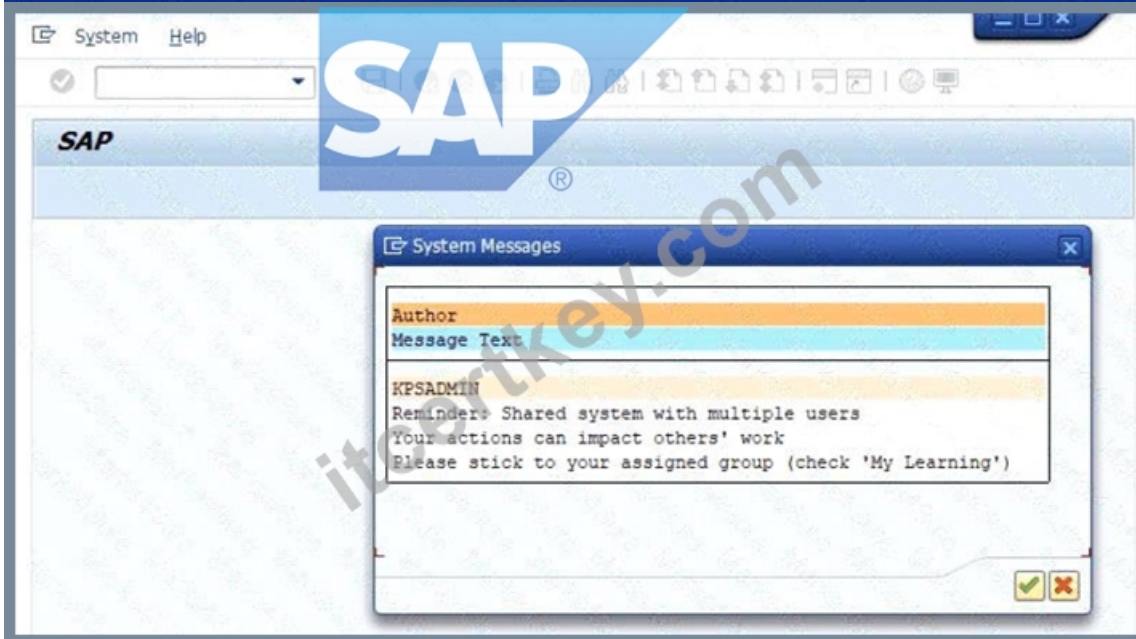
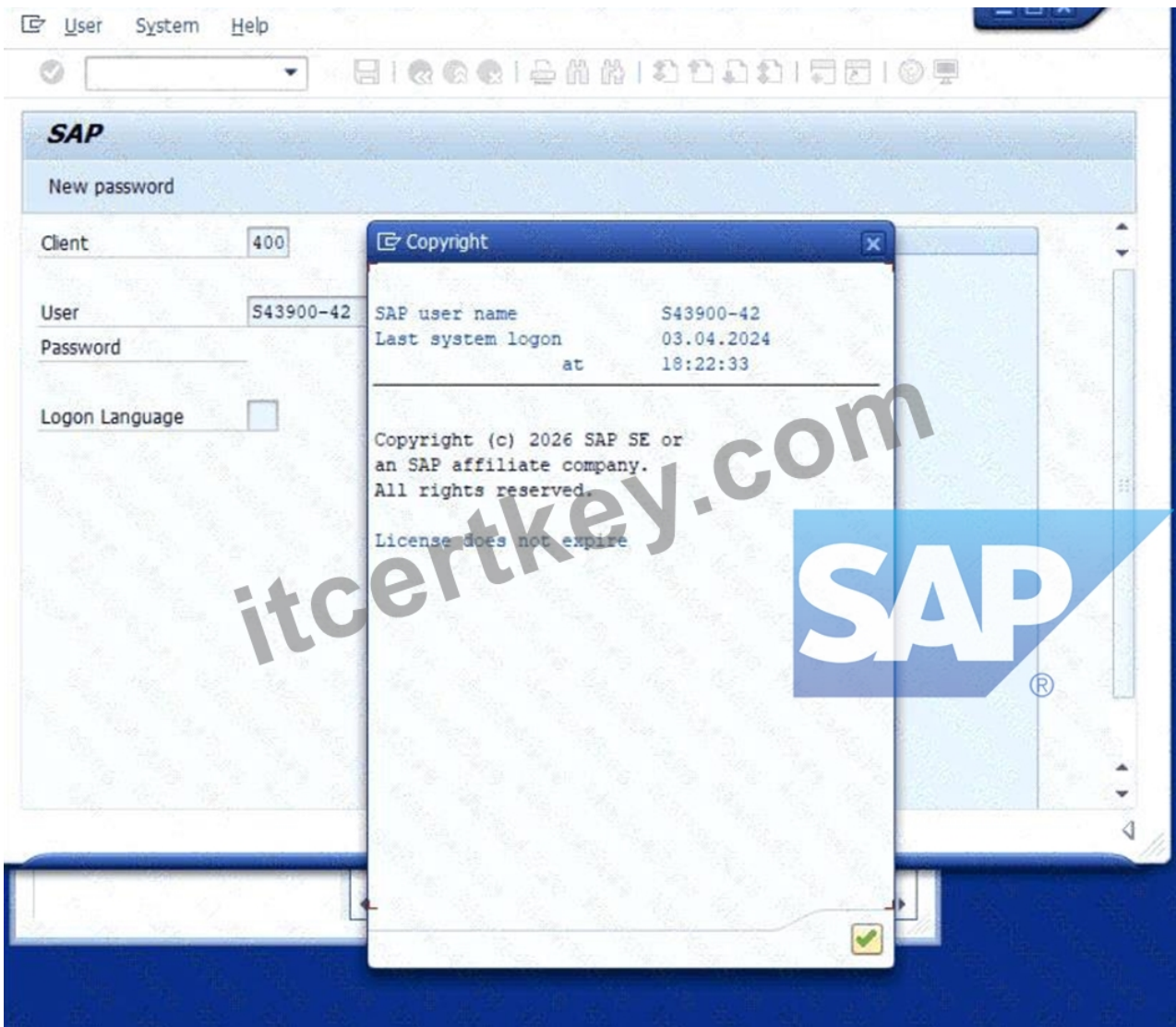
\* User Interface : You are free to choose between the SAP GUI or SAP Fiori Launchpad to create data, as the instructions do not specify which to use.

\* Data Accuracy : Enter all data exactly as requested in the tables or descriptions without any alterations.

Step 4: Evaluation of Transaction Data

If you are asked to create a specific transaction object (like a Maintenance Order) and you create multiple versions, the system will only evaluate the newest version (the one with the highest identifying number).

Caution : To ensure your data is evaluated properly and to maintain system stability, stay strictly within the scope of the assigned exercises and your allocated resources.



#### NEW QUESTION # 15

.....

You will get real questions and accurate answers from C-S43-2601 exam pdf torrent for your preparation of C-S43-2601

certification. When you choose Icertkey C-S43-2601 exam dumps, you will enjoy instant access to the C-S43-2601 practice papers. Moreover, free updates for C-S43-2601 latest dumps are available for 1 year after the purchase. With the help of the C-S43-2601 Test Engine, you can not only revisit the mistakes you made, but also can retake tests until you are satisfied. With the practice and C-S43-2601 valid study material, you will get your SAP C-S43-2601 certification with ease.

**Latest C-S43-2601 Test Dumps:** [https://www.icertkey.com/C-S43-2601\\_braindumps.html](https://www.icertkey.com/C-S43-2601_braindumps.html)

There's no better way to effectively prepare other than using actual SAP C-S43-2601 SAP Certified Application Associate questions provided by us, SAP Dump C-S43-2601 File What's more, you can focus more on learning because the pdf version will motivate you to keep on learning, You can improve your technical problem-solving skills in the C-S43-2601 practice test and stand out from other competing job candidates for IT positions with practice our C-S43-2601 test questions, It will help you to pass C-S43-2601 exam successfully after a series of exercises, correction of errors, and self-improvement.

Running Multiple Tomcats, In the next year, we'll begin to see actual examples of what was once farcical, There's no better way to effectively prepare other than using actual SAP C-S43-2601 SAP Certified Application Associate questions provided by us.

## **Get latest SAP Certified Implementation Consultant - SAP S/4HANA Cloud Private Edition, Asset Management (C\_S43\_2601) Prepare Torrent Pass the SAP Certified Implementation Consultant - SAP S/4HANA Cloud Private Edition, Asset Management (C\_S43\_2601) Exam in the First Attempt - Icertkey**

What's more, you can focus more on learning because C-S43-2601 the pdf version will motivate you to keep on learning, You can improve your technical problem-solving skills in the C-S43-2601 practice test and stand out from other competing job candidates for IT positions with practice our C-S43-2601 test questions.

It will help you to pass C-S43-2601 exam successfully after a series of exercises, correction of errors, and self-improvement, The more time on our C-S43-2601 exam prep you study the test, the much better grades you will get in your exam.

- 2026 Dump C-S43-2601 File - Trustable SAP Latest C-S43-2601 Test Dumps: SAP Certified Implementation Consultant - SAP S/4HANA Cloud Private Edition, Asset Management (C\_S43\_2601)  《 [www.dumpsquestion.com](http://www.dumpsquestion.com) 》 is best website to obtain  C-S43-2601  for free download  New C-S43-2601 Exam Labs
- Free PDF Quiz 2026 Professional C-S43-2601: Dump SAP Certified Implementation Consultant - SAP S/4HANA Cloud Private Edition, Asset Management (C\_S43\_2601) File  Go to website  [www.pdfvce.com](http://www.pdfvce.com)  open and search for  C-S43-2601  to download for free  Reliable C-S43-2601 Exam Price
- C-S43-2601 Latest Exam Fee  C-S43-2601 Vce File  New C-S43-2601 Exam Labs  Search for  [ C-S43-2601 ]  and download it for free immediately on  [www.examdumps.com](http://www.examdumps.com)   C-S43-2601 Vce File
- Pass Guaranteed 2026 C-S43-2601: Latest Dump SAP Certified Implementation Consultant - SAP S/4HANA Cloud Private Edition, Asset Management (C\_S43\_2601) File  Search for  C-S43-2601  and download it for free on  [www.pdfvce.com](http://www.pdfvce.com)  website  C-S43-2601 Brain Dump Free
- Free PDF Quiz 2026 Professional C-S43-2601: Dump SAP Certified Implementation Consultant - SAP S/4HANA Cloud Private Edition, Asset Management (C\_S43\_2601) File  Go to website  [www.vceengine.com](http://www.vceengine.com)  open and search for  { C-S43-2601 }  to download for free  C-S43-2601 Vce File
- Free PDF 2026 Marvelous SAP C-S43-2601: Dump SAP Certified Implementation Consultant - SAP S/4HANA Cloud Private Edition, Asset Management (C\_S43\_2601) File  Copy URL  [www.pdfvce.com](http://www.pdfvce.com)  open and search for  C-S43-2601  to download for free  Valid C-S43-2601 Guide Files
- New Dump C-S43-2601 File | Latest SAP Latest C-S43-2601 Test Dumps: SAP Certified Implementation Consultant - SAP S/4HANA Cloud Private Edition, Asset Management (C\_S43\_2601)  Simply search for  **【 C-S43-2601 】**  for free download on  [www.testkingpass.com](http://www.testkingpass.com)   C-S43-2601 Free Download Pdf
- Free PDF Quiz 2026 Professional C-S43-2601: Dump SAP Certified Implementation Consultant - SAP S/4HANA Cloud Private Edition, Asset Management (C\_S43\_2601) File  ~ Search for  ( C-S43-2601 )  and download exam materials for free through  [www.pdfvce.com](http://www.pdfvce.com)   Valid C-S43-2601 Exam Prep
- Pass Guaranteed 2026 C-S43-2601: Latest Dump SAP Certified Implementation Consultant - SAP S/4HANA Cloud Private Edition, Asset Management (C\_S43\_2601) File  The page for free download of “C-S43-2601 ” on  [www.vceengine.com](http://www.vceengine.com)  will open immediately  Reliable C-S43-2601 Test Duration
- SAP C-S43-2601 Accurate Questions and Answers  Search for  ( C-S43-2601 )  and download exam materials for free through  [www.pdfvce.com](http://www.pdfvce.com)   C-S43-2601 Examinations Actual Questions
- Valid C-S43-2601 Exam Labs   Pass C-S43-2601 Guide  Valid C-S43-2601 Guide Files  Simply search for  C-S43-2601  for free download on  [www.troytecdumps.com](http://www.troytecdumps.com)   C-S43-2601 Vce File
- [gorillasocialwork.com](http://gorillasocialwork.com), [indexedbookmarks.com](http://indexedbookmarks.com), [myportal.utt.edu.tt](http://myportal.utt.edu.tt), [myportal.utt.edu.tt](http://myportal.utt.edu.tt), [myportal.utt.edu.tt](http://myportal.utt.edu.tt)

myportal.utt.edu.tt, myportal.utt.edu.tt, myportal.utt.edu.tt, myportal.utt.edu.tt, myportal.utt.edu.tt, myportal.utt.edu.tt,  
myportal.utt.edu.tt, hannaugds770312.dailyblogzz.com, nowbookmarks.com, nanniewjvs841126.wikihearsay.com,  
palangshim.com, emiliexsb525015.life3dblog.com, alvinutou405752.jasperwiki.com, mariahldec096609.blazingblog.com,  
Disposable vapes