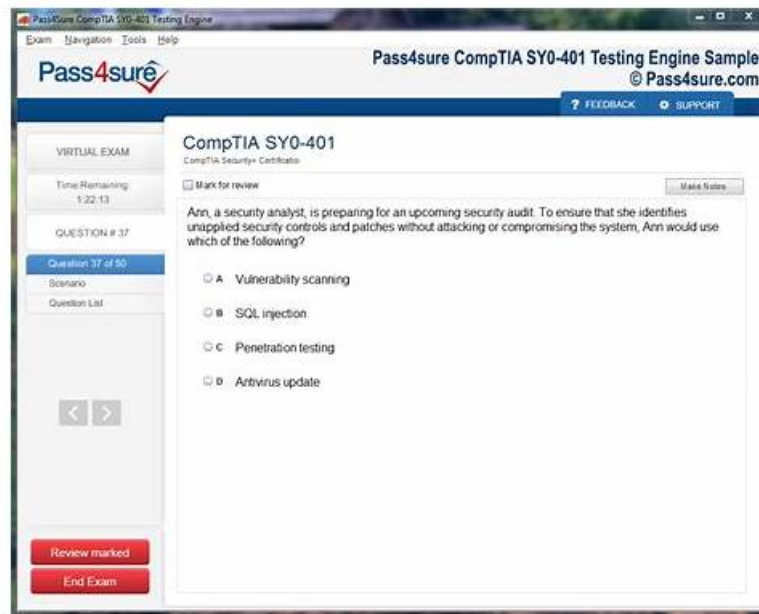


New PAP-001 Test Pass4sure, Latest PAP-001 Dumps Ppt



P.S. Free 2025 Ping Identity PAP-001 dumps are available on Google Drive shared by Dumpexams:
<https://drive.google.com/open?id=1BMiiEbaOEm4GJgPS0xlp9xZQMEBjz24>

If you still worry too much about purchasing professional PAP-001 test guide on the internet, I can tell that it is quite normal. Useful certification PAP-001 guide materials will help your preparing half work with double results. If you consider about our PAP-001 exam questions quality, you can free download the demo of our PAP-001 Exam Questions. We have thought of your needs and doubts considerably on the PAP-001 study guide. Our certification PAP-001 guide materials are collected and compiled by experience experts who have worked in this line more than 10 years.

Ping Identity PAP-001 Exam Syllabus Topics:

Topic	Details
Topic 1	<ul style="list-style-type: none">General Maintenance and File System: This section of the exam measures the skills of System Engineers and addresses maintenance tasks such as license management, backups, configuration imports or exports, auditing, and product upgrades. It also includes the purpose of log files and an overview of the PingAccess file system structure with important configuration files.
Topic 2	<ul style="list-style-type: none">Installation and Initial Configuration: This section of the exam measures skills of System Engineers and reviews installation prerequisites, methods of installing or removing PingAccess, and securing configuration database passwords. It explains the role of run.properties entries and outlines how to set up a basic on-premise PingAccess cluster.
Topic 3	<ul style="list-style-type: none">Product Overview: This section of the exam measures skills of Security Administrators and focuses on understanding PingAccess features, functionality, and its primary use cases. It also covers how PingAccess integrates with other Ping products to support secure access management solutions.
Topic 4	<ul style="list-style-type: none">General Configuration: This section of the exam measures skills of Security Administrators and introduces the different object types within PingAccess such as applications, virtual hosts, and web sessions. It explains managing application resource properties, creating web sessions, configuring identity mappings, and navigating the administrative console effectively.
Topic 5	<ul style="list-style-type: none">Integrations: This section of the exam measures skills of System Engineers and explains how PingAccess integrates with token providers, OAuth and OpenID Connect configurations, and site authenticators. It also includes the use of agents and securing web, API, and combined applications through appropriate integration settings.

Free PDF Quiz 2026 Ping Identity High Pass-Rate New PAP-001 Test Pass4sure

It is important to check the exercises and find the problems. Once you use our PAP-001 study prep to aid your preparation of the exam, all of your exercises of the study materials will be carefully recorded on the system of the PAP-001 exam braindump. Also, you can know your current learning condition clearly. The results will display your final scores on the screen. Also, you will know the numbers of correct and false questions of your exercise. Our PAP-001 test question grading system is designed to assist your study, which is able to calculate quickly. So you don't need to wait for a long time. The calculating speed of our PAP-001 study prep is undergoing the test of practice. The highest record is up to five seconds. There has no delay time of the grading process. Slow system response doesn't exist. In addition, the calculation system of the PAP-001 test question is very powerful and stable. We promise that the results of your exercises are accurate.

Ping Identity Certified Professional - PingAccess Sample Questions (Q15-Q20):

NEW QUESTION # 15

Any user who accesses an application must be in sales unless the user is a manager in the marketing department. The administrator creates the following web session rules:

- * (A) Look for department = sales
- * (B) Look for department = marketing
- * (C) Look for job_title = manager

Which additional actions should be taken to properly enforce this requirement?

- A. Create a Rule Set (D) to accept ALL (A) # Create a Rule Set (E) to accept ANY (B) (C) # Create a Rule Set Group (F) to accept ALL (D) (E) # Add Rule Set Group (F) to the resource
- **B. Create a Rule Set (D) to accept ANY (A) # Create a Rule Set (E) to accept ALL (B) (C) # Create a Rule Set Group (F) to accept ANY (D) (E) # Add Rule Set Group (F) to the resource**
- C. Create a Rule Set (D) to accept ALL (A) (B AND C) # Add Rule Set (D) to the resource
- D. Create a Rule Set (D) to accept ANY (A) (B) (C) # Add Rule Set (D) to the resource

Answer: B

Explanation:

The requirement is:

- * Allow access if user is in sales
- * OR if user is in marketing AND is a manager

This is logically represented as:

(A) OR (B AND C)

To configure this in PingAccess:

- * Rule Set (D) = ANY (A)
- * Rule Set (E) = ALL (B, C)
- * Rule Set Group (F) = ANY (D, E)
- * Assign Group (F) to the resource

This exactly matches Option D.

- * Option A is incorrect - requires both A and (B AND C), which is stricter than the requirement.
- * Option B is incorrect - ANY(A, B, C) would allow users in marketing or managers without requiring both.
- * Option C is incorrect - it uses ALL(D, E), which would require both conditions instead of OR.
- * Option D is correct - it models (A OR (B AND C)).

Reference: PingAccess Administration Guide - Rule Sets and Rule Set Groups

NEW QUESTION # 16

An administrator is integrating a new PingAccess Proxied Application for which the target site uses a certificate issued by a publicly trusted Certificate Authority.

How should the administrator configure PingAccess to trust the target site?

- A. Import the certificate chain into Key Pairs
- **B. Configure the PingAccess Site to use the Java Trust Store Certificate Group**
- C. Drop the certificate chain into a Trusted Certificate Group
- D. Import the certificate chain into Key Pairs and add it to a Trusted Certificate Group

Answer: B

Explanation:

Publicly trusted Certificate Authorities are already included in the Java Trust Store Certificate Group, which PingAccess can use directly. This avoids importing the certificate manually.

Exact Extract:

"If the target site uses a certificate from a well-known public CA, configure the site to use the Java Trust Store Certificate Group."

* Option A is incorrect - Key Pairs store private keys for SSL termination, not public CA trust anchors.

* Option B is correct - Java Trust Store already contains trusted public CAs.

* Option C is incorrect - again, Key Pairs are not used for trust validation.

* Option D is unnecessary for public CAs - only internal/self-signed certs must be imported.

Reference: PingAccess Administration Guide - Trusted Certificate Groups

NEW QUESTION # 17

An administrator is integrating a new PingAccess Proxied Application. The application will temporarily need a self-signed certificate during the POC/demo phase. PingAccess is terminating SSL and is responsible for loading the SSL certificate for the application. What initial action must the administrator take in PingAccess in this situation?

- **A. Go to the Key Pairs section and create a new certificate**
- B. Go to the Certificates section and create a new certificate
- C. Go to the Key Pairs section and import the PKCS#12 file provided by the publicly trusted Certificate Authority
- D. Go to the Key Pairs section and import the PKCS#12 file provided by the customer's internal Certificate Authority

Answer: A

Explanation:

For SSL termination, PingAccess requires a Key Pair (certificate + private key). During a POC/demo, when a self-signed certificate is used, the administrator can create it directly in the Key Pairs section of the console.

Exact Extract:

"Use the Key Pairs section to create self-signed certificates for testing or proof-of-concept deployments. For production, import a PKCS#12 file containing a certificate chain and private key."

* Option A is incorrect - Certificates store trust anchors (CAs), not SSL termination certs.

* Option B is incorrect - an internal CA-signed cert requires PKCS#12 import, not self-signed creation.

* Option C is incorrect - a publicly trusted CA is not used for a demo phase.

* Option D is correct - creating a new certificate in Key Pairs generates a self-signed cert suitable for demos.

Reference: PingAccess Administration Guide - Key Pairs and Certificates

NEW QUESTION # 18

What is the purpose of the admin.auth configuration setting?

- **A. To override the SSO configuration for the administrative user interface.**
- B. To define the method to use for authenticating to the administrative API.
- C. To configure SSO for the administrative user interface.
- D. To enable automatic authentication to the PingAccess administrative console.

Answer: A

Explanation:

The admin.auth setting in the run.properties file is used to specify a fallback authentication method for the administrative console.

Exact Extract from official documentation:

"To define a fallback administrator authentication method if the OIDC token provider is unreachable, enable the admin.auth=native property in the run.properties file. This overrides any configured administrative authentication to basic authentication." This makes it

clear that the purpose of `admin.auth` is to override any configured SSO for the admin UI and enforce native (basic) authentication instead.

* Option A is incorrect because the `admin.auth` setting does not configure SSO. SSO for the admin UI is configured separately.

* Option B is incorrect because this setting does not apply to the administrative API; it specifically applies to the admin UI console.

* Option C is correct because it directly reflects the documented behavior: `admin.auth` overrides SSO configuration for the administrative UI and enables native authentication.

* Option D is incorrect because the setting does not enable automatic authentication. It still requires credentials, but falls back to basic auth.

Reference: PingAccess User Interface Reference Guide - Configuring Admin UI SSO Authentication

NEW QUESTION # 19

Which two options can be changed in the `run.properties` file? (Choose 2 answers.)

- A. URL for heartbeat endpoint
- **B. Operational mode for PingAccess**
- C. Default logs location
- **D. Logging levels**
- E. X-Frame-Options header

Answer: B,D

Explanation:

The `run.properties` file in PingAccess is the primary configuration file that defines system-level runtime behavior. According to PingAccess documentation:

* Exact Extract:

"The `run.properties` file contains configuration properties for PingAccess, including operational mode, logging levels, admin authentication fallback, cluster settings, and system defaults." (PingAccess Administrator's Guide - `run.properties` Reference) From this, we can determine:

* C. Operational mode for PingAccess#CorrectThe property `pa.operational.mode` in `run.properties` defines whether the node operates as `STANDALONE`, `CLUSTERED_CONSOLE`, `CLUSTERED_CONSOLE_REPLICA`, or `CLUSTERED_ENGINE`. This is one of the core configurable options.

* E. Logging levels#CorrectProperties such as `log.level` and other logging configurations are explicitly defined in `run.properties`, allowing administrators to adjust the verbosity of logs (`DEBUG`, `INFO`, `WARN`, `ERROR`).

Why the others are incorrect:

* A. Default logs location#IncorrectThe log file path is not controlled via `run.properties`. It is defined in `log4j2.xml`, not in `run.properties`.

* B. URL for heartbeat endpoint#IncorrectThe heartbeat endpoint (`/pa/heartbeat.ping`) is a fixed system endpoint and is not configurable in `run.properties`.

* D. X-Frame-Options header#IncorrectSecurity headers like `X-Frame-Options` are managed under application security policies or global response headers, not in `run.properties`.

Reference: PingAccess Administrator's Guide - `run.properties` Reference (section describing `pa.operational.mode` and logging configuration properties).

NEW QUESTION # 20

.....

Dumpexams can provide you a pertinence training and high quality exercises, which is your best preparation for your first time to attend Ping Identity certification PAP-001 exam. Dumpexams's exercises are very similar with the real exam, which can ensure you a successful passing the Ping Identity Certification PAP-001 Exam. If you fail the exam, we will give you a full refund.

Latest PAP-001 Dumps Ppt: <https://www.dumpexams.com/PAP-001-real-answers.html>

- PAP-001 exam dumps - PAP-001 torrent vce - PAP-001 study pdf ☐ Download ➡ PAP-001 ☐ for free by simply searching on ☐ www.practicevce.com ☐ ☐ PAP-001 Download Pdf
- Up-to-Date Ping Identity PAP-001 Exam Questions For Best Result ☐ Search on “www.pdfvce.com” for [PAP-001] to obtain exam materials for free download ☐ Test PAP-001 Dumps
- 2026 New PAP-001 Test Pass4sure | Professional Latest PAP-001 Dumps Ppt: Certified Professional - PingAccess 100% Pass ☐ Search for ➤ PAP-001 ☐ on ☐ www.practicevce.com ☐ immediately to obtain a free download ☐ PAP-001 Useful Dumps

- What's more, part of that Dumpexams PAP-001 dumps now are free: <https://drive.google.com/open?id=1BMiiEbaOE4GJgPS0xlpS9xZQMEBjz24>

What's more, part of that Dumpexams PAP-001 dumps now are free: <https://drive.google.com/open?id=1BMiiEbaOE4GJgPS0xlpS9xZQMEBjz24>