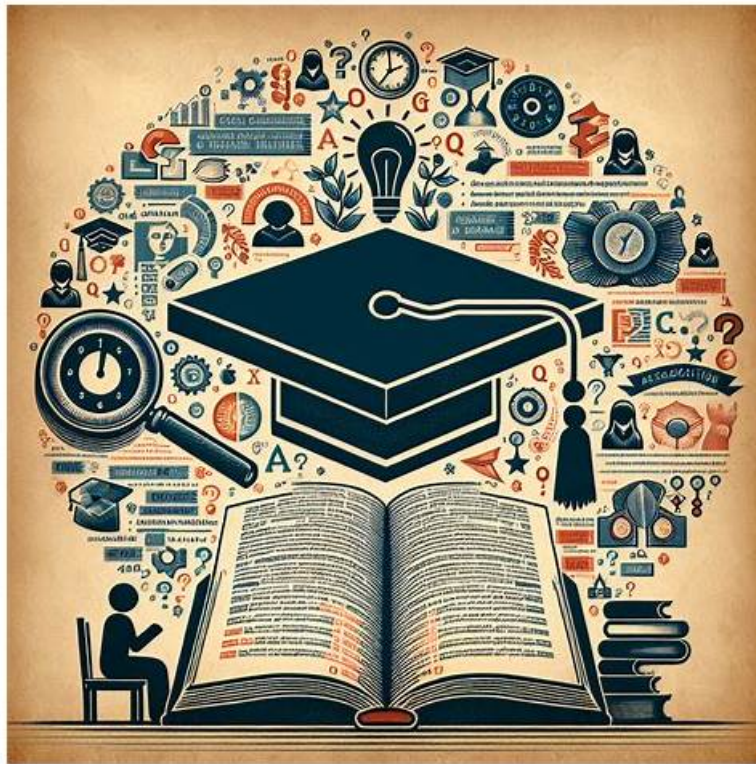


2026 NetSec-Architect–100% Free Study Group | Valid Palo Alto Networks Network Security Architect Exam Simulator Free



Now are you in preparation for NetSec-Architect exam? If so, you must be a man with targets. Our Exam4PDF are committed to help such a man with targets to achieve the goal. NetSec-Architect exam simulation software developed by us are filled with the latest and comprehensive questions. If you buy our product, we will offer one year free update of the questions for you. With our software, passing NetSec-Architect Exam will no longer be the problem.

If you would like to use all kinds of electronic devices to prepare for the NetSec-Architect exam, with the online app version of our NetSec-Architect study materials, you can just feel free to practice the questions in our NetSec-Architect training materials no matter you are using your mobile phone, personal computer, or tablet PC. In addition, another strong point of the online app version is that it is convenient for you to use even though you are in offline environment. In other words, you can prepare for your NetSec-Architect Exam with under the guidance of our NetSec-Architect training materials anywhere at any time.

>> Study NetSec-Architect Group <<

Questions for the Palo Alto Networks NetSec-Architect Exam - 100% Money-Back Guarantee

In today's highly competitive Palo Alto Networks market, having the NetSec-Architect certification is essential to propel your career forward. To earn the Palo Alto Networks NetSec-Architect certification, you must successfully pass the NetSec-Architect Exam. However, preparing for the Palo Alto Networks NetSec-Architect exam can be challenging, with potential hurdles like exam anxiety and time constraints.

Palo Alto Networks Network Security Architect Sample Questions (Q46-Q51):

NEW QUESTION # 46

A company wants to reduce false positives in threat detection while maintaining strong security.

What should they do?

- A. Allow all traffic
- **B. Tune security profiles and exceptions**
- C. Disable security profiles
- D. Remove logging

Answer: B

Explanation:

Tuning security profiles and creating exceptions reduces false positives while maintaining protection. Disabling profiles or allowing all traffic compromises security.

NEW QUESTION # 47

An organization is designing the Prisma Access service connections for its data centers. Each data center has 10 Gb redundant links to the internet. Each data center will need to support a minimum of 1.5 Gbps of throughput from Prisma Access connected users and branches. Which diagram depicts a solution that meets the requirements of this use case?

- **A.**
- B.
- C.
- D.

Answer: A

Explanation:

This design uses ECMP across redundant ISP links with multiple active IPsec tunnels, allowing traffic to be load-balanced and aggregated. This ensures the required throughput (>1.5 Gbps) can be achieved while also providing high availability and resilience, aligning with best practices for Prisma Access service connections.

NEW QUESTION # 48

An organization has selected Prisma SD-WAN ION devices for use at branch offices and is working to build a low-level design for its sites. A typical branch site has a 10 Mbps MPLS with fiber LC-SR, and an RJ-45 Ethernet 50 Mbps DIA internet circuit. There are 75 workstations and a stacked core switch that supports LACP, M-LAG, BGP, and OSPF will be used. The core switch is the default gateway for all local VLANs. The final design will determine the selection of the appropriate model and accessories for the site.

Which statement applies to the Prisma SD-WAN architecture in this use case?

- A. MPLS underlay paths cannot be used as an active path alongside internet overlay path
- B. High availability (HA) for the LAN side connectivity can at most support two interfaces using LAG / LACP
- **C. Connectivity over the MPLS will be lost when the device that terminates it loses power**
- D. Only a default route can be advertised on a LAN-side BGP peering from the ION

Answer: C

Explanation:

In this design, the MPLS circuit is being terminated by the ION. If that device loses power, the MPLS path also goes down because the branch loses the device that is physically terminating and forwarding that private WAN connection. Prisma SD-WAN does support using private WAN and internet paths actively, so the issue is not coexistence of MPLS and DIA. It also supports LAN-side BGP beyond just advertising a default route, and LAG/LACP can bundle multiple LAN interfaces rather than being limited to only two.

NEW QUESTION # 49

A global manufacturing organization with 50,000 employees spanning 35 countries designs advanced industrial equipment and owns significant intellectual property. The organization operates in a highly competitive market where protecting trade secrets is critical to maintaining market advantage.

Over the past 18 months, the CISO discovered that employees across the organization have adopted hundreds of GenAI applications to improve productivity. Engineers use AI coding assistants to accelerate product development sales teams use AI tools

to generate proposals, and customer service representatives use chatbots to draft responses. While this adoption has driven innovation, it has also created significant security risks.

A security audit reveals sensitive CAD files uploaded to image-generation services, proprietary source code shared with public coding assistants, and confidential customer information used in prompts. The audit identifies over 300 different GenAI applications in use, most of which had not been formally reviewed or approved.

The customer service department has also been developing internal AI applications, including a customer service copilot built on a cloud large language model (LLM) platform, an internal knowledge management assistant, and a code review tool. These internal applications access sensitive databases, customer records and internal APIs - creating additional security concerns about exploitation or misuse.

The organization has a distributed workforce in which 60% of employees work remotely or in hybrid arrangements, accessing corporate resources and AI applications from various locations using managed and unmanaged devices. Existing network security infrastructure lacks AI-specific security capabilities.

Organization leadership wants to enable AI-driven innovation while implementing comprehensive security controls. The CISO has been tasked with developing an organization-wide GenAI governance program that protects sensitive assets without hindering productivity. The program must address both external AI applications employees are using and internal AI applications being developed by IT.

In which two ways would Prisma AIRS secure AI agents deployed across multiple cloud platforms in this scenario? (Choose two.)

- **A. By offering Network Intercept for infrastructure-level protection across any cloud platform and API Intercept for application-level security embedded directly in agent code.**
- B. By requiring separate product installations for each cloud platform with AWS-specific agents for Bedrock and GCP-specific agents for Vertex AI that cannot share policies.
- **C. By providing Network Intercept inline in multicloud network architectures to monitor AI agent traffic, and API Intercept as Security as Code (SaC) to scan prompts and responses before they reach models.**
- D. By supporting API Intercept for Multicloud deployments since Network Intercept cannot be deployed in the network architectures of different cloud providers.

Answer: A,C

Explanation:

Network Intercept provides inline visibility and control of AI traffic across multicloud environments, enabling consistent infrastructure-level protection regardless of where agents are deployed. API Intercept complements this by acting at the application layer, scanning prompts and responses and embedding security controls directly into AI workflows, ensuring protection before interactions reach the model.

NEW QUESTION # 50

An enterprise deploys Palo Alto NGFWs across multiple regions. They require consistent security policy enforcement and centralized management while minimizing configuration drift. Which solution should be implemented?

- **A. Panorama with device groups and templates**
- B. Manual policy synchronization
- C. Local firewall configuration only
- D. Separate management per region

Answer: A

Explanation:

Panorama provides centralized management of policies and configurations across multiple firewalls. Device groups allow consistent policy enforcement, while templates manage network and system settings. This reduces configuration drift and operational overhead compared to manual or decentralized approaches.

NEW QUESTION # 51

.....

Looking for top-notch Implementing and Operating Palo Alto Networks Network Security Architect (NetSec-Architect) exam questions? You've come to the right place! Exam4PDF offers a comprehensive and affordable solution for all your NetSec-Architect exam needs. Our NetSec-Architect Exam Questions are regularly updated, and we provide a range of attractive features to enhance your preparation, including PDF format, an online practice test engine.

