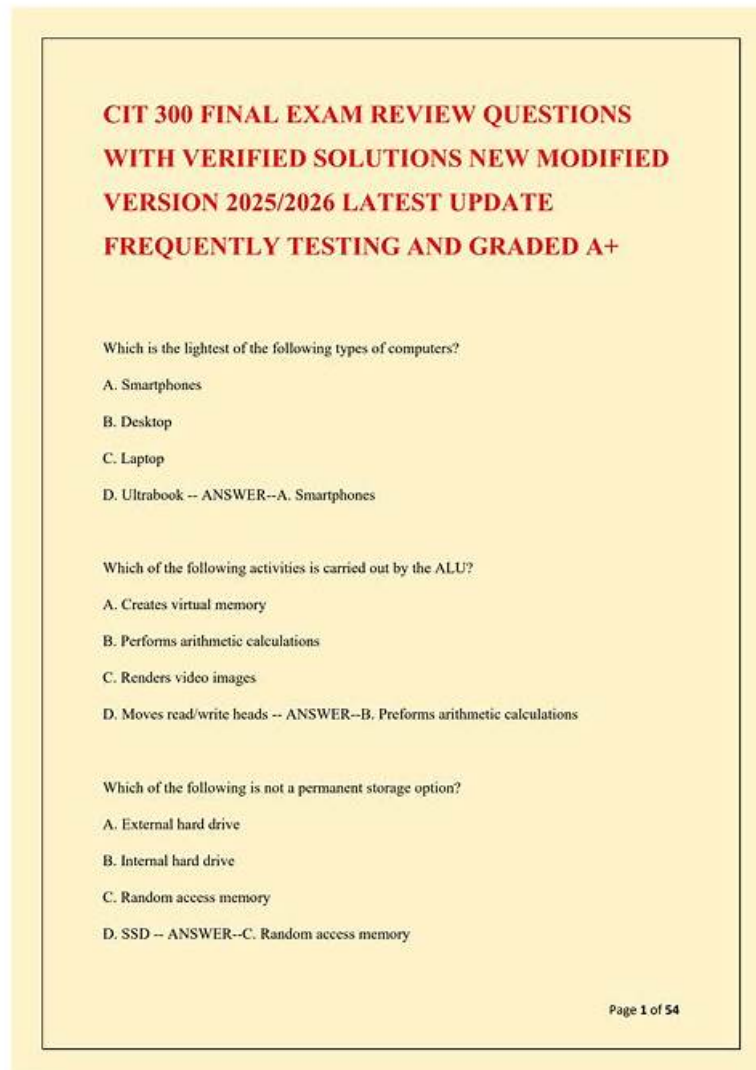


300-420 Sample Questions | High-quality Cisco 300-420: Designing Cisco Enterprise Networks



BONUS!!! Download part of PrepAwayETE 300-420 dumps for free: https://drive.google.com/open?id=1mkgFP_emYg0UGviCXOcSFVBLHMj3DqD0

No matter you are a company employee or a student, you will find that our 300-420 training quiz is priced reasonably to afford. Though the price is quite low but the quality is unparalleled high. We own numerous of loyal clients that constantly bought our 300-420 Exam Braindumps and recommended them to their friends, classmates or colleagues. Besides, we give discounts to our customers from time to time. Lots of our customers prised our 300-420 practice guide a value-added product.

Automation

This section makes up 10% of the whole content and requires that the students possess an understanding of the following processes:

- Comparing the dial-in and dial-out techniques to model-driven telemetry.
- Selecting the appropriate YANG data model set to meet the requirements;
- Explaining the influence of model-driven telemetry on networks such as periodic publication and on-change publication;
- Distinguishing between NETCONF & RESTCONF;

Passing the Cisco 300-420 Exam will demonstrate that candidates have the skills and knowledge necessary to design and implement enterprise-level networks that are efficient, resilient, and secure. Designing Cisco Enterprise Networks certification is highly valued

by employers, as it validates a candidate's ability to design and implement complex network solutions. Additionally, the CCNP Enterprise certification is a stepping stone to higher-level certifications, such as the Cisco Certified Internetwork Expert (CCIE) Enterprise Infrastructure.

>> 300-420 Sample Questions <<

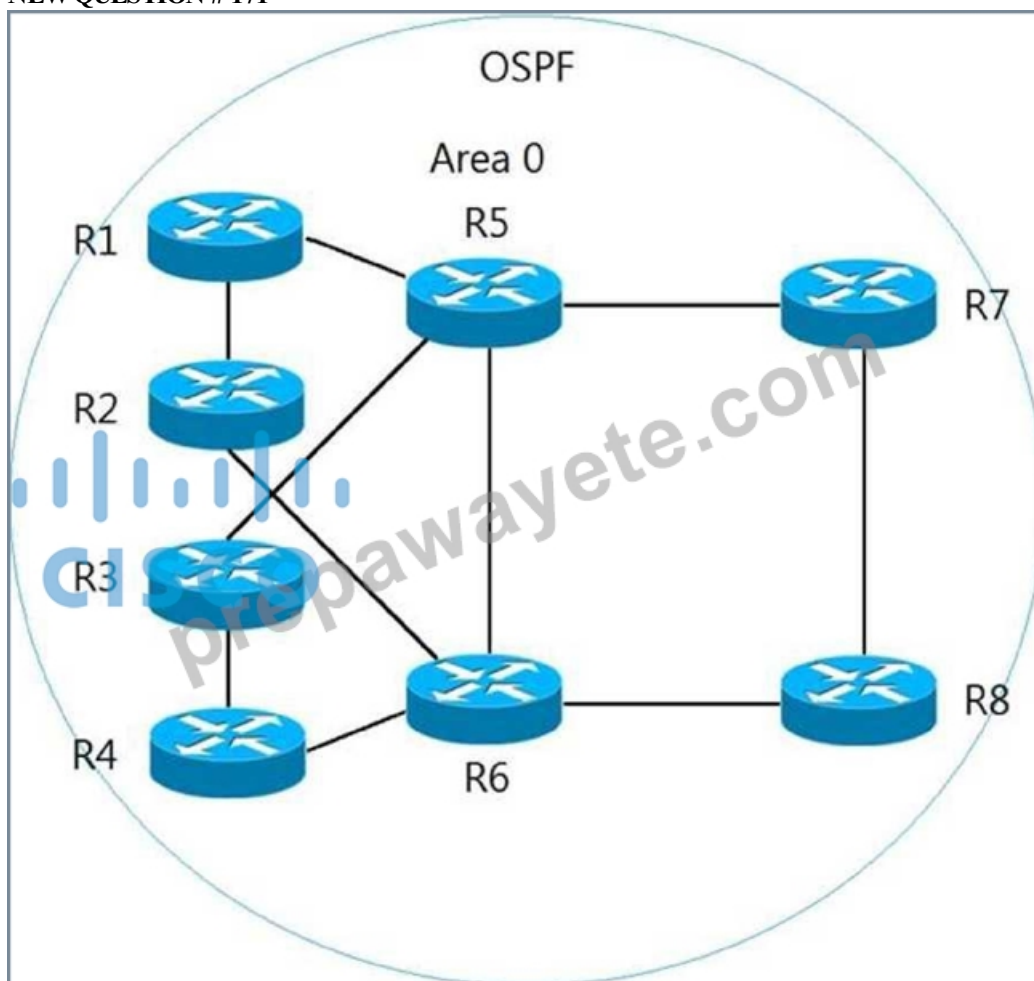
Free PDF 300-420 Sample Questions | Easy To Study and Pass Exam at first attempt & Updated 300-420: Designing Cisco Enterprise Networks

The study material to get Designing Cisco Enterprise Networks should be according to individual's learning style and experience. Real Cisco 300-420 Exam Questions certification makes you more dedicated and professional as it will provide you complete information required to work within a professional working environment. These questions will familiarize you with the 300-420 Exam Format and the content that will be covered in the actual test. You will not get a passing score if you rely on outdated practice questions.

Cisco 300-420 exam tests a candidate's knowledge in various areas, including advanced addressing and routing solutions, infrastructure services, network assurance, security services, and virtualization. 300-420 Exam is intended for network designers, network engineers, and network architects who have a solid understanding of Cisco's enterprise networking technologies and solutions.

Cisco Designing Cisco Enterprise Networks Sample Questions (Q171-Q176):

NEW QUESTION # 171



Refer to the exhibit. All routers currently reside in OSPF area 0. The network manager recently used R1 and R2 as aggregation routers for remote branch locations and R3 and R4 for aggregation routers for remote office locations. The network has since been suffering from outages, which are causing frequent SPF runs. To enhance stability and introduce areas to the OSPF network with the minimal number of ABRs possible, which two solutions should the network manager recommend? (Choose two.)

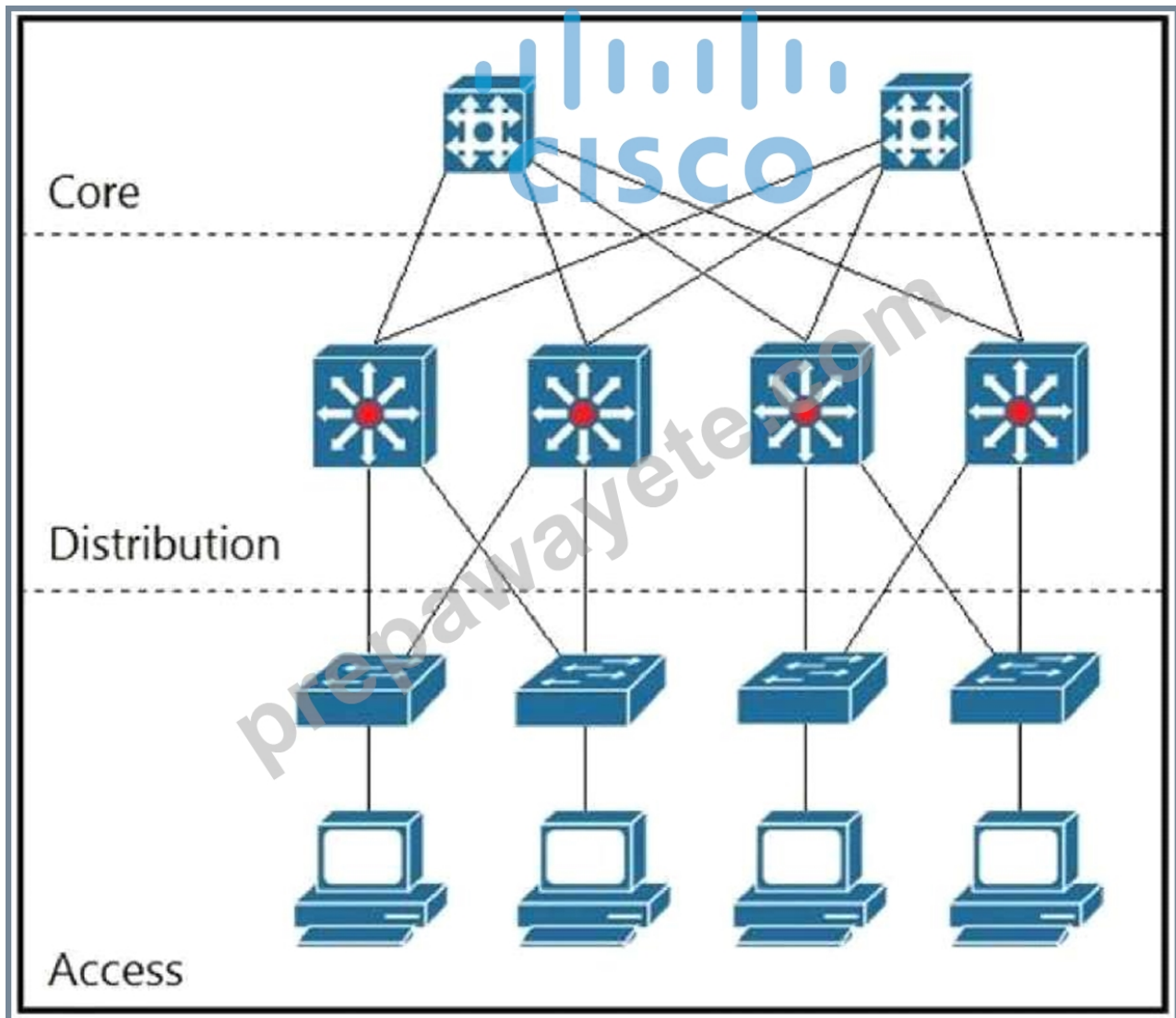
- A. a new OSPF area for R3 and R4 connections, with R3 and R4 as ABRs

- B. a new OSPF area for R1, R2, R3, and R4 connections, with R1, R2, R3, and R4 as ABRs
- C. a new OSPF area for R3 and R4 connections, with R5 and R6 as ABRs
- D. a new OSPF area for R1 and R2 connections, with R5 and R6 as ABRs
- E. a new OSPF area for R1 and R2 connections, with R1 and R2 as ABRs

Answer: C,D

NEW QUESTION # 172

Refer to the exhibit.

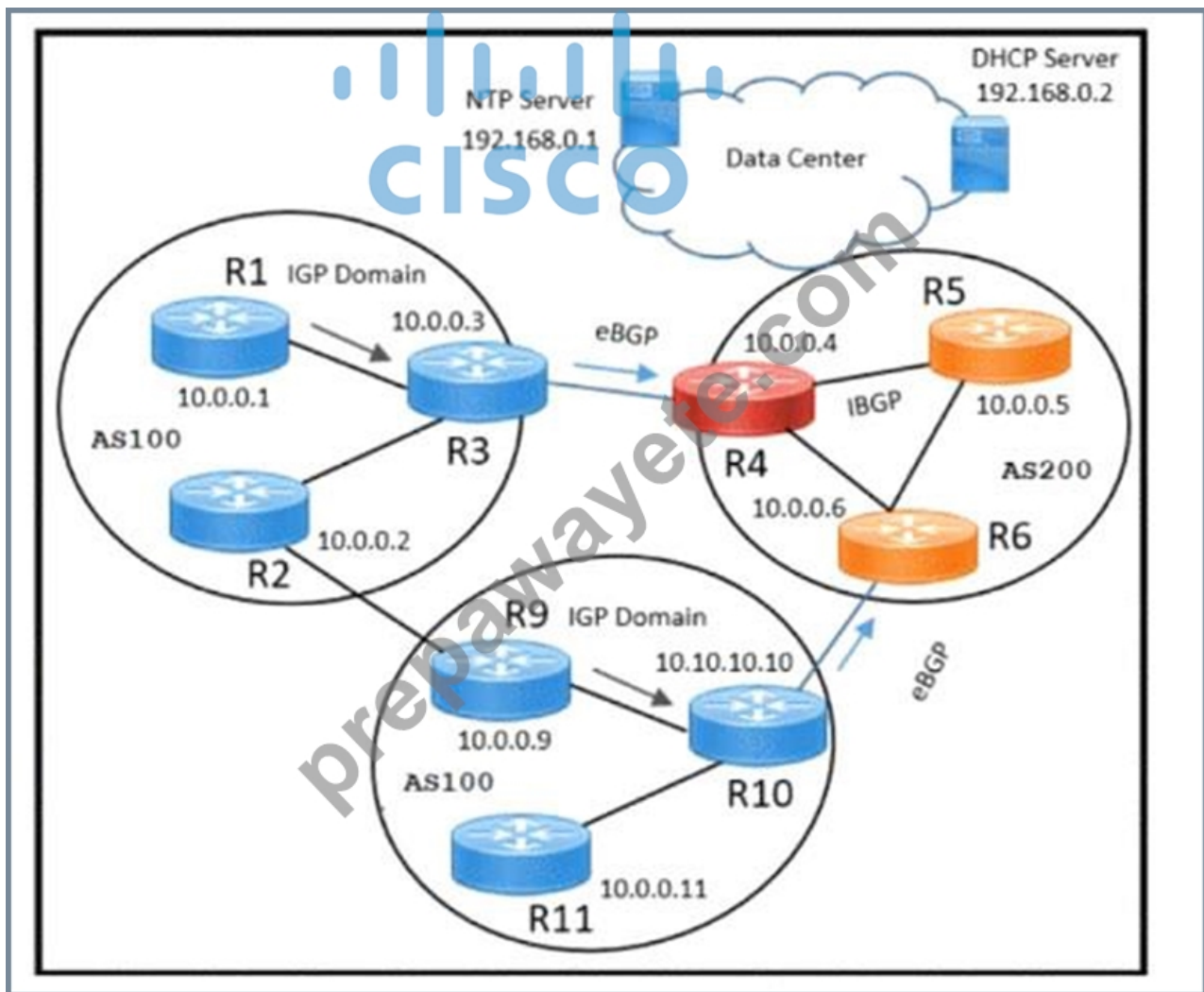


Refer to the exhibit. Which two solutions maximize the use of the links between the core and distribution layers? (Choose two.)

- A. use an IGP
- B. use HSRP
- C. use multiple unequal-cost links
- D. use R-PVSTP+
- E. use multiple equal-cost links

Answer: A,E

NEW QUESTION # 173



Refer to the exhibit. A network engineer working for a private service provider with an employee ID: 4670:71:451 must design a BGP solution based on:

- * All traffic originating from AS100 must pass through AS200 to reach the NTP and DHCP server
- * When a link failure occurs between R3 and R4, traffic must follow the R2-R9 link to reach the NTP and DHCP server.

Which solution must the design include?

- A. Router R6 influences the paths of R9 and R11 to the DC with a higher AS-PATH value.
- **B. Router R3 applies a local preference of 200 for R1, R2, R9, and R11 routers to reach the data center.**
- C. Routers R3 and R10 advertise a lower local preference for outgoing traffic and a higher AS-PATH value for incoming traffic.
- D. Routers R3 and R10 advertise an IGP metric into BGP during redistribution in both directions.

Answer: B

NEW QUESTION # 174

An engineer must use YANG with an XML representation to configure a Cisco IOS XE switch with these specifications: IP address 10.10.10.10/27 configured on the interface GigabitEthernet2/1/0 connectivity from a directly connected host 10.10.10.1/27 Which YANG data model set must the engineer choose?

A)

```

<interfaces xmlns="urn:ietf:params:xml:ns:yang:ietf-interfaces">
  <interface>
    <name>GigabitEthernet2/1/0</name>
    <type xmlns:ianaift="urn:ietf:params:xml:ns:yang:iana-if-type">ianaift:ethernetCsmacd</type>
    <enabled>false</enabled>
    <ipv4 xmlns="urn:ietf:params:xml:ns:yang:ietf-ip">
      <address>
        <ip>10.10.10.10</ip>
        <netmask>255.255.255.224</netmask>
      </address>
    </ipv4>
  </interface>
</interfaces>

```

B)

```

<interfaces YANG="urn:ietf:params:xml:ns:yang:ietf-interfaces">
  <interface>
    <name>GigabitEthernet2/1/0</name>
    <type YANG:ianaift="urn:ietf:params:xml:ns:yang:iana-if-type">ianaift:ethernetCsmacd</type>
    <enabled>true</enabled>
    <ipv4 YANG="urn:ietf:params:xml:ns:yang:ietf-ip">
      <address>
        <ip>10.10.10.10</ip>
        <netmask>255.255.255.224</netmask>
      </address>
    </ipv4>
  </interface>
</interfaces>

```

C)

```

<interfaces json="urn:ietf:params:json:ns:yang:ietf-interfaces">
  <interface>
    <name>GigabitEthernet2/1/0</name>
    <type json:ianaift="urn:ietf:params:json:ns:yang:iana-if-type">ianaift:ethernetCsmacd</type>
    <enabled>true</enabled>
    <ipv4 json="urn:ietf:params:json:ns:yang:ietf-ip">
      <address>
        <ip>10.10.10.10</ip>
        <netmask>255.255.255.224</netmask>
      </address>
    </ipv4>
  </interface>
</interfaces>

```

D)


```

<interfaces xmlns="urn:ietf:params:xml:ns:yang:ietf-interfaces">
  <interface>
    <name>GigabitEthernet2/1/0</name>
    <type xmlns:ianaift="urn:ietf:params:xml:ns:yang:iana-if-type">ianaift:ethernetCsmacd</type>
    <enabled>true</enabled>
    <ipv4 xmlns="urn:ietf:params:xml:ns:yang:ietf-ip">
      <address>
        <ip>10.10.10.10</ip>
        <netmask>255.255.255.224</netmask>
      </address>
    </ipv4>
  </interface>
</interfaces>

```

- A. Option C
- B. Option B
- **C. Option D**
- D. Option A

Answer: C

NEW QUESTION # 175

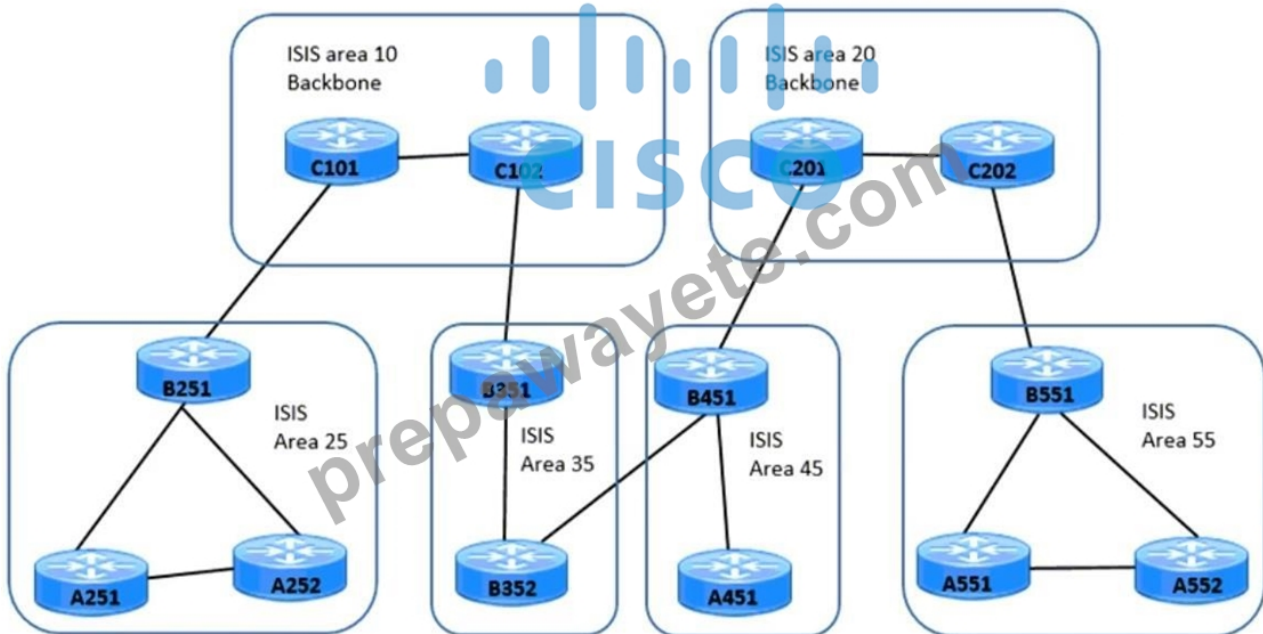
Refer to the exhibit. An engineer is designing a hierarchical ISIS solution for an enterprise customer with these requirements:

- Users in areas 25 and 55 send and receive traffic from both backbone areas.

areas.

- Link flaps in areas 35 and 45 must not impact other areas.
- Routers will double within the next 12 months in areas 35 and 45.

Which design must the engineer select?



- A. A series routers Level 1/2, B series routers Level 1/2, and C series routers Level 1/2
- **B. A series routers Level 1, B series routers Level 1/2, and C series routers Level 2**
- C. A series routers Level 1/2, B series routers Level 2, and C series routers Level 2
- D. A series routers Level 2, B series routers Level 2, and C series routers Level 1

Answer: B

NEW QUESTION # 176

.....

300-420 Reliable Test Review: <https://www.prepawayete.com/Cisco/300-420-practice-exam-dumps.html>

- Pass Guaranteed Quiz Marvelous Cisco 300-420 Sample Questions □ Download ➡ 300-420 □ for free by simply entering 「 www.practicevce.com 」 website □300-420 Latest Practice Questions
- Cisco 300-420 Sample Questions: Designing Cisco Enterprise Networks - Pdfvce One Year Free Updates □ Open ➡ www.pdfvce.com □ and search for ▷ 300-420 ◁ to download exam materials for free □Test 300-420 Preparation
- First-grade 300-420 Sample Questions by www.examcollectionpass.com □ Easily obtain free download of ✓ 300-420 □✓□ by searching on “ www.examcollectionpass.com ” □Reliable 300-420 Source
- Reliable 300-420 Exam Question □ Reliable 300-420 Exam Question □ 300-420 Trustworthy Exam Torrent □ Search for ➡ 300-420 □□□ and download it for free on ➡ www.pdfvce.com □ website □300-420 Customized Lab Simulation
- Training 300-420 Pdf □ 300-420 Valid Exam Cram □ 300-420 Valid Real Exam □ Search for ➡ 300-420 □ on [www.prepawaypdf.com] immediately to obtain a free download ♥ 300-420 Simulated Test
- Cisco 300-420 Questions - Latest Preparation Material [2026] □ Immediately open □ www.pdfvce.com □ and search for ⇒ 300-420 ⇐ to obtain a free download □300-420 Exam Assessment
- Cisco 300-420 Sample Questions: Designing Cisco Enterprise Networks - www.prepawayete.com One of 10 Leading Planform □ Search on (www.prepawayete.com) for 【 300-420 】 to obtain exam materials for free download ▶300-420 Valid Dumps Sheet
- 300-420 Valid Exam Objectives □ 300-420 Trustworthy Exam Torrent □ Training 300-420 Pdf □ Download □ 300-420 □ for free by simply entering (www.pdfvce.com) website □300-420 Valid Exam Objectives
- Pass Guaranteed Quiz Marvelous Cisco 300-420 Sample Questions □ Search for 【 300-420 】 and easily obtain a free download on ▶ www.vce4dumps.com ◀ □Verified 300-420 Answers
- 300-420 Valid Exam Objectives □ Verified 300-420 Answers □ Valid Test 300-420 Tutorial □ Search for ➡ 300-420 □ and download exam materials for free through ▶ www.pdfvce.com ◀ □Reliable 300-420 Test Pass4sure
- 300-420 Customized Lab Simulation □ Reliable 300-420 Test Pass4sure □ 300-420 Valid Real Exam □ Copy URL ➡ www.practicevce.com □□□ open and search for “ 300-420 ” to download for free □Reliable 300-420 Exam Question
- myportal.utt.edu.tt, myportal.utt.edu.tt, myportal.utt.edu.tt, myportal.utt.edu.tt, myportal.utt.edu.tt, myportal.utt.edu.tt, myportal.utt.edu.tt, myportal.utt.edu.tt, myportal.utt.edu.tt, myportal.utt.edu.tt, myportal.utt.edu.tt, myportal.utt.edu.tt, myportal.utt.edu.tt, myportal.utt.edu.tt, myportal.utt.edu.tt, myportal.utt.edu.tt, myportal.utt.edu.tt, pct.edu.pk, mpgimer.edu.in, www.stes.tyc.edu.tw, www.stes.tyc.edu.tw, zenwriting.net, www.stes.tyc.edu.tw, bbs.3927dj.com, www.stes.tyc.edu.tw, Disposable vapes

BONUS!!! Download part of PrepAwayETE 300-420 dumps for free: https://drive.google.com/open?id=1mkgFP_emYg0UGviCXOcSFVBLHMj3DqD0