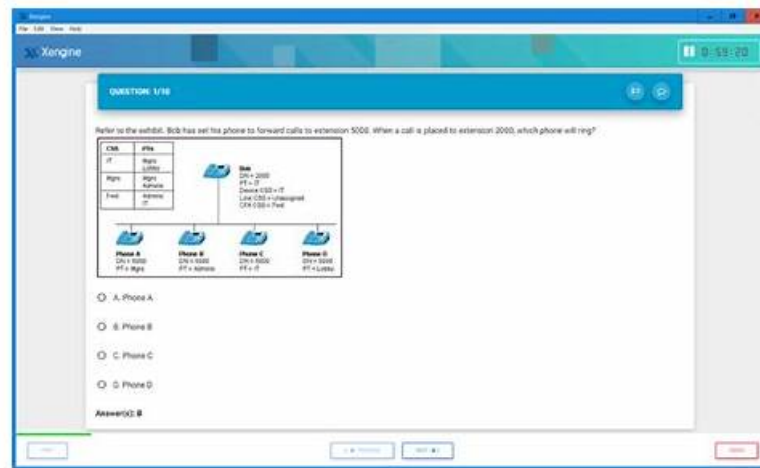


Pass Guaranteed Quiz 2026 Palo Alto Networks PSE-Strata-Pro-24: High-quality Valid Palo Alto Networks Systems Engineer Professional - Hardware Firewall Exam Sims



What's more, part of that CertkingdomPDF PSE-Strata-Pro-24 dumps now are free: https://drive.google.com/open?id=1tg_Y7EvnDLH14e_-gbs5c0020uoxwWn

If you want to be a leader in some industry, you have to continuously expand your knowledge resource. Our CertkingdomPDF always updates the exam dumps and the content of our exam software in order to ensure the PSE-Strata-Pro-24 exam software that you have are the latest and comprehensive version. No matter which process you are preparing for PSE-Strata-Pro-24 Exam, our exam software will be your best helper. As the collection and analysis of our PSE-Strata-Pro-24 exam materials are finished by our experienced and capable IT elite.

Palo Alto Networks PSE-Strata-Pro-24 Exam Syllabus Topics:

Topic	Details
Topic 1	<ul style="list-style-type: none"> Business Value and Competitive Differentiators: This section of the exam measures the skills of Technical Business Value Analysts and focuses on identifying the value proposition of Palo Alto Networks Next-Generation Firewalls (NGFWs). Candidates will assess the technical business benefits of tools like Panorama and SCM. They will also recognize customer-relevant topics and align them with Palo Alto Networks' best solutions. Additionally, understanding Strata's unique differentiators is a key component of this domain.
Topic 2	<ul style="list-style-type: none"> Deployment and Evaluation: This section of the exam measures the skills of Deployment Engineers and focuses on identifying the capabilities of Palo Alto Networks NGFWs. Candidates will evaluate features that protect against both known and unknown threats. They will also explain identity management from a deployment perspective and describe the proof of value (PoV) process, which includes assessing the effectiveness of NGFW solutions.
Topic 3	<ul style="list-style-type: none"> Architecture and Planning: This section of the exam measures the skills of Network Architects and emphasizes understanding customer requirements and designing suitable deployment architectures. Candidates must explain Palo Alto Networks' platform networking capabilities in detail and evaluate their suitability for various environments. Handling aspects like system sizing and fine-tuning is also a critical skill assessed in this domain.
Topic 4	<ul style="list-style-type: none"> Network Security Strategy and Best Practices: This section of the exam measures the skills of Security Strategy Specialists and highlights the importance of the Palo Alto Networks five-step Zero Trust methodology. Candidates must understand how to approach and apply the Zero Trust model effectively while emphasizing best practices to ensure robust network security.

Test PSE-Strata-Pro-24 Objectives Pdf, PSE-Strata-Pro-24 Reliable Test Sample

Our PSE-Strata-Pro-24 exam questions just focus on what is important and help you achieve your goal. When the reviewing process gets some tense, our PSE-Strata-Pro-24 practice materials will solve your problems with efficiency. With high-quality PSE-Strata-Pro-24 guide materials and flexible choices of learning mode, they would bring about the convenience and easiness for you. Every page is carefully arranged by our experts with clear layout and helpful knowledge to remember. In your every stage of review, our PSE-Strata-Pro-24 practice prep will make you satisfied.

Palo Alto Networks Systems Engineer Professional - Hardware Firewall Sample Questions (Q44-Q49):

NEW QUESTION # 44

A systems engineer (SE) successfully demonstrates NGFW managed by Strata Cloud Manager (SCM) to a company. In the resulting planning phase of the proof of value (POV), the CISO requests a test that shows how the security policies are either meeting, or are progressing toward meeting, industry standards such as Critical Security Controls (CSC), and how the company can verify that it is effectively utilizing the functionality purchased.

During the POV testing timeline, how should the SE verify that the POV will meet the CISO's request?

- A. At the beginning, work with the customer to create custom dashboards and reports for any information required, so reports can be pulled as needed by the customer.
- B. At the beginning, use PANhandler golden images that are designed to align to compliance and to turning on the features for the CDSS subscription being tested.
- C. Near the end, the customer pulls information from these SCM dashboards: Best Practices, CDSS Adoption, and NGFW Feature Adoption.
- D. Near the end, pull a Security Lifecycle Review (SLR) in the POV and create a report for the customer.

Answer: A

Explanation:

The SE has demonstrated an NGFW managed by SCM, and the CISO now wants the POV to show progress toward industry standards (e.g., CSC) and verify effective use of purchased features (e.g., CDSS subscriptions like Advanced Threat Prevention). The SE must ensure the POV delivers measurable evidence during the testing timeline. Let's evaluate the options.

Step 1: Understand the CISO's Request

* Industry Standards (e.g., CSC): The Center for Internet Security's Critical Security Controls (e.g., CSC 1: Inventory of Devices, CSC 4: Secure Configuration) require visibility, threat prevention, and policy enforcement, which NGFW and SCM can address.

* Feature Utilization: Confirm that licensed functionalities (e.g., App-ID, Threat Prevention, URL Filtering) are active and effective.

* POV Goal: Provide verifiable progress and utilization metrics within the testing timeline.

NEW QUESTION # 45

Which action can help alleviate a prospective customer's concerns about transitioning from a legacy firewall with port-based policies to a Palo Alto Networks NGFW with application-based policies?

- A. Discuss the PAN-OS Policy Optimizer feature as a means to safely migrate port-based rules to application-based rules.
- B. Assure the customer that the migration wizard will automatically convert port-based rules to application-based rules upon installation of the new NGFW.
- C. Recommend deploying a new NGFW firewall alongside the customer's existing port-based firewall until they are comfortable removing the port-based firewall.
- D. Reassure the customer that the NGFW supports the continued use of port-based rules, as PAN-OS automatically translates these policies into application-based policies.

Answer: A

Explanation:

A: Discuss the PAN-OS Policy Optimizer feature as a means to safely migrate port-based rules to application-based rules.

* PAN-OS includes the Policy Optimizer tool, which helps migrate legacy port-based rules to application-based policies incrementally and safely. This tool identifies unused, redundant, or overly permissive rules and suggests optimized policies based on actual traffic patterns.

Why Other Options Are Incorrect

* B: The migration wizard does not automatically convert port-based rules to application-based rules.

Migration must be carefully planned and executed using tools like the Policy Optimizer.

* C: Running two firewalls in parallel adds unnecessary complexity and is not a best practice for migration.

* D: While port-based rules are supported, relying on them defeats the purpose of transitioning to application-based security.

References:

* Palo Alto Networks Policy Optimizer

NEW QUESTION # 46

While a quote is being finalized for a customer that is purchasing multiple PA-5400 series firewalls, the customer specifies the need for protection against zero-day malware attacks.

Which Cloud-Delivered Security Services (CDSS) subscription add-on license should be included in the quote?

- A. AI Access Security
- B. App-ID
- C. Advanced Threat Prevention
- **D. Advanced WildFire**

Answer: D

Explanation:

Zero-day malware attacks are sophisticated threats that exploit previously unknown vulnerabilities or malware signatures. To provide protection against such attacks, the appropriate Cloud-Delivered Security Service subscription must be included.

* Why "Advanced WildFire" (Correct Answer C)? Advanced WildFire is Palo Alto Networks' sandboxing solution that identifies and prevents zero-day malware. It uses machine learning, dynamic analysis, and static analysis to detect unknown malware in real time.

* Files and executables are analyzed in the cloud-based sandbox, and protections are shared globally within minutes.

* Advanced WildFire specifically addresses zero-day threats by dynamically analyzing suspicious files and generating new signatures.

* Why not "AI Access Security" (Option A)? AI Access Security is designed to secure SaaS applications by monitoring and enforcing data protection and compliance. While useful for SaaS security, it does not focus on detecting or preventing zero-day malware.

* Why not "Advanced Threat Prevention" (Option B)? Advanced Threat Prevention (ATP) focuses on detecting zero-day exploits (e.g., SQL injection, buffer overflows) using inline deep learning but is not specifically designed to analyze and prevent zero-day malware. ATP complements Advanced WildFire, but WildFire is the primary solution for malware detection.

* Why not "App-ID" (Option D)? App-ID identifies and controls applications on the network. While it improves visibility and security posture, it does not address zero-day malware detection or prevention.

Reference: Palo Alto Networks Advanced WildFire documentation confirms its role in detecting and preventing zero-day malware through advanced analysis techniques.

NEW QUESTION # 47

A security engineer has been tasked with protecting a company's on-premises web servers but is not authorized to purchase a web application firewall (WAF).

Which Palo Alto Networks solution will protect the company from SQL injection zero-day, command injection zero-day, Cross-Site Scripting (XSS) attacks, and IIS exploits?

- A. Threat Prevention, Advanced URL Filtering, and PAN-OS 10.2 (and higher)
- **B. Advanced Threat Prevention and PAN-OS 11.x**
- C. Advanced WildFire and PAN-OS 10.0 (and higher)
- D. Threat Prevention and PAN-OS 11.x

Answer: B

Explanation:

Protecting web servers from advanced threats like SQL injection, command injection, XSS attacks, and IIS exploits requires a

solution capable of deep packet inspection, behavioral analysis, and inline prevention of zero-day attacks. The most effective solution here is Advanced Threat Prevention (ATP) combined with PAN-OS 11.x.

* Why "Advanced Threat Prevention and PAN-OS 11.x" (Correct Answer B)? Advanced Threat Prevention (ATP) enhances traditional threat prevention by using inline deep learning models to detect and block advanced zero-day threats, including SQL injection, command injection, and XSS attacks.

With PAN-OS 11.x, ATP extends its detection capabilities to detect unknown exploits without relying on signature-based methods. This functionality is critical for protecting web servers in scenarios where a dedicated WAF is unavailable.

ATP provides the following benefits:

* Inline prevention of zero-day threats using deep learning models.

* Real-time detection of attacks like SQL injection and XSS.

* Enhanced protection for web server platforms like IIS.

* Full integration with the Palo Alto Networks Next-Generation Firewall (NGFW).

* Why not "Threat Prevention and PAN-OS 11.x" (Option A)? Threat Prevention relies primarily on signature-based detection for known threats. While it provides basic protection, it lacks the capability to block zero-day attacks using advanced methods like inline deep learning. For zero-day SQL injection and XSS attacks, Threat Prevention alone is insufficient.

* Why not "Threat Prevention, Advanced URL Filtering, and PAN-OS 10.2 (and higher)" (Option C)? While this combination includes Advanced URL Filtering (useful for blocking malicious URLs associated with exploits), it still relies on Threat Prevention, which is signature-based. This combination does not provide the zero-day protection needed for advanced injection attacks or XSS vulnerabilities.

* Why not "Advanced WildFire and PAN-OS 10.0 (and higher)" (Option D)? Advanced WildFire is focused on analyzing files and executables in a sandbox environment to identify malware. While it is excellent for identifying malware, it is not designed to provide inline prevention for web-based injection attacks or XSS exploits targeting web servers.

NEW QUESTION # 48

A company has multiple business units, each of which manages its own user directories and identity providers (IdPs) with different domain names. The company's network security team wants to deploy a shared GlobalProtect remote access service for all business units to authenticate users to each business unit's IdP.

Which configuration will enable the network security team to authenticate GlobalProtect users to multiple SAML IdPs?

- A. Authentication sequence that has multiple authentication profiles using different authentication methods
- **B. GlobalProtect with multiple authentication profiles for each SAML IdP**
- C. Multiple Cloud Identity Engine tenants for each business unit
- D. Multiple authentication mode Cloud Identity Engine authentication profile for use on the GlobalProtect portals and gateways

Answer: B

Explanation:

To configure GlobalProtect to authenticate users from multiple SAML identity providers (IdPs), the correct approach involves creating multiple authentication profiles, one for each IdP. Here's the analysis of each option:

* Option A: GlobalProtect with multiple authentication profiles for each SAML IdP

* GlobalProtect allows configuring multiple SAML authentication profiles, each corresponding to a specific IdP.

* These profiles are associated with the GlobalProtect portal or gateway. When users attempt to authenticate, they can be directed to the appropriate IdP based on their domain or other attributes.

* This is the correct approach to enable authentication for users from multiple IdPs.

* Option B: Multiple authentication mode Cloud Identity Engine authentication profile for use on the GlobalProtect portals and gateways

* The Cloud Identity Engine (CIE) can synchronize identities from multiple directories, but it does not directly support multiple SAML IdPs for a shared GlobalProtect setup.

* This option is not applicable.

* Option C: Authentication sequence that has multiple authentication profiles using different authentication methods

* Authentication sequences allow multiple authentication methods (e.g., LDAP, RADIUS, SAML) to be tried in sequence for the same user, but they are not designed for handling multiple SAML IdPs.

* This option is not appropriate for the scenario.

* Option D: Multiple Cloud Identity Engine tenants for each business unit

* Deploying multiple CIE tenants for each business unit adds unnecessary complexity and is not required for configuring GlobalProtect to authenticate users to multiple SAML IdPs.

* This option is not appropriate.

NEW QUESTION # 49

.....

Our PSE-Strata-Pro-24 Exam Torrent carries no viruses. We provide free update and online customer service which works on the line whole day. Our study materials provide varied versions for you to choose and the learning costs you little time and energy. You can use our PSE-Strata-Pro-24 exam prep immediately after you purchase them, we will send our product within 5-10 minutes to you. We treat your time as our own time, as precious as you see, so we never waste a minute or two in some useless process. Please rest assured that use, we believe that you will definitely pass the exam.

Test PSE-Strata-Pro-24 Objectives Pdf: <https://www.certkingdompdf.com/PSE-Strata-Pro-24-latest-certkingdom-dumps.html>

- PSE-Strata-Pro-24 Valid Exam Tips ☐ PSE-Strata-Pro-24 Examcollection Dumps ☐ Exam PSE-Strata-Pro-24 Training ☐ Easily obtain ✓ PSE-Strata-Pro-24 ☐ ✓ ☐ for free download through **【 www.vceengine.com 】** ☐ PSE-Strata-Pro-24 Minimum Pass Score
- Dumps PSE-Strata-Pro-24 PDF ☐ Dumps PSE-Strata-Pro-24 PDF ☐ PSE-Strata-Pro-24 Free Exam ☐ Open 「 www.pdfvce.com 」 enter “PSE-Strata-Pro-24 ” and obtain a free download ☐ PSE-Strata-Pro-24 Free Exam
- Test PSE-Strata-Pro-24 Collection ☐ PSE-Strata-Pro-24 Examcollection Dumps ☐ Visual PSE-Strata-Pro-24 Cert Test ☐ Go to website ☐ www.dumpsmaterials.com ☐ open and search for ➡ PSE-Strata-Pro-24 ☐ to download for free ☐ PSE-Strata-Pro-24 Real Brain Dumps
- Free PDF 2026 Palo Alto Networks High-quality Valid PSE-Strata-Pro-24 Exam Sims ☐ Search for ➡ PSE-Strata-Pro-24 ☐ and download it for free immediately on ☐ www.pdfvce.com ☐ ☐ PSE-Strata-Pro-24 Valid Exam Tips
- PSE-Strata-Pro-24 Minimum Pass Score ☐ PSE-Strata-Pro-24 Test Prep ☐ PSE-Strata-Pro-24 Free Exam ☐ Search for ✨ PSE-Strata-Pro-24 ☐ ✨ ☐ on ☐ www.vceengine.com ☐ immediately to obtain a free download ☐ PSE-Strata-Pro-24 Latest Test Simulations
- Valid PSE-Strata-Pro-24 Test Sims ☐ PSE-Strata-Pro-24 Real Brain Dumps ☐ New PSE-Strata-Pro-24 Test Camp ☐ ☐ Search for ✨ PSE-Strata-Pro-24 ☐ ✨ ☐ on ➤ www.pdfvce.com ☐ immediately to obtain a free download ☐ PSE-Strata-Pro-24 Valid Exam Tips
- Dumps PSE-Strata-Pro-24 PDF ☐ Latest PSE-Strata-Pro-24 Dumps Pdf ☐ PSE-Strata-Pro-24 Test Prep ☐ Search for ☐ PSE-Strata-Pro-24 ☐ on ➡ www.testkingpass.com ☐ ☐ immediately to obtain a free download ☐ PSE-Strata-Pro-24 Valid Test Syllabus
- 2026 Authoritative Valid PSE-Strata-Pro-24 Exam Sims | 100% Free Test Palo Alto Networks Systems Engineer Professional - Hardware Firewall Objectives Pdf ☐ Simply search for > PSE-Strata-Pro-24 < for free download on ☐ www.pdfvce.com ☐ ☐ PSE-Strata-Pro-24 Real Brain Dumps
- Free PDF 2026 Palo Alto Networks High-quality Valid PSE-Strata-Pro-24 Exam Sims ☐ Enter { www.prepawayete.com } and search for ☐ PSE-Strata-Pro-24 ☐ to download for free ☐ PSE-Strata-Pro-24 Valid Exam Tips
- PSE-Strata-Pro-24 Latest Test Simulations ☐ Latest PSE-Strata-Pro-24 Dumps Pdf ☐ PSE-Strata-Pro-24 Latest Test Materials ☐ Search on ☐ www.pdfvce.com ☐ for (PSE-Strata-Pro-24) to obtain exam materials for free download ☐ ☐ PSE-Strata-Pro-24 Valid Test Syllabus
- PSE-Strata-Pro-24 Reliable Test Camp ☐ PSE-Strata-Pro-24 Real Brain Dumps ☐ PSE-Strata-Pro-24 Latest Test Simulations ☐ Easily obtain ✨ PSE-Strata-Pro-24 ☐ ✨ ☐ for free download through ☐ www.pass4test.com ☐ ☐ PSE-Strata-Pro-24 Examcollection Dumps
- bringleacademy.com, stackblitz.com, p.me-page.com, lms.ait.edu.za, www.stes.tyc.edu.tw, motionentrance.edu.np, myportal.utt.edu.tt, myportal.utt.edu.tt, myportal.utt.edu.tt, myportal.utt.edu.tt, myportal.utt.edu.tt, myportal.utt.edu.tt, myportal.utt.edu.tt, myportal.utt.edu.tt, www.stes.tyc.edu.tw, excelcommunityliving.website, disqus.com, Disposable vapes

P.S. Free 2025 Palo Alto Networks PSE-Strata-Pro-24 dumps are available on Google Drive shared by CertkingdomPDF:
https://drive.google.com/open?id=1tg_Y7EvnDLIH4e_-gbs5c0020uoxwWn