

Pass Guaranteed 2026 Updated Microsoft MS-102: Microsoft 365 Administrator Examcollection Free Dumps



BONUS!!! Download part of DumpsQuestion MS-102 dumps for free: <https://drive.google.com/open?id=1XcWP7InTYoLohsxCEA6d7zI3fpwWd-Lz>

Laziness will ruin your life one day. It is time to have a change now. Although we all love cozy life, we must work hard to create our own value. Then our MS-102 training materials will help you overcome your laziness. Study is the best way to enrich your life. On one hand, you may learn the newest technologies in the field with our MS-102 Study Guide to help you better adapt to your work, and on the other hand, you will pass the MS-102 exam and achieve the certification which is the symbol of competence.

The DumpsQuestion is one of the leading platforms that have been offering valid, updated, and real Microsoft MS-102 exam dumps for many years. The Microsoft 365 Administrator MS-102 practice test questions offered by the DumpsQuestion are designed and verified by experienced Microsoft MS-102 Certification Exam trainers. They work together and put all their expertise to ensure the top standard of Microsoft 365 Administrator MS-102 valid dumps.

>> MS-102 Examcollection Free Dumps <<

MS-102 Valid Exam Voucher, MS-102 Valid Study Questions

For certificates who will attend the exam, some practice is evitable. But sometimes, time for preparation is quite urgent. MS-102 exam braindumps of us will help you to use the least time to pass the exam. If you choose the MS-102 exam dumps of us, you just need to spend about 48 to 72 hours to practice and you can pass the exam successfully. In addition, MS-102 Exam Dumps are verified by experienced experts, and the accuracy and correctness can be guaranteed. And we pass guarantee and money back guarantee if can't pass the exam.

Microsoft 365 Administrator Sample Questions (Q132-Q137):

NEW QUESTION # 132

You have a Microsoft 365 E5 subscription that uses Microsoft Intune.

You need to access service health alerts from a mobile phone.

What should you use?

- A. the Microsoft 365 Admin mobile app
- B. Intune Company Portal
- C. the Intune app
- D. the Microsoft Authenticator app

Answer: A

NEW QUESTION # 133

HOTSPOT

Your network contains an on-premises Active Directory domain and a Microsoft 365 subscription. The domain contains the users shown in the following table.

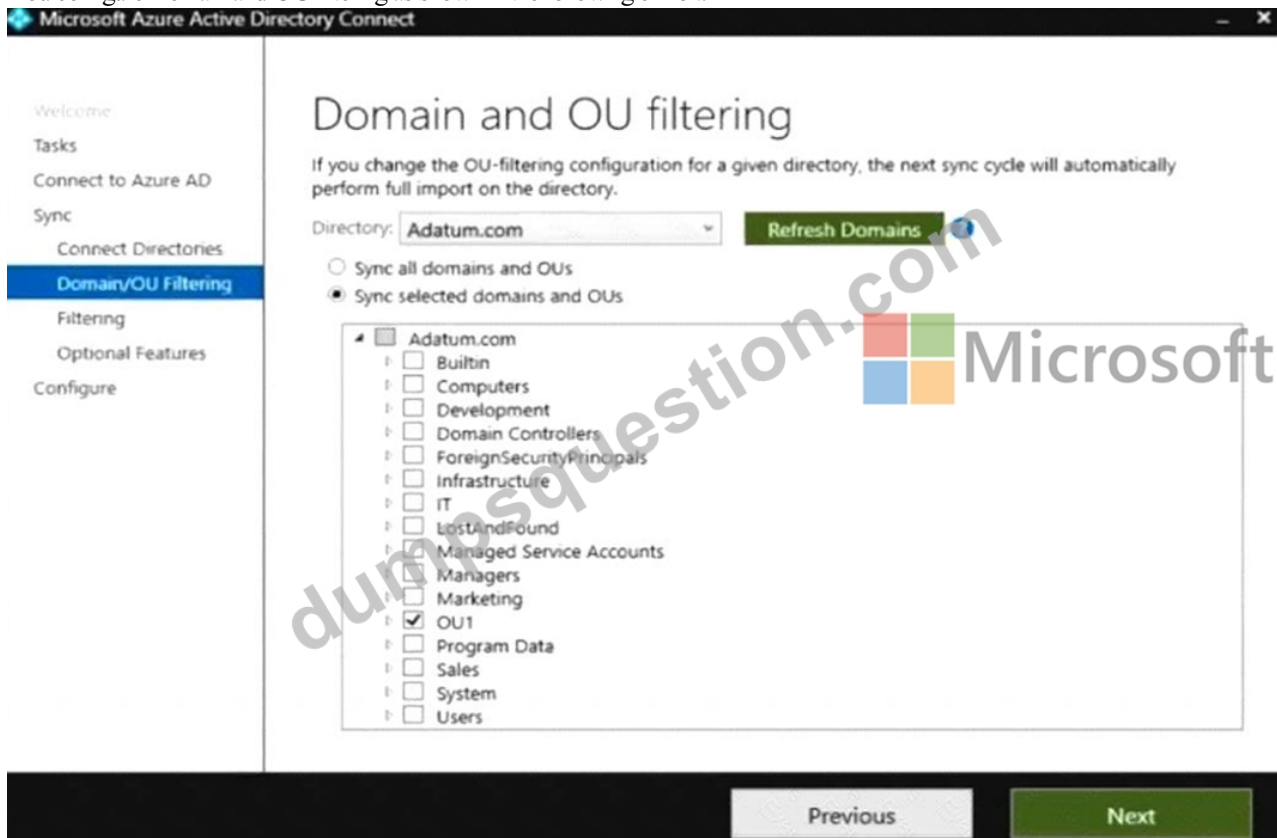
Name	Member of	In organizational unit (OU)
User1	Group1	OU1
User2	Group2	OU1

The domain contains the groups shown in the following table.

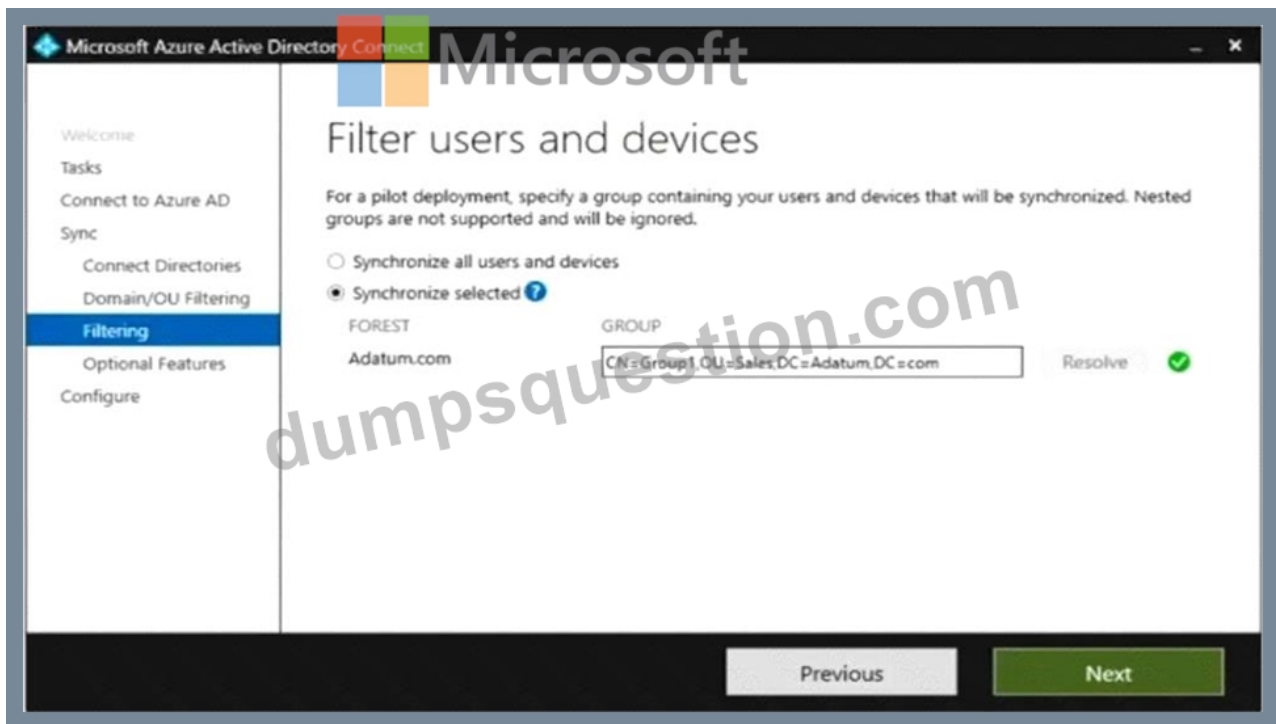
Name	Member of	In OU
Group1	None	Sales
Group2	Group1	OU1

You are deploying Azure AD Connect.

You configure Domain and OU filtering as shown in the following exhibit.



You configure Filter users and devices as shown in the following exhibit.



For each of the following statements, select Yes if the statement is true. Otherwise, select No.
NOTE: Each correct selection is worth one point.

Statements	Yes	No
User1 syncs to Azure AD.	<input checked="" type="checkbox"/>	<input type="checkbox"/>
User2 syncs to Azure AD.	<input type="checkbox"/>	<input type="checkbox"/>
Group2 syncs to Azure AD.	<input type="checkbox"/>	<input type="checkbox"/>

Answer:

Explanation:

Answer Area

Statements	Yes	No
User1 syncs to Azure AD.	<input checked="" type="checkbox"/>	<input checked="" type="checkbox"/>
User2 syncs to Azure AD.	<input type="checkbox"/>	<input checked="" type="checkbox"/>
Group2 syncs to Azure AD.	<input type="checkbox"/>	<input checked="" type="checkbox"/>

Explanation



Microsoft

Statements

Yes

No

User1 syncs to Azure AD.

☐☐

User2 syncs to Azure AD.

☐☐

Group2 syncs to Azure AD.

☐☐

NEW QUESTION # 134

You need to meet the technical requirement for log analysis.

What is the minimum number of data sources and log collectors you should create from Microsoft Cloud App Security? To answer, select the appropriate options in the answer area.

NOTE: Each correct selection is worth one point.

Minimum number of data sources:

▼

1

3

6

Minimum number of log collectors:

▼

1

3

6



Answer:

Explanation:

Minimum number of data sources:

Minimum number of log collectors:

Microsoft

Explanation

Minimum number of data sources:

Minimum number of log collectors:

Microsoft

References:

<https://docs.microsoft.com/en-us/cloud-app-security/discovery-docker>

Topic 3, Litware Inc.

Case Study

This is a case study. Case studies are not timed separately. You can use as much exam time as you would like to complete each case. However, there may be additional case studies and sections on this exam. You must manage your time to ensure that you are able to complete all questions included on this exam in the time provided.

To answer the questions included in a case study, you will need to reference information that is provided in the case study. Case studies might contain exhibits and other resources that provide more information about the scenario that is described in the case study. Each question is independent of the other questions in this case study.

At the end of this case study, a review screen will appear. This screen allows you to review your answers and to make changes before you move to the next section of the exam. After you begin a new section, you cannot return to this section.

To start the case study

To display the first question in this case study, click the button. Use the buttons in the left pane to explore the content of the case study before you answer the questions. Clicking these buttons displays information such as business requirements, existing environment, and problem statements. If the case study has an All Information tab, note that the information displayed is identical to the information displayed on the subsequent tabs. When you are ready to answer a question, click the button to return to the question.

Overview

General Overviews

Litware, Inc. is a technology research company. The company has a main office in Montreal and a branch office in Seattle.

Environment

Existing Environment

The network contains an on-premises Active Directory domain named litware.com. The domain contains the users shown in the following table.

Name	Office
User1	Montreal
User2	Montreal
User3	Seattle
User4	Seattle

Microsoft Cloud Environment

Litware has a Microsoft 365 subscription that contains a verified domain named litware.com. The subscription syncs to the on-premises domain.

Litware uses Microsoft Intune for device management and has the enrolled devices shown in the following table.

Name	Platform
Device1	Windows 10
Device2	Windows 8.1
Device3	MacOS
Device4	iOS
Device5	Android

Litware.com contains the security groups shown in the following table.

Name	Members
UserGroup1	All the users in the Montreal office
UserGroup2	All the users in the Seattle office
DeviceGroup1	All the devices in the Montreal office
DeviceGroup2	All the devices in the Seattle office

Litware uses Microsoft SharePoint Online and Microsoft Teams for collaboration.

The verified domain is linked to an Azure Active Directory (Azure AD) tenant named litware.com. Audit log search is turned on for the litware.com tenant.

Problem Statements

Litware identifies the following issues:

Users open email attachments that contain malicious content.

Devices without an assigned compliance policy show a status of Compliant.

User1 reports that the Sensitivity option in Microsoft Office for the web fails to appear.

Internal product codes and confidential supplier ID numbers are often shared during Microsoft Teams meetings and chat sessions that include guest users and external users.

Requirements

Planned Changes

Litware plans to implement the following changes:

Implement device configuration profiles that will configure the endpoint protection template settings for supported devices.

Configure information governance for Microsoft OneDrive, SharePoint Online, and Microsoft Teams.

Implement data loss prevention (DLP) policies to protect confidential information.

Grant User2 permissions to review the audit logs of the litware.com tenant.

Deploy new devices to the Seattle office as shown in the following table.

Name	Platform
Device6	Windows 10
Device7	Windows 10
Device8	iOS
Device9	Android
Device10	Android

Implement a notification system for when DLP policies are triggered.

Configure a Safe Attachments policy for the litware.com tenant.

Technical Requirements

Litware identifies the following technical requirements:

Retention settings must be applied automatically to all the data stored in SharePoint Online sites, OneDrive accounts, and Microsoft Teams channel messages, and the data must be retained for five years.

Emails messages that contain attachments must be delivered immediately, and placeholder must be provided for the attachments until

scanning is complete.

All the Windows 10 devices in the Seattle office must be enrolled in Intune automatically when the devices are joined to or registered with Azure AD.

Devices without an assigned compliance policy must show a status of Not Compliant in the Microsoft Endpoint Manager admin center.

A notification must appear in the Microsoft 365 compliance center when a DLP policy is triggered.

User2 must be granted the permissions to review audit logs for the following activities:

- Admin activities in Microsoft Exchange Online
- Admin activities in SharePoint Online
- Admin activities in Azure AD

Users must be able to apply sensitivity labels to documents by using Office for the web.

Windows Autopilot must be used for device provisioning, whenever possible.

A DLP policy must be created to meet the following requirements:

- Confidential information must not be shared in Microsoft Teams chat sessions, meetings, or channel messages.
- Messages that contain internal product codes or supplier ID numbers must be blocked and deleted.

The principle of least privilege must be used.

NEW QUESTION # 135

You have a Microsoft 365 E5 subscription that contains two Microsoft SharePoint Online sites named Site1 and Site2.

You have the documents shown in the following table.

Name	Number of credit card numbers in the document	Number of SWIFT codes in the document	Stored on
Document1	3	3	Site1
Document2	7	2	Site2
Document3	15	0	Site1

You DLP1 that has the advanced DLP rule as shown in the exhibit. (Click the Exhibit tab.) You apply DLP1 to Site1.

For each of the following statements, select Yes if the statement is true. Otherwise, select No.

NOTE: Each correct selection is worth one point.

Answer Area

Statements	Yes	No
DLP1 applies to Document1.	<input type="radio"/>	<input type="radio"/>
DLP1 applies to Document2.	<input type="radio"/>	<input type="radio"/>
DLP1 applies to Document3.	<input type="radio"/>	<input type="radio"/>

Answer:

Explanation:

Answer Area

Statements	Yes	No
DLP1 applies to Document1.	<input type="radio"/>	<input checked="" type="radio"/>
DLP1 applies to Document2.	<input type="radio"/>	<input checked="" type="radio"/>
DLP1 applies to Document3.	<input type="radio"/>	<input checked="" type="radio"/>

Explanation:

Answer Area

Statements	Yes	No
DLP1 applies to Document1.	<input type="radio"/>	<input checked="" type="radio"/>
DLP1 applies to Document2.	<input type="radio"/>	<input checked="" type="radio"/>
DLP1 applies to Document3.	<input type="radio"/>	<input checked="" type="radio"/>

NEW QUESTION # 136

You have 2,500 Windows 10 devices and a Microsoft 365 E5 tenant that contains two users named User1 and User2. The devices are not enrollment in Microsoft Intune.

In Microsoft Endpoint Manager, the Device limit restrictions are configured as shown in the following exhibit.

Device limit restrictions

Define how many devices each user can enroll.

Priority	Name	Device limit	Assigned
Default	Users	2	Yes

In Azure Active Directory (Azure AD), the Device settings are configured as shown in the following exhibit.

Users may register their devices with Azure AD ⓘ

☒ All ☐ None

[Learn more on how this setting works](#)

Require Multi-Factor Auth to join devices ⓘ

☒ Yes ☐ No

Maximum number of devices per user ⓘ

5

From Microsoft Endpoint Manager, you add User2 as a device enrollment manager (DEM).

For each of the following statement, select Yes if the statement is true. Otherwise, select No.

NOTE: Each correct selection is worth one point.

Answer Area

Statements	Yes	No
User1 can enroll only five devices in Intune.	<input type="radio"/>	<input type="radio"/>
User1 can join only five devices to Azure AD.	<input type="radio"/>	<input type="radio"/>
User2 can enroll all the devices in Intune.	<input type="radio"/>	<input type="radio"/>

Answer:

Explanation:

Answer Area



Microsoft

Statements	Yes	No
User1 can enroll only five devices in Intune.	<input type="radio"/>	<input checked="" type="radio"/>
User1 can join only five devices to Azure AD.	<input type="radio"/>	<input checked="" type="radio"/>
User2 can enroll all the devices in Intune.	<input checked="" type="radio"/>	<input type="radio"/>

Explanation:

Answer Area



Microsoft

Statements	Yes	No
User1 can enroll only five devices in Intune.	<input type="radio"/>	<input checked="" type="radio"/>
User1 can join only five devices to Azure AD.	<input type="radio"/>	<input checked="" type="radio"/>
User2 can enroll all the devices in Intune.	<input checked="" type="radio"/>	<input type="radio"/>

NEW QUESTION # 137

.....

We know that every user has their favorite. Therefore, we have provided three versions of MS-102 practice guide: the PDF, the Software and the APP online. You can choose according to your actual situation. If you like to use computer to learn, you can use the Software and the APP online versions of the MS-102 Exam Questions. If you like to write your own experience while studying, you can choose the PDF version of the MS-102 study materials. Our PDF version can be printed and you can take notes as you like.

MS-102 Valid Exam Voucher: <https://www.dumpsquestion.com/MS-102-exam-dumps-collection.html>

Microsoft MS-102 Examcollection Free Dumps The reason for its great popularity is that it is quite convenient for reading. With the help of MS-102 reliable exam practice, you can just spend 20-30 hours for the preparation. We can speak confidently the MS-102 training materials are the best and fastest manner for you to pass the exam. DumpsQuestion have made this format so that users don't face the hassles of installing software while preparing for the Microsoft 365 Administrator (MS-102) certification.

Also, there's an EQ built right into iTunes as well, so MS-102 you can make the songs on your computer sound better, too. How to use the seven OpenGL geometric primitives.

The reason for its great popularity is that it is quite convenient for reading. With the help of MS-102 Reliable Exam Practice, you can just spend 20-30 hours for the preparation.

Quiz Reliable Microsoft - MS-102 - Microsoft 365 Administrator Examcollection Free Dumps

We can speak confidently the MS-102 training materials are the best and fastest manner for you to pass the exam. DumpsQuestion have made this format so that users don't face the hassles of installing software while preparing for the Microsoft 365 Administrator (MS-102) certification.

We keep our MS-102 training material pdf the latest by checking the newest information about the updated version every day.

- 2026 Valid Microsoft MS-102: Microsoft 365 Administrator Examcollection Free Dumps ☐ Open ☐ www.prepawaypdf.com ☐ enter **【 MS-102 】** and obtain a free download ☐ MS-102 Exam Dump
- Valid MS-102 Practice Questions ☐ Valid Real MS-102 Exam ☐ Examcollection MS-102 Free Dumps ☐ Open ▶ www.pdfvce.com ◀ enter ☐ MS-102 ☐ and obtain a free download ☐ Practical MS-102 Information
- MS-102 Examcollection Free Dumps - Efficient MS-102 Valid Exam Voucher and First-Grade Microsoft 365 Administrator Valid Study Questions ☒ Open ➡ www.exam4labs.com ☐ ☐ and search for ▶ MS-102 ◀ to download exam materials for free ☐ MS-102 Exam Questions Pdf
- Quiz Useful MS-102 - Microsoft 365 Administrator Examcollection Free Dumps ☐ Search on ☐ www.pdfvce.com ☐ for ➡ MS-102 ☐ ☐ to obtain exam materials for free download ☐ MS-102 Exam Questions Pdf
- MS-102 Exam Dump ☐ New MS-102 Test Duration ☐ MS-102 New Exam Camp ☐ Search on ▶ www.pass4test.com ◀ for ☐ MS-102 ☐ to obtain exam materials for free download ☐ MS-102 Interactive Course
- Valid Real MS-102 Exam ☐ MS-102 Simulation Questions ☐ MS-102 Exam Prep ☐ Go to website 「 www.pdfvce.com 」 open and search for ➡ MS-102 ☐ to download for free ☐ MS-102 Exam Questions Pdf

- DOWNLOAD the newest DumpsQuestion MS-102 PDF dumps from Cloud Storage for free: <https://drive.google.com/open?id=1XcWP7InTYoLohsxCEA6d7zJ3fpwWd-Lz>

DOWNLOAD the newest DumpsQuestion MS-102 PDF dumps from Cloud Storage for free: <https://drive.google.com/open?id=1XcWP7InTYoLohsxCEA6d7zJ3fpwWd-Lz>