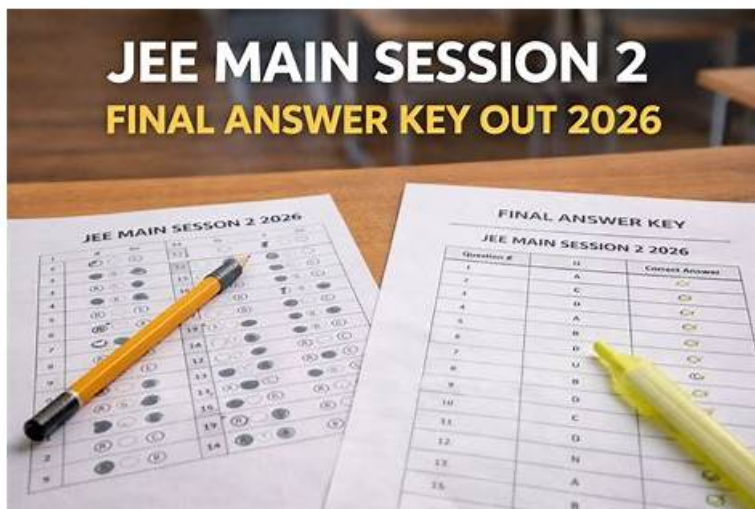


JN0-224 Examcollection Questions Answers | Reliable JN0-224 Test Materials



BTW, DOWNLOAD part of TrainingQuiz JN0-224 dumps from Cloud Storage: https://drive.google.com/open?id=1-nM6yF4ZhxAhPS-SPA45CNm7e_4oKahs

Why our JN0-224 exam questions are the most popular in this field? On the one hand, according to the statistics from the feedback of all of our customers, the pass rate among our customers who prepared for the JN0-224 exam with the help of our JN0-224 guide torrent has reached as high as 98% to 100%. On the other hand, the simulation test is available in our software version of our JN0-224 Exam Questions, which is useful for you to get accustomed to the JN0-224 exam atmosphere. Please believe us that our JN0-224 torrent question is the best choice for you.

Juniper JN0-224 Exam Syllabus Topics:

Topic	Details
Topic 1	<ul style="list-style-type: none"> Data Serialization: This domain addresses YAML and JSON formats used for structured data representation and exchange in network automation workflows.
Topic 2	<ul style="list-style-type: none"> Junos Automation Stack and DevOps Concepts: This domain covers fundamental automation tools, frameworks, APIs, and DevOps culture applicable to Junos platform operations and network management.
Topic 3	<ul style="list-style-type: none"> NETCONF XML API: This domain focuses on XML syntax, XPath expressions, NETCONF protocol, and XML API functionality for programmatic device configuration and communication.
Topic 4	<ul style="list-style-type: none"> Rest API: This domain covers Junos REST API implementation, REST API Explorer tool, and cURL usage for HTTP-based device management and configuration.
Topic 5	<ul style="list-style-type: none"> Python PyEZ: This domain examines Python programming with PyEZ library for Junos automation, including JSNAPy, Jinja2 templates, RPC calls, exception handling, and device configuration management.

>> JN0-224 Examcollection Questions Answers <<

Reliable JN0-224 Test Materials, JN0-224 Exam Study Solutions

These questions will familiarize you with the JN0-224 exam format and the content that will be covered in the actual test. You will

not get a passing score if you rely on outdated practice questions. TrainingQuiz has assembled a brief yet concise study material that will aid you in acing the Automation and DevOps, Associate (JNCIA-DevOps) (JN0-224) exam on the first attempt. This prep material has been compiled under the expert guidance of 90,000 experienced Juniper professionals from around the globe.

Juniper Automation and DevOps, Associate (JNCIA-DevOps) Sample Questions (Q34-Q39):

NEW QUESTION # 34

Which two statements about NETCONF are true? (Choose two.)

- A. It uses the messages layer to lock the configuration of a Junos device.
- B. It uses the messages layer to commit the configuration of a Junos device.
- C. It uses the operations layer to commit the configuration of a Junos device.
- D. It uses the operations layer to lock the configuration of a Junos device.

Answer: C,D

Explanation:

NETCONF (Network Configuration Protocol) operates through different layers, with the operations layer being particularly important for managing configurations:

Operations Layer (A & D): This layer is responsible for actions like locking and committing the configuration on a Junos device. The lock operation prevents other sessions from modifying the configuration, and the commit operation applies the configuration changes to the device.

Options B and C are incorrect because the messages layer handles the communication aspects, such as exchanging data between the client and server, not performing configuration operations like locking and committing.

Reference:

IETF RFC 6241 (NETCONF): Describes the protocol layers and their functions, with a focus on the operations layer.

Juniper Networks NETCONF Documentation: Provides insights into how NETCONF operations are managed in Junos

NEW QUESTION # 35

You are asked to use the REST API to retrieve interface configuration information from your Junos device. You decide to use a cURL HTTP GET command to retrieve this information.

In this scenario, which two statements are correct? (Choose two.)

- A. You must include the authentication information with each request.
- B. You can retrieve this data in HTML or JSON formats.
- C. You can retrieve this data in XML or JSON formats.
- D. You must have SSH enabled on the Junos device.

Answer: A,C

Explanation:

When using the REST API to retrieve interface configuration information from a Junos device:

Data Formats (C): The information can be retrieved in XML or JSON formats. These are the two standard data formats supported by the Junos REST API for representing configuration and operational data.

Authentication (D): For each HTTP request, especially when using tools like cURL, authentication information must be included. This is typically done using basic authentication (username and password) or an authentication token.

Option A is incorrect because HTML is not a supported format for REST API data retrieval in Junos, and Option B is incorrect because SSH is not required for REST API requests; the REST API typically uses HTTP/HTTPS.

Reference:

Junos REST API Documentation: Details the data formats (XML, JSON) supported by the Junos REST API and the need for authentication.

cURL Usage with REST API: Provides examples of how to use cURL with Junos REST API, including the necessity of providing authentication.

NEW QUESTION # 36

Which two standard logical operators does XPath support? (Choose two.)

- A. NOT
- B. AND
- C. IOR
- D. MAMD

Answer: A,B

Explanation:

XPath is a query language used for selecting nodes from an XML document. It supports various logical operators that can be used to create complex queries. The two standard logical operators supported by XPath are:

NOT: This operator negates a condition, returning true if the condition is false, and vice versa.

AND: This operator is used to combine two conditions, and it returns true only if both conditions are true.

Option A (IOR) and Option D (MAMD) are not standard XPath operators.

Supporting Reference:

XPath Documentation: The W3C XPath specification lists the standard operators supported in XPath, including AND and NOT.

NEW QUESTION # 37

Exhibit.

Referring to the exhibit, which statement about REST is correct?

- A. The device is configured to allow only two simultaneous REST connections.
- B. The device is configured to allow connections from the REST API Explorer
- C. The device is configured to allow HTTPS connections on port 3443.
- D. The device is configured to allow HTTP connections on port 3030.

Answer: C

NEW QUESTION # 38

Given the following Python script:

```
a = [1,2,3,4,5,6,7,8,9]
```

```
print(a[0])
```

What is the output of this print command?

- A. 0
- B. 1
- C. 2
- D. 3

Answer: C

Explanation:

In Python, lists are zero-indexed, meaning the first element of the list is at index 0. The given script is:

```
pythona = [1, 2, 3, 4, 5, 6, 7, 8, 9]
```

```
print(a[0])
```

a[0] refers to the first element in the list a, which is 1.

So, the output of the print(a[0]) command is 1.

Option A is correct because Python indexing starts at 0, making the first element of the list at index 0.

Reference:

Python Official Documentation: Covers list indexing and operations.

Python Programming Tutorials: Provide examples of list indexing.

NEW QUESTION # 39

.....

We have 24/7 Service Online Support services, and provide professional staff Remote Assistance at any time if you have questions on our JN0-224 exam braindumps. Besides, if you need an invoice of our JN0-224 practice materials please specify the invoice information and send us an email. Online customer service and mail Service is waiting for you all the time. And you can download the

