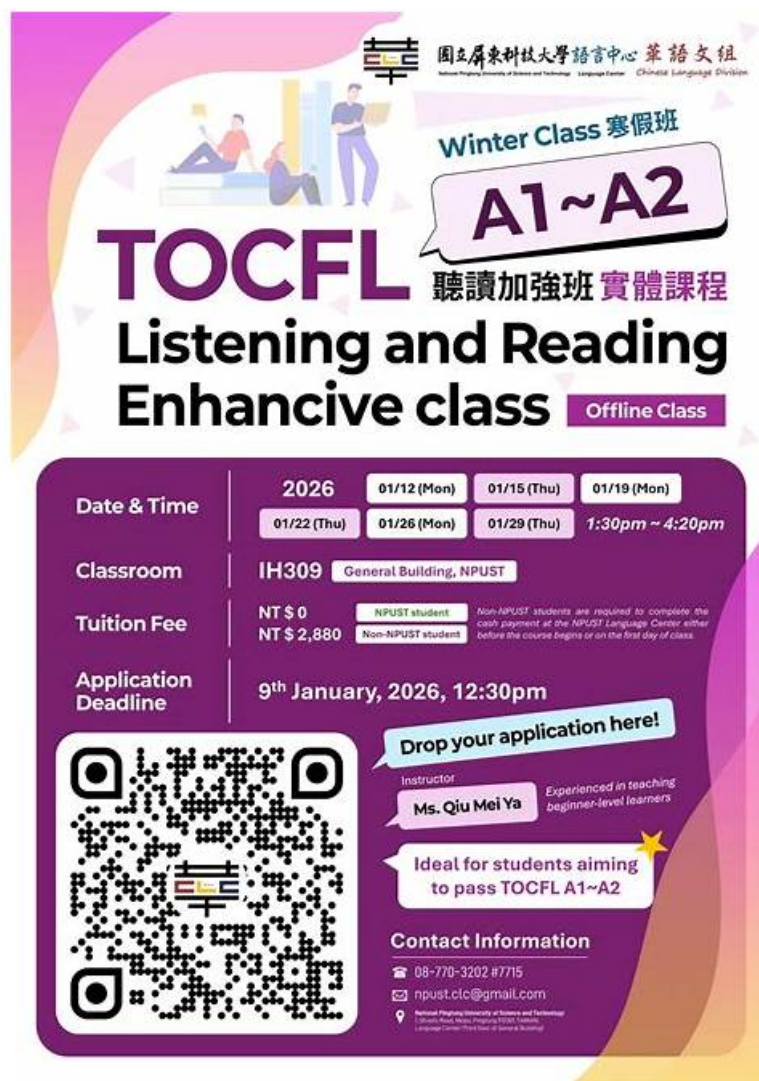


350-501 Exam Topic | 350-501 Valid Dumps



國立屏東科技大學語言中心 華語文組
National Pingtung University of Science and Technology Language Center Chinese Language Division

Winter Class 寒假班
A1~A2

TOCFL 聽讀加強班 實體課程
Listening and Reading Enhance class Offline Class

Date & Time	2026	01/12 (Mon)	01/15 (Thu)	01/19 (Mon)
	01/22 (Thu)	01/26 (Mon)	01/29 (Thu)	1:30pm ~ 4:20pm

Classroom IH309 General Building, NPUST

Tuition Fee
NT \$ 0 NPUST student
NT \$ 2,880 Non-NPUST student
Non-NPUST students are required to complete the cash payment at the NPUST Language Center either before the course begins or on the first day of class.

Application Deadline 9th January, 2026, 12:30pm

Drop your application here!

Instructor
Ms. Qiu Mei Ya Experienced in teaching beginner-level learners

Ideal for students aiming to pass TOCFL A1~A2

Contact Information
☎ 08-770-3202 #7715
✉ npust.clc@gmail.com
National Pingtung University of Science and Technology
1-Kuang-Fu Road, Hsinchu Pingtung 92001 Taiwan
Language Center (1st floor, 1st General Building)

DOWNLOAD the newest Pass4SureQuiz 350-501 PDF dumps from Cloud Storage for free: <https://drive.google.com/open?id=1NPKpp1ZZ-YbykvEeHcQCYxrs-01dzvW->

Pass4SureQuiz is the leading position in this field and famous for high pass rate. If you are headache about your qualification exams, our 350-501 learning guide materials will be a great savior for you. Now it is your opportunity that we provide the best valid and professional 350-501 study guide materials which have 100% pass rate. If you really want to Clear 350-501 Exam and gain success one time, choosing us will be the wise thing for you. If you hesitate about us please pay attention on below about our satisfying service and high-quality 350-501 guide torrent.

Moreover, we offer free Cisco 350-501 Exam Questions updates if the 350-501 actual test content changes within 12 months of your buying. Our 350-501 guide questions have helped many people obtain an international certificate. In this industry, our products are in a leading position in all aspects.

>> 350-501 Exam Topic <<

350-501 Valid Dumps & Test 350-501 Duration

The Implementing and Operating Cisco Service Provider Network Core Technologies 350-501 certification is a unique way to level up your knowledge and skills. With the Implementing and Operating Cisco Service Provider Network Core Technologies 350-501 credential, you become eligible to get high-paying jobs in the constantly advancing tech sector. Success in the Cisco 350-501 examination also boosts your skills to land promotions within your current organization. Are you looking for a simple and quick way

to crack the Cisco 350-501 examination? If you are, then rely on 350-501 Exam Dumps.

Cisco 350-501 Exam is intended for individuals who are interested in pursuing a career in service provider networking. 350-501 exam covers a range of topics, including network automation, virtualization, security, and quality of service. Successful completion of 350-501 exam will demonstrate an individual's expertise in these areas and their ability to manage and operate service provider networks.

The Implementing and Operating Cisco Service Provider Network Core Technologies certification is an essential certification for individuals whose goal is to work in the network industry as a network administrator or service provider. Obtaining this certification signifies that a candidate has a complete understanding of the core network technologies used in the service provider domain and has the skills to manage and operate these technologies efficiently.

Cisco Implementing and Operating Cisco Service Provider Network Core Technologies Sample Questions (Q456-Q461):

NEW QUESTION # 456

Refer to the exhibit.



A network operator must configure CSR1 interfaces GigabitEthernet2 and GigabitEthernet3 to rewrite VLAN tags 12 and 21 for traffic between R1 and R2 respectively. Which configurator accomplishes this task?

A)

```
#CSR1
interface GigabitEthernet2
no ip address
service instance 21 ethernet
encapsulation dot1q 21
rewrite ingress tag translate 1-to-1 dot1q 12
rewrite egress tag translate 1-to-1 dot1q 21
bridge-domain 10
!
interface GigabitEthernet3
no ip address
service instance 12 ethernet
encapsulation dot1q 12
rewrite ingress tag translate 1-to-1 dot1q 21
rewrite egress tag translate 1-to-1 dot1q 12
bridge-domain 10
```

B)

```
#CSR1

interface GigabitEthernet2
no ip address
service instance 12 ethernet
encapsulation dot1q 12
rewrite ingress tag translate 1-to-1 dot1q 21
rewrite egress tag translate 1-to-1 dot1q 12
bridge-domain 10
!
interface GigabitEthernet3
no ip address
service instance 21 ethernet
encapsulation dot1q 21
rewrite ingress tag translate 1-to-1 dot1q 12
rewrite egress tag translate 1-to-1 dot1q 21
bridge-domain 10
```

C)

```
#CSR1
interface GigabitEthernet2
!
interface GigabitEthernet3
no ip address
service instance 21 ethernet
encapsulation dot1q 21
rewrite ingress tag translate 1-to-1 dot1q 12
rewrite egress tag translate 1-to-1 dot1q 21
bridge-domain 21
```

D)

```
#CSR1

interface GigabitEthernet2
no ip address
service instance 12 ethernet
encapsulation dot1q 12
rewrite ingress tag translate 1-to-1 dot1q 21
rewrite egress tag translate 1-to-1 dot1q 12
!
interface GigabitEthernet3
no ip address
service instance 21 ethernet
encapsulation dot1q 21
rewrite ingress tag translate 1-to-1 dot1q 12
rewrite egress tag translate 1-to-1 dot1q 21
```

- A. Option A
- B. Option B
- C. Option D
- D. Option C

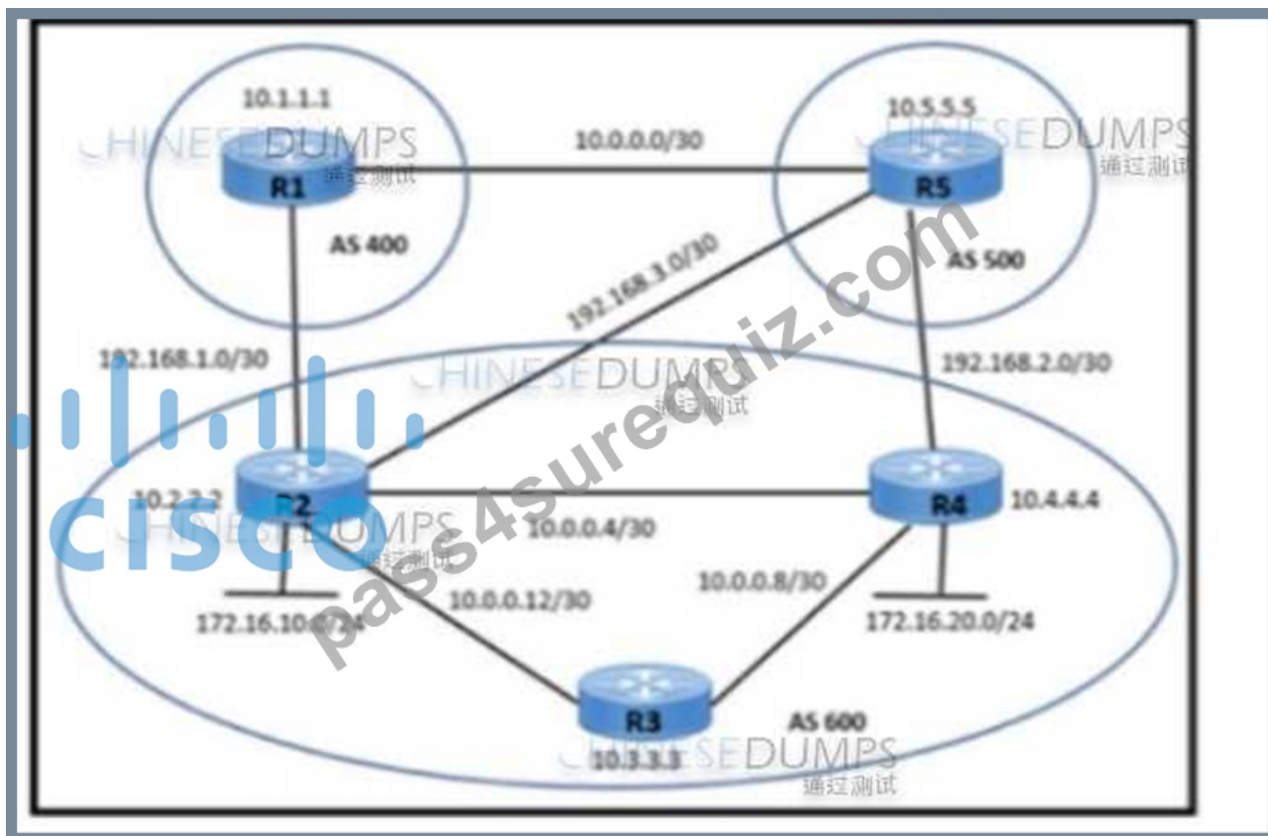
Answer: B

NEW QUESTION # 457

Refer to the exhibit. A network engineer is implementing iBGP and eBGP between AS 600 and AS 500 with these requirements:

- R2 must establish eBGP peering on 192.168.3.0/30 with R5 for sending unicast and multicast traffic
- R2 must wait for 30 seconds before sending BGP updates to R5 for multicast traffic.

Which action must be taken on R2 to meet the requirements?

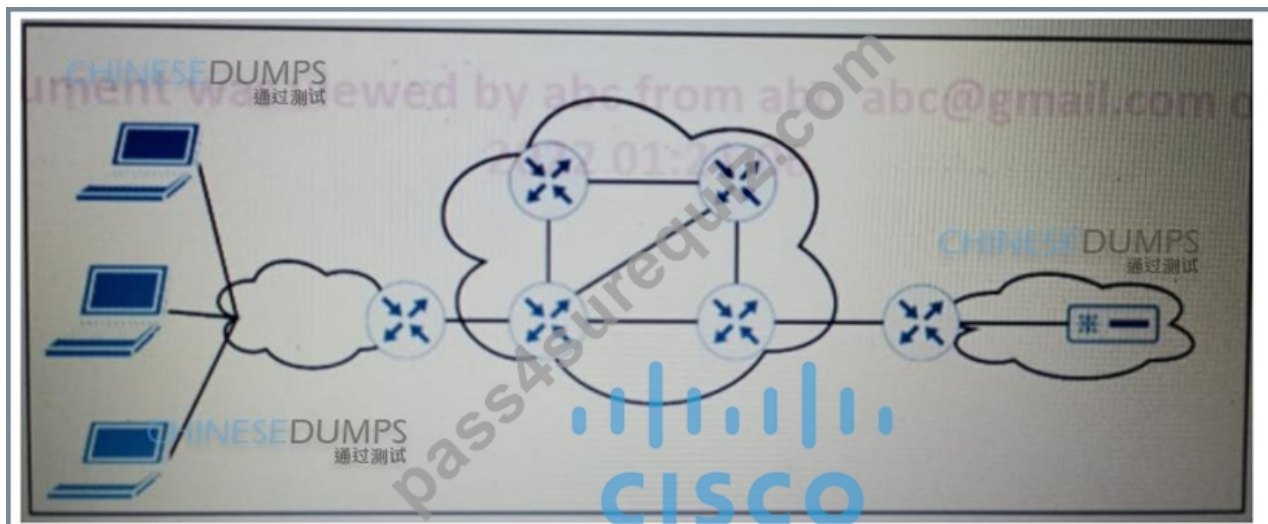


- A. Configure advertisement-interval 30 In address-family ipv4 unicast
- B. Apply timers bgp 30 in address-family ipv4 unicast
- C. Apply timers bgp 30 in address-family ipv4 multicast.
- D. Configure advertisement-Interval 30 in address-family Ipv4 multicast

Answer: D

NEW QUESTION # 458

Refer to the exhibit.



Refer to the exhibit. ISP A provides VPLS services and DDoS protection to Company XYZ to connect their branches across the North America and Europe regions. The uplink from the data center to the ISP is Mbps. The company XYZ security team asked the ISP to redirect ICMP requests which are currently going to the web server to a new local security appliance which configuration must an ISPP engineer apply to router R2 to redirect the ICMP traffic?

```
class-map type traffic match-all B_210.10.65.1
match destination-address ipv4 210.10.65.1
match protocol 3
match ipv4 icmp-type 5
```

• A.

```
class-map type traffic match-all B_210.10.65.1
match destination-address ipv4 210.10.65.1
match protocol 1
match ipv4 icmp-type 8
```

• B.

• C.

```
class-map type traffic match-all B_210.10.65.1
match destination-address ipv4 210.10.65.1
match protocol 6
match ipv4 icmp-type 9
```

• D.

```
class-map type traffic match-all B_210.10.65.1
match destination-address ipv4 210.10.65.1
match protocol 7
match ipv4 icmp-type 3
```

Answer: C

Explanation:

The configuration should include a class-map that matches the ICMP traffic destined for the web server's IP address. This can be achieved by using an access control list (ACL) within the class-map to match the ICMP traffic. Then, a policy-map should be applied that sets the next hop to the IP address of the new security appliance. This policy-map is then applied to the appropriate interface on router R2 using the service-policy command.

NEW QUESTION # 459

Refer to the exhibit. Which configuration must be implemented on router R8 so that it will establish OSPF adjacency with R5?

```
R5#show run | s router ospf
```

```
router ospf 1
```

```
router-id 172.16.0.5
```

```
network 192.168.0.0 0.0.63.255 area 0
```

```
R5#show run int GigabitEthernet1.58
```

```
Building configuration...
```

```
Current configuration: 245 bytes
```

```
interface GigabitEthernet1.58
```

```
description LINK TO R8 Gi1.58
```

```
encapsulation dot1Q 58
```

```
ip address 192.168.58.5 255.255.255.0
```

```
ip mtu 1600
```

```
ip ospf network point-to-point
```

```
ip ospf 1 area 0.0.0.2
```

```
end
```

```
router ospf 1
```

- A. network 192.168.58.0 0.0.0.255 area 0.0.0.2
interface GigabitEthernet 1.58

- ```
ip ospf network point-to-point
router ospf 1
```
- B. network 192.168.58.0 0.0.0.255 area 0.0.0.2  
interface GigabitEthernet 1.58  
ip mtu 1600  
ip ospf network point-to-point  
ip ospf 1 area 0
  - C. network 192.168.58.0 0.0.0.255 area 0.0.0.2  
interface GigabitEthernet 1.58  
ip mtu 1600  
ip ospf network point-to-multipoint  
router ospf 1
  - D. network 192.168.58.0 0.0.0.255 area 2  
interface GigabitEthernet 1.58  
ip mtu 1600  
router ospf 1

**Answer: C**

#### NEW QUESTION # 460

What do Ansible and Salt Stack have in common?

- A. They both can be designed with more than one master server
- B. They both use YAML configuration language
- C. They both use DSL configuration language
- D. They both have agents running on the client machine

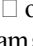
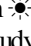
**Answer: B**

#### NEW QUESTION # 461

.....

With the simulation test, all of our customers will get accustomed to the 350-501 exam easily, and get rid of bad habits, which may influence your performance in the real 350-501 exam. In addition, the mode of 350-501 learning guide questions and answers is the most effective for you to remember the key points. During your practice process, the 350-501 test questions would be absorbed, which is time-saving and high-efficient. Concentrated all our energies on the study 350-501 learning guide we never change the goal of helping candidates pass the exam. Our 350-501 test questions' quality is guaranteed by our experts' hard work. So what are you waiting for? Just choose our 350-501 exam materials, and you won't be regret.

**350-501 Valid Dumps:** <https://www.pass4surequiz.com/350-501-exam-quiz.html>

- 350-501 Exam Topic - Pass Guaranteed Quiz Cisco First-grade 350-501 Valid Dumps ☐ The page for free download of ☐ 350-501 ☐ on  [www.vce4dumps.com](http://www.vce4dumps.com) ☐  will open immediately ☐ 350-501 Latest Exam Questions
- 350-501 exam study material - 350-501 exam guide files - 350-501 latest pdf vce ☐ Copy URL ➡ [www.pdfvce.com](http://www.pdfvce.com) ☐ open and search for ▶ 350-501 ◀ to download for free ☐ 350-501 Trustworthy Exam Torrent
- 350-501 Learning Materials: Implementing and Operating Cisco Service Provider Network Core Technologies- 350-501 Exam braindumps ☐ Download { 350-501 } for free by simply entering ➡ [www.practicevce.com](http://www.practicevce.com) ☐ website ☐ Valid 350-501 Test Online
- Ensured Exam Success with Cisco 350-501 Exam Questions ☐ Search for ☐ 350-501 ☐ and easily obtain a free download on 《 [www.pdfvce.com](http://www.pdfvce.com) 》 ☐ Valid 350-501 Test Pdf
- New Exam 350-501 Braindumps ☐ Download 350-501 Demo ☐ Reliable 350-501 Cram Materials ☐ Simply search for ➡ 350-501 ☐ for free download on ( [www.pass4test.com](http://www.pass4test.com) ) ☐ 350-501 Real Braindumps
- 350-501 Exam Topic - Pass Guaranteed Quiz Cisco First-grade 350-501 Valid Dumps ☐ Open 「 [www.pdfvce.com](http://www.pdfvce.com) 」 and search for ▶ 350-501 ◀ to download exam materials for free ☐ Download 350-501 Demo
- 350-501 Valid Guide Files ☐ 350-501 Exam Tips ☐ Free 350-501 Test Questions ☐ Download “ 350-501 ” for free by simply searching on ➡ [www.torrentvce.com](http://www.torrentvce.com) ☐ ☐ ☐ Free 350-501 Test Questions
- High Pass-Rate 350-501 Exam Topic - Accurate 350-501 Valid Dumps: Implementing and Operating Cisco Service Provider Network Core Technologies ☐ Search for ➡ 350-501 ☐ and obtain a free download on { [www.pdfvce.com](http://www.pdfvce.com) } ☐ Exam 350-501 Dump

- P.S. Free & New 350-501 dumps are available on Google Drive shared by Pass4SureQuiz: <https://drive.google.com/open?id=1NPKpp1ZZ-YbykvEeHcQCYxrs-01dzvW->

P.S. Free & New 350-501 dumps are available on Google Drive shared by Pass4SureQuiz: <https://drive.google.com/open?id=1NPKpp1ZZ-YbykvEeHcQCYxrs-01dzvW->