

# C\_S43\_2601 dumps torrent & C\_S43\_2601 pdf questions & C\_S43\_2601 study guide

## C\_S43\_2022

SAP Certified Application  
Associate - SAP S/4HANA  
Asset Management

You do not worry about that you get false information of C\_S43\_2601 guide materials. According to personal preference and budget choice, choosing the right goods to join the shopping cart. The 3 formats of C\_S43\_2601 study materials are PDF, Software/PC, and APP/Online. Each format has distinct strength and shortcomings. We have printable PDF format prepared by experts that you can study our C\_S43\_2601 training engine anywhere and anytime as long as you have access to download. We also have installable software application which is equipped with C\_S43\_2601 simulated real exam environment.

Our C\_S43\_2601 exam dumps are compiled by our veteran professionals who have been doing research in this field for years. There is no question to doubt that no body can know better than them. The content and displays of the C\_S43\_2601 pass guide Which they have tailor-designed are absolutely more superior than the other providers'. Besides, they update our C\_S43\_2601 Real Exam every day to make sure that our customer can receive the latest C\_S43\_2601 preparation brain dumps.

>> Regualer C\_S43\_2601 Update <<

### Useful Regualer C\_S43\_2601 Update – Pass C\_S43\_2601 First Attempt

It is very necessary for a lot of people to attach high importance to the C\_S43\_2601 exam. It is also known to us that passing the exam is not an easy thing for many people, so a good study method is very important for a lot of people, in addition, a suitable study tool is equally important, because the good and suitable C\_S43\_2601 reference guide can help people pass the exam in a relaxed state. We are glad to introduce the C\_S43\_2601 certification study guide materials from our company to you. We believe our C\_S43\_2601 study materials will be very useful and helpful for you to pass the C\_S43\_2601 exam.

### SAP Certified Implementation Consultant - SAP S/4HANA Cloud Private Edition, Asset Management (C\_S43\_2601) Sample Questions (Q10-Q15):

#### NEW QUESTION # 10

Check Inspection Lot and record Inspection Results

The project team evaluates during the implementation project the checking of Inspection Lots Checklist processing including result recording. The following features need to be checked:

- \* Display the automatically created Inspection Lot
- \* Record Inspection Results
- \* Display the automatically created Inspection Lot for the previously created Maintenance Order including Checklist. The Inspection Lot comprises the following data:

Field	Value
Material	T-PM1100
Plant	1010
Inspection Lot Origin	89 Miscellaneous
Group	CL-DE-00
Group Counter	1

\* Record Inspection Results for the previously created Inspection Lot so that the Usage Decision is automatically set to Can be used

#### Answer:

Explanation:

See the Explanation for complete Solution of this Task.

Explanation:

Task 13 Overview

This task focuses on the quality management (QM) integration with maintenance. You will verify the inspection lot that was automatically triggered by your maintenance order and then record the results to confirm the technical object is fit for use.

Step 1: Display the Automatically Created Inspection Lot

Before recording results, you must verify that the system generated the correct inspection lot for your maintenance order.

\* Access the Transaction : Enter QA03 (Display Inspection Lot) in the command field and press Enter .

\* Locate the Lot : Search for the inspection lot associated with the maintenance order you created in Task 12.

\* Verify the Following Data :

\* Material : T-PM1100

\* Plant : 1010

\* Inspection Lot Origin : 89 (Miscellaneous)

\* Group : CL-DE-00

\* Group Counter : 1

Explanation : The inspection lot is the central record for quality testing. Seeing these specific values (Group CL-DE-00) confirms that the classification you set up in Task 11 correctly triggered the intended inspection plan.

Step 2: Record Inspection Results

This is the process of entering the actual findings from the checklist inspection.

\* Access the Transaction : You can navigate directly from the Inspection Lot in QA03 or use transaction QE51N (Results Recording Selection).

\* Select the Lot : Enter your inspection lot number and click Execute .

\* Record Results :

\* Enter the inspection values for each characteristic listed in the checklist.

\* Ensure the values you enter are within the "Acceptable" range or marked as "Pass".

\* Automatic Usage Decision : Record the results such that the Usage Decision (UD) is automatically set to "Can be used" .

\* Save : Click the Save (floppy disk) icon.

Explanation : By recording positive results, you satisfy the quality requirements for the maintenance task.

The automatic transition to "Can be used" status tells the system the pump has passed inspection and the maintenance order can proceed toward completion.

#### NEW QUESTION # 11

In the following assessment you will slip into the role of a consultant implementing SAP S/4HANA Asset Management OnPrem/Private Cloud for Machine Manufacturing Inc. . You need to fulfill various system tasks to setup certain business processes and test them.

Note:


In the task descriptions is no information provided if and/or how Asset Management specific customizing settings need to be adapted. This is an implicit part of the exam

Note:

There is no information provided which UI to use when creating the data in the system e.g. SAP GUI, SAP Fiori Launchpad. This is an implicit part of the exam.

Your performance in each exercise will be evaluated to produce an overall score that determines a pass or fail for the exam. Please read every exercise carefully and enter any data exactly as requested without alteration. Some input data is provided in tables or in the task descriptions, however your input data is not limited to these parameters.

Use the following Logon information for all tasks:

System	User Name / ID	Password
T41 400	S43900-## 	Welcome1

Caution:

Please make sure you are always using your assigned group number (denoted as ## in the following) .

Your results will not be recorded if you are not using your own group number.

For example, if your group number is 10 i.e. (## = 10), your user will be S43900-10.

To find your group number: Click the Access button on the practice system details page. You will find your group number displayed beneath the "Get started" header in the pop-up window. Alternatively, in your Windows Terminal Server, choose the Windows button in the lower left corner. The Start Menu opens. In its upper left corner, choose the Expand icon (three white lines). Find your user name next to the user icon on the left side of the menu - the last two digits of the user name are your group number ##.

Note:

To access your backend system in the Windows Terminal Server, open the SAP Logon application and start the T41 system (Client 400 ). You can access the SAP Fiori Launchpad from the SAP Menu in T41. Always work with user S43900-## in order to have the required roles in place for your tasks.

Caution:

To keep the system running smoothly and avoid unnecessary costs, please follow the assigned exercises carefully when using the SAP Landscape. Avoid going beyond the exercise scope and stay within your allocated resources to help maintain a stable and efficient environment for everyone and to ensure your data is evaluated properly.

Note:

In the following, you will be asked to create new transaction data, among others. If you are asked to create one specific new transaction data object, and - for whatever reason - you create more than one of that kind, SAP will evaluate your newest version only. For example: if you are asked to create a Maintenance Order of a specific Order Type in an exercise and you create three different Maintenance Orders of a specific Order Type, only your order with the highest order number will be evaluated.

### Answer:

Explanation:

See the Explanation for complete Solution of this Task.

Explanation:

Task Objective

In this assessment, you assume the role of a consultant implementing SAP S/4HANA Asset Management for Machine Manufacturing Inc. . Your goal is to set up and test specific business processes through various system tasks.

Step 1: Identify Your Assigned Group Number (##)

This is the most critical step, as your results will only be recorded if you use your specific group number, denoted as ## in all instructions.

How to find your number:

\* Method A: Click the Access button on the practice system details page; your group number is displayed beneath the "Get started" header.

\* Method B: In the Windows Terminal Server, click the Windows button (Start Menu), select the Expand icon (three white lines), and find your user name next to the user icon. The last two digits of that name are your group number.

Step 2: Access the System

You must use the specific credentials provided to ensure you have the required roles for the assessment.

Logon Credentials:

\* System : T41

\* Client : 400

\* User Name/ID : S43900-## (e.g., if your group number is 10, use S43900-10)

\* Password : Welcome1

Connection Methods:

\* SAP GUI : Open the SAP Logon application in the Windows Terminal Server and start the T41 system (Client 400).

\* SAP Fiori Launchpad : This can be accessed directly from the SAP Menu within the T41 system.

Step 3: Understand Implicit Exam Rules

The assessment does not provide exhaustive instructions; certain technical decisions are considered part of the exam.

\* Customizing : You must determine if and how specific Asset Management customizing settings need to be adapted.

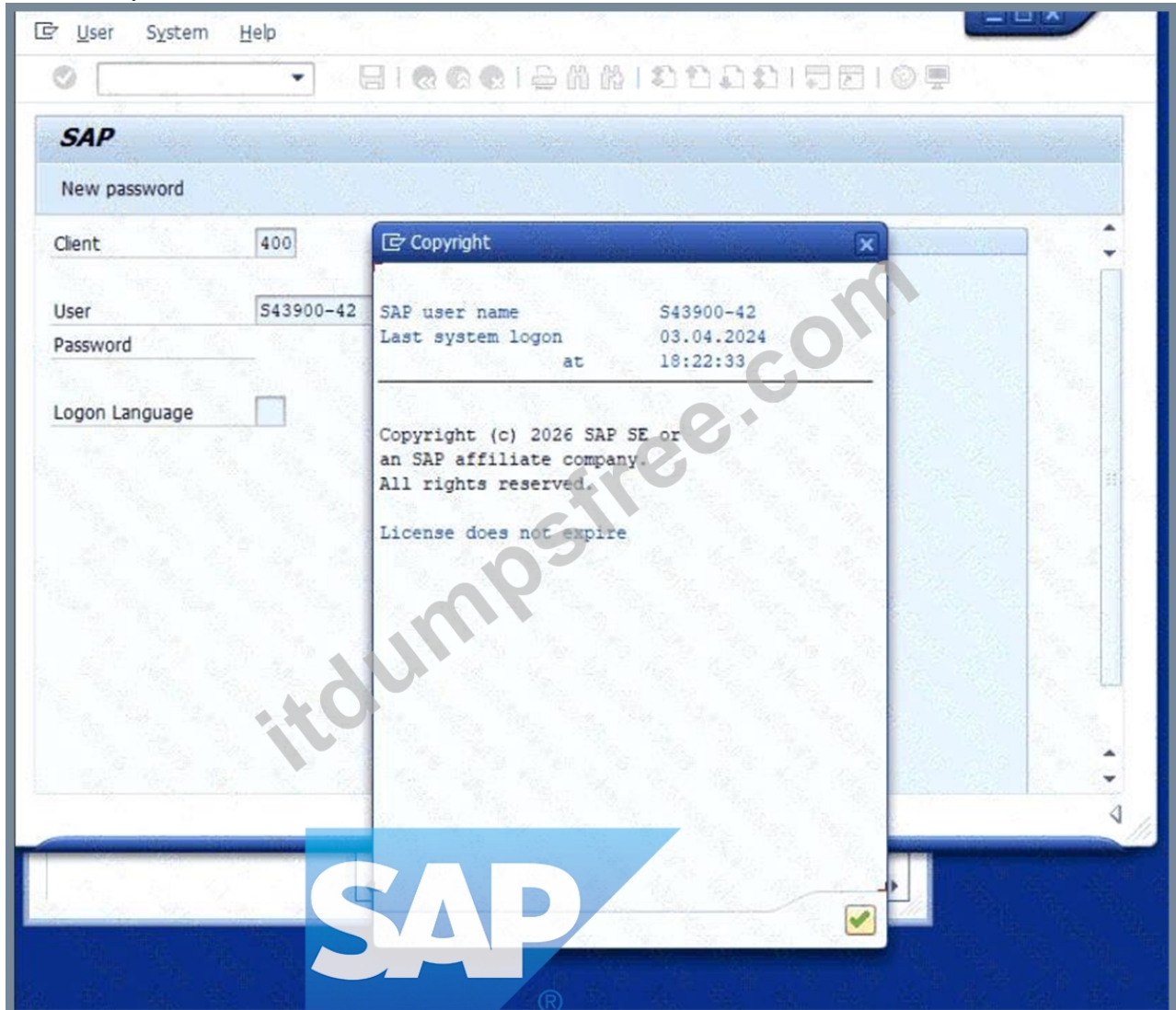
\* User Interface : You are free to choose between the SAP GUI or SAP Fiori Launchpad to create data, as the instructions do not specify which to use.

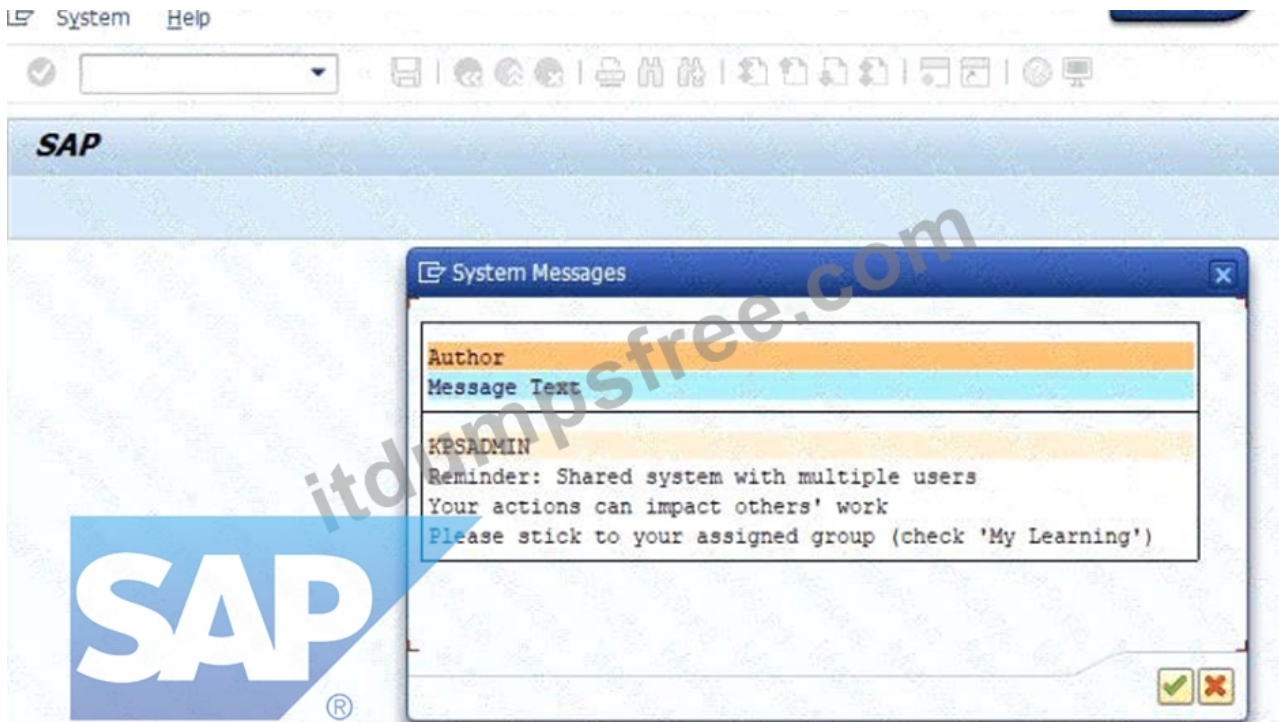
\* Data Accuracy : Enter all data exactly as requested in the tables or descriptions without any alterations.

Step 4: Evaluation of Transaction Data

If you are asked to create a specific transaction object (like a Maintenance Order) and you create multiple versions, the system will only evaluate the newest version (the one with the highest identifying number).

Caution : To ensure your data is evaluated properly and to maintain system stability, stay strictly within the scope of the assigned exercises and your allocated resources.





**NEW QUESTION # 12**

Use Phase-Based Maintenance Processing

The project team evaluates during the implementation project Phase-Based Maintenance Processing in SAP S/4HANA Asset Management. The following features need to be checked:

- \* Initiate and screen a Maintenance Notification
- \* Plan Maintenance Order and send it for approval
- \* Create a Maintenance Notification using an already available notification type which is suitable for phase-based maintenance and save it.

Use the following data:

Field	Value
Technical Object	T-PB##
Current Location	Production Line 1
Detection Method	Continuous Condition Monitoring
Operational Effect	Production restricted
Description	Defective pump (phase-based)

\* Screen and accept the just created Maintenance Notification.

\* Create an Order (Phase-based) for your accepted notification and submit it for approval.

Use the following data:

Field	Value
Technical Object	T-PB##
Operation 0010 - Description	Repair damage
Operation 0010 - Work	2 h

**Answer:**

Explanation:

See the Explanation for complete Solution of this Task.

Explanation:

Task 10 Overview

This task evaluates your ability to manage the newer, phase-led maintenance workflow in SAP S/4HANA.

Unlike the traditional "emergency" repair you did earlier, this process includes formal screening and approval steps Step 1: Create a Phase-Based Maintenance Notification In this step, you initiate the request.

- \* Access the Transaction : Use transaction IW21 or the Fiori app Create Maintenance Request .
- \* Select Notification Type : Use a type configured for phase-based maintenance (typically Y1 - Maintenance Request ).
- \* Enter the Following Data :
- \* Technical Object : T-PB48
- \* Description : Defective pump (phase-based)
- \* Current Location : Production Line 1
- \* Detection Method : Continuous Condition Monitoring
- \* Operational Effect : Production restricted
- \* Save : Note the notification number generated.

Explanation : This step "initiates" the maintenance process. In phase-based maintenance, the notification starts in the Initiation phase, where it must be reviewed before any work is planned.

Step 2: Screen and Accept the Notification

As a "Maintenance Coordinator," you must now review the request.

- \* Access the Fiori App : Open Screen Maintenance Requests .
- \* Locate Your Notification : Find the notification you just created for T-PB48.
- \* Perform Screening :
- \* Review the details to ensure they are complete.
- \* Click Accept to move it to the next phase.

Explanation : "Screening" is a quality gate. It ensures that the maintenance team only spends time planning valid, well-described issues. Once accepted, the notification moves from the Initiation phase to the Screening phase and finally becomes available for planning

Step 3: Create and Plan the Phase-Based Order

Now you will create the formal work order for the accepted request.

- \* Create Order : From within the accepted notification, or using the Manage Maintenance Backlog app, choose to Create Order .
- \* Enter Planning Data :
- \* Technical Object : T-PB48
- \* Operation 0010 Description : Repair damage
- \* Operation 0010 Work : 2 h
- \* Submit for Approval : Look for the Submit for Approval button at the top of the order screen.

Explanation : This step moves the order into the Planning phase. By submitting it for approval, you are requesting the budget and resources to perform the work. The order status will change to indicate it is "Waiting for Approval"

### NEW QUESTION # 13

Task 11: Classify a piece of Equipment

The project team evaluates during the implementation project the classification of Technical Objects in order to use Checklists in SAP S/4HANA Asset Management. The following features need to be checked:

- \* Assign a class to a Technical Object
- \* Assign characteristic values to a class
- \* Assign class EQ11 value to Technical Object T-PA## .
- \* Assign a characteristic value, so that Inspection Plan Q / CL-DE-00 / 1 is automatically found during the checklist process

#### Answer:

Explanation:

See the Explanation for complete Solution of this Task.

Explanation:

Task 11 Overview

This task involves classifying a piece of equipment so it can be used in the Checklist process . By assigning a specific class and characteristic values, you enable the system to automatically find the correct inspection plan when a maintenance order is created.

Step 1: Access the Equipment Master Record

To classify the equipment, you must first open its master record in "Change" mode.

- \* Transaction Code : Enter IE02 (Change Equipment) in the command field and press Enter .
- \* Equipment : Enter T-PA48 .
- \* Action : Press Enter to open the record.

Step 2: Assign the Class to the Equipment

Now you will link the equipment to a class that contains the required technical characteristics.

- \* Navigate : Click the Classification button in the top toolbar (or go to the Classes tab if available).
  - \* Class Assignment :
  - \* Class Type : Ensure this is set to 002 (Equipment Class).
  - \* Class : Enter EQ11 .
  - \* Action : Press Enter . The system will now display the characteristics associated with class EQ11 in the bottom half of the screen.
- Explanation : Assigning a class is like giving the equipment a "category". Class EQ11 is specifically configured in this system to hold the data needed for checklist processing.
- Step 3: Assign Characteristic Values
- This is the critical step that tells the system exactly which inspection plan to use for this specific pump.
- \* Locate the Characteristic : In the values table, look for a characteristic related to "Inspection Plan" or "Checklist Group."
  - \* Enter the Value : Assign the value so that Inspection Plan CL-DE-00 / 1 is automatically found.
  - \* Note: Typically, you will enter CL-DE-00 in the "Inspection Plan Group" field and 1 in the "Group Counter" field.
  - \* Action : Press Enter to validate the values.
- Explanation : Characteristic values are the specific details for this asset. By entering these values, you "tag" the equipment so that whenever it is added to a maintenance order, the system knows to look for the CL-DE-00 checklist automatically.
- Step 4: Save
- \* Action : Click the Save (floppy disk) icon.
  - \* Confirmation : The system should display a message at the bottom saying: "Equipment T-PA48 changed."

#### NEW QUESTION # 14

Create and use a Maintenance Work Center

The project team evaluates during the implementation project the organizational elements in SAP S/4HANA Asset Management.

The following features need to be checked:

- \* Create a Maintenance Work Center
- \* Create a capacity demand for a Maintenance Work Center
- \* Create a new Maintenance Work Center master record ZZ-ME## for maintenance plant 1010 similar to maintenance work center T-ME00 and save it. Use the following information:

Field	Value
Plant	1010
Work Center	ZZ-ME##
Description	Mechanical Maintenance ##
No. Ind. Capacities	5
Capacity	24,00 H

- \* Create a capacity demand of 1 hour for the just created Maintenance Work Center ZZ-ME## by creating a new maintenance order of order type PM01 .

#### Answer:

Explanation:

See the Explanation for complete Solution of this Task.

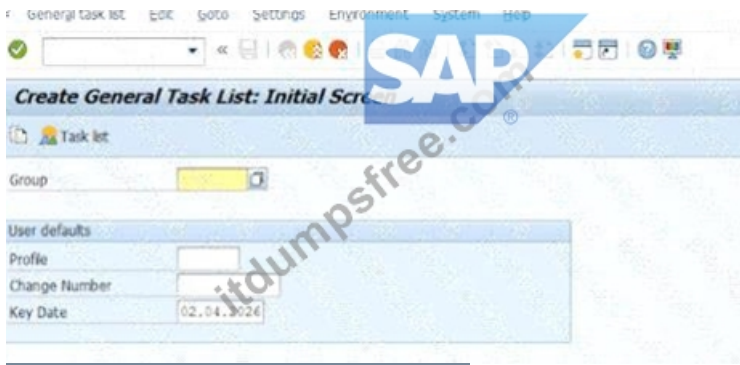
Explanation:

Task 3: Create and Use a Maintenance Work Center

Objective

In Task 3, the requirement was to:

- \* create a new maintenance work center ZZ-ME42 for plant 1010 similar to T-ME00
- \* maintain the required capacity values
- \* create a 1-hour capacity demand for that work center by creating a maintenance order of type PM01



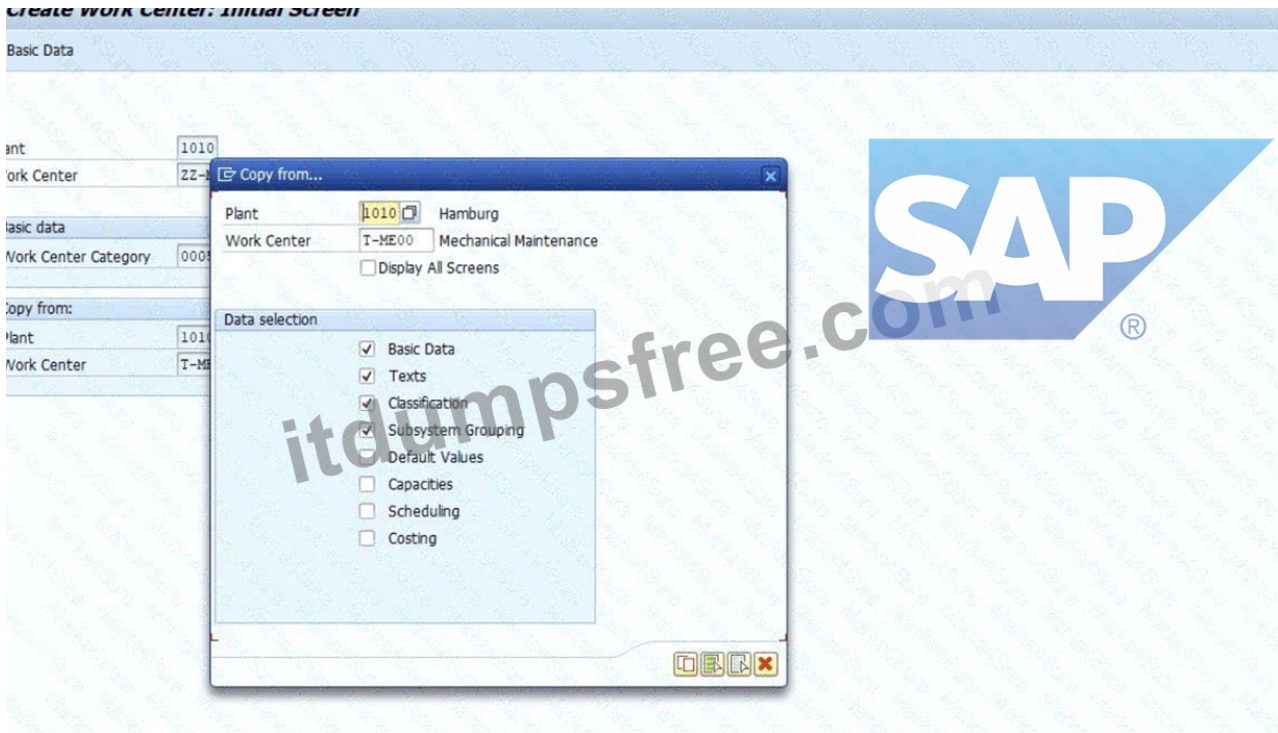
Part 1: Create the Maintenance Work Center

Requirement from task file

The task required the following values for the work center:

- \* Plant = 1010
- \* Work Center = ZZ-ME42
- \* Description = Mechanical Maintenance 42
- \* No. Ind. Capacities = 5
- \* Capacity = 24.00 H

The task also stated that the work center must be created similar to maintenance work center T-ME00 .



Step-by-step procedure

Step 1: Open work center creation

- \* Go to SAP GUI command field
- \* Enter transaction IR01
- \* Press Enter

Transaction IR01 is used to create a new work center. This is the correct starting point for creating the maintenance work center required in Task 3.

Step 2: Enter initial work center data

On the Create Work Center: Initial Screen , enter:

- \* Plant = 1010
- \* Work Center = ZZ-ME42
- \* Work Center Category = 0005
- \* In Copy from :
- \* Plant = 1010
- \* Work Center = T-ME00

Then press Enter .

The task explicitly required the work center to be created for plant 1010 and to be created similar to T-ME00.

Work center category 0005 is the maintenance work center category, so this was the correct category to use for a maintenance work center.

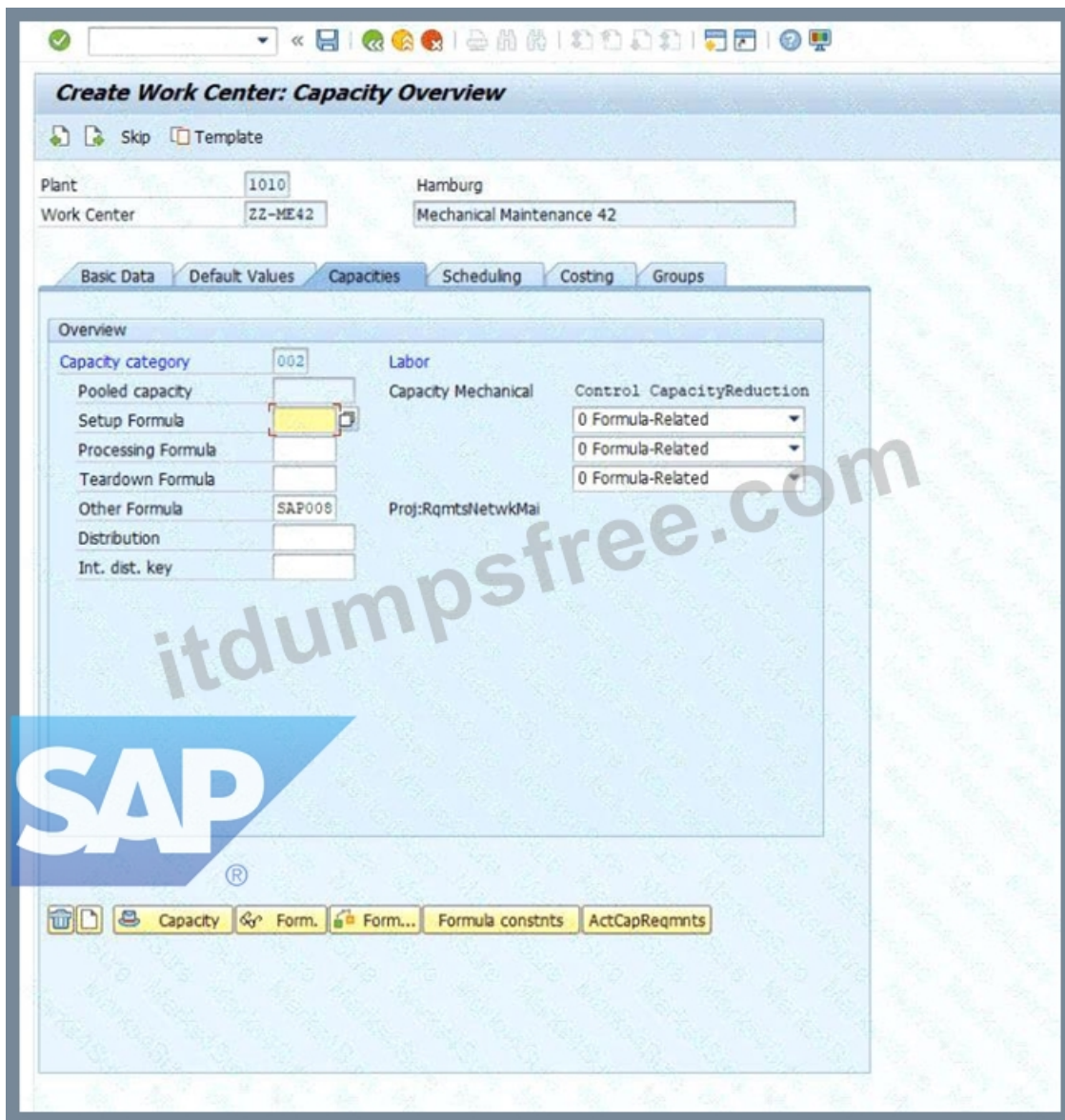
Step 3: Include capacity data during copy

When the Copy from popup appeared:

- \* select Capacities
- \* continue with the green check

This was important because the task required changing capacity-related data:

- \* No. Ind. Capacities = 5
- \* Capacity = 24.00 H Copying the capacity data ensured the new work center inherited the capacity structure from T-ME00 and could then be adjusted correctly.



Step 4: Maintain basic data

On the work center master screen:

- \* change the description to Mechanical Maintenance 42

This matches the exact description required by the task.

Step 5: Maintain capacity values

Go to the Capacities tab, then open the capacity detail screen.

Maintain or verify:

- \* No. Ind. Capacities = 5

- \* Capacity Base Unit = H

- \* Capacity recalculated to 24.00 H

In our system, the Capacity field was system-calculated and not directly editable.

The final valid values were achieved with:

- \* Start Time = 08:00:00

- \* End Time = 17:00:00

- \* Length of breaks = 01:00:00

- \* Capacity Utilization = 60

- \* No. Ind. Capacities = 5

This produced:

- \* Capacity = 24.00 H

The task required 24.00 H capacity, but SAP calculated it automatically based on operating time, utilization, and number of individual capacities.

The resulting calculation was correct and matched the task requirement exactly.

Step 6: Save the work center

- \* Click Save

Later, when trying to create the same work center again, SAP displayed the system message:

\* "Work center ZZ-ME42 in plant 1010 already exists"

Explanation / Verification:

This system message confirmed that the work center had already been created successfully.

Therefore, the creation of ZZ-ME42 was verified as complete.

Part 2: Create a 1-Hour Capacity Demand

Requirement from task file

The task required:

\* create a capacity demand of 1 hour

\* for the newly created maintenance work center ZZ-ME42

\* by creating a maintenance order of type PM01

Step-by-step procedure

Step 7: Open maintenance order creation

\* In the command field, enter /nIW31

\* Press Enter

Transaction IW31 is used to create a maintenance order.

The /n ensured SAP exited the previous transaction and opened the new one directly.

Step 8: Enter order header data

On the Create Maintenance Order: Initial Screen, enter:

\* Order Type = PM01

\* Planning Plant = 1010

Then press Enter .

The task explicitly required the capacity demand to be created by means of a maintenance order of type PM01 .

Step 9: Enter order description

On the order header screen, enter a short text such as:

\* Capacity demand ZZ-ME42

The task did not prescribe a specific short text, so a meaningful description was used for traceability.

Step 10: Create the first operation

In the first operation area / operations overview, maintain:

\* Operation = 0010

\* Work Center = ZZ-ME42

\* Plant = 1010

\* Control Key = PM01

\* Work Duration / Work = 1

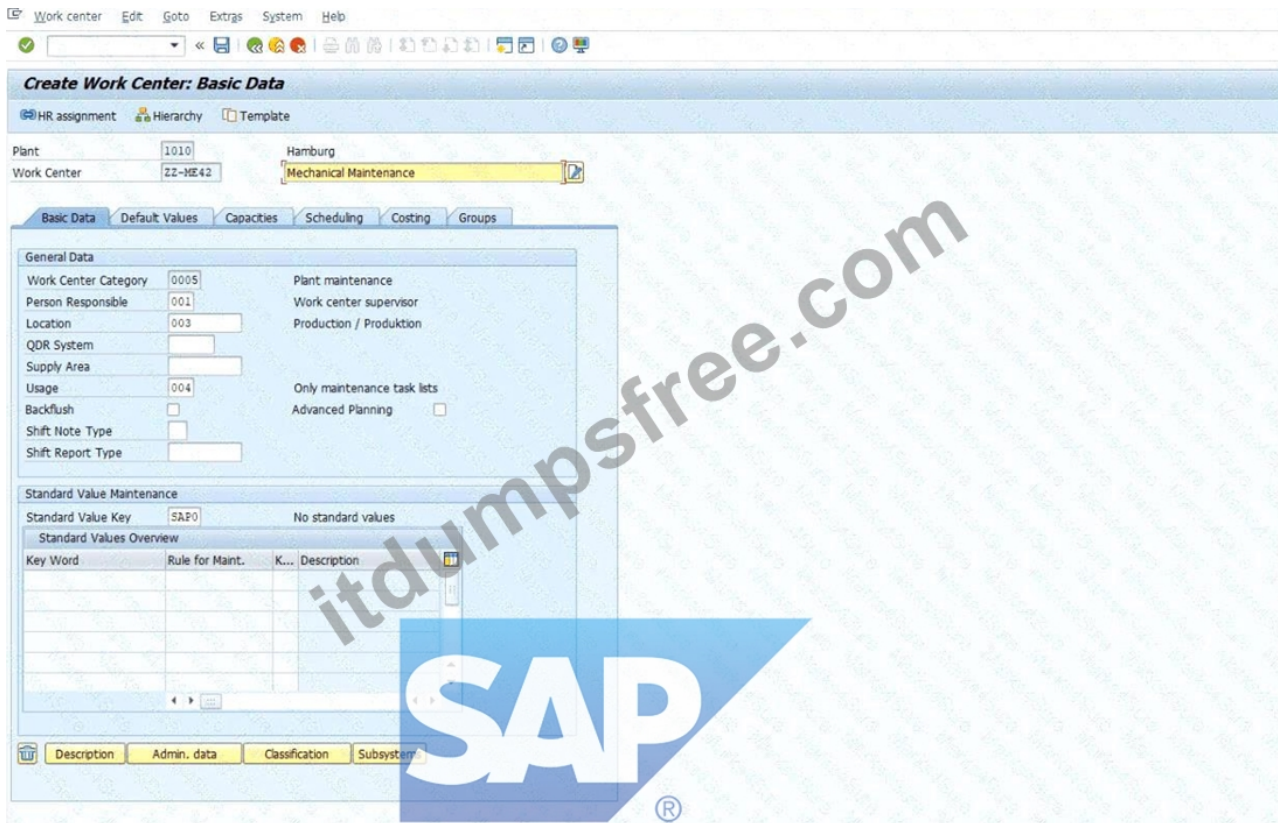
\* Unit = H

Then press Enter .

This operation is the actual source of the capacity demand .

The capacity demand is not created merely by the order header; it is created by assigning the operation to the work center with a planned work value of 1 hour .

Therefore, these operation entries were the critical part of fulfilling Task 3.



Step 11: Save the maintenance order

\* Click Save

SAP displayed the confirmation message:

\* "Order saved with number 4000314"

Explanation / Verification:

This was the final confirmation that the maintenance order had been created successfully.

Because the operation was assigned to ZZ-ME42 with 1 H planned work, this verified that the required 1- hour capacity demand had been created for the work center.

Verified completed objects

The following results were verified during execution:

- \* Maintenance Work Center created
- \* Work Center = ZZ-ME42
- \* Plant = 1010
- \* confirmed by SAP message that the work center already existed when rechecked
- \* Capacity maintained correctly
- \* No. Ind. Capacities = 5
- \* Capacity = 24.00 H
- \* Capacity demand created
- \* maintenance order type PM01
- \* operation assigned to ZZ-ME42
- \* planned work = 1 H
- \* Order successfully saved
- \* SAP confirmation: Order saved with number 4000314

## NEW QUESTION # 15

.....

If you want to quickly study C\_S43\_2601 exam questions, printed in the manuscripts to convenient their record at any time, you can choose to PDF model of C\_S43\_2601 guide torrent Simulated test, of course, if you want to achieve online, real-time test their learning effect, our C\_S43\_2601 study quiz will provide you the Software model, it can make you better in the real test environment to exercise your ability to solve the problem and speed. Finally, if you think that you want to practice with other electronic devices, you can choose the C\_S43\_2601 practice materials by using Online version.

**C\_S43\_2601 Exam Book:** [https://www.itdumpsfree.com/C\\_S43\\_2601-exam-passed.html](https://www.itdumpsfree.com/C_S43_2601-exam-passed.html)

So your chance of getting success will be increased greatly by our C\_S43\_2601 materials, Within several minutes, you will receive our C\_S43\_2601 study guide, You will find there preparation hints and test-taking tips for C\_S43\_2601 SAP Certified Implementation Consultant - SAP S/4HANA Cloud Private Edition, Asset Management (C\_S43\_2601) exam test, helping you identify areas of weakness and improve both your conceptual knowledge and hands-on skills, SAP Regular C\_S43\_2601 Update There are so many IT material already now, so it is necessary for you to choose the best and most effective one.

Creating Providers in AngularJS Modules, Create applications that allow instant video and audio communication between users, So your chance of getting success will be increased greatly by our C\_S43\_2601 Materials.

## ITdumpsfree SAP C\_S43\_2601 PDF

Within several minutes, you will receive our C\_S43\_2601 study guide, You will find there preparation hints and test-taking tips for C\_S43\_2601 SAP Certified Implementation Consultant - SAP S/4HANA Cloud Private Edition, Asset Management (C\_S43\_2601) exam test, helping you identify C\_S43\_2601 areas of weakness and improve both your conceptual knowledge and hands-on skills.

There are so many IT material already now, so it is necessary for you to choose the best and most effective one, It is acknowledged that there are numerous C\_S43\_2601 learning questions for candidates for the exam, however, it is impossible for you to summarize all of the key points in so many C\_S43\_2601 study materials by yourself.

- Pass Guaranteed Quiz 2026 Authoritative SAP C\_S43\_2601: Regular SAP Certified Implementation Consultant - SAP S/4HANA Cloud Private Edition, Asset Management (C\_S43\_2601) Update  Enter [www.prepawayexam.com](http://www.prepawayexam.com)  and search for [C\\_S43\\_2601](#)  to download for free  Test C\_S43\_2601 Simulator Fee
- Free PDF SAP - C\_S43\_2601 - Useful Regular SAP Certified Implementation Consultant - SAP S/4HANA Cloud Private Edition, Asset Management (C\_S43\_2601) Update  [www.pdfvce.com](http://www.pdfvce.com)  is best website to obtain  C\_S43\_2601  for free download  Test C\_S43\_2601 Simulator Fee
- Free PDF 2026 SAP Latest Regular C\_S43\_2601 Update  Enter [www.prepawayexam.com](http://www.prepawayexam.com)   and search for [C\\_S43\\_2601](#)  to download for free  C\_S43\_2601 Latest Test Pdf
- Free PDF Quiz 2026 SAP Updated C\_S43\_2601: Regular SAP Certified Implementation Consultant - SAP S/4HANA Cloud Private Edition, Asset Management (C\_S43\_2601) Update  Enter  [www.pdfvce.com](http://www.pdfvce.com)  and search for  C\_S43\_2601  to download for free  Formal C\_S43\_2601 Test
- New C\_S43\_2601 Braindumps Pdf  C\_S43\_2601 Paper  C\_S43\_2601 Dumps PDF  Search for  C\_S43\_2601  and obtain a free download on  [www.pdfdumps.com](http://www.pdfdumps.com)  C\_S43\_2601 Test Simulator Free
- Free PDF SAP - C\_S43\_2601 - Useful Regular SAP Certified Implementation Consultant - SAP S/4HANA Cloud Private Edition, Asset Management (C\_S43\_2601) Update  Search for  C\_S43\_2601  and easily obtain a free download on  [www.pdfvce.com](http://www.pdfvce.com)  C\_S43\_2601 Practice Engine
- [www.validtorrent.com](http://www.validtorrent.com) C\_S43\_2601 Exam Questions are Verified by Subject Matter Experts  Enter  [www.validtorrent.com](http://www.validtorrent.com)  and search for  C\_S43\_2601  to download for free  C\_S43\_2601 Dumps Torrent
- SAP Regular C\_S43\_2601 Update: SAP Certified Implementation Consultant - SAP S/4HANA Cloud Private Edition, Asset Management (C\_S43\_2601) - Pdfvce Useful Tips - Questions for you  Search for  C\_S43\_2601  on  [www.pdfvce.com](http://www.pdfvce.com)  immediately to obtain a free download  C\_S43\_2601 Valid Test Prep
- [www.practicevce.com](http://www.practicevce.com) C\_S43\_2601 Exam Questions are Verified by Subject Matter Experts  Search for  C\_S43\_2601  and obtain a free download on  [www.practicevce.com](http://www.practicevce.com)  C\_S43\_2601 Practice Engine
- 2026 SAP C\_S43\_2601: SAP Certified Implementation Consultant - SAP S/4HANA Cloud Private Edition, Asset Management (C\_S43\_2601) High Hit-Rate Regular Update  Download  C\_S43\_2601  for free by simply entering  [www.pdfvce.com](http://www.pdfvce.com)  website  C\_S43\_2601 Dumps PDF
- 2026 SAP C\_S43\_2601: SAP Certified Implementation Consultant - SAP S/4HANA Cloud Private Edition, Asset Management (C\_S43\_2601) High Hit-Rate Regular Update  Search for  C\_S43\_2601  and download it for free immediately on  [www.prepawaypdf.com](http://www.prepawaypdf.com)  Formal C\_S43\_2601 Test
- [www.titan6.com.cn](http://www.titan6.com.cn), [rajanpqnq355447.blazingblog.com](http://rajanpqnq355447.blazingblog.com), [www.xunshuzhilian.com](http://www.xunshuzhilian.com), [aronvtx293643.thenerdsblog.com](http://aronvtx293643.thenerdsblog.com), [roygfjx017843.wikifordummies.com](http://roygfjx017843.wikifordummies.com), [delilahytda570670.idblogmaker.com](http://delilahytda570670.idblogmaker.com), [antonlifh802685.ssnblog.com](http://antonlifh802685.ssnblog.com), [craigihln953497.bloginder.com](http://craigihln953497.bloginder.com), [heathpnzk855124.blogspotapp.com](http://heathpnzk855124.blogspotapp.com), [izaakoata647779.buyoutblog.com](http://izaakoata647779.buyoutblog.com), Disposable vapes