

Exam 300-410 Tests | 300-410 Reliable Real Exam



What's more, part of that BraindumpsIT 300-410 dumps now are free: https://drive.google.com/open?id=1uYy8EGtZ_NwxTwSZRDY12IEcUA3982_A

Our Implementing Cisco Enterprise Advanced Routing and Services study questions are suitable for a variety of levels of users, no matter you are in a kind of cultural level, even if you only have high cultural level, you can find in our 300-410 training materials suitable for their own learning methods. So, for every user of our study materials are a great opportunity, a variety of types to choose from, more and more students also choose our 300-410 Test Guide, then why are you hesitating? As long as you set your mind to, as long as you have the courage to try a new life, yearning for life for yourself, then to choose our Implementing Cisco Enterprise Advanced Routing and Services study questions, we will offer you in a short period of time effective way to learn, so immediately began to revise it, don't hesitate, let go to do!

Cisco 300-410 exam covers a wide range of topics including advanced routing protocols such as OSPFv3, BGP, and PBR, as well as advanced services such as QoS, SNMP, and NetFlow. In addition, candidates will be tested on their ability to design and troubleshoot enterprise networks using these advanced technologies. Implementing Cisco Enterprise Advanced Routing and Services certification is highly regarded in the industry, and passing the exam will demonstrate a high level of expertise in enterprise networking.

Cisco 300-410 Exam is a certification test that is designed to validate the knowledge and skills of IT professionals who are involved in implementing advanced routing and services in enterprise-level networks. 300-410 exam is part of the Cisco Certified Specialist - Enterprise Advanced Infrastructure Implementation certification track and is intended for network engineers, system engineers, and other IT professionals who are responsible for designing, implementing, and maintaining complex enterprise networks.

>> Exam 300-410 Tests <<

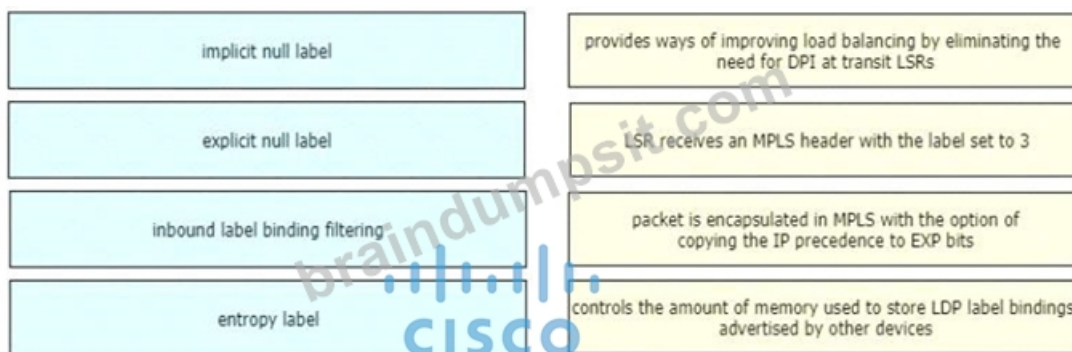
300-410 Certification Training & 300-410 Dumps Torrent & 300-410 Exam Materials

When dealing with any kind of exams, the most important thing is to find a scientific way to review effectively. our 300-410 exam materials are elemental materials you cannot miss. For our passing rate of 300-410 practice quiz has reached up to 98 to 100 percent up to now. Besides, free updates of 300-410 learning guide will be sent to your mailbox freely for one year after payment, and you will have a great experience during usage of our 300-410 study prep.

Cisco Implementing Cisco Enterprise Advanced Routing and Services Sample Questions (Q463-Q468):

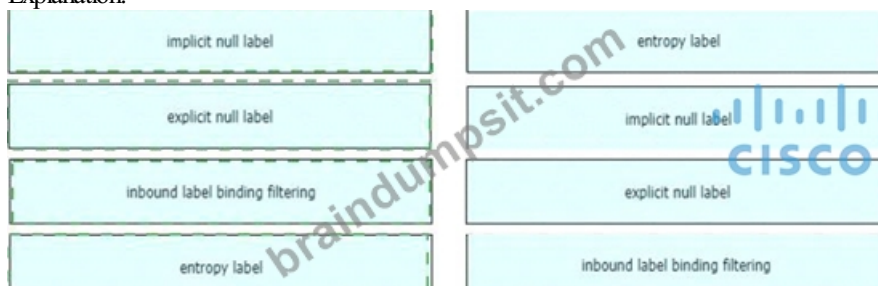
NEW QUESTION # 463

Drag and drop the LDP features from the left onto the descriptions on the right



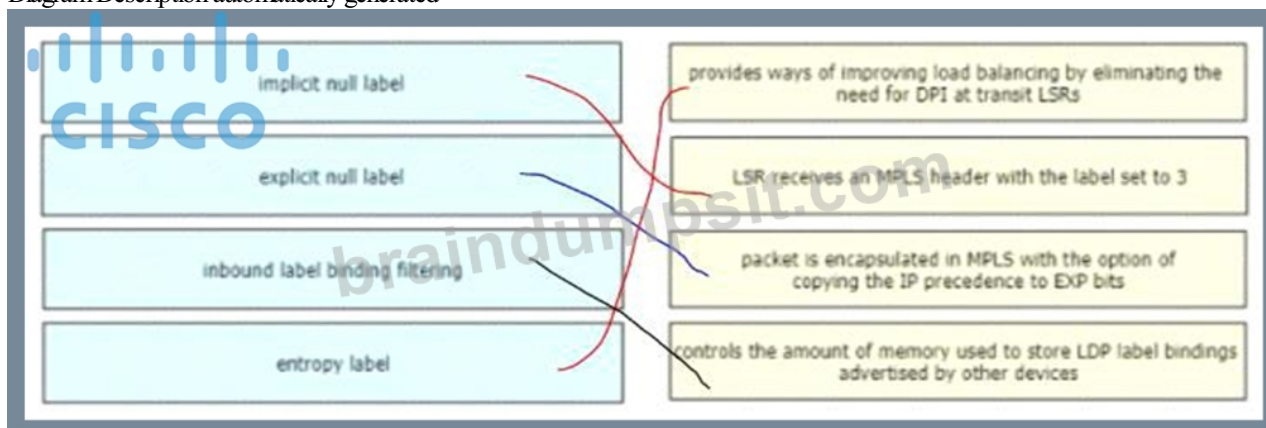
Answer:

Explanation:



Explanation

Diagram Description automatically generated



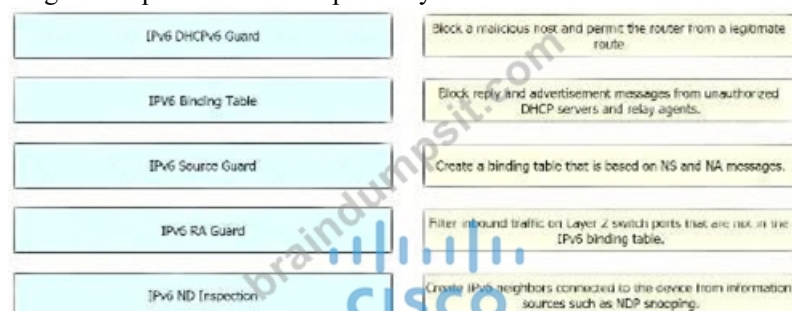
The MPLS LDP Inbound Label Binding Filtering feature can be used to control the amount of memory used to store Label Distribution Protocol (LDP) label bindings advertised by other devices. For example, in a simple Multiprotocol Label Switching (MPLS) Virtual Private Network (VPN) environment, the VPN provider edge (PE) devices might require label switched paths (LSPs) only to their peer PE devices (that is, they do not need LSPs to core devices). Inbound label binding filtering enables a PE device to accept labels only from other PE devices.

Reference:

https://www.cisco.com/c/en/us/td/docs/ios-xml/ios/mp_ldp/configuration/15-sy/mp_ldp-15-sy-book/mp_ldp-inbound-filtr.html

NEW QUESTION # 464

Drag and Drop the IPv6 First-Hop Security features from the left onto the definitions on the right.



Answer:

Explanation:



Explanation

Graphical user interface, chart Description automatically generated



NEW QUESTION # 465

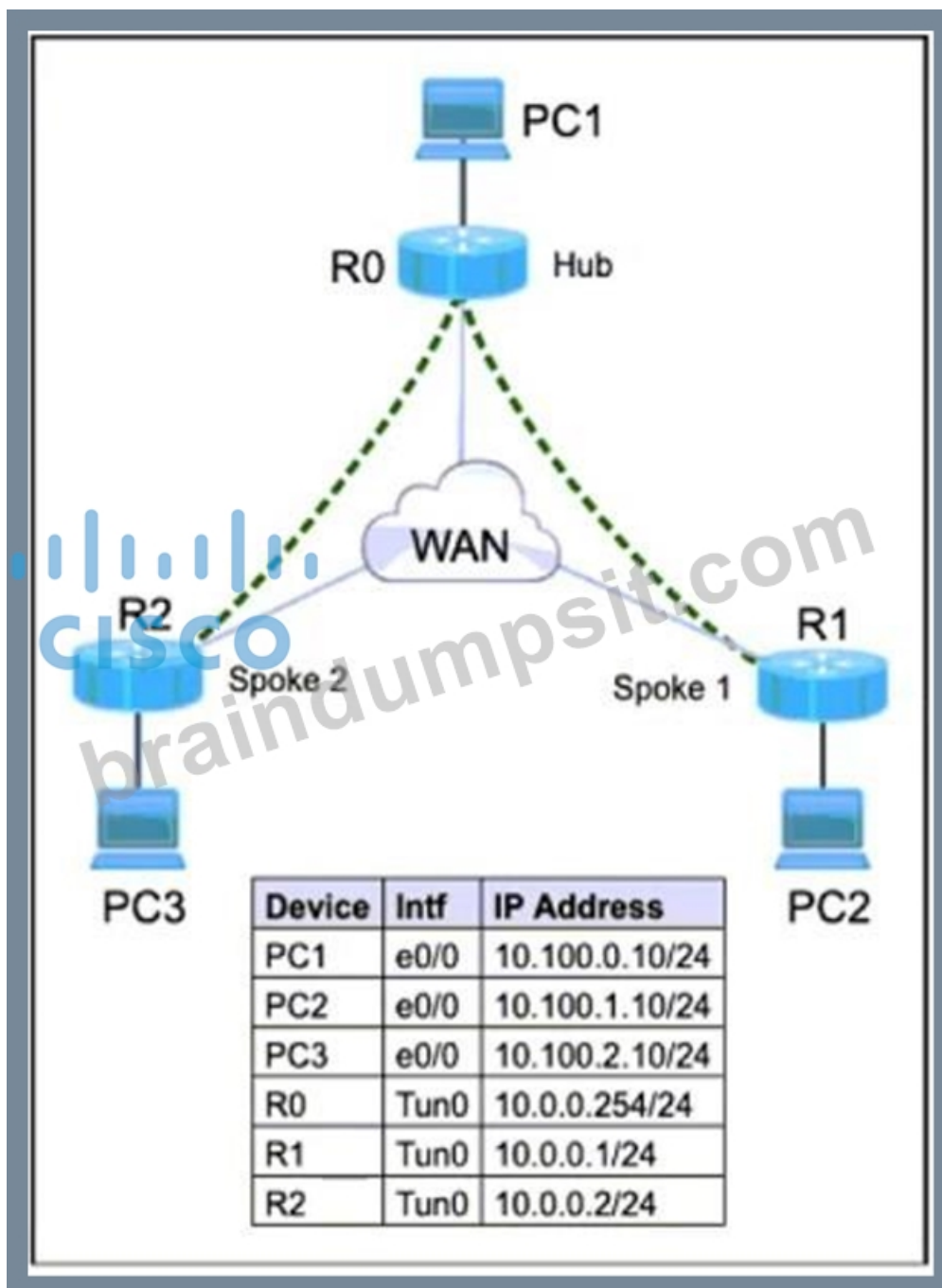
LAB SIMULATION 10

Guidelines

This is a lab item in which tasks will be performed on virtual devices.

- Refer to the Tasks tab to view the tasks for this lab item.
- Refer to the Topology tab to access the device console(s) and perform the tasks.
- Console access is available for all required devices by clicking the device icon or using the tab(s) above the console window.
- All necessary preconfigurations have been applied.
- Do not change the enable password or hostname for any device.
- Save your configurations to NVRAM before moving to the next item.
- Click Next at the bottom of the screen to submit this lab and move to the next question.
- When Next is clicked, the lab closes and cannot be reopened.

Topology



Tasks

Configure IPSec security policy on tunnel interfaces to ensure data confidentiality and integrity where mGRE tunnels are up and running between HUB and SPOKE routers.

1. Configure the ISAKMP policy parameters with the following attributes:

- AES256
- SHA256
- Group2
- lifetime 86400

2. Ensure that GRE IP Header should be encrypted inside the IPSec packet. Verify IPSec security association and ISAKMP encrypted key. Use ISAKMP key "abc123".

3. Configure a flexible ISAKMP Policy on the HUB to add peers that have the dynamic IP addresses where SPOKES must add HUB IP static entry using an encrypted key. Use a single command to configure it. Use IPSec phase-2 transform-set name as T-SET and IPSec Profile name as 'IPSEC-PROFILE'.

Answer:

Explanation:

Routers R0, R1, R2:


```
crypto isakmp policy 10
  encr AES256
  hash SHA256
  group 2
  lifetime 8640
```

```
crypto ipsec transform-set T-SET esp-aes 256 esp-sha-hmac
crypto ipsec profile IPSEC-PROFILE
set transform-set T-SET
```

R0:

```
crypto isakmp key abc123 address 0.0.0.0 0.0.0.0
```

```
interface Tunnel0
```

```
ip address 10.0.0.254 255.255.255.0
```

```
tunnel source HUB IP ADDRESS – Get this from the CLI on the SIM
```

```
tunnel mode gre multipoint
```

```
tunnel protection ipsec profile IPSEC-PROFILE
```

R1, R2:

```
crypto isakmp key abc123 address HUB IP ADDRESS – Get this from the CLI on the SIM.
```

R1 only:

```
interface Tunnel0
```

```
ip address 10.0.0.1 255.255.255.0
```

```
tunnel source SPOKE1_IP_ADDRESS - Get from CLI
```

```
tunnel destination HUB_IP_ADDRESS – Get from CLI
```

```
tunnel mode gre multipoint
```

```
tunnel protection ipsec profile IPSEC-PROFILE
```

R2 only:

```
interface Tunnel0
```

```
ip address 10.0.0.2 255.255.255.0
```



```
tunnel source SPOKE2_IP_ADDRESS – Get from CLI
tunnel destination HUB_IP_ADDRESS – Get from CLI
tunnel mode gre multipoint
tunnel protection ipsec profile IPSEC-PROFILE
```

Verification:

```
show crypto isakmp sa
show crypto ipsec sa
```

NEW QUESTION # 466

Refer to the exhibit. An engineer examines the BGP update for the IPv6 prefix 2001:db8::1/128, which should have been summarized into a /64 prefix. Which sequence of actions achieves the summarization?

```
R1#show bgp ipv6 unicast 2001:db8::1/128
BGP routing table entry for 2001:db8::1/128, version 3
Paths: (1 available, best #1, table Global-IPv6-Table)
Not advertised to any peer
Local
  2001:db8:33:33::33 (metric 128) from 2001:db8:11:11::11 (1.1.1.1)
    Origin IGP, metric 0, localpref 100, valid, internal, best
    Originator: 3.3.3.3, Cluster list: 1.1.1.1
```

- A. R1 is a route reflector with a router ID of 3.3.3.3, and the originator of the prefix is a route reflector client, which has a router ID of 3.3.3.3. Both routers belong to the same AS. Configure an aggregate address on the router with ID 1.1.1.1 for the prefix.
- B. R1 is a route reflector client of a RR with a router ID of 1.1.1.1, and the originator of the prefix has a router ID of 3.3.3.3. Both routers belong to different ASs. The prefix is not advertised to any peer and must be advertised using the network statement on R3.
- **C. R1 is a route reflector client of a RR with a router ID of 1.1.1.1, and the originator of the prefix has a router ID of 3.3.3.3. Both routers belong to the same AS. Configure an aggregate address on the router with ID 3.3.3.3 for the prefix.**
- D. R1 is a route reflector with a router ID of 1.1.1.1, and the originator of the prefix is a route reflector client, which has a router ID of 3.3.3.3. Both routers belong to the same AS. Configure an aggregate address on the router with ID 1.1.1.1 for the prefix.

Answer: C

NEW QUESTION # 467

Refer to the exhibit. An engineer configures two ASBRs, 10.4.17.6 and 10.4.15.5, in an OSPF network to redistribute routes from EIGRP. However, both ASBRs show the EIGRP routes as equal costs even though the next-hop router 10.4.17.6 is closer to R1. How should the network traffic to the EIGRP prefixes be sent via 10.4.17.6?

```
R1#show ip route ospf
```

```
10.0.0.0/24 is subnetted, 7 subnets
```

```
O E2 10.4.9.0 [110/200] via 10.4.17.6, 00:06:43,  
FastEthernet0/0
```

```
[110/200] via 10.4.15.5, 00:06:43,  
FastEthernet0/1
```

```
O IA 10.4.27.0 [110/2] via 10.4.15.5, 00:06:44,  
FastEthernet0/1
```

```
O E2 10.4.49.0 [110/200] via 10.4.17.6, 00:06:43,  
FastEthernet0/0
```

- A. The ASBR 10.4.17.6 should assign a tag to match and assign a lower metric on R1.
- B. The administrative distance should be raised to 120 from the ASBR 10.4.17.6.
- C. The administrative distance should be raised to 120 from the ASBR 10.4.15.5.
- **D. The redistributed prefixes should be advertised as Type 1.**

Answer: D

NEW QUESTION # 468

.....

BraindumpsIT allows all visitors to try a free demo of 300-410 pdf questions and practice tests to assess the quality of our 300-410 study material. Your money is 100% secure as we will ensure that you crack the Cisco 300-410 test on the first attempt. You will also enjoy 24/7 efficient support from our customer support team before and after the purchase of Cisco 300-410 Exam Dumps. If you face any issues while using our 300-410 PDF dumps or 300-410 practice exam software (desktop and web-based), contact BraindumpsIT customer service for guidance.

300-410 Reliable Real Exam https://www.braindumpsit.com/300-410_real-exam.html

- 300-410 exam materials - 300-410 practice questions - 300-410 study guide ☐ Search for ☀ 300-410 ☀ ☐ and obtain a free download on ► www.practicevce.com ◀ ☐ Study Materials 300-410 Review
- Valid 300-410 Guide Files ☐ Valid 300-410 Test Dumps ☐ Valid 300-410 Guide Files ☐ Go to website 《 www.pdfvce.com 》 open and search for 【 300-410 】 to download for free ☺ New 300-410 Test Blueprint
- Hot Exam 300-410 Tests | High-quality 300-410: Implementing Cisco Enterprise Advanced Routing and Services 100% Pass ☐ Simply search for ➡ 300-410 ☐ ☐ for free download on 「 www.examcollectionpass.com 」 ☐ Reliable 300-410 Exam Dumps
- Hot Exam 300-410 Tests | High-quality 300-410: Implementing Cisco Enterprise Advanced Routing and Services 100% Pass ☐ Open ➡ www.pdfvce.com ☐ enter ☐ 300-410 ☐ and obtain a free download ☐ Training 300-410 Materials
- Reliable 300-410 Test Experience ☐ Valid 300-410 Guide Files ☐ Exam 300-410 Guide ☐ Search for ▷ 300-410 ◁ and easily obtain a free download on ▷ www.testkingpass.com ◁ ☐ Exam 300-410 Collection
- 300-410 Pass-Sure Materials - 300-410 Quiz Bootcamp - 300-410 Test Quiz ☐ Search for (300-410) on ► www.pdfvce.com ☐ immediately to obtain a free download ☐ 300-410 Examcollection Questions Answers
- 300-410 Study Tool ☐ 300-410 Test Discount ☐ Training 300-410 Materials ☐ Open website ► www.troytecdumps.com ◀ and search for ➡ 300-410 ☐ for free download ☐ 300-410 Examcollection Questions Answers
- 300-410 Examcollection Questions Answers ☐ Reliable 300-410 Test Experience ☐ Valid 300-410 Test Dumps ☐ Search for { 300-410 } and download it for free immediately on ▷ www.pdfvce.com ◁ ☐ Valid 300-410 Guide Files
- Hot Exam 300-410 Tests | High-quality 300-410: Implementing Cisco Enterprise Advanced Routing and Services 100% Pass ☐ Enter ☐ www.practicevce.com ☐ and search for ▷ 300-410 ◁ to download for free ☐ 300-410 Examcollection Questions Answers

- 300-410 Visual Cert Exam □ Valid 300-410 Test Dumps □ 300-410 Test Discount □ Enter [www.pdfvce.com] and search for (300-410) to download for free □ Reliable 300-410 Exam Dumps
- Valid 300-410 Guide Files □ 300-410 Examcollection Questions Answers □ Exam 300-410 Guide □ The page for free download of { 300-410 } on ▷ www.prepawayete.com ◁ will open immediately □ Valid 300-410 Guide Files
- bbs.t-firefly.com, taonguyenai.com, myportal.utt.edu.tt, myportal.utt.edu.tt, myportal.utt.edu.tt, myportal.utt.edu.tt, myportal.utt.edu.tt, myportal.utt.edu.tt, myportal.utt.edu.tt, myportal.utt.edu.tt, myportal.utt.edu.tt, www.stes.tyc.edu.tw, www.stes.tyc.edu.tw, tutor.shmuprojects.co.uk, launchpad.net.in, www.stes.tyc.edu.tw, bd.enrollbusiness.com, bbs.t-firefly.com, Disposable vapes

What's more, part of that BraindumpsIT 300-410 dumps now are free: https://drive.google.com/open?id=1uYy8EGtZ_NwxTwSZRDY12iEcUA3982_A