

# DP-600 Authorized Pdf & DP-600 Reliable Test Cram

## DP-600: Implementing Analytics Solutions Using Microsoft Fabric

### ▼ 基本概念

- **Tenant**是组织用于创建、存储和管理 Fabric 项目的专用空间，位于层级结构的顶层。
- **Capacity**是指在特定时间可供使用的专用资源集合。一个 **Tenant** 可以拥有一个或多个容量。容量定义了资源执行活动或产出的能力。
- **Domain** 是对 **Workspace** 的逻辑（符合组织逻辑的方式）分组，以便不同群体的人员更轻松地访问工作区。
- **Workspace** 是容器，为执行的工作分配 **Capacity**，并控制谁可以访问其中的 **Item**。
- **Item** 是在 Fabric 中创建和管理的数据资产。Item 有多种类型，例如数据仓库、数据管道、数据集、报表和仪表板。
- **Workload** 是功能模块。不同 **Workload** 决定你能在该 **Workspace** 中创建哪些类型的 **Items**。

### ▼ 基本 data warehouse 概念

- 数据湖 (Data Lake) 是数据的存储层，所有的 data 以 Schema-on-read 和不支持事务的方式储存。
- Lakehouse 以 Delta 格式存储，给数据湖加上了 Transaction Log，支持 ACID 事务了。可以使用 SQL 查询和分析数据；也可以使用 Spark 处理数据并创建机器学习模型（即写数据用 Spark，读数据用 SQL）。
  - 主要使用 Spark 引擎。
- Fabric data warehouse 是一个关系型数据仓库，构建于 **OneLake** 之上。可以使用 SQL 查询和分析数据，提供完整的 T-SQL 语义（支持 INSERT/UPDATE/DELETE）。
  - 主要使用 T-SQL 引擎。
- **OneLake**：逻辑上的单一湖。它是所有 Fabric 工作负载（Lakehouse, Warehouse, Power BI）的统一存储底座。不管物理上在哪，逻辑上全公司只有一个入口。（屏蔽底层物理账号）
- 构建现代数据仓库：
  - Data ingestion 数据摄取——将数据从源系统移动到数据仓库。
  - Data storage 数据存储——针对分析优化的格式存储数据。
  - Data processing 数据处理——将数据转换（transforming）为可供分析工具使用的格式。
  - Data analysis and delivery 数据分析与交付——分析数据以获取洞察 insights，并将这些洞察交付给业务部门。
- Lakehouse 是一个由文件、文件夹、tables 和 shortcuts 组成的集合。
  - Spark 引擎和 SQL 引擎都使用它进行大数据处理

What's more, part of that GuideTorrent DP-600 dumps now are free: <https://drive.google.com/open?id=1zZd0nA6ljyVMsetEGsCVeduX8tsD32T>

Customers always attach great importance to the quality of DP-600 exam torrent. We can guarantee that our study materials deserve your trustee. We have built good reputation in the market now. After about ten years' development, we have owned a perfect quality control system. All DP-600 exam prep has been inspected strictly before we sell to our customers. The inspection process is very strict and careful. Any small mistake can be tested clearly. So you can completely believe our DP-600 Exam Guide. What's more, all contents are designed carefully according to the exam outline. As you can see, the quality of our DP-600 exam torrent can stand up to the test. Your learning will be a pleasant process.

As we know, information disclosure is illegal and annoying. Of course, we will strictly protect your information. That's our society rule that everybody should obey. So if you are looking for a trusting partner with right DP-600 guide torrent you just need, please choose us. I believe you will feel wonderful when you contact us. We have different DP-600 Prep Guide buyers from all over the world, so we pay more attention to the customer privacy. Because we are in the same boat in the market, our benefit is linked together.

>> DP-600 Authorized Pdf <<

## DP-600 Reliable Test Cram & New DP-600 Braindumps Questions

People from all walks of life all work hard for the future. You must work hard to upgrade your IT skills. Then, do you have obtained Microsoft DP-600 certificate which is very popular? How much do you know about DP-600 test? If you want to pass DP-600 exam without enough exam related knowledge, how should you do? But don't you worry: GuideTorrent will give assistance to you.

## Microsoft DP-600 Exam Syllabus Topics:

Topic	Details
Topic 1	<ul style="list-style-type: none"> <li>Prepare data: This section of the exam measures the skills of engineers and covers essential data preparation tasks. It includes establishing data connections and discovering sources through tools like the OneLake data hub and the real-time hub. Candidates must demonstrate knowledge of selecting the appropriate storage type—lakehouse, warehouse, or eventhouse—depending on the use case. It also includes implementing OneLake integrations with Eventhouse and semantic models. The transformation part involves creating views, stored procedures, and functions, as well as enriching, merging, denormalizing, and aggregating data. Engineers are also expected to handle data quality issues like duplicates, missing values, and nulls, along with converting data types and filtering. Furthermore, querying and analyzing data using tools like SQL, KQL, and the Visual Query Editor is tested in this domain.</li> </ul>
Topic 2	<ul style="list-style-type: none"> <li>Implement and manage semantic models: This section of the exam measures the skills of architects and focuses on designing and optimizing semantic models to support enterprise-scale analytics. It evaluates understanding of storage modes and implementing star schemas and complex relationships, such as bridge tables and many-to-many joins. Architects must write DAX-based calculations using variables, iterators, and filtering techniques. The use of calculation groups, dynamic format strings, and field parameters is included. The section also includes configuring large semantic models and designing composite models. For optimization, candidates are expected to improve report visual and DAX performance, configure Direct Lake behaviors, and implement incremental refresh strategies effectively.</li> </ul>
Topic 3	<ul style="list-style-type: none"> <li>Maintain a data analytics solution: This section of the exam measures the skills of administrators and covers tasks related to enforcing security and managing the Power BI environment. It involves setting up access controls at both workspace and item levels, ensuring appropriate permissions for users and groups. Row-level, column-level, object-level, and file-level access controls are also included, alongside the application of sensitivity labels to classify data securely. This section also tests the ability to endorse Power BI items for organizational use and oversee the complete development lifecycle of analytics assets by configuring version control, managing Power BI Desktop projects, setting up deployment pipelines, assessing downstream impacts from various data assets, and handling semantic model deployments using XMLA endpoint. Reusable asset management is also a part of this domain.</li> </ul>

## Microsoft Implementing Analytics Solutions Using Microsoft Fabric Sample Questions (Q28-Q33):

### NEW QUESTION # 28

You need to resolve the issue with the pricing group classification.

How should you complete the T-SQL statement? To answer, select the appropriate options in the answer area.

NOTE: Each correct selection is worth one point.

#### Answer Area

```

CREATE [ ] [dbo].[ProductsWithPricingGroup]
AS
SELECT ProductId,
        ProductName,
        ProductCategory,
        ListPrice,
        [ ]
        WHEN ListPrice <= 50 THEN 'low'
        [ ]
END AS PricingGroup
FROM [dbo].[Products]

```



Answer Area



```
CREATE VIEW [dbo].[ProductsWithPricingGroup]
AS
SELECT ProductCategory,
ListPrice,
CASE
WHEN (ListPrice >= 50 AND ListPrice < 1000 ) THEN 'medium'
WHEN (ListPrice > 50 AND ListPrice <= 1000 ) THEN 'medium'
WHEN (ListPrice >= 50 AND ListPrice < 1000 ) THEN 'medium'
WHEN ListPrice BETWEEN 50 AND 1000 ) THEN 'medium'
END AS PricingGroup
FROM dbo.Products
```

Answer:

Explanation:

Answer Area

```
CREATE VIEW [dbo].[ProductsWithPricingGroup]
AS
SELECT ProductCategory,
ListPrice,
CASE
WHEN (ListPrice >= 50 AND ListPrice < 1000 ) THEN 'medium'
WHEN (ListPrice > 50 AND ListPrice <= 1000 ) THEN 'medium'
WHEN (ListPrice >= 50 AND ListPrice < 1000 ) THEN 'medium'
WHEN ListPrice BETWEEN 50 AND 1000 ) THEN 'medium'
END AS PricingGroup
FROM dbo.Products
```



Explanation:

Answer Area

```
CREATE VIEW [dbo].[ProductsWithPricingGroup]
AS
SELECT ProductID,
ProductCategory,
ListPrice,
CASE
WHEN (ListPrice >= 50 AND ListPrice < 1000 ) THEN 'medium'
WHEN (ListPrice > 50 AND ListPrice <= 1000 ) THEN 'medium'
WHEN (ListPrice >= 50 AND ListPrice < 1000 ) THEN 'medium'
WHEN ListPrice BETWEEN 50 AND 1000 ) THEN 'medium'
END AS PricingGroup
FROM dbo.Products
```

- \* You should use CREATE VIEW to make the pricing group logic available for T-SQL queries.
  - \* The CASE statement should be used to determine the pricing group based on the list price.
- The T-SQL statement should create a view that classifies products into pricing groups based on the list price. The CASE statement is the correct conditional logic to assign each product to the appropriate pricing group. This view will standardize the pricing group logic across different databases and semantic models.

NEW QUESTION # 29

You have a Fabric tenant that contains a warehouse named Warehouse1. Warehouse1 contains three schemas named schemaA, schemaB, and schemaC. You need to ensure that a user named User1 can truncate tables in schemaA only. How should you complete the T-SQL statement? To answer, select the appropriate options in the answer area. NOTE: Each correct selection is worth one point.

Answer Area

```
GRANT [ALTER] ON SCHEMA :: schemaA TO User1;
```

Answer:

Explanation:

Answer Area

```
GRANT ALTER ON SCHEMA :: schemaA TO User1;
```

Explanation:



GRANT ALTER ON SCHEMA::schemaA TO User1;

The ALTER permission allows a user to modify the schema of an object, and granting ALTER on a schema will allow the user to perform operations like TRUNCATE TABLE on any object within that schema. It is the correct permission to grant to User1 for truncating tables in schemaA.

References =

GRANT Schema Permissions

Permissions That Can Be Granted on a Schema

### NEW QUESTION # 30

You have a Fabric tenant that contains a lakehouse named lakehouse1. Lakehouse1 contains a Delta table named Customer.

When you query Customer, you discover that the query is slow to execute. You suspect that maintenance was NOT performed on the table.

You need to identify whether maintenance tasks were performed on Customer.

Solution: You run the following Spark SQL statement:

```
DESCRIBE HISTORY customer
```

Does this meet the goal?

- A. No
- B. Yes

**Answer: B**

### NEW QUESTION # 31

You have a Fabric tenant that contains a workspace named Workspace1.

You plan to deploy a semantic model named Model1 by using the XMLA endpoint.

You need to optimize the deployment of Model1. The solution must minimize how long it takes to deploy Model1.

What should you do in Workspace1?

- A. Select Users can edit data models in the Power BI service.
- B. Select Large semantic model storage format.
- C. Set Enable Cache for Shortcuts to On.
- D. Select Small semantic model storage format.

**Answer: D**

Explanation:

When using XMLA endpoint for deployment or processing, the semantic model storage format impacts deployment times.

Small storage format allows faster metadata operations and shorter deployment times.

Large semantic model storage format is only needed for extremely large models (> 10 GB dataset limit), and it increases deployment overhead.

The other options (B: service editing, C: cache for shortcuts) are unrelated to XMLA endpoint deployment performance.

Reference:

Power BI semantic model storage format

The Answer: Select Small semantic model storage format.

### NEW QUESTION # 32

You have a Fabric tenant that contains a lakehouse named LH1.

You need to deploy a new semantic model. The solution must meet the following requirements:

\* Support complex calculated columns that include aggregate functions, calculated tables, and Multidimensional Expressions (MDX) user hierarchies.

\* Minimize page rendering times.

How should you configure the model? To answer, select the appropriate options in the answer area.

NOTE: Each correct selection is worth one point.

Answer Area

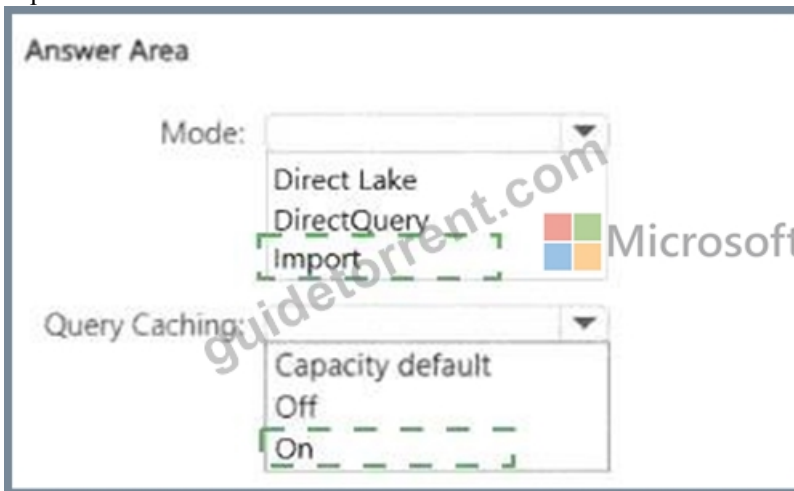


Mode:   
Direct Lake  
DirectQuery  
Import

Query Caching:   
Capacity default  
Off  
On

**Answer:**

Explanation:



Explanation:

Answer Area

Mode:

Query Caching:

Supports complex calculated columns (with aggregate functions, calculated tables, MDX hierarchies).

Minimizes page rendering times.

Step 1 - Choosing the Mode

Direct Lake # Best for near real-time queries, avoids duplication, but has limitations (e.g., some complex calculated columns, MDX user hierarchies are not fully supported).

DirectQuery # Sends queries to the source each time. It supports complex expressions but is slow (not optimal for minimizing page rendering times).

Import # Data is loaded into VertiPaq in-memory engine, supports full DAX capabilities, calculated tables, MDX hierarchies, and provides fastest query performance.

# Correct choice: Import.

Step 2 - Choosing Query Caching

Capacity default # Relies on the workspace/capacity setting.

Off # Disables caching, which could slow down report rendering.

On # Ensures queries are cached for faster page rendering times.

# Correct choice: On.

Final Answer:

Mode: Import

Query Caching: On

References:

Semantic model storage modes in Fabric

Query caching in Power BI / Fabric

## NEW QUESTION # 33

.....

The biggest advantage of our Implementing Analytics Solutions Using Microsoft Fabric study question to stand the test of time and the market is that our sincere and warm service. To help examinee to pass Implementing Analytics Solutions Using Microsoft Fabric exam, we are establishing a perfect product and service system between us. We can supply right and satisfactory DP-600 exam questions you will enjoy the corresponding product and service. We can't say we are the absolutely 100% good, but we are doing our best to service every customer. Only in this way can we keep our customers and be long-term cooperative partners. Looking forwarding to your DP-600 Test Guide use try!

**DP-600 Reliable Test Cram:** <https://www.guidetorrent.com/DP-600-pdf-free-download.html>

- Microsoft DP-600 Exam Questions [2026] Right Preparation Material  Open website ( [www.troytecdumps.com](http://www.troytecdumps.com) ) and search for ➡ DP-600  for free download  DP-600 Test Assessment
- Where To Find Real Microsoft DP-600 Exam Questions  《 [www.pdfvce.com](http://www.pdfvce.com) 》 is best website to obtain ➤ DP-600  for free download  Valid DP-600 Exam Topics
- Pass Guaranteed 2026 Updated Microsoft DP-600 Authorized Pdf  Search for  DP-600  and download exam materials for free through 「 [www.prep4sures.top](http://www.prep4sures.top) 」  Valid Real DP-600 Exam
- Reliable DP-600 Test Practice  DP-600 100% Exam Coverage  DP-600 Complete Exam Dumps  Search for ➡ DP-600  and download it for free immediately on ➡ [www.pdfvce.com](http://www.pdfvce.com)   Dumps DP-600 Cost
- Quiz Microsoft - DP-600 - Implementing Analytics Solutions Using Microsoft Fabric Authoritative Authorized Pdf  The page for free download of ➤ DP-600 ◀ on  [www.verifiedumps.com](http://www.verifiedumps.com)  will open immediately  Valid Dumps DP-600 Pdf
- DP-600 Official Cert Guide  DP-600 Exam Overviews  DP-600 Exam Blueprint  Copy URL 【 [www.pdfvce.com](http://www.pdfvce.com) 】 open and search for ✨ DP-600  ✨  to download for free  DP-600 Official Cert Guide
- Quiz 2026 Microsoft Reliable DP-600: Implementing Analytics Solutions Using Microsoft Fabric Authorized Pdf  Search for { DP-600 } and download exam materials for free through 《 [www.easy4engine.com](http://www.easy4engine.com) 》  DP-600 Test Simulator Free
- DP-600 Complete Exam Dumps  DP-600 Test Simulator Free  DP-600 Exam Blueprint  ➡ [www.pdfvce.com](http://www.pdfvce.com)  is best website to obtain ✨ DP-600  ✨  for free download  DP-600 Authorized Test Dumps
- Valid DP-600 Test Questions  New DP-600 Dumps Book  DP-600 Test Simulator Free  The page for free download of { DP-600 } on 「 [www.prepawayete.com](http://www.prepawayete.com) 」 will open immediately  DP-600 Authorized Test Dumps
- Exam DP-600 Sample  DP-600 Exam Blueprint  Exam DP-600 Objectives Pdf  Copy URL  [www.pdfvce.com](http://www.pdfvce.com)  open and search for 《 DP-600 》 to download for free  New DP-600 Dumps Book
- Three User-Friendly and Easy-to-Install [www.examcollectionpass.com](http://www.examcollectionpass.com) DP-600 Exam Questions  Enter ➤ [www.examcollectionpass.com](http://www.examcollectionpass.com)  and search for 《 DP-600 》 to download for free  Valid Real DP-600 Exam
- [kaitlynztrk723645.wikiannouncement.com](http://kaitlynztrk723645.wikiannouncement.com), [www.stes.tyc.edu.tw](http://www.stes.tyc.edu.tw), [kianaryvu210503.birderswiki.com](http://kianaryvu210503.birderswiki.com), [aronvxsh370907.blogofchange.com](http://aronvxsh370907.blogofchange.com), [poppyouyc620826.ourcodeblog.com](http://poppyouyc620826.ourcodeblog.com), [tealbookmarks.com](http://tealbookmarks.com), [www.stes.tyc.edu.tw](http://www.stes.tyc.edu.tw), [deanmaikg037441.wikiinside.com](http://deanmaikg037441.wikiinside.com), [zaynabmpnd765918.idblogmaker.com](http://zaynabmpnd765918.idblogmaker.com), [iqedition.com](http://iqedition.com), Disposable vapes

BTW, DOWNLOAD part of GuideTorrent DP-600 dumps from Cloud Storage: <https://drive.google.com/open?id=1zZd0nA6ljyVMsetEGsCVeduX8tsD32T>