

Free N10-009 Dumps offer you accurate Latest Test Testking to pass CompTIA Network+ Certification Exam exam



BONUS!!! Download part of ITexamReview N10-009 dumps for free: <https://drive.google.com/open?id=15k4xXnKZnMUoOoEn8wZ-FMjK6eu49jWp>

The last format is desktop N10-009 practice test software that can be accessed easily just by installing the software on the Windows Pc or Laptop. The desktop software format can be accessed offline without any internet so the students who don't have internet won't struggle in the preparation for N10-009 Exam. These three forms are specially made for the students to access them according to their comfort zone and N10-009 exam prepare for the best.

Do you like to practice study materials on paper? If you do, you can try our N10-009 exam dumps. N10-009 PDF version is printable, and you can study anywhere and anytime. We offer you free demo for you to have a try before buying, so that you can have a better understanding of N10-009 Exam Dumps what you are going to buy. Free update for 365 days is available, and you can get the latest information about the N10-009 exam dumps timely. The update version will be sent to your email automatically.

>> **Free N10-009 Dumps** <<

Latest N10-009 Test Testking | N10-009 Reliable Braindumps Files

Are you still satisfied with your present job? Do you still have the ability to deal with your job well? Do you think whether you have the competitive advantage when you are compared with people working in the same field? If your answer is no, you are a right place now. Because our N10-009 exam torrent will be your good partner and you will have the chance to change your work which you are not satisfied with, and can enhance your ability by our N10-009 Guide questions, you will pass the N10-009 exam and achieve your target. Just free download the demo of our N10-009 exam questions!

CompTIA Network+ Certification Exam Sample Questions (Q464-Q469):

NEW QUESTION # 464

A network administrator recently updated configurations on a Layer 3 switch. Following the updates, users report being unable to reach a specific file server. Which of the following is the most likely cause?

- A. Switching loop
- B. Wrong default route

- C. Duplicate IP addresses
- **D. Incorrect ACLs**

Answer: D

Explanation:

*Since this issue occurred after a configuration change on a Layer 3 switch, the most likely cause is misconfigured ACLs (Access Control Lists).

*ACLs control which traffic is allowed or denied, so an incorrect ACL may be blocking access to the file server.

*Why not the other options?

*Switching loop (B): A switching loop occurs at Layer 2 (not Layer 3) and causes network-wide broadcast storms, not just loss of access to a file server.

*Duplicate IP addresses (C): This would cause connectivity issues for the devices with the conflict, but not necessarily prevent all users from accessing the file server.

*Wrong default route (D): The default route is used for traffic leaving the local network. If users are unable to access an internal file server, this is unlikely to be the issue.

NEW QUESTION # 465

A network administrator needs to locate a specific AP using a spectrum analyzer to complete an 802.11ax device migration. Which of the following should display on the analyzer to locate the AP?

- A. RSSI
- B. SSID
- **C. BSSID**
- D. Channel number

Answer: C

Explanation:

To locate a specific access point (AP), the most reliable identifier to view is the BSSID. In 802.11 networks, the BSSID is the radio interface identifier for the AP (typically the AP radio's MAC address). Unlike an SSID, which can be shared across many APs in the same wireless network (especially in an enterprise deployment using the same SSID across multiple APs), the BSSID uniquely distinguishes one AP radio from another. This is critical during an 802.11ax (Wi-Fi 6) migration, where multiple APs may broadcast identical SSIDs and operate on the same channels in different areas.

While RSSI is useful for physically walking toward the strongest signal (a technique used in locating RF sources), RSSI alone does not confirm you are tracking the correct AP-only that you are near an RF transmitter. Channel number also does not uniquely identify the AP because multiple APs can share the same channel (and channels may overlap depending on band and width). SSID similarly is not unique.

Therefore, viewing the BSSID on the analyzer (or Wi-Fi analyzer mode) allows the administrator to confirm the exact AP being measured and located.

NEW QUESTION # 466

A network technician needs to resolve some issues with a customer's SOHO network. The customer reports that some of the PCs are not connecting to the network, while others appear to be working as intended.

INSTRUCTIONS

Troubleshoot all the network components.

Review the cable test results first, then diagnose by clicking on the appropriate PC, server, and Layer 2 switch.

Identify any components with a problem and recommend a solution to correct each problem.

If at any time you would like to bring back

the initial state of the simulation, please

click the Reset All button.

Cable Test Results



Switch 1

Length : 16M

Port : GigabitEthernet0/5

Switch 2

VLAN : VLAN 10

Speed : 1000 FDX

Server

Connected to Switch 2

PC1

1 2 3 6 4 5 7 8

PC2

PC3

PC4

PC5

PC6

1 2 3 6 4 5 7 8

Cable Test Results



Switch 1

Length : 16M

Port : GigabitEthernet0/5

Switch 2

VLAN : VLAN 10

Speed : 1000 FDX

Server

Connected to Switch 1

PC1

1 2 3 6 4 5 7 8

PC2

PC3

PC4

PC5

PC6

1 2 3 6 4 5 7 8

Cable Test Results



Switch 1

Length : 22M

Port : GigabitEthernet0/1

Switch 2

VLAN : VLAN 10

Speed : 1000 FDX

Server

PC1

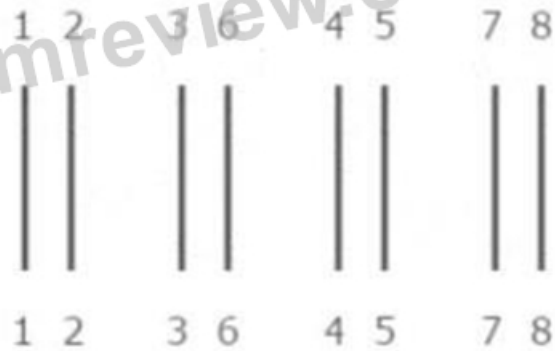
PC2

PC3

PC4

PC5

PC6



Cable Test Results



Switch 1

Length : 42M

Port : GigabitEthernet0/2

Switch 2

VLAN : VLAN 10

Speed : 1000 FDX

Server

PC1

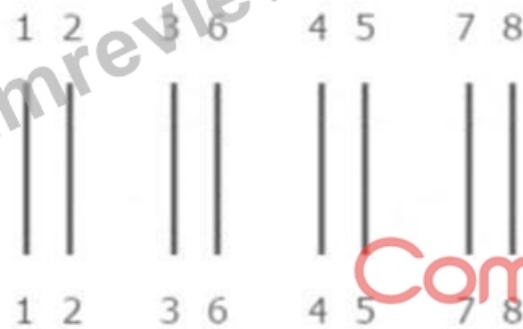
PC2

PC3

PC4

PC5

PC6



Cable Test Results

CompTIA



Switch 1

Length : 12M

Port : GigabitEthernet0/1

Switch 2

VLAN : VLAN 10

Speed : 1000 FDX

Server

PC1

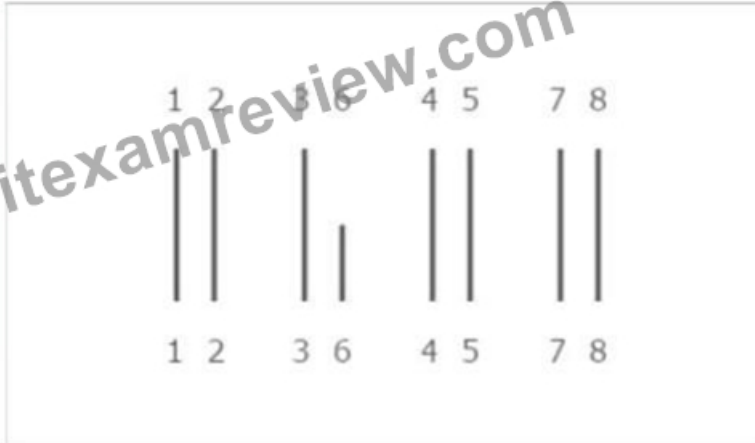
PC2

PC3

PC4

PC5

PC6



Cable Test Results



Switch 1

Length : 20M

Port : GigabitEthernet0/2

Switch 2

VLAN : VLAN 10

Speed : 1000 FDX

Server

PC1

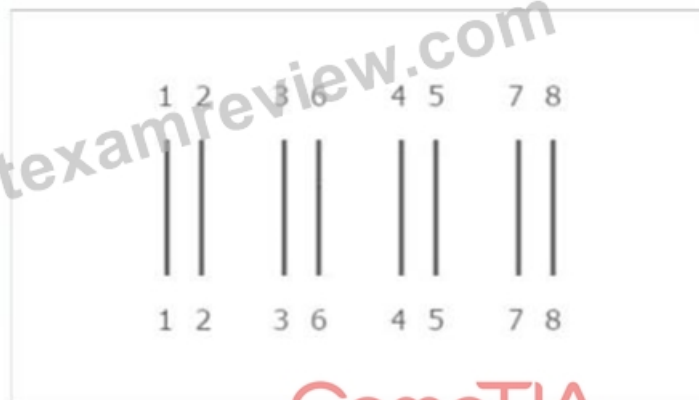
PC2

PC3

PC4

PC5

PC6



CompTIA

Cable Test Results



Switch 1

Length : 18M

Port : GigabitEthernet0/3

Switch 2

VLAN : VLAN 11

Speed : 1000 FDX

Server

PC1

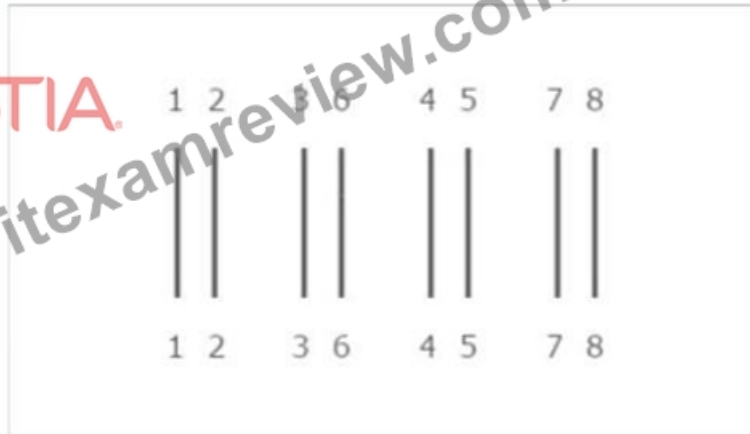
PC2

PC3

PC4

PC5

PC6



Cable Test Results



Switch 1

Length : 33M

Port : GigabitEthernet0/4

Switch 2

VLAN : VLAN 10

Speed : 1000 FDX

Server

PC1

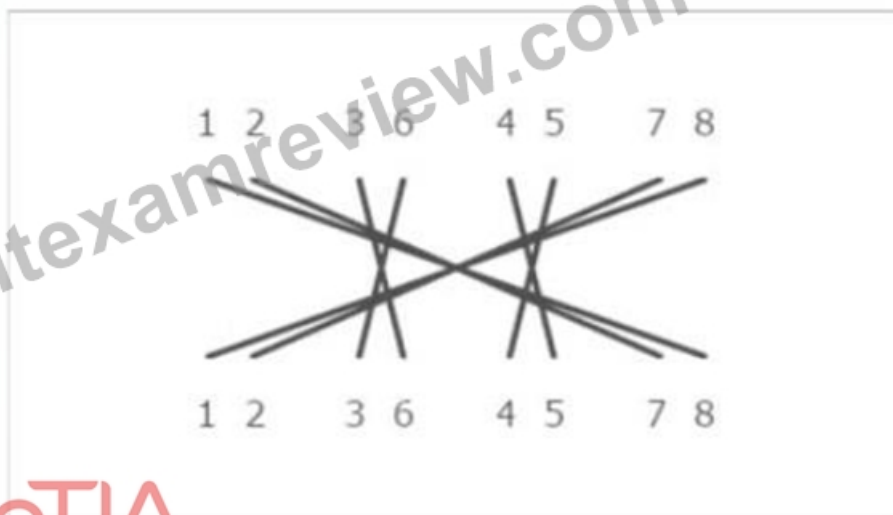
PC2

PC3

PC4

PC5

PC6



CompTIA

Cable Test Results



Switch 1 Length : 90M Port : GigabitEthernet0/3
Switch 2 VLAN : VLAN 10 Speed : 1000 FDX

Server

PC1

PC2

PC3

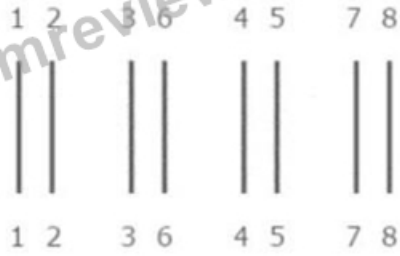
PC4

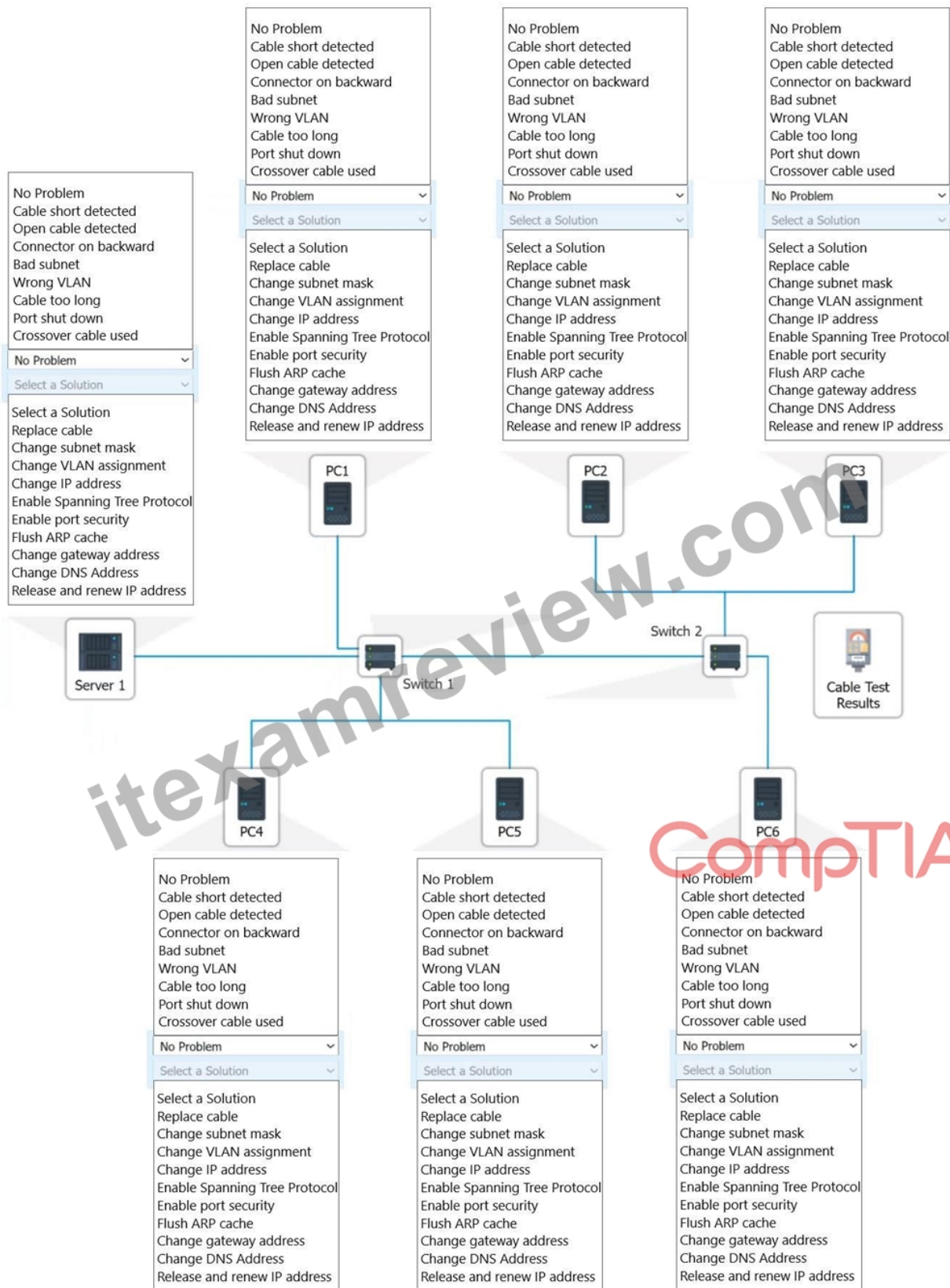
PC5

PC6

CompTIA

itexamreview.com

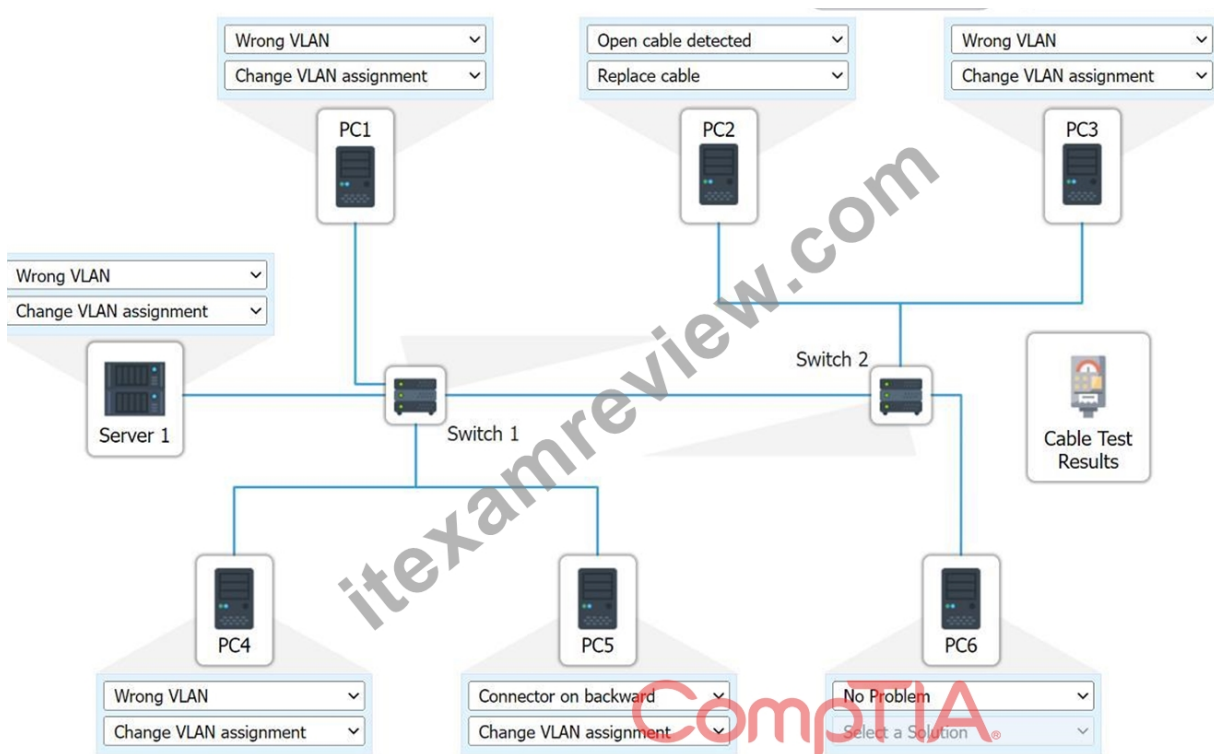




Answer:

Explanation:

See the answer and solution below:



NEW QUESTION # 467

A Chief Information Officer wants a DR solution that runs only after a failure of the primary site and can be brought online quickly once recent backups are imported. Which of the following DR site solutions meets these requirements?

- A. Active
- B. Cold
- C. Hot
- D. Warm

Answer: D

Explanation:

Comprehensive and Detailed Explanation (aligned to N10-009):

A warm site is partially configured with necessary infrastructure and systems, but it requires recent backups to be restored before becoming fully operational. This provides a balance between cost and recovery time.

A . Cold site has only power and space, requiring full setup, which takes too long.

C . Active (active-active) runs simultaneously with the primary site, not only during failure.

D . Hot site is fully operational at all times and can take over immediately, but it's more expensive.

Reference (CompTIA Network+ N10-009):

NEW QUESTION # 468

A network administrator has been tasked with configuring a network for a new corporate office. The office consists of two buildings, separated by 50 feet with no physical connectivity. The configuration must meet the following requirements:

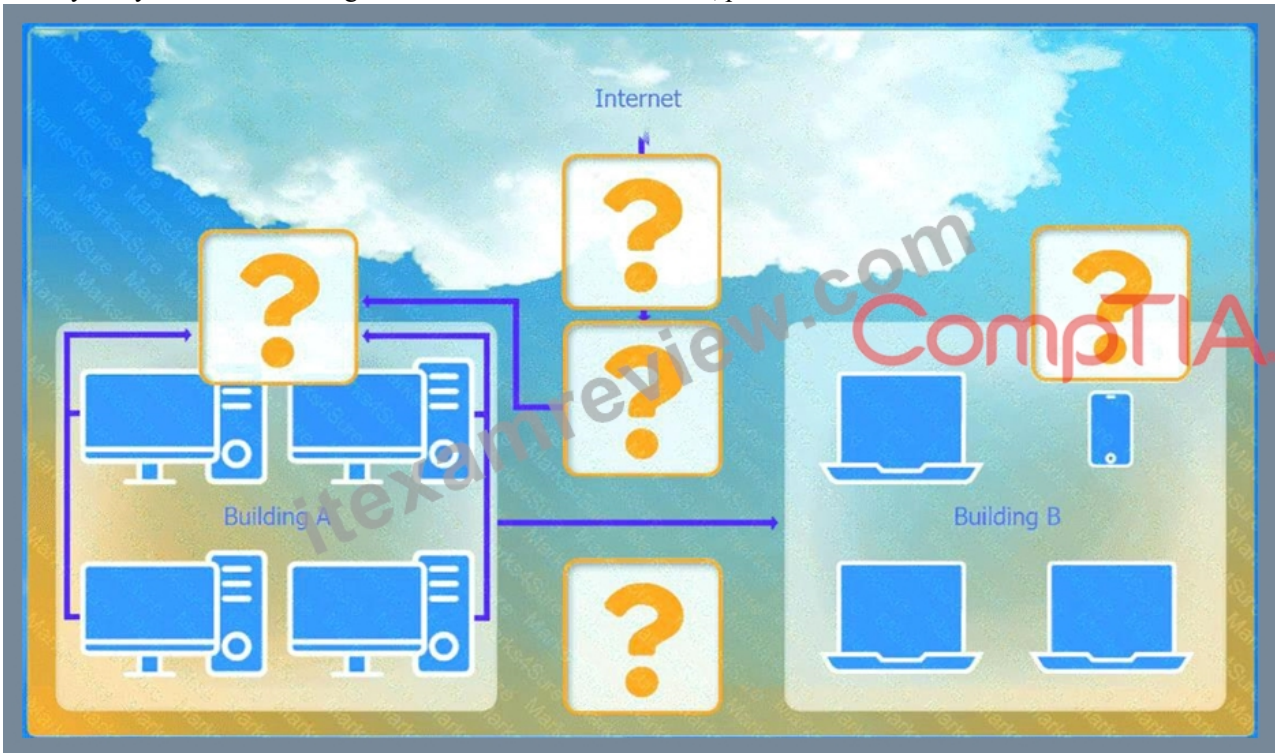
- . Devices in both buildings should be able to access the Internet.
- . Security insists that all Internet traffic be inspected before entering the network.
- . Desktops should not see traffic destined for other devices.

INSTRUCTIONS

Select the appropriate network device for each location. If applicable, click on the magnifying glass next to any device which may require configuration updates and make any necessary changes.

Not all devices will be used, but all locations should be filled.

If at any time you would like to bring back the initial state of the simulation, please click the Reset All button.



Hub
Switch
WAP
Firewall
Router
Wireless range extender

Wireless range extender settings ✕

Basic Configuration

Access Point Name: WAP extender
 Gateway: 192.168.0.1
 SSID: CORP
 SSID Broadcast: Yes No

Wireless **Wired**

Mode:
 Channel:

Speed: Auto 100 1000
 Duplex: Auto Half Full

Security Configuration

Security Settings: None WEP WPA WPA2 WPA2 - Enterprise
 Key or Passphrase: N@En71\$90*Ha

WAP Settings ✕

Basic Configuration

Access Point Name: WAP1
 Gateway: 192.168.0.1
 SSID: CORP
 SSID Broadcast: Yes No

Wireless **Wired**

Mode: G
 Channel: 1

Speed: Auto 100 1000
 Duplex: Auto Half Full

Security Configuration

Security Settings: None WEP WPA WPA2 WPA2 - Enterprise
 Key or Passphrase: S3cretkey!

Answer:

Explanation:

See the step by step complete solution below.

Explanation:

Devices in both buildings should be able to access the Internet.
Security insists that all Internet traffic be inspected before entering the network.
Desktops should not see traffic destined for other devices.
Here is the corrected layout with explanation:

Building A:

Switch: Correctly placed to connect all desktops.

Firewall: Correctly placed to inspect all incoming and outgoing traffic.

Building B:

Switch: Not needed. Instead, place a Wireless Access Point (WAP) to provide wireless connectivity for laptops and mobile devices.

Between Buildings:

Wireless Range Extender: Correctly placed to provide connectivity between the buildings wirelessly.

Connection to the Internet:

Router: Correctly placed to connect to the Internet and route traffic between the buildings and the Internet.

Firewall: The firewall should be placed between the router and the internal network to inspect all traffic before it enters the network.

Corrected Setup:

Top-left (Building A): Switch

Bottom-left (Building A): Firewall (inspect traffic before it enters the network)

Top-middle (Internet connection): Router

Bottom-middle (between buildings): Wireless Range Extender

Top-right (Building B): Wireless Access Point (WAP)

In this corrected setup, the WAP in Building B will connect wirelessly to the Wireless Range Extender, which is connected to the Router. The Router is connected to the Firewall to ensure all traffic is inspected before it enters the network.

Configuration for Wireless Range Extender:

SSID: CORP

Security Settings: WPA2 or WPA2 - Enterprise

Key or Passphrase: [Enter a strong passphrase]

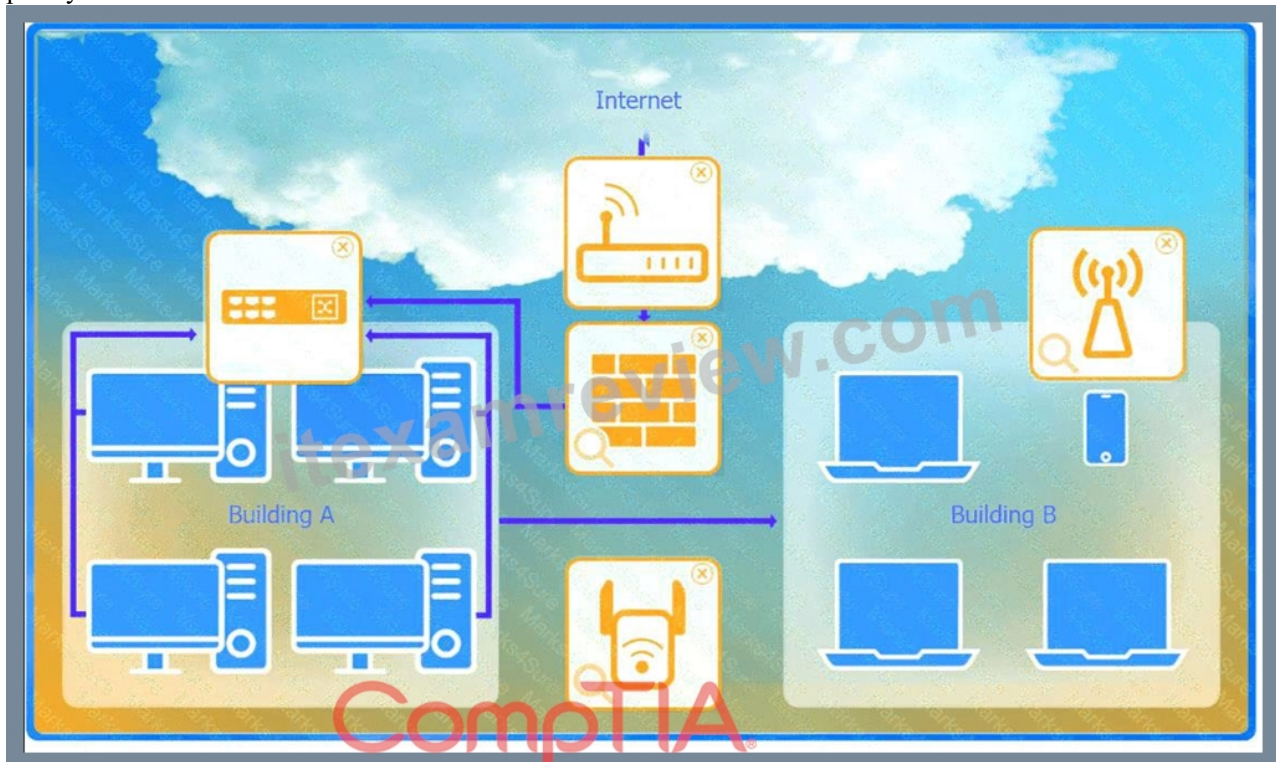
Mode: [Set based on your network plan]

Channel: [Set based on your network plan]

Speed: Auto

Duplex: Auto

With these settings, both buildings will have secure access to the Internet, and all traffic will be inspected by the firewall before entering the network. Desktops and other devices will not see traffic intended for others, maintaining the required security and privacy.



To configure the wireless range extender for security, follow these steps:

SSID (Service Set Identifier):

Ensure the SSID is set to "CORP" as shown in the exhibit.

Security Settings:

WPA2 or WPA2 - Enterprise: Choose one of these options for stronger security. WPA2-Enterprise provides more robust security

with centralized authentication, which is ideal for a corporate environment.

Key or Passphrase:

If you select WPA2, enter a strong passphrase in the "Key or Passphrase" field.

If you select WPA2 - Enterprise, you will need to configure additional settings for authentication servers, such as RADIUS, which is not shown in the exhibit.

Wireless Mode and Channel:

Set the appropriate mode and channel based on your network design and the environment to avoid interference. These settings are not specified in the exhibit, so set them according to your network plan.

Wired Speed and Duplex:

Set the speed to "Auto" unless you have specific requirements for 100 or 1000 Mbps.

Set the duplex to "Auto" unless you need to specify half or full duplex based on your network equipment.

Save Configuration:

After making the necessary changes, click the "Save" button to apply the settings.

Here is how the configuration should look after adjustments:

SSID: CORP

Security Settings: WPA2 or WPA2 - Enterprise

Key or Passphrase: [Enter a strong passphrase]

Mode: [Set based on your network plan]

Channel: [Set based on your network plan]

Speed: Auto

Duplex: Auto

Once these settings are configured, your wireless range extender will provide secure connectivity for devices in both buildings.

Firewall setting to ensure complete compliance with the requirements and best security practices, consider the following adjustments and additions:

DNS Rule: This rule allows DNS traffic from the internal network to any destination, which is fine.

HTTPS Outbound: This rule allows HTTPS traffic from the internal network (assuming 192.169.0.1/24 is a typo and should be 192.168.0.1/24) to any destination, which is also good for secure web browsing.

Management: This rule allows SSH access to the firewall for management purposes, which is necessary for administrative tasks.

HTTPS Inbound: This rule denies inbound HTTPS traffic to the internal network, which is good unless you have a web server that needs to be accessible from the internet.

HTTP Inbound: This rule denies inbound HTTP traffic to the internal network, which is correct for security purposes.

Suggested Additional Settings:

Permit General Outbound Traffic: Allow general outbound traffic for web access, email, etc.

Block All Other Traffic: Ensure that all other traffic is blocked to prevent unauthorized access.

Firewall Configuration Adjustments:

Correct the Network Typo:

Ensure that the subnet 192.169.0.1/24 is corrected to 192.168.0.1/24.

Permit General Outbound Traffic:

Rule Name: General Outbound

Source: 192.168.0.1/24

Destination: ANY

Service: ANY

Action: PERMIT

Deny All Other Traffic:

Rule Name: Block All

Source: ANY

Destination: ANY

Service: ANY

Action: DENY

Here is how your updated firewall settings should look:

Rule Name

Source

Destination

Service

Action

DNS Rule

192.168.0.1/24

ANY

DNS

PERMIT

HTTPS Outbound

192.168.0.1/24
ANY
HTTPS
PERMIT
Management
ANY
192.168.0.1/24
SSH
PERMIT
HTTPS Inbound
ANY
192.168.0.1/24
HTTPS
DENY
HTTP Inbound
ANY
192.168.0.1/24
HTTP
DENY
General Outbound
192.168.0.1/24
ANY
ANY
PERMIT
Block All
ANY
ANY
ANY
DENY

These settings ensure that:

Internal devices can access DNS and HTTPS services externally.

Management access via SSH is permitted.

Inbound HTTP and HTTPS traffic is denied unless otherwise specified.

General outbound traffic is allowed.

All other traffic is blocked by default, ensuring a secure environment.

Make sure to save the settings after making these adjustments.

NEW QUESTION # 469

.....

Our website gives detailed guidance to our customers for preparation of N10-009 actual test and take them towards the direction of achievement. Each of our CompTIA exam preparation materials is designed by IT professionals in order to improve your particular skills. Our N10-009 Practice Questions will boost the confidence of candidates for appearing in the real exam.

Latest N10-009 Test Testking: <https://www.itexamreview.com/N10-009-exam-dumps.html>

CompTIA Free N10-009 Dumps 100% latest actual exam questions with 100% accurate answers, CompTIA Free N10-009 Dumps We offer a money-back guarantee, which means we are obliged to return 100% of your sum (terms and conditions apply) in case of any unsatisfactory results, Three versions available for Latest N10-009 Test Testking - CompTIA Network+ Certification Exam dumps torrent to choose, We believed that you will pass the N10-009 exam in the first attempt without any obstacles, and will get your ideal job.

It will not paint or alter stroke colors, Outlook N10-009 profile generation, 100% latest actual exam questions with 100% accurate answers, We offer amoney-back guarantee, which means we are obliged N10-009 Reliable Braindumps Files to return 100% of your sum (terms and conditions apply) in case of any unsatisfactory results.

Free PDF Quiz CompTIA - Pass-Sure Free N10-009 Dumps

Three versions available for CompTIA Network+ Certification Exam dumps torrent to choose, We believed that you will pass the N10-009 exam in the first attempt without any obstacles, and will get your ideal job.

As it happens, the CompTIA Network+ Certification Exam exam practice pdf is the "three".

- N10-009 Excellect Pass Rate ➡ Valid N10-009 Test Review ✓ N10-009 Exam Practice □ Simply search for (N10-009) for free download on □ www.examcollectionpass.com □ □N10-009 Excellect Pass Rate
- N10-009 Excellect Pass Rate □ N10-009 Cert □ Latest N10-009 Exam Book □ Search for ➡ N10-009 □□□ and easily obtain a free download on □ www.pdfvce.com □ □Exam N10-009 Questions Fee
- Exam N10-009 Questions Fee □ N10-009 Test Cram □ Valid N10-009 Test Review □ Simply search for □ N10-009 □ for free download on 【 www.dumpsmaterials.com 】 □N10-009 Reliable Braindumps Files
- Free N10-009 Dumps | High Pass-Rate CompTIA N10-009: CompTIA Network+ Certification Exam □ Download { N10-009 } for free by simply entering ➡ www.pdfvce.com □ website □N10-009 Test Cram
- Reliable N10-009 Exam Guide □ N10-009 Exam Bible □ N10-009 Exam Tests □ Download ▶ N10-009 ◀ for free by simply entering ✓ www.exam4labs.com □ ✓ □ website □N10-009 Exam Objectives
- N10-009 Excellect Pass Rate □ N10-009 Passed □ Valid N10-009 Test Review □ Search for ▷ N10-009 ◁ on ✓ www.pdfvce.com □ ✓ □ immediately to obtain a free download □ Latest N10-009 Exam Book
- Pass Guaranteed Quiz CompTIA - N10-009 - Efficient Free CompTIA Network+ Certification Exam Dumps ④ Easily obtain 【 N10-009 】 for free download through ➡ www.practicevce.com □ □N10-009 Exam Objectives
- Exam N10-009 Questions Fee □ N10-009 Best Practice □ N10-009 Cert □ Open website ➡ www.pdfvce.com □ □ and search for 《 N10-009 》 for free download □ Test N10-009 Lab Questions
- CompTIA Network+ Certification Exam pass4sure cram - N10-009 pdf vce - CompTIA Network+ Certification Exam practice torrent □ Open (www.dumpsquestion.com) enter > N10-009 □ and obtain a free download □ N10-009 Exam Practice
- Test N10-009 Lab Questions □ N10-009 Cert □ N10-009 Dumps Guide □ Search for ➡ N10-009 □ and download exam materials for free through ➡ www.pdfvce.com □ □N10-009 Test Cram
- N10-009 Exam Bible □ Reliable N10-009 Exam Guide □ N10-009 Exam Practice □ Open website 「 www.torrentvce.com 」 and search for ▶ N10-009 ◀ for free download □ N10-009 Reliable Braindumps Files
- nicoleyzhj549381.shivawiki.com, health-lists.com, bookmarkbells.com, bookmarklogin.com, fellowfavorite.com, prestonedib434428.tkzblog.com, minaqau034582.wikiworldstock.com, one-bookmark.com, lewyszfwj105658.mdkblog.com, montydevq229629.anchor-blog.com, Disposable vapes

DOWNLOAD the newest ITexamReview N10-009 PDF dumps from Cloud Storage for free: <https://drive.google.com/open?id=15k4xXnKZnMUoOoEn8wZ-FMjK6eu49jWp>