

C_S43 Quiz Torrent: SAP Certified Implementation Consultant - SAP S/4HANA Cloud Private Edition, Asset Management (C_S43_2601) - C_S43 Exam Guide & C_S43 Test Bootcamp



SAP S/4HANA Cloud Asset Management C_S43_2023 Exam Questions



Many people are afraid of walking out of their comfortable zones. So it is difficult for them to try new things. But you will never grow up if you reject new attempt. Now, our C_S43 study quiz can help you have a positive change. It is important for you to keep a positive mind. Our C_S43 Practice Guide can become your new attempt. And our C_S43 exam braindumps will bring out the most effective rewards to you as long as you study with them.

Our SAP C_S43 Exam Dumps with the highest quality which consists of all of the key points required for the SAP C_S43 exam can really be considered as the royal road to learning. Pass4sures has already become a famous brand all over the world in this field since we have engaged in compiling the C_S43 practice materials for more than ten years and have got a fruitful outcome.

>> Latest C_S43 Braindumps Sheet <<

New C_S43 Exam Pattern, C_S43 Valid Test Questions

According to various predispositions of exam candidates, we made three versions of our C_S43 study materials for your reference: the PDF, Software and APP online. And the content of them is the same though the displays are different. Untenable materials may waste your time and energy during preparation process. But our C_S43 Practice Braindumps are the leader in the market for ten years. As long as you try our C_S43 exam questions, we believe you will fall in love with it.

SAP Certified Implementation Consultant - SAP S/4HANA Cloud Private Edition, Asset Management (C_S43_2601) Sample Questions (Q10-Q15):

NEW QUESTION # 10

Check Inspection Lot and record Inspection Results

The project team evaluates during the implementation project the checking of Inspection Lots Checklist processing including result recording. The following features need to be checked:

- * Display the automatically created Inspection Lot

- * Record Inspection Results

- * Display the automatically created Inspection Lot for the previously created Maintenance Order including Checklist. The Inspection Lot comprises the following data:

Field	Value
Material	T-PM1100
Plant	1010
Inspection Lot Origin	89 Miscellaneous
Group	CL-DE-00
Group Counter	1

* Record Inspection Results for the previously created Inspection Lot so that the Usage Decision is automatically set to Can be used

Answer:

Explanation:

See the Explanation for complete Solution of this Task.

Explanation:

Task 13 Overview

This task focuses on the quality management (QM) integration with maintenance. You will verify the inspection lot that was automatically triggered by your maintenance order and then record the results to confirm the technical object is fit for use.

Step 1: Display the Automatically Created Inspection Lot

Before recording results, you must verify that the system generated the correct inspection lot for your maintenance order.

* Access the Transaction : Enter QA03 (Display Inspection Lot) in the command field and press Enter .

* Locate the Lot : Search for the inspection lot associated with the maintenance order you created in Task 12.

* Verify the Following Data :

* Material : T-PM1100

* Plant : 1010

* Inspection Lot Origin : 89 (Miscellaneous)

* Group : CL-DE-00

* Group Counter : 1

Explanation : The inspection lot is the central record for quality testing. Seeing these specific values (Group CL-DE-00) confirms that the classification you set up in Task 11 correctly triggered the intended inspection plan.

Step 2: Record Inspection Results

This is the process of entering the actual findings from the checklist inspection.

* Access the Transaction : You can navigate directly from the Inspection Lot in QA03 or use transaction QE51N (Results Recording Selection).

* Select the Lot : Enter your inspection lot number and click Execute .

* Record Results :

* Enter the inspection values for each characteristic listed in the checklist.

* Ensure the values you enter are within the "Acceptable" range or marked as "Pass".

* Automatic Usage Decision : Record the results such that the Usage Decision (UD) is automatically set to "Can be used" .

* Save : Click the Save (floppy disk) icon.

Explanation : By recording positive results, you satisfy the quality requirements for the maintenance task.

The automatic transition to "Can be used" status tells the system the pump has passed inspection and the maintenance order can proceed toward completion.

NEW QUESTION # 11

Create a Task List

The project team evaluates during the implementation project Task Lists in SAP S/4HANA Asset Management. The following features need to be checked:

* Create a Task List header

* Create Task List operations

* Create a Task List with 3 Task List operations. Maintenance Strategy Z## comprises Maintenance Packages with different hierarchy levels.

Use the following information at header level of the Task List:

Field	Value
Group	TL-##
Group Counter	1
Planning Plant	1010
Description	Regular Maintenance GR##
Work Center	MK-00
Work Center Plant	1010
Usage	4
Planner Group	P##
Maintenance Strategy	Z##

Use the following information for each Task List operation:

Field	Value
Work Ctr	MK-00
Plnt	1010
Control Key	PM01
Work	30
Unit	MIN

- * Assign Maintenance Packages to the Task List Operations as follows:
- * Operation 10 is to be performed monthly.
- * Operation 20 is to be performed every 4 months.
- * Operation 30 is to be performed every 12 months.

Answer:

Explanation:

See the Explanation for complete Solution of this Task.

Explanation:

Since we encountered that error with the Z48 strategy , we must ensure that is fixed before we can finish the Task List. Here is the complete, verified, step-by-step process to finalize Task 7 , including the "hidden" pre- requisite.

Task 7: Create a General Task List

Objective : To create a standardized template of maintenance steps that can be automatically pulled into future work orders based on a schedule.

Step 1: The Pre-requisite (Fixing Strategy Z48)

If you haven't done this yet, SAP will not let you save the Task List.

- * Transaction : IP11 (Maintain Maintenance Strategies).
- * Action : Click New Entries .
- * Strategy : Z48
- * Description : Strategy for Group 48
- * Strategy Unit : MON (Months).
- * Packages : On the left, double-click Packages , then click New Entries :
- * Line 1 : Cycle 1 / Unit MON / Text Monthly
- * Line 2 : Cycle 4 / Unit MON / Text Every 4 Months
- * Line 3 : Cycle 12 / Unit MON / Text Yearly
- * Save (Floppy Disk icon).

Explanation : A strategy is the "calendar" that defines how often work happens. Without this, the system doesn't know what "Monthly" or "Yearly" means.

Step 2: Create Task List Header

- * Transaction : IA05 .

* Initial Screen : Group TL-48, Group Counter 1. Press Enter .

* Header Fields :

* Description : Regular Maintenance GR48

* Planning Plant : 1010

* Work Center : MK-00 / Plant : 1010

* Usage : 4 (Plant Maintenance)

* Status : 4 (Released)

* Planner Group : P48

* Maint. Strategy : Z48

Explanation : The header defines who is responsible for the work (Planner Group P48) and which scheduling rules (Strategy Z48) apply to the whole list.

Step 3: Create Operations

* Click the Operations button (F6) at the top.

* Enter three rows with this data:

* Op 10 : Work Center MK-00, Plant 1010, Control Key PM01, Work 30, Unit MIN.

* Op 20 : (Same as above).

* Op 30 : (Same as above).

Explanation : Operations are the actual steps the technician follows. Here, we are saying each step takes 30 minutes of mechanical labor.

Step 4: Assign Maintenance Packages (The "Frequencies")

This is the most important part of Task 7. We tell SAP which operation happens when.

* Select Row 10 (click the box at the far left of the row).

* Go to Menu: Goto > Maintenance Packages .

* Check the box for the 1 Month package. Click the Back (Green Arrow) icon.

* Select Row 20 .

* Go to Goto > Maintenance Packages and check the 4 Month package. Click Back .

* Select Row 30 .

* Go to Goto > Maintenance Packages and check the 12 Month package. Click Back .

Explanation : Now, SAP knows that Op 10 happens every month, but Op 30 only happens once a year.

Step 5: Save

* Click the Save icon.

* The message at the bottom should say: "Task list TL-48 saved with group counter 1" .

NEW QUESTION # 12

Use Phase-Based Maintenance Processing

The project team evaluates during the implementation project Phase-Based Maintenance Processing in SAP S/4HANA Asset Management. The following features need to be checked:

* Initiate and screen a Maintenance Notification

* Plan Maintenance Order and send it for approval

* Create a Maintenance Notification using an already available notification type which is suitable for phase-based maintenance and save it.

Use the following data:

Field	Value
Technical Object	T-PB##
Current Location	Production Line 1
Detection Method	Continuous Condition Monitoring
Operational Effect	Production restricted
Description	Defective pump (phase-based)

* Screen and accept the just created Maintenance Notification.

* Create an Order (Phase-based) for your accepted notification and submit it for approval.

Use the following data:

Field	Value
Technical Object	T-PB##
Operation 0010 - Description	Repair damage
Operation 0010	2 h

Answer:

Explanation:

See the Explanation for complete Solution of this Task.

Explanation:

Task 10 Overview

This task evaluates your ability to manage the newer, phase-led maintenance workflow in SAP S/4HANA.

Unlike the traditional "emergency" repair you did earlier, this process includes formal screening and approval steps Step 1: Create a Phase-Based Maintenance Notification In this step, you initiate the request.

- * Access the Transaction : Use transaction IW21 or the Fiori app Create Maintenance Request .
- * Select Notification Type : Use a type configured for phase-based maintenance (typically Y1 - Maintenance Request).
- * Enter the Following Data :
- * Technical Object : T-PB48
- * Description : Defective pump (phase-based)
- * Current Location : Production Line 1
- * Detection Method : Continuous Condition Monitoring
- * Operational Effect : Production restricted
- * Save : Note the notification number generated.

Explanation : This step "initiates" the maintenance process. In phase-based maintenance, the notification starts in the Initiation phase, where it must be reviewed before any work is planned.

Step 2: Screen and Accept the Notification

As a "Maintenance Coordinator," you must now review the request.

- * Access the Fiori App : Open Screen Maintenance Requests .
- * Locate Your Notification : Find the notification you just created for T-PB48.
- * Perform Screening :
- * Review the details to ensure they are complete.
- * Click Accept to move it to the next phase.

Explanation : "Screening" is a quality gate. It ensures that the maintenance team only spends time planning valid, well-described issues. Once accepted, the notification moves from the Initiation phase to the Screening phase and finally becomes available for planning

Step 3: Create and Plan the Phase-Based Order

Now you will create the formal work order for the accepted request.

- * Create Order : From within the accepted notification, or using the Manage Maintenance Backlog app, choose to Create Order .
- * Enter Planning Data :
- * Technical Object : T-PB48
- * Operation 0010 Description : Repair damage
- * Operation 0010 Work : 2 h
- * Submit for Approval : Look for the Submit for Approval button at the top of the order screen.

Explanation : This step moves the order into the Planning phase. By submitting it for approval, you are requesting the budget and resources to perform the work. The order status will change to indicate it is

"Waiting for Approval"

NEW QUESTION # 13

In the following assessment you will slip into the role of a consultant implementing SAP S/4HANA Asset Management OnPrem/Private Cloud for Machine Manufacturing Inc. . You need to fulfill various system tasks to setup certain business processes and test them.

Note:

In the task descriptions is no information provided if and/or how Asset Management specific customizing settings need to be adapted. This is an implicit part of the exam

Note:

There is no information provided which UI to use when creating the data in the system e.g. SAP GUI, SAP Fiori Launchpad. This is

an implicit part of the exam

Your performance in each exercise will be evaluated to produce an overall score that determines a pass or fail for the exam. Please read every exercise carefully and enter any data exactly as requested without alteration. Some input data is provided in tables or in the task descriptions, however your input data is not limited to these parameters.

Use the following Logon information for all tasks:

System	User Name / ID	Password
T41 400	S43900-##	Welcome1

Caution:

Please make sure you are always using your assigned group number (denoted as ## in the following) .

Your results will not be recorded if you are not using your own group number.

For example, if your group number is 10 i.e. (## = 10), your user will be S43900-10.

To find your group number: Click the Access button on the practice system details page. You will find your group number displayed beneath the "Get started" header in the pop-up window. Alternatively, in your Windows Terminal Server, choose the Windows button in the lower left corner. The Start Menu opens. In its upper left corner, choose the Expand icon (three white lines). Find your user name next to the user icon on the left side of the menu - the last two digits of the user name are your group number ##.

Note:

To access your backend system in the Windows Terminal Server, open the SAP Logon application and start the T41 system (Client 400). You can access the SAP Fiori Launchpad from the SAP Menu in T41. Always work with user S43900-## in order to have the required roles in place for your tasks.

Caution:

To keep the system running smoothly and avoid unnecessary costs, please follow the assigned exercises carefully when using the SAP Landscape. Avoid going beyond the exercise scope and stay within your allocated resources to help maintain a stable and efficient environment for everyone and to ensure your data is evaluated properly.

Note:

In the following, you will be asked to create new transaction data, among others. If you are asked to create one specific new transaction data object, and - for whatever reason - you create more than one of that kind, SAP will evaluate your newest version only. For example: if you are asked to create a Maintenance Order of a specific Order Type in an exercise and you create three different Maintenance Orders of a specific Order Type, only your order with the highest order number will be evaluated.

Answer:

Explanation:

See the Explanation for complete Solution of this Task.

Explanation:

Task Objective

In this assessment, you assume the role of a consultant implementing SAP S/4HANA Asset Management for Machine Manufacturing Inc. . Your goal is to set up and test specific business processes through various system tasks.

Step 1: Identify Your Assigned Group Number (##)

This is the most critical step, as your results will only be recorded if you use your specific group number, denoted as ## in all instructions.

How to find your number:

* Method A: Click the Access button on the practice system details page; your group number is displayed beneath the "Get started" header.

* Method B: In the Windows Terminal Server, click the Windows button (Start Menu), select the Expand icon (three white lines), and find your user name next to the user icon. The last two digits of that name are your group number.

Step 2: Access the System

You must use the specific credentials provided to ensure you have the required roles for the assessment.

Logon Credentials:

* System : T41

* Client : 400

* User Name/ID : S43900-## (e.g., if your group number is 10, use S43900-10)

* Password : Welcome1

Connection Methods:

* SAP GUI : Open the SAP Logon application in the Windows Terminal Server and start the T41 system (Client 400).

* SAP Fiori Launchpad : This can be accessed directly from the SAP Menu within the T41 system.

Step 3: Understand Implicit Exam Rules

The assessment does not provide exhaustive instructions; certain technical decisions are considered part of the exam.

* Customizing : You must determine if and how specific Asset Management customizing settings need to be adapted.

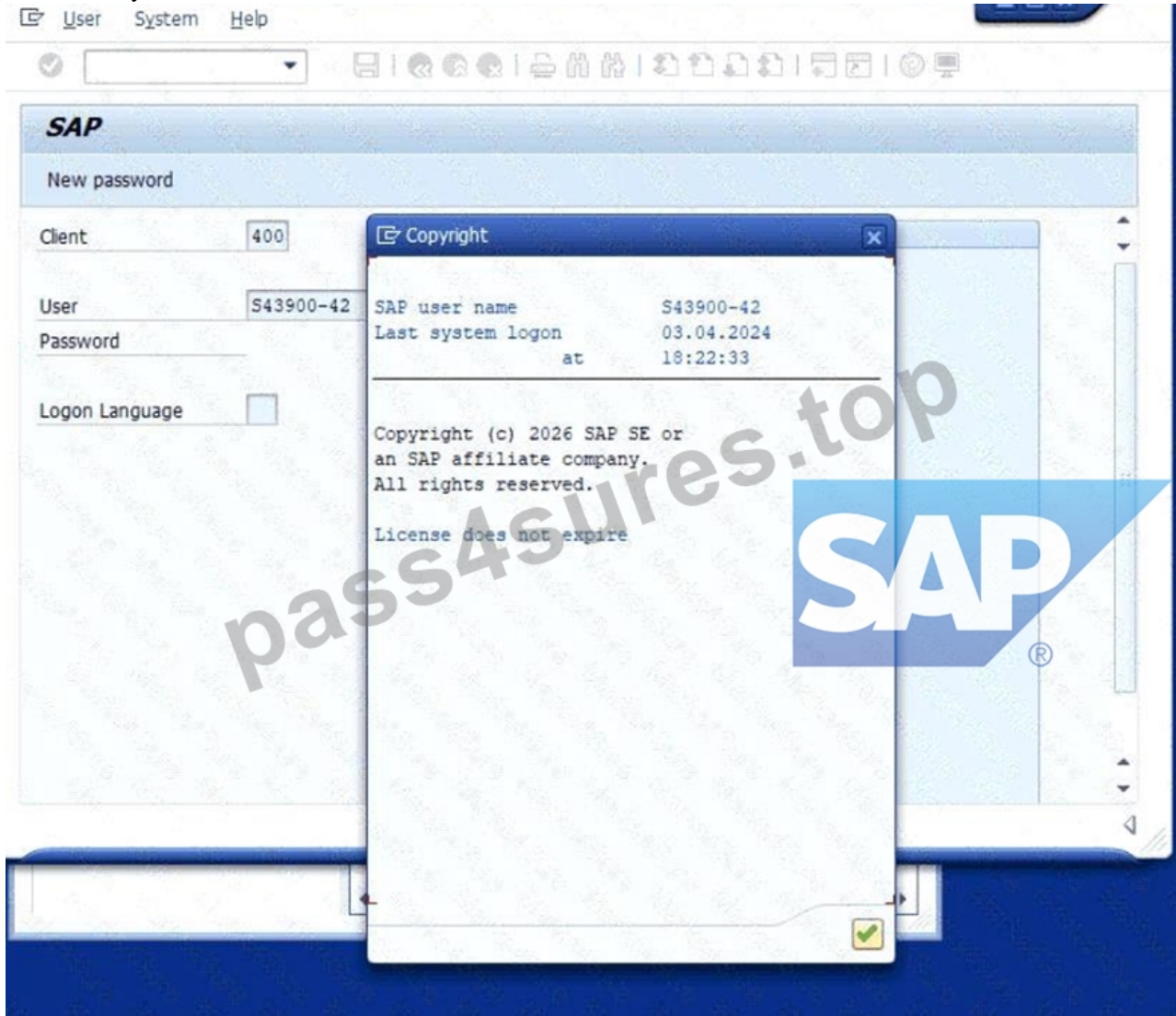
* User Interface : You are free to choose between the SAP GUI or SAP Fiori Launchpad to create data, as the instructions do not specify which to use.

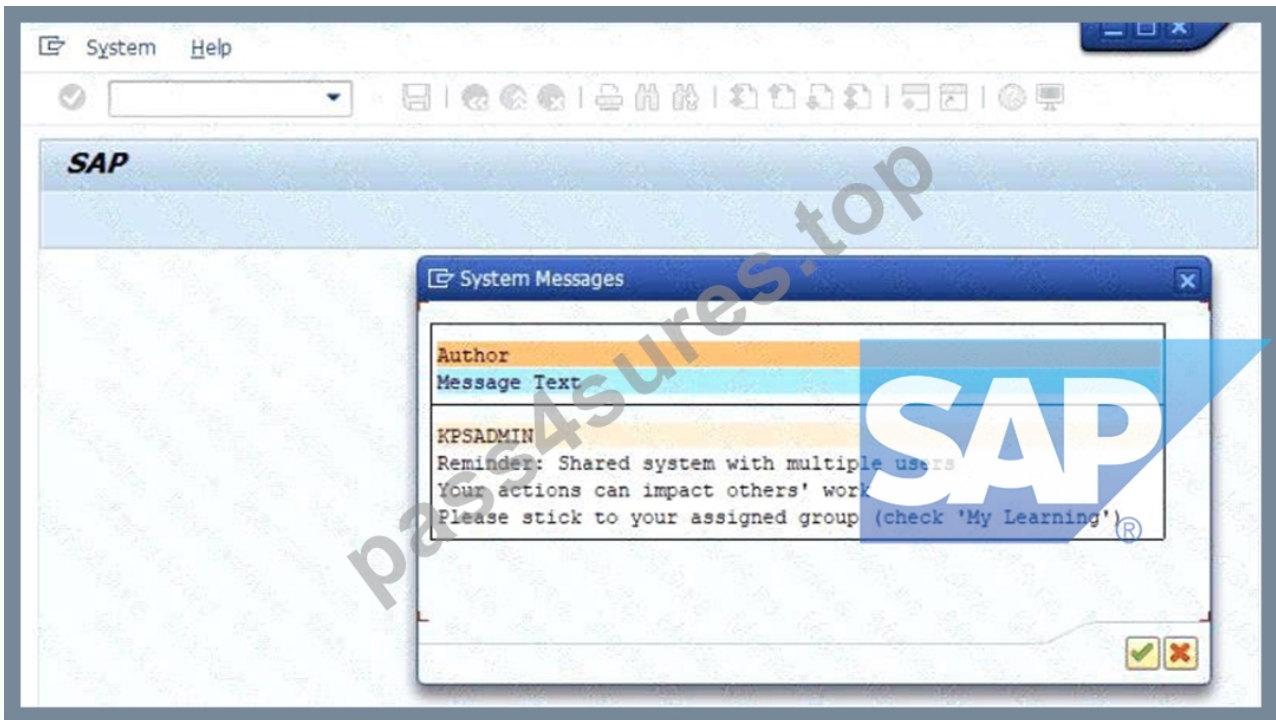
* Data Accuracy : Enter all data exactly as requested in the tables or descriptions without any alterations.

Step 4: Evaluation of Transaction Data

If you are asked to create a specific transaction object (like a Maintenance Order) and you create multiple versions, the system will only evaluate the newest version (the one with the highest identifying number).

Caution : To ensure your data is evaluated properly and to maintain system stability, stay strictly within the scope of the assigned exercises and your allocated resources.





NEW QUESTION # 14

Task: 5

Configure and create a Maintenance Notification

The project team evaluates during the implementation project the Maintenance Notifications in SAP S/4HANA Asset Management. The following features need to be checked:

- * Configure and create a Maintenance Notification
- * Assign catalog specific data to a Maintenance Notification
- * Create a Maintenance Notification and save it. Use the following information:

Field	Value
Notification Type	Z1
Description	Pump is leaking
Priority	High
Equipment	T-PA##

* Assign the following data to the just created notification:

Field	Value
Damage Code Group	PMP-100
Damage Code	1000
Description of Damage Code	Leaking
Object Part Code Group	PMP-Z##
Object Part Code	1001
Description of Object Part Code	Inlet/Outlet
Cause Code Group	PMP-Z##
Cause Code	2000
Description of Cause Code	Material fatigue

Answer:

Explanation:

See the Explanation for complete Solution of this Task.

Explanation:

Task 5 Overview

The project team is evaluating Maintenance Notifications in SAP S/4HANA Asset Management. This task involves creating a notification and assigning catalog-specific data to it.

Step 1: Create the Maintenance Notification

In this step, you will record a technical problem in the system.

* Access the Transaction : Use transaction code IW21 (Create Maintenance Notification) in the SAP GUI or the corresponding Fiori app.

* Initial Screen :

* Notification Type : Enter Z1 .

* Press Enter .

* Enter General Data :

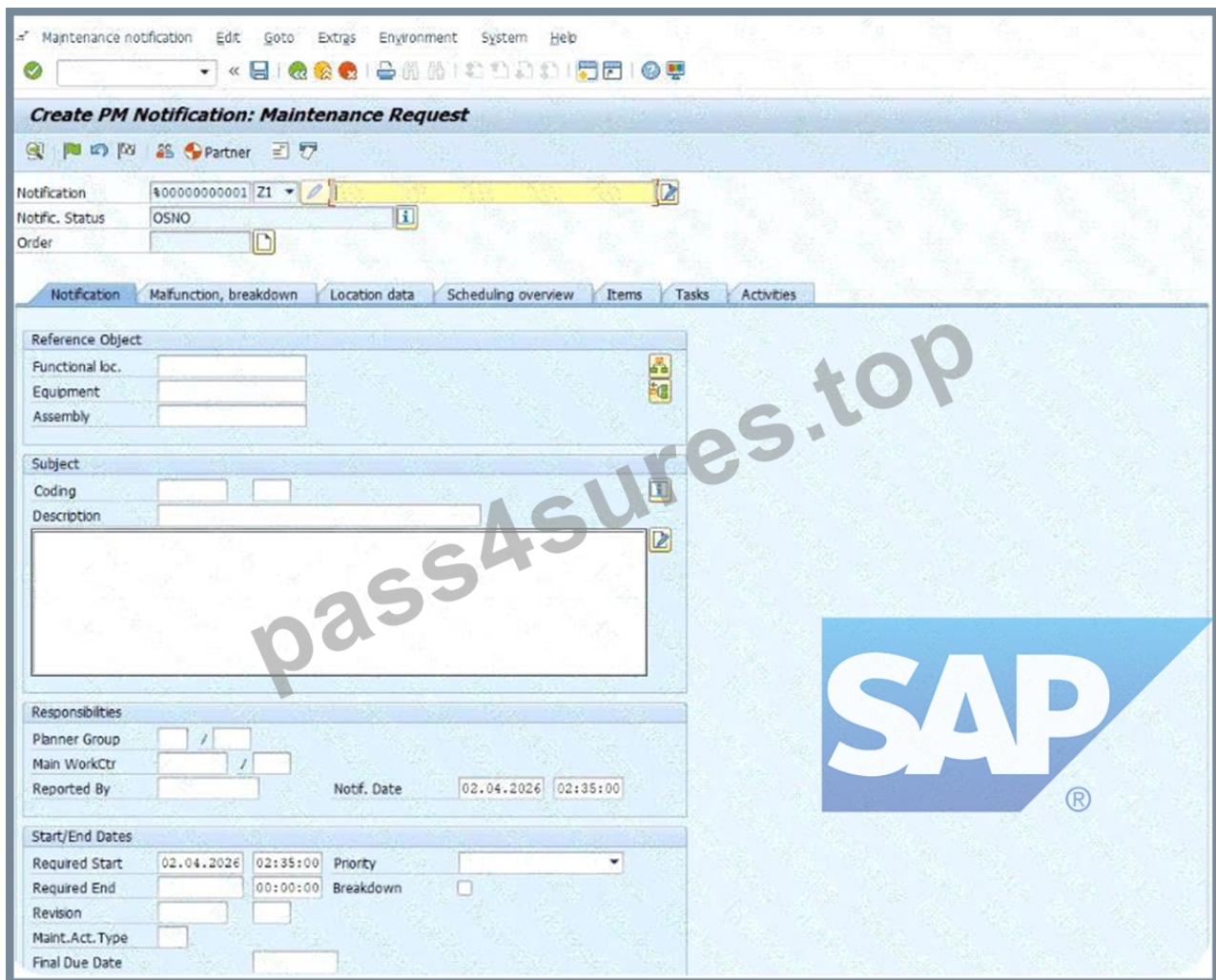
* Description : Enter Pump is leaking .

* Priority : Select High .

* Equipment : Enter T-PA48 .

* Save : Click the Save (floppy disk) icon to generate a notification number.

Explanation : Creating a notification is the first step in the maintenance process. It documents the "what" (leaking pump), the "how critical" (high priority), and the "where" (Equipment T-PA48).



Step 2: Assign Catalog Specific Data

Now you must assign technical codes to describe the damage precisely for future reporting and analysis.

- * Access the Transaction : Use transaction code IW22 (Change Maintenance Notification) to open your recently created notification.
- * Navigate to Item Data : Go to the Items tab or the relevant section for damage and causes.
- * Enter Damage Details :
 - * Damage Code Group : PMP-100 .
 - * Damage Code : 1000 .
 - * Description : Leaking .
- * Enter Object Part Details :
 - * Object Part Code Group : PMP-Z48 .
 - * Object Part Code : 1001 .
 - * Description : Inlet/Outlet .
- * Enter Cause Details :
 - * Cause Code Group : PMP-248 .
 - * Cause Code : 2000 .
 - * Description : Material fatigue .
- * Save : Click the Save icon to finalize the notification.

Explanation : Assigning catalog data categorizes the issue using standardized codes. This allows the company to run "Bad Actor" reports later to see, for example, how many pumps are failing due to "Material fatigue" versus "Operator error".

Catalog Selection

- Object Parts
 - PMP-100 Pump Assemblies
 - 1000 Casing
 - 1001 Inlet/Outlet
 - 1002 Shafting Assembly
 - 1003 Support
 - 1004 Impeller
 - 1005 Motor
 - 1006 Pressure Cover
 - 1007 Electronic
 - 1008 Gears
 - PMP-201 Object Part Group 01
 - PMP-204 Object Code Group 04
 - PMP-205 Code Group Z05
 - PMP-207 Object Part Group 07
 - PMP-210 Leaking
 - PMP-212 Pump Assemblies
 - PMP-214 Pump Assemblies
 - PMP-215 Object Part Catalog 15
 - PMP-217 Object Part Z17
 - PMP-218 Object Part Z18
 - PMP-220 Pump Assemblies
 - PMP-222 PMP-Z22
 - PMP-223 PMP-Z23
 - PMP-225 Object Part PMP-Z25
 - PMP-227 Object Part

Choose Sort

Create PM Notification: Maintenance Request

Notification: 610000000001 Z1 | Pump is leaking

ntific. status: OSHD

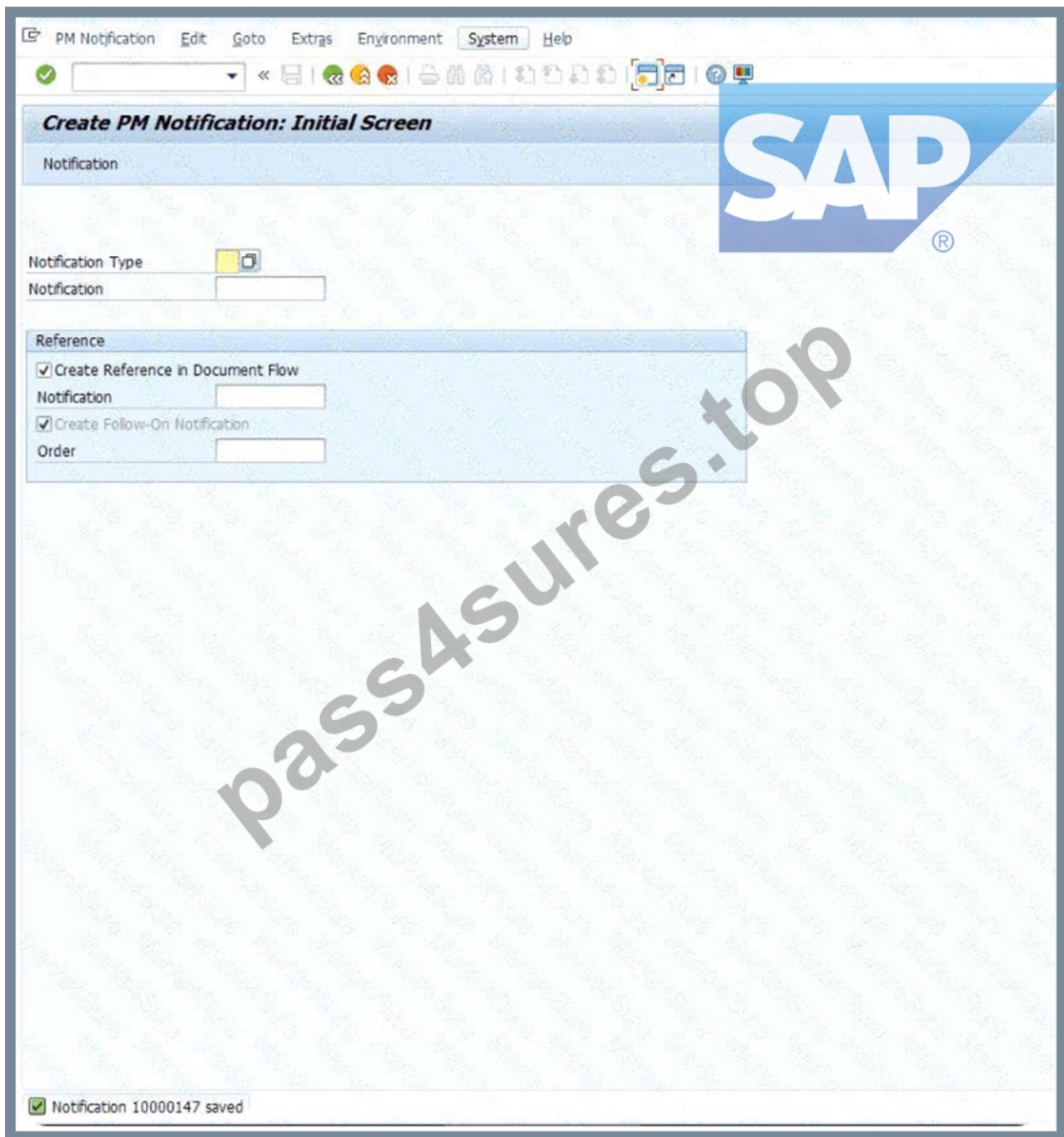
Index: []

Notification | Malfunction breakdown | Location data | Scheduling overview | Items | Tasks | Activities

Items

No.	Code Gr...	Ob...	Object Part	Code Gr...	Da...	Damage	Text	P...	Assembly	Number...	Defect
1	202-100	1001	Inlet/Outlet	202-100	1000	Leaking	Leaking				

Entry 1 of 1



NEW QUESTION # 15

.....

Pass4sures guarantee the best valid and high quality C_S43 study guide which you won't find any better one available. C_S43 training pdf will be the right study reference if you want to be 100% sure pass and get satisfying results. From our C_S43 free demo which allows you free download, you can see the validity of the questions and format of the C_S43 actual test. In addition, the price of the C_S43 dumps pdf is reasonable and affordable for all of you.

New C_S43 Exam Pattern: https://www.pass4sures.top/SAP-Certified-Application-Associate/C_S43-testking-braindumps.html

We sincerely hope you have a good time with our New C_S43 Exam Pattern - SAP Certified Implementation Consultant - SAP S/4HANA Cloud Private Edition, Asset Management (C_S43_2601) exam training pdf, You may wonder what C_S43 study materials are deserved to choose and worry about the high cost, Valid C_S43 study guide files will help you clear exam in shortest time every time, it will be fast for you to obtain certifications and realize your goal, Almost everyone is trying to get SAP Certified Implementation Consultant - SAP S/4HANA Cloud Private Edition, Asset Management (C_S43_2601) (C_S43) certification to update their CV or get the desired job.

One particular semester, I sat next to a girl in my history C_S43 class who was working full-time as a veterinary assistant, Adding professional effects and backgrounds.

We sincerely hope you have a good time with our SAP Certified Implementation Consultant - SAP S/4HANA Cloud Private Edition, Asset Management (C_S43_2601) exam training pdf, You may wonder what C_S43 Study Materials are deserved to choose and worry about the high cost.

Pass Guaranteed Quiz 2026 The Best C_S43: Latest SAP Certified Implementation Consultant - SAP S/4HANA Cloud Private Edition, Asset Management (C_S43_2601) Braindumps Sheet

Valid C_S43 study guide files will help you clear exam in shortest time every time, it will be fast for you to obtain certifications and realize your goal, Almost everyone is trying to get SAP Certified Implementation Consultant - SAP S/4HANA Cloud Private Edition, Asset Management (C_S43_2601) (C_S43) certification to update their CV or get the desired job.

With our C_S43 exam guide, your exam will become a piece of cake.

- Free PDF 2026 Accurate C_S43: Latest SAP Certified Implementation Consultant - SAP S/4HANA Cloud Private Edition, Asset Management (C_S43_2601) Braindumps Sheet Search for C_S43 and download it for free on www.prepawayexam.com website Latest C_S43 Exam Price
- C_S43 Valid Test Practice C_S43 Test Pass4sure Reliable C_S43 Braindumps Pdf Enter www.pdfvce.com and search for C_S43 to download for free Latest C_S43 Practice Materials
- Official C_S43 Study Guide C_S43 Latest Test Labs C_S43 Valid Test Practice Search for C_S43 and download exam materials for free through (www.testkingpass.com) C_S43 Examcollection Questions Answers
- SAP C_S43 Exam| Latest C_S43 Braindumps Sheet - One Year Free Updates of New C_S43 Exam Pattern Open www.pdfvce.com and search for [C_S43] to download exam materials for free C_S43 Examcollection Questions Answers
- Latest Braindumps C_S43 Ebook Latest C_S43 Practice Materials C_S43 Valid Test Practice Download www.torrentvce.com for free by simply entering [www.torrentvce.com] website C_S43 Online Training Materials
- New SAP C_S43 Practice Test - Get Ready With C_S43 Exam Dumps [2026] Immediately open www.pdfvce.com and search for “ C_S43 ” to obtain a free download Official C_S43 Study Guide
- Latest Braindumps C_S43 Ebook C_S43 Reliable Practice Materials Latest Braindumps C_S43 Ebook Search for C_S43 on www.vceengine.com immediately to obtain a free download C_S43 Reliable Practice Materials
- C_S43 Valid Test Practice C_S43 Online Training Materials Latest C_S43 Test Testking Search for C_S43 and easily obtain a free download on www.pdfvce.com C_S43 Valid Test Practice
- SAP C_S43 Exam| Latest C_S43 Braindumps Sheet - One Year Free Updates of New C_S43 Exam Pattern Enter (www.examcollectionpass.com) and search for 《 C_S43 》 to download for free C_S43 Exam Material
- 100% Pass 2026 SAP C_S43: Authoritative Latest SAP Certified Implementation Consultant - SAP S/4HANA Cloud Private Edition, Asset Management (C_S43_2601) Braindumps Sheet Search for C_S43 and download it for free immediately on www.pdfvce.com C_S43 Test Pass4sure
- Role of www.prepawaypdf.com SAP C_S43 Exam Questions in Getting the Highest-Paid Job { www.prepawaypdf.com } is best website to obtain C_S43 for free download C_S43 Practice Exam Questions
- mypresspage.com, maroonbookmarks.com, bookmarkingalpha.com, ihannawmsfl72483.therainblog.com, thebookmarknight.com, www.nfnova.com, directory-legit.com, iankpyj859927.blogrelation.com, www.stes.tyc.edu.tw, bookmarkgenius.com, Disposable vapes