

P_SAPEA_2023 New Dumps Ebook, Reliable P_SAPEA_2023 Test Labs



P.S. Free 2025 SAP P_SAPEA_2023 dumps are available on Google Drive shared by ValidExam: <https://drive.google.com/open?id=1WCuSrtCpZXCdKT5oA75ETgB2ipO1RuTy>

If you search reliable exam collection materials on the internet and find us, actually you have found the best products for your P_SAPEA_2023 certification exams. We are famous for the high pass rate of our P_SAPEA_2023 exam materials, that's why many old customers trust us and choose us directly before they have P_SAPEA_2023 Exams to attend. Before purchasing we can provide free PDF demo for your downloading so that you can know our product quality deeper and you can purchase P_SAPEA_2023 study guide clearly not only replying on your imagination.

SAP P_SAPEA_2023 Exam Syllabus Topics:

Topic	Details
Topic 1	<ul style="list-style-type: none">Application, Data, and Technical Architecture: This topic evaluates your knowledge about artifact content, stakeholders, best practices of SAP Reference Content, the SAP Integration Advisory Methodology, and SAP Clean Core principles and strategy.
Topic 2	<ul style="list-style-type: none">Business Architecture: The topic of business architecture discusses business capability mapping and end-to-end processes.
Topic 3	<ul style="list-style-type: none">SAP Enterprise Architecture Framework and toolset: The focal point of this topic is the company's business strategy. It also covers SAP Reference Architecture content, IT requirements, business requirements and (SAP) solution space, and SAP Enterprise Architecture-related artifacts.
Topic 4	<ul style="list-style-type: none">Architecture vision and roadmap: It focuses on developing the architecture vision and roadmap for a company. The topic also covers existing and future business models and capabilities and target business solution architecture roadmap.

>> P_SAPEA_2023 New Dumps Ebook <<

Reliable SAP P_SAPEA_2023 Test Labs | Test P_SAPEA_2023 Testking

The SAP P_SAPEA_2023 certification is on trending nowadays, and many SAP aspirants are trying to get it. Success in the P_SAPEA_2023 test helps you land well-paying jobs. Additionally, the P_SAPEA_2023 certification exam is also beneficial to get promotions in your current company. But the main problem that every applicant faces while preparing for the P_SAPEA_2023 Certification test is not finding updated SAP Certified Professional - SAP Enterprise Architect (P_SAPEA_2023) practice questions.

SAP Certified Professional - SAP Enterprise Architect Sample Questions (Q24-Q29):

NEW QUESTION # 24

As part of the mapping of a Business Architecture to the Solution Architecture, an Environment & Location Diagram must be developed in the Technology Architecture phase. In this context, numerous architecture decisions have to be made. Among other things, you must check which SAP BTP services and which SAP SaaS solutions are available as part of the Solution Architecture in which data center of the desired hyperscaler. How do you go about this validation?

- A. I use the SAP Business Accelerator Hub (api.sap.com) because it provides all the required information regarding SAP BTP service and SAP SaaS solution availability for each hyperscaler, in a central location.
- **B. I use the SAP Discovery Center to check which of the selected SAP BTP services are offered by which hyperscaler. With help from the SAP Trust Center, I check in which data center the involved SAP SaaS solutions are available.**
- C. I use the SAP Discovery Center to check in which data centers the respective SAP BTP services and the SAP SaaS solutions are available.

Answer: B

Explanation:

According to the SAP Discovery Center 1 and the SAP Trust Center 2, the steps involved in this validation are:

Use the SAP Discovery Center to check which of the selected SAP BTP services are offered by which hyperscaler. The SAP Discovery Center is a platform that provides access to SAP BTP services, events, and related resources, and helps you to implement your use cases on SAP BTP with step-by-step guidance and support from topic experts and SAP Community. In the Service Catalog section of the SAP Discovery Center, you can browse and filter the available SAP BTP services by category, region, or hyperscaler. You can also compare the features and pricing of different services, and learn how to use them in your projects.

Use the SAP Trust Center to check in which data center the involved SAP SaaS solutions are available. The SAP Trust Center is a platform that provides information on cloud performance, security, privacy, and compliance. In the Certification and Compliance section of the SAP Trust Center, you can find certificates, reports, and attestations that show how SAP meets various industry standards and regulatory requirements. You can also filter the documents by solution, region, or hyperscaler, and download them for your reference.

The other options (A and C) are not correct for how to validate the availability of SAP BTP services and SAP SaaS solutions in the desired hyperscaler's data center, because they either do not exist or do not provide the required information. For example:

Option A is not correct because there is no such platform as SAP Business Accelerator Hub (api.sap.com) that provides all the required information regarding SAP BTP service and SAP SaaS solution availability for each hyperscaler. The correct name of the platform is SAP API Business Hub (api.sap.com), which is a platform that provides access to SAP APIs, events, and related resources, but it does not provide any information on the availability of SAP BTP services or SAP SaaS solutions for each hyperscaler or data center.

Option C is not correct because the SAP Discovery Center does not provide any information on the availability of SAP SaaS solutions for each hyperscaler or data center. The SAP Discovery Center only provides information on the availability of SAP BTP services for each hyperscaler or region, but not for specific data centers. To check the availability of SAP SaaS solutions for each data center, you need to use the SAP Trust Center instead.

Topic 1, Case Study - Wanderlust

Introduction

Wanderlust GmbH, headquartered in Germany but with manufacturing facilities and sales globally, is a leading global manufacturer of conventional fuel driven cars. They are renowned for their best-in-class engineering, but not so much for aftermarket customer service. In recent years, Wanderlust has had limited success expanding into the market of electric vehicles. Following is Wanderlust's geographical manufacturing and supply spread:



Wanderlust offers one compact electric Sedan (model ELAN) and one compact electric SUV (model ELUV), each with three variants - basic (LX), mid-range (VX) and high-end (ZX). Customers can also choose from a range of five metallic colors, two drive trains and two battery ranges. Overall, 50 different combinations are offered for all segments and variants put together.

Extracts from CEO Interviews - Business Environment

Constraints/Issues

- o Stiff water consumption regulations and enormous penalties for violation - Lithium extraction is a heavy water intensive process and mine locations are in very arid areas like the Australian outback and Atacama Desert
- o Significant dependence on external suppliers of Lithium batteries due to limited number of manufacturing units, long lead times and high carbon footprint in all car manufacturing facilities except Brazil.

- o Long delays in spare battery availability, leading to an avalanche of unresolved battery related customer complaints for vehicles under warranty
- o Limited charging infrastructure, long charging cycles (as compared to refilling fuel) and slow resolution of battery related complaints.

- o Dwindling in store footfall due to pandemic (for feature-based vehicle selection prior to test drive)

Wanderlust offers one compact electric Sedan (model ELAN) and one compact electric SUV (model ELUV), each with three variants - basic (LX), mid-range (VX) and high-end (ZX). Customers can also choose from a range of five metallic colors, two drive trains and two battery ranges. Overall, 50 different combinations are offered for all segments and variants put together.

Extracts from CEO Interviews - Business Environment

Constraints/Issues

- o Stiff water consumption regulations and enormous penalties for violation - Lithium extraction is a heavy water intensive process and mine locations are in very arid areas like the Australian outback and Atacama Desert
- o Significant dependence on external suppliers of Lithium batteries due to limited number of manufacturing units, long lead times and high carbon footprint in all car manufacturing facilities except Brazil.

- o Long delays in spare battery availability, leading to an avalanche of unresolved battery related customer complaints for vehicles under warranty
- o Limited charging infrastructure, long charging cycles (as compared to refilling fuel) and slow resolution of battery related complaints.

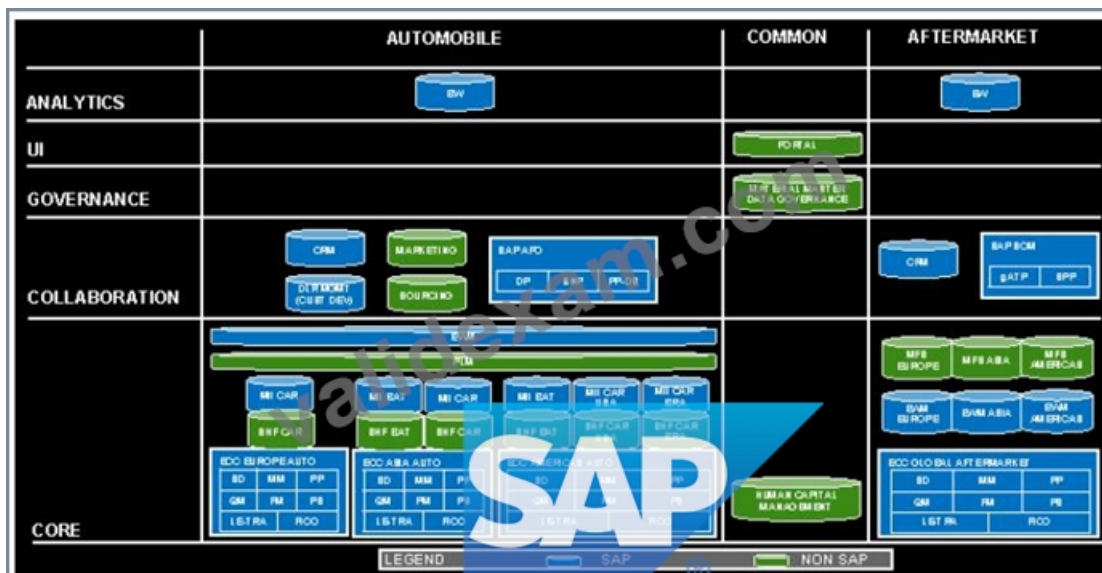
- o Dwindling in store footfall due to pandemic (for feature-based vehicle selection prior to test drive)

Extracts from CIO Interviews - IT Environment

Extracts from CIO Interviews - IT Environment Strategic Priorities - IT

- o Ease of usage
- o Ease of Maintenance
- o Total Cost of Ownership Optimization
- o Time to Value Acceleration
- o Transformation Status
- o Only at a conceptual stage - no planning done yet
- o Nascent architecture practice
- o Unclear on supported processes, required capabilities, applications, and transition path
- o Yet to identify, prioritize and sequence initiatives

As-Is Architecture

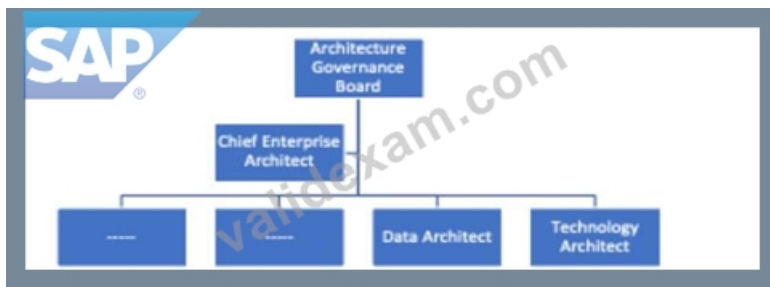


Wanderlust has a separate organization and setup for their Automobile and Aftermarket businesses. Wanderlust is reluctant to consider cloud for Core applications due to data privacy concerns, but are open for Collaboration applications. The Automobile business started off in Europe and grew through acquisitions in Asia and Americas. The Automobile business runs on three continental SAP ECC instances with inherited, disparate processes, which need to move to S/4HANA. The Automobile business is also looking to harmonize their processes across the continents, adopt a seamless, transparent global supply chain for batteries and consolidate the continental instances into a global single instance, data regulations permitting. The Automotive business uses a highly complex custom developed dealer management solution on ECC, which needs to be replaced. The Automotive business uses SAP APO, which is nearing end of lifecycle and needs to be replaced by IBP (DP & SNP) & S/4HANA (PP-DS). The Automotive business uses several bespoke non-SAP applications, which are considered irreplaceable, except for the Marketing and Sourcing applications, which are expensive to maintain, seldom used and hence need to be replaced. The Aftermarket business processes are largely uniform and handled through a single ECC instance which also should move to S/4HANA. The Aftermarket business uses SAP SCM which is nearing end of lifecycle and needs to be replaced by S/4HANA AATP (gATP) and eSPP (SPP). Extracts from Interview with Enterprise Architect Enterprise Architecture Dimensions & Maturity of Wanderlust's Key EA Dimensions, their overall purpose and current maturity level.

Sl No	EA Dimension	Purpose	Current Status & Maturity Level
1	Business-IT Alignment	Traceability between Business Drivers & IT Services	Only strategic objectives defined ●
2	Stakeholder Involvement	Stakeholders Identification, Awareness & Engagement in EA	Only a few stakeholders identified ●
3	Action & Impact	Usage of EA in Sourcing & Investment Decisions & Business Strategy	EA involved in RFP decisions ●
4	Architecture Development	Development Methodology with Standards, & Reference Models	Nothing developed, methodology in place ●
5	Architecture Process	EA Creation, Maintenance, & Approval Processes	Ad hoc ●
6	Organization & Governance	Governance Organization Structure Approved by Senior Management	Governing body formed, team not yet ●
7	Communication	Documentation & Communication of EA Practice Decisions	Artefacts available but not known ●
8	People Enablement	Roles, Skills and RACI Definition of People Involved in EA	Role & skill set defined ●

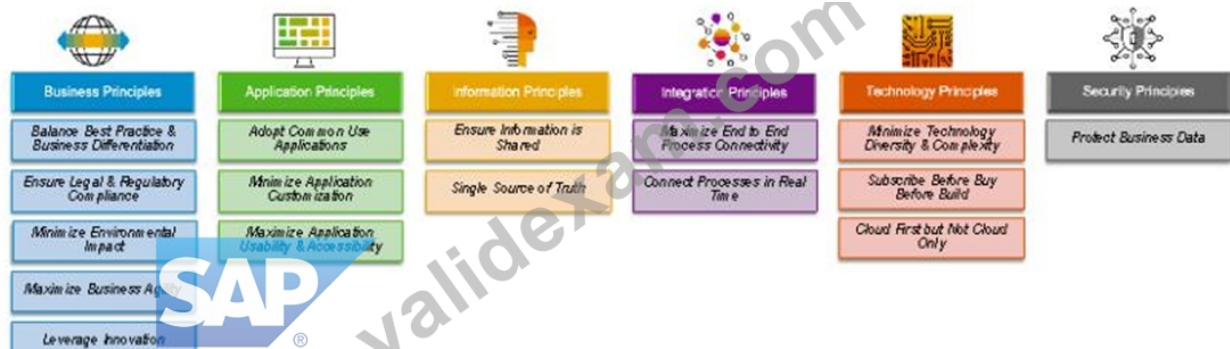
Top three priorities given the current maturity level, are as follows

- Stakeholder Involvement is the topmost priority, to create a Stakeholder Map that'll identify all key EA stakeholders within Wanderlust.
- Business-IT Alignment is also a top priority, to anchor every IT initiative to a Business Strategy Map, consisting of clearly defined strategic business objectives, tangible goals and measurable value drivers.
- Architecture Development is the next priority, beginning with development of business architectures, followed by application architectures and finally opportunities & solutions planning Enterprise Architecture Practice Structure (Current).



Enterprise Architecture Principles

Wanderlust's Enterprise Architecture Principles are a collection of crisp and precise one liners pertaining to business, application, information, integration, technology and security aspects of transformation. Some of the EA Principles in the repository are



These EA Principles serve as high level directional statements and long term guard rails to the above six aspects of transformation programs & projects. They should ideally correlate (many to many) with the Strategic Objectives, defined in the Business-IT alignment EA Dimension - this is yet to be done though.

NEW QUESTION # 25

As a result of solution mapping, business capabilities might require services which partners have implemented in SAP BTP. Which SAP components and services, if any, are required to integrate such BTP partner services with an on-premise SAP S/4HANA system (hybrid scenario)?

- A. SAP Cloud Connector to make the on-premises system available to applications and services in a given SAP BTP sub account. Preferably use the SAP BTP Destination Service in combination with Cloud Connector.
- B. No other components are required to make an SAP on-premise backend system securely accessible over SAP BTP. SAP BTP automatically establishes secure connections in SAP backend systems.
- C. SAP HANA Cloud Connection, and the corresponding SAP Data Provisioning Agent, to make the on-premises system available to applications and services in a given SAP BTP sub account. Preferably use the SAP BTP Destination Service.

Answer: A

Explanation:

Explanation

In a hybrid scenario, where business capabilities require services which partners have implemented in SAP BTP and an on-premise SAP S/4HANA system, the following SAP components and services are required to integrate such BTP partner services with the on-premise system:

SAP Cloud Connector: The SAP Cloud Connector is a software component that allows you to connect your on-premise SAP systems to SAP BTP. The Cloud Connector provides a secure connection between your on-premise system and SAP BTP, and it also makes your on-premise system available to applications and services in SAP BTP.

SAP BTP Destination Service: The SAP BTP Destination Service is a service that provides a single point of entry for accessing on-premise systems from SAP BTP. The Destination Service makes it easy to manage and secure connections to on-premise systems, and it also provides a way to federate data from different on-premise systems.

In order to integrate BTP partner services with an on-premise SAP S/4HANA system, you will need to install the SAP Cloud Connector on your on-premise system and register the Cloud Connector with SAP BTP. You will also need to create a destination in the SAP BTP Destination Service for your on-premise system. Once you have done this, you will be able to access the on-premise system from applications and services in SAP BTP.

It is important to note that you can also use other SAP components to integrate on-premise systems with SAP BTP. However, the SAP Cloud Connector and the SAP BTP Destination Service are the most commonly used components for this purpose.

To integrate BTP partner services with an on-premise SAP S/4HANA system, you need to use the SAP Cloud Connector, which is a reverse proxy that establishes a secure connection between your on-premise system and your SAP BTP subaccount. The Cloud

Connector acts as a bridge between your on-premise network and a trusted subaccount on SAP BTP6. It allows you to access resources in your on-premise network from applications running on SAP BTP without exposing your internal landscape to the internet7.

To simplify the configuration and consumption of the Cloud Connector connection, you can use the SAP BTP Destination Service, which is a service that allows you to define and manage destinations for accessing remote systems from applications running on SAP BTP8. A destination is a set of properties that contains information such as the URL, authentication method, proxy type, and additional parameters of a remote system9. By using the Destination Service, you can centrally manage and securely store the connection details of your on-premise system and consume them from your BTP partner services.

Verified References: 5:

<https://help.sap.com/viewer/cca91383641e40f8b03bdc78f00f681/Cloud/en-US/e6c7616abb5710148cfc3e75d96>

| 6:

<https://help.sap.com/viewer/cca91383641e40f8b03bdc78f00f681/Cloud/en-US/8d3b28a7c1644a1c9d1ee165ec0>

| 7:

<https://help.sap.com/viewer/cca91383641e40f8b03bdc78f00f681/Cloud/en-US/e54cc8fbbb571014a4d9e7f02f9f>

| 8:

<https://help.sap.com/viewer/cca91383641e40f8b03bdc78f00f681/Cloud/en-US/3cb7b81115c44cf594e0e363129>

| 9:

<https://help.sap.com/viewer/cca91383641e40f8b03bdc78f00f681/Cloud/en-US/e54f70d327154aa0a4ba36ce7ac4>

NEW QUESTION # 26

While discussing the Smart Battery initiative in greater detail with the appropriate stakeholder, as Chief Enterprise Architect of Wanderlust, you discover that several key areas such as value proposition, cost structure, revenue streams, partners, and channels have been worked upon in isolation and therefore do not tally with each other. Which artifact would you recommend to bring all the above key dimensions together in a single window, to have a unified, consistent, holistic view of the Smart Battery initiative?

- A. Statement of Architecture Work
- B. Architecture Principles
- **C. Business Model Canvas**
- D. Business Strategy Map

Answer: C

Explanation:

A Business Model Canvas is a strategic management and entrepreneurial tool that allows you to describe, design, challenge, invent, and pivot your business model1. A Business Model Canvas consists of nine building blocks that cover the four main areas of a business: customers, offer, infrastructure, and financial viability2. These building blocks are:

Value Proposition: The value that you deliver to your customers and the problem that you solve for them.

Customer Segments: The different groups of people or organizations that you aim to reach and serve.

Channels: The ways that you communicate with and deliver value to your customers.

Customer Relationships: The types of relationships that you establish and maintain with your customers.

Revenue Streams: The sources of income that you generate from your value proposition.

Key Resources: The most important assets that you need to create and deliver your value proposition.

Key Activities: The most important things that you do to create and deliver your value proposition.

Key Partnerships: The network of suppliers and partners that help you create and deliver your value proposition.

Cost Structure: The most significant costs that you incur to create and deliver your value proposition.

A Business Model Canvas is a useful artifact to bring all the key dimensions of the Smart Battery initiative together in a single window, to have a unified, consistent, holistic view of the initiative. By using a Business Model Canvas, you can:

Visualize the entire business model of the Smart Battery initiative on one page.

Identify the gaps, inconsistencies, or conflicts among the different elements of the business model.

Align the value proposition, cost structure, revenue streams, partners, and channels with the customer segments and their needs.

Test and validate your assumptions and hypotheses about the business model.

Iterate and improve your business model based on feedback and data.

Verified : 1: <https://www.strategyzer.com/canvas/business-model-canvas> | 2: <https://www.investopedia.com/terms/b/business-model-canvas.asp>

NEW QUESTION # 27

As the Chief Enterprise Architect of Wanderlust GmbH, you are aware that EA principles should correlate to the Business and IT Strategic Objectives and decisions. In the list given below, the left column has some Wanderlust Business/IT objectives and

decisions and the right column has some EA principles. Which objectives and decisions correlate best to which principle?

Minimize water loss during Lithium extraction	<p>Ensure legal and regulatory compliance and minimize environmental impact</p> <p>Minimize technology diversity and complexity and subscribe before buy before build</p> <p>Maximize business agility and use innovation</p> <p>Adopt common use applications and balance best practice and with best of breed</p> <p>Protect business data and cloud first but not cloud only</p>
Reluctant to move Core to Cloud but open to consider cloud for collaboration	<p>Ensure legal and regulatory compliance and minimize environmental impact</p> <p>Minimize technology diversity and complexity and subscribe before buy before build</p> <p>Maximize business agility and use innovation</p> <p>Adopt common use applications and balance best practice and with best of breed</p> <p>Protect business data and cloud first but not cloud only</p>
Smart Battery, Insta-Charge and Perpetual Warranty initiatives	<p>Ensure legal and regulatory compliance and minimize environmental impact</p> <p>Minimize technology diversity and complexity and subscribe before buy before build</p> <p>Maximize business agility and use innovation</p> <p>Adopt common use applications and balance best practice and with best of breed</p> <p>Protect business data and cloud first but not cloud only</p>
Substitute bespoke applications	<p>Ensure legal and regulatory compliance and minimize environmental impact</p> <p>Minimize technology diversity and complexity and subscribe before buy before build</p> <p>Maximize business agility and use innovation</p> <p>Adopt common use applications and balance best practice and with best of breed</p> <p>Protect business data and cloud first but not cloud only</p>
Total cost of ownership optimization	<p>Ensure legal and regulatory compliance and minimize environmental impact</p> <p>Minimize technology diversity and complexity and subscribe before buy before build</p> <p>Maximize business agility and use innovation</p> <p>Adopt common use applications and balance best practice and with best of breed</p> <p>Protect business data and cloud first but not cloud only</p>

Answer:

Explanation:

Minimize water loss during Lithium extraction	<p>Ensure legal and regulatory compliance and minimize environmental impact</p> <p>Minimize technology diversity and complexity and subscribe before buy before build</p> <p>Maximize business agility and use innovation</p> <p>Adopt common use applications and balance best practice and with best of breed</p> <p>Protect business data and cloud first but not cloud only</p>
Reluctant to move Core to Cloud but open to consider cloud for collaboration	<p>Ensure legal and regulatory compliance and minimize environmental impact</p> <p>Minimize technology diversity and complexity and subscribe before buy before build</p> <p>Maximize business agility and use innovation</p> <p>Adopt common use applications and balance best practice and with best of breed</p> <p>Protect business data and cloud first but not cloud only</p>
Smart Battery, Insta-Charge and Perpetual Warranty initiatives	<p>Ensure legal and regulatory compliance and minimize environmental impact</p> <p>Minimize technology diversity and complexity and subscribe before buy before build</p> <p>Maximize business agility and use innovation</p> <p>Adopt common use applications and balance best practice and with best of breed</p> <p>Protect business data and cloud first but not cloud only</p>
Substitute bespoke applications	<p>Ensure legal and regulatory compliance and minimize environmental impact</p> <p>Minimize technology diversity and complexity and subscribe before buy before build</p> <p>Maximize business agility and use innovation</p> <p>Adopt common use applications and balance best practice and with best of breed</p> <p>Protect business data and cloud first but not cloud only</p>
Total cost of ownership optimization	<p>Ensure legal and regulatory compliance and minimize environmental impact</p> <p>Minimize technology diversity and complexity and subscribe before buy before build</p> <p>Maximize business agility and use innovation</p> <p>Adopt common use applications and balance best practice and with best of breed</p> <p>Protect business data and cloud first but not cloud only</p>

NEW QUESTION # 28

Which artifact from the SAP Reference Solution Architecture shows which data objects are exchanged between SAP application components in a given end-to-end scenario?

- A. SAP Data Object Diagram, which is available from SAP API Business Accelerator Hub (api.sap.com)
- B. SAP Data Component Diagram, which is available in SAP Signavio Process Explorer

- C. SAP Data Flow Diagram, which is available from SAP API Business Accelerator Hub (api.sap.com)

Answer: C

Explanation:

Explanation

The SAP Data Flow Diagram (DFD) is an artifact from the SAP Reference Solution Architecture that shows which data objects are exchanged between SAP application components in a given end-to-end scenario. The DFD uses a graphical representation to show the flow of data between different components of a system.

The SAP Data Object Diagram (DOD) is also an artifact from the SAP Reference Solution Architecture, but it does not show the flow of data between different components. The DOD shows the structure of data objects, including their attributes and relationships.

The SAP Data Component Diagram (DCD) is an artifact from SAP Signavio Process Explorer, which is a tool for modeling business processes. The DCD shows the different components of a system, including their relationships.

Therefore, the correct answer is option B.

Here is a table that summarizes the different artifacts and their purposes:

Artifact	Purpose
SAP Data Flow Diagram	Shows the flow of data between different components of a system.
SAP Data Object Diagram	Shows the structure of data objects, including their attributes and relationships.
SAP Data Component Diagram	Shows the different components of a system, including their relationships.

According to the SAP Reference Architecture Content: An Overview - Part 2, the SAP Data Flow Diagram is an artifact that shows the flow of data through the SAP solution, from the source to the destination. It also shows which data objects are exchanged between the different components and services of the SAP solution, such as master data, transactional data, analytical data, or configuration data. The SAP Data Flow Diagram can help you to understand and communicate how data is created, transformed, and consumed in a SAP solution, and to identify and optimize the data integration points and dependencies.

The other options (A and C) are not correct for the artifact from the SAP Reference Solution Architecture that shows which data objects are exchanged between SAP application components in a given end-to-end scenario, because they either do not exist or do not show the data flow. For example:

Option A is not correct because there is no such artifact as SAP Data Object Diagram in the SAP Reference Solution Architecture content. The SAP API Business Accelerator Hub (api.sap.com) is a platform that provides access to SAP APIs, events, and related resources, but it does not provide any diagrams that show the data objects exchanged between SAP application components.

Option C is not correct because the SAP Data Component Diagram is not an artifact that shows the data flow, but rather an artifact that shows the main components and services that constitute the target application architecture, as well as their relationships and interactions. The SAP Data Component Diagram does not show which data objects are exchanged between the different components and services of the SAP solution. The SAP Signavio Process Explorer is a tool that helps you to model, analyze, and optimize business processes, but it does not provide any diagrams that show the data flow.

NEW QUESTION # 29

.....

We believe that the best brands are those that go beyond expectations. They don't just do the job – they go deeper and become the fabric of our lives. Therefore, as the famous brand, even though we have been very successful we have never satisfied with the status quo, and always be willing to constantly update the contents of our P_SAPEA_2023 exam torrent. Most important of all, as long as we have compiled a new version of the P_SAPEA_2023 Guide Torrent, we will send the latest version of our P_SAPEA_2023 training materials to our customers for free during the whole year after purchasing. We will continue to bring you integrated P_SAPEA_2023 guide torrent to the demanding of the ever-renewing exam, which will be of great significance for you to keep pace with the times.

Reliable P_SAPEA_2023 Test Labs: https://www.validexam.com/P_SAPEA_2023-latest-dumps.html

- P_SAPEA_2023 Frenquent Update ☐ Practice P_SAPEA_2023 Online ☒ Trustworthy P_SAPEA_2023 Pdf ☐
Search for > P_SAPEA_2023 ☐ and download exam materials for free through ☐ www.testkingpass.com ☐ ☐
☐ P_SAPEA_2023 Dumps Vce

- Latest P_SAPEA_2023 Exam Question □ P_SAPEA_2023 Latest Exam Tips □ P_SAPEA_2023 Latest Test Sample □ Easily obtain free download of ➡ P_SAPEA_2023 □ by searching on 《 www.pdfvce.com 》 □ P_SAPEA_2023 Latest Mock Exam
- Best Professional SAP P_SAPEA_2023 New Dumps Ebook - P_SAPEA_2023 Free Download □ Search for ▷ P_SAPEA_2023 ◁ and obtain a free download on 《 www.dumpsquestion.com 》 □ P_SAPEA_2023 Latest Exam Tips
- Latest P_SAPEA_2023 Exam Question □ Latest P_SAPEA_2023 Exam Question □ Trustworthy P_SAPEA_2023 Pdf □ Enter ➤ www.pdfvce.com □ and search for ➡ P_SAPEA_2023 □ to download for free □ P_SAPEA_2023 New Test Camp
- P_SAPEA_2023 Dumps Vce □ Certification P_SAPEA_2023 Exam Infor □ Pass4sure P_SAPEA_2023 Dumps Pdf □ Easily obtain ☀ P_SAPEA_2023 □ ☀ for free download through □ www.testkingpass.com □ □ P_SAPEA_2023 Reliable Real Exam
- The latest SAP certification P_SAPEA_2023 exam practice questions and answers □ Download ➡ P_SAPEA_2023 □ for free by simply searching on □ www.pdfvce.com □ □ Valid P_SAPEA_2023 Exam Sims
- 2026 P_SAPEA_2023 New Dumps Ebook 100% Pass | Latest SAP Reliable SAP Certified Professional - SAP Enterprise Architect Test Labs Pass for sure □ Search for 「 P_SAPEA_2023 」 and easily obtain a free download on □ www.vce4dumps.com □ □ Certification P_SAPEA_2023 Exam Infor
- Get Updated SAP P_SAPEA_2023 Exam Questions (2026) □ Search on ▶ www.pdfvce.com ◀ for ⇒ P_SAPEA_2023 ⇐ to obtain exam materials for free download □ Valid P_SAPEA_2023 Exam Sims
- Pass Guaranteed 2026 P_SAPEA_2023: SAP Certified Professional - SAP Enterprise Architect –Valid New Dumps Ebook □ Easily obtain { P_SAPEA_2023 } for free download through { www.prepawayete.com } □ P_SAPEA_2023 Dumps Vce
- Certification P_SAPEA_2023 Exam Infor □ P_SAPEA_2023 Trustworthy Practice □ Valid P_SAPEA_2023 Exam Vce □ Open website ➡ www.pdfvce.com □ □ and search for ➡ P_SAPEA_2023 □ for free download □ Reliable P_SAPEA_2023 Exam Test
- Best Professional SAP P_SAPEA_2023 New Dumps Ebook - P_SAPEA_2023 Free Download □ The page for free download of ➡ P_SAPEA_2023 □ on ⇒ www.examcollectionpass.com ⇐ will open immediately □ Pass4sure P_SAPEA_2023 Dumps Pdf
- www.stes.tyc.edu.tw, shangjiaw.cookeji.com, www.stes.tyc.edu.tw, www.stes.tyc.edu.tw, www.stes.tyc.edu.tw, daotao.wisebusiness.edu.vn, pedforsupplychain.ny.id, bloomingcareerss.com, www.stes.tyc.edu.tw, saintraphaelcareerinstitute.net, Disposable vapes

What's more, part of that ValidExam P_SAPEA_2023 dumps now are free: <https://drive.google.com/open?id=1WCuSrtCpZXCDKT5oA75ETgB2ipO1RuTy>