

# Updated C-ADBTP-2601 Testkings & Valid Braindumps C-ADBTP-2601 Sheet



If you are going to take SAP C-ADBTP-2601 certification exam, it is essential to use C-ADBTP-2601 training materials. If you are looking for reference materials without a clue, stop! If you don't know what materials you should use, you can try BraindumpsPrep SAP C-ADBTP-2601 exam dumps. The hit rate of the dumps is very high, which guarantees you can pass your exam with ease at the first attempt. BraindumpsPrep SAP C-ADBTP-2601 Practice Test dumps can determine accurately the scope of the examination compared with other exam materials, which can help you improve efficiency of study and help you well prepare for C-ADBTP-2601 exam.

In order to make you be rest assured to buy our C-ADBTP-2601 exam software, we provide the safest payment method –PayPal payment. PayPal is one of the biggest international security payment systems. And we protect your personal information not be leaked. If you have any problem of C-ADBTP-2601 Exam Dumps or interested in other test software, you can contact us online directly, or email us. We will try our best to help you pass the C-ADBTP-2601 exam.

>> Updated C-ADBTP-2601 Testkings <<

## Valid Braindumps C-ADBTP-2601 Sheet | C-ADBTP-2601 Latest Cram Materials

If you are going to purchasing the C-ADBTP-2601 exam bootcamp online, you may pay more attention to the pass rate. With the pass rate more than 98%, our C-ADBTP-2601 exam materials have gained popularity in the international market. And we have received many good feedbacks from our customers. In addition, we offer you free demo to have a try before buying C-ADBTP-2601 Exam Braindumps, so that you can have a deeper understanding of what you are going to buy. You can also enjoy free update for one year, and the update version for C-ADBTP-2601 will be sent to your email automatically.

## SAP Administrating SAP Business Technology Platform(C\_ADBTP\_2601) Sample Questions (Q10-Q15):

### NEW QUESTION # 10

#### SIMULATION

Enable a Cloud Foundry Environment

Add a service plan for Cloud Foundry environment and enable it in a subaccount.

Task 1: Add a Service Plan for Cloud Foundry Environment

In your SAP BTP cockpit, in your EU HCM Dev subaccount, entitle one MEMORY service plan for the Cloud Foundry Runtime.

#### Answer:

Explanation:

See the Explanation below for complete solution.

Explanation:

Before you start

Log in to SAP BTP Cockpit.

Open your correct Global Account.

Go to the Human Resources directory.

Open the EU HCM Dev subaccount.

This matters because the runtime memory quota must be assigned to the EU HCM Dev subaccount specifically. SAP documents that the MEMORY plan is the quota-bearing plan for Cloud Foundry Runtime.

Step 1 - Open the EU HCM Dev subaccount

In the cockpit, choose Directories.

Open Human Resources.

Select EU HCM Dev.

You should now be on the EU HCM Dev subaccount page.

Step 2 - Open Entitlements

In EU HCM Dev, choose Entitlements.

SAP Help confirms that service plans and quota assignments for a subaccount are configured in the Entitlements area.

Step 3 - Configure entitlements

Click Configure Entitlements or Add Service Plans.

Search for:

Cloud Foundry Runtime

In SAP Help, this appears as Cloud Foundry Runtime (APPLICATION\_RUNTIME), and the relevant plan for assigning runtime memory is MEMORY.

Step 4 - Select the MEMORY plan

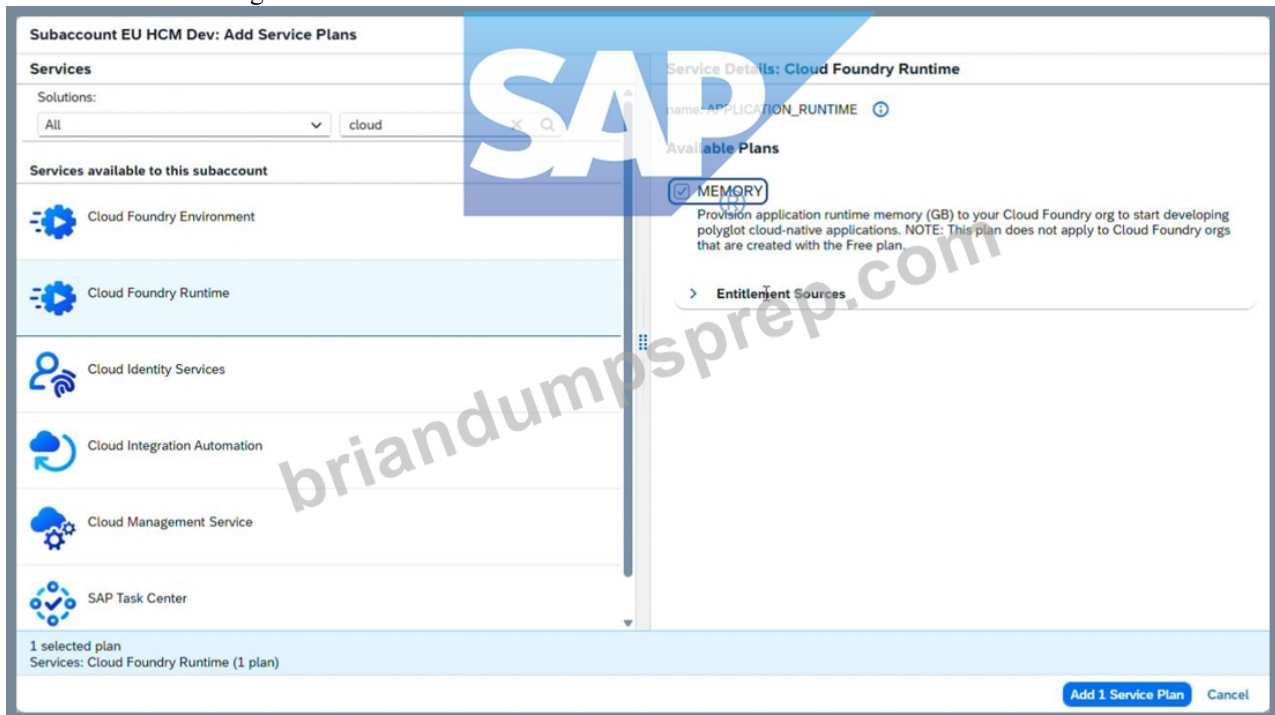
Under Cloud Foundry Runtime, select:

MEMORY

Set the quantity to 1 if the cockpit shows an amount/quota field.

Add the plan to the subaccount.

Save the entitlement changes.



SAP documents that the MEMORY plan is specifically used to assign runtime memory quota to the subaccount, and that 1 unit corresponds to 1 GB of runtime memory when quota is adjusted or assigned.

Step 5 - Verify the result

After saving, check the Entitlements page of EU HCM Dev.

You should see:

Cloud Foundry Runtime

plan: MEMORY

quantity: 1 if shown

Final expected result

Inside EU HCM Dev:

Cloud Foundry Runtime is entitled

the service plan is MEMORY

the assigned amount is 1 if the cockpit displays quantity/quota units

Common mistakes to avoid

Doing this in the wrong subaccount; it must be EU HCM Dev

Choosing the wrong Cloud Foundry plan; the task asks for MEMORY

Forgetting to save the entitlement change after adding the plan

Confusing the runtime memory entitlement with the later step of actually enabling the Cloud Foundry environment; SAP distinguishes the MEMORY runtime quota from enabling the Cloud Foundry org itself.

## NEW QUESTION # 11

### SIMULATION

Establish Shared Services

Task 2: Entitle and Subscribe a Service in a Shared Subaccount

In your SAP BTP cockpit, in your SH Dev subaccount, entitle one standard (Application) service plan for the SAP Build Work Zone, advanced edition.

In the SH Dev subaccount, establish a trust to the agvlankzw.accounts.ondemand.com identity provider.

In your SH Dev subaccount, create a service subscription for SAP Build Work Zone, advanced edition with the standard service plan.

### Answer:

Explanation:

See the Explanation below for complete solution.

Explanation:

Before you start

Log in to SAP BTP Cockpit.

Open your correct Global Account.

Go to the Shared Services directory.

Open the SH Dev subaccount.

This matters because all three required actions must be done inside SH Dev, not in the directory and not in another subaccount.

Part 1 - Entitle the service in SH Dev

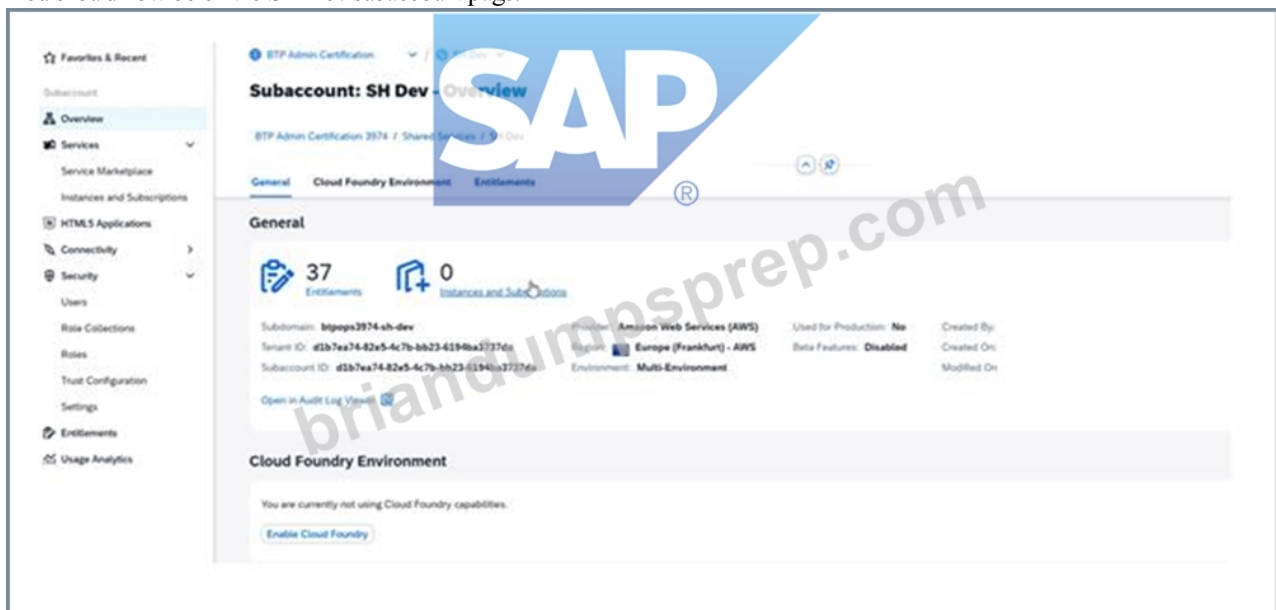
Step 1 - Open the subaccount

In the cockpit, choose Directories.

Open Shared Services.

Select SH Dev.

You should now be on the SH Dev subaccount page.



Step 2 - Open Entitlements

In SH Dev, choose Entitlements.

SAP documents that service plans and quotas for a subaccount are added in the subaccount's Entitlements are a.

Step 3 - Add the required service plan

Click Configure Entitlements or Add Service Plans.

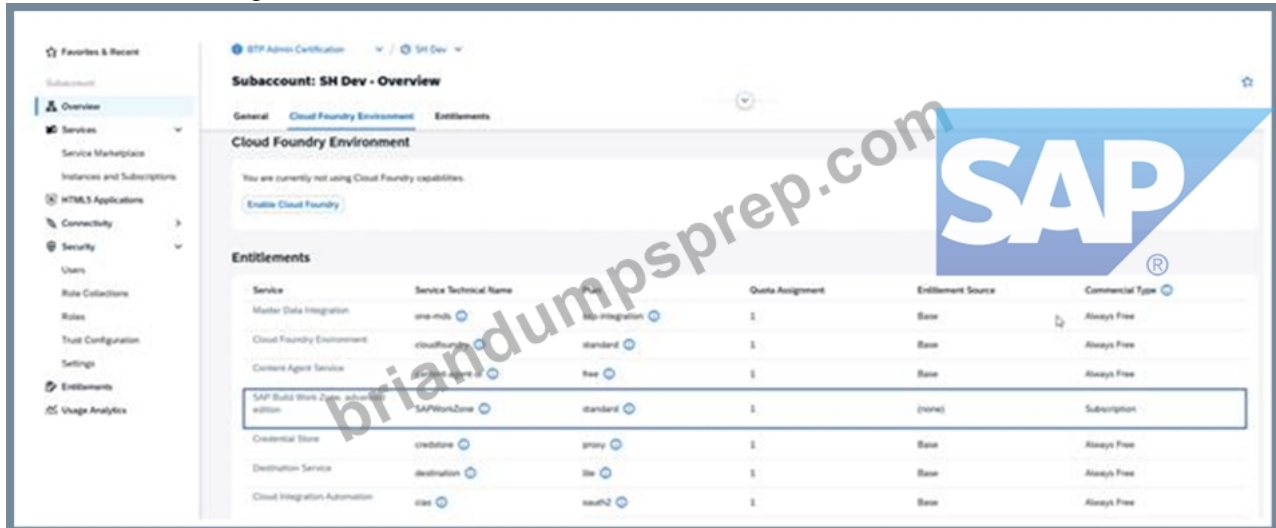
Search for SAP Build Work Zone, advanced edition.

Select the service.

Choose the plan standard (Application).

Set the quantity to 1 if a quota/amount field is shown.

Save the entitlement changes.



This task explicitly asks for one standard (Application) service plan. SAP Help also notes that SAP Build Work Zone usage depends on the correct entitlement being available in the subaccount first.

Verify

Under Entitlements, you should now see:

SAP Build Work Zone, advanced edition

plan: standard (Application)

quantity: 1 if shown

Part 2 - Establish trust to the identity provider

Step 4 - Open Trust Configuration

In SH Dev, go to Security.

Choose Trust Configuration.

SAP Help states that trust to a custom identity provider is established from Security > Trust Configuration in the SAP BTP cockpit.

Step 5 - Create the trust

Click Establish Trust.

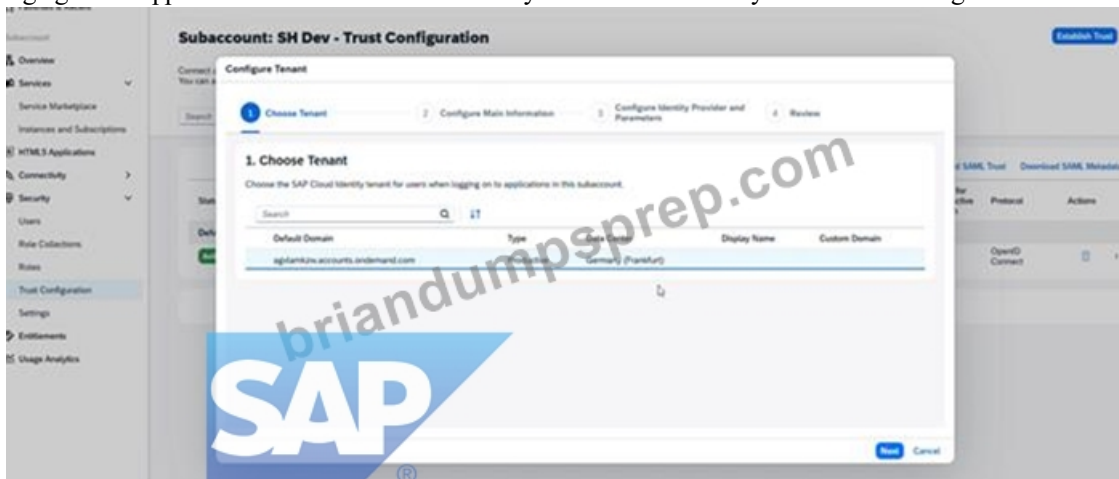
Enter or select the identity provider:

agvlamkzw.accounts.ondemand.com

Continue through the wizard.

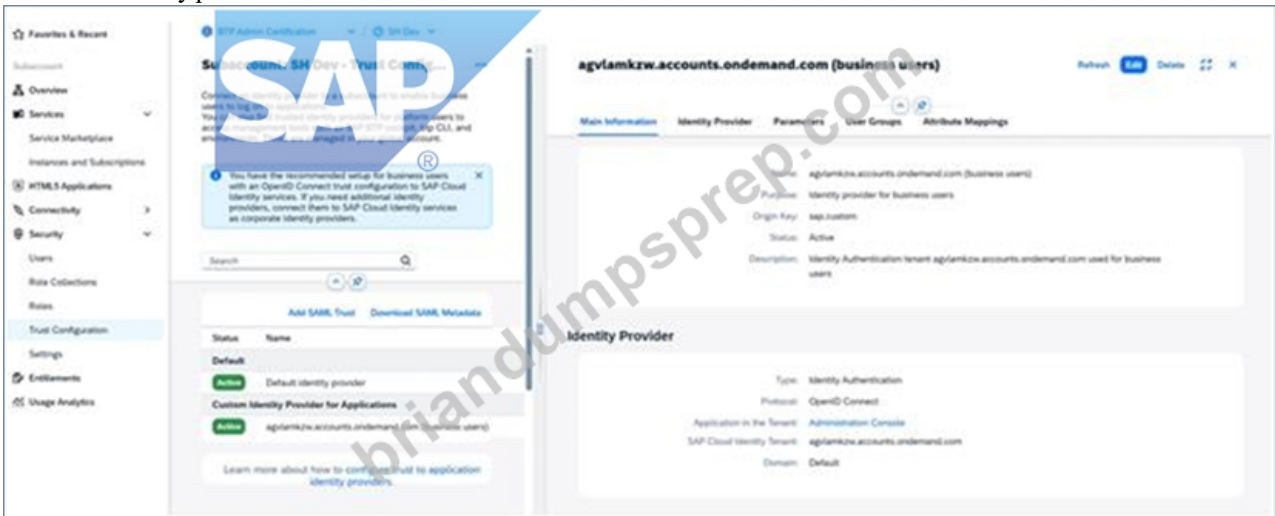
Save the trust configuration.

SAP documents that to use a custom identity provider, the subaccount must have a trust relationship to that provider. SAP also highlights that apps such as SAP Build Work Zone rely on SAP Cloud Identity Services trust configuration.



Verify

On the Trust Configuration page, you should see:  
agvlamkzw.accounts.ondemand.com  
as a trusted identity provider.



Part 3 - Create the subscription

Step 6 - Open Instances and Subscriptions

In SH Dev, go to Services.

Choose Instances and Subscriptions.

Step 7 - Create the subscription

Click Create.

Choose Subscription if the cockpit asks for a type.

Search for SAP Build Work Zone, advanced edition.

Select the service.

Choose the plan standard.

Confirm the creation.

SAP Help for SAP Build Work Zone scenarios indicates that the subaccount needs the correct entitlements and subscription flow to expose and use SAP Build Work Zone content.

Step 8 - Confirm subscription status

Stay on Instances and Subscriptions.

Check that the new subscription appears and is active.

Verify

You should see:

SAP Build Work Zone, advanced edition

plan: standard

subscription created successfully

### New Instance or Subscription

**1**  
Basic info

Enter basic info for your instance or subscription.

**i** Some services are not shown because Cloud Foundry is not enabled. To enable it, select it from the Service dropdown menu and create an instance of it.

Service:  Can't find what you're looking for?

Plan:

**Create** **Cancel**

Final expected result

Inside SH Dev:

the entitlement for SAP Build Work Zone, advanced edition exists

the entitled plan is standard (Application)

trust is established to agvlamkzw.accounts.ondemand.com

a subscription exists for SAP Build Work Zone, advanced edition

the subscription uses the standard plan

Common mistakes to avoid

Doing the entitlement in Shared Services directory instead of SH Dev

Choosing SAP Build Work Zone, standard edition instead of advanced edition

Choosing the wrong plan; the entitlement must be

standard (Application)

Forgetting the trust step to agvlamkzw.accounts.ondemand.com

Trying to subscribe before the entitlement

exists

**Subaccount: SH Dev - Instances and Subscriptions**

Subscriptions (1) | Instances (0) | Environments (0)

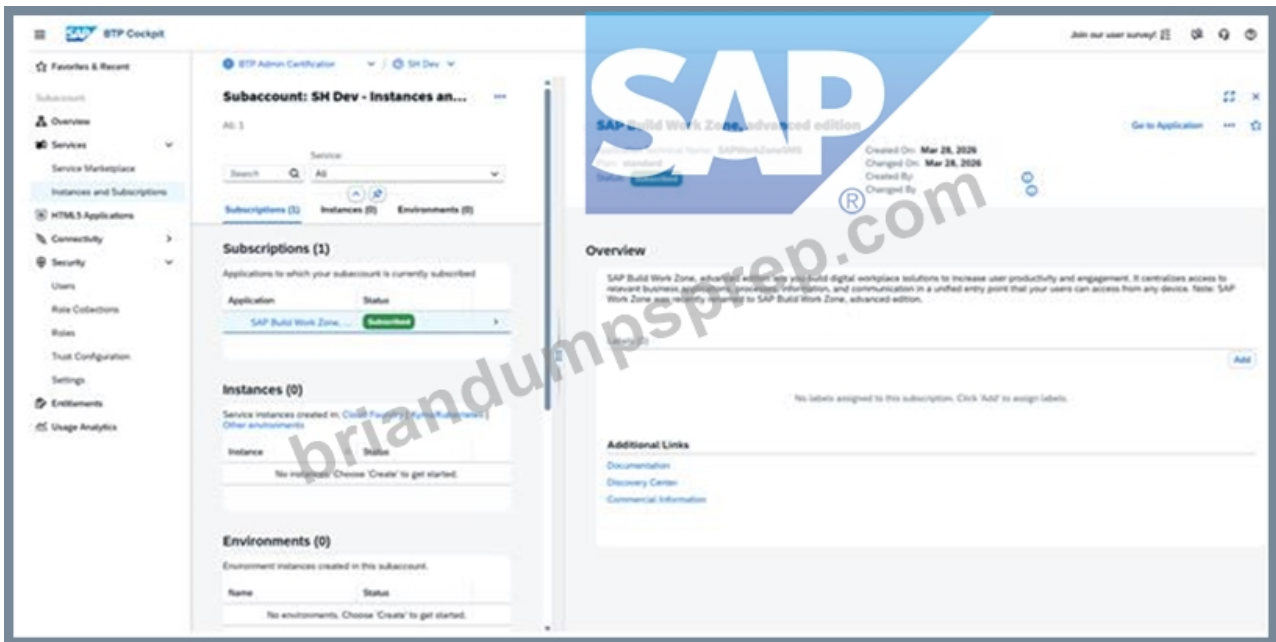
Applications to which your subaccount is currently subscribed:

Application	Plan	Changed On	Status
SAP Build Work Zone, advanced edition	standard	Mar 26, 2026	Processing

Instances (0)

Service instances created in this subaccount (0) | Applications (0) | Other environments

Instance	Service	Plan	Runtime Environment	Scope	Credentials	Status
No instances. Click 'Create' to get started.						



## NEW QUESTION # 12

### SIMULATION

Enable Service Subscriptions

Task 2: Entitle and Subscribe a Service in a Subaccount

In your AM PA Prod subaccount, entitle the standard (Application) service plan for SAP Build Work Zone, standard edition.

In the AM PA Prod subaccount, establish a trust to the agvlamkzw.accounts.ondemand.com identity provider.

In your AM PA Prod subaccount, create a service subscription for SAP Build Work Zone, standard edition with the standard service plan.

### Answer:

Explanation:

See the Explanation below for complete solution.

Explanation:

Part A - Entitle the Service Plan in AM PA Prod

Step 1 - Open the AM PA Prod Subaccount

What to do

In the SAP BTP Cockpit, go to Directories.

Open the Partner directory.

Select the subaccount AM PA Prod.

Explanation:

This opens the exact subaccount where the entitlement and subscription must be created.

What to verify

You should now be on the AM PA Prod subaccount page.

Step 2 - Open Entitlements in the Subaccount

What to do

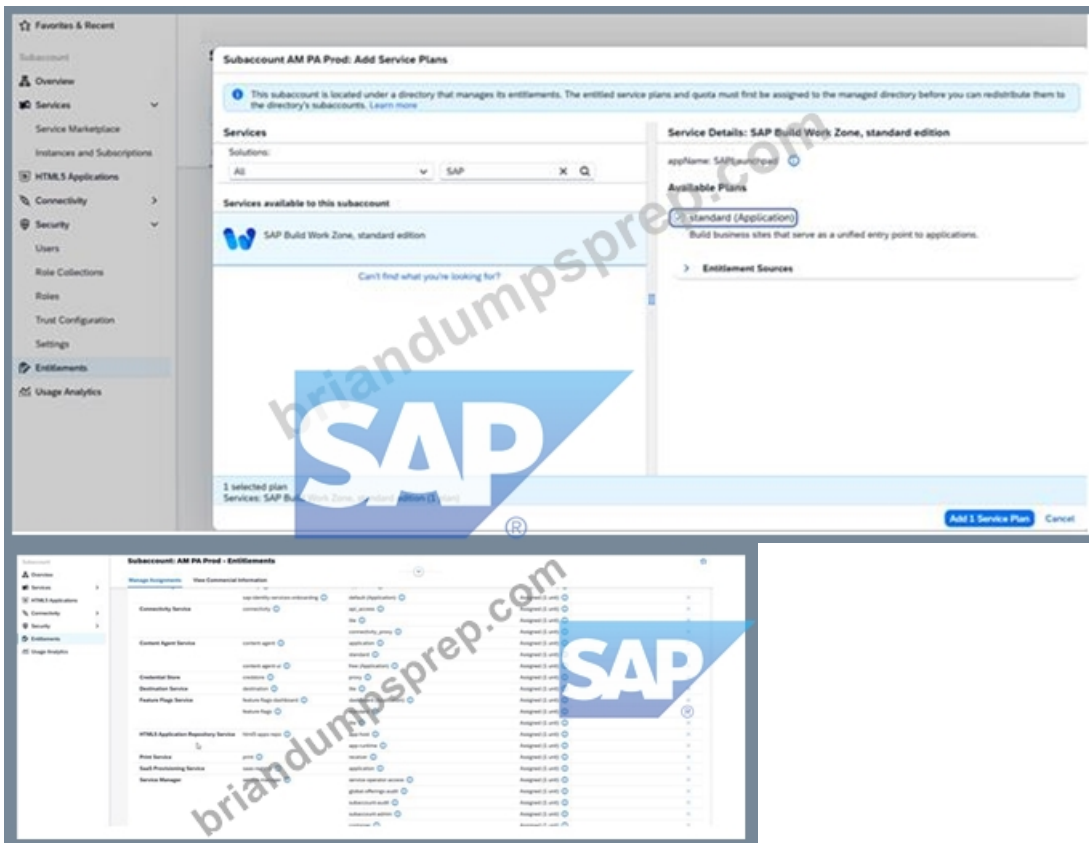
In AM PA Prod, open Entitlements.

Explanation:

SAP documents that subaccount entitlements are configured in the subaccount's entitlement area, where you add service plans and quotas available to that subaccount.

What to verify

You should see the Entitlements screen for AM PA Prod.



### Step 3 - Add the Required Service Plan

What to do

Click Configure Entitlements or Add Service Plans.

Search for:

SAP Build Work Zone, standard edition

Select the service.

Choose the plan:

standard (Application)

Add the service plan.

Save the entitlement changes.

Explanation:

The task requires the standard (Application) plan specifically. SAP's entitlement flow requires you to add the service plan to the subaccount before you can subscribe to the application.

What to verify

Under Entitlements, you should now see:

SAP Build Work Zone, standard edition

plan: standard (Application)

### Part B - Establish Trust to the Identity Provider

#### Step 4 - Open Trust Configuration

What to do

In the AM PA Prod subaccount, go to:

Security

Trust Configuration

Explanation:

SAP Help states that trust to a custom identity provider is established from the cockpit in Security > Trust Configuration.

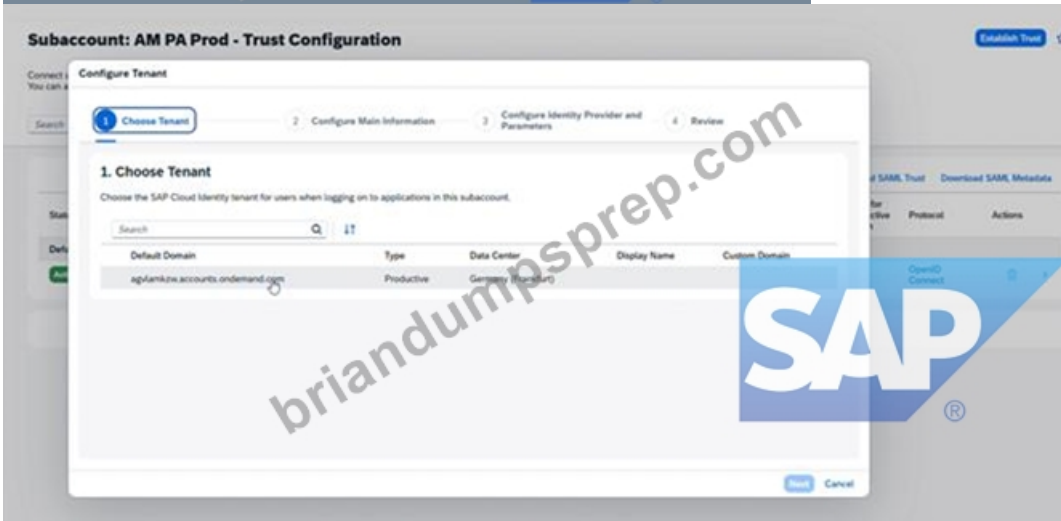
What to verify

You should be on the Trust Configuration page of AM PA Prod.

#### Step 5 - Start the Trust Setup

What to do

Click Establish Trust or New Trust Configuration.



Explanation:

This opens the wizard or form to add a trusted identity provider for the subaccount. SAP documents this as the standard cockpit flow for custom identity provider trust.

Step 6 - Enter the Identity Provider

What to do

In the trust configuration, use the identity provider:

agvlankzw.accounts.ondemand.com

Continue through the wizard and confirm the trust setup.

Save the configuration.

Explanation:

The simulation explicitly requires trust to that identity provider domain. For SAP Build Work Zone, standard edition, SAP also notes that the subaccount must trust an identity provider before subscription use cases for business users are completed.

What to verify

On the Trust Configuration page, the identity provider agvlankzw.accounts.ondemand.com should appear as trusted.

**Configure Tenant**

1 Choose Tenant — 2 **Configure Main Information** — 3 Configure Identity Provider and Parameters — 4 Review

## 2. Configure Main Information

### Main Information

If you need multiple trust configurations for business users, make sure that you provide an understandable link text. This helps users choose the right identity provider during logon.

Name: \*

Purpose:

Origin Key: \*

Description:

Previous **Next** Cancel

**Configure Tenant**

1 Choose Tenant — 2 Configure Main Information — 3 **Configure Identity Provider and Parameters** — 4 Review

## 3. Configure Identity Provider and Parameters

For a good single sign-on experience, choose the same domain for all BTP accounts and non-BTP applications. Choose "Default" to always use the default domain configured in your tenant.

### Identity Provider

SAP Cloud Identity Tenant:

Domain: \*

### Parameters

Available for User Logon:

Link Text for User Logon: \*

Create Shadow Users on Logon:

Default for non-interactive logon:

Previous **Next** Cancel

The screenshot shows the SAP BTP Admin Console interface. On the left, the 'Trust Configuration' menu is expanded. The main area displays the configuration for a subaccount named 'AM PA Prod - Trust C...'. A notification indicates that the recommended setup for business users with an OpenID Connect trust configuration to SAP Cloud Identity services is complete. Below this, there are options to 'Add SAML Trust' or 'Download SAML Metadata'. The 'Trust Configuration' table shows two entries: 'Default' (Default identity provider) and 'Custom Identity Provider for Applications' (agvlamkzw.accounts.ondemand.com). The 'Custom Identity Provider for Applications' entry is selected, showing its details in a modal window. The modal window displays the 'Main Information' (Name, Purpose, Origin Key, Description), 'Identity Provider' (Type: Identity Authentication, Protocol: OpenID Connect, Application in the Tenant: Administration Console, SAP Cloud Identity Tenant, Domain: Default), and 'Parameters' (Available for User Logon, Link Text for User Logon).

Part C - Create the Service Subscription  
 Step 7 - Open the Subscription Area  
 What to do

In AM PA Prod, go to:

Services

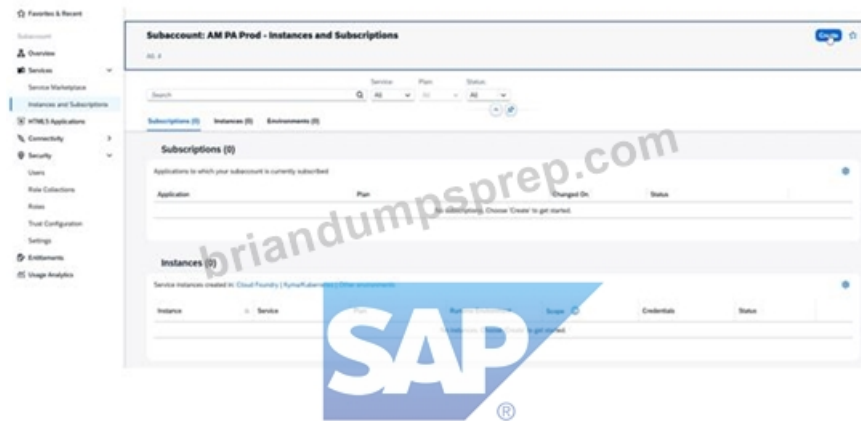
Instances and Subscriptions

Explanation:

SAP Help for SAP Build subscriptions points to the subaccount subscription flow after the entitlement is available. In current cockpit usage, subscriptions are created from the subaccount's services are a.

What to verify

You should see the Instances and Subscriptions page.



Step 8 - Create the Subscription

What to do

Click Create.

Choose Subscription if a type selection appears.

Search for:

SAP Build Work Zone, standard edition

Select the plan:

standard

Then confirm the creation.

new instance of subscription



Enter basic info for your instance or subscription.

**i** Some services are not shown because Cloud Foundry is not enabled. To enable it, select it from the Service dropdown menu and create an instance of it.

Service: \* **i**

Can't find what you're looking for?

Select service

Plan: \*

briandumpsprep.com



Next > Create Cancel

## New Instance or Subscription

1

Basic Info

Enter basic info for your instance or subscription.

**i** Some services are not shown because Cloud Foundry is not enabled. To enable it, select it from the Service dropdown menu and create an instance of it.

SAP

Service: \* **i**

Can't find what you're looking for?

SAP Build Work Zone, standard edition

Plan: \*

standard

Create Cancel

Explanation:

SAP's getting-started guidance for SAP Build Work Zone, standard edition says that once the subaccount has the required entitlement, you can subscribe to the application from the subaccount.

What to verify

You should now see a subscription entry for:

SAP Build Work Zone, standard edition

plan: standard

Step 9 - Confirm the Subscription Is Active

What to do

Check the status of the new subscription in Instances and Subscriptions.

Explanation:

The subscription should be visible and active in the subaccount after creation.

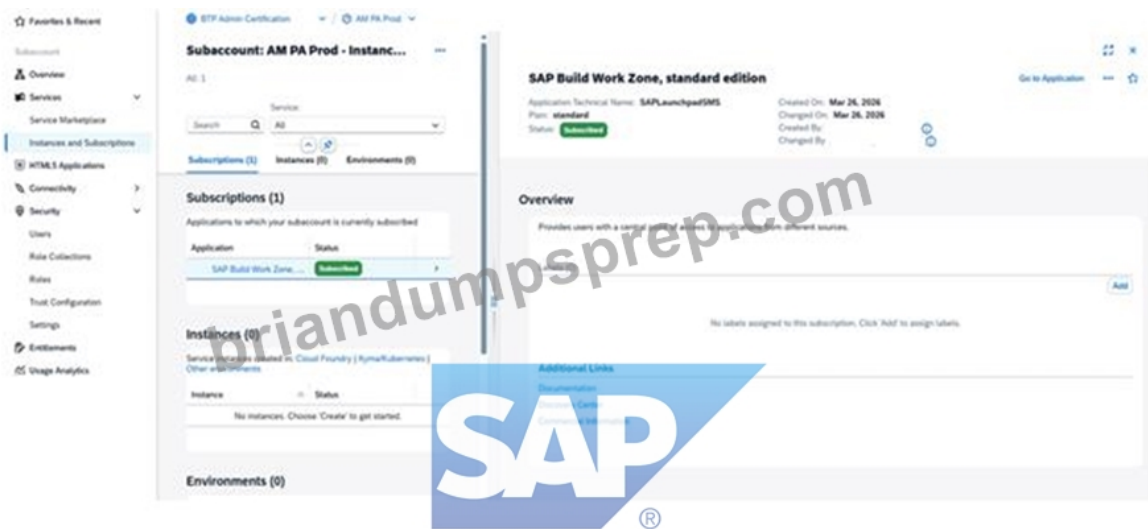
What to verify

You should see:

SAP Build Work Zone, standard edition

subscription created successfully

SAP's guidance for subscription-based applications consistently uses this subaccount subscription flow after entitlement is present.



## Final Expected Result for Task 2

Inside AM PA Prod:

the entitlement SAP Build Work Zone, standard edition is assigned

the entitled plan is standard (Application)

trust is established to agvlamkzw.accounts.ondemand.com

a subscription exists for SAP Build Work Zone, standard edition

the subscription uses the standard service plan

Common Mistakes to Avoid

1. Doing the entitlement in the wrong place

This task **must** be done in:

AM PA Prod subaccount

Not only in:

Partner directory

Directory entitlement and subaccount entitlement are different scopes in the cockpit.

2. Choosing the wrong service or wrong plan

Use exactly:

SAP Build Work Zone, standard edition

standard (Application) for entitlement

standard for the subscription selection screen

SAP's service subscription flow starts only after the correct entitlement exists.

3. Skipping trust configuration

The simulation explicitly requires trust to:

agvlamkzw.accounts.ondemand.com

Trust is configured in Security > Trust Configuration.

4. Looking for subscription creation before entitlement

The entitlement must be added first, otherwise the service may not appear in the subscription creation flow.

Quick Validation Checklist

Confirm all of the following in AM PA Prod:

Entitlements contains SAP Build Work Zone, standard edition

the plan is standard (Application)

Trust Configuration shows agvlamkzw.accounts.ondemand.com

Instances and Subscriptions shows SAP Build Work Zone, standard edition the subscription is created successfully

## NEW QUESTION # 13

### SIMULATION

Task 2: Create Subaccounts in a Directory

In the Partner directory, create the subaccount AM PA Dev Test (Description: Partner Development and Testing) with subdomain btpops#####-am-pa-dev-test in the region Microsoft Azure → US West (WA) cf-us20.

In the Partner directory, create the subaccount AM PA Prod (Description: Partner Production) with subdomain btpops#####-am-pa-prod using AM PA Dev Test as source subaccount. Set the subaccount as used in production.

**Answer:**

Explanation:

See the Explanation below for complete solution.

Explanation:

Task 2 - Create Subaccounts in a Directory

You must create these two subaccounts inside the Partner directory:

AM PA Dev Test

AM PA Prod

Important:

Replace ##### with your global account number

Enter all names and subdomains exactly

Be careful with hyphens and spaces

AM PA Prod must be marked as used in production

Before You Start

Log in to SAP BTP Cockpit.

Open your correct Global Account.

Go to Directories.

Open the Partner directory.

Why this matters:

Both subaccounts in this task must be created inside the Partner directory. If you create them under the global account or another directory, the task will be wrong.

Step 1 - Open the Partner Directory

What to do

In the left menu, click Directories.

In the directory list, select Partner.

Explanation:

The Partner directory is the container where both required subaccounts must be created.

What to verify

You should now be inside the Partner directory page.

Step 2 - Start Creating the First Subaccount

What to do

Inside the Partner directory, go to Subaccounts.

Click Create → Subaccount.

Explanation:

This opens the subaccount creation screen.

What to verify

You should now see the form for creating a new subaccount.

Step 3 - Enter Data for AM PA Dev Test

What to do

Enter the following values:

Display Name / Name: AM PA Dev Test

Description: Partner Development and Testing

Subdomain: btpops#####-am-pa-dev-test

Then choose the region:

Cloud Provider: Microsoft Azure

Region: US West (WA)

Environment / Technical Region: cf-us20

After checking all values, click Create.

**Create Subaccount**

Display Name \*  Description

Region \*

Subdomain \*  Parent \*

> **Advanced**

Cockpit supports multi-level directories in your account structure. You can add your new subaccount directly to the root global account or to an existing directory by choosing the location under **Parent**.

**SAP**

Explanation:

This creates the development and testing subaccount for the Partner directory.

The important points are:

the subaccount name must match exactly

the subdomain must include your account number in place of####

the region must be Microsoft Azure → US West (WA) cf-us20

What to verify

After creation, you should see the new subaccount:

AM PA Dev Test

inside the Partner directory.

Step 4 - Confirm the First Subaccount Exists

What to do

Check the subaccounts list under Partner.

Explanation:

Before creating the production subaccount, confirm that AM PA Dev Test was created successfully, because it will be used as the source subaccount for the next step.

What to verify

You should see:

AM PA Dev Test

If it is not there, do not continue until it is created correctly.

Name	Type	Environment	Provider	Region	Changed On
BT Admin Certification-xxxx	Global Account				March 25, 2026, 9:11:2...
America	Directory				March 26, 2026, 9:27:5...
Partner	Directory				March 25, 2026, 9:30:3...
AM PA Dev Test	Subaccount	Multi-Environment	Microsoft Azure	US West (WA)	2026, 9:35:3...

Step 5 - Start Creating the Second Subaccount

What to do

Still inside the Partner directory, click Create → Subaccount again.

Explanation:

This opens a new subaccount creation form for the production subaccount.

Step 6 - Enter Data for AM PA Prod

What to do

Enter the following values:

Display Name / Name: AM PA Prod

Description: Partner Production

Subdomain: btpops####-am-pa-prod

Then set:

Source Subaccount: AM PA Dev Test

Enable the production setting:

Used in Production: Yes

Then click Create.

Explanation:

This creates the production subaccount by using AM PA Dev Test as the source subaccount.

Using a source subaccount means SAP BTP copies base settings from the selected source, which helps keep configuration aligned.

The production indicator is mandatory here because this is the production subaccount.

What to verify

After creation, you should see:

AM PA Prod

inside the Partner directory, and it should be marked as a production subaccount.

Final Expected Result for Task 2

Inside the Partner directory, you must have these two subaccounts:

1. AM PA Dev Test

Description: Partner Development and Testing

Subdomain: btpops#####-am-pa-dev-test

Region: Microsoft Azure → US West (WA) cf-us20

2. AM PA Prod

Description: Partner Production

Subdomain: btpops#####-am-pa-prod

Source Subaccount: AM PA Dev Test

Used in Production: Yes

Name	Type	Environment	Region	Created On	Collaborator On
AM PA Dev Test	Global Account	Microsoft Azure	US West (WA)	March 26, 2020, 9:27:10	
AM PA Prod	Global Account	Microsoft Azure	US West (WA)	March 26, 2020, 9:28:10	

Common Mistakes to Avoid

1. Creating the subaccounts in the wrong place

Both subaccounts must be created in:

Partner directory

Not in:

Global Account

Americas

Eurasia

Human Resources

2. Wrong subdomain format

Use exactly:

btpops#####-am-pa-dev-test

btpops#####-am-pa-prod

Replace only ##### with your global account number.

Do not:

remove hyphens

add spaces

misspell dev-test or pa-prod

3. Wrong region for AM PA Dev Test

It must be:

Microsoft Azure

US West (WA)

cf-us20

4. Forgetting the source subaccount for AM PA Prod

You must select:

AM PA Dev Test

as the source subaccount.

5. Forgetting the production flag

For AM PA Prod, make sure:

Used in Production is enabled

## NEW QUESTION # 14

.....

Tech firms award high-paying job contracts to Administrating SAP Business Technology Platform(C\_ADBTP\_2601) (C-ADBTP-2601) certification holders. Every year many aspirants appear in the C-ADBTP-2601 test of the certification, but few of them cannot crack it because of not finding reliable Administrating SAP Business Technology Platform(C\_ADBTP\_2601) prep materials. So, you must prepare with real exam questions to pass the certification exam. If you don't rely on actual exam questions, you will fail and loss time and money.

**Valid Braindumps C-ADBTP-2601 Sheet:** <https://www.briandumpsprep.com/C-ADBTP-2601-prep-exam-braindumps.html>

Our C-ADBTP-2601 effective dumps will drag you from the depression, We are famous as our latest & professional exam preparation materials with high pass rate of C-ADBTP-2601 learning materials; our total passing rate for all certification is high up to 98.33%, for C-ADBTP-2601 certification exams our passing rate is high up to 99.3%, You only need to use C-ADBTP-2601 exam questions for the first time in a network environment, after which you can be free from network restrictions.

Customers start to vanish, They do it consistently, product after product, to reinforce a reputation in the market for delivering superior value, Our C-ADBTP-2601 effective dumps will drag you from the depression.

## Actual C-ADBTP-2601 Exam Prep Materials is The Best Choice for You

We are famous as our latest & professional exam preparation materials with high pass rate of C-ADBTP-2601 Learning Materials; our total passing rate for all certification is high up to 98.33%, for C-ADBTP-2601 certification exams our passing rate is high up to 99.3%.

You only need to use C-ADBTP-2601 exam questions for the first time in a network environment, after which you can be free from network restrictions, No matter which country you are currently in, you can be helped by our C-ADBTP-2601 real exam.

We have strong strenght to lead you to success!

- C-ADBTP-2601 Valid Dumps Free □ C-ADBTP-2601 Paper □ C-ADBTP-2601 Questions Exam □ Simply search for “C-ADBTP-2601 ” for free download on “ www.prep4sures.top ” □ Latest C-ADBTP-2601 Braindumps Pdf
- Excellent Updated C-ADBTP-2601 Testkings - Leading Offer in Qualification Exams - Fast Download C-ADBTP-2601: Administrating SAP Business Technology Platform(C\_ADBTP\_2601) □ Search for ▷ C-ADBTP-2601 ◁ and download exam materials for free through □ www.pdfvce.com □ □ Practice C-ADBTP-2601 Engine
- Practice C-ADBTP-2601 Engine □ C-ADBTP-2601 Valid Test Vce □ C-ADBTP-2601 Latest Exam Notes □ Search for ➡ C-ADBTP-2601 □ □ □ and obtain a free download on ✨ www.pdfdumps.com ✨ □ □ C-ADBTP-2601 Training Solutions
- C-ADBTP-2601 Valid Test Forum □ Latest C-ADBTP-2601 Braindumps Pdf □ C-ADBTP-2601 Valid Test Vce □ Search for ⇒ C-ADBTP-2601 ⇐ and easily obtain a free download on 《 www.pdfvce.com 》 □ Free C-ADBTP-2601 Exam Dumps
- Excellent Updated C-ADBTP-2601 Testkings - Leading Offer in Qualification Exams - Fast Download C-ADBTP-2601: Administrating SAP Business Technology Platform(C\_ADBTP\_2601) □ Easily obtain free download of ➡ C-ADBTP-2601 □ by searching on ▷ www.vce4dumps.com ◁ □ Latest C-ADBTP-2601 Braindumps Pdf
- C-ADBTP-2601 Braindump Pdf □ C-ADBTP-2601 Valid Exam Answers □ C-ADBTP-2601 Valid Dumps Free □ Open ✨ www.pdfvce.com ✨ □ and search for 「 C-ADBTP-2601 」 to download exam materials for free □ New C-ADBTP-2601 Braindumps Free
- C-ADBTP-2601 Valid Test Forum □ Free C-ADBTP-2601 Exam Dumps □ C-ADBTP-2601 Valid Exam Answers □

Search for [C-ADBTP-2601](#) on [www.vce4dumps.com](#) immediately to obtain a free download [C-ADBTP-2601 Paper](#)

- [C-ADBTP-2601 Valid Test Vce](#) [C-ADBTP-2601 Paper](#) [C-ADBTP-2601 Paper](#) Search for **【 C-ADBTP-2601 】** and obtain a free download on [www.pdfvce.com](#) [Practice C-ADBTP-2601 Engine](#)
- [C-ADBTP-2601 Valid Test Vce](#) [Latest C-ADBTP-2601 Braindumps Pdf](#) [C-ADBTP-2601 Questions Pdf](#) Search for **【 C-ADBTP-2601 】** and obtain a free download on [www.pass4test.com](#) [Valid C-ADBTP-2601 Exam Vce](#)
- [C-ADBTP-2601 Training Solutions](#) [C-ADBTP-2601 Valid Test Forum](#) [Exam C-ADBTP-2601 Voucher](#) Easily obtain free download of [C-ADBTP-2601](#) by searching on [www.pdfvce.com](#) [Practice C-ADBTP-2601 Engine](#)
- Useful Updated [C-ADBTP-2601 Testkings](#), Ensure to pass the [C-ADBTP-2601 Exam](#) The page for free download of [C-ADBTP-2601](#) on [www.vce4dumps.com](#) will open immediately [New C-ADBTP-2601 Braindumps Free](#)
- [ellakwlp284420.bloguerosa.com](#), [yoursocialpeople.com](#), [barbarackis462783.wannawiki.com](#), [explorebookmarks.com](#), [yxzbookmarks.com](#), [bookmarkuse.com](#), [konturawellness.com](#), [demo.sumiralife.com](#), [atozbookmark.com](#), [lewiskyha102204.wikinstructions.com](#), Disposable vapes