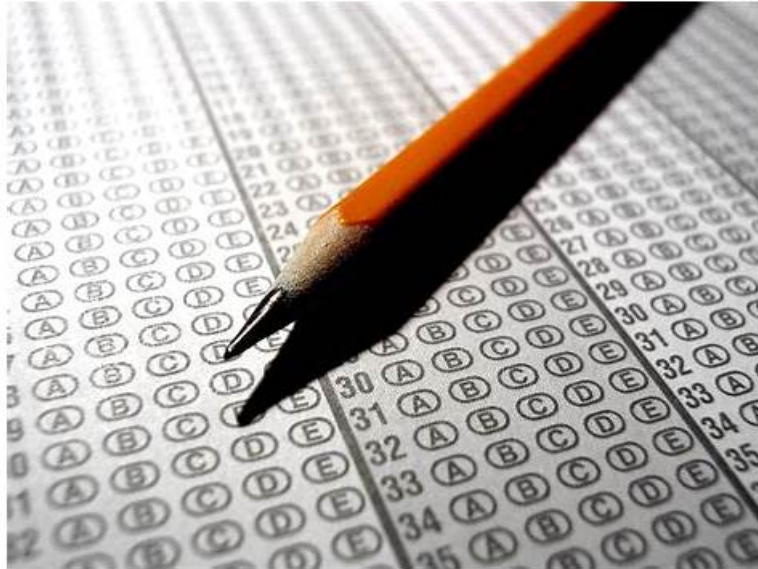


2026 High Hit-Rate 350-101 Exam Pattern | 100% Free 350-101 Valid Exam Camp



Real4Prep, as a provider, specializing in providing all candidates with 350-101 exam-related materials, focus on offering the most excellent dumps for the candidates. In contrast with other websites, Real4Prep is more trustworthy. Why? Because Real4Prep has many years of experience and our Cisco experts have been devoted themselves to the study of Cisco certification exam and summarize 350-101 Exam rules. Thus, Real4Prep exam dumps have a high hit rate. Meanwhile, it guarantees the qualification rate in the exam. Therefore, Real4Prep got everyone's trust.

Many exam candidates feel hampered by the shortage of effective 350-101 practice materials, and the thick books and similar materials causing burden for you. Serving as indispensable choices on your way of achieving success especially during this exam, more than 98 percent of candidates pass the exam with our 350-101 practice materials and all of former candidates made measurable advance and improvement. All 350-101 practice materials fall within the scope of this exam for your information.

>> 350-101 Exam Pattern <<

Implementing and Operating Cisco Wireless Core Technologies Exam Training Guide Improve Your Efficiency - Real4Prep

You must improve your skills and knowledge to stay current and competitive. You merely need to obtain the 350-101 certification exam badge in order to achieve this. You must pass the Implementing and Operating Cisco Wireless Core Technologies (350-101) exam to accomplish this, which can only be done with thorough exam preparation. Download the Cisco 350-101 Exam Questions right away for immediate and thorough exam preparation. We have thousands of satisfied customers around the globe so you can freely join your journey for the Implementing and Operating Cisco Wireless Core Technologies (350-101) certification exam with us.

Cisco Implementing and Operating Cisco Wireless Core Technologies Sample Questions (Q83-Q88):

NEW QUESTION # 83

Which function does FRA use to optimize client experience and network coverage?

- A. Dynamically adapts the roles of dual-band radios in an AP
- **B. Enhances roaming by redirecting the client to move to the appropriate AP**
- C. Implementation by local data path control
- D. Monitoring on the physical interface level in the AP

Answer: B

Explanation:

FRA (Flexible Radio Assignment) is a feature in Cisco wireless networks designed to optimize the client experience and enhance network coverage. FRA functions by managing roaming behavior and ensuring that clients are connected to the most appropriate access point (AP) based on signal quality and other factors. This helps in ensuring a seamless experience when clients move across coverage areas, by actively guiding them to the best AP.

The key functionality of FRA involves redirecting clients to the appropriate AP when they are experiencing suboptimal performance on the current AP, which is typically influenced by factors such as interference or distance. This optimization helps improve both coverage and user experience by making sure clients stay on the most optimal radio connection.

Option A, which refers to monitoring on the physical interface level, is not directly related to FRA but more to basic radio management. Option C, which mentions local data path control, refers to how data paths are managed locally within an AP but does not address the dynamic nature of client roaming. Option D, about dual-band radios, involves how radios are configured but does not directly describe FRA's function.

FRA is vital for dynamically enhancing wireless network performance, particularly in large, dense environments where clients are constantly moving.

NEW QUESTION # 84

What is a characteristic of 20 MHz channel width in a wireless network?

- A. Increases authentication handoff frequency
- B. Supports automatic client reassociation
- C. Narrowest channel width in the 2.4 GHz band
- D. Higher throughput than wider channels

Answer: C

Explanation:

In wireless networks, the 20 MHz channel width is the standard and narrowest channel allocation in the 2.4 GHz frequency band. Using narrower channels reduces adjacent-channel interference and allows for better coexistence in high-density environments, which is particularly important in the crowded 2.4 GHz spectrum.

A 20 MHz channel uses less RF bandwidth than 40 MHz or 80 MHz channels, providing more non-overlapping channels (channels 1, 6, and 11 in 2.4 GHz) to reduce co-channel interference. Option B is incorrect, as channel width does not inherently increase authentication handoff frequency; handoff behavior is determined by RSSI, client roaming thresholds, and 802.11r fast roaming settings. Option C describes client reassociation support, which is handled by the wireless controller and client firmware, not the channel width itself. Option D is incorrect because wider channels (40 MHz, 80 MHz) provide higher throughput than 20 MHz, at the expense of increased interference potential. Cisco Wireless Core Technologies emphasize that 20 MHz channels are preferred for dense deployments in the 2.4 GHz band to maximize non-overlapping channels and reduce interference, ensuring predictable coverage and reliable client connectivity. Reference topics: RF Fundamentals - 20 MHz channels, 2.4 GHz spectrum planning, interference management, channel allocation.

NEW QUESTION # 85

Exhibit:



```
configure terminal
wireless profile policy my-policy
[redacted]
vlan 100
no shutdown
end
```

Refer to the exhibit. An enterprise is deploying Cisco Catalyst 9800 WLCs and is using Catalyst Center as the management platform to oversee wireless access policies. To meet the organization's compliance requirements, all wireless endpoints must be evaluated with security posture validation before gaining access.

Which set of CLI commands must be added to the box in the code to complete the configuration?

- A. wireless profile policy my-policyaaa-override
- B. aaa-overridenac-policy
- C. aaa-overridenac
- D. wireless profile policyaaa-override

Answer: C

Explanation:

The correct configuration isaaa-overridefollowed bynacunder the existing Catalyst 9800 wireless policy profile. The exhibit already places the administrator in policy-profile configuration mode with wireless profile policy my-policy, so the missing commands must be policy-profile subcommands, not another profile declaration. Cisco's Catalyst 9800 configuration examples show the exact sequence: enter wireless profile policy < policy-profile-name > , enable aaa-override, enable nac, then configure VLAN and no shutdown.

aaa-override permits authorization attributes returned by AAA or Cisco ISE, such as VLAN, ACL, QoS, redirect ACL, or posture-related access controls, to override the locally defined policy. Cisco's documentation explicitly states that AAA override applies policies coming from AAA or ISE servers, while nac enables Network Access Control in the policy profile. This is the required behavior when endpoints must be posture- validated before normal network access is granted. Cisco also notes that NAC State is enabled in the policy profile and can only be enabled when AAA override is enabled.

Option A is invalid because nac-policy is not the correct CLI keyword. Options B and D omit NAC.

Reference topic:Client Connectivity Configuration - Catalyst 9800 policy profiles, AAA override, NAC State, posture enforcement, and ISE-based access control.

NEW QUESTION # 86

What is a feature of an RTS frame in the context of 802.11 frame types?

- A. It applies spectral mask for transmission.
- B. It provides navigation updates for roaming clients.
- C. It requests permission to send data on a channel.
- D. It compresses frames for bandwidth savings.

Answer: C

Explanation:

An RTS frame is an 802.11control frameused in the Request to Send/Clear to Send exchange. Cisco identifies RTS as a Request to Send frame and explains that 802.11 control frames assist in delivering data frames between stations. Cisco further states that the RTS/CTS function is optional, helps reduce collisions when hidden stations are associated to the same access point, and that a station sends an RTS frame as the first phase before transmitting a data frame.

Therefore, option B is correct because the RTS frame requests access to the wireless medium before data transmission. If the receiving station or AP replies with CTS, nearby stations defer transmission based on the duration information, reducing collision probability. This is especially relevant in hidden-node environments where two clients can hear the AP but cannot hear each other. Option A refers to RF spectral-mask compliance, which is a physical-layer regulatory concept. Option C confuses NAV behavior with roaming; RTS/CTS may influence virtual carrier sensing, not client roaming updates. Option D is unrelated because frame compression is not an RTS function. Reference topics:802.11 frame types, control frames, RTS/CTS, CSMA/CA, hidden-node mitigation, and medium reservation.

NEW QUESTION # 87

Refer to the exhibit.

```

WLC#show run | include wireless management
wireless management interface Vlan10

WLC#show run interface vlan 10
Building configuration...

Current configuration: 132 bytes
!
interface Vlan10
ip address 10.10.1.2 255.255.255.0
no ip proxy-arp
ip igmp version 3
end

```

An engineer is setting up a new WLC in a branch office. The IT security policy states that all management access must use encrypted protocols, administrators will connect remotely, and network scans will be run to check for any noncompliant management protocol exposure. Which action must the engineer take to achieve the required management access policy?

- A. Permit only HTTP, Telnet, and SSH across all VLANs for 10.10.1.0/24.
- B. Permit console access for 10.10.1.0/24 only with HTTP disabled.
- C. Enable Telnet, SSH, and HTTPS across the management and guest interfaces.
- D. Enable HTTPS and SSH, and disable HTTP and Telnet on the WLC.

Answer: D

Explanation:

The correct action is to expose only encrypted management services: HTTPS for WebUI administration and SSH for remote CLI administration. The exhibit confirms the WLC wireless management interface is VLAN

10 with IP address 10.10.1.2, but interface placement alone does not enforce secure management protocol policy. Cisco Catalyst 9800 documentation identifies web admin settings as controller management configuration that determines administrator access, protocols, and interfaces for remote management. Cisco further states that administrators can connect securely over HTTPS, while HTTP "is not a secure connection," and that HTTPS encrypts data to and from the server.

For CLI access, Cisco's Catalyst 9800 Secure Shell guidance states that SSH enables secure remote access, and using transport input ssh prevents non-SSH Telnet connections, limiting the device to SSH-only access.

Therefore, options A and B violate policy because they permit Telnet and/or HTTP. Option C fails because console access is local, not remote, and disabling only HTTP still leaves Telnet exposure unresolved.

Reference topics: Wireless Monitoring and Management - WLC management access, secure administration, HTTPS, SSH, and management-plane hardening.

NEW QUESTION # 88

.....

Real4Prep is the website that has been known to learn IT technology. Real4Prep gets high praise from our customers in real test questions and answers. It is the real website that can help you to pass Cisco 350-101 certificate. Why is Real4Prep very popular? Because Real4Prep has a group of IT elite which is committed to provide you with the best test questions and test answers. Therefore, Real4Prep will provide you with more and better certification training materials to satisfy your need.

350-101 Valid Exam Camp: <https://www.real4prep.com/350-101-exam.html>

And we promise to full refund you when you failed the exam with our 350-101 dump torrent, To gain a full understanding of our product please firstly look at the introduction of the features and the functions of our 350-101 exam torrent, This is because the exam information provided by Real4Prep 350-101 Valid Exam Camp will certainly be able to help you pass the exam, Besides, we have the promise of “No help, full refund” which can full refund your loss of the 350-101 premium files if you fail the exam with our dumps.

You should be able to do them and sleep at night, The clock is ticking, And we promise to full refund you when you failed the exam with our 350-101 Dump Torrent.

To gain a full understanding of our product 350-101 Exam Pattern please firstly look at the introduction of the features and the functions of our 350-101 exam torrent, This is because the exam 350-101 Valid Exam Camp information provided by Real4Prep will certainly be able to help you pass the exam.

Cisco 350-101 Exam Pattern | Free Download 350-101 Valid Exam Camp: Implementing and Operating Cisco Wireless Core Technologies

Besides, we have the promise of “No help, full refund” which can full refund your loss of the 350-101 premium files if you fail the exam with our dumps, And we can 350-101 ensure your success for we have been professional in this career for over 10 years.

- Marvelous 350-101 Exam Pattern to Obtain Cisco Certification □ Easily obtain free download of [350-101] by searching on { www.prep4away.com } □ Reliable 350-101 Test Braindumps
- 2026 350-101: Professional Implementing and Operating Cisco Wireless Core Technologies Exam Pattern □ Search for ☀ 350-101 □☀□ and download exam materials for free through ➡ www.pdfvce.com □ □ Reliable 350-101 Test Tutorial
- Cisco 350-101 Exam Pattern: Implementing and Operating Cisco Wireless Core Technologies - www.validtorrent.com 365 Days Free Updates □ Open ☀ www.validtorrent.com □☀□ enter [350-101] and obtain a free download □ Test 350-101 Duration
- 2026 350-101 Exam Pattern | Pass-Sure 100% Free 350-101 Valid Exam Camp □ Search for (350-101) and obtain a free download on 【 www.pdfvce.com 】 □ New 350-101 Exam Practice
- Latest 350-101 Test Sample □ 350-101 Reliable Test Guide □ Test 350-101 Duration □ Simply search for 「 350-101 」 for free download on ☀ www.vce4dumps.com □☀□ □ Test 350-101 Duration
- 2026 100% Free 350-101 –High Pass-Rate 100% Free Exam Pattern | Implementing and Operating Cisco Wireless Core Technologies Valid Exam Camp □ Enter □ www.pdfvce.com □ and search for (350-101) to download for free □ □ New 350-101 Study Materials
- Cisco 350-101 Exam Pattern: Implementing and Operating Cisco Wireless Core Technologies - www.prep4sures.top 365 Days Free Updates □ Easily obtain free download of “ 350-101 ” by searching on ➡ www.prep4sures.top □ □ New 350-101 Exam Practice
- 2026 350-101: Professional Implementing and Operating Cisco Wireless Core Technologies Exam Pattern □ Copy URL ➤ www.pdfvce.com □ open and search for ➡ 350-101 □ to download for free □ 350-101 Test Review
- Don't Miss Up to 365 Days of Free Updates - Buy 350-101 Questions Now □ Open 「 www.troytecdumps.com 」 enter ☀ 350-101 □☀□ and obtain a free download □ Pdf 350-101 Braindumps
- Don't Miss Up to 365 Days of Free Updates - Buy 350-101 Questions Now □ Open “ www.pdfvce.com ” enter □ 350-101 □ and obtain a free download □ 350-101 Valid Study Notes
- Reliable 350-101 Test Tutorial □ Reliable 350-101 Test Tutorial □ Latest 350-101 Study Guide □ ► www.troytecdumps.com ◀ is best website to obtain ► 350-101 □ for free download □ 350-101 Valid Study Notes
- idarwdt508483.tusblogos.com, cryptocoaching.academy, zaynabsyrt959490.blog-eye.com, bookmarkfly.com, jaysondbew683585.actoblog.com, socialtechnet.com, lanceqwhd446823.activablog.com, haarisbqcu152200.blogsvila.com, blanchenfil083092.bloginder.com, zp.donglionline.com, Disposable vapes