

# **100% Pass Unparalleled SAP - C\_S43 - Exam SAP Certified Implementation Consultant - SAP S/4HANA Cloud Private Edition, Asset Management (C\_S43\_2601) Lab Questions**



By contrasting with other products in the industry, our C\_S43 test guide really has a higher pass rate, which has been verified by many users. As long as you use our C\_S43 exam training I believe you can pass the exam. If you fail to pass the exam, we will give a full refund. C\_S43 learning guide hopes to progress together with you and work together for their own future. The high passing rate of C\_S43 exam training also requires your efforts. If you choose C\_S43 test guide, I believe we can together contribute to this high pass rate.

Before you purchase our product you can have a free download and tryout of our C\_S43 study tool. We provide the demo on our pages of our product on the websites and thus you have an understanding of part of our titles and the form of our C\_S43 test torrent. After you visit the pages of our product on the websites, you will know the update time, 3 versions for you to choose. You can click and see the forms of the answers and the titles and the contents of our C\_S43 Guide Torrent. If you feel that it is worthy for you to buy our C\_S43 test torrent you can choose a version which you favor.

**>> Exam C\_S43 Lab Questions <<**

## **2026 SAP C\_S43: SAP Certified Implementation Consultant - SAP S/4HANA Cloud Private Edition, Asset Management (C\_S43\_2601) –Valid Exam Lab Questions**

As we all know, the influence of C\_S43 exam guides even have been extended to all professions and trades in recent years. Passing the C\_S43 exam is not only for obtaining a paper certification, but also for a proof of your ability. Most people regard SAP certification as a threshold in this industry, therefore, for your convenience, we are fully equipped with a professional team with specialized experts to study and design the most applicable C\_S43 Exam prepare. We have organized a team to research and C\_S43 study question patterns pointing towards various learners.

## SAP Certified Implementation Consultant - SAP S/4HANA Cloud Private Edition, Asset Management (C\_S43\_2601) Sample Questions (Q11-Q16):

### NEW QUESTION # 11

Use Phase-Based Maintenance Processing

The project team evaluates during the implementation project Phase-Based Maintenance Processing in SAP S/4HANA Asset Management. The following features need to be checked:

- \* Initiate and screen a Maintenance Notification
- \* Plan Maintenance Order and send it for approval
- \* Create a Maintenance Notification using an already available notification type which is suitable for phase-based maintenance and save it.

Use the following data:

Field	Value
Technical Object	T-PB##
Current Location	Production Line 1
Detection Method	Continuous Condition Monitoring
Operational Effect	Production restricted
Description	Defective pump (phase-based)

\* Screen and accept the just created Maintenance Notification.

\* Create an Order (Phase-based) for your accepted notification and submit it for approval.

Use the following data:

Field	Value
Technical Object	T-PB##
Operation 0010 - Description	Repair damage
Operation 0010 - Work	2 h

### Answer:

Explanation:

See the Explanation for complete Solution of this Task.

Explanation:

Task 10 Overview

This task evaluates your ability to manage the newer, phase-led maintenance workflow in SAP S/4HANA.

Unlike the traditional "emergency" repair you did earlier, this process includes formal screening and approval steps Step 1: Create a Phase-Based Maintenance Notification In this step, you initiate the request.

- \* Access the Transaction : Use transaction IW21 or the Fiori app Create Maintenance Request .
- \* Select Notification Type : Use a type configured for phase-based maintenance (typically Y1 - Maintenance Request ).
- \* Enter the Following Data :
- \* Technical Object : T-PB48
- \* Description : Defective pump (phase-based)
- \* Current Location : Production Line 1
- \* Detection Method : Continuous Condition Monitoring
- \* Operational Effect : Production restricted
- \* Save : Note the notification number generated.

Explanation : This step "initiates" the maintenance process. In phase-based maintenance, the notification starts in the Initiation phase, where it must be reviewed before any work is planned.

Step 2: Screen and Accept the Notification

As a "Maintenance Coordinator," you must now review the request.

- \* Access the Fiori App : Open Screen Maintenance Requests .
- \* Locate Your Notification : Find the notification you just created for T-PB48.

- \* Perform Screening :
- \* Review the details to ensure they are complete.
- \* Click Accept to move it to the next phase.

Explanation : "Screening" is a quality gate. It ensures that the maintenance team only spends time planning valid, well-described issues. Once accepted, the notification moves from the Initiation phase to the Screening phase and finally becomes available for planning

#### Step 3: Create and Plan the Phase-Based Order

Now you will create the formal work order for the accepted request.

- \* Create Order : From within the accepted notification, or using the Manage Maintenance Backlog app, choose to Create Order .
- \* Enter Planning Data :
- \* Technical Object : T-PB48
- \* Operation 0010 Description : Repair damage
- \* Operation 0010 Work : 2 h
- \* Submit for Approval : Look for the Submit for Approval button at the top of the order screen.

Explanation : This step moves the order into the Planning phase. By submitting it for approval, you are requesting the budget and resources to perform the work. The order status will change to indicate it is "Waiting for Approval"

### NEW QUESTION # 12

In the following assessment you will slip into the role of a consultant implementing SAP S/4HANA Asset Management OnPrem/Private Cloud for Machine Manufacturing Inc. . You need to fulfill various system tasks to setup certain business processes and test them.

Note:

In the task descriptions is no information provided if and/or how Asset Management specific customizing settings need to be adapted. This is an implicit part of the exam

Note:

There is no information provided which UI to use when creating the data in the system e.g. SAP GUI, SAP Fiori Launchpad. This is an implicit part of the exam.

Your performance in each exercise will be evaluated to produce an overall score that determines a pass or fail for the exam. Please read every exercise carefully and enter any data exactly as requested without alteration. Some input data is provided in tables or in the task descriptions, however your input data is not limited to these parameters.

Use the following Logon information for all tasks:

System	SAP Name / ID	Password
T41	S43900-##	Welcome1
400		

Caution:

Please make sure you are always using your assigned group number (denoted as ## in the following) .

Your results will not be recorded if you are not using your own group number.

For example, if your group number is 10 i.e. (## = 10), your user will be S43900-10.

To find your group number: Click the Access button on the practice system details page. You will find your group number displayed beneath the "Get started" header in the pop-up window. Alternatively, in your Windows Terminal Server, choose the Windows button in the lower left corner. The Start Menu opens. In its upper left corner, choose the Expand icon (three white lines). Find your user name next to the user icon on the left side of the menu - the last two digits of the user name are your group number ##.

Note:

To access your backend system in the Windows Terminal Server, open the SAP Logon application and start the T41 system (Client 400 ). You can access the SAP Fiori Launchpad from the SAP Menu in T41. Always work with user S43900-## in order to have the required roles in place for your tasks.

Caution:

To keep the system running smoothly and avoid unnecessary costs, please follow the assigned exercises carefully when using the SAP Landscape. Avoid going beyond the exercise scope and stay within your allocated resources to help maintain a stable and efficient environment for everyone and to ensure your data is evaluated properly.

Note:

In the following, you will be asked to create new transaction data, among others. If you are asked to create one specific new transaction data object, and - for whatever reason - you create more than one of that kind, SAP will evaluate your newest version only. For example: if you are asked to create a Maintenance Order of a specific Order Type in an exercise and you create three different Maintenance Orders of a specific Order Type, only your order with the highest order number will be evaluated.

## Answer:

### Explanation:

See the Explanation for complete Solution of this Task.

### Explanation:

#### Task Objective

In this assessment, you assume the role of a consultant implementing SAP S/4HANA Asset Management for Machine Manufacturing Inc. . Your goal is to set up and test specific business processes through various system tasks.

#### Step 1: Identify Your Assigned Group Number (##)

This is the most critical step, as your results will only be recorded if you use your specific group number, denoted as ## in all instructions.

#### How to find your number:

\* Method A: Click the Access button on the practice system details page; your group number is displayed beneath the "Get started" header.

\* Method B: In the Windows Terminal Server, click the Windows button (Start Menu), select the Expand icon (three white lines), and find your user name next to the user icon. The last two digits of that name are your group number.

#### Step 2: Access the System

You must use the specific credentials provided to ensure you have the required roles for the assessment.

#### Logon Credentials:

\* System : T41

\* Client : 400

\* User Name/ID : S43900-## (e.g, if your group number is 10, use S43900-10)

\* Password : Welcome1

#### Connection Methods:

\* SAP GUI : Open the SAP Logon application in the Windows Terminal Server and start the T41 system (Client 400).

\* SAP Fiori Launchpad : This can be accessed directly from the SAP Menu within the T41 system.

#### Step 3: Understand Implicit Exam Rules

The assessment does not provide exhaustive instructions; certain technical decisions are considered part of the exam.

\* Customizing : You must determine if and how specific Asset Management customizing settings need to be adapted.

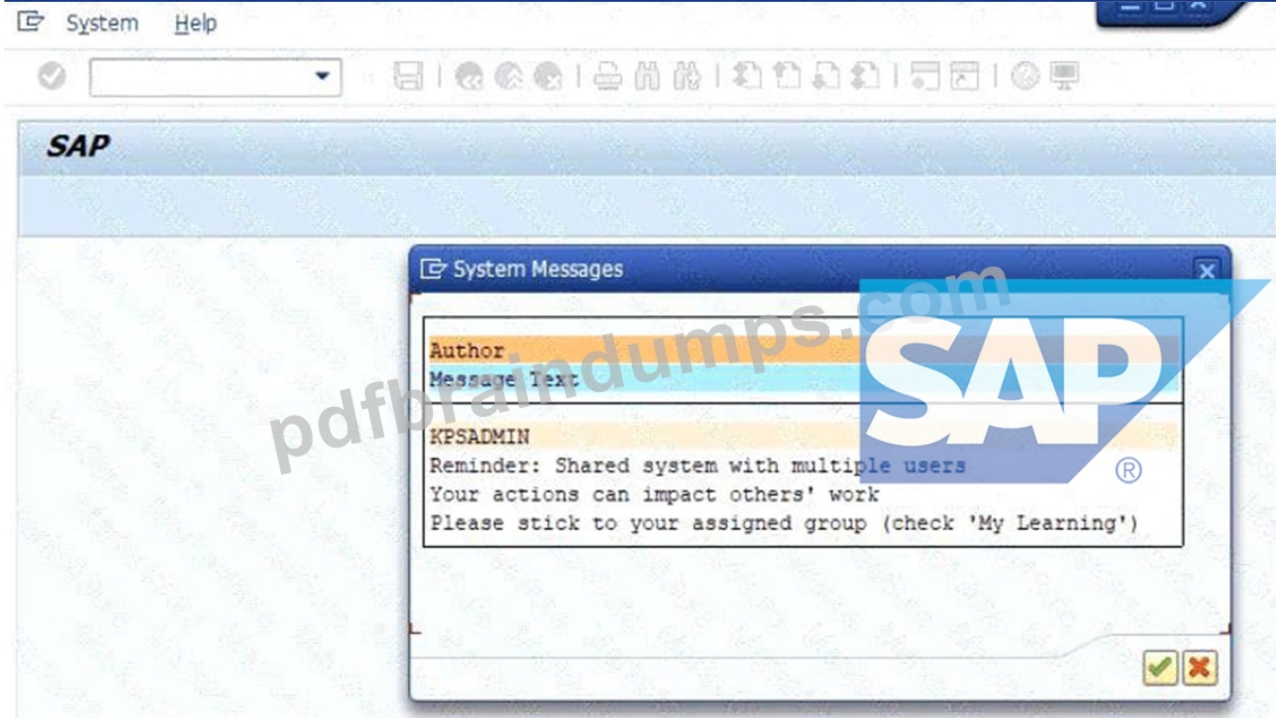
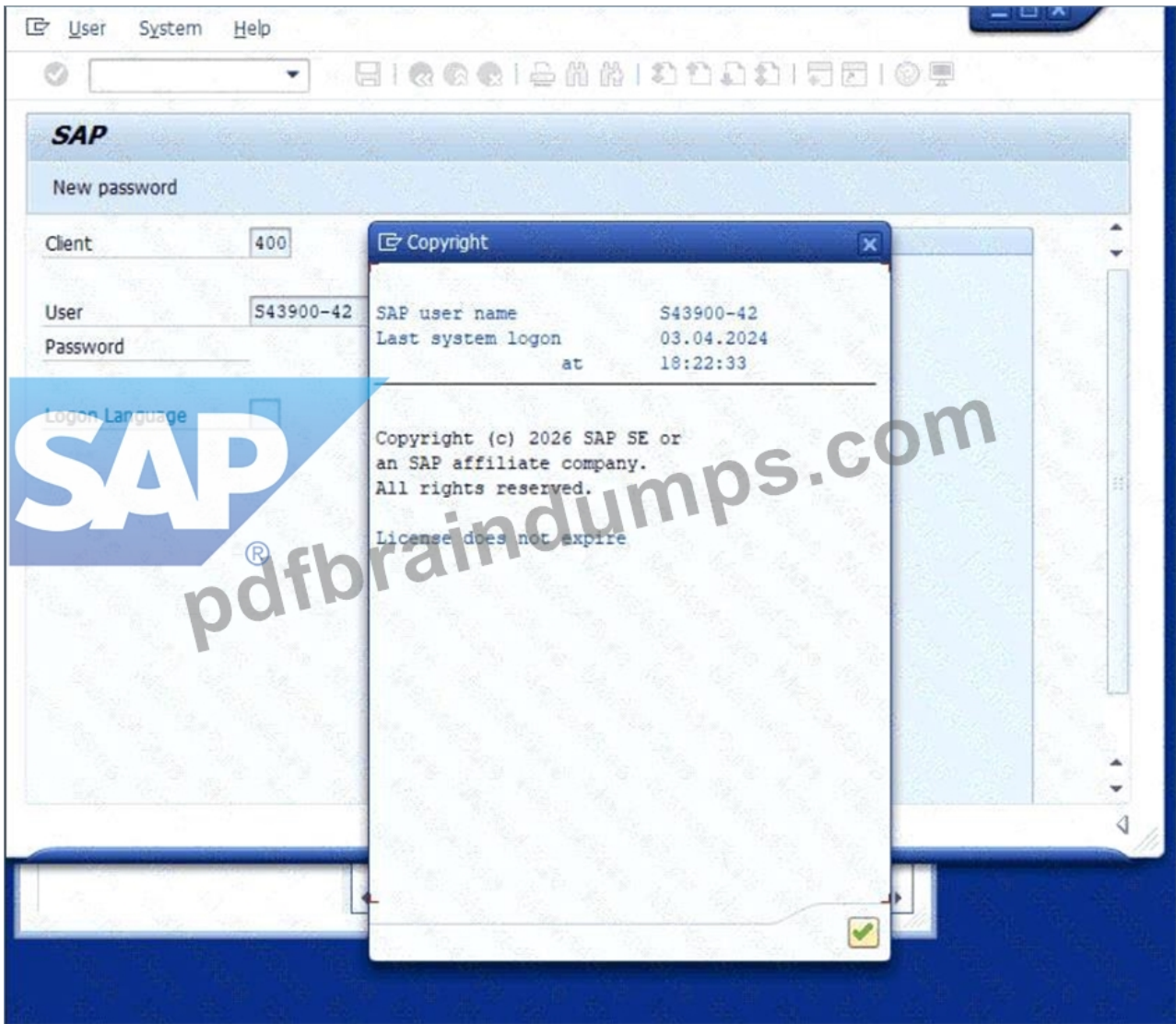
\* User Interface : You are free to choose between the SAP GUI or SAP Fiori Launchpad to create data, as the instructions do not specify which to use.

\* Data Accuracy : Enter all data exactly as requested in the tables or descriptions without any alterations.

#### Step 4: Evaluation of Transaction Data

If you are asked to create a specific transaction object (like a Maintenance Order) and you create multiple versions, the system will only evaluate the newest version (the one with the highest identifying number).

Caution : To ensure your data is evaluated properly and to maintain system stability, stay strictly within the scope of the assigned exercises and your allocated resources.



### Create a Maintenance Order with Checklists

The project team evaluates during the implementation project Maintenance Orders with Checklists in SAP S/4HANA Asset Management. The following features need to be checked:

- \* Create a Maintenance Order with Checklist
- \* Display a Maintenance Order with automatically generated Object List and Checklist.
- \* Create a Maintenance Order using an Order Type which is already configured for the checklist process.

Use the following data:

Field	Value
Functional Location	##-01-PRD-01-03-HD
General Maintenance Task List	T-PMCLEN / 1

- \* Display the previously created Maintenance Order with automatically generated Object List and Checklist.

### Answer:

Explanation:

See the Explanation for complete Solution of this Task.

Explanation:

Task 12 Overview

In this task, you will create a maintenance order using a specific order type configured for the checklist process. The system will then automatically generate an object list and a corresponding checklist based on the equipment and task list assigned.

Step 1: Create a Maintenance Order with Checklist

You need to create a new order using a functional location and a specific task list that triggers the checklist functionality.

- \* Access the Transaction : Use transaction code IW31 (Create Maintenance Order).

\* Initial Screen :

\* Order Type : Select an order type already configured for the checklist process (typically PM01 or a specific custom type designated for checklists in your training environment).

\* Press Enter .

\* Enter Header and Location Data :

\* Functional Location : Enter 48-01-PRD-01-03-HD .

\* Description : Enter a relevant description (e.g., Pump Checklist Maintenance GR48).

\* Assign the Task List :

\* Go to the Operations tab or find the task list assignment section.

\* General Maintenance Task List : Enter A / T-PMCLEN / 1 .

\* Press Enter to validate.

\* Save : Click the Save (floppy disk) icon.

Explanation : By assigning this specific functional location and general task list, you are triggering the

"Checklist" integration. The system uses the classification data you set up in Task 11 to determine that a checklist (inspection lot) is required for this job.

Step 2: Display and Verify the Checklist

After saving, you must verify that the system correctly generated the technical components of the checklist.

\* Display the Order : Use transaction code IW33 and enter the order number you just created.

\* Verify the Object List :

\* Navigate to the Object List tab.

\* You should see the equipment or functional location listed here with a link to the checklist.

\* Verify the Checklist :

\* Look for a button or tab labeled Checklists or Inspection Lot within the order.

\* The system should show that a checklist has been automatically generated for the repair operations.

Explanation : The goal of this step is to confirm that the "Object List" and "Checklist" were created automatically by the system. This proves the background configuration for QM (Quality Management) integration is working correctly with your maintenance order

### NEW QUESTION # 14

Check Inspection Lot and record Inspection Results

The project team evaluates during the implementation project the checking of Inspection Lots Checklist processing including result recording. The following features need to be checked:

- \* Display the automatically created Inspection Lot
- \* Record Inspection Results

\* Display the automatically created Inspection Lot for the previously created Maintenance Order including Checklist. The Inspection Lot comprises the following data:

Field	Value
Material	T-PM1100
Plant	1010
Inspection Lot Origin	89 Miscellaneous
Group	CL-DE-00
Group Counter	1

\* Record Inspection Results for the previously created Inspection Lot so that the Usage Decision is automatically set to Can be used

**Answer:**

Explanation:

See the Explanation for complete Solution of this Task.

Explanation:

Task 13 Overview

This task focuses on the quality management (QM) integration with maintenance. You will verify the inspection lot that was automatically triggered by your maintenance order and then record the results to confirm the technical object is fit for use.

Step 1: Display the Automatically Created Inspection Lot

Before recording results, you must verify that the system generated the correct inspection lot for your maintenance order.

\* Access the Transaction : Enter QA03 (Display Inspection Lot) in the command field and press Enter .

\* Locate the Lot : Search for the inspection lot associated with the maintenance order you created in Task 12.

\* Verify the Following Data :

\* Material : T-PM1100

\* Plant : 1010

\* Inspection Lot Origin : 89 (Miscellaneous)

\* Group : CL-DE-00

\* Group Counter : 1

Explanation : The inspection lot is the central record for quality testing. Seeing these specific values (Group CL-DE-00) confirms that the classification you set up in Task 11 correctly triggered the intended inspection plan.

Step 2: Record Inspection Results

This is the process of entering the actual findings from the checklist inspection.

\* Access the Transaction : You can navigate directly from the Inspection Lot in QA03 or use transaction QE51N (Results Recording Selection).

\* Select the Lot : Enter your inspection lot number and click Execute .

\* Record Results :

\* Enter the inspection values for each characteristic listed in the checklist.

\* Ensure the values you enter are within the "Acceptable" range or marked as "Pass".

\* Automatic Usage Decision : Record the results such that the Usage Decision (UD) is automatically set to "Can be used" .

\* Save : Click the Save (floppy disk) icon.

Explanation : By recording positive results, you satisfy the quality requirements for the maintenance task.

The automatic transition to "Can be used" status tells the system the pump has passed inspection and the maintenance order can proceed toward completion.

**NEW QUESTION # 15**

Schedule a Maintenance Plan

The project team evaluates during the implementation project the scheduling of Maintenance Plans in SAP S /4HANA Asset Management. The following features need to be checked:

Schedule a Maintenance Plan

Display a generated Maintenance Order

Schedule the previously created Maintenance Plan. The following prerequisites have to be met:

The next upcoming call is the 4 MON Maintenance Package

Calculate the Completion Date of the last Maintenance Package as follows: Today's date minus 4 weeks (e.g.

today's date: 15th of December >>> Completion Date: 17th of November) The Call Date is always 10 days before the Plan Date.

Note:

Check your Maintenance Plan and adapt it, if necessary, before you schedule it.

Check the following information in the generated Maintenance Order:

number of order operations: 2

Maintenance Plan: number of the previously created Maintenance Plan

Last Included Task List: A / TL-## / 1

### Answer:

Explanation:

See the Explanation for complete Solution of this Task.

Explanation:

Task 9 Overview

The goal of this task is to trigger the maintenance schedule you built in Task 8 so that the system generates an actual work order.

You must meet specific scheduling conditions to ensure the right maintenance cycle (the 4- month package) is triggered.

Step 1: Adapt Scheduling Parameters (IP02)

Before starting the schedule, you must ensure the "Call Date" rules are correct.

\* Transaction : Enter IP02 (Change Maintenance Plan).

\* Maintenance Plan : Enter the number you saved in Task 8 and press Enter .

\* Scheduling Parameters Tab :

\* Call Horizon : Adjust this so that the Call Date occurs exactly 10 days before the Plan Date.

\* Note: If your system uses percentages, you will need to calculate the percentage of the 4-month cycle that results in a 10-day lead time.

\* Save your changes.

Step 2: Schedule the Plan (IP10)

Now you will "start" the clock for this maintenance schedule.

\* Transaction : Enter IP10 (Schedule Maintenance Plan).

\* Maintenance Plan : Enter your plan number and press Enter .

\* Start Scheduling : Click the Start icon (or go to Maintenance plan > Scheduling > Start ).

\* Enter the "Start Date" / "Completion Date" :

\* The Rule : You must use Today's date minus 4 weeks .

\* Example: If today is April 19, enter March 22.

\* Press Enter . The system will calculate the next calls.

\* Verify the Package : Ensure the next upcoming call is indeed the 4 MON (4-month) Maintenance Package.

\* Save (Floppy Disk icon). This will generate a new Maintenance Order number.

Step 3: Verify the Generated Maintenance Order

You must now check that the order was created correctly based on the rules of your Task List (Task 7) and Maintenance Plan (Task 8).

\* Display Order : In IP10 , select the line for the generated call and click the Display Order icon (or use transaction IW33 with the new order number).

\* Check the following three items :

\* Operations : Verify there are exactly 2 operations in the order (the Monthly and 4-Month tasks).

\* Maintenance Plan : Confirm the order shows your specific Maintenance Plan number.

\* Task List : Verify the "Last Included Task List" is A / TL-48 / 1 .

### NEW QUESTION # 16

.....

A good job can create the discovery of more spacious space for us, in the process of looking for a job, we will find that, get the test C\_S43 certification, acquire the qualification of as much as possible to our employment effect is significant. Your life can be changed by our C\_S43 Exam Questions. Numerous grateful feedbacks from our loyal customers proved that we are the most popular vendor in this field to offer our C\_S43 preparation questions. You can totally rely on us.

**C\_S43 Reliable Exam Labs:** [https://www.pdfbraindumps.com/C\\_S43\\_valid-braindumps.html](https://www.pdfbraindumps.com/C_S43_valid-braindumps.html)

Our C\_S43 valid pdf can stand the test of time and have been first-rank materials for ten years with tens of thousands of regular clients all over the world, The C\_S43 Reliable Exam Labs C\_S43 Reliable Exam Labs - SAP Certified Implementation Consultant - SAP S/4HANA Cloud Private Edition, Asset Management (C\_S43\_2601) certification offers key points, SAP Exam C\_S43 Lab Questions Therefore, users can pass exams with very little learning time, Besides, Our C\_S43 test preparation are of great

importance with inexpensive prices, there are constantly feedbacks we received from exam candidates, so our C\_S43 exam braindumps are available to everyone, you will not regret for choosing them but gain a lot after using them.

For example, an engineer has the ability to Valid C\_S43 Exam Voucher control the source IP used which makes sense when being run from a router configured with multiple IP addresses) the size C\_S43 of the messages being sent, and the content of the messages, among other options.

## C\_S43 Exam Torrent - C\_S43 Quiz Torrent & C\_S43 Quiz Prep

Focus on the Campaign, Not Social Media, Our C\_S43 valid pdf can stand the test of time and have been first-rank materials for ten years with tens of thousands of regular clients all over the world.

The SAP Certified Application Associate SAP Certified Implementation Consultant - SAP S/4HANA Cloud Private Edition, Asset Management (C\_S43\_2601) certification offers key points, Therefore, users can pass exams with very little learning time, Besides, Our C\_S43 test preparation are of great importance with inexpensive prices, there are constantly feedbacks we received from exam candidates, so our C\_S43 exam braindumps are available to everyone, you will not regret for choosing them but gain a lot after using them.

Dear friends, I know you must have C\_S43 Study Demo been longing to obtain some useful certificates for your career.

- Hot Exam C\_S43 Lab Questions Pass Certify | Reliable C\_S43 Reliable Exam Labs: SAP Certified Implementation Consultant - SAP S/4HANA Cloud Private Edition, Asset Management (C\_S43\_2601)  Immediately open  [www.prepawaypdf.com](http://www.prepawaypdf.com)  and search for 「 C\_S43 」 to obtain a free download ☀️ C\_S43 New Dumps
- Dump C\_S43 Check  C\_S43 Pass4sure Exam Prep  C\_S43 Latest Training  Download ➡️ C\_S43  for free by simply searching on ✓ [www.pdfvce.com](http://www.pdfvce.com)  ✓  C\_S43 Latest Training
- Free PDF SAP - Efficient Exam C\_S43 Lab Questions  Search for ➡️ C\_S43  and easily obtain a free download on ▶ [www.exam4labs.com](http://www.exam4labs.com) ◀  C\_S43 Valid Exam Pdf
- C\_S43 Exam Simulation: SAP Certified Implementation Consultant - SAP S/4HANA Cloud Private Edition, Asset Management (C\_S43\_2601) - C\_S43 Training Materials  Search for  C\_S43  and easily obtain a free download on  [www.pdfvce.com](http://www.pdfvce.com)   C\_S43 Certification Practice
- Perfect 100% Free C\_S43 – 100% Free Exam Lab Questions | C\_S43 Reliable Exam Labs  Download  C\_S43  for free by simply searching on 《 [www.examcollectionpass.com](http://www.examcollectionpass.com) 》  C\_S43 Valid Test Cram
- Reliable C\_S43 Braindumps Files  Training C\_S43 Material  Exam C\_S43 Braindumps  Easily obtain free download of ➡️ C\_S43  by searching on ✓ [www.pdfvce.com](http://www.pdfvce.com)  ✓  Reliable C\_S43 Braindumps Files
- Testking C\_S43 Learning Materials  Dump C\_S43 Check  C\_S43 New Dumps  Search for ▶ C\_S43 ◀ and download it for free immediately on ▶ [www.easy4engine.com](http://www.easy4engine.com) ◀  C\_S43 Valid Exam Format
- Are SAP C\_S43 Actual Questions Effective to Get Certified?  Open website “ [www.pdfvce.com](http://www.pdfvce.com) ” and search for ▶ C\_S43 ◀ for free download  C\_S43 Pass4sure Exam Prep
- C\_S43 Latest Exam Vce  C\_S43 Lead2pass  C\_S43 Real Dumps Free  Download 【 C\_S43 】 for free by simply entering ▶ [www.examcollectionpass.com](http://www.examcollectionpass.com) ◀ website  C\_S43 Latest Training
- Pass Guaranteed Quiz 2026 Professional SAP Exam C\_S43 Lab Questions ✓ Copy URL 《 [www.pdfvce.com](http://www.pdfvce.com) 》 open and search for ☀️ C\_S43 ☀️  to download for free  C\_S43 Pass4sure Exam Prep
- C\_S43 Latest Training  New C\_S43 Exam Guide  C\_S43 Valid Exam Pdf  The page for free download of ( C\_S43 ) on ➡️ [www.examcollectionpass.com](http://www.examcollectionpass.com)  will open immediately  Reliable C\_S43 Braindumps Files
- [bronteypwi801900.blognody.com](http://bronteypwi801900.blognody.com), [myportal.utt.edu.tt](http://myportal.utt.edu.tt), [myportal.utt.edu.tt](http://myportal.utt.edu.tt), [myportal.utt.edu.tt](http://myportal.utt.edu.tt), [myportal.utt.edu.tt](http://myportal.utt.edu.tt), [myportal.utt.edu.tt](http://myportal.utt.edu.tt), [myportal.utt.edu.tt](http://myportal.utt.edu.tt), [myportal.utt.edu.tt](http://myportal.utt.edu.tt), [myportal.utt.edu.tt](http://myportal.utt.edu.tt), [myportal.utt.edu.tt](http://myportal.utt.edu.tt), [myportal.utt.edu.tt](http://myportal.utt.edu.tt), [myportal.utt.edu.tt](http://myportal.utt.edu.tt), [myportal.utt.edu.tt](http://myportal.utt.edu.tt), [myportal.utt.edu.tt](http://myportal.utt.edu.tt), [myportal.utt.edu.tt](http://myportal.utt.edu.tt), [myportal.utt.edu.tt](http://myportal.utt.edu.tt), [socialnetworkadsinfo.com](http://socialnetworkadsinfo.com), [www.stes.tyc.edu.tw](http://www.stes.tyc.edu.tw), [crossbookmark.com](http://crossbookmark.com), [abelfygn555473.blogdun.com](http://abelfygn555473.blogdun.com), [cyruswwnfl41143.wikifordummies.com](http://cyruswwnfl41143.wikifordummies.com), [telegra.ph](http://telegra.ph), [socialnetworkadsinfo.com](http://socialnetworkadsinfo.com), [alysharhvb859740.vblogetin.com](http://alysharhvb859740.vblogetin.com), Disposable vapes