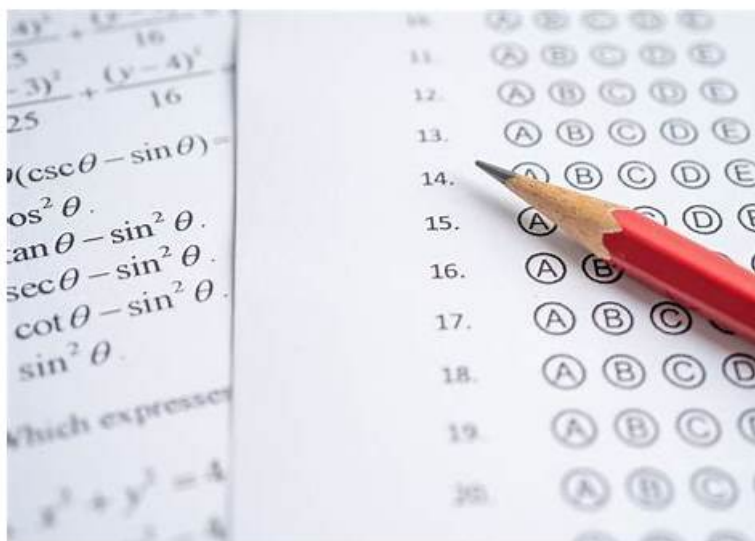


# Effective Test C-CPI-2506 Pdf | Easy To Study and Pass Exam at first attempt & Professional SAP SAP Certified Associate - Integration Developer



DOWNLOAD the newest ExamsLabs C-CPI-2506 PDF dumps from Cloud Storage for free: <https://drive.google.com/open?id=1DcAO9v-sSYPyEbdP1UiRQJGPHtPt5rly>

Most people said the process is more important than the result, but as for C-CPI-2506 exam, the result is more important than the process, because it will give you real benefits after you obtain C-CPI-2506 exam certification in your career in IT industry. If you have made your decision to pass the exam, our C-CPI-2506 exam software will be an effective guarantee for you to Pass C-CPI-2506 Exam. Maybe you are still doubtful about our product, it doesn't matter, but if you try to download our free demo of our C-CPI-2506 exam software first, you will be more confident to pass the exam which is brought by our ExamsLabs.

## SAP C-CPI-2506 Exam Syllabus Topics:

Topic	Details
Topic 1	<ul style="list-style-type: none"><li>Managing APIs: This section of the exam measures the skills of Solution Architects and focuses on managing APIs within the SAP ecosystem. It covers topics such as API provisioning, lifecycle management, security policies, and monitoring, ensuring candidates can handle APIs effectively for enterprise integration needs.</li></ul>
Topic 2	<ul style="list-style-type: none"><li>Implementing Cloud Integration: This section of the exam measures the skills of Integration Consultants and examines how cloud integration flows are designed and deployed. It emphasizes creating integration scenarios, handling connectivity, and applying best practices to build efficient, secure, and reliable integration processes in SAP's cloud environment.</li></ul>
Topic 3	<ul style="list-style-type: none"><li>SAP Integration Suite Overview: This section of the exam measures the skills of Integration Consultants and covers the foundational concepts of the SAP Integration Suite. It provides an understanding of the suite's capabilities, its role in connecting applications, and its relevance in modern cloud-based integration scenarios.</li></ul>
Topic 4	<ul style="list-style-type: none"><li>SAP Event Mesh: This section of the exam measures the skills of Solution Architects and centers on using SAP Event Mesh to support event-driven integration. It highlights the importance of asynchronous communication, event publishing, and subscription models, allowing organizations to build scalable and decoupled systems.</li></ul>

## Pass-Sure Test C-CPI-2506 Pdf - Easy and Guaranteed C-CPI-2506 Exam Success

With our study materials, you do not need to have a high IQ, you do not need to spend a lot of time to learn, you only need to follow the method C-CPI-2506 real questions provide to you, and then you can easily pass the exam. Our study material is like a tutor helping you learn, but unlike a tutor who make you spend too much money and time on learning. As usual, you just need to spend little time can have a good commend of our study materials, then you can attend to your C-CPI-2506 Exam and pass it at your first attempt.

### SAP Certified Associate - Integration Developer Sample Questions (Q40-Q45):

#### NEW QUESTION # 40

Which of the following are markup languages that you can use to describe APIs? Note: There are 2 correct answers to this question.

- A. HTML
- B. CXML
- C. OpenAPI
- D. RAML

**Answer: C,D**

Explanation:

RAML and OpenAPI are markup languages that you can use to describe APIs. RAML stands for RESTful API Modeling Language and is based on YAML. OpenAPI is a specification for describing RESTful APIs and is based on JSON or YAML. Both languages allow you to define the structure, parameters, responses, and documentation of your APIs. Reference: Integration Software | SAP Integration Suite, Modernize Integration with SAP Integration Suite | openSAP

#### NEW QUESTION # 41

How do event-driven architectures enable organizations respond quickly to changing market demands and maintain operational stability during unforeseen issues?

- A. They prioritize batch processing of data, that hinders rapid responses tmarket changes and increases system complexity.
- B. They enable real-time processing of data, enabling organizations treact swiftly tmarket shifts and maintain stability by decoupling components for flexible scaling and increased fault tolerance.
- C. They rely on tightly coupled components, that limit scalability and make them vulnerable tcascading failures during unexpected disruption.
- D. They require extensive manual intervention for data processing, that slows reactions tmarket shifts and reduces operational efficiency.

**Answer: B**

Explanation:

Event-Driven Architectures (EDA) provide real-time responsiveness and resilience by:

Real-time data processing # Immediate reaction to business events (e.g., order creation, stock changes).

Decoupling of components # Producers and consumers are independent, allowing flexible scaling.

Fault tolerance # Failures in one component do not propagate due to event buffering and loose coupling.

Incorrect options:

A # Batch processing delays responsiveness.

C # EDA minimizes manual intervention.

D # Tight coupling is opposite to EDA principles.

#### NEW QUESTION # 42

In a Content Modifier, you want to set up a call to the message body of the previous Content Modifier. Which notation do use to

implement this?

- A. S[bodyin]
- B. S(inbody)
- C. S{body.in}
- **D. S{in body}**

**Answer: D**

Explanation:

To access the message body of the previous Content Modifier step in an integration flow, you must use the notation S{in body} in the current Content Modifier step. This notation means that you want to read the value from the in-message body of the exchange container. The exchange container is used to store additional data besides the message that is being processed by SAP Integration Suite. It has two message containers: in-message and out-message. The in-message contains the original message that was received by the integration flow, while the out-message contains the modified message that will be sent by the integration flow. Reference: Content Modifier Basics | SAP Help Portal, Exchange Container | SAP Help Portal

### NEW QUESTION # 43

What are some message protocols that the API Management capability within SAP Integration Suite supports?

Note: There are 2 correct answers to this question.

- A. RFC
- **B. SOAP**
- **C. OData**
- D. IDoc

**Answer: B,C**

Explanation:

API Management in SAP Integration Suite supports HTTP-based protocols.

Supported # SOAP, OData, REST (OpenAPI).

Not supported directly # RFC and IDoc (these are legacy SAP protocols handled via Cloud Integration or On- Premise adapters, not via API Management).

Thus, the correct supported message protocols are SOAP and OData.

### NEW QUESTION # 44

Which expression language can you use to access the content of a message in an integration flow?

- **A. Simple expression language**
- B. XML expression language
- C. JavaScript expression language
- D. Spring expression language

**Answer: A**

Explanation:

In SAP Cloud Integration, the runtime message content, headers, and properties can be accessed using the Camel Simple Expression Language.

Examples:

`${body}` # Accesses the message payload.

`${header.<headerName>}` # Accesses message headers.

`${property.<propertyName>}` # Accesses integration properties.

Other options:

XML expression language # Not supported directly.

Spring expression language # Used in Spring apps, not in SAP CPI.

JavaScript expression language # Not used; JavaScript/Groovy scripts exist, but not for message expressions.

Thus, the correct language is Simple expression language.

• • • • •

**C-CPI-2506 Verified Answers:** <https://www.examslabs.com/SAP/SAP-Certified-Associate/best-C-CPI-2506-exam-dumps.html>

- BONUS!!! Download part of ExamsLabs C-CPI-2506 dumps for free: <https://drive.google.com/open?id=1DcAO9v-sSYPyEbdP1UiRQJGPHtPt5r1v>