

Exam 800-150 Lab Questions, 800-150 Training Courses

Review KEY for BIOL 150 Lab Exam 1 Montgomery College; Rockville Campus

EXERCISES 1-6: Introduction to Science, Biomolecules, Microscopy, Osmosis, Respiration, Photosynthesis.

Please note that questions in this document are a guide to prepare for Lab Exam 1. None of the questions are going to be copied and pasted on your exam by your instructor. Please print a copy and bring it with you to any of the review sessions you're planning on attending. Use it even if you cannot make to any of the sessions offered this semester.

Microscopy (3)



Answers can be found in exercise

Leica DM750 on YouTube: <https://www.youtube.com/watch?v=YFjnE6e9xY>
https://youtu.be/fo2aC_m2vsg

1

What's more, part of that PrepAwayTest 800-150 dumps now are free: <https://drive.google.com/open?id=1gchP-60-PtDxz8w7aErLZUvPuJWZE2ZV>

Our 800-150 exam questions provide with the software which has a variety of self-study and self-assessment functions to detect learning results. This function is conducive to pass the 800-150 exam and improve you pass rate. Our software is equipped with many new functions, such as timed and simulated test functions. After you set up the simulation test timer with our 800-150 Test Guide which can adjust speed and stay alert, you can devote your mind to learn the knowledge. There is no doubt that the function can help you pass the 800-150 exam.

In the case of studying with outdated Supporting Cisco Devices for Field Technicians (800-150) practice questions, you will fail and lose your resources. PrepAwayTest made an 800-150 Questions for the students so that they don't get confused to prepare for 800-150 Certification Exam successfully in a short time. PrepAwayTest has designed the real 800-150 exam dumps after consulting many professionals and receiving positive feedback.

>> Exam 800-150 Lab Questions <<

Excellent 800-150 Exam Questions provide you the most reliable Training Brain Dumps - PrepAwayTest

Applying the international recognition third party for payment for 800-150 exam cram, and if you choose us, your money and account safety can be guaranteed. And the third party will protect the interests of you. In addition, 800-150 learning materials are edited and verified by professional experts who possess the professional knowledge for the exam, and the quality can be guaranteed. We are pass guarantee and money back guarantee and if you fail to pass the exam, we will give you full refund. We provide free

update for 365 days for 800-150 Exam Materials for you, so that you can know the latest information for the exam, and the update version will be sent to your email automatically.

Cisco 800-150 Exam Syllabus Topics:

Topic	Details
Topic 1	<ul style="list-style-type: none">• Cisco Software: This section of the exam measures the skills of a Network Engineer and discusses Cisco's software systems and licensing. It explains the difference between IOS install and bundle modes and gives an overview of different licensing models. Students learn how to manage Cisco software images, including backing up, transferring, and installing images via FTP, TFTP, or USB. It also covers how to handle configuration files to keep devices running properly and ensure smooth upgrades or replacements.
Topic 2	<ul style="list-style-type: none">• Cisco UCS and Data Center Architecture: This section of the exam measures the skills of a Data Center Engineer and introduces Cisco's UCS and data center solutions. It explains the devices found in a data center, including switches, UCS servers, and director switches, and describes different server deployment models. Students will also learn about virtualization components like virtual machines, hypervisors, cloud computing concepts, and deployment models. The section covers how Cisco UCS devices fit into campus networks, edge locations, and data centers, and explains the key components and connections used in UCS architecture.
Topic 3	<ul style="list-style-type: none">• Networking Foundations: This section of the exam measures the skills of a Network Engineer and covers the basic building blocks of computer networking. It explains different types of networks like local area networks and wireless networks, and introduces lightweight wireless LANs. It describes the layers of communication models like the OSI model and TCP• IP stack, and explains how data moves across networks. It also discusses the physical cabling used in networks, such as Ethernet and fiber optics. Students will learn about network switching, IP addressing, subnetting, and routing at Layer 3. The section also introduces Cisco's campus network devices, data center switches, UCS servers, and collaboration devices, describing their roles and functions in the network.
Topic 4	<ul style="list-style-type: none">• Cisco Infrastructure and Collaboration Infrastructure: This section of the exam measures the skills of a Collaboration Engineer and focuses on Cisco infrastructure devices, endpoints, and collaboration technologies. It introduces network devices, collaboration endpoints like IP phones and video systems, and explains on-premises collaboration deployments using tools like Cisco Unified Communications Manager. It also covers how video systems integrate into collaboration environments and highlights Cisco's cloud services for enterprise communication, including Webex Meetings, Webex Teams, and hosted collaboration solutions.
Topic 5	<ul style="list-style-type: none">• Cisco Hardware Replacement: This section of the exam measures the skills of a Technical Support Engineer and teaches how to safely and correctly replace Cisco hardware. It explains safety procedures such as creating safe work zones and handling electrostatic discharge. Students learn the step-by-step processes to replace a wide range of Cisco devices, from switches and routers to firewalls, UCS servers, and collaboration endpoints. It also covers configuring Cisco NX-OS software, including understanding operating modes, boot procedures, and password recovery, and introduces Cisco collaboration endpoint solutions like IP phones and video systems.

Cisco Supporting Cisco Devices for Field Technicians Sample Questions (Q100-Q105):

NEW QUESTION # 100

Which command is used to specify the source for the Cisco IOS software image to load during the boot process?

- A. boot ios
- B. boot system
- C. boot source
- D. boot image

Answer: B

Explanation:

The `boot system` command is used in global configuration mode to specify the source and filename of the Cisco IOS software image that should be loaded during the device's boot process. This command ensures that the device loads a specific IOS image, whether it's stored locally in flash or fetched from a TFTP server.

Syntax example:

`boot system flash:c1900-universalk9-mz.SPA.157-3.M3.bin`

* `boot image`, `boot ios`, and `boot source` are invalid or non-existent in standard Cisco IOS.

Reference: Supporting Cisco Devices for Field Technicians (FLDTEC) - Cisco IOS Software Basics

NEW QUESTION # 101



Refer to the exhibit. Which component is highlighted on the Cisco I/O module image?

- A. fan module LED
- B. captive screw
- C. fixed port
- D. chassis connections LED

Answer: D

Explanation:

The highlighted component on the Cisco I/O module is the chassis connections LED, which indicates the status of connectivity between the I/O module and the chassis.

In the exhibit, the orange arrow points to a small rectangular LED indicator located to the left side of the I/O module (Cisco UCS-IOM-2304). This specific LED is not aligned with the ports, fans, or screws, which helps identify it correctly.

Chassis connections LED (B) is responsible for indicating the status of uplink/downlink communication between the I/O module and the chassis.

* Green usually indicates a healthy link.

* Amber or off may indicate a problem or no connection.

Why the other answers are incorrect:

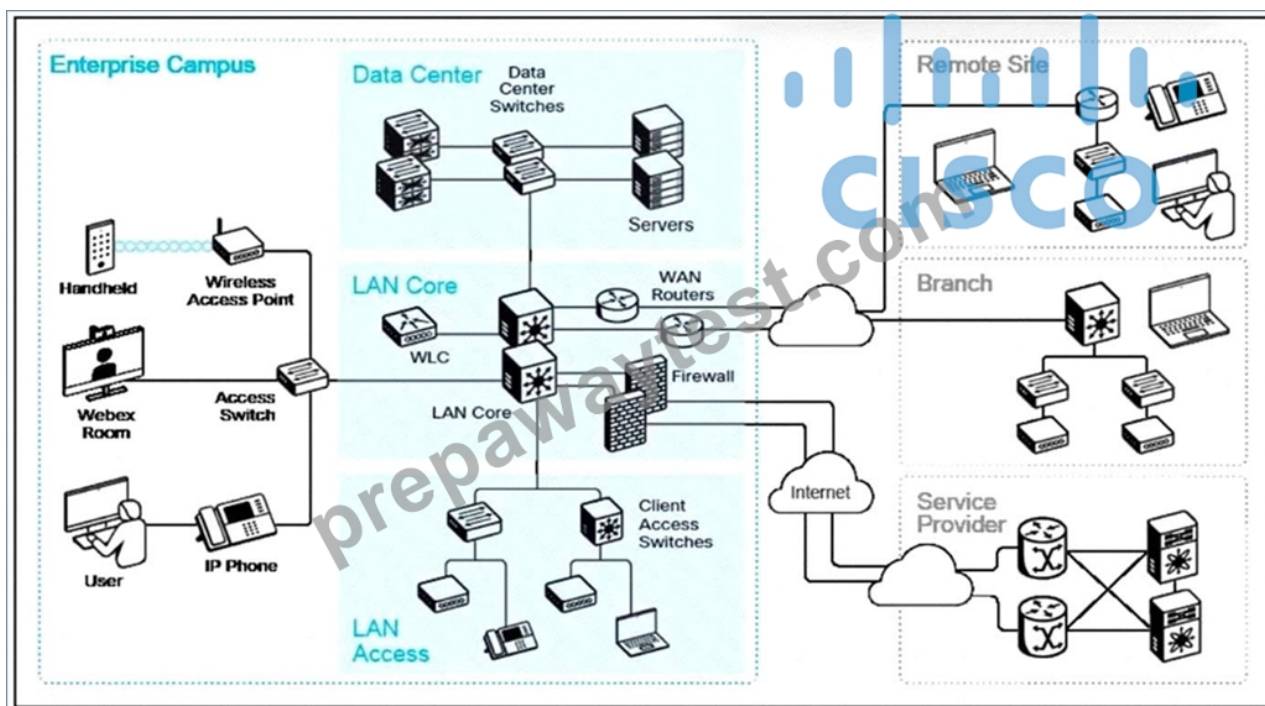
* A. Captive screw# These are at the far corners, not where the arrow points.

* C. Fan module LED# This IOM doesn't have user-visible fan LEDs at the front face.

* D. Fixed port# These are the large rectangular SFP ports clearly visible in the middle, not near the arrow.

This identification is important when troubleshooting chassis-to-IOM connectivity or verifying module status LEDs during field maintenance.

NEW QUESTION # 102



Refer to the exhibit. What are two ways remote sites or branches connect to the enterprise campus network? (Choose two.)

- A. IPsec VPN tunnels
- B. Ad hoc Wi-Fi network
- C. Access layer switches
- D. WAN links
- E. LAN core switches

Answer: A,D

Explanation:

In enterprise networking, remote sites or branch offices connect to the central campus network using:

* WAN Links: These are dedicated communication paths that connect geographically dispersed networks. WAN links can be leased lines, MPLS circuits, or other forms of long-distance connectivity that facilitate reliable data transmission between remote sites and the main campus.

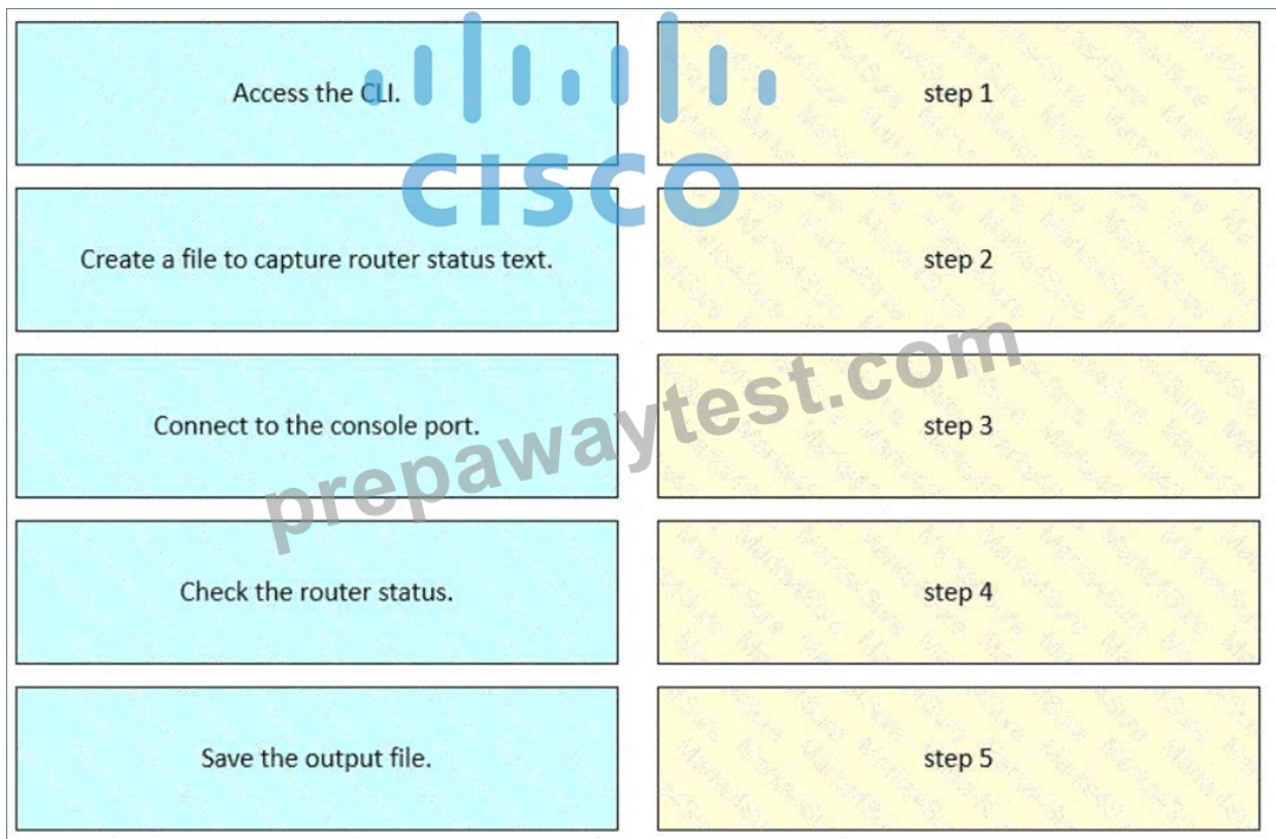
* IPsec VPN Tunnels: Internet Protocol Security (IPsec) VPNs provide secure, encrypted tunnels over the public internet, allowing remote sites to connect to the enterprise network securely. This method is cost-effective and widely used for connecting branch offices to the central network infrastructure.

Access layer switches (Option A) and LAN core switches (Option E) are components within a local network and do not facilitate remote connectivity. Ad hoc Wi-Fi networks (Option D) are temporary and lack the security and reliability required for enterprise-level remote connections.

Reference: Supporting Cisco Devices for Field Technicians (FLDTEC) - Cisco Equipment and Related Hardware

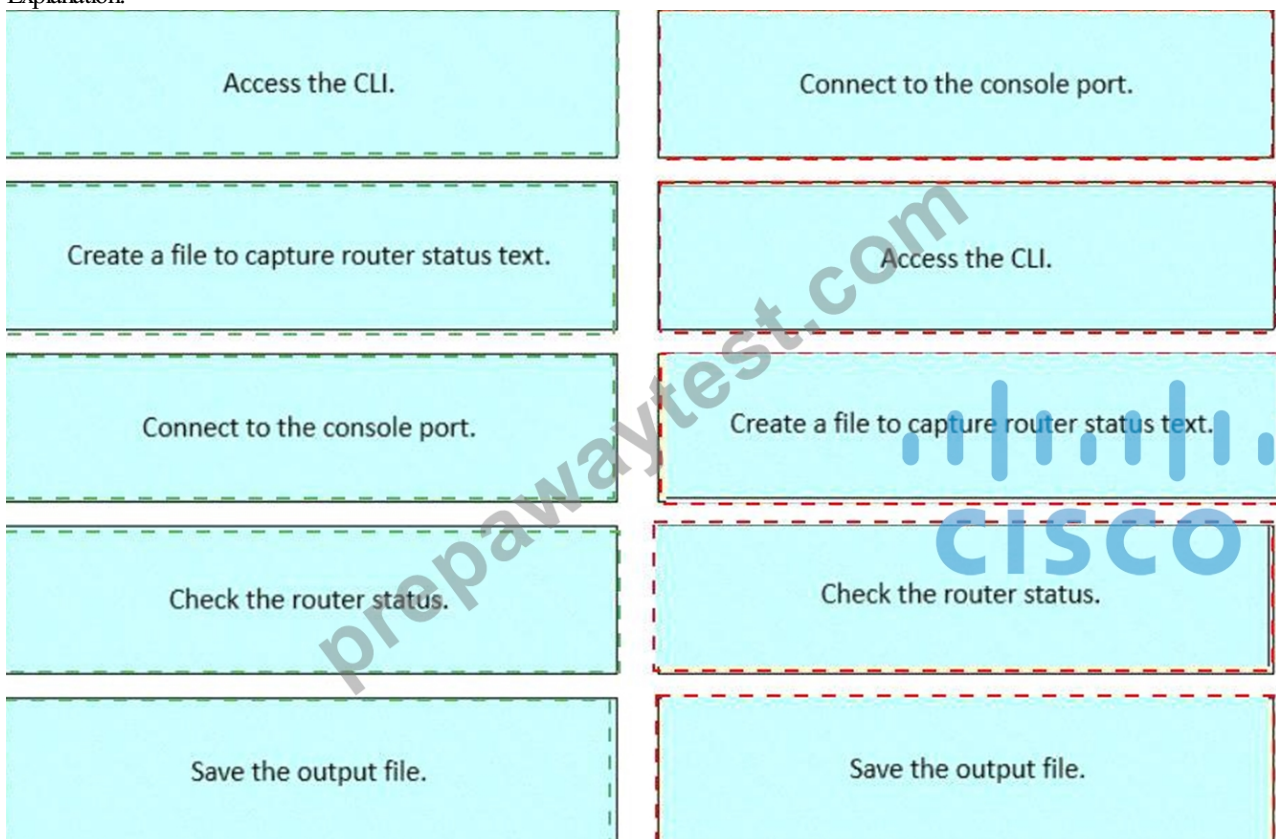
NEW QUESTION # 103

Drag and drop the steps from the left into order to capture the status of a Cisco device.



Answer:

Explanation:



Explanation:

This procedure is taught in the FLDTEC course under the Device Configuration and Verification section and reflects standard field technician workflows:

- * Connect to the console port using a console cable and terminal software (like PuTTY or Tera Term).
- * Access the CLI of the Cisco device by logging in via the console session.

- * Create a log file or enable logging in the terminal emulator to begin capturing output.
 - * Check the router status using commands such as show running-config, show ip interface brief, or show version.
 - * Save the output file from the terminal emulator for documentation, troubleshooting, or escalation.
- This logical flow ensures accurate diagnostics and traceability during field support operations.

NEW QUESTION # 104

Which action must be taken when editing a captured configuration of an old device for reuse in a replacement device?

- A. Add the enable password cisco command.
- B. Keep all access-list commands intact.
- C. Remove all configurations under line vty 0 4.
- D. Retain all username entries.

Answer: D

Explanation:

Within the FLDTE training, especially under Maintenance and RMA Procedures, there is a strong emphasis on safely transferring and adapting configurations from failed or decommissioned devices to replacement units.

The official guidance includes the following:

"When reusing a configuration from an old device, make sure to retain the necessary security elements such as username entries. This ensures the replacement device is still accessible under the correct user credentials." Here's a breakdown of why the correct answer is B:

* A. Remove all configurations under line vty 0 4: This would eliminate remote access settings, making it harder to manage the device.

* B. Retain all username entries: Correct. Keeping the username entries ensures continued secure access and avoids loss of administrative control.

* C. Keep all access-list commands intact: Not always required - ACLs are often tailored to interface-specific settings or environments which may differ between devices.

* D. Add the enable password cisco command: Not a best practice. Default passwords (like cisco) should be avoided for security reasons, and it's not required if enable secret is already in use.

NEW QUESTION # 105

.....

Several advantages we now offer for your reference. On the one hand, our 800-150 learning questions engage our working staff in understanding customers' diverse and evolving expectations and incorporate that understanding into our strategies, thus you can 100% trust our 800-150 Exam Engine. On the other hand, the professional 800-150 study materials determine the high pass rate. According to the research statistics, we can confidently tell that 99% candidates have passed the 800-150 exam.

800-150 Training Courses: <https://www.prepawaytest.com/Cisco/800-150-practice-exam-dumps.html>

- 800-150 latest valid questions - 800-150 vce pdf dumps - 800-150 study prep material ☐ Copy URL ☐ www.torrentvce.com ☐ open and search for ➡ 800-150 ☐ to download for free ☐ 800-150 Valid Test Question
- 2025 The Best Exam 800-150 Lab Questions | 100% Free Supporting Cisco Devices for Field Technicians Training Courses ☐ Search for ➡ 800-150 ☐ and download it for free immediately on ➤ www.pdfvce.com ◁ ☐ 800-150 Practice Test Online
- Latest 800-150 Test Preparation ☐ Examcollection 800-150 Vce ☒ 800-150 Reliable Test Tutorial ☐ The page for free download of ➡ 800-150 ☐ on ➤ www.prep4away.com ◁ will open immediately ☐ Customized 800-150 Lab Simulation
- Professional Exam 800-150 Lab Questions Help You to Get Acquainted with Real 800-150 Exam Simulation ☐ Open ☐ www.pdfvce.com ☐ enter ➡ 800-150 ☐ and obtain a free download ☐ 800-150 Test Assessment
- Cisco Exam 800-150 Lab Questions: Supporting Cisco Devices for Field Technicians - www.examcollectionpass.com Ensure you a High Passing Rate ☐ Search for ☐ 800-150 ☐ and download it for free on 《 www.examcollectionpass.com 》 website ☐ Flexible 800-150 Testing Engine
- Professional Exam 800-150 Lab Questions Help You to Get Acquainted with Real 800-150 Exam Simulation ☐ Easily obtain { 800-150 } for free download through ➡ www.pdfvce.com ☐ ☐ 800-150 Reliable Test Pdf
- Take Your Cisco 800-150 Exam with Preparation Material Available in Three Formats ☐ Download ➤ 800-150 ◀ for free by simply searching on ➡ www.examcollectionpass.com ☐ ☐ Flexible 800-150 Testing Engine
- 800-150 Test Assessment ☐ 800-150 Practice Test Online ☐ 800-150 Reliable Exam Camp ☐ Search for ☐ 800-150 ☐ and download it for free immediately on ⇒ www.pdfvce.com ⇐ ☐ 800-150 Test Preparation

- Customized 800-150 Lab Simulation □ 800-150 Valid Test Question □ Training 800-150 Tools □ Immediately open □ www.prep4pass.com □ and search for ▷ 800-150 ◁ to obtain a free download □ 800-150 Reliable Test Braindumps
- Latest Released Cisco Exam 800-150 Lab Questions: Supporting Cisco Devices for Field Technicians □ Easily obtain 《 800-150 》 for free download through ► www.pdfvce.com □ □ 800-150 Valid Exam Camp Pdf
- 100% Pass Quiz 2025 The Best Cisco Exam 800-150 Lab Questions □ Go to website (www.prep4pass.com) open and search for ► 800-150 □ to download for free □ Customized 800-150 Lab Simulation
- comfortdesign.in, muketm.cn, motionentrance.edu.np, ncon.edu.sa, soulcreative.online, shinchon.xyz, qiyue.net, www.stes.tyc.edu.tw, www.stes.tyc.edu.tw, myportal.utt.edu.tt, myportal.utt.edu.tt, myportal.utt.edu.tt, myportal.utt.edu.tt, myportal.utt.edu.tt, myportal.utt.edu.tt, myportal.utt.edu.tt, myportal.utt.edu.tt, Disposable vapes

2025 Latest PrepAwayTest 800-150 PDF Dumps and 800-150 Exam Engine Free Share: <https://drive.google.com/open?id=1gchP-60-PtDxz8w7aErLZUvPuJWZE2ZV>