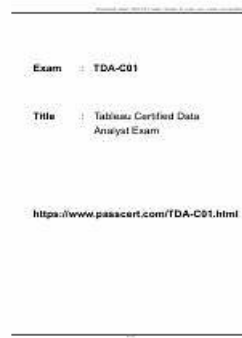


Exam TDA-C01 Training & Free TDA-C01 Test Questions



What's more, part of that TestKingFree TDA-C01 dumps now are free: <https://drive.google.com/open?id=1WriDfa794id-6u3LdzE7kX4m6VcILWd9>

TDA-C01 exam training allows you to pass exams in the shortest possible time. If you do not have enough time, our TDA-C01 study material is really a good choice. In the process of your learning, our TDA-C01 study materials can also improve your efficiency. If you don't have enough time to learn, TDA-C01 Test Guide will make the best use of your spare time. The professional tailored by TDA-C01 learning question must be very suitable for you. You will have a deeper understanding of the process. Efficient use of all the time, believe me, you will realize your dreams.

TDA-C01 test questions have a mock examination system with a timing function, which provides you with the same examination environment as the real exam. Although some of the hard copy materials contain mock examination papers, they do not have the automatic timekeeping system. Therefore, it is difficult for them to bring the students into a real test state. With TDA-C01 Exam Guide, you can perform the same computer operations as the real exam, completely taking you into the state of the actual exam, which will help you to predict the problems that may occur during the exam, and let you familiarize yourself with the exam operation in advance and avoid rushing during exams.

>> Exam TDA-C01 Training <<

Free PDF Tableau - TDA-C01 - Efficient Exam Tableau Certified Data Analyst Training

Many candidates failed exam before. They have no confidence for next exam and they also hesitate if they have to purchase valid TDA-C01 brain dumps materials or if dumps are actually valid. Now I advise you download our free demo before you are determined to buy. Our free demo is a little of the real test, you can see several questions answers and explanations. You will know the validity of Tableau TDA-C01 Brain Dumps materials.

Tableau TDA-C01 (Tableau Certified Data Analyst) Exam is a certification exam designed for professionals who work with data and want to demonstrate their skills in using Tableau for data analysis. Tableau is a widely used data visualization and business intelligence tool that allows users to connect, visualize, and share data in a more effective and efficient way. The TDA-C01 exam tests a candidate's knowledge and skills in using Tableau for data analysis, including data preparation, visualization, dashboards, and storytelling.

Tableau TDA-C01 (Tableau Certified Data Analyst) certification exam is a globally recognized certification that validates an individual's skills and expertise in using Tableau for data analysis. Tableau Certified Data Analyst certification exam is designed for professionals who want to demonstrate their proficiency in Tableau and showcase their ability to work with data to solve complex business problems.

Tableau TDA-C01 (Tableau Certified Data Analyst) certification exam is an industry-recognized certification that demonstrates proficiency in using Tableau for data analysis and visualization. TDA-C01 exam is designed to test the skills and knowledge required to effectively use Tableau to connect to data, create visualizations, and analyze data. Passing the exam validates that the candidate is well-versed in Tableau and can use the tool to solve real-world data problems.

Tableau Certified Data Analyst Sample Questions (Q95-Q100):

NEW QUESTION # 95

You have a data source that contains the following columns.

Name	Data type
Order Date	Date
Region	String
Sales	Number (decimal)

You want to filter regions based on the highest sales. Users must be able to specify the number of regions shown.

Which three actions should you perform in order? (Place the three correct options in order. Use the arrows to move Options to Answer Area.

Use Answer Area arrows to re-order the options.)

Drag **Sales** to the Filters shelf.

Drag **Order Date** to the Filters shelf.

Configure a Top filter by field. Use Param1 and filter by the sum of Sales.

Select **Range of Values**, and then click **OK**.

Create an integer data type parameter named Param1.

Drag **Region** to the Filters shelf.

Configure a Top filter by formula by using Param1.

>

<

↑

↓

Answer:

Explanation:

Answer Area

Create an integer data type parameter named Param1

Drag Region to the Filters shelf.

Configure a Top filter by field. Use Param1 and filter by the sum of Sales.

- 1 - Create an integer data type parameter named Param1
- 2 - Drag Region to the Filters shelf.
- 3 - Configure a Top filter by field. Use Param1 and filter by the sum of Sales.

Reference:

Tableau Certified Data Analyst Exam Prep Guide, page 10, section "Filtering Data" Tableau Help: Parameters Tableau Help: Top

NEW QUESTION # 96

You have the following dataset.

When you use the dataset in a worksheet, you want Sales to appear automatically as shown in the following table. What should you do?

- A. Create a calculated field that uses a formula of 'S' * str (Round((sales],2)) + 'k'
- B. Change the data type of the Sales field to String
- C. Create a calculated field that uses a formula of 'S' + str < (Sales)/1000)).
- D. Change the default number format of the Sales field

Answer: D

Explanation:

To make Sales appear automatically as shown in the second table, you should change the default number format of the Sales field. The default number format is how Tableau displays a field when you drag it to a worksheet. You can change the default number format by right-clicking on the field and selecting Default Properties > Number Format from the menu. This will open a dialog box where you can choose a category, such as Currency or Percentage, and customize the options, such as decimal places or prefixes. In this case, you want to change the default number format of Sales to Currency with zero decimal places and a custom prefix of "S". This will make Sales appear as "S" followed by the rounded value in thousands.

The other options are not correct for this scenario. Changing the data type of Sales to String will not affect how it appears on a worksheet. Creating a calculated field that uses a formula will not change the default number format of Sales, but create a new field that you have to drag to a worksheet. Converting Sales to Attribute will return only one value for each partition of data, which will not show any variation over time.

References: <https://help.tableau.com/current/pro/desktop/en-us/formatting.htm> https://help.tableau.com/current/pro/desktop/en-us/formatting_change_default.htm

To achieve the formatting as shown in the example, where sales figures are displayed with a "K" to represent thousands and rounded to the nearest thousand (e.g., \$20K, \$44K, etc.), you would need to adjust the default number format of the Sales field in Tableau. By changing the default number format, every instance where the Sales field is used would automatically reflect this new formatting. This is more efficient than creating a calculated field as it preserves the numeric nature of the field, allowing for further numerical operations and aggregations.

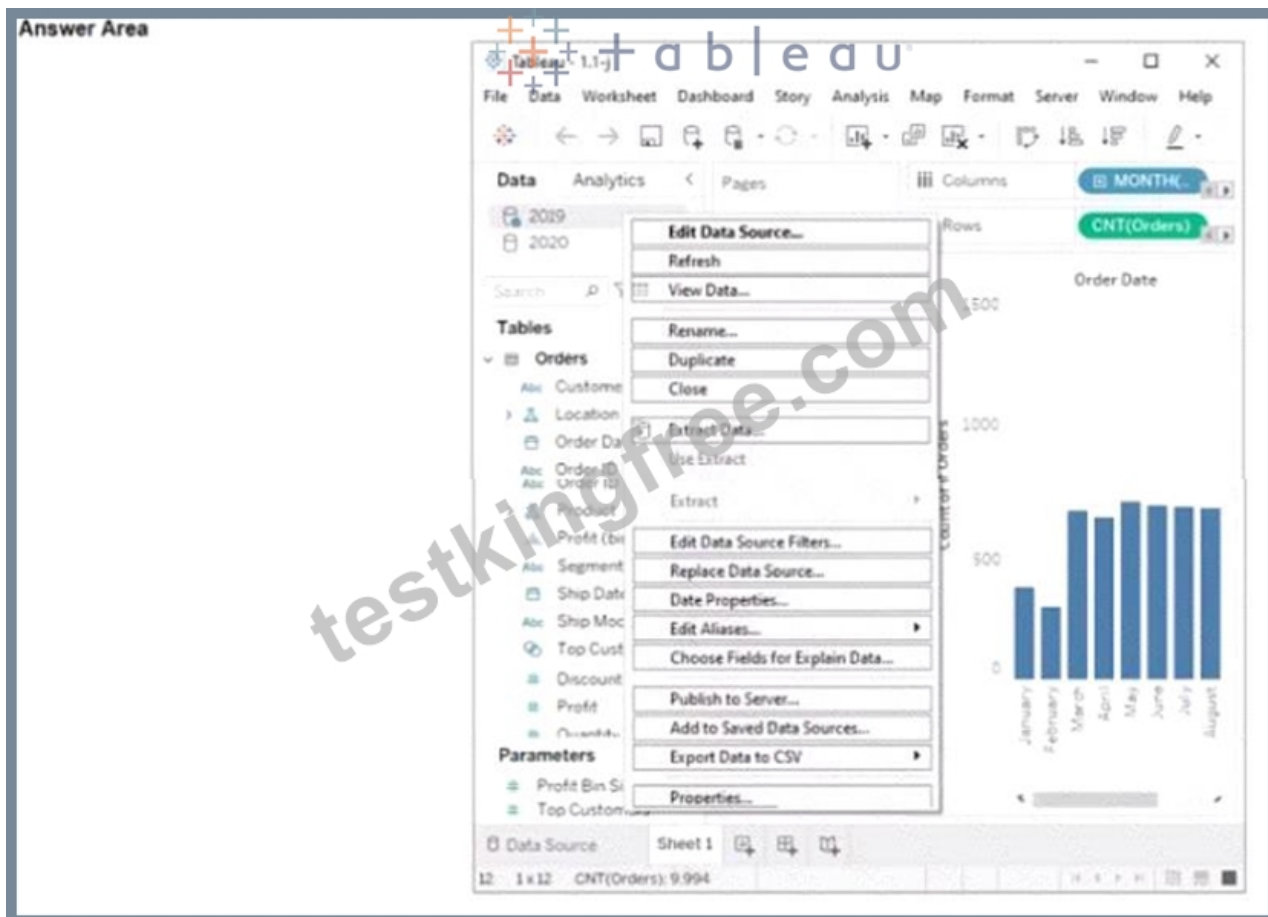
NEW QUESTION # 97

You have two data sources that use the same schema. One data source contains order data from 2019 and the other data source contains order data from 2020.

You have a worksheet that shows the orders from 2019.

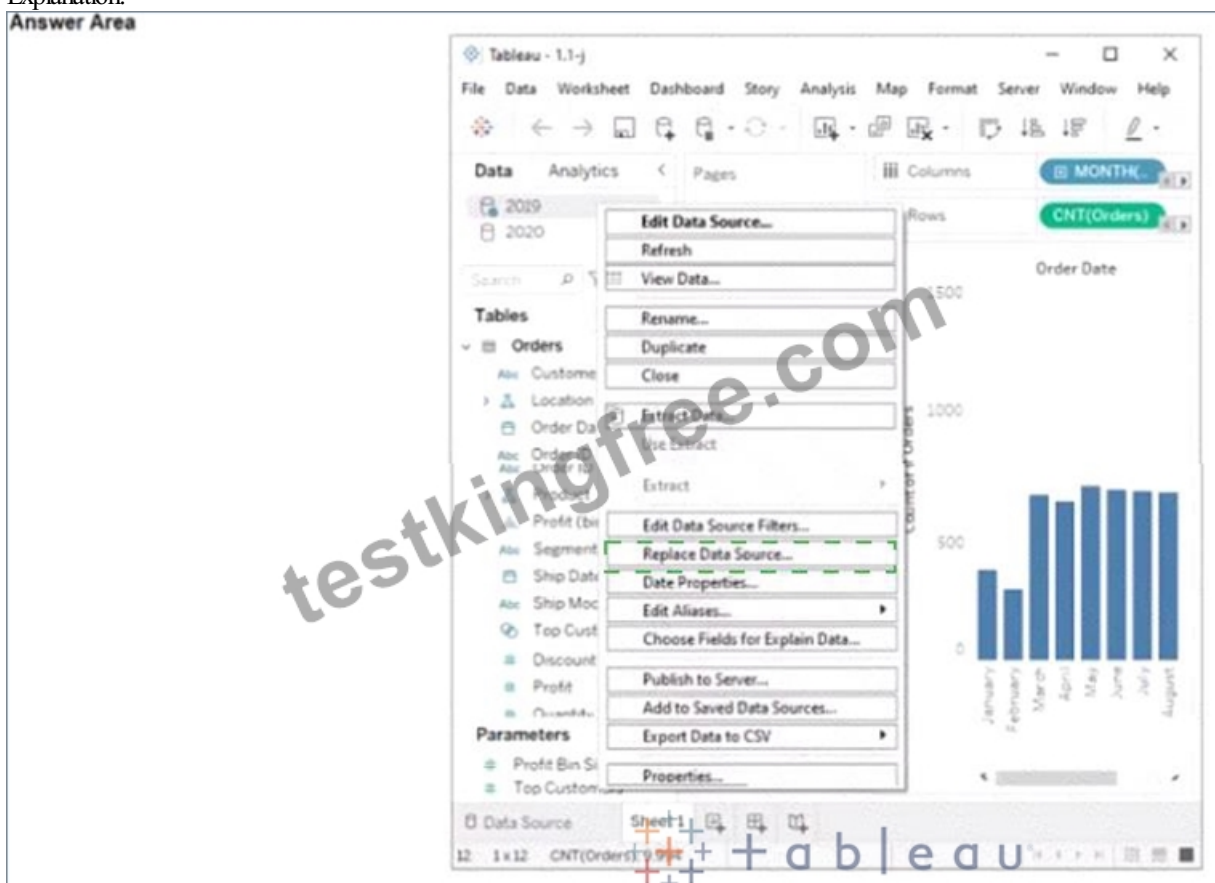
You need to configure the worksheet to show the orders from 2020 without reloading the data.

Which option should you select?



Answer:

Explanation:



Explanation:

Replace Data Source

Replace Data Source is a feature that allows you to replace one data source with another one that has the same or similar fields and structure. It updates all the worksheets that use the original data source with the new one, without reloading the data. In this case, you want to replace the data source that contains order data from 2019 with the one that contains order data from 2020.

To replace the data source, you need to do the following steps:

Go to the Data Source tab at the bottom of the workbook to see the data source page. You will see a table that shows the fields and values from the original data source.

Click on the drop-down arrow next to the data source name at the top of the page and select Replace Data Source from the menu.

This will open a dialog box that allows you to replace your data source with another one.

Select the data source that contains order data from 2020 from the list of available data sources and click OK. This will replace your original data source with the new one and update your worksheet accordingly. You may need to fix any broken fields or calculations that result from the replacement.

References: https://help.tableau.com/current/pro/desktop/en-us/datasource_replace.htm

https://help.tableau.com/current/pro/desktop/en-us/datasource_replace_workbook.htm

NEW QUESTION # 98

You have a workbook that connects to a database. The database requires authentication.

You plan to publish the workbook and schedule a daily refresh of the data.

Which two conditions must be met to schedule the refresh? Choose two.

- A. The data must be extracted.
- B. The data source must be stored as a hyper file.
- C. The credentials must be embedded.
- D. The data source must use a live connection.

Answer: A,C

Explanation:

To schedule a refresh of the data, you need to ensure that Tableau Server or Tableau Online can access the database without prompting for credentials. This can be done by embedding the credentials in the workbook or the published data source. You also need to extract the data from the database and publish it as a separate data source or as part of the workbook. A live connection would not allow you to refresh the data on a schedule, as it would always query the database directly. A hyper file is a format for storing extracted data, but it is not a requirement for scheduling a refresh. References:

Tableau Certified Data Analyst Exam Prep Guide, page 10, section "Publishing and Scheduling Data Refreshes" Tableau Help: Embedding Database Credentials Tableau Help: Extract Your Data

NEW QUESTION # 99

You have a database that includes field named sales, City and Region.

You have the following chart that shows the number of sales made in different cities.



You want to dynamically show the corresponding region when users hover their mouse over any of the bars.

What should you do?

- A. Drag Region to Tooltip on the Marks card
- B. Right-click a in the chat, select Annotate and then select Mark.
- C. Right-click a bar in the chart select Mark Label and then select Always show.
- D. Edit the aliases for City.

Answer: A

To show the

https://help.tableau.com/current/pro/desktop/en-us/buildmanual_shelves.htm

• • • • •