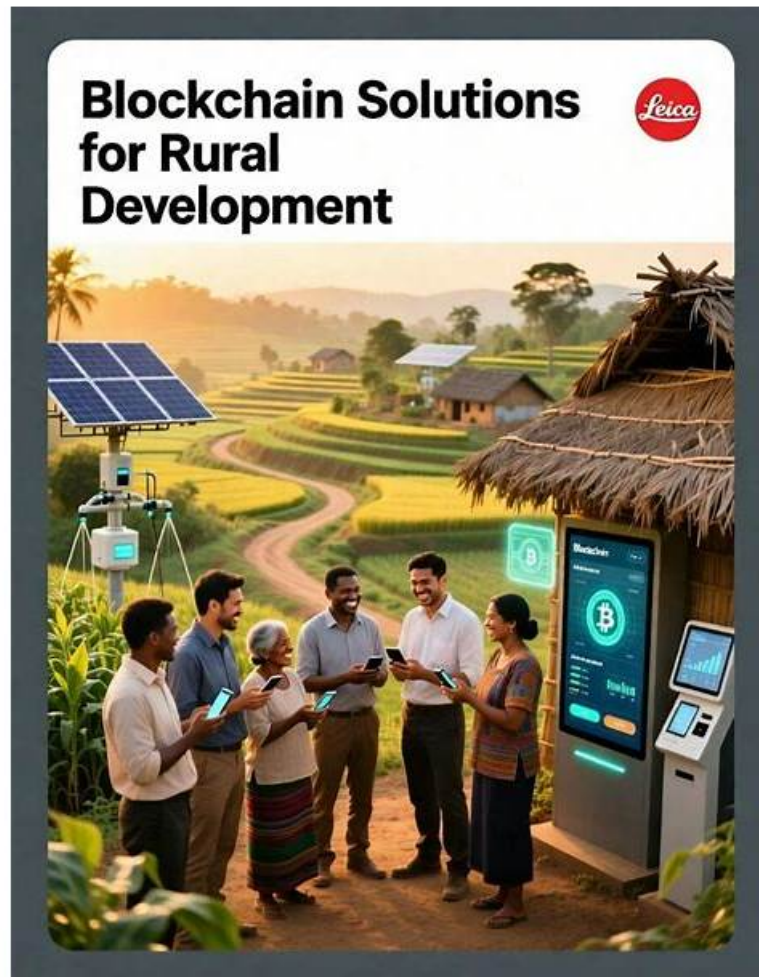


Talend-Core-Developer Real Question | PDF Talend-Core-Developer Download



P.S. Free 2026 Talend Talend-Core-Developer dumps are available on Google Drive shared by ExamDiscuss:
<https://drive.google.com/open?id=1rXVOZFntzkG-aVKjPRJtCvTYwhrdSPOk>

The web-based Talend Core Certified Developer Exam (Talend-Core-Developer) practice exam is accessible from any major OS. These Talend Talend-Core-Developer exam questions are browser-based, so there's no need to install anything on your computer. Chrome, IE, Firefox, and Opera all support this Talend Core Certified Developer Exam (Talend-Core-Developer) web-based practice exam. You can take this Talend Core Certified Developer Exam (Talend-Core-Developer) practice exam without plugins and software installation.

Our Talend-Core-Developer exam dumps are required because people want to get succeed in IT field by clearing the certification exam. Passing Talend-Core-Developer practice exam is not so easy and need to spend much time to prepare the training materials, that's the reason that so many people need professional advice for Talend-Core-Developer Exam Prep. The Talend-Core-Developer dumps pdf are the best guide for them passing test.

>> Talend-Core-Developer Real Question <<

PDF Talend-Core-Developer Download - Testking Talend-Core-Developer Exam Questions

Immediately after you have made a purchase for our Talend-Core-Developer practice dumps, you can download our exam study materials to make preparations for the exams. It is universally acknowledged that time is a key factor in terms of the success of exams. The more time you spend in the preparation for Talend-Core-Developer Training Materials, the higher possibility you will

pass the exam. As you can see, we have invested big amount of money to give the most convenience for you to get our Talend-Core-Developer exam braindumps.

Talend Core Certified Developer Exam Sample Questions (Q26-Q31):

NEW QUESTION # 26

What is the generic Input component used for in a Joblet design?

- A. Carrying data into a Joblet
- B. Triggering a subJob
- C. Triggering a Joblet
- D. Carrying data into a subJob

Answer: A

Explanation:

The generic Input component used for in a Joblet design is the tJobletInput component. This component is used to carry data into a Joblet from another component in the job that contains the Joblet. A Joblet is a reusable piece of a job that can be used in multiple jobs as a single component. A Joblet can have one or more input and output flows that connect it with other components in a job. To create these flows, you need to use generic input and output components, such as tJobletInput, tJobletOutput, tJobletTriggerInput, and tJobletTriggerOutput. These components allow you to define schemas and triggers for your Joblet without depending on specific components.

The tJobletInput component is not used for triggering a Joblet, triggering a subjob, or carrying data into a subjob. These are different concepts and functionalities in Talend Studio. A trigger is a link that activates a subjob or a component based on a condition or an event. A subjob is a part of a job that consists of one or more components connected by data flows or triggers. A subjob can be triggered by another subjob using triggers such as OnSubjobOk, OnSubjobError, Run if, etc. A subjob can also carry data into another subjob using data flows such as main, lookup, reject, etc. References: Talend Open Studio: Open-source ETL and Free Data Integration | Talend, [tJobletInput properties - 7.3], [Joblets - 7.3], [Triggers - 7.3]

NEW QUESTION # 27

You need to create a centralized metadata connection to a database server for an application. Which steps should you take before building a Job that reads from that database? Choose 3 answers.

- A. Retrieve the schemas from the database connection.
- B. Add a tCreateTable component to create a table in the database.
- C. Add a tMap component to handle and convert Db Types.
- D. Drag the Db Connections metadata onto the Designer to read from the database component.
- E. Create Db Connections metadata to describe the database connection.

Answer: A,D,E

Explanation:

Comprehensive and Detailed Explanation:

To establish a centralized metadata connection to a database server in Talend Studio, follow these steps before constructing a Job that reads from the database:

- * Create Db Connections Metadata to Describe the Database Connection (Option C):
- * In the Repository panel, right-click on "Metadata" and select "Create connection."
- * Fill in the necessary details such as database type, host, port, database name, username, and password.
- * Test the connection to ensure it is configured correctly.
- * Save the connection metadata for reuse across multiple Jobs.
- * Retrieve the Schemas from the Database Connection (Option E):
- * After creating the database connection metadata, expand it to view the available schemas.
- * Retrieve the required schemas by importing the table structures.
- * This step ensures that the schema definitions are centralized and can be reused in different Jobs.
- * Drag the Db Connections Metadata onto the Designer to Read from the Database Component (Option D):
- * In the Repository, locate the previously created database connection metadata.
- * Drag and drop the desired table or schema onto the Designer workspace.
- * Talend Studio will automatically create the appropriate input component (e.g., tDBInput) configured with the connection and schema details.

By following these steps, you ensure a centralized and consistent approach to managing database connections and schemas,

promoting reusability and reducing configuration errors.

NEW QUESTION # 28

Which actions can you perform in the configuration panel in Pipeline Designer? Choose 2 answers.

- A. Preview changes made by processors.
- **B. Display and update dataset connections.**
- C. Select the settings for a pipeline export.
- **D. Modify processor values.**

Answer: B,D

Explanation:

Comprehensive and Detailed Explanation:

In Talend Pipeline Designer, the configuration panel provides options for managing and modifying the settings of components within a pipeline.

* Modify processor values (Option A):

* Users can adjust values for processors such as filters, joins, transformations, and aggregations within the configuration panel.

* This helps fine-tune data processing rules directly in the pipeline.

* Display and update dataset connections (Option B):

* The configuration panel allows users to change dataset connections, updating the source or target locations of data.

* Users can modify database credentials, file paths, or API endpoints as needed.

Why not other options?

* Option C: The ability to preview changes made by processors is handled in the preview panel, not the configuration panel.

* Option D: Pipeline export settings are managed separately in the export settings menu, not in the configuration panel.

NEW QUESTION # 29

Which operations can you perform using a tMap component? Choose 3 answers.

- A. Load single lookup tables only.
- B. Reject data using inner join rejections.
- **C. Map data using filters, constraints, and simple explicit joins.**
- **D. Transform data from single or multiple sources to single or multiple destinations.**
- **E. Perform full outer joins.**

Answer: C,D,E

Explanation:

Comprehensive and Detailed Explanation:

The tMap component in Talend allows for various data transformation and mapping operations. The correct operations include:

* A. Map data using filters, constraints, and simple explicit joins.

* tMap allows mapping fields between sources and destinations with filters and constraints.

* B. Perform full outer joins.

* Unlike tJoin, tMap supports full outer joins, allowing all records from both tables to be included.

* C. Transform data from single or multiple sources to single or multiple destinations.

* You can map multiple input sources to multiple output targets with transformations.

NEW QUESTION # 30

Which characteristics distinguish Traces Debug from Java Debug?

Choose 2 answers

- A. Require Java development experiences
- **B. Supports breakpoints based on input data condition**
- **C. Allow row-by-row inspection of data flows**
- D. Requires a separate perspective

Answer: B,C

Explanation:

Trace Debug and Java Debug are two modes that allow you to debug your jobs in Talend Studio. Trace Debug mode allows you to trace each row processed by your job components and see the values of each column in each row. Java Debug mode allows you to debug your job code in Java or Perl and see the values of each variable or expression in your code.

The characteristics that distinguish Trace Debug from Java Debug are:

- * Trace Debug mode allows row-by-row inspection of data flows, while Java Debug mode does not. Data flows are the links that show the data transfer between components in your job design workspace. In Trace Debug mode, you can see the data flow on each trace and inspect the values of each column for each row processed by your job. You can also use filters to display only the rows that match a condition or an expression. In Java Debug mode, you cannot see the data flow on each trace or inspect the values of each column for each row.

- * Trace Debug mode supports breakpoints based on input data condition, while Java Debug mode does not. Breakpoints are points where the execution of your job pauses and waits for your action. You can use breakpoints to inspect your data or debug your logic at specific points of your job execution. In Trace Debug mode, you can set breakpoints on traces based on a condition or an expression that involves input data columns. For example, you can set a breakpoint to pause your job when a customer name contains a certain string or when a product price exceeds a certain value. In Java Debug mode, you can only set breakpoints on lines of code based on a condition or an expression that involves variables or expressions.

The characteristics that do not distinguish Trace Debug from Java Debug are:

- * Both modes require a separate perspective. A perspective is a set of views and editors that are arranged in a specific way to support a specific task. In Talend Studio, you can switch between different perspectives, such as Integration, Debug, Profiling, etc. To use Trace Debug mode, you need to switch to the Debug perspective by clicking on the Open Perspective button and selecting Debug. To use Java Debug mode, you need to switch to the Java perspective by clicking on the Open Perspective button and selecting Java.

- * Neither mode requires Java development experience. Although Java Debug mode allows you to debug your job code in Java or Perl, you do not need to have Java development experience to use it. You can use the graphical interface of Talend Studio to design your job components and properties without writing any code. You can also use the Code view to see the generated code of your job in Java or Perl and modify it if needed. However, you do not need to write any code from scratch or understand all the details of the code to use Java Debug mode. References: Talend Open Studio: Open-source ETL and Free Data Integration | Talend, [Trace Debug mode - 7.3], [Java Debug mode - 7.3]

NEW QUESTION # 31

.....

In addition to the PDF questions ExamDiscuss offers desktop Talend-Core-Developer practice exam software and web-based Talend Core Certified Developer Exam (Talend-Core-Developer) practice exam, to help you cope with Talend Core Certified Developer Exam (Talend-Core-Developer) exam anxiety. These Talend Talend-Core-Developer Practice Exams simulate the actual Talend Talend-Core-Developer exam conditions and provide you with an accurate assessment of your readiness for the Talend-Core-Developer exam.

PDF Talend-Core-Developer Download: <https://www.examdiscuss.com/Talend/exam/Talend-Core-Developer/>

Talend Talend-Core-Developer Real Question Fast learning with high-quality products, Or you can free download the demos of our Talend-Core-Developer learning guide on our website, just click on the buttons, you can reach whatever you want to know, You become eligible for high-paying jobs and promotions in your current firm after earning the Talend-Core-Developer Talend Core Certified Developer Exam certification, As long as you need help, we will offer instant support to deal with any of your problems about our Talend-Core-Developer exam questions If you search test practice questions you can find us which is the leading position in this field or you may know us from other candidates about our high-quality Talend-Core-Developer training materials as every year thousands of candidates choose us and gain success for their exams.

Improving thread performance by understanding Testking Talend-Core-Developer Exam Questions Ruby's synchronization methods and avoiding its pitfalls, I then had to go back and photograph one last time to capture details Talend-Core-Developer such as her floorboards, how the wall met the floor, and the side of the desk.

Updated Talend Real Question – High Pass Rate PDF Talend-Core-Developer Download

Fast learning with high-quality products, Or you can free download the demos of our Talend-Core-Developer learning guide on our website, just click on the buttons, you can reach whatever you want to know.

You become eligible for high-paying jobs and promotions in your current firm after earning the Talend-Core-Developer Talend Core Certified Developer Exam certification, As long as you need help, we will offer instant support to deal with any of your problems

Prepare for the Talend Talend-Core-Developer exam with ease using ExamDiscuss Talend Talend-Core-Developer exam questions in a convenient PDF format.

- P.S. Free & New Talend-Core-Developer dumps are available on Google Drive shared by ExamDiscuss:
<https://drive.google.com/open?id=1rXVOZFntzKG-aVKjPRJtCvTYwhrdSPoK>