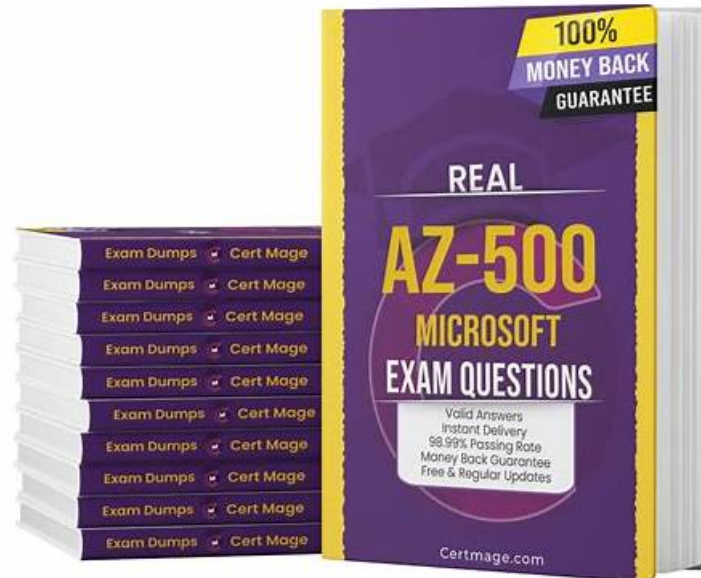


Exclusive AZ-500 Exam Questions And AZ-500 Dumps For The 2026 Exam



2026 Latest TestPassed AZ-500 PDF Dumps and AZ-500 Exam Engine Free Share: <https://drive.google.com/open?id=15STtbmMDU2JVe0Y84wkSLjNOysXktJA6>

Are you often regretful that you have purchased an inappropriate product? Unlike other platforms for selling test materials, in order to make you more aware of your needs, AZ-500 test preps provide sample questions for you to download for free. You can use the sample questions to learn some of the topics about AZ-500 learn torrent and familiarize yourself with the AZ-500 Quiz torrent in advance. If you feel that the AZ-500 quiz torrent is satisfying to you, you can choose to purchase our complete question bank. After the payment, you will receive the email sent by the system within 5-10 minutes. Click on the login to start learning immediately with AZ-500 test preps. No need to wait.

Microsoft AZ-500 Exam covers a wide range of topics related to cloud security, including managing identity and access, implementing platform protection, securing data and applications, and managing security operations. Candidates should have a strong understanding of Azure services and technologies, as well as experience in implementing security controls in a cloud environment.

>> AZ-500 Valid Test Braindumps <<

Features of TestPassed Microsoft AZ-500 Web-Based Practice Questions

In the increasingly competitive IT industry, AZ-500 certification exam seems to be the basic condition of the development of the industry. If you want to pass the AZ-500 exam certification easier and quicker, it's a very feasible way for you to take advantage of TestPassed's Microsoft AZ-500 Exam Training materials. We promise that after you purchase AZ-500 exam dumps, if you fail the AZ-500 exam certification, we will give a full refund.

Microsoft AZ-500 exam is designed to test an individual's understanding and proficiency in various security aspects of the Azure platform. Microsoft Azure Security Technologies certification is suitable for security professionals, Azure architects, and anyone who is responsible for securing the Azure environment. It covers topics such as identity and access management, platform protection, data and application protection, and security management.

Microsoft Azure is a widely popular cloud computing platform that is relied upon by businesses around the world. As more and more companies move their operations to the cloud, the need for skilled Azure professionals has never been greater. One such

certification that is highly valued in the industry is the Microsoft AZ-500 (Microsoft Azure Security Technologies) certification exam.

Microsoft Azure Security Technologies Sample Questions (Q150-Q155):

NEW QUESTION # 150

You create resources in an Azure subscription as shown in the following table.

Name	Type	Region
RG1	Resource group	West Europe
VNET1	Azure virtual network	West Europe
Contoso1901	Azure Storage account	West Europe

VNET1 contains two subnets named Subnet1 and Subnet2. Subnet1 has a network ID of 10.0.0.0/24. Subnet2 has a network ID of 10.1.1.0/24.

Contoso1901 is configured as shown in the exhibit. (Click the

```
PS C:\> (Get-AzStorageAccount -ResourceGroupName RG1 -Name contoso1901).NetworkRuleSet
ByPass          : Logging, Metrics
DefaultAction   : Deny
IpRules         : [193.77.0.0/16,...]
VirtualNetworkRules : [/subscriptions/a90c8c8f-d8bc-4112-abfb-dac4906573dd/resourceGroups/
                    RG1/providers/Microsoft.Network/virtualNetworks/VNET1/subnets/Subnet1... ]

PS C:\> (Get-AzStorageAccount -ResourceGroupName RG1 -Name contoso1901).NetworkRuleSet.
                    IpRules
Action  IPAddressOrRange
-----  -----
Allow  193.77.0.0/16

PS C:\> (Get-AzStorageAccount -ResourceGroupName RG1 -Name contoso1901).NetworkRules
Action  VirtualNetworkResourceId  State
-----  -----
Allow  /subscriptions/a90c8c8f-d8bc-4112-abfb-dac4906573dd/resourceGroups/
                    RG1/providers/Microsoft.Network/virtualNetworks/VNET1/subnets/Subnet1  Succeeded

PS C:\>
```

For each of the following statements, select Yes if the statement is true. Otherwise, select No.

NOTE: Each correct selection is worth one point.

Statements	Yes	No
An Azure virtual machine on Subnet1 can access data in Contoso1901.	<input type="radio"/>	<input type="radio"/>
An Azure virtual machine on Subnet2 can access data in Contoso1901.	<input type="radio"/>	<input type="radio"/>
A computer on the Internet that has an IP address of 193.77.10.2 can access data in Contoso1901.	<input type="radio"/>	<input type="radio"/>

Answer:

Explanation:

Statements	Yes	No
An Azure virtual machine on Subnet1 can access data in Contoso1901.	<input checked="" type="radio"/>	<input type="radio"/>
An Azure virtual machine on Subnet2 can access data in Contoso1901.	<input type="radio"/>	<input checked="" type="radio"/>
A computer on the Internet that has an IP address of 193.77.10.2 can access data in Contoso1901.	<input checked="" type="radio"/>	<input type="radio"/>

Explanation

Statements	Yes	No
An Azure virtual machine on Subnet1 can access data in Contoso1901.	<input checked="" type="radio"/>	<input type="radio"/>
An Azure virtual machine on Subnet2 can access data in Contoso1901.	<input type="radio"/>	<input checked="" type="radio"/>
A computer on the Internet that has an IP address of 193.77.10.2 can access data in Contoso1901.	<input checked="" type="radio"/>	<input type="radio"/>

Box 1: Yes

Access from Subnet1 is allowed.

Box 2: No

No access from Subnet2 is allowed.

Box 3: Yes

Access from IP address 193.77.10.2 is allowed.

NEW QUESTION # 151

Use the following login credentials as needed:

To enter your username, place your cursor in the Sign in box and click on the username below.

To enter your password, place your cursor in the Enter password box and click on the password below.

Azure Username: User1-10598168@ExamUsers.com

Azure Password: Ag1Bh9!#Bd

The following information is for technical support purposes only:

Lab Instance: 10598168

Microsoft Azure

Microsoft
Sign in
to continue to Microsoft Azure

Email, phone, or Skype

No account? [Create one!](#)
Can't access your account?

Next

Sign in with GitHub

Terms of use Privacy & cookies

8:39 AM 11/15/2019

Microsoft Azure

Home - Microsoft Azure x | Search resources, services, and docs (0/177) | User1-10598168@Exam... MICROSOFT EXAMS

Azure services

- Create a resource
- Virtual machines
- App Services
- Storage accounts
- SQL databases
- Azure Database for PostgreSQL
- Azure Cosmos DB
- Kubernetes services
- Function App
- More services

Navigate

- Subscriptions
- Resource groups
- All resources
- Dashboard

Tools

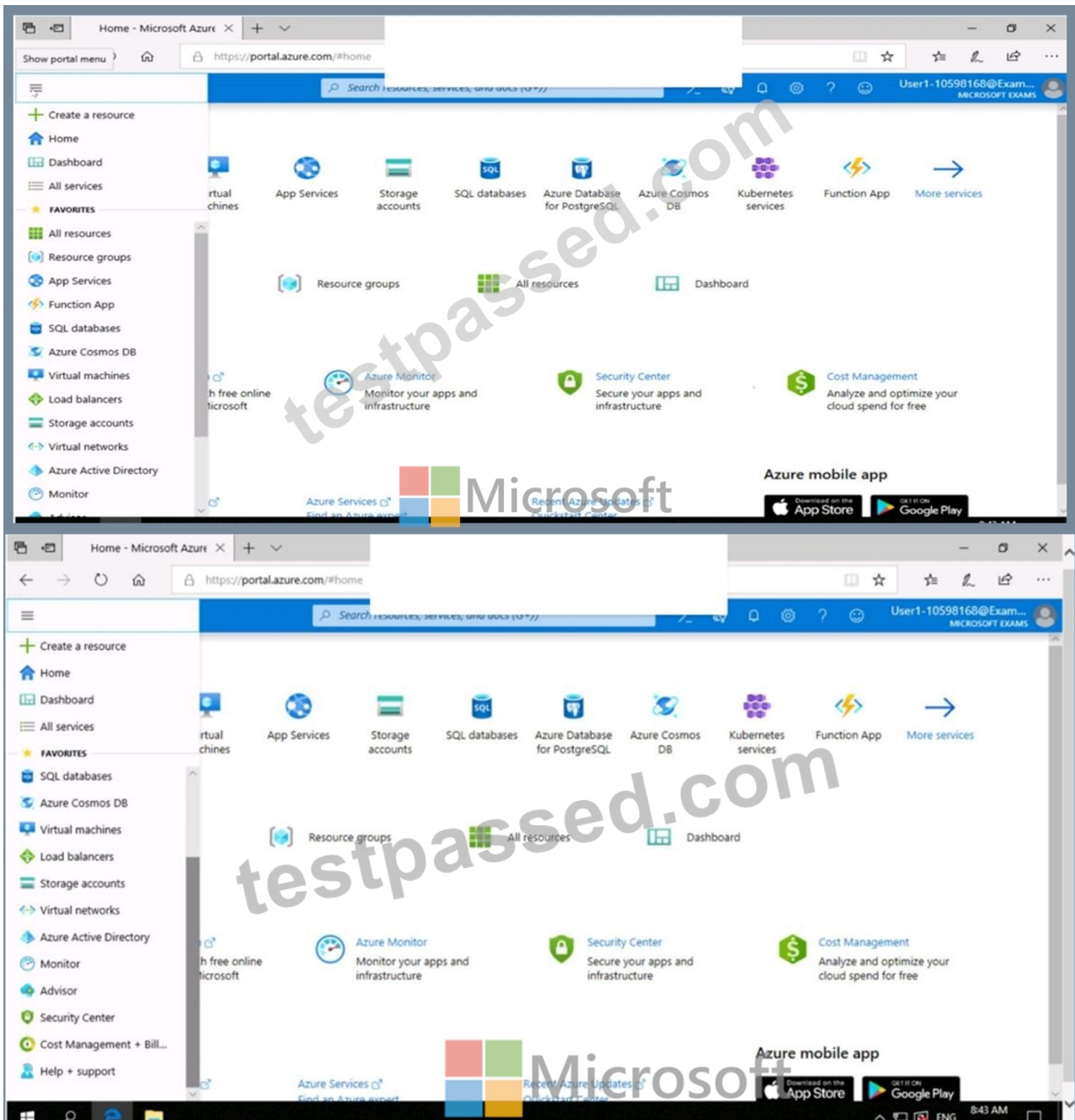
- Microsoft Learn ^o
Learn Azure with free online training from Microsoft
- Application Monitor ^o
Monitor your apps and infrastructure
- Security Center ^o
Secure your apps and infrastructure
- Cost Management ^o
Analyze and optimize your cloud spend for free

Useful links

- Technical Documentation ^o
Azure Migration Tools
- Azure Services ^o
Find an Azure expert
- Recent Azure Updates ^o
CloudWatch Center

Azure mobile app

Download on the App Store | GET IT ON Google Play



You need to prevent administrative users from accidentally deleting a virtual network named VNET1. The administrative users must be allowed to modify the settings of VNET1.

To complete this task, sign in to the Azure portal.

Answer:

Explanation:

See the explanation below.

Explanation

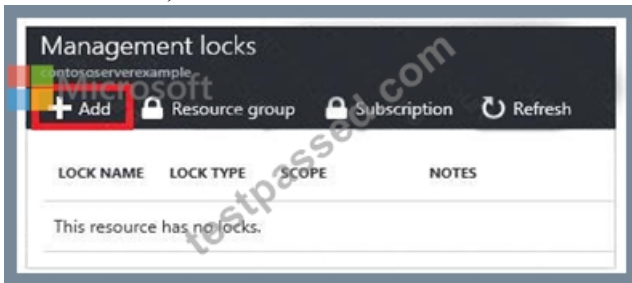
Locking prevents other users in your organization from accidentally deleting or modifying critical resources, such as Azure subscription, resource group, or resource.

Note: In Azure, the term resource refers to an entity managed by Azure. For example, virtual machines, virtual networks, and storage accounts are all referred to as Azure resources.

1. In the Settings blade for virtual network VNET, select Locks.



2. To add a lock, select Add.



3. For Lock type select Delete lock, and click OK

Reference:

<https://docs.microsoft.com/en-us/azure/azure-resource-manager/resource-group-lock-resources>

NEW QUESTION # 152

Note: This question is part of a series of questions that present the same scenario. Each question in the series contains a unique solution that might meet the stated goals. Some question sets might have more than one correct solution, while others might not have a correct solution.

After you answer a question in this section, you will NOT be able to return to it. As a result, these questions will not appear in the review screen.

You have an Azure Subscription named Sub1.

You have an Azure Storage account named Sa1 in a resource group named RG1.

Users and applications access the blob service and the file service in Sa1 by using several shared access signatures (SASs) and stored access policies.

You discover that unauthorized users accessed both the file service and the blob service.

You need to revoke all access to Sa1.

Solution: You create a new stored access policy.

Does this meet the goal?

- A. No
- B. Yes

Answer: A

Explanation:

Explanation

Shared access signatures provides access to a particular resource such as blob. Stored access policies are a group of Shared Access Signatures (SAS). In order to revoke access to a SAS you can either:

1. Rotate the Key1 or Key 2, that is the access keys used to sign the SAS. Rotating the access keys used to sign the SAS, invalidates any previously signed SAS hence revoking the SAS issued before
2. Remove the stored access policy which an SAS is linked to. If a Stored Access Policy is removed, it also invalidates the SASs

linked to the Stored Access Policy.

NEW QUESTION # 153

You have an Azure AD tenant named contoso.com that has Azure AD Premium P1 licenses.

You need to create a group named Group1 that will be assigned the Global reader role.

Which portal should you use to create Group1 and which type of group should you create? To answer, select the appropriate options in the answer area.

NOTE: Each correct selection is worth one point

Portal:
The Azure Active Directory admin center only
The Microsoft 365 admin center only
The Azure Active Directory admin center or the Microsoft 365 admin center

Group type:
Security only
Microsoft 365 only
Security or mail-enabled security only
Security or Microsoft 365 only
Security, Microsoft 365, or mail-enabled security

Answer:

Explanation:

Portal:
The Azure Active Directory admin center only |
The Microsoft 365 admin center only
The Azure Active Directory admin center or the Microsoft 365 admin center

Group type:
Security only |
Microsoft 365 only
Security or mail-enabled security only
Security or Microsoft 365 only
Security, Microsoft 365, or mail-enabled security

Explanation:

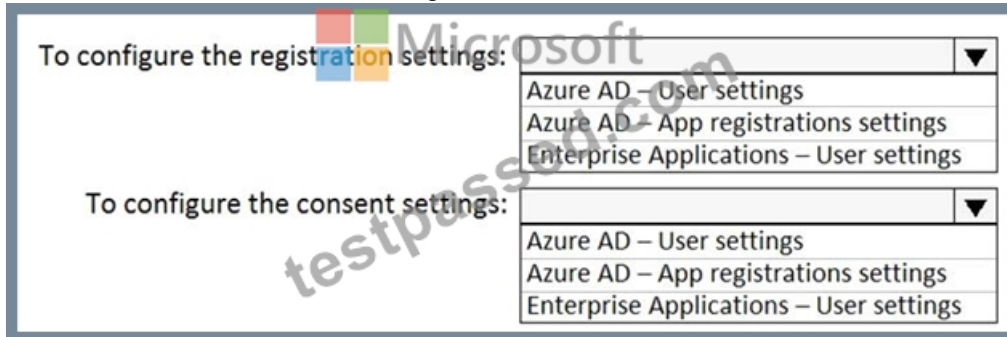
Portal:
The Azure Active Directory admin center only
The Microsoft 365 admin center only
The Azure Active Directory admin center or the Microsoft 365 admin center

Group type:
Security only
Microsoft 365 only
Security or mail-enabled security only
Security or Microsoft 365 only
Security, Microsoft 365, or mail-enabled security

NEW QUESTION # 154

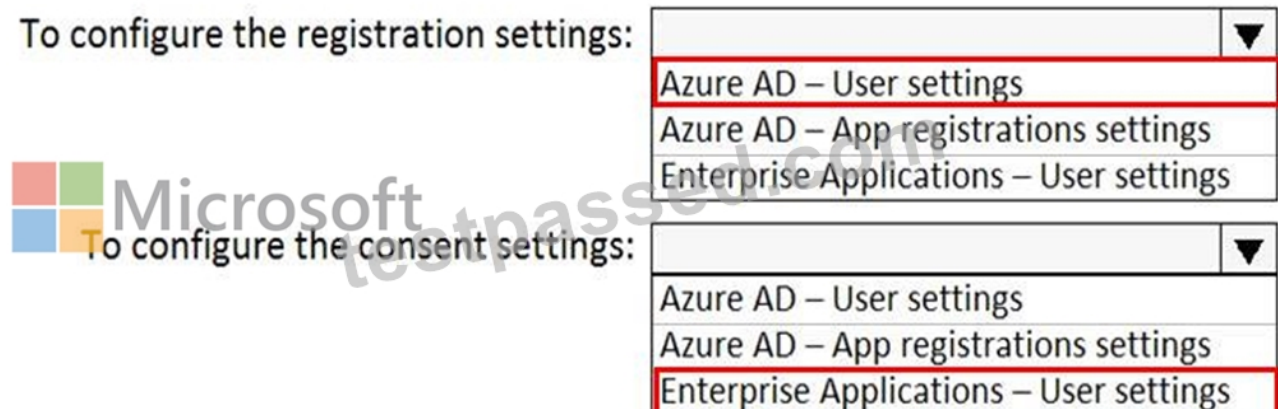
You need to ensure that the Azure AD application registration and consent configurations meet the identity and access requirements. What should you use in the Azure portal? To answer, select the appropriate options in the answer area.

NOTE: Each correct selection is worth one point.



Answer:

Explanation:



Reference:

<https://docs.microsoft.com/en-us/azure/active-directory/manage-apps/configure-user-consent> This is a case study. Case studies are not timed separately. You can use as much exam time as you would like to complete each case. However, there may be additional case studies and sections on this exam. You must manage your time to ensure that you are able to complete all questions included on this exam in the time provided.

To answer the questions included in a case study, you will need to reference information that is provided in the case study. Case studies might contain exhibits and other resources that provide more information about the scenario that is described in the case study. Each question is independent of the other question on this case study.

At the end of this case study, a review screen will appear. This screen allows you to review your answers and to make changes before you move to the next sections of the exam. After you begin a new section, you cannot return to this section.

To start the case study

To display the first question on this case study, click the Next button. Use the buttons in the left pane to explore the content of the case study before you answer the questions. Clicking these buttons displays information such as business requirements, existing environment, and problem statements. If the case study has an All Information tab, note that the information displayed is identical to the information displayed on the subsequent tabs. When you are ready to answer a question, click the Question button to return to the question.

Overview

Contoso, Ltd. is a consulting company that has a main office in Montreal and two branch offices in Seattle and New York.

The company hosts its entire server infrastructure in Azure.

Contoso has two Azure subscriptions named Sub1 and Sub2. Both subscriptions are associated to an Azure Active Directory (Azure AD) tenant named contoso.com.

Topic 3, Fabrikam inc

General Overview

Fabrikam, Inc. is a consulting company that has a main office in Montreal and branch offices in Seattle and New York. Fabrikam has IT, human resources (HR), and finance departments.

Existing Environment

Network Environment

Fabrikam has a Microsoft 365 subscription and an Azure subscription named subscription1.

The network contains an on-premises Active Directory domain named Fabrikam.com. The domain contains two organizational units (OUs) named OU1 and OU2. Azure AD Connect cloud sync syncs only OU1.

The Azure resources hierarchy is shown in the following exhibit.



The Azure Active Directory (Azure AD) tenant contains the users shown in the following table.

Name	Type	Directory-synced	Role	Delegated to
User1	User	Yes	User	None
Admin1	User	No	User Access Administrator	Tenant Root Group
Admin2	User	No	Security administrator	MG1
Admin3	User	No	Contributor	Subscription1
Admin4	User	No	Owner	RG1
Group1	Group	No	Not applicable	None

Azure AD contains the resources shown in the following table.

Name	Type	Setting
CAPolicy1	Conditional access policy	Users in the finance department must use multi-factor authentication (MFA) when accessing Microsoft SharePoint Online
Sentinel1	Azure Sentinel workspace	Not applicable
SecPol1	Azure Policy definition	Security configuration for virtual machines

Subscription1 Resources

Subscription1 contains the virtual networks shown in the following table.

Name	Subnet	Location	Peer
VNET1	Subnet1, Subnet2	West US	VNET2, VNET3
VNET2	Subnet1	Central US	VNET1, VNET3
VNET3	Subnet1	West US	VNET1, VNET2

Subscription1 contains the network security groups (NSGs) shown in the following table.

Name	Location
NSG2	West US
NSG3	Central US
NSG4	West US

Subscription1 contains the virtual machines shown in the following table.

Name	Operating system	Location	Connected to	Associated NSG
VM1	Windows Server 2019	West US	VNET1/Subnet1	None
VM2	CentOS-based 8.2	West US	VNET1/Subnet2	NSG2
VM3	Windows Server 2016	Central US	VNET2/Subnet1	NSG3
VM4	Ubuntu Server 18.04 LTS	West US	VNET3/Subnet1	NSG4

Subscription1 contains the Azure key vaults shown in the following table.

Name	Location	Pricing tier	Private endpoint
KeyVault1	West US	Standard	VNET1/Subnet1
KeyVault2	Central US	Premium	None
KeyVault3	East US	Premium	VNET1/Subnet1, VNET2/Subnet1, VNET3/Subnet1

Subscription1 contains a storage account named storage1 in the West US Azure region.

Planned Changes and Requirements

Planned Changes

Fabrikam plans to implement the following changes:

Create two application security groups as shown in the following table.

Name	Location
ASG1	West US
ASG2	Central US

Associate the network interface of VM1 to ASG1.

Deploy SecPoll by using Azure Security Center.

Deploy a third-party app named App1. A version of App1 exists for all available operating systems.

Create a resource group named RG2.

Sync OU2 to Azure AD.

Add User1 to Group1.

Technical Requirements

Fabrikam identifies the following technical requirements:

The finance department users must reauthenticate after three hours when they access SharePoint Online.

Storage1 must be encrypted by using customer-managed keys and automatic key rotation.

From Sentinel1, you must ensure that the following notebooks can be launched:

Entity Explorer - Account

Entity Explorer - Windows Host

Guided Investigation Process Alerts

VM1, VM2, and VM3 must be encrypted by using Azure Disk Encryption.

Just in time (JIT) VM access for VM1, VM2, and VM3 must be enabled.

App1 must use a secure connection string stored in KeyVault1.

KeyVault1 traffic must NOT travel over the internet.

NEW QUESTION # 155

.....

Test AZ-500 Collection: <https://www.testpassed.com/AZ-500-still-valid-exam.html>

- Excellent AZ-500 Valid Test Braindumps - Pass AZ-500 Exam [www.troytecdumps.com] is best website to obtain AZ-500 for free download AZ-500 Pdf Braindumps
- Golden Opportunity to Get Big Discount on Microsoft AZ-500 Questions with 365 days Free Updates Immediately open [www.pdfvce.com] and search for "AZ-500" to obtain a free download AZ-500 Valid Exam Pattern

- 100% Pass 2026 Authoritative Microsoft AZ-500 Valid Test Braindumps ☐ Copy URL 《 www.dumpsquestion.com 》 open and search for ⇒ AZ-500 ⇐ to download for free ☐ Practice AZ-500 Exams
- Latest Microsoft AZ-500 Dumps - Eliminate Your Risk of Failing [2026] ☐ Go to website ☐ www.pdfvce.com ☐ open and search for [AZ-500] to download for free ☐ AZ-500 Valid Exam Pattern
- 100% Pass 2026 Authoritative Microsoft AZ-500 Valid Test Braindumps ☐ ▶ www.practicevce.com ◀ is best website to obtain 「 AZ-500 」 for free download ☐ AZ-500 Reliable Test Pattern
- Valid Braindumps AZ-500 Sheet ☐ Reliable AZ-500 Exam Registration ☐ AZ-500 Testking ☐ Search for ☐ AZ-500 ☐ and download it for free immediately on ☐ www.pdfvce.com ☐ ☐ AZ-500 Valid Study Questions
- Test AZ-500 Assessment ☐ Formal AZ-500 Test ☐ AZ-500 Reliable Test Pattern ☐ Search for ☐ AZ-500 ☐ on ➡ www.validtorrent.com ☐ immediately to obtain a free download ☐ AZ-500 New Dumps Ebook
- Golden Opportunity to Get Big Discount on Microsoft AZ-500 Questions with 365 days Free Updates ☐ Open website [www.pdfvce.com] and search for ▶ AZ-500 ◀ for free download ☐ Test AZ-500 Dumps Free
- Accurate 100% Free AZ-500 – 100% Free Valid Test Braindumps | Test AZ-500 Collection ☐ The page for free download of 《 AZ-500 》 on 「 www.verifiedumps.com 」 will open immediately ☐ Online AZ-500 Test
- Valid Braindumps AZ-500 Sheet ☐ AZ-500 Exam Paper Pdf ☐ AZ-500 Testking ☐ Search for 「 AZ-500 」 and obtain a free download on 「 www.pdfvce.com 」 ☐ AZ-500 Authorized Certification
- Accurate 100% Free AZ-500 – 100% Free Valid Test Braindumps | Test AZ-500 Collection ☐ Open website { www.pdfdumps.com } and search for ▶ AZ-500 ◀ for free download ☐ AZ-500 Valid Exam Pattern
- socialdosa.com, laraqtep264520.plpwiki.com, ok-social.com, cyrusygbz191014.bcbloggers.com, github.com, test.york360.ca, pixabay.com, learn.handywork.ng, teganyqqq401907.blogginaway.com, lilypcuh349946.blogrelation.com, Disposable vapes

P.S. Free 2026 Microsoft AZ-500 dumps are available on Google Drive shared by TestPassed: <https://drive.google.com/open?id=15STtbmMDU2JVe0Y84wkSLjNOysXktJA6>