

New 200-301 Braindumps Free - Practice 200-301 Mock



[May-2023] 200-301 Free Sample Questions to
Practice One Year Update [Q488-Q505]

P.S. Free 2026 Cisco 200-301 dumps are available on Google Drive shared by ExamBoosts: [https://drive.google.com/open?id=1QsfErBSVY_pzf\\$1aEH2_X-bIw4nYM24O](https://drive.google.com/open?id=1QsfErBSVY_pzf$1aEH2_X-bIw4nYM24O)

With the development of economic globalization, your competitors have expanded to a global scale. Obtaining an international 200-301 certification should be your basic configuration. What I want to tell you is that for 200-301 Preparation materials, this is a very simple matter. And as we can claim that as long as you study with our 200-301 learning guide for 20 to 30 hours, then you will pass the exam as easy as pie.

There may be a lot of people feel that the preparation process for 200-301 exams is hard and boring, and hard work does not necessarily mean good results, which is an important reason why many people are afraid of examinations. Today, our 200-301 Exam Materials will radically change this. High question hit rate makes you no longer aimless when preparing for the exam, so you just should review according to the content of our 200-301 study guide prepared for you.

>> New 200-301 Braindumps Free <<

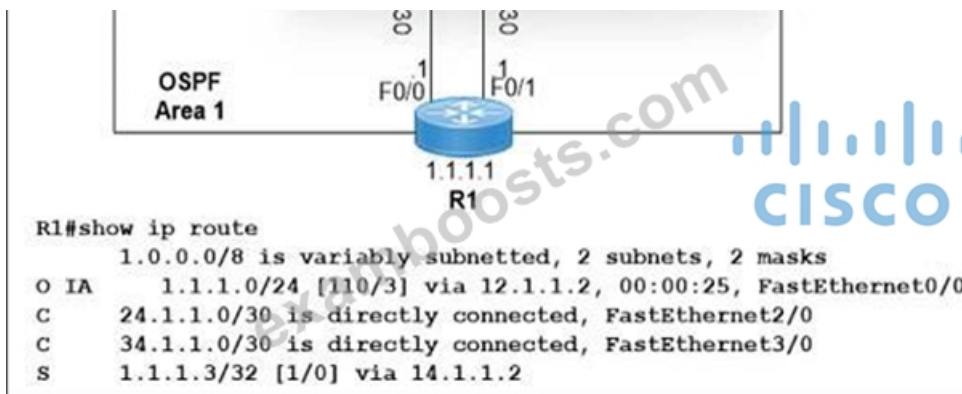
Precise New 200-301 Braindumps Free | Perfect Practice 200-301 Mock and Complete Passing Cisco Certified Network Associate Exam Score

Our 200-301 exam guide has high quality of service. We provide 24-hour online service. If you have any questions in the course of using the 200-301 exam questions, you can contact us by email. We will provide you with excellent after-sales service with the utmost patience and attitude. And we will give you detailed solutions to any problems that arise during the course of using the 200-301 practice torrent. And our 200-301 study materials welcome your supervision and criticism. With the company of our 200-301 study materials, you will find the direction of success.

Cisco Certified Network Associate Exam Sample Questions (Q516-Q521):

NEW QUESTION # 516

Refer to the exhibit.



Which two values does router R1 use to determine the best path to reach destinations in network 1.0.0.0/8?
(Choose two.)

- A. highest administrative distance
- **B. longest prefix match**
- **C. lowest metric**
- D. lowest cost to reach the next hop
- E. highest metric

Answer: B,C

NEW QUESTION # 517

Which 802.11 frame type is indicated by a probe response after a client sends a probe request?

- **A. management**
- B. action
- C. control
- D. data

Answer: A

Explanation:

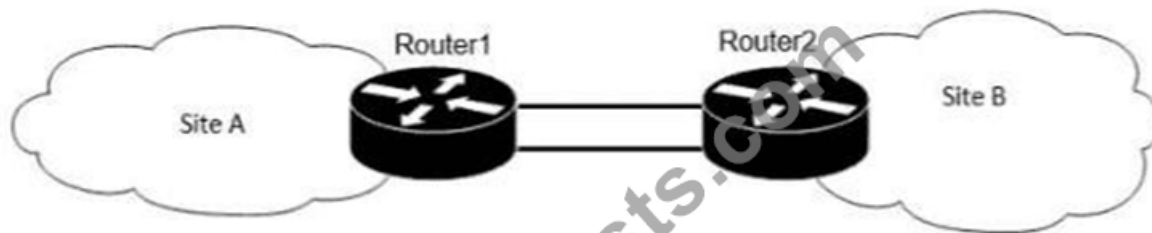
Management frames: Used for joining and leaving a wireless cell. Management frame types include association request, association response, and reassociation request, just to name a few.

Control frames: Used to acknowledge when data frames are received.

Data frames: Frames that contain data.

NEW QUESTION # 518

Refer to the exhibit.



```
Router2#show ip route
Gateway of last resort is not set
```

```
10.0.0.0/8 is variably subnetted, 4 subnets, 2 masks
C    10.10.10.8/30 is directly connected, FastEthernet0/2
C    10.10.10.12/30 is directly connected, FastEthernet0/1
O    10.10.13.0/25 [110/11] via 10.10.10.9, 00:00:03, FastEthernet0/2
    [110/11] via 10.10.10.13, 00:00:03, FastEthernet0/1
C    10.10.10.4/30 is directly connected, FastEthernet0/2
```

If OSPF is running on this network, how does Router 2 handle traffic from Site B to 10.10.13/25 at Site A?

- A. It sends packets out of interface Fa0/2 only.
- **B. It cannot send packets to 10.10.13 128/25**
- C. It load-balances traffic out of Fa0/1 and Fa0/2
- D. It sends packets out of interface Fa0/1 only.

Answer: B

Explanation:

Router2 does not have an entry for the subnet 10.10.13.128/25. It only has an entry for 10.10.13.0/25, which ranges from 10.10.13.0 to 10.10.13.127.

<https://study-ccna.com/administrative-distance-metric/>

NEW QUESTION # 519

Physical connectivity is implemented between the two Layer 2 switches, and the network connectivity between them must be configured.

1. Configure an LACP EtherChannel and number it as 44; configure it between switches SW1 and SW2 using interfaces Ethernet0/0 and Ethernet0/1 on both sides. The LACP mode must match on both ends.
2. Configure the EtherChannel as a trunk link.
3. Configure the trunk link with 802.1q tags.
4. Configure VLAN 'MONITORING' as the untagged VLAN of the EtherChannel.

Guidelines

This is a lab item in which tasks will be performed on virtual devices.

- * Refer to the Tasks tab to view the tasks for this lab item.
- * Refer to the Topology tab to access the device console(s) and perform the tasks.
- * Console access is available for all required devices by clicking the device icon or using the tab(s) above the console window.
- * All necessary preconfigurations have been applied.
- * Do not change the enable password or hostname for any device.
- * Save your configurations to NVRAM before moving to the next item.
- * Click Next at the bottom of the screen to submit this lab and move to the next question.
- * When Next is clicked, the lab closes and cannot be reopened.



Answer:

Explanation:

Solution is given below explanation.

Explanation:

To configure an LACP EtherChannel and number it as 44, configure it between switches SW1 and SW2 using interfaces Ethernet0/0 and Ethernet0/1 on both sides, configure the EtherChannel as a trunk link, configure the trunk link with 802.1q tags, and configure VLAN 'MONITORING' as the untagged VLAN of the EtherChannel, you need to follow these steps:

- * On both SW1 and SW2, enter the global configuration mode by using the configure terminal command.
- * On both SW1 and SW2, select the two interfaces that will form the EtherChannel by using the interface range ethernet 0/0 - 1 command. This will enter the interface range configuration mode.
- * On both SW1 and SW2, set the protocol to LACP by using the channel-protocol lacp command.
- * On both SW1 and SW2, assign the interfaces to an EtherChannel group number 44 by using the channel-group 44 mode active command. This will create a logical interface named Port-channel44 and set the LACP mode to active on both ends. The LACP mode must match on both ends for the EtherChannel to form.
- * On both SW1 and SW2, exit the interface range configuration mode by using the exit command.
- * On both SW1 and SW2, enter the Port-channel interface configuration mode by using the interface port- channel 44 command.
- * On both SW1 and SW2, configure the Port-channel interface as a trunk link by using the switchport mode trunk command.
- * On both SW1 and SW2, configure the Port-channel interface to use 802.1q tags for VLAN identification by using the switchport trunk encapsulation dot1q command.
- * On both SW1 and SW2, configure VLAN 'MONITORING' as the untagged VLAN of the Port-channel interface by using the switchport trunk native vlan MONITORING command.
- * On both SW1 and SW2, exit the Port-channel interface configuration mode by using the exit command.
- * On both SW1 and SW2, save the configuration to NVRAM by using the copy running-config startup- config command.

NEW QUESTION # 520

Refer to the exhibit.

```

R1# show ip route | begin Gateway
Gateway of last resort is 0.0.0.0 to network 0.0.0.0
S* 0.0.0.0/0 is directly connected, Serial0/0/1
    172.16.0.0/16 is variably subnetted, 4 subnets, 2 masks
C    172.16.2.0/24 is directly connected, GigabitEthernet0/0
L    172.16.2.2/32 is directly connected, GigabitEthernet0/0
C    172.16.4.0/21 is directly connected, Serial0/0/1
L    172.16.8.2/32 is directly connected, Serial0/0/1

```

What is the subnet mask for route 172.16.4.0?

- A. 255.255.255.192

- Answer: D**

• • • • •

- Free PDF High-quality Cisco - New 200-301 Braindumps Free ☐ Copy URL ➤ www.practicevce.com ☐ open and search for ➡ 200-301 ☐ to download for free ☐200-301 Test Voucher
- 100% Pass Quiz Cisco 200-301 - High Hit-Rate New Cisco Certified Network Associate Exam Braindumps Free ☐ Search for ➡ 200-301 ☐ and download it for free on 《 www.pdfvce.com 》 website ☐Best 200-301 Practice
- 100% Pass Quiz Cisco - The Best 200-301 - New Cisco Certified Network Associate Exam Braindumps Free ☐ Immediately open ▶ www.prep4away.com ◀ and search for { 200-301 } to obtain a free download ☐Latest 200-301 Exam Simulator
- 100% Pass Quiz Cisco 200-301 - High Hit-Rate New Cisco Certified Network Associate Exam Braindumps Free ☐ Copy URL 「 www.pdfvce.com 」 open and search for ➡ 200-301 ☐ to download for free ☐200-301 Top Dumps
- Exam 200-301 Pass Guide ☐ Latest 200-301 Test Report ☐ Test 200-301 Engine Version ☐ Search for ▷ 200-301 ◁ and easily obtain a free download on ➡ www.prepawayete.com ☐☐☐ ☐200-301 Latest Learning Materials
- Exam 200-301 Pass Guide ⇄ Latest 200-301 Exam Simulator ☐ Cert 200-301 Exam ☐ Download “ 200-301 ” for free by simply searching on 《 www.pdfvce.com 》 ☐Latest 200-301 Test Report
- 100% Pass Quiz Cisco - The Best 200-301 - New Cisco Certified Network Associate Exam Braindumps Free ☐ Search for ➡ 200-301 ☐ and download it for free on 《 www.dumpsquestion.com 》 website ⓂExam 200-301 Pass Guide
- 200-301 Valid Test Pdf ☐ Cert 200-301 Exam ☐ Online 200-301 Lab Simulation ☐ Enter ▷ www.pdfvce.com ◁ and search for ✓ 200-301 ☐✓☐ to download for free ☐Exam 200-301 Study Guide
- Exam 200-301 Pass Guide ☐ Exam 200-301 Study Guide ☐ 200-301 Practice Test Engine ☐ Download ✓ 200-301 ☐✓☐ for free by simply entering▷ www.testkingpass.com ◁ website ☐Dumps 200-301 Torrent
- Latest 200-301 Test Report ☐ Latest 200-301 Test Report ☐ 200-301 Practice Test Engine ☐ Search on ▶ www.pdfvce.com ◀ for ☼ 200-301 ☐☼☐ to obtain exam materials for free download ☐Online 200-301 Lab Simulation
- 100% Pass Quiz Cisco 200-301 - High Hit-Rate New Cisco Certified Network Associate Exam Braindumps Free ☐ Search for ☼ 200-301 ☐☼☐ on [www.pass4test.com] immediately to obtain a free download ☐200-301 Practice Test Engine
- myportal.utt.edu.tt, myportal.utt.edu.tt, myportal.utt.edu.tt, myportal.utt.edu.tt, myportal.utt.edu.tt, myportal.utt.edu.tt,

myportal.utt.edu.tt, myportal.utt.edu.tt, myportal.utt.edu.tt, myportal.utt.edu.tt, www.stes.tyc.edu.tw, www.stes.tyc.edu.tw, acrestonlineuniversity.net, myportal.utt.edu.tt, myportal.utt.edu.tt, myportal.utt.edu.tt, myportal.utt.edu.tt, myportal.utt.edu.tt, myportal.utt.edu.tt, myportal.utt.edu.tt, myportal.utt.edu.tt, myportal.utt.edu.tt, myportal.utt.edu.tt, forum.phuongnamedu.vn, www.stes.tyc.edu.tw, www.stes.tyc.edu.tw, www.stes.tyc.edu.tw, myportal.utt.edu.tt, myportal.utt.edu.tt, myportal.utt.edu.tt, myportal.utt.edu.tt, myportal.utt.edu.tt, myportal.utt.edu.tt, myportal.utt.edu.tt, myportal.utt.edu.tt, myportal.utt.edu.tt, myportal.utt.edu.tt, myportal.utt.edu.tt, Disposable vapes

BONUS!!! Download part of ExamBoosts 200-301 dumps for free: https://drive.google.com/open?id=1QsfErBSVY_pzfs1aEH2_X-bIw4nYM24O