

Quiz CompTIA - 220-1102 - CompTIA A+ Certification Exam: Core 2—High-quality Valid Test Book

CompTIA		Certification Details
CompTIA A+ 220-1102 (Core 2)		
 Prior Certification Not Required	 Exam Validity 3 Years	 Exam Fee \$ 239 USD
 Exam Duration 90 Minutes	 No. of Questions 90 Questions	 Passing Marks 700 (on a scale of 100-900)
 Recommended Experience 9 to 12 months hands-on experience in the lab or field		 Exam Format Multiple Choice, multiple select, drag and drop, performance based questions
 Languages English, German, Japanese, Portuguese, Thai, Spanish		

P.S. Free 2026 CompTIA 220-1102 dumps are available on Google Drive shared by ExamTorrent: https://drive.google.com/open?id=12ZkCKs0OSoDe5D_zpb5WgUKxzCDTlk0

To find the perfect 220-1102 practice materials for the exam, you search and re-search without reaching the final decision and compare advantages and disadvantages with materials in the market. With systemic and methodological content within our 220-1102 practice materials, they have helped more than 98 percent of exam candidates who chose our 220-1102 guide exam before getting the final certificates successfully.

CompTIA A+ certification is a widely recognized and respected certification in the IT industry. CompTIA A+ Certification Exam: Core 2 certification is designed to validate the skills and knowledge of entry-level IT professionals who are seeking to establish a career in the IT industry. The A+ certification is recognized by many employers as proof of a candidate's knowledge and skills in the field of IT. Candidates who obtain this certification are more likely to be hired by employers and can expect to receive higher salaries than those who do not hold this certification.

>> 220-1102 Valid Test Book <<

Valid 220-1102 Exam Voucher - New 220-1102 Braindumps Files

Keep making progress is a very good thing for all people. If you try your best to improve yourself continuously, you will that you will harvest a lot, including money, happiness and a good job and so on. The 220-1102 preparation exam from our company will help you keep making progress. Choosing our 220-1102 study material, you will find that it will be very easy for you to overcome your shortcomings and become a persistent person. If you decide to buy our 220-1102 study questions, you can get the chance that you will pass your 220-1102 exam and get the certification successfully in a short time.

CompTIA 220-1102 (CompTIA A+ Certification Exam: Core 2) Certification Exam is an industry-recognized certification exam that tests the skills and knowledge required to perform essential IT tasks. 220-1102 exam is part of the CompTIA A+ certification, which is one of the most widely recognized and respected IT certifications in the industry. The 220-1102 exam is designed to validate the skills necessary to install, configure, optimize, troubleshoot, repair, upgrade, and maintain PC hardware and software.

CompTIA 220-1102 exam, also known as the CompTIA A+ Certification Exam: Core 2, is one of two exams required to earn the CompTIA A+ certification. CompTIA A+ Certification Exam: Core 2 certification is widely recognized as the industry standard for entry-level IT professionals and validates their skills in troubleshooting and problem-solving, networking, operating systems, security, and more. The CompTIA 220-1102 Exam specifically covers topics such as configuring and managing operating systems, virtualization, cloud computing, mobile devices, and troubleshooting hardware and network issues. Passing 220-1102 exam requires a thorough understanding of these concepts and their practical applications.

CompTIA A+ Certification Exam: Core 2 Sample Questions (Q501-Q506):

NEW QUESTION # 501

A technician receives an invalid certificate error when visiting a website. Other workstations on the same local network are unable to replicate this issue. Which of the following is most likely causing the issue?

- A. UEFI boot mode
- B. User access control
- **C. Date and time**
- D. Log-on times

Answer: C

Explanation:

Date and time is the most likely cause of the issue. The date and time settings on a workstation affect the validity of the certificates used by websites to establish secure connections. If the date and time are incorrect, the workstation may not recognize the certificate as valid and display an invalid certificate error. Other workstations on the same local network may not have this issue if their date and time are correct. User access control, UEFI boot mode, and log-on times are not likely causes of the issue. User access control is a feature that prevents unauthorized changes to the system by prompting for confirmation or credentials. UEFI boot mode is a firmware interface that controls the boot process of the workstation. Log-on times are settings that restrict when a user can log in to the workstation. None of these factors affect the validity of the certificates used by websites. References:

* Official CompTIA learning resources CompTIA A+ Core 1 and Core 2, page 14

* CompTIA A+ Core 1 (220-1101) and Core 2 (220-1102) Cert Guide, page 456

NEW QUESTION # 502

Which of the following environmental controls is most important to maintain the safety of a data center?

- A. Power management control
- B. Humidity control
- **C. Temperature control**
- D. Fire suppression control

Answer: C

Explanation:

The most important environmental control to maintain the safety of a data center is Temperature control (A).

Proper temperature control is crucial to prevent overheating, which can lead to hardware failure, reduced performance, and shortened equipment lifespan. Data centers house high-density computing equipment that generates significant amounts of heat, making effective temperature management essential for maintaining operational stability and reliability.

NEW QUESTION # 503

A branch office suspects a machine contains ransomware. Which of the following mitigation steps should a technician take first?

- A. Educate the system user.
- B. Disable System Restore.
- **C. Quarantine the system.**
- D. Remediate the system.

Answer: C

Explanation:

The first mitigation step that a technician should take when a machine is suspected to contain ransomware is to quarantine the system. This means isolating the infected machine from the network and other devices, to prevent the ransomware from spreading and encrypting more data. The technician can quarantine the system by disconnecting the network cable, turning off the wireless adapter, or using firewall rules to block the traffic from and to the machine¹².

This step is more important than the other options because:

Disabling System Restore (A) is not a priority, as it will not stop the ransomware from running or spreading. System Restore is a feature that allows users to restore their system to a previous state, but it may not work if the ransomware has encrypted or deleted the restore points. Moreover, disabling System Restore may prevent the user from recovering some data or settings in the future¹³. Remediating the system (B) is the ultimate goal, but it cannot be done before quarantining the system. Remediating the system means removing the ransomware, restoring the data, and fixing the vulnerabilities that allowed the attack. However, this process requires careful analysis, planning, and execution, and it may not be possible if the ransomware is still active and communicating with the attackers. Therefore, the technician should first isolate the system and then proceed with the remediation steps¹².

Educating the system user © is a preventive measure, but it is not a mitigation step. Educating the system user means raising awareness and providing training on how to avoid ransomware attacks, such as by recognizing phishing emails, avoiding suspicious

links or attachments, and updating and patching the system regularly. However, this step will not help if the system is already infected, and it may not be effective if the user is not willing or able to follow the best practices. Therefore, the technician should focus on resolving the current incident and then educate the user as part of the recovery plan¹⁴.

Reference:

1: How to Mitigate Ransomware Attacks in 10 Steps - Heimdal Security¹ 2: 3 steps to prevent and recover from ransomware | Microsoft Security Blog³ 3: How to use System Restore on Windows 10 | Windows Central⁵ 4: Ransomware Mitigation | Prevention and Mitigation Strategies - Delinea⁴

NEW QUESTION # 504

A company wants to remove information from past users' hard drives in order to reuse the hard drives. Which of the following is the MOST secure method?

- A. Performing a quick format
- B. Reinstalling Windows
- C. Deleting all files from command-line interface
- D. Using disk-wiping software

Answer: D

NEW QUESTION # 505

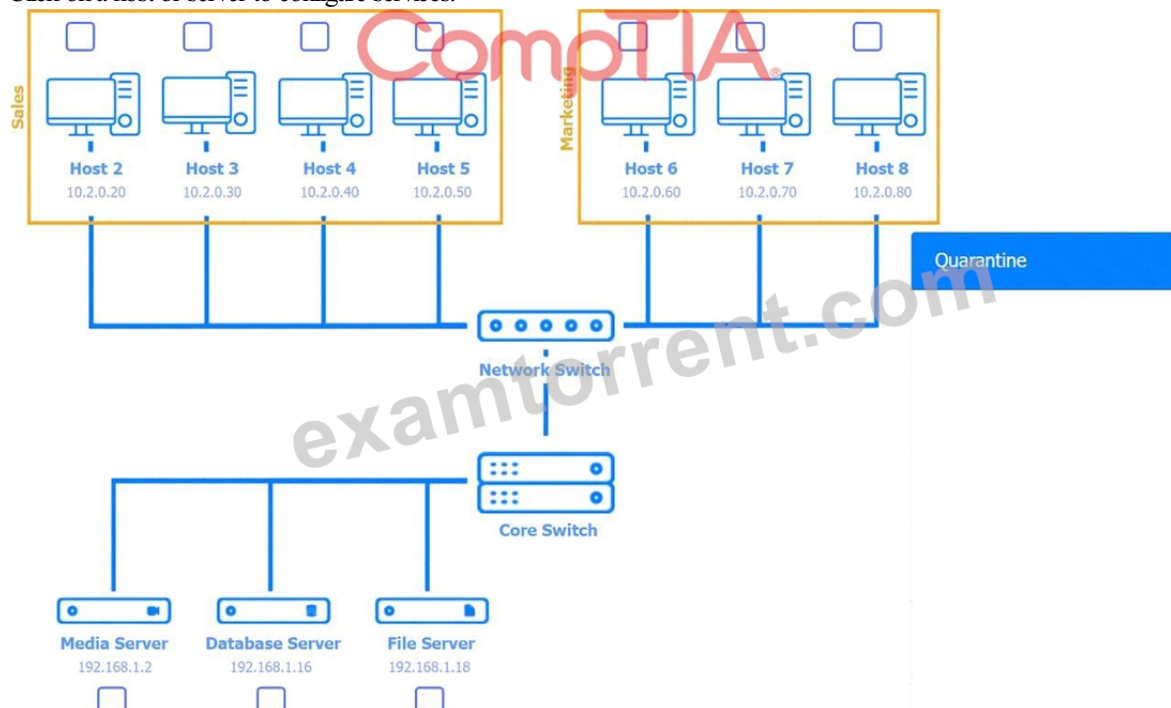
Multiple users are reporting audio issues as well as performance issues after downloading unauthorized software. You have been dispatched to identify and resolve any issues on the network using best practice procedures.

INSTRUCTIONS

Quarantine and configure the appropriate device(s) so that the users' audio issues are resolved using best practice procedures.

Multiple devices may be selected for quarantine.

Click on a host or server to configure services.



Host 2 Services



Name	Status
Application Information	<input type="text" value=""/>
Background Intelligent Transfer Service	Started <input type="text" value=""/>
Bluetooth Support Service	<input type="text" value=""/>
DHCP Client	Started <input type="text" value=""/>
DNS Client	Started <input type="text" value=""/>
Extensible Authentication Protocol	Started <input type="text" value=""/>
Network Connections	Started <input type="text" value=""/>
Netlogon	<input type="text" value=""/>
Offline Files	<input type="text" value=""/>
Parental Controls	<input type="text" value=""/>
Persistence.j1zpxn Installer Service	Started <input type="text" value=""/>

Host 2 Services



Name	Status
Volume Shadow Copy	<input type="text" value=""/>
Windows Audio	<input type="text" value=""/>
Windows Backup	<input type="text" value=""/>
Windows CardSpace	<input type="text" value=""/>
Windows Defender	<input type="text" value=""/>
Windows Event Log	Started <input type="text" value=""/>
Windows Firewall	<input type="text" value=""/>
Windows Installer	<input type="text" value=""/>
Windows Search	Started <input type="text" value=""/>
Windows Time	<input type="text" value=""/>
Windows Update	Started <input type="text" value=""/>

Media Server Services

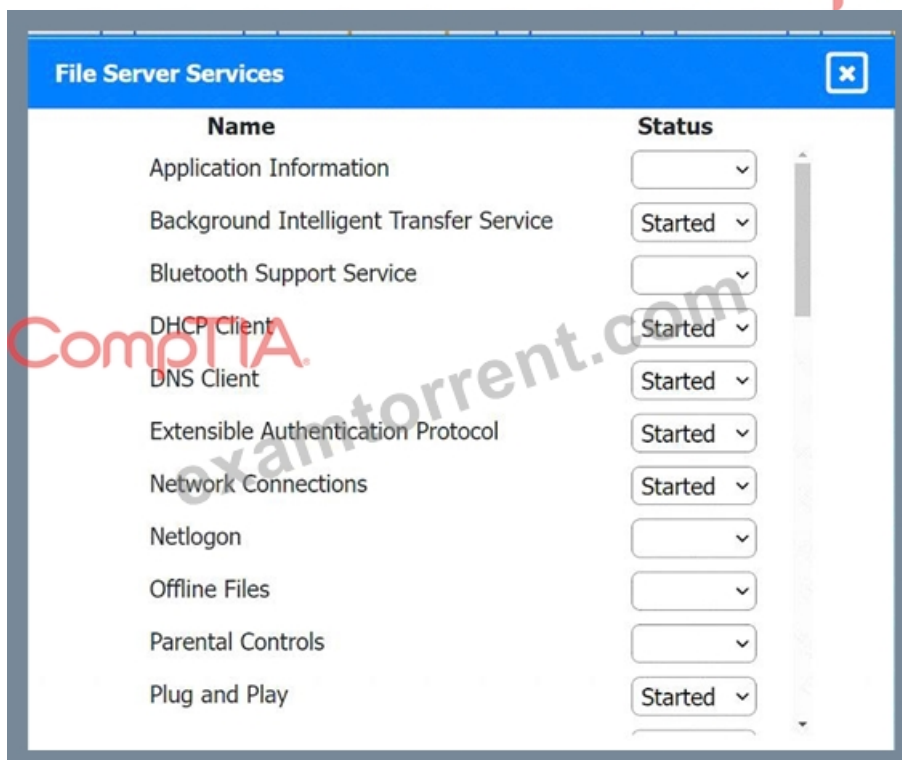


Name	Status
Application Information	<input type="button" value="v"/>
Background Intelligent Transfer Service	Started <input type="button" value="v"/>
Bluetooth Support Service	<input type="button" value="v"/>
DHCP Client	Started <input type="button" value="v"/>
DNS Client	Started <input type="button" value="v"/>
Extensible Authentication Protocol	Started <input type="button" value="v"/>
Network Connections	Started <input type="button" value="v"/>
Netlogon	<input type="button" value="v"/>
Offline Files	<input type="button" value="v"/>
Parental Controls	<input type="button" value="v"/>
Plug and Play	Started <input type="button" value="v"/>
	<input type="button" value="v"/>

Database Server Services



Name	Status
Application Information	<input type="button" value="v"/>
Background Intelligent Transfer Service	Started <input type="button" value="v"/>
Bluetooth Support Service	<input type="button" value="v"/>
DHCP Client	Started <input type="button" value="v"/>
DNS Client	Started <input type="button" value="v"/>
Extensible Authentication Protocol	Started <input type="button" value="v"/>
Network Connections	Started <input type="button" value="v"/>
Netlogon	<input type="button" value="v"/>
Offline Files	<input type="button" value="v"/>
Parental Controls	<input type="button" value="v"/>
Plug and Play	Started <input type="button" value="v"/>



Answer:

Explanation:

See the Explanation for the solution.

Explanation:

Host 2 and Media Server put them to Quarantine.

NEW QUESTION # 506

.....

Valid 220-1102 Exam Voucher: <https://www.examtorent.com/220-1102-valid-vce-dumps.html>

- Free PDF Quiz Professional 220-1102 - CompTIA A+ Certification Exam: Core 2 Valid Test Book □ Search for □ 220-1102 □ and easily obtain a free download on “ www.validtorrent.com ” □ 220-1102 Test Guide
- Ace exam on your first attempt with actual CompTIA 220-1102 questions □ The page for free download of (220-1102) on 《 www.pdfvce.com 》 will open immediately □ Exam 220-1102 Blueprint
- 100% Pass 220-1102 - Pass-Sure CompTIA A+ Certification Exam: Core 2 Valid Test Book □ Search for 《 220-1102 》 and download it for free immediately on □ www.exam4labs.com □ □ Valid 220-1102 Test Vce
- 100% Pass 220-1102 - Pass-Sure CompTIA A+ Certification Exam: Core 2 Valid Test Book □ Go to website 【 www.pdfvce.com 】 open and search for “ 220-1102 ” to download for free □ Latest 220-1102 Test Guide
- Free PDF Quiz Professional 220-1102 - CompTIA A+ Certification Exam: Core 2 Valid Test Book □ Download “ 220-1102 ” for free by simply searching on 【 www.practicevce.com 】 □ Test 220-1102 Free
- Top Features of Pdfvce CompTIA 220-1102 Real Exam Questions □ Search for (220-1102) on ▸ www.pdfvce.com ◀ immediately to obtain a free download □ 220-1102 Test Guide
- Exam 220-1102 Blueprint □ Exam 220-1102 Papers □ 220-1102 Boot Camp □ Download ☀ 220-1102 □ ☀ □ for free by simply searching on ▸ www.torrentvce.com □ □ 220-1102 Exam Dumps.zip
- Get the Best Accurate 220-1102 Valid Test Book and Pass Exam in First Attempt □ Open 【 www.pdfvce.com 】 enter { 220-1102 } and obtain a free download □ 220-1102 Valid Exam Syllabus
- 220-1102 Exam Fee □ Exam 220-1102 Papers □ Test 220-1102 Free □ Go to website { www.vceengine.com } open and search for ▸ 220-1102 ◀ to download for free □ Free 220-1102 Practice
- Free PDF Quiz Professional 220-1102 - CompTIA A+ Certification Exam: Core 2 Valid Test Book □ Open ➡ www.pdfvce.com □ enter □ 220-1102 □ and obtain a free download □ Exam 220-1102 Papers
- Pass 220-1102 Rate □ 220-1102 Exam Dumps.zip □ 220-1102 Regualer Update □ Search for (220-1102) and easily obtain a free download on ▸ www.exam4labs.com ◀ □ 220-1102 Exam Dumps.zip
- paidforarticles.in, 8090.hhh1234.com, bbs.t-firefly.com, www.stes.tyc.edu.tw, bbs.t-firefly.com, www.stes.tyc.edu.tw, www.stes.tyc.edu.tw, www.stes.tyc.edu.tw, www.stes.tyc.edu.tw, www.stes.tyc.edu.tw, www.goodgua.com, Disposable vapes

DOWNLOAD the newest ExamTorrent 220-1102 PDF dumps from Cloud Storage for free: https://drive.google.com/open?id=12ZkCKs0OSoDe5D_zpbb5WgUKxzCDTlk0