

New 300-510 Study Plan - Latest Test 300-510 Discount

Leads4Pass <https://www.leads4pass.com/300-510.html>
2024 Latest leads4pass 300-510 PDF and VCE dumps Download

300-510^{Q&As}

Implementing Cisco Service Provider Advanced Routing Solutions
(SPRI)

Pass Cisco 300-510 Exam with 100% Guarantee

Free Download Real Questions & Answers **PDF** and **VCE** file from:

<https://www.leads4pass.com/300-510.html>

100% Passing Guarantee
100% Money Back Assurance

Following Questions and Answers are all new published by Cisco
Official Exam Center

- ⚙️ **Instant Download** After Purchase
- ⚙️ **100% Money Back** Guarantee
- ⚙️ **365 Days** Free Update
- ⚙️ **800,000+** Satisfied Customers



What's more, part of that TestSimulate 300-510 dumps now are free: https://drive.google.com/open?id=1zy61DrgeXj5GGy54v76GJX_xPIR6RNKw

Our study materials will help you get the according certification you want to have. Believe me, after using our study materials, you will improve your work efficiency. You will get more opportunities than others, and your dreams may really come true in the near future. 300-510 Test Guide will make you more prominent in the labor market than others, and more opportunities will take the initiative to find you. Next, let's take a look at what is worth choosing from 300-510 learning question.

The candidate who has successfully passed the Cisco 300-510 certification exam will have relevant skills and knowledge in implementing advanced routing technologies, including BGP, OSPF, IS-IS, and MPLS. They will also have hands-on experience in configuring QoS, VPNs, and network security features. With the Cisco 300-510 Certification, individuals can confidently build, design, deploy, and troubleshoot high-performance and scalable routing solutions for service providers.

>> **New 300-510 Study Plan** <<

Latest Test 300-510 Discount - 300-510 Popular Exams

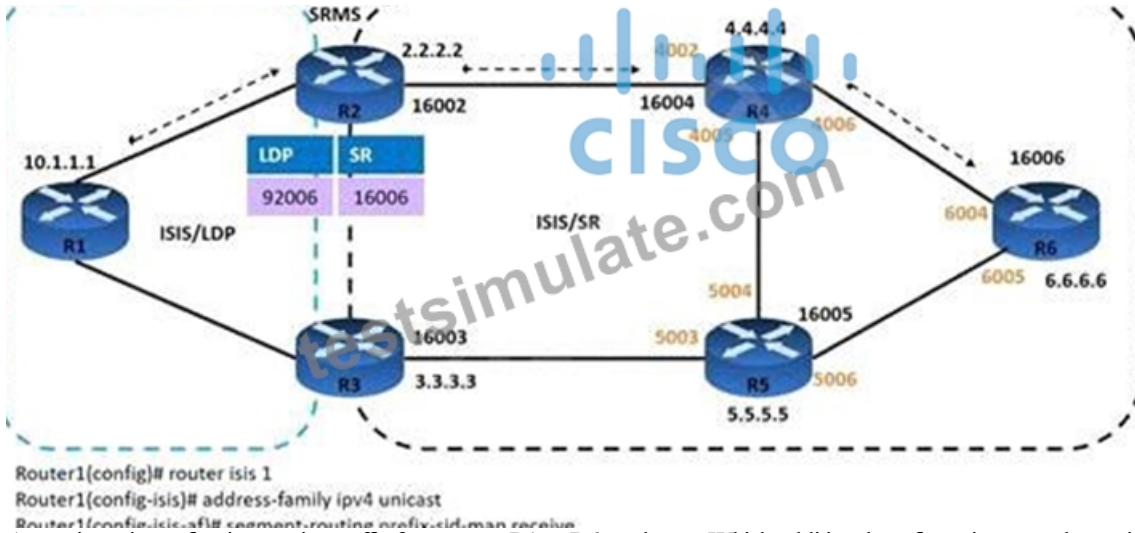
To help you prepare well, we offer three formats of our Cisco 300-510 exam product. These formats include Cisco 300-510 PDF dumps, Desktop Practice Tests, and web-based Cisco 300-510 practice test software. Your selection on the right tool to help you pass the 300-510 Exam and get the according certification matters a lot for the right 300-510 exam braindumps will spread you a lot of time and efforts.

Earning the Cisco 300-510 Certification can provide you with many benefits, including increased job opportunities, higher salaries, and greater credibility in the industry. Implementing Cisco Service Provider Advanced Routing Solutions certification is highly valued by employers and can help you stand out from other candidates when applying for jobs in the field of service provider networking.

Cisco Implementing Cisco Service Provider Advanced Routing Solutions Sample Questions (Q129-Q134):

NEW QUESTION # 129

Refer to the exhibit

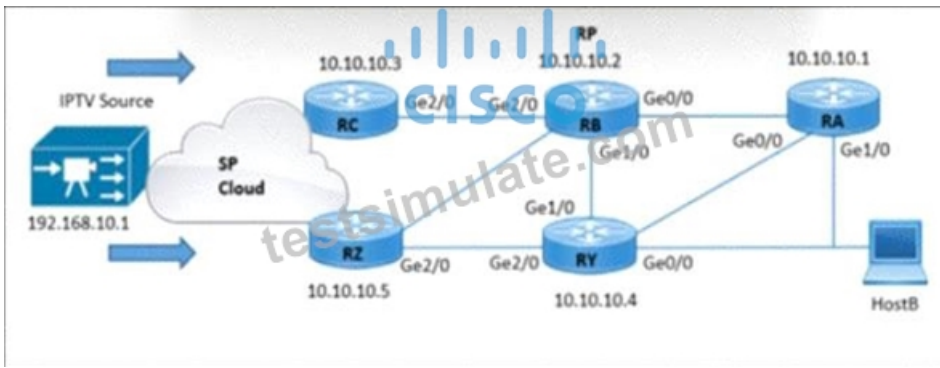


An engineer is configuring service traffic from router R1 to R6 as shown. Which additional configuration must the engineer implement so that the LDP and SR domains will participate and interwork with each other?

- A. Router2(config)# segment-routing
Router2(config-sr)# ldp mapping-server
Router2(config-sr-ms)# prefix-sid-map
Router2(config-sr-ms-map)#
Router2(config-sr-ms-map-af)# 2.2.2.2/32 500 range 4
- B. Router2(config)# segment-routing
Router2(config-sr)# sr mapping-server
Router2(config-sr-ms)# ldp-sid-map
Router2(config-sr-ms-map)# address-family ipv4
Router2(config-sr-ms-map-af)# 10.1.1.1/32 500 range 50
- C. Router2(config)# segment-routing
Router2(config-sr)# ldp mapping-server
Router2(config-sr-ms)# prefix-sid-map
Router2(config-sr-ms-map)# address-family ipv4
Router2(config-sr-ms-map-af)# 2.2.2.2/32 500 range 40
- D. Router2(config)# segment-routing
Router2(config-sr)# mapping-server
Router2(config-sr-ms)# prefix-sid-map
Router2(config-sr-ms-map)# address-family ipv4
Router2(config-sr-ms-map-af)# 10.1.1.1/32 500 range 50

Answer: D

NEW QUESTION # 130



Refer to the exhibit. HostB receives an IPTV traffic stream from the multicast source at 192.168.10.1. When router RB is powered down, it impacts multicast traffic forwarding to downstream peers. The RA and RB routers reside in the same physical location. Which two configurations must be implemented so that HostB receives the multicast stream even when RB is powered down? (Choose two)

- A. Set the RP address to 10.10.10.4 on all routers
- B. Set the backup RP address to 10.10.10.3 on routers RY and RZ.
- C. Enable PIM sparse mode on routers RC and RZ with a static RP address of 10.10.10.1.
- D. Enable PIM SSM mode on routers RA and RY.
- E. Enable bi-directional PIM on all routers.

Answer: C,D

NEW QUESTION # 131

Refer to the exhibit.

```

R1
interface gigabitethernet0/0
 ip address 192.168.2.1 255.255.255.0
 ip router isis
router isis
 net 49.0022.1111.1111.1111.00
 is-type level-1

R2
interface gigabitethernet0/1
 ip address 192.168.1.2 255.255.255.0
 ip router isis
router isis
 net 49.0021.1111.1111.1112.00
 is-type level-1
  
```

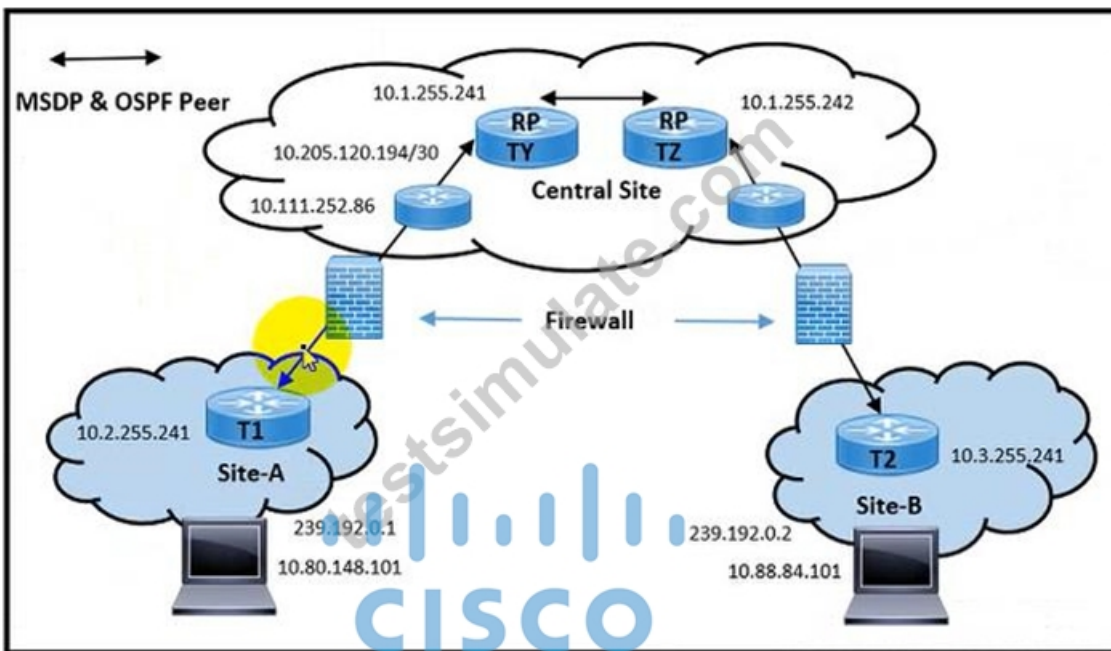
Routers R1 and R2 cannot form a neighbor relationship, but the network is otherwise configured correctly and operating normally. Which two statements describe the problem? (Choose two.)

- A. The two routers have the same network ID
- B. The two routers are in different subnets
- C. The two routers are in different areas
- D. The two routers have password mismatch issues
- E. The two routers are in the same area

Answer: B,C

NEW QUESTION # 132

Refer to the exhibit.



```
TZ# show ip msdp sa-cache rejected-SA det read-only <snip>
86854209.328, (10.80.148.101, 239.192.0.1), RP: 10.2.255.241, Peer:
10.1.255.241, Reason: rpf-fail -> learned from central site RT1 but not
accepted (originated from site A RT1)
86854209.328, (10.88.84.101, 239.192.0.2), RP: 10.3.255.241, Peer:
10.1.255.241, Reason: rpf-fail -> learned from central site RT1 but not
accepted (originated from site B RT1)

TZ# show ip rpf 10.1.255.241
RPF information for ? (10.1.255.241)
RPF interface: Vlan10
RPF neighbor: ? (10.111.254.9)
RPF route/mask: 10.1.255.241/32
RPF type: unicast (ospf 15)
Doing distance-preferred lookups across tables
RPF topology: ipv4 multicast base, originated from ipv4 unicast base

TZ# show ip route 10.1.255.241
Routing Table: CENT1
Routing entry for 10.1.255.241/32
Known via "ospf 15", distance 110, metric 3, type intra area
Last update from 10.111.254.9 on Vlan10, 1d22h ago
Routing Descriptor Blocks:
* 10.111.254.9, from 10.205.0.197, 1d22h ago, via Vlan10
Route metric is 3, traffic share count is 1
```

```
SDP Source-Active Cache - 2 entries
10.80.148.101, 239.192.0.1), RP 10.2.255.241, AS 7, 1d23h/00:05:42, Pee
0.2.255.241 -> learned from RT1 at site A (which is 10.2.255.241)
10.88.84.101, 239.192.0.2), RP 10.3.255.241, AS 7, 1d21h/00:05:31, Peer
0.3.255.241 -> learned from RT1 at site B (which is 10.3.255.241)

Y# sh ip rpf 10.2.255.241
PF information for ? (10.2.255.241)
PF interface: F09/1.1035
PF neighbor: ? (10.111.252.86)
PF route/mask: 10.2.255.241/32
PF type: unicast (ospf 15)
oing distance-preferred lookups across tables
PF topology: ipv4 multicast base, originated from ipv4 unicast base

Y# sh ip route 10.2.255.241
outing Table: CLNT1
outing entry for 10.2.255.241/32
nown via "ospf 15", distance 110, metric 150, type extern 2, forward
etric 2
ast update from 10.111.252.86 on FortyGigabitEthernet9/1.1035, 04:06:2
go
outing Descriptor Blocks:
10.111.252.86, from 10.205.120.195, 04:06:26 ago, via
ortyGigabitEthernet9/1.1035
oute metric is 150, traffic share count is 1
```

Refer to the exhibit. Multicast traffic destined from T1 and T2 routers to RP routers works well. A network engineer observes problems with multicast traffic flows between Site-A and Site-B. Site-A users fail to receive multicast stream on Site-B via RPTY site, while Site-B users fail to receive multicast stream on Site-A via RPTZ site. Which action must be implemented to resolve the issues?

- A. Allow the OSPF and MSDP packets on the firewall.
- B. Configure direct OSPF peering between Site-A and Site-B
- C. Establish MSDP peering with interface IP subnet.

- D. Configure Site-A and Site-B in 10.80.14804

Answer: A

NEW QUESTION # 133

Refer to the exhibit. An administrator is troubleshooting network issues on a customer's network PE1 cannot form an LDP relationship with PE2 using LDP ID 192.168.1.1. Due to this connectivity issue, the customer's routes behind both PE routers cannot be exchanged.

Which action must the administrator take to correct the problem?

```

PE1#show mpls ldp discovery
Local LDP Identifier:
  192.168.12.1:0
Discovery Sources:
Interfaces:
  Gi1/0 (ldp): xmit/recv
LDP Id: 192.168.1.1:0; no route
  
```

- A. Create a targeted LDP session on PE2 to override the missing routing table entry on PE1.
- B. Enable LDP session protection on the link that P1 uses as the next hop to PE2.
- C. Configure PE2 to automatically select its own LDP router ID with 192.168.1.1.
- **D. Configure PE1 with a static route to 192.168.1.1.**

Answer: D

NEW QUESTION # 134

.....

Latest Test 300-510 Discount: <https://www.testsimulate.com/300-510-study-materials.html>

- Verified 300-510 Answers 300-510 Latest Test Materials 300-510 Popular Exams Easily obtain free download of 300-510 by searching on “ www.examdisscuss.com ” 300-510 Latest Study Materials
- Free Download Cisco New 300-510 Study Plan Are Leading Materials - Valid 300-510: Implementing Cisco Service Provider Advanced Routing Solutions Search for ➡ 300-510 and download it for free on www.pdfvce.com website Exam 300-510 Papers
- Test 300-510 Cram Review Exam 300-510 Dump 300-510 Exam Dumps Pdf Easily obtain free download of ➡ 300-510 by searching on ➡ www.prepawayete.com 300-510 New Real Exam
- 100% Pass Quiz 2026 Cisco High-quality New 300-510 Study Plan Enter ➡ www.pdfvce.com and search for 300-510 to download for free 300-510 New Real Exam
- Pass Guaranteed Quiz Reliable Cisco - New 300-510 Study Plan Search on > www.vceengine.com < for (300-510) to obtain exam materials for free download 300-510 Dumps Download
- 100% Pass Quiz 2026 Cisco 300-510: Implementing Cisco Service Provider Advanced Routing Solutions – High-quality New Study Plan Download ➡ 300-510 for free by simply searching on { www.pdfvce.com } Exam 300-510 Dump
- Verified 300-510 Answers 300-510 Test King Test 300-510 Cram Review Open { www.troytecdumps.com } and search for 《 300-510 》 to download exam materials for free Verified 300-510 Answers

