

Guaranteed 300-420 Questions Answers & Exam 300-420 Revision Plan



P.S. Free & New 300-420 dumps are available on Google Drive shared by Dumpleader: https://drive.google.com/open?id=1vOlkrHf7wMXeaNC_fDMJrGMI-cBytYIP

The goal of 300-420 exam torrent is to help users pass the exam with the shortest possible time and effort. With 300-420 exam torrent, you neither need to keep yourself locked up in the library for a long time nor give up a rare vacation to review. You will never be frustrated by the fact that you can't solve a problem. With 300-420 question torrent, you will suddenly find the joy of learning and you will pass the professional qualification exam very easily.

Cisco 300-420 exam tests a candidate's knowledge in various areas, including advanced addressing and routing solutions, infrastructure services, network assurance, security services, and virtualization. 300-420 Exam is intended for network designers, network engineers, and network architects who have a solid understanding of Cisco's enterprise networking technologies and solutions.

>> **Guaranteed 300-420 Questions Answers** <<

2026 100% Free 300-420 –Perfect 100% Free Guaranteed Questions Answers | Exam Designing Cisco Enterprise Networks Revision Plan

You will earn the Cisco 300-420 certification on the first try if you use 300-420 Questions. Our high-quality Cisco 300-420

practice questions preparation material in three formats will help you crack the Cisco 300-420 Exam in one go. For the Cisco 300-420 exam dumps, we offer Cisco 300-420 PDF questions, desktop 300-420 practice test software, and web-based 300-420 practice exam software.

To pass the Cisco 300-420 exam, candidates need to have a solid understanding of network design principles, network protocols, and Cisco technologies. They also need to have hands-on experience in designing and implementing enterprise networks using Cisco technologies. 300-420 exam consists of multiple-choice questions, drag-and-drop questions, and simulations, and candidates have 90 minutes to complete it. With the Cisco 300-420 certification, network professionals can demonstrate their expertise in designing and implementing enterprise-level networks using Cisco technologies, which can open up new career opportunities and increase their earning potential.

Cisco 300-420 Exam, also known as Designing Cisco Enterprise Networks, is a certification exam that is designed for professionals who work with enterprise networks. 300-420 exam is aimed at testing the knowledge and skills of the candidates in planning, designing, and implementing enterprise-level networks using Cisco technologies. 300-420 exam is part of the CCNP Enterprise certification track and is one of the core exams required to earn this certification.

Cisco Designing Cisco Enterprise Networks Sample Questions (Q36-Q41):

NEW QUESTION # 36

A company with multiple service providers wants to speed up BGP convergence time in the event a failure occurs with their primary link. Which approach achieves this goal and does not impact router CPU utilization?

- A. Utilize BFD and keep the default BGP timers
- B. Utilize BFD and tune the multiplier to 50
- C. Decrease the BGP keepalive timer
- D. Lower the BGP hello interval

Answer: A

Explanation:

BFD with default BGP timers is the best design choice because it improves failure detection without forcing BGP itself to run aggressive keepalive processing. Cisco documentation describes BFD as providing fast forwarding-path failure detection and notes that BFD can be less CPU-intensive than reduced EIGRP, BGP, and OSPF timers because parts of BFD can be distributed to the data plane. Lowering BGP keepalive and hold timers makes the BGP process detect failure sooner, but it increases control-plane activity and can create instability at scale. Tuning the BFD multiplier to an extreme value such as 50 is also counterproductive because it lengthens detection rather than improving it, depending on the interval used. The correct approach is to leave normal BGP timers in place and bind BGP neighbor fail-over to BFD. When the forwarding path fails, BFD notifies BGP quickly, allowing the route to be withdrawn and an alternate provider path to be selected faster without unnecessary BGP timer churn.

NEW QUESTION # 37

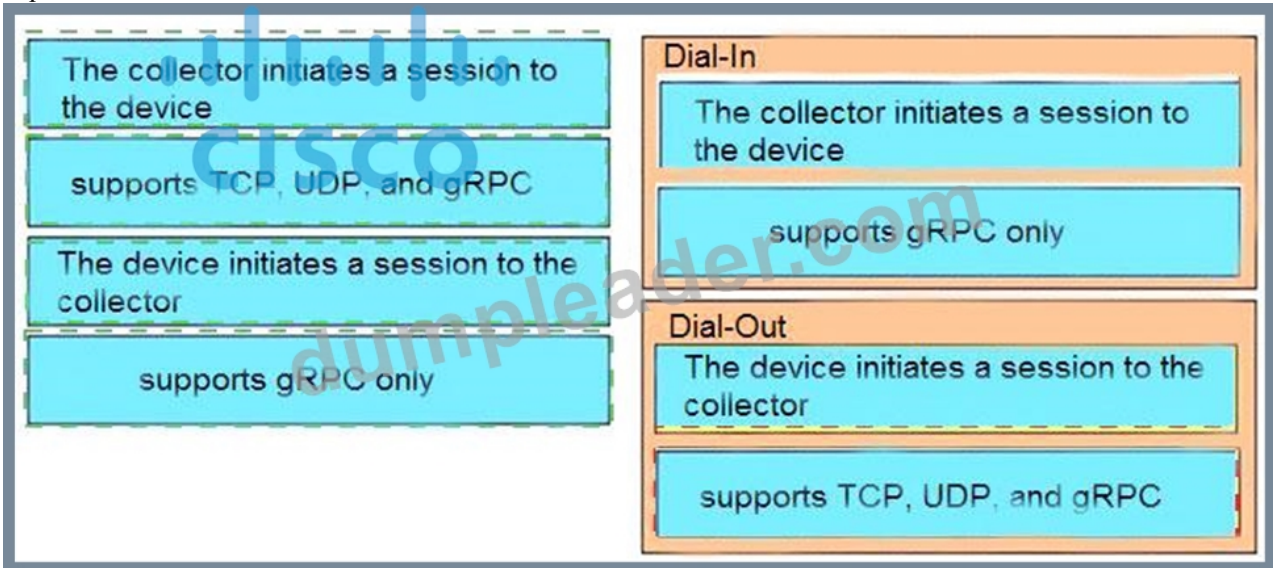
Drag and drop the characteristics from the left onto the correct telemetry mode on the right.

The collector initiates a session to the device	Dial-In
supports TCP, UDP, and gRPC	
The device initiates a session to the collector	Dial-Out
supports gRPC only	

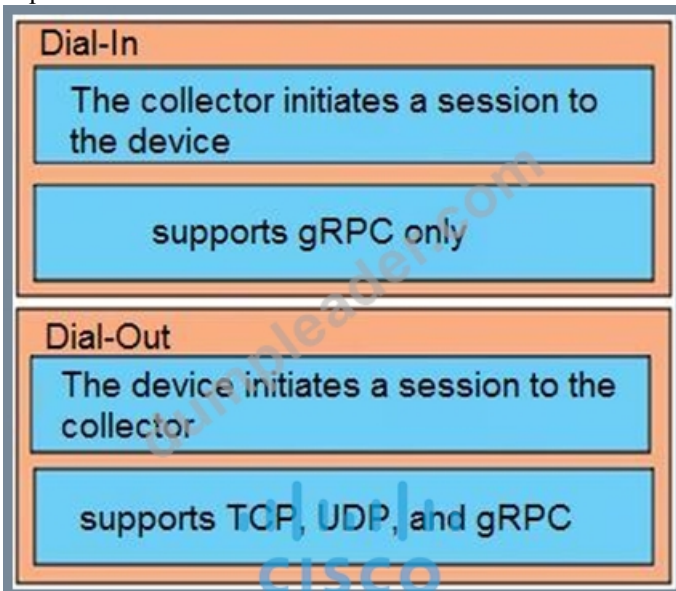
Note: The image contains a large watermark 'dumpleader.com' and a Cisco logo.

Answer:

Explanation:



Explanation



In a dial-in mode, the destination initiates a session to the router and subscribes to data to be streamed. Dialin mode is supported over gRPC in only 64-bit platforms In a dial-out mode, the router initiates a session to the destinations based on the subscription. All 64-bit IOS XR platforms (except for NCS 6000 series routers) support gRPC and TCP protocols. All 32-bit IOS XR platforms support only TCP.

NEW QUESTION # 38

Refer to the exhibit.

```

class MISSION-CRITICAL
  bandwidth percent 26
  random-detect dscp-based
class BULK
  bandwidth percent 5
  random-detect dscp-based
class SCAVENGER
  bandwidth percent 1
class class-default
  bandwidth percent 24
  random-detect
!
class-map match-all BULK
  match ip dscp af11 af12
class-map match-all VIDEO
  match ip dscp af41 af42
class-map match-any ROUTING
  match ip dscp cs6
class-map match-all MISSION-CRITICAL
  match ip dscp af21 af22
class-map match-any SIGNALLING
  match ip dscp cs3
  match ip dscp af31
class-map match-all VOICE
  match ip dscp ef
class-map match-all SCAVENGER
  match ip dscp cs1
!
interface GigabitEthernet0/2
  description Link_to_DC
  service-policy output WAN-DC-LINK

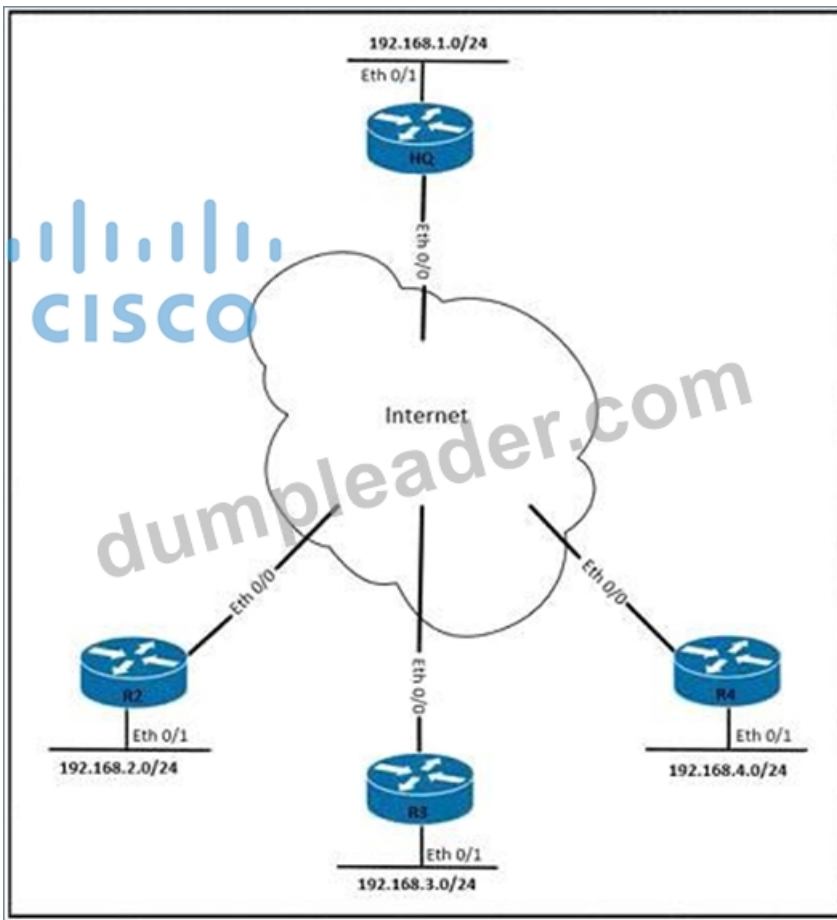
```

Refer to the exhibit. A customer needs to apply QoS to the network management traffic passing through the GigabitEthernet0/2 interface. All eight queuing classes are in use, so the new requirement must be integrated into the existing policy. Which solution must the customer choose?

- A. Mark traffic to DSCP CS5 and assign it to the SIGNALLING class. Then, baseline existing queue sizes to determine if additional bandwidth can be provisioned to the SIGNALLING class.
- B. Mark the traffic to DSCP CS6 and assign it to the ROUTING class. Then, prioritize traffic within the class.
- C. Mark the traffic to DSCP CS4 and assign it to the SIGNALLING class. Then, prioritize traffic within the class.
- D. Mark the traffic to DSCP CS2 and assign it to the ROUTING class. Then, baseline existing queue sizes to determine if additional bandwidth can be provisioned to the ROUTING class.

Answer: D

NEW QUESTION # 39

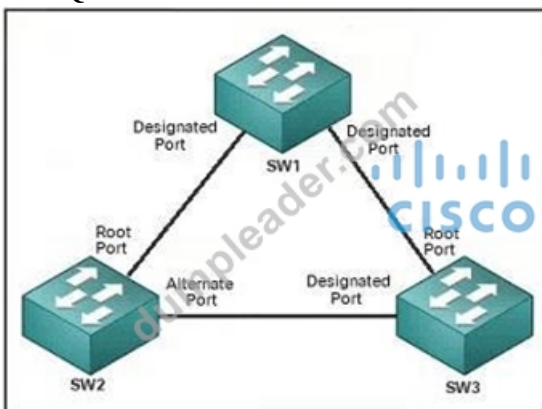


Refer to the exhibit A customer wants to adopt a dynamic site-to-site VPN solution to secure communication for VoIP, video, and FTP traffic between the remote branches and the headquarters. The customer also wants the branches to communicate directly, thereby reducing traffic at the headquarters location. The solution must consider that the branch routers are limited in available memory. Which VPN solution meets these requirements?

- A. DMVPN Phase 3 Hierarchical design
- B. DMVPN Phase 2 Hub and Spoke design
- C. DMVPN Phase 3 Hub and Spoke design
- D. DMVPN Phase 1 Hub and Spoke design

Answer: C

NEW QUESTION # 40



Refer to the exhibit. The connection between SW2 and SW3 is fiber and occasionally experiences unidirectional link failure. An architect must optimize the network to reduce the change of layer2 forwarding loops when the link fails. Which solution should the architect include?

- A. Utilize loop guard on SW2

- B. Utilize BPDU guard on SW1
- C. Utilize BPDU filter on SW3.
- D. Utilize root guard on SW1.

Answer: A

Explanation:

Loop guard should be used on SW2 to reduce the chance of Layer 2 forwarding loops caused by a unidirectional fiber failure. In spanning-tree operation, a root or alternate port expects to receive BPDUs from the designated bridge. If BPDUs stop arriving because the fiber becomes unidirectional, the port may incorrectly assume that the path is no longer receiving a superior BPDU and transition toward forwarding.

Cisco loop guard prevents this by moving the port into a loop-inconsistent state when BPDUs are unexpectedly lost on a non-designated port. That behavior protects the topology from a port role change that could create a Layer 2 loop. BPDU filter is dangerous in this context because it can suppress BPDUs and hide the control-plane signal STP needs. BPDU guard is mainly for PortFast edge ports that should never receive BPDUs. Root guard prevents superior BPDUs from changing root placement, but it does not address unidirectional loss of expected BPDUs. Therefore, loop guard on SW2 is the proper design control. Reference topics: STP loop guard, unidirectional fiber failure, BPDU loss, loop-inconsistent state, Layer 2 resiliency.

NEW QUESTION # 41

.....

Exam 300-420 Revision Plan: https://www.dumpleader.com/300-420_exam.html

- Reliable 300-420 Exam Cram 300-420 Latest Exam Notes 300-420 Reliable Exam Braindumps Copy URL www.examcollectionpass.com open and search for 300-420 to download for free 300-420 Test Questions Fee
- 300-420 Certification Sample Questions New 300-420 Test Notes Accurate 300-420 Answers Copy URL www.pdfvce.com open and search for { 300-420 } to download for free Related 300-420 Certifications
- Hot Guaranteed 300-420 Questions Answers - How to Prepare for Cisco 300-420 Exam Easily obtain ⇒ 300-420 ⇐ for free download through [www.pass4test.com] Reliable 300-420 Exam Cram
- Pass Guaranteed 2026 Newest 300-420: Guaranteed Designing Cisco Enterprise Networks Questions Answers Search for 300-420 and easily obtain a free download on www.pdfvce.com Reliable 300-420 Exam Cram
- Free PDF Quiz 2026 300-420: Professional Guaranteed Designing Cisco Enterprise Networks Questions Answers The page for free download of ✓ 300-420 on “ www.examcollectionpass.com ” will open immediately Accurate 300-420 Answers
- Guaranteed 300-420 Questions Answers | Accurate Designing Cisco Enterprise Networks 100% Free Exam Revision Plan Open www.pdfvce.com and search for 300-420 to download exam materials for free Printable 300-420 PDF
- New 300-420 Test Blueprint 300-420 Test Objectives Pdf 300-420 Test Questions Fee Search for { 300-420 } and obtain a free download on [www.examcollectionpass.com] 300-420 Certification Sample Questions
- Quiz 2026 Cisco 300-420 – Reliable Guaranteed Questions Answers Download ✓ 300-420 for free by simply entering www.pdfvce.com website 300-420 Latest Exam Simulator
- High Pass-Rate Guaranteed 300-420 Questions Answers | Easy To Study and Pass Exam at first attempt - Excellent Cisco Designing Cisco Enterprise Networks Open ✓ www.prepawayete.com enter 300-420 and obtain a free download 300-420 Latest Exam Notes
- Authoritative Guaranteed 300-420 Questions Answers Covers the Entire Syllabus of 300-420 Search for 300-420 and obtain a free download on www.pdfvce.com Related 300-420 Certifications
- 300-420 Reliable Exam Braindumps 300-420 Pass Test Printable 300-420 PDF Search for 《 300-420 》 and download it for free on www.prepawayexam.com website 300-420 Latest Exam Notes
- chiaraujkj685265.elbloglibre.com, funny-lists.com, top10bookmark.com, fellowfavorite.com, alvinieai774844.gynoblog.com, nimmansocial.com, www.stes.tyc.edu.tw, honeymnfp294708.dailyblogzz.com, theogvwp905508.anchor-blog.com, bookmarkssystem.com, Disposable vapes

BONUS!!! Download part of Dumpleader 300-420 dumps for free: https://drive.google.com/open?id=1vOlkrHf7wMXeaNC_fDMJrGML-cBytYIP