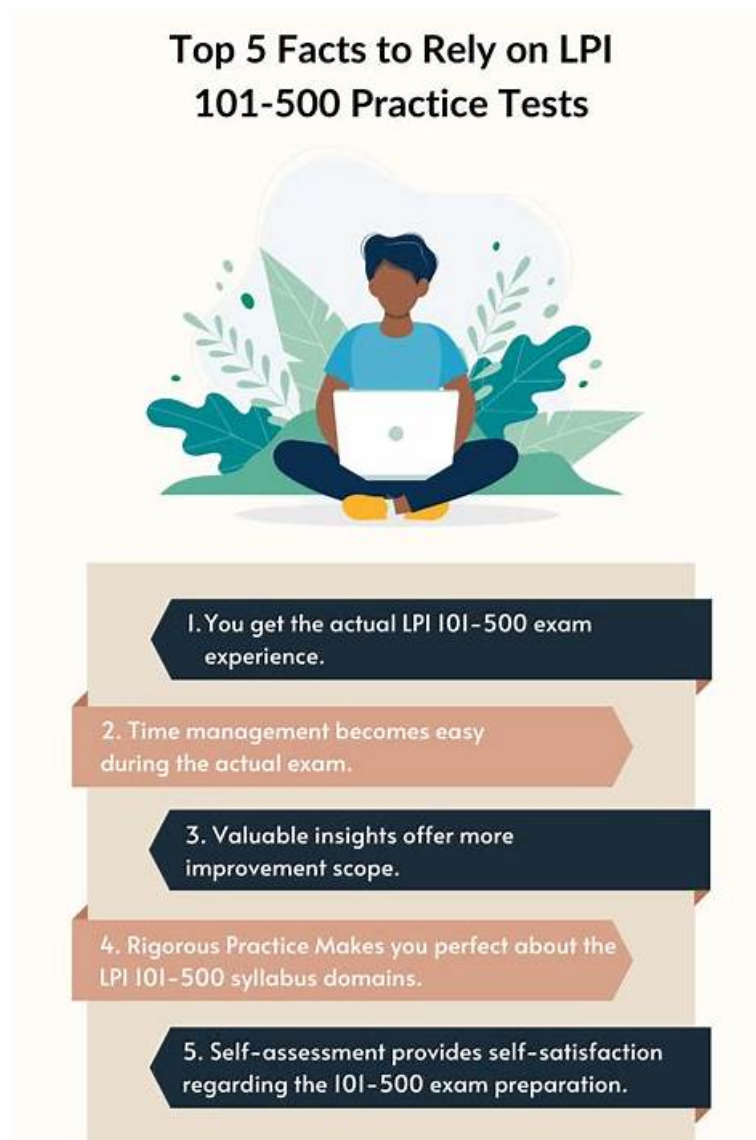


Detailed 101-500 Study Plan - 101-500 Sample Exam



2026 Latest Real4Prep 101-500 PDF Dumps and 101-500 Exam Engine Free Share: https://drive.google.com/open?id=1QJY08vmX54jj437PMPddkjD5FOD__0Jh

Our experts have worked hard for several years to formulate 101-500 exam braindumps for all examiners. Our 101-500 study materials not only target but also cover all knowledge points. And our practice materials also have a statistical analysis function to help you find out the deficiency in the learning process of 101-500 practice materials, so that you can strengthen the training for weak links. In this way, you can more confident for your success since you have improved your ability.

How much LPIC-1 Linux Administrator , 101-500 Exam Cost

The price of the LPIC-1 Linux Administrator , 101-500 Exam Fee is \$200 USD.

>> Detailed 101-500 Study Plan <<

101-500 Sample Exam, 101-500 Exam Discount

Our 101-500 exam questions can meet your needs to the maximum extent, and our 101-500 learning materials are designed to the greatest extent from the customer's point of view. So you don't have to worry about the operational complexity. As soon as you

enter the learning interface of our system and start practicing our 101-500 Learning Materials on our Windows software, you will find small buttons on the interface. These buttons show answers, and you can choose to hide answers during your learning of our 101-500 exam quiz so as not to interfere with your learning process. Every aspect is perfect.

The LPIC-1 certification is suitable for IT professionals who are interested in pursuing a career in Linux system administration. It is also ideal for individuals who want to validate their skills and knowledge of Linux. LPIC-1 Exam 101, Part 1 of 2, version 5.0 certification is recognized by companies and organizations worldwide, which makes it a valuable asset for IT professionals who want to enhance their career prospects.

Lpi LPIC-1 Exam 101, Part 1 of 2, version 5.0 Sample Questions (Q268-Q273):

NEW QUESTION # 268

Which of these commands allows you to use shared libraries that are in /usr/local/lib?

- A. export LD_PRELOAD=/usr/local/lib
- B. ldconfig /usr/local/lib
- C. ldd /usr/local/lib
- D. export LD_LIBRARY_PATH=/usr/local/lib

Answer: B

NEW QUESTION # 269

Given the following input stream:

txt1.txt

atxt.txt

txtB.txt

Which of the following regular expressions turns this input stream into the following output stream?

txt1.bak.txt

atxt.bak.txt

txtB.bak.txt

- A. s/txt/bak.txt/
- B. s/

P.S. Free & New 101-500 dumps are available on Google Drive shared by Real4Prep: https://drive.google.com/open?id=1QJY08vmX54jj437PMPddkjD5FOD__0Jh