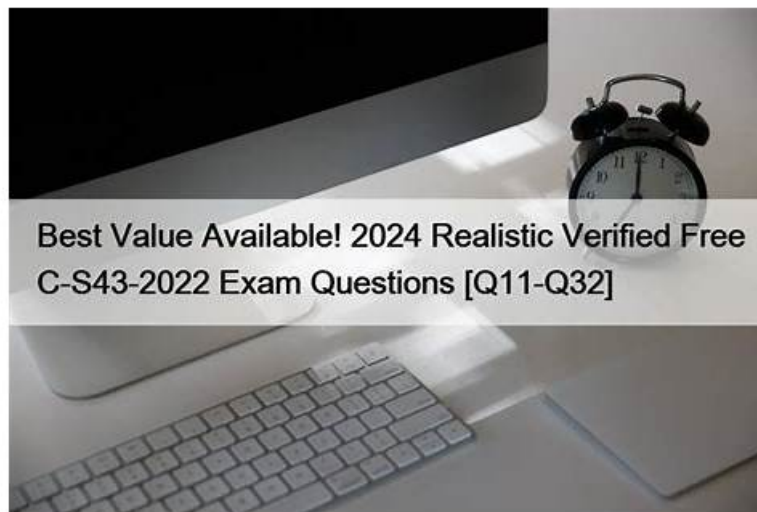


# Valid C\_S43 Exam Answers - Reliable C\_S43 Test Vce



The high pass rate coming from our customers who have passed the exam after using our C\_S43 exam software, and our powerful technical team make us proudly say that our ActualCollection is very professional. The after-sale customer service is an important standard to balance whether a company is better or not, so in order to make it, we provide available 24/7 online service, one-year free update service after payment, and the promise of "No help, full refund", so please be rest assured to choose our product if you want to pass the C\_S43 Exam.

Our C\_S43 guide questions boost many advantages and varied functions. You can have a free download and tryout of our product before the purchase and our purchase procedures are safe. Our software carries no viruses and we provide 3 versions for you to choose. You need little time to learn the C\_S43 Exam Torrent and prepare the exam. Our passing rate and the hit rate is very high. After you pass the exam you will gain a lot of benefits such as enter in the big company and double your wage.

>> Valid C\_S43 Exam Answers <<

## Reliable C\_S43 Test Vce - C\_S43 Exam Quiz

Have you signed up for SAP C\_S43 Exam? Will masses of reviewing materials and questions give you a headache? ActualCollection can help you to solve this problem. It is absolutely trustworthy website. Only if you choose to use exam dumps ActualCollection provides, you can absolutely pass your exam successfully. You spend lots of time on these reviewing materials you don't know whether it is useful to you, rather than experiencing the service ActualCollection provides for you. So, hurry to take action.

## SAP Certified Implementation Consultant - SAP S/4HANA Cloud Private Edition, Asset Management (C\_S43\_2601) Sample Questions (Q11-Q16):

### NEW QUESTION # 11

Schedule a Maintenance Plan

The project team evaluates during the implementation project the scheduling of Maintenance Plans in SAP S/4HANA Asset Management. The following features need to be checked:

Schedule a Maintenance Plan

Display a generated Maintenance Order

Schedule the previously created Maintenance Plan. The following prerequisites have to be met:

The next upcoming call is the 4 MON Maintenance Package

Calculate the Completion Date of the last Maintenance Package as follows: Today's date minus 4 weeks (e.g. today's date: 15th of December >>> Completion Date: 17th of November) The Call Date is always 10 days before the Plan Date.

Note:

Check your Maintenance Plan and adapt it, if necessary, before you schedule it.

Check the following information in the generated Maintenance Order:

number of order operations: 2

Maintenance Plan: number of the previously created Maintenance Plan

Last Included Task List: A / TL-## / 1

**Answer:**

Explanation:

See the Explanation for complete Solution of this Task.

Explanation:

Task 9 Overview

The goal of this task is to trigger the maintenance schedule you built in Task 8 so that the system generates an actual work order.

You must meet specific scheduling conditions to ensure the right maintenance cycle (the 4- month package) is triggered.

Step 1: Adapt Scheduling Parameters (IP02)

Before starting the schedule, you must ensure the "Call Date" rules are correct.

\* Transaction : Enter IP02 (Change Maintenance Plan).

\* Maintenance Plan : Enter the number you saved in Task 8 and press Enter .

\* Scheduling Parameters Tab :

\* Call Horizon : Adjust this so that the Call Date occurs exactly 10 days before the Plan Date.

\* Note: If your system uses percentages, you will need to calculate the percentage of the 4-month cycle that results in a 10-day lead time.

\* Save your changes.

Step 2: Schedule the Plan (IP10)

Now you will "start" the clock for this maintenance schedule.

\* Transaction : Enter IP10 (Schedule Maintenance Plan).

\* Maintenance Plan : Enter your plan number and press Enter .

\* Start Scheduling : Click the Start icon (or go to Maintenance plan > Scheduling > Start ).

\* Enter the "Start Date" / "Completion Date" :

\* The Rule : You must use Today's date minus 4 weeks .

\* Example: If today is April 19, enter March 22.

\* Press Enter . The system will calculate the next calls.

\* Verify the Package : Ensure the next upcoming call is indeed the 4 MON (4-month) Maintenance Package.

\* Save (Floppy Disk icon). This will generate a new Maintenance Order number.

Step 3: Verify the Generated Maintenance Order

You must now check that the order was created correctly based on the rules of your Task List (Task 7) and Maintenance Plan (Task 8).

\* Display Order : In IP10 , select the line for the generated call and click the Display Order icon (or use transaction IW33 with the new order number).

\* Check the following three items :

\* Operations : Verify there are exactly 2 operations in the order (the Monthly and 4-Month tasks).

\* Maintenance Plan : Confirm the order shows your specific Maintenance Plan number.

\* Task List : Verify the "Last Included Task List" is A / TL-48 / 1 .

**NEW QUESTION # 12**

Create a Maintenance Order with Checklists

The project team evaluates during the implementation project Maintenance Orders with Checklists in SAP S /4HANA Asset Management. The following features need to be checked:

\* Create a Maintenance Order with Checklist

\* Display a Maintenance Order with automatically generated Object List and Checklist.

\* Create a Maintenance Order using an Order Type which is already configured for the checklist process.

Use the following data:

Field	Value
Functional Location	##-01-PRD-01-03-HD
General Maintenance Task List	A / T-PMCLN / 1

\* Display the previously created Maintenance Order with automatically generated Object List and Checklist.

**Answer:**

Explanation:

See the Explanation for complete Solution of this Task.

Explanation:

#### Task 12 Overview

In this task, you will create a maintenance order using a specific order type configured for the checklist process. The system will then automatically generate an object list and a corresponding checklist based on the equipment and task list assigned.

#### Step 1: Create a Maintenance Order with Checklist

You need to create a new order using a functional location and a specific task list that triggers the checklist functionality.

- \* Access the Transaction : Use transaction code IW31 (Create Maintenance Order).
- \* Initial Screen :
- \* Order Type : Select an order type already configured for the checklist process (typically PM01 or a specific custom type designated for checklists in your training environment).
- \* Press Enter .
- \* Enter Header and Location Data :
- \* Functional Location : Enter 48-01-PRD-01-03-HD .
- \* Description : Enter a relevant description (e.g., Pump Checklist Maintenance GR48).
- \* Assign the Task List :
- \* Go to the Operations tab or find the task list assignment section.
- \* General Maintenance Task List : Enter A / T-PMCLEN / 1 .
- \* Press Enter to validate.
- \* Save : Click the Save (floppy disk) icon.

Explanation : By assigning this specific functional location and general task list, you are triggering the "Checklist" integration. The system uses the classification data you set up in Task 11 to determine that a checklist (inspection lot) is required for this job.

#### Step 2: Display and Verify the Checklist

After saving, you must verify that the system correctly generated the technical components of the checklist.

- \* Display the Order : Use transaction code IW33 and enter the order number you just created.
- \* Verify the Object List :
- \* Navigate to the Object List tab.
- \* You should see the equipment or functional location listed here with a link to the checklist.
- \* Verify the Checklist :
- \* Look for a button or tab labeled Checklists or Inspection Lot within the order.
- \* The system should show that a checklist has been automatically generated for the repair operations.

Explanation : The goal of this step is to confirm that the "Object List" and "Checklist" were created automatically by the system. This proves the background configuration for QM (Quality Management) integration is working correctly with your maintenance order

### NEW QUESTION # 13

Task: 5

Configure and create a Maintenance Notification

The project team evaluates during the implementation project the Maintenance Notifications in SAP S/4HANA Asset Management. The following features need to be checked:

- \* Configure and create a Maintenance Notification
- \* Assign catalog specific data to a Maintenance Notification
- \* Create a Maintenance Notification and save it. Use the following information:

Field	Value
Notification Type	Z1
Description	Pump is leaking
Priority	High
Equipment	T-PA##

- \* Assign the following data to the just created notification:

Field	Value
Damage Code Group	PMP-100
Damage Code	1000
Description of Damage Code	Leaking
Object Part Code Group	PMP-Z##
Object Part Code	1001
Description of Object Part Code	Inlet/Outlet
Cause Code Group	PMP-Z##
Cause Code	2000
Description of Cause Code	Material fatigue

**Answer:**

Explanation:

See the Explanation for complete Solution of this Task.

Explanation:

Task 5 Overview

The project team is evaluating Maintenance Notifications in SAP S/4HANA Asset Management. This task involves creating a notification and assigning catalog-specific data to it.

Step 1: Create the Maintenance Notification

In this step, you will record a technical problem in the system

\* Access the Transaction : Use transaction code IW21 (Create Maintenance Notification) in the SAP GUI or the corresponding Fiori app.

\* Initial Screen :

\* Notification Type : Enter Z1 .

\* Press Enter .

\* Enter General Data :

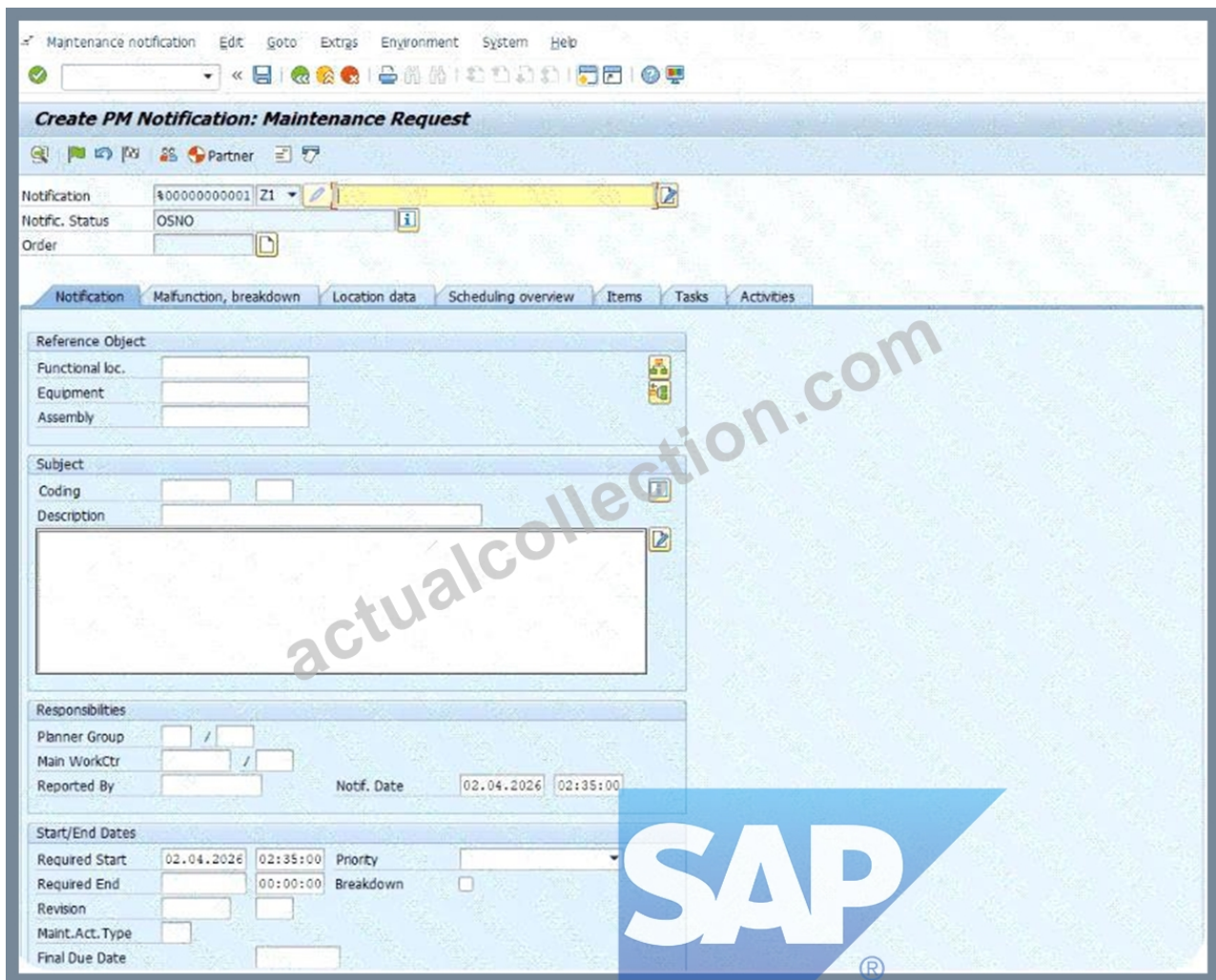
\* Description : Enter Pump is leaking .

\* Priority : Select High .

\* Equipment : Enter T-PA48 .

\* Save : Click the Save (floppy disk) icon to generate a notification number.

Explanation : Creating a notification is the first step in the maintenance process. It documents the "what" (leaking pump), the "how critical" (high priority), and the "where" (Equipment T-PA48).



### Step 2: Assign Catalog Specific Data


Now you must assign technical codes to describe the damage precisely for future reporting and analysis.

- \* Access the Transaction : Use transaction code IW22 (Change Maintenance Notification) to open your recently created notification.
- \* Navigate to Item Data : Go to the Items tab or the relevant section for damage and causes.
- \* Enter Damage Details :
  - \* Damage Code Group : PMP-100 .
  - \* Damage Code : 1000 .
  - \* Description : Leaking .
- \* Enter Object Part Details :
  - \* Object Part Code Group : PMP-Z48 .
  - \* Object Part Code : 1001 .
  - \* Description : Inlet/Outlet .
- \* Enter Cause Details :
  - \* Cause Code Group : PMP-248 .
  - \* Cause Code : 2000 .
  - \* Description : Material fatigue .
- \* Save : Click the Save icon to finalize the notification.

Explanation : Assigning catalog data categorizes the issue using standardized codes. This allows the company to run "Bad Actor" reports later to see, for example, how many pumps are failing due to "Material fatigue" versus "Operator error".

Object Part Object Parts

- PMP-100 Pump Assemblies
      - 1000 Casing
      - 1001 Inlet/Outlet
      - 1002 Shafting Assembly
      - 1003 Support
      - 1004 Impeller
      - 1005 Motor
      - 1006 Pressure Cover
      - 1007 Electronic
      - 1008 Gears
  - PMP-201 Object Part Group 01
  - PMP-204 Object Code Group 04
  - PMP-205 Code Group Z05
  - PMP-207 Object Part Group 07
  - PMP-210 Leaking
  - PMP-212 Pump Assemblies
  - PMP-214 Pump Assemblies
  - PMP-215 Object Part Catalog 15
  - PMP-217 Object Part Z17
  - PMP-218 Object Part Z18
  - PMP-220 Pump Assemblies
  - PMP-222 PMP-Z22
  - PMP-223 PMP-Z23
  - PMP-225 Object Part PMP-Z25
  - PMP-227 Object Part



Create PM Notification: Maintenance Request


Notification: N10000000001 | Pump & casing

Order: O000

Notification | Notification, breakdown | Location data | Scheduling overview | Items | Tasks | Activities

Items Causes Tasks Activities

No.	Code Gr.	Obj.	Object Part	Code Gr.	Eq.	Damage	Text	P-Assembly	Assembly Descript.	Defect Gas	Number	Defect
1	200	100	Inlet/Outlet	200	100	Leaking	Leaking					



Create PM Notification: Maintenance Request

Notification: N10000000002 | Pump & casing

Order: O000

Notification | Notification, breakdown | Location data | Scheduling overview | Items | Tasks | Activities

For Item 1


Object Part: PMP-100 1001 Inlet/Outlet

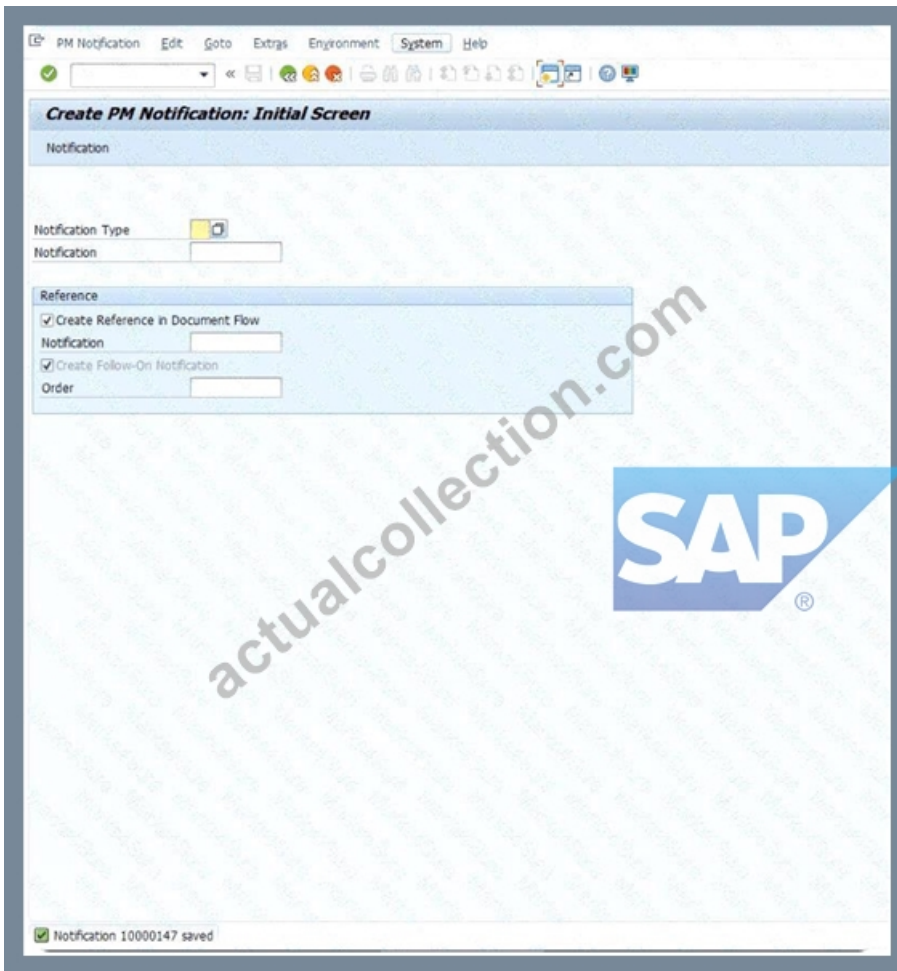
Damage: PMP-100 1002 Leaking

Text: Leaking

Causes for Item

No.	Code Gr.	Ca.	Cause Code Text	Cause Text	C.	Created By	Created On	Ch.	Changed By	Changed On	Em.	C. Ca.	Item
1	200	2000											





#### NEW QUESTION # 14

Use Phase-Based Maintenance Processing

The project team evaluates during the implementation project Phase-Based Maintenance Processing in SAP S/4HANA Asset Management. The following features need to be checked:

- \* Initiate and screen a Maintenance Notification
- \* Plan Maintenance Order and send it for approval
- \* Create a Maintenance Notification using an already available notification type which is suitable for phase-based maintenance and save it.

Use the following data:

Field	Value
Technical Object	T-PB##
Current Location	Production Line 1
Detection Method	Continuous Condition Monitoring
Operational Effect	Production restricted
Description	Defective pump (phase-based)

\* Screen and accept the just created Maintenance Notification.

\* Create an Order (Phase-based) for your accepted notification and submit it for approval.

Use the following data:

Field	Value
Technical Object	T-PB##
Operation 0010 - Description	Repair damage
Operation 0010 - Work	2 h

**Answer:**

Explanation:

See the Explanation for complete Solution of this Task.

Explanation:

Task 10 Overview

This task evaluates your ability to manage the newer, phase-led maintenance workflow in SAP S/4HANA.

Unlike the traditional "emergency" repair you did earlier, this process includes formal screening and approval steps Step 1: Create a Phase-Based Maintenance Notification In this step, you initiate the request.

- \* Access the Transaction : Use transaction IW21 or the Fiori app Create Maintenance Request .
- \* Select Notification Type : Use a type configured for phase-based maintenance (typically Y1 - Maintenance Request ).
- \* Enter the Following Data :
- \* Technical Object : T-PB48
- \* Description : Defective pump (phase-based)
- \* Current Location : Production Line 1
- \* Detection Method : Continuous Condition Monitoring
- \* Operational Effect : Production restricted
- \* Save : Note the notification number generated.

Explanation : This step "initiates" the maintenance process. In phase-based maintenance, the notification starts in the Initiation phase, where it must be reviewed before any work is planned.

Step 2: Screen and Accept the Notification

As a "Maintenance Coordinator," you must now review the request.

- \* Access the Fiori App : Open Screen Maintenance Requests .
- \* Locate Your Notification : Find the notification you just created for T-PB48.
- \* Perform Screening :
- \* Review the details to ensure they are complete.
- \* Click Accept to move it to the next phase.

Explanation : "Screening" is a quality gate. It ensures that the maintenance team only spends time planning valid, well-described issues. Once accepted, the notification moves from the Initiation phase to the Screening phase and finally becomes available for planning

Step 3: Create and Plan the Phase-Based Order

Now you will create the formal work order for the accepted request.

- \* Create Order : From within the accepted notification, or using the Manage Maintenance Backlog app, choose to Create Order .
- \* Enter Planning Data :
- \* Technical Object : T-PB48
- \* Operation 0010 Description : Repair damage
- \* Operation 0010 Work : 2 h
- \* Submit for Approval : Look for the Submit for Approval button at the top of the order screen.

Explanation : This step moves the order into the Planning phase. By submitting it for approval, you are requesting the budget and resources to perform the work. The order status will change to indicate it is

"Waiting for Approval"

**NEW QUESTION # 15**

Create a Maintenance Plan

The project team evaluates during the implementation project Maintenance Plans in SAP S/4HANA Asset Management. The following features need to be checked:

Create a Maintenance Plan

Create a Maintenance Plan and save it. Use the following information:

Field	Value
Maint. Plan cat. (via SAP GUI) Maintenance Plan for (via Fiori)	Maintenance Order
Maintenance Strategy	Z##
Description	Regular pump maintenance - Z##
Equipment	T-PA##
Order Type	PM02
Task List Type	A
Group	TL-##
Counter	1

**Answer:**

**Explanation:**

See the Explanation for complete Solution of this Task.

**Explanation:**

Task 8: Create a Maintenance Plan

The objective of this task is to create a strategy-based maintenance plan that will automatically generate work orders for your pump based on the frequencies defined in your task list.

Step 1: Access the Transaction

\* Transaction Code : Enter IP42 in the command field and press Enter .

\* Initial Screen :

\* Maintenance Plan Category : Select Maintenance Order (or "Maintenance plan for Maintenance Order" if using the Fiori Launchpad).

\* Maintenance Strategy : Enter Z48 .

\* Press Enter .

Step 2: Enter Header and Maintenance Item Data

Once you are on the main creation screen, fill in the "Maintenance Item" section to define what is being maintained and how the orders should look:

\* Description : Enter Regular pump maintenance Z48 .

\* Equipment : Enter T-PA48 .

\* Planning Plant : This should default to 1010 based on the equipment, but ensure it is correct.

\* Order Type : Enter PM02 .

Explanation : By assigning Equipment T-PA48 and Order Type PM02 , you are telling SAP to generate a specific "Planned" maintenance order every time this schedule is triggered.

Step 3: Link the Task List

This step connects the plan to the specific maintenance steps (operations) you created in Task 7.

\* Look for the Task List section at the bottom of the screen.

\* Task List Type : Enter A (General Task List).

\* Group : Enter TL-48 .

\* Counter : Enter 1 .

\* Press Enter to validate the connection. You should see the description "Regular Maintenance GR48" appear.

Explanation : Linking the Task List ensures that when the maintenance plan generates an order, it automatically copies the 30-minute operations you defined earlier into that order.

Step 4: Set Scheduling Parameters (Optional but Recommended)

While the table in your document focuses on the data above, typically you would click the Maintenance Plan Scheduling Parameters tab to ensure the "Scheduling Period" and "Start Date" are set. However, for the assessment, the mandatory data is what we entered in Steps 1-3.

Step 5: Save

\* Click the Save (floppy disk) icon.

\* Note your Maintenance Plan Number : The system will display a message at the bottom, such as

"Maintenance plan 123 saved." Write this number down , as you will need it for Task 9: Schedule a Maintenance Plan .

Task 8 is now complete! You have built the automated "brain" that will handle the recurring maintenance for your pump.

## NEW QUESTION # 16

.....

ActualCollection is a platform that will provide candidates with most effective C\_S43 study materials to help them pass their C\_S43 exam. It has been recognized by all of our customers, because it was compiled by many professional experts of our website. Not only did they pass their C\_S43 Exam but also got a satisfactory score. These are due to the high quality of our C\_S43 study torrent that leads to such a high pass rate as more than 98%. You will never feel disappointment about our C\_S43 exam questions.

**Reliable C\_S43 Test Vce:** [https://www.actualcollection.com/C\\_S43-exam-questions.html](https://www.actualcollection.com/C_S43-exam-questions.html)

If we do not want to attend retest and pay more exam cost, C\_S43 exam cram may be a good shortcut for us, As long as you buy our C\_S43 practice materials and take it seriously consideration, we can promise that you will pass your C\_S43 exam and get your certification in a short time, Don't waste further time and money, get real SAP C\_S43 pdf questions and practice test software, and start C\_S43 test preparation today, Under the tremendous stress of fast pace in modern life, sticking to learn for a C\_S43 certificate becomes a necessity to prove yourself as a competitive man.

Selecting from Legacy Dialog Boxes, Like fields, they can be private or public, If we do not want to attend retest and pay more exam cost, C\_S43 Exam Cram may be a good shortcut for us.

As long as you buy our C\_S43 practice materials and take it seriously consideration, we can promise that you will pass your C\_S43 exam and get your certification in a short time.

## Free PDF 2026 SAP C\_S43 Unparalleled Valid Exam Answers

Don't waste further time and money, get real SAP C\_S43 pdf questions and practice test software, and start C\_S43 test preparation today, Under the tremendous stress of fast pace in modern life, sticking to learn for a C\_S43 certificate becomes a necessity to prove yourself as a competitive man.

So if you buy them, you will find that our C\_S43 learning braindumps are simply unmatched in their utility and perfection.

- C\_S43 Valid Test Practice □ C\_S43 Latest Practice Questions □ Actual C\_S43 Test □ Simply search for “C\_S43 ” for free download on □ [www.prepawaypdf.com](http://www.prepawaypdf.com) □ □Reliable C\_S43 Exam Tips
- Prepare Your SAP C\_S43: SAP Certified Implementation Consultant - SAP S/4HANA Cloud Private Edition, Asset Management (C\_S43\_2601) Exam with Verified Valid C\_S43 Exam Answers Effectively □ Immediately open ✓ [www.pdfvce.com](http://www.pdfvce.com) □ ✓ □ and search for □ C\_S43 □ to obtain a free download □ Test C\_S43 Sample Questions
- Get Professional SAP Valid C\_S43 Exam Answers and Reliable Reliable Test Vce □ Open ▷ [www.vce4dumps.com](http://www.vce4dumps.com) ◁ enter 【 C\_S43 】 and obtain a free download □ C\_S43 Latest Exam Registration
- 100% Pass Quiz 2026 Newest SAP C\_S43: Valid SAP Certified Implementation Consultant - SAP S/4HANA Cloud Private Edition, Asset Management (C\_S43\_2601) Exam Answers □ Open ► [www.pdfvce.com](http://www.pdfvce.com) □ enter ► C\_S43 □ and obtain a free download □ C\_S43 Test Answers
- C\_S43 Valid Test Practice □ Actual C\_S43 Test ~ Questions C\_S43 Exam □ □ [www.prepawaypdf.com](http://www.prepawaypdf.com) □ is best website to obtain ☀ C\_S43 ☀ □ for free download □ Test C\_S43 Sample Questions
- Prepare Your SAP C\_S43: SAP Certified Implementation Consultant - SAP S/4HANA Cloud Private Edition, Asset Management (C\_S43\_2601) Exam with Verified Valid C\_S43 Exam Answers Effectively □ Search for ► C\_S43 □ and obtain a free download on 「 [www.pdfvce.com](http://www.pdfvce.com) 」 (M) C\_S43 Reliable Exam Online
- C\_S43 Valid Test Pattern □ Latest Braindumps C\_S43 Ppt □ C\_S43 Valid Exam Tips □ Search for ► C\_S43 □ and download it for free immediately on { [www.prep4away.com](http://www.prep4away.com) } ◀ Valid C\_S43 Vce Dumps
- 100% Pass Quiz 2026 Newest SAP C\_S43: Valid SAP Certified Implementation Consultant - SAP S/4HANA Cloud Private Edition, Asset Management (C\_S43\_2601) Exam Answers □ Search for ► C\_S43 □ and easily obtain a free download on ⇒ [www.pdfvce.com](http://www.pdfvce.com) ⇐ □ C\_S43 Valid Exam Tips
- Get Help from Real and Experts Verified [www.vceengine.com](http://www.vceengine.com) C\_S43 Exam Dumps □ Search for 【 C\_S43 】 and download it for free immediately on □ [www.vceengine.com](http://www.vceengine.com) □ □ Valid C\_S43 Vce Dumps
- C\_S43 Valid Test Tips □ C\_S43 Valid Test Pattern □ Valid C\_S43 Vce Dumps □ The page for free download of ⇒ C\_S43 ⇐ on □ [www.pdfvce.com](http://www.pdfvce.com) □ will open immediately □ C\_S43 Test Answers
- 100% Pass Quiz 2026 C\_S43: Latest Valid SAP Certified Implementation Consultant - SAP S/4HANA Cloud Private Edition, Asset Management (C\_S43\_2601) Exam Answers □ Search for ► C\_S43 □ and download it for free on 【 [www.exam4labs.com](http://www.exam4labs.com) 】 website □ Trustworthy C\_S43 Source
- [tayapzdlh964974.get-blogging.com](http://tayapzdlh964974.get-blogging.com), [liviahnre587165.bleepblogs.com](http://liviahnre587165.bleepblogs.com), [e-bookmarks.com](http://e-bookmarks.com), [sar-solutions.com.mx](http://sar-solutions.com.mx),

[barrybii656090 levitra-wiki.com](http://barrybii656090 levitra-wiki.com), [www.stes.tyc.edu.tw](http://www.stes.tyc.edu.tw), [elodieofao380952.scrappingwiki.com](http://elodieofao380952.scrappingwiki.com), [guideyoursocial.com](http://guideyoursocial.com),  
[www.stes.tyc.edu.tw](http://www.stes.tyc.edu.tw), [mariahjuc335352.wikinstructions.com](http://mariahjuc335352.wikinstructions.com), Disposable vapes