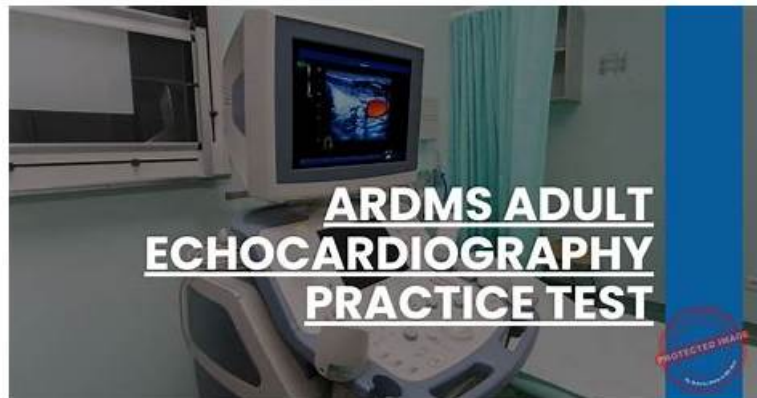


ARDMS AE-Adult-Echocardiography真題，AE-Adult-Echocardiography題庫分享



Fast2test是一家專業的網站，它給每位元考生提供優質的服務，包括售前服務和售後服務兩種，如果你需要我們Fast2test ARDMS的AE-Adult-Echocardiography考試培訓資料，你可以先使用我們的免費試用的部分考題及答案，看看適不適合你，這樣你可以親自檢查了我們Fast2test ARDMS的AE-Adult-Echocardiography考試培訓資料的品質，再決定購買使用。假如你很不幸的沒通過，我們將退還你購買的全部費用，並提供一年的免費更新，直到你通過為止。

ARDMS AE-Adult-Echocardiography 考試大綱：

主題	簡介
主題 1	<ul style="list-style-type: none">Instrumentation, Optimization, and Contrast: This section of the exam measures skills of adult echocardiography technicians related to use and optimization of ultrasound instrumentation and the application of contrast agents. Candidates should recognize imaging artifacts, utilize non-imaging transducers, and adjust ultrasound console settings for optimal imaging and Doppler recordings. Knowledge of harmonic imaging, principles of contrast agents, and the safe and effective use of saline and echo-enhancing contrast agents is essential. Candidates must also be able to optimize images when using contrast agents to ensure diagnostic quality.
主題 2	<ul style="list-style-type: none">Anatomy and Physiology: This section of the exam measures skills of adult echocardiography technicians and covers knowledge and abilities related to normal cardiac anatomy and physiology. It includes assessing great vessels like the aorta and pulmonary arteries, recognizing anatomic variants of the heart, and evaluating cardiac chambers, pericardium, valve structures, and vessels of arterial and venous return. Candidates must document normal systolic and diastolic function, normal valve function and measurements, the phases of the cardiac cycle, normal Doppler changes with respiration, and appearance of arterial and venous waveforms. This also involves assessing the normal hemodynamic response to stress testing and maneuvers such as Valsalva, respiratory, handgrip, and postural changes.
主題 3	<ul style="list-style-type: none">Pathology: This section of the exam measures skills of adult echocardiography technicians and focuses on identifying and evaluating abnormal physiology and perfusion and postoperative conditions. It includes assessment of ventricular aneurysms, aortic and valve abnormalities, arrhythmias, cardiac masses, diastolic dysfunction, endocarditis, ischemic diseases, cardiomyopathies, congenital anomalies, and postoperative valve repair or replacement and intracardiac devices. Candidates must demonstrate ability to recognize abnormal Doppler signals, EKG changes, wall motion abnormalities, and a wide range of cardiac pathologies including pulmonary hypertension and septal defects.

主題 4	<ul style="list-style-type: none"> • Measurement Techniques, Maneuvers, and Sonographic Views: This section of the exam measures skills of adult echocardiography technicians in performing accurate cardiac measurements, conducting provocative maneuvers, and obtaining optimized sonographic imaging views. It involves applying 2D, 3D, M-mode, and Doppler techniques to measure heart valves, chambers, and vessels, including the aortic valve, mitral valve, left and right ventricles, atria, pulmonary artery, and shunt ratios. Candidates must instruct patients in maneuvers such as Valsalva, cough, sniff, and squat. They should also be proficient in acquiring standard echocardiographic views including apical, parasternal, subcostal, and suprasternal notch views.
主題 5	<ul style="list-style-type: none"> • Clinical Care and Safety: This section of the exam measures skills of adult echocardiography technicians in applying clinical care principles and safety protocols. It includes evaluating patient history and external data, preparing patients including fasting state and intravenous line management, proper patient positioning, EKG lead placement, blood pressure measurement, and ergonomic techniques. Candidates are expected to identify critical echocardiographic findings, know contraindications for procedures, and be able to respond and manage medical emergencies that may arise during echocardiographic exams.

>> ARDMS AE-Adult-Echocardiography真題 <<

最受歡迎的AE-Adult-Echocardiography真題，免費下載AE-Adult-Echocardiography考試指南幫助妳通過AE-Adult-Echocardiography考試

AE-Adult-Echocardiography資格認證考試是非常熱門的一項考試，雖然很難通過，但是你只要找准了切入點，考試合格並不是什麼難題。Fast2test就是你最好的選擇。Fast2test命中率高達100%的資料，可以幫你解決AE-Adult-Echocardiography考試上的任何難題，只要你認真學習資料上的問題，相信一切難題都可以迎刃而解，你購買了考古題以後還可以得到一年的免費更新服務，一年之內，只要你想更新你擁有的資料，那麼你就可以得到最新版。快點來體驗一下吧。

最新的 ARDMS RDCS AE-Adult-Echocardiography 免費考試真題 (Q89-Q94):

問題 #89

Which of the following does the pulmonary capillary wedge pressure estimate?

- A. Left atrial pressure
- B. Left ventricular pressure
- C. Right ventricular pressure
- D. Right atrial pressure

答案: A

解題說明:

Comprehensive and Detailed Explanation From Exact Extract:

Pulmonary capillary wedge pressure (PCWP) is obtained by advancing a balloon-tipped catheter into a small branch of the pulmonary artery and inflating the balloon to "wedge" the catheter, thereby occluding forward blood flow and measuring the pressure distal to the occlusion. The measured pressure reflects the pressure in the pulmonary venous system, which closely approximates left atrial pressure (LAP) under normal conditions.

Since the left atrium receives pulmonary venous return before the blood enters the left ventricle, PCWP is a surrogate for LAP, which in turn reflects left ventricular end-diastolic pressure (LVEDP) in the absence of mitral valve disease or pulmonary venous obstruction. PCWP is widely used in clinical and echocardiographic contexts to estimate left heart filling pressures.

It does not estimate right atrial, right ventricular, or left ventricular pressures directly. Right atrial pressure is measured via central venous pressure, right ventricular pressure by catheterization, and left ventricular pressure by direct catheterization.

This concept is extensively discussed in the "Textbook of Clinical Echocardiography, 6e", Chapter on Hemodynamics and Doppler Assessment, with specific emphasis on the use of PCWP to estimate left atrial pressure#20:200-210Textbook of Clinical Echocardiography#.

問題 #90

Which patient positioning is best for obtaining the waveform seen in this image obtained by a non-imaging transducer?



- A. Laying on stomach with left arm raised
- B. Laying on left side
- C. Laying on back with chin down
- **D. Laying on right side**

答案：D

解題說明：

Comprehensive and Detailed Explanation From Exact Extract:

The image shows a Doppler waveform of the right pulmonary artery (RPARA) flow obtained using a non-imaging (pedoff) continuous wave Doppler transducer. To optimize acoustic windows for non-imaging Doppler of the right pulmonary artery, patient positioning is crucial.

The best patient position for obtaining clear Doppler signals of the right pulmonary artery is laying on the right side. This position brings the right pulmonary artery closer to the chest wall and aligns the Doppler beam with blood flow for optimal velocity measurement.

Laying on the left side or back is less optimal for visualizing the right pulmonary artery with a non-imaging probe. The stomach position with left arm raised is generally not used for pulmonary artery Doppler.

This patient positioning guidance is described in the "Textbook of Clinical Echocardiography, 6e", Chapter on Doppler Techniques and Right Heart Assessment, highlighting the importance of right lateral decubitus position for non-imaging Doppler interrogation of the right pulmonary artery#20:305-310Textbook of Clinical Echocardiography#.

問題 #91

Which kind of cardiac valve is a heterograft?

- A. One that is from one location to another in the same human
- **B. One that is from an animal to a human**
- C. One that is from pericardial tissue
- D. One that is from a human to another human

答案：B

解題說明：

A heterograft (also called xenograft) cardiac valve is derived from an animal species, commonly porcine or bovine, and implanted into a human. These bioprosthetic valves are treated to reduce immunogenicity.

Option A describes an allograft (homograft). Option B refers to bioprosthetic valves but does not specify species. Option C describes an autograft, such as the Ross procedure.

This classification is standard in cardiac surgery and echocardiography literature#16:Textbook of Clinical Echocardiography, 6ep.450-455##12:ASE Valve Prosthesis Guidelinesp.200-205#.

問題 #92

Which procedure is most appropriate for evaluation of an atrial septal defect in the presence of an atrial septal aneurysm?

- A. Cardiac catheterization
- B. Cardiac MRI
- C. Transesophageal echocardiogram
- D. Agitated saline contrast echocardiogram

答案：C

解題說明：

Transesophageal echocardiography (TEE) provides superior visualization of the atrial septum, especially in the presence of an atrial septal aneurysm, which may obscure transthoracic views. TEE allows detailed anatomic assessment of the atrial septal defect (ASD), its size, and associated structures.

Agitated saline contrast echo is useful for detecting right-to-left shunts but is limited in anatomical delineation in complex cases. Cardiac MRI and catheterization can provide complementary information but are not first-line for ASD evaluation when TEE is available.

ASE adult congenital heart disease guidelines and echocardiography texts emphasize TEE as the gold standard for ASD evaluation in this setting#12:ASE Adult Congenital Guidelinesp.405-410##16:Textbook of Clinical Echocardiography, 6p.570-575#.

問題 #93

When should a patient's systemic blood pressure be documented on an echocardiogram?

- A. With every echocardiogram
- B. When significant mitral regurgitation is present
- C. When evidence of pulmonary hypertension is detected
- D. When significant aortic stenosis is present

答案：A

解題說明：

Systemic blood pressure should be documented during every echocardiogram because blood pressure influences cardiac loading conditions, hemodynamics, and interpretation of valvular lesions and ventricular function.

Blood pressure affects Doppler velocities, gradients across valves, and myocardial performance; therefore, it is essential to record it routinely to interpret echocardiographic findings accurately.

This guideline is stated in the "Textbook of Clinical Echocardiography, 6e", Chapter on Echocardiographic Examination Standards and Reporting#20:15-20Textbook of Clinical Echocardiography#.

問題 #94

.....

Fast2test 培訓資源是個很了不起的資源網站，包括了ARDMS 的 AE-Adult-Echocardiography 考試材料，研究材料，技術材料。認證培訓和詳細的解釋和答案。還有完善的售後服務，我們對所有購買 AE-Adult-Echocardiography 題庫學習資料的客戶提供跟蹤服務，在你購買 AE-Adult-Echocardiography 題庫學習資料后的半年內，享受免費升級題庫學習資料的服務。如果在這期間，ARDMS AE-Adult-Echocardiography 的考試知識點發生變動，我們會在第一時間更新相關題庫學習資料，並免費提供給你下載。

AE-Adult-Echocardiography題庫分享：<https://tw.fast2test.com/AE-Adult-Echocardiography-premium-file.html>

- AE-Adult-Echocardiography考題免費下載 ☐ AE-Adult-Echocardiography證照資訊 ☐ AE-Adult-Echocardiography證照資訊 ☐ www.newdumpsdf.com ☐ 上搜索 ☐ AE-Adult-Echocardiography ☐ 輕鬆獲取免費下載AE-Adult-Echocardiography考試內容
- 快速下載的AE-Adult-Echocardiography真題 |第一次嘗試輕鬆學習並通過考試並且有效的AE-Adult-Echocardiography: AE Adult Echocardiography Examination ☐ 免費下載☐ AE-Adult-Echocardiography ☐ 只需在⇒ www.newdumpsdf.com ⇐上搜索AE-Adult-Echocardiography權威考題
- 選擇我們高效率的值得信賴的AE-Adult-Echocardiography真題: AE Adult Echocardiography Examination, ARDMS AE-Adult-Echocardiography考試對您來說不再難 ☐ 在 { www.newdumpsdf.com } 上搜索“ AE-Adult-Echocardiography ”並獲取免費下載AE-Adult-Echocardiography權威考題

- 選擇我們高效率的值得信賴的AE-Adult-Echocardiography真題: AE Adult Echocardiography Examination, ARDMS AE-Adult-Echocardiography考試對您來說不再難 □ (www.newdumps.pdf.com) 上搜索 □ AE-Adult-Echocardiography □ 輕鬆獲取免費下載AE-Adult-Echocardiography套裝
- AE-Adult-Echocardiography考試心得 □ AE-Adult-Echocardiography最新試題 □ AE-Adult-Echocardiography考證 □ { www.newdumps.pdf.com } 上搜索 □ AE-Adult-Echocardiography □ 輕鬆獲取免費下載AE-Adult-Echocardiography資訊
- 最新AE-Adult-Echocardiography試題 □ AE-Adult-Echocardiography熱門證照 □ AE-Adult-Echocardiography最新試題 □ 進入「 www.newdumps.pdf.com 」搜尋 (AE-Adult-Echocardiography) 免費下載AE-Adult-Echocardiography考試心得
- 選擇AE-Adult-Echocardiography真題, 獲取AE Adult Echocardiography Examination的通行證 □ { www.pdfexamdumps.com } 網站搜索 ➡ AE-Adult-Echocardiography □ 並免費下載AE-Adult-Echocardiography熱門考古題
- 關於AE-Adult-Echocardiography真題: AE Adult Echocardiography Examination, 輕鬆通過考試 □ ➡ www.newdumps.pdf.com □ □ □ 最新 ▶ AE-Adult-Echocardiography ◀ 問題集合 AE-Adult-Echocardiography 認證
- AE-Adult-Echocardiography考證 □ AE-Adult-Echocardiography考題免費下載 □ AE-Adult-Echocardiography考證 □ 在 □ www.newdumps.pdf.com □ 搜索最新的 ➡ AE-Adult-Echocardiography □ 題庫最新AE-Adult-Echocardiography考題
- AE-Adult-Echocardiography認證 □ AE-Adult-Echocardiography證照資訊 □ AE-Adult-Echocardiography題庫分享 □ 到 ➡ www.newdumps.pdf.com ◀ 搜索 [AE-Adult-Echocardiography] 輕鬆取得免費下載AE-Adult-Echocardiography熱門考古題
- AE-Adult-Echocardiography題庫資料 □ 最新AE-Adult-Echocardiography試題 □ AE-Adult-Echocardiography考試重點 □ 免費下載 ➡ AE-Adult-Echocardiography ◀ 只需進入 ➡ tw.fast2test.com □ □ □ 網站AE-Adult-Echocardiography題庫資料
- courseguild.com, www.stes.tyc.edu.tw, www.stes.tyc.edu.tw, pct.edu.pk, www.stes.tyc.edu.tw, pct.edu.pk, www.stes.tyc.edu.tw, www.stes.tyc.edu.tw, hashnode.com, www.stes.tyc.edu.tw, Disposable vapes