

Fortinet's NSE7_LED-7.0 Exam Questions Provide the Most Realistic Practice with Accurate Answers

Fortinet NSE7_EFW-7.0 Practice Questions

Fortinet NSE 7 - Enterprise Firewall 7.0

Order our NSE7_EFW-7.0 Practice Questions Today and Get Ready to Pass with Flying Colors!



NSE7_EFW-7.0 Practice Exam Features | QuestionsTube

- Latest & Updated Exam Questions
- Subscribe to FREE Updates
- Both PDF & Exam Engine
- Download Directly Without Waiting

https://www.questionstube.com/exam/nse7_efw-7.0/

At QuestionsTube, you can read NSE7_EFW-7.0 free demo questions in pdf file, so you can check the questions and answers before deciding to download the Fortinet NSE7_EFW-7.0 practice questions. These free demo questions are parts of the NSE7_EFW-7.0 exam questions. Download and read them carefully, you will find that the NSE7_EFW-7.0 test questions of QuestionsTube will be your great learning materials online. Share some NSE7_EFW-7.0 exam online questions below.

What's more, part of that TrainingDumps NSE7_LED-7.0 dumps now are free: <https://drive.google.com/open?id=1KYWSp0mlmXGqEygIRuxVFvYsSNA-L1a>

TrainingDumps provides you with actual Fortinet NSE7_LED-7.0 in PDF format, Desktop-Based Practice tests, and Web-based Practice exams. These 3 formats of Fortinet NSE7_LED-7.0 exam preparation are easy to use. This is a Printable NSE7_LED-7.0 PDF dumps file. The Fortinet NSE7_LED-7.0 PDF dumps enables you to study without any device, as it is a portable and easily shareable format.

Fortinet NSE7_LED-7.0, also known as the Fortinet NSE 7 - LAN Edge 7.0 exam, is a certification that validates an individual's knowledge and skills in securing LAN edge devices such as switches, routers, and access points. NSE7_LED-7.0 exam covers topics such as VLANs, DHCP, NAT, VPN, Firewall policies, and more. Fortinet NSE 7 - LAN Edge 7.0 certification is essential for network administrators and security professionals who want to ensure the security of their organization's LAN edge network infrastructure.

Fortinet NSE7_LED-7.0 Exam consists of multiple-choice questions and simulations that test the candidate's knowledge of Fortinet's security solutions. NSE7_LED-7.0 exam covers a wide range of topics, including network security design, implementation, and configuration, Fortinet's security solutions, and troubleshooting. NSE7_LED-7.0 exam is designed to evaluate the candidate's ability to design and implement Fortinet's security solutions in a real-world scenario.

2025 Latest NSE7_LED-7.0 – 100% Free Test Torrent | NSE7_LED-7.0 Reliable Test Duration

TrainingDumps gives a guarantee to our customers that they can pass the Fortinet NSE7_LED-7.0 Certification Exam on the first try by preparing from the TrainingDumps and if they fail to pass it despite their efforts they can claim their payment back as per terms and conditions. TrainingDumps facilitates customers with a 24/7 support system which means whenever they get stuck somewhere they don't struggle and contact the support system which will assist them in the right way. A lot of students have prepared from practice material and rated it positively.

Fortinet NSE7_LED-7.0 (Fortinet NSE 7 - LAN Edge 7.0) Certification Exam is a test that is designed to assess a candidate's knowledge and skills when it comes to deploying, configuring, and managing Fortinet's LAN Edge solutions. Fortinet NSE 7 - LAN Edge 7.0 certification exam is aimed at individuals who are responsible for managing network security solutions in their organizations. It is a globally recognized certification that demonstrates the candidate's expertise in securing LAN edge environments.

Fortinet NSE 7 - LAN Edge 7.0 Sample Questions (Q45-Q50):

NEW QUESTION # 45

Refer to the exhibit.



```
FortiGate # diagnose test authserver radius FAC-Lab mschap2 student password
[1909] handle_req-Rcvd auth req 1288058912 for student in FAC-Lab opt=000000id prot=4
[466] __compose_group_list from req-Group 'FAC-Lab', type 1
[617] fnbandd_pop3_start-student
[505] __fnbandd_cfg_get_radius_list_by_server-Loading RADIUS server 'FAC-Lab'
[342] fnbandd_create_radius_socket-Opened radius socket 13
[342] fnbandd_create_radius_socket-Opened radius socket 14
[1392] fnbandd_radius_auth_send-Compose RADIUS request
[1352] fnbandd_rad_dns_cb-10.0.1.150->10.0.1.150
[1330] __fnbandd_rad_send-Sent radius req to server 'FAC-Lab': fd=13, IP=10.0.1.150(10.0.1.150:1812) code=1 id=2 len=180 us
er="student" using MS-CHAPv2
[320] radius_server_auth-Timer of rad 'FAC-Lab' is added
[33] create_auth_session-Total 1 server(s) to try
[359] fnbandd_auth_handle_radius_result-Timer of rad 'FAC-Lab' is deleted
[800] fnbandd_radius_auth_validate_pkt-RADIUS resp code 2
[320] extract_success_vsas-FORTINET attr, type 1, val SSLVPN
[1661] __radius_decode_mppe_key-Key len after decode 16
[1661] __radius_decode_mppe_key-Key len after decode 16

[1385] fnbandd_auth_handle_radius_result-->Result for radius svr 'FAC-Lab' 10.0.1.150(1) is 0
[266] find_matched_usr_grps-Skipped group matching
[217] fnbandd_comm_send_result-Sending result 0 (nid 0) for req 1288058912, len=2156
authenticate 'student' against 'mschap2' succeeded, server=primary assigned_rad_session_id=1288058912 session_timeout=0 se
cs idle_timeout=0 secs!
Group membership(s) - SSLVPN
```

Examine the debug output shown in the exhibit

Which two statements about the RADIUS debug output are true? (Choose two)

- A. User authentication failed
- B. User authentication succeeded using MSCHAP
- C. The user student belongs to the SSLVPN group
- D. The RADIUS server sent a vendor-specific attribute in the RADIUS response

Answer: B,C

Explanation:

Explanation

According to the exhibit, the debug output shows a RADIUS debug output from FortiGate. The output shows that FortiGate sent a RADIUS Access-Request packet to FortiAuthenticator with the username student and received a RADIUS Access-Accept packet from FortiAuthenticator with a Class attribute containing SSLVPN.

Therefore, option A is true because it indicates that the user student belongs to the SSLVPN group on FortiAuthenticator. The output also shows that FortiGate used MSCHAP as the authentication method and received a MS-MPPE-Send-Key and a MS-MPPE-Recv-Key from FortiAuthenticator. Therefore, option D is true because it indicates that user authentication succeeded using MSCHAP. Option B is false because user authentication did not fail, but rather succeeded. Option C is false because FortiAuthenticator did not send a vendor-specific attribute in the RADIUS response, but rather standard attributes defined by RFCs.

NEW QUESTION # 46

Exhibit.

```
config wireless-controller wtp-profile
edit "Main Networks - FAP-320C"
    set comment "Profile with standard networks"
    config platform
        set type 320C
    end
    set wan-port-mode wan-only
    set led-state enable
    set dtls-policy clear-text
    set max-clients 0
    set handoff-rssi 30
    set handoff-sta-thresh 30
    set handoff-roaming enable
    set ap-country GB
    set ip-fragment-preventing tcp-mss-adjust
    set tun-mtu-uplink 0
    set tun-mtu-downlink 0
    set split-tunneling-acl-path local
    set split-tunneling-acl-local-ap-subnet enable
    config split-tunneling-acl
        edit 1
            set dest-ip 192.168.5.0 255.255.255.0
        next
    end
    set allowaccess https ssh
    set login-passwd-change yes
    set lldp disable
```

Exhibit.

```

config radio-1
    set mode ap
    set band 802.11n,g-only
    set protection-mode disable
    unset powersave-optimize
    set amsdu enable
    set coexistence enable
    set short-guard-interval disable
    set channel-bonding 20MHz
    set auto-power-level disable
    set power-level 100
    set dtim 1
    set beacon-interval 100
    set rts-threshold 2346
    set channel-utilization enable
    set spectrum-analysis disable
    set wids-profile "default-wids-apsan-enabled"
    set darrp enable
    set max-clients 0
    set max-distance 0
config wireless-controller vap
    edit "Corporate"
        set ssid "Corporate"
        set passphrase ENC XXXX
        set schedule "always"
        set quarantine disable
    next
end

```

Refer to the exhibits

In the wireless configuration shown in the exhibits, an AP is deployed in a remote site and has a wireless network (VAP) called Corporate deployed to it. The network is a tunneled network; however, clients connecting to a wireless network require access to a local printer. Clients are trying to print to a printer on the remote site but are unable to do so. Which configuration change is required to allow clients connected to the Corporate SSID to print locally?

- A. Disable the Block Intra-SSID Traffic (intra-vap-privacy) setting on the SSID (VAP) profile
- **B. Configure split-tunneling in the vap configuration**
- C. Configure the printer as a wireless client on the Corporate wireless network
- D. Configure split-tunneling in the wtp-profile configuration

Answer: B

Explanation:

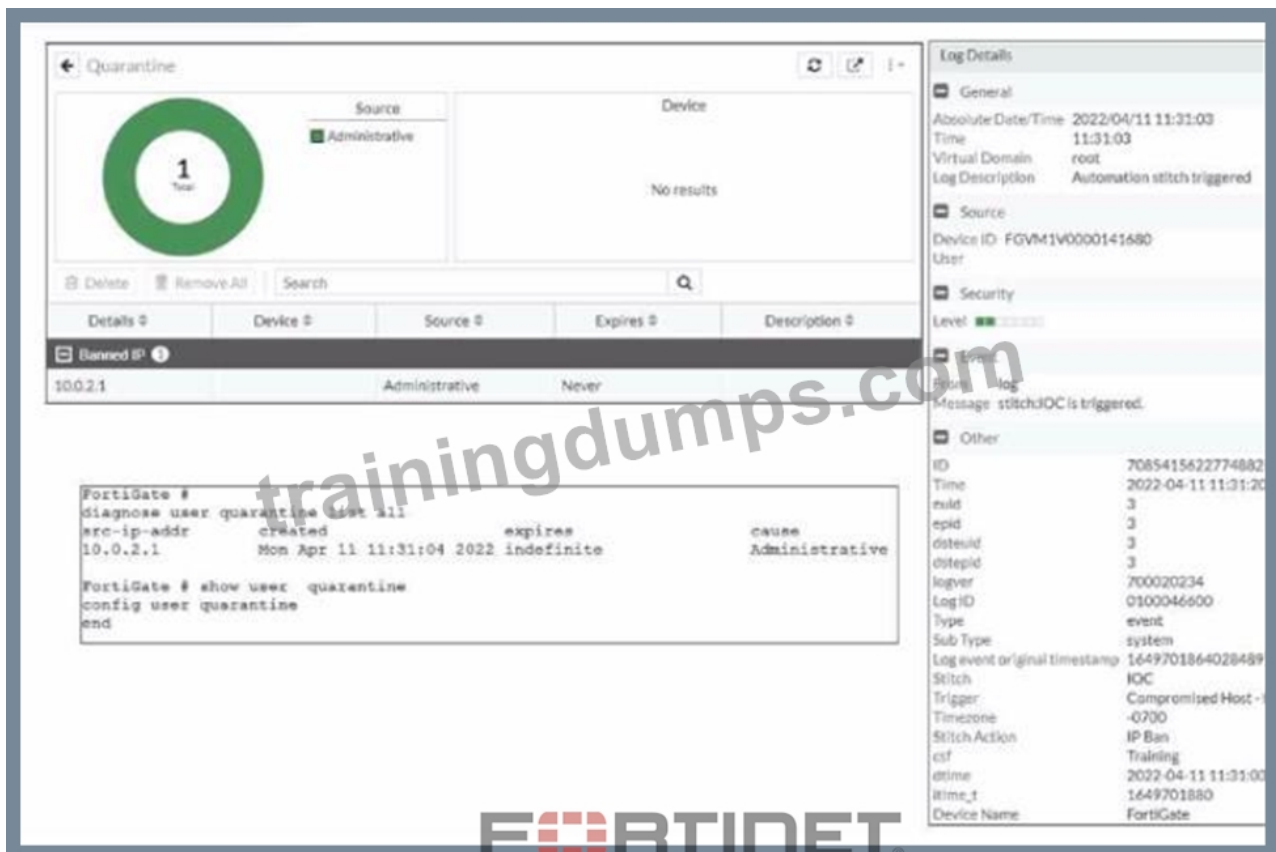
Explanation

According to the Fortinet documentation¹, "Split tunneling allows you to specify which traffic is tunneled to the FortiGate and which traffic is sent directly to the Internet. This can improve performance and reduce bandwidth usage." Therefore, by configuring split-tunneling in the vap configuration, you can allow the clients connected to the Corporate SSID to access both the corporate network and the local printer. Option B is incorrect because split-tunneling is configured at the vap level, not the wtp-profile level. Option C is incorrect because blocking intra-SSID traffic prevents wireless clients on the same SSID from communicating with each other, which is not related to accessing a local printer. Option D is unnecessary and impractical because the printer does not need to be a wireless client on the Corporate wireless network to be accessible by the clients.

NEW QUESTION # 47

Refer to the exhibit.

Examine the FortiGate logs, widget, and CLI output shown in the exhibit.



An administrator is testing the Security Fabric quarantine automation. The test device (10.0.2.2) is connected to a managed FortiSwitch device.

A few seconds after trying to access a malicious website from the test device, the test device can no longer access the internet and other VLANs in the network. However, the device is still able to access other devices in the same VLAN.

Based on the information shown in the exhibit, which modification should the administrator make to fix the problem?

- A. Change the quarantine mode to by VLAN mode.
- B. Configure a firewall policy on FortiGate to block the intra-VLAN traffic.
- C. Change the quarantine mode to by redirect mode.
- D. Enable the access layer quarantine action on the Quarantine_Devices automation stitch.

Answer: D

NEW QUESTION # 48

Refer to the exhibit.



Examine the FortiGate user group configuration and the Windows AD LDAP group membership information shown in the exhibit. FortiGate is configured to authenticate SSL VPN users against Windows AD using LDAP. The administrator configured the SSL VPN user group for SSL VPN users. However, the administrator noticed that both the student and j.smith users can connect to SSL VPN. Which change can the administrator make on FortiGate to restrict the SSL VPN service to the student user only?

- A. In the SSL VPN user group configuration change Type to Fortinet Single Sign-On (FSSO)
- B. In the SSL VPN user group configuration set Group Name to ::;=Domain users.CN-Users /DC=trainingAD, DC-training, DC=lab.
- C. In the SSL VPN user group configuration, change Name to cn=sslvpn, CN=users, DC=trainingAD, Detraining, DC-lab.
- **D. In the SSL VPN user group configuration set Group Name to CN=SSLVPN, CN="users, DC- trainingAD, DC-training, DC-lab**

Answer: D

Explanation:

According to the FortiGate Administration Guide, "The Group Name is the name of the LDAP group that you want to use for authentication. The name must match exactly the name of the LDAP group on the LDAP server." Therefore, option A is true because it will set the Group Name to match the LDAP group that contains only the student user. Option B is false because changing the Name will not affect the authentication process, as it is only a local identifier for the user group on FortiGate. Option C is false because setting the Group Name to Domain Users will include all users in the domain, not just the student user. Option D is false because changing the Type to FSSO will require a different configuration method and will not solve the problem.

NEW QUESTION # 49

A wireless network in a school provides guest access using a captive portal to allow unregistered users to self-register and access the network. The administrator is requested to update the existing configuration to provide captive portal authentication through a secure connection (HTTPS). Which two changes must the administrator make to enforce HTTPS authentication? (Choose two >

- **A. Update the captive portal URL to use HTTPS on FortiGate and FortiAuthenticator**
- B. Create a new SSID with the HTTPS captive portal URL
- C. Disable HTTP administrative access on the guest SSID to enforce HTTPS connection
- **D. Enable HTTP redirect in the user authentication settings**

Answer: A,D

Explanation:

Explanation

According to the FortiGate Administration Guide, "To enable HTTPS authentication, you must enable HTTP redirect in the user authentication settings. This redirects HTTP requests to HTTPS. You must also update the captive portal URL to use HTTPS on both FortiGate and FortiAuthenticator." Therefore, options B and D are true because they describe the changes that the administrator must make to enforce HTTPS authentication for the captive portal. Option A is false because creating a new SSID with the HTTPS captive portal URL is not required, as the existing SSID can be updated with the new URL. Option C is false because disabling HTTP administrative access on the guest SSID will not enforce HTTPS connection, but rather block HTTP connection.

NEW QUESTION # 50

.....

NSE7_LED-7.0 Reliable Test Duration: https://www.trainingdumps.com/NSE7_LED-7.0_exam-valid-dumps.html

- Real NSE7_LED-7.0 Exam Answers ☐ NSE7_LED-7.0 Labs ☐ NSE7_LED-7.0 Valid Test Materials ☐ Search on ☐ www.prep4away.com ☐ for [NSE7_LED-7.0] to obtain exam materials for free download ☐ NSE7_LED-7.0 Valid Test Registration
- Valid NSE7_LED-7.0 Premium VCE Braindumps Materials - Pdfvce ☐ Copy URL ☐ www.pdfvce.com ☐ open and search for ☐ NSE7_LED-7.0 ☐ to download for free ☐ Reliable NSE7_LED-7.0 Exam Pattern
- Frequent NSE7_LED-7.0 Updates ☐ Real NSE7_LED-7.0 Exam Answers ☐ Valid NSE7_LED-7.0 Test Cram ☐ Simply search for "NSE7_LED-7.0" for free download on ➡ www.examcollectionpass.com ☐ ☐ Relevant NSE7_LED-7.0 Questions
- New NSE7_LED-7.0 Study Materials ☐ New NSE7_LED-7.0 Study Notes ☐ NSE7_LED-7.0 Valid Test Materials ☐ Download **【 NSE7_LED-7.0 】** for free by simply entering ➡ www.pdfvce.com ☐ website ☐ Real NSE7_LED-7.0 Exam Answers
- NSE7_LED-7.0 Reliable Test Duration ☐ Instant NSE7_LED-7.0 Download ☐ New NSE7_LED-7.0 Study Notes ☐ ☐ Simply search for ⇒ NSE7_LED-7.0 ⇐ for free download on > www.free4dump.com < ☐ Frequent NSE7_LED-7.0 Updates
- Instant NSE7_LED-7.0 Download ☐ Interactive NSE7_LED-7.0 Questions ☐ Trustworthy NSE7_LED-7.0 Pdf ☐

Search for ✓ NSE7_LED-7.0 ☐✓☐ and easily obtain a free download on (www.pdfvce.com) ☐Real NSE7_LED-7.0 Exam Answers

- Hot NSE7_LED-7.0 Test Torrent Free PDF | Latest NSE7_LED-7.0 Reliable Test Duration: Fortinet NSE 7 - LAN Edge 7.0 ☐ Search for ➡ NSE7_LED-7.0 ☐☐☐ and download it for free immediately on ☐ www.torrentvce.com ☐ ☐
☐Reliable NSE7_LED-7.0 Exam Pattern
- 100% Pass 2025 Fortinet NSE7_LED-7.0 –High Hit-Rate Test Torrent ☐ Search for 《 NSE7_LED-7.0 》 and download exam materials for free through ➡ www.pdfvce.com ☐ ☐Valid NSE7_LED-7.0 Exam Topics
- NSE7_LED-7.0 Labs ☐ NSE7_LED-7.0 Test Dumps Demo ☐ Trustworthy NSE7_LED-7.0 Pdf ☐ Easily obtain free download of ➡ NSE7_LED-7.0 ☐ by searching on > www.torrentvalid.com < ☐Frequent NSE7_LED-7.0 Updates
- Features of Fortinet NSE7_LED-7.0 Desktop Practice Exam Software i Copy URL ➡ www.pdfvce.com ☐ open and search for 《 NSE7_LED-7.0 》 to download for free ☐Valid NSE7_LED-7.0 Exam Topics
- Reliable NSE7_LED-7.0 Exam Pattern ☐ Instant NSE7_LED-7.0 Download ☐ NSE7_LED-7.0 New Dumps Files ☐
☐ Copy URL ☐ www.pass4leader.com ☐ open and search for “NSE7_LED-7.0 ” to download for free ☐Interactive NSE7_LED-7.0 Questions
- motionentrance.edu.np, www.stes.tyc.edu.tw, www.stes.tyc.edu.tw, www.stes.tyc.edu.tw, myportal.utt.edu.tt, myportal.utt.edu.tt, myportal.utt.edu.tt, myportal.utt.edu.tt, myportal.utt.edu.tt, myportal.utt.edu.tt, myportal.utt.edu.tt, www.stes.tyc.edu.tw, tmwsacademy.online, www.stes.tyc.edu.tw, willzdeny.com.ng, myportal.utt.edu.tt, myportal.utt.edu.tt, myportal.utt.edu.tt, myportal.utt.edu.tt, myportal.utt.edu.tt, myportal.utt.edu.tt, myportal.utt.edu.tt, myportal.utt.edu.tt, Disposable vapes

P.S. Free 2025 Fortinet NSE7_LED-7.0 dumps are available on Google Drive shared by TrainingDumps:

<https://drive.google.com/open?id=1KYWSp0m1mXGqEygIRuxVFviYSsNA-L1a>