

Marvelous N10-009 Reliable Test Pattern for Real Exam



What's more, part of that PassExamDumps N10-009 dumps now are free: <https://drive.google.com/open?id=1LnnrH8RAmmiVAzEfmuU8rin6JH0njXuP>

The CompTIA N10-009 pdf questions learning material provided to the customers from PassExamDumps is in three different formats. The first format is PDF format which is printable and portable. It means it can be accessed from tablets, laptops, and smartphones to prepare for the CompTIA N10-009 Exam. The CompTIA N10-009 PDF format can be used offline, and candidates can even prepare for it in the classroom or library by printing questions or on their smart devices.

CompTIA N10-009 Exam Syllabus Topics:

Topic	Details
Topic 1	<ul style="list-style-type: none">• Network Implementation: For network technicians and junior network engineers, this section covers Characteristics of routing technologies, Configuration of switching technologies and features, and
Topic 2	<ul style="list-style-type: none">• Selection and configuration of wireless devices.
Topic 3	<ul style="list-style-type: none">• Cloud concepts and connectivity options, and Common networking ports.
Topic 4	<ul style="list-style-type: none">• Networking Concepts: For network administrators and IT support professionals, this domain covers

>> N10-009 Reliable Test Pattern <<

N10-009 Training Tools & Reliable N10-009 Test Answers

There are many merits of our product on many aspects and we can guarantee the quality of our N10-009 practice engine. Firstly, our experienced expert team compile them elaborately based on the real exam and our N10-009 study materials can reflect the popular trend in the industry and the latest change in the theory and the practice. Secondly, both the language and the content of our N10-009 Study Materials are simple, easy to be understood and suitable for any learners.

CompTIA Network+ Certification Exam Sample Questions (Q186-Q191):

NEW QUESTION # 186

SIMULATION

A network technician was recently onboarded to a company. A manager has tasked the technician with documenting the network and has provided the technician With partial information from previous documentation.

Instructions:

Click on each switch to perform a network discovery by entering commands into the terminal. Fill in the missing information using drop-down menus provided.

Answer:

Explanation:

See the Explanation for detailed information on this simulation

(Note: Ips will be change on each simulation task, so we have given example answer for the understanding) To perform a network discovery by entering commands into the terminal, you can use the following steps:

Click on each switch to open its terminal window.

Enter the command show ip interface brief to display the IP addresses and statuses of the switch interfaces.

Enter the command show vlan brief to display the VLAN configurations and assignments of the switch interfaces.

Enter the command show cdp neighbors to display the information about the neighboring devices that are connected to the switch.

Fill in the missing information in the diagram using the drop-down menus provided.

Here is an example of how to fill in the missing information for Core Switch 1:

The IP address of Core Switch 1 is 192.168.1.1.

The VLAN configuration of Core Switch 1 is VLAN 1: 192.168.1.0/24, VLAN 2: 192.168.2.0/24, VLAN 3: 192.168.3.0/24.

The neighboring devices of Core Switch 1 are Access Switch 1 and Access Switch 2.

The interfaces that connect Core Switch 1 to Access Switch 1 are GigabitEthernet0/1 and GigabitEthernet0/2.

The interfaces that connect Core Switch 1 to Access Switch 2 are GigabitEthernet0/3 and GigabitEthernet0/4.

You can use the same steps to fill in the missing information for Access Switch 1 and Access Switch 2.

NEW QUESTION # 187

A technician is troubleshooting a computer issue for a user who works in a new annex of an office building.

The user is reporting slow speeds and intermittent connectivity. The computer is connected via a Cat 6 cable to a distribution switch that is 492ft (150m) away. Which of the following should the technician implement to correct the issue?

- A. Install an access switch in the annex and run fiber to the distribution switch.
- B. Run a Cat 7 cable from the computer to the distribution switch.
- C. Enable the computer to support jumbo frames.
- D. Increase the bandwidth allocation to the computer.

Answer: A

Explanation:

The maximum recommended length for Ethernet cable runs is 100 meters (328 feet). At 150 meters, the Cat 6 cable is too long, causing signal degradation and connectivity issues. Running fiber from the distribution switch to an access switch in the annex will allow for reliable connectivity over longer distances, as fiber can cover greater distances without signal loss. (Reference: CompTIA Network+ Study Guide, Chapter on Network Cable Standards)

NEW QUESTION # 188

Which of the following, in addition to a password, can be asked of a user for MFA?

- A. Favorite color
- B. PIN
- C. Hard token
- D. Mother's maiden name

Answer: C

Explanation:

Multi-factor authentication (MFA) requires two or more different categories of authentication factors:

Something you know (password, PIN)

Something you have (smart card, hardware token)

Something you are (biometric)

The only valid second factor here is a hard token (e.g., a key fob generating one-time codes).

A . PIN is still "something you know," the same category as a password.

B . Favorite color is a weak knowledge-based factor, not a true second factor.

D . Mother's maiden name is also "something you know" and insecure.

Reference (CompTIA Network+ N10-009):

NEW QUESTION # 189

Which of the following disaster recovery concepts is calculated by dividing the total hours of operation by the total number of units?

- A. RTO
- B. RPO
- C. MTTR
- **D. MTBF**

Answer: D

Explanation:

* Introduction to Disaster Recovery Concepts:

* Disaster recovery involves strategies and measures to ensure business continuity and data recovery in the event of a disaster.

* Mean Time Between Failures (MTBF):

* MTBF is a reliability metric used to predict the time between failures of a system during operation. It is calculated by dividing the total operational time by the number of failures.

* Formula: $\text{MTBF} = \frac{\text{Total Operational Time}}{\text{Number of Failures}}$

* This metric helps in understanding the reliability and expected lifespan of systems and components.

* Example Calculation:

* If a server operates for 1000 hours and experiences 2 failures, the MTBF is:

$\text{MTBF} = \frac{1000 \text{ hours}}{2} = 500 \text{ hours}$

* Explanation of the Options:

* A. MTTR (Mean Time to Repair): The average time required to repair a system after a failure.

* B. MTBF (Mean Time Between Failures): The correct answer, representing the average time between failures.

* C. RPO (Recovery Point Objective): The maximum acceptable amount of data loss measured in time.

* D. RTO (Recovery Time Objective): The target time set for the recovery of IT and business activities after a disaster.

* Conclusion:

* MTBF is a crucial metric in disaster recovery and system reliability, helping organizations plan maintenance and predict system performance.

NEW QUESTION # 190

SIMULATION

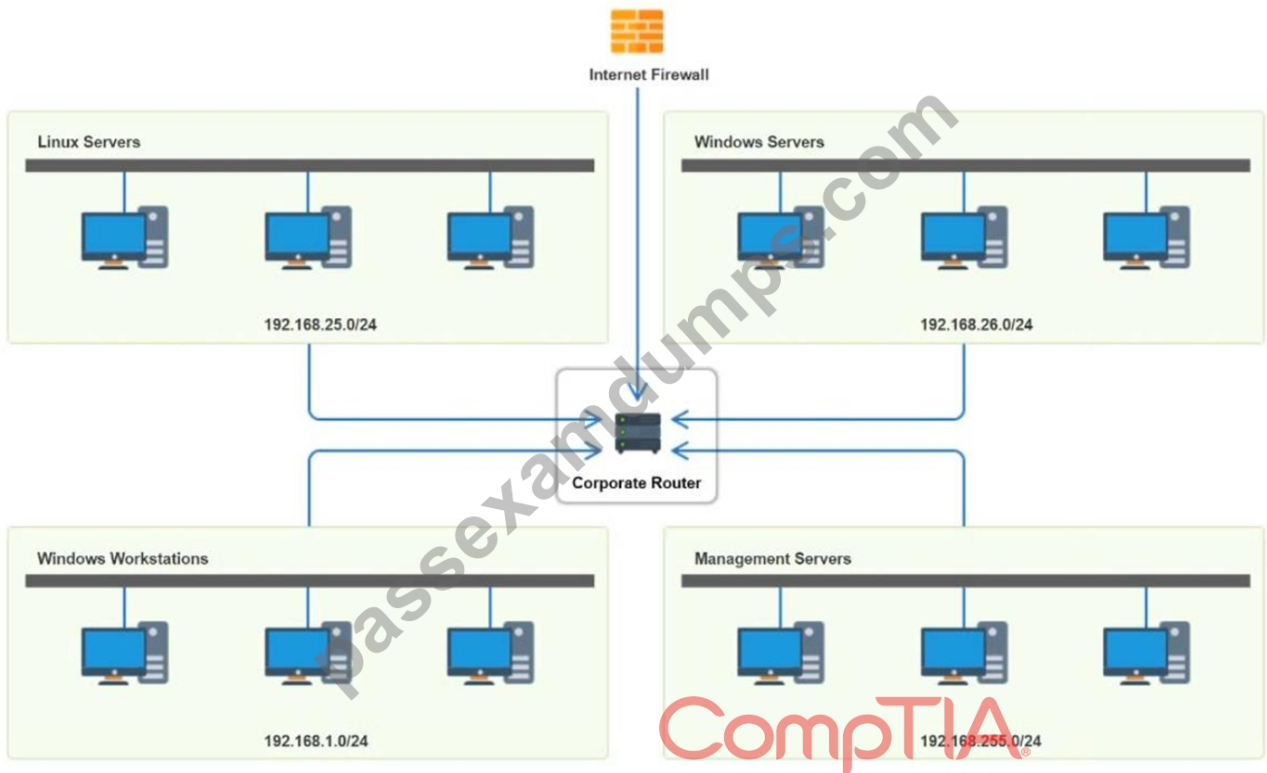
You have been tasked with implementing an ACL on the router that will:

1. Permit the most commonly used secure remote access technologies from the management network to all other local network segments
2. Ensure the user subnet cannot use the most commonly used remote access technologies in the Linux and Windows Server segments.
3. Prohibit any traffic that has not been specifically allowed.

INSTRUCTIONS

Use the drop-downs to complete the ACL

If at any time you would like to bring back the initial state of the simulation, please click the Reset All button.



Router Access Control List ✕					
Rule	Source	Destination	Protocol	Service	Action
1	192.168.1.0 192.168.25.0 192.168.255.0 192.168.26.0 Any	192.168.1.0 192.168.25.0 192.168.255.0 192.168.26.0 Any	TCP	SSH Telnet HTTP RDP VNC SMB Any	Allow Deny
2	192.168.1.0 192.168.25.0 192.168.255.0 192.168.26.0 Any	192.168.1.0 192.168.25.0 192.168.255.0 192.168.26.0 Any	TCP	SSH Telnet HTTP RDP VNC SMB Any	Allow Deny
3	192.168.1.0 192.168.25.0 192.168.255.0 192.168.26.0 Any	192.168.1.0 192.168.25.0 192.168.255.0 192.168.26.0 Any	TCP	SSH Telnet HTTP RDP VNC SMB Any	Allow Deny
4	192.168.255.0	192.168.26.0	TCP	SMB	Allow
5	192.168.255.0	Any	Any	Any	Deny
6	192.168.1.0 192.168.25.0 192.168.255.0 192.168.26.0 Any	192.168.1.0 192.168.25.0 192.168.255.0 192.168.26.0 Any	TCP	SSH Telnet HTTP RDP VNC SMB Any	Allow Deny
7	192.168.1.0 192.168.25.0 192.168.255.0 192.168.26.0 Any	192.168.1.0 192.168.25.0 192.168.255.0 192.168.26.0 Any	TCP	SSH Telnet HTTP RDP VNC SMB Any	Allow Deny
8	192.168.1.0	Any	Any	Any	Allow
9	192.168.1.0 192.168.25.0 192.168.255.0 192.168.26.0 Any	192.168.1.0 192.168.25.0 192.168.255.0 192.168.26.0 Any	Any	SSH Telnet HTTP RDP VNC SMB Any	Allow Deny

Answer:

Explanation:

See the answer and solution below

Explanation:

Router Access Control List					
Rule	Source	Destination	Protocol	Service	Action
1	192.168.255.0	192.168.26.0	TCP	SSH	Allow
2	192.168.255.0	192.168.25.0	TCP	SSH	Allow
3	192.168.255.0	192.168.1.0	TCP	SSH	Allow
4	192.168.255.0	192.168.26.0	TCP	SMB	Allow
5	192.168.255.0	Any	Any	Any	Deny
6	192.168.1.0	Any	TCP	RDP	Deny
7	192.168.1.0	Any	TCP	VNC	Deny
8	192.168.1.0	Any	Any	Any	Allow
9	Any	Any	Any	Any	Deny

NEW QUESTION # 191

.....

Getting ready for CompTIA N10-009 exam, do you have confidence to sail through the certification exam? Don't be afraid. PassExamDumps can supply you with the best practice test materials. And PassExamDumps CompTIA N10-009 Exam Dumps is the most comprehensive exam materials which can give your courage and confidence to pass N10-009 test that is proved by many candidates.

N10-009 Training Tools: <https://www.passexamdumps.com/N10-009-valid-exam-dumps.html>

- CompTIA N10-009 Pdf Questions - Outstanding Practice To your CompTIA Network+ Certification Exam Exam ☐ The page for free download of { N10-009 } on ➡ www.examcollectionpass.com ☐ will open immediately ☐ N10-009 Latest Test Format
- N10-009 Valid Test Vce Free ☐ Frenquent N10-009 Update ☐ N10-009 Customizable Exam Mode ☐ Open website (www.pdfvce.com) and search for ☐ N10-009 ☐ for free download ☐ N10-009 Latest Test Format
- CompTIA N10-009 Pdf Questions - Outstanding Practice To your CompTIA Network+ Certification Exam Exam ☐ ▶ www.examdumps.com ◀ is best website to obtain ✓ N10-009 ☐ ✓ ☐ for free download ☐ N10-009 Latest Test Format
- Types of Pdfvce CompTIA N10-009 Practice Questions ☐ Search for ➡ N10-009 ☐ and obtain a free download on ➡ www.pdfvce.com ☐ ☐ N10-009 Exam Sample Questions
- Hot N10-009 Reliable Test Pattern - Leading Provider in Qualification Exams - Practical N10-009 Training Tools ☐ Search for 《 N10-009 》 and obtain a free download on ➡ www.getvalidtest.com ☐ ☐ N10-009 Exam Certification Cost
- Free PDF 2025 CompTIA N10-009 -Reliable Reliable Test Pattern ☐ Search for ☐ N10-009 ☐ on ➤ www.pdfvce.com ☐ immediately to obtain a free download ☐ N10-009 Latest Exam Camp
- Latest N10-009 Exam Cram ☐ N10-009 Valid Test Vce Free ☐ N10-009 Customizable Exam Mode ☐ Download ➤ N10-009 ☐ for free by simply searching on ☐ www.passcollection.com ☐ ☐ N10-009 Exam Certification Cost
- N10-009 Latest Test Format ☐ N10-009 Valid Real Exam ☐ N10-009 Exam Certification Cost ☐ Enter “ www.pdfvce.com ” and search for ➡ N10-009 ☐ to download for free ☐ Reliable N10-009 Dumps Sheet
- N10-009 Valid Test Vce Free ☐ Excellect N10-009 Pass Rate ☐ N10-009 Latest Test Format ☐ Copy URL 「 www.lead1pass.com 」 open and search for { N10-009 } to download for free ➡ ☐ N10-009 Exams
- N10-009 Exams ☐ Excellect N10-009 Pass Rate ☐ N10-009 Valid Test Vce Free ☐ Download ▶ N10-009 ◀ for free by simply searching on 《 www.pdfvce.com 》 ↘ N10-009 Valid Real Exam
- Free PDF 2025 Unparalleled CompTIA N10-009: CompTIA Network+ Certification Exam Reliable Test Pattern ☐ Search for ☐ N10-009 ☐ and easily obtain a free download on 《 www.exams4collection.com 》 ☆ Frenquent N10-009 Update
- ncon.edu.sa, shortcourses.russellcollege.edu.au, qsengineer.com, a.zhxxq.cn, lms.anatoliaec.com, bjfc.0514tg.cn, ikanashop.com, www.52suda.com, heibafrconologycourse.com, www.stes.tyc.edu.tw, Disposable vapes

What's more, part of that PassExamDumps N10-009 dumps now are free: <https://drive.google.com/open?>

id=1LnrH8RAnmiVAzEfmuU8rin6JH0njXuP