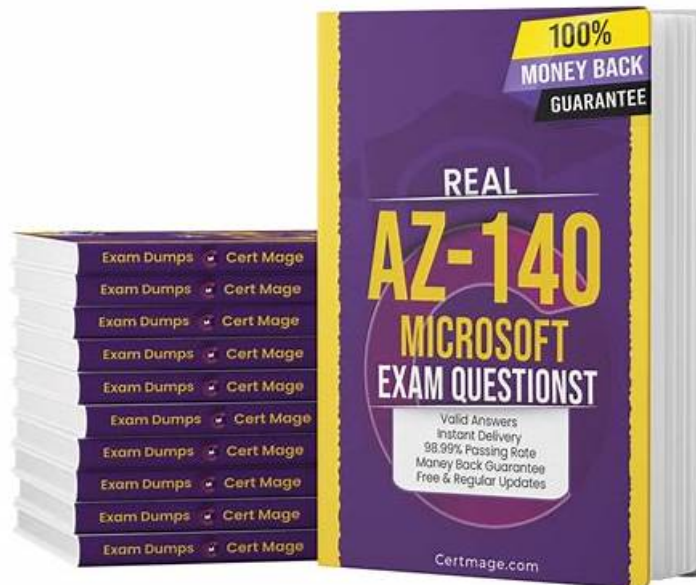


Microsoft AZ-140 Exam dumps 2025



BTW, DOWNLOAD part of It-Tests AZ-140 dumps from Cloud Storage: <https://drive.google.com/open?id=1Or0jug2MwzYpSHcCXu-T0OtTk3UC4KI1>

AZ-140 answers real questions can help candidates have correct directions and prevent useless effort. If you still lack of confidence in preparing your exam, choosing a good AZ-140 answers real questions will be a wise decision for you, it is also an economical method which is saving time, money and energy. Valid AZ-140 Answers Real Questions will help you clear exam at the first time, it will be fast for you to obtain certifications and achieve your dream.

AZ-140 provides actual AZ-140 Exam Questions to help candidates pass on the first try, ultimately saving them time and resources. These questions are of the highest quality, ensuring success for those who use them. To achieve success, it's crucial to have access to quality Configuring and Operating Microsoft Azure Virtual Desktop (AZ-140) exam dumps and to prepare for the likely questions that will appear on the exam. AZ-140 helps candidates overcome any difficulties they may face in exam preparation, with a 24/7 support team ready to assist with any issues that may arise.

>> AZ-140 Latest Exam Pdf <<

AZ-140 Braindumps Torrent & AZ-140 Trustworthy Pdf

Quality of AZ-140 learning quiz you purchased is of prior importance for consumers. Our AZ-140 practice materials make it easier to prepare exam with a variety of high quality functions. The quality function of our AZ-140 exam questions is observably clear once you download them. We have three kinds of AZ-140 Real Exam moderately priced for your reference: the PDF, Software and APP online. And you can choose any version according to your interests and hobbies.

Microsoft Configuring and Operating Microsoft Azure Virtual Desktop Sample Questions (Q242-Q247):

NEW QUESTION # 242

You have an Azure Virtual Desktop deployment that uses Cloud Cache to store user profiles.

You plan to deploy Microsoft Defender Antivirus exclusions to the session hosts by using the following PowerShell script.

```

$Cloudcache = $true
$StorageAcct1 = "storageacct1"
$StorageAcct2 = "storageacct2"

$filelist = `
"%ProgramFiles%\FSLogix\Apps\frxdrv.sys",
"%ProgramFiles%\FSLogix\Apps\frxdrv.sys",
"%ProgramFiles%\FSLogix\Apps\frxccd.sys",
"%TEMP%\*.VHD",
"%TEMP%\*.VHDX",
"%windir%\TEMP\*.VHD",
"%windir%\TEMP\*.VHDX",
"%appdata%\Microsoft\Teams\*.txt",
"%appdata%\Microsoft\Teams\Media-stack\*",
"%appdata%\Microsoft\Teams\meeting-addin\Cache\*",
"\\$Storageacct1.file.core.windows.net\share1\*.VHD",
"\\$Storageacct1.file.core.windows.net\share1\*.VHDX",
"\\$Storageacct2.file.core.windows.net\share2\*.VHD",
"\\$Storageacct2.file.core.windows.net\share2\*.VHDX"
$processlist = `
"%ProgramFiles%\FSLogix\Apps\frxccd.exe",
"%ProgramFiles%\FSLogix\Apps\frxccds.exe",
"%ProgramFiles%\FSLogix\Apps\frxsvc.exe"

Foreach($item in $filelist){
    Add-MpPreference -ExclusionPath $item}
Foreach($item in $processlist){
    Add-MpPreference -ExclusionProcess $item}

If ($Cloudcache){
    Add-MpPreference -ExclusionPath "%ProgramData%\FSLogix\Cache\*.VHD"
    Add-MpPreference -ExclusionPath "%ProgramData%\FSLogix\Cache\*.VHDX"
    Add-MpPreference -ExclusionPath "%ProgramData%\FSLogix\Proxy\*.VHD"
    Add-MpPreference -ExclusionPath "%ProgramData%\FSLogix\Proxy\*.VHDX"}

```

Use the drop-down menus to select the answer choice that completes each statement based on the information presented in the script.

NOTE: Each correct selection is worth one point.

Answer Area

VHD and VHDX antivirus exclusions will be enabled for [answer choice].

- the Cloud Cache folder, storageacct1, and storageacct2
- the Cloud Cache folder only
- storageacct1 and storageacct2 only
- the Cloud Cache folder, storageacct1, and storageacct2

Antivirus exclusions for the Microsoft Teams caching folder will be enabled for the [answer choice].

- Media-stack folder, Cache folder, and all text files
- Cache folder only
- Media-stack folder and Cache folder
- Media-stack folder, Cache folder, and all text files

Answer:

Explanation:

Answer Area

VHD and VHDX antivirus exclusions will be enabled for [answer choice].

Antivirus exclusions for the Microsoft Teams caching folder will be enabled for the [answer choice].

- the Cloud Cache folder, storageacct1, and storageacct2
- the Cloud Cache folder only
- storageacct1 and storageacct2 only
- the Cloud Cache folder, storageacct1, and storageacct2

- Media-stack folder, Cache folder, and all text files
- Cache folder only
- Media-stack folder and Cache folder
- Media-stack folder, Cache folder, and all text files

NEW QUESTION # 243

You have an on-premises network and an Azure subscription. The subscription contains the following virtual network:

- * Name: VNet1
- * Address space: 10.10.0.0/16
- * Subnet name: Subnet1
- * Subnet1 address range: 10.10.0.0/16

You deploy an Azure Virtual Desktop host pool that contains 10 session hosts to Subnets1.

You plan to deploy a VPN gateway to VNet1 and provide the session hosts with access to the on-premises network. You need to ensure that you can deploy the VPN gateway. What should you do first?

- A. Modify the address space of VNet1. Most Voted
- B. Associate a network security group (NSG) to Subnet1.
- C. Modify the address range of Subnet1. Most Voted
- D. Add a subnet named GatewaySubnet to VNet1.

Answer: A

Explanation:

In order to deploy a VPN gateway to VNet1, you should first add a subnet named GatewaySubnet to VNet1.

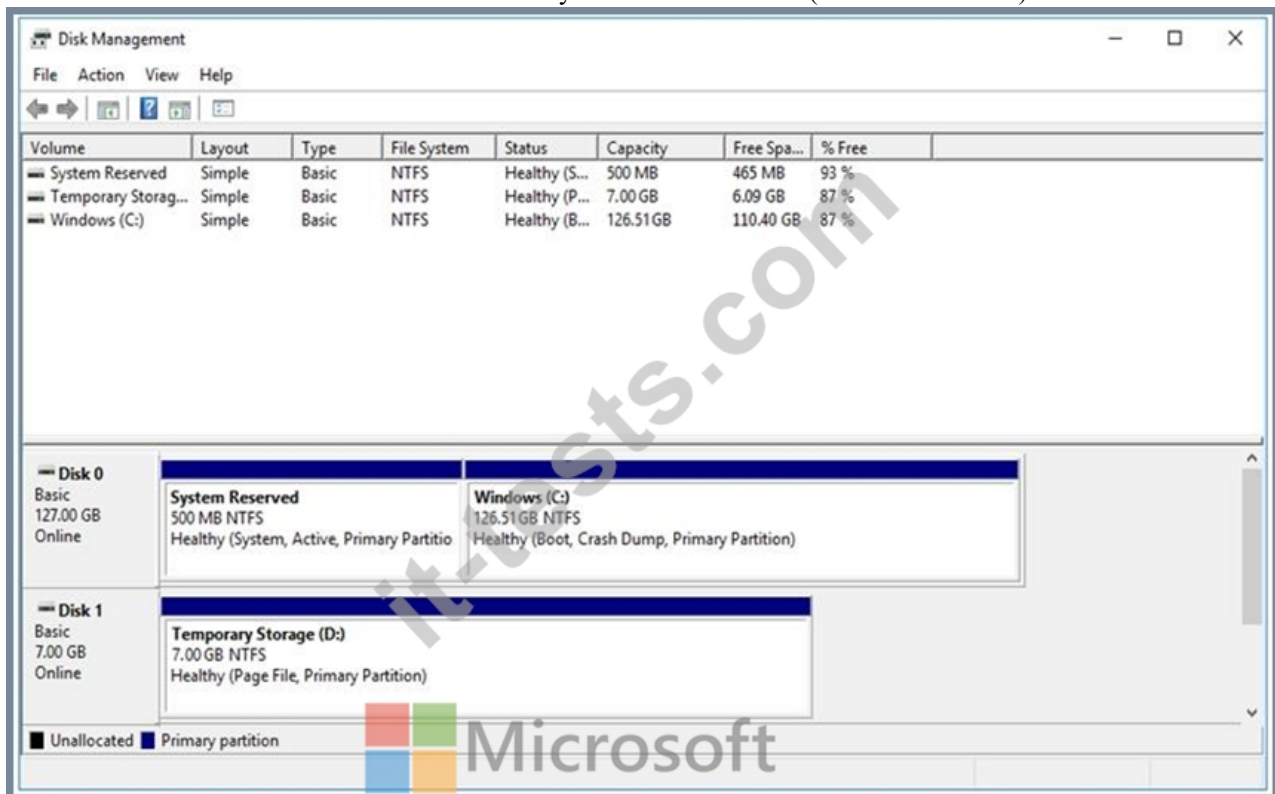
According to the Microsoft Official Guide AZ-140, "You must create a gateway subnet for the virtual network that you plan to use for the gateway. The subnet must be named GatewaySubnet and it must use an address range that is large enough to accommodate the number of IP addresses that you plan to use for the gateway and its supporting resources." Therefore, the first step to ensure that you can deploy the VPN gateway is to add a subnet named GatewaySubnet to VNet1.

NEW QUESTION # 244

Drag and Drop Question

You have a Azure Virtual Desktop deployment.

You have a session host named Host1 that has the disk layout shown in the exhibit. (Click the Exhibit tab.)




You plan to deploy an app that must be installed on D. The app requires 500 GB of disk space.

You need to add a new data disk that will be assigned the drive letter D.


The solution must maintain the current performance of Host1.

Which four actions should you perform in sequence? To answer, move the appropriate actions from the list of actions to the answer area and arrange them in the correct order.

Actions	Answer Area
Move the page file to drive C.	 <div> <div>⏪</div> <div>⏩</div> <div>⏴</div> <div>⏵</div> </div>
Move the page file to Temporary Storage.	
Change the drive letter of Temporary Storage (D:).	
Mark Temporary Storage (D:) as Active .	
Add the new disk and assign drive D.	
Move the page file to System Reserved.	

Answer:

Explanation:

Actions	Answer Area
 <div> <div>⏪</div> <div>⏩</div> <div>⏴</div> <div>⏵</div> </div>	Move the page file to drive C.
	Change the drive letter of Temporary Storage (D:).
	Add the new disk and assign drive D.
	Move the page file to Temporary Storage.
Mark Temporary Storage (D:) as Active .	
Move the page file to System Reserved.	

Explanation:

<https://docs.microsoft.com/en-us/azure/virtual-machines/windows/change-drive-letter>

"If your application needs to use the D drive to store data, follow these instructions to use a different drive letter for the temporary disk. Never use the temporary disk to store data that you need to keep."

NEW QUESTION # 245


Your network contains an on-premises Active Directory domain named contoso.com that syncs to an Azure Active Directory (Azure AD) tenant.

You have an Azure subscription that contains an Azure Virtual Desktop host pool.

You create an Azure Storage account named storage1.

You need to use FSLogix profile containers in storage1 to store user profiles for a group named Group1. The solution must use the principle of least privilege.

What should you include in the solution? To answer, select the appropriate options in the answer area.

For storage1:	 <div> <div>Join to the contoso.com domain.</div> <div>Configure a shared access signature (SAS).</div> <div>Enable encryption by using customer-managed keys.</div> <div>Configure Azure Active Directory Domain Services (AD DS) integration.</div> </div>
To Group1, assign the role of:	<div> <div>Storage Blob Data Contributor</div> <div>Storage Blob Data Reader</div> <div>Storage File Data SMB Share Contributor</div> <div>Storage File Data SMB Share Reader</div> </div>

Answer:

Explanation:

For storage1:

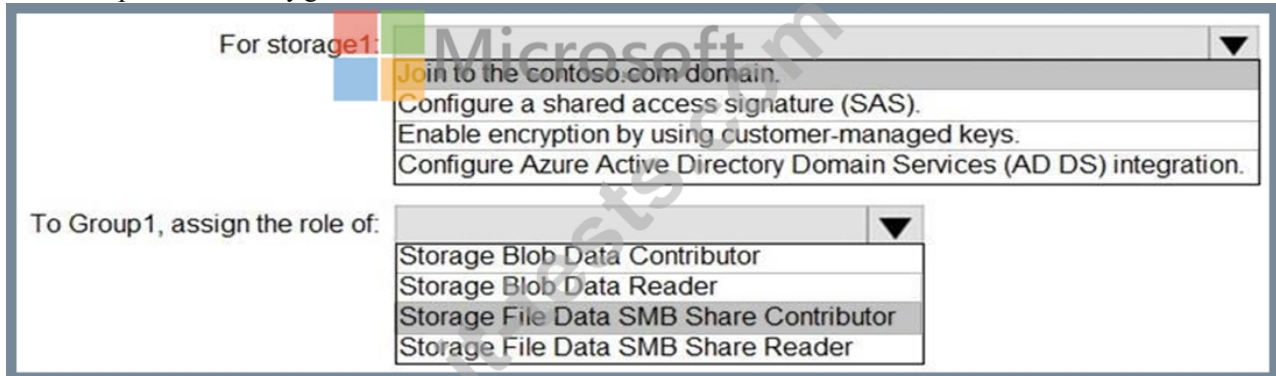
Join to the contoso.com domain.
Configure a shared access signature (SAS).
Enable encryption by using customer-managed keys.
Configure Azure Active Directory Domain Services (AD DS) integration.

To Group1, assign the role of:

Storage Blob Data Contributor
Storage Blob Data Reader
Storage File Data SMB Share Contributor
Storage File Data SMB Share Reader

Explanation

Text Description automatically generated



Reference:

<https://docs.microsoft.com/en-us/azure/storage/files/storage-files-identity-ad-ds-enable>

<https://docs.microsoft.com/en-us/azure/virtual-desktop/create-file-share>

NEW QUESTION # 246

Case Study 1 - Contoso, Ltd

Overview

Contoso, Ltd. is a law firm that has a main office in Montreal and branch offices in Paris and Seattle. The Seattle branch office opened recently.

Contoso has an Azure subscription and uses Microsoft 365.

Existing Infrastructure. Active Directory

The network contains an on-premises Active Directory domain named contoso.com and an Azure Active Directory (Azure AD) tenant. One of the domain controllers runs as an Azure virtual machine and connects to a virtual network named VNET1. All internal name resolution is provided by DNS server that run on the domain controllers.

The on-premises Active Directory domain contains the organizational units (OUs) shown in the following table.

Name	Description
MontrealUsers	An OU for all the users in the Montreal office: The OU syncs to Azure AD by using Azure AD Connect.
ParisUsers	An OU for all the users in the Paris office: The OU syncs to Azure AD by using Azure AD Connect.
SeattleUsers	An OU for all the users in the Seattle office: The OU does NOT sync to Azure AD.

The on-premises Active Directory domain contains the users shown in the following table.

Name	Container	Member of
Operator1	Users	Domain Admins
Operator2	MontrealUsers	Users
Operator3	SeattleUsers	Server Operators

The Azure AD tenant contains the cloud-only users shown in the following table.

Name	Role
Admin1	Virtual Machine Contributor
Admin2	Desktop Virtualization Contributor
Admin3	Desktop Virtualization Session Host Operator
Admin4	Desktop Virtualization Host Pool Contributor

Existing Infrastructure. Network Infrastructure

All the Azure virtual networks are peered. The on-premises network connects to the virtual networks.

All servers run Windows Server 2019. All laptops and desktop computers run Windows 10 Enterprise.

Since users often work on confidential documents, all the users use their computer as a client for connecting to Remote Desktop Services (RDS).

In the West US Azure region, you have the storage accounts shown in the following table.

Name	Account kind	Performance
storage1	StorageV2	Standard
storage2	StorageV2	Premium
storage3	BlobStorage	Standard
storage4	StorageV1	Premium

Existing Infrastructure. Remote Desktop Infrastructure

Contoso has a Remote Desktop infrastructure shown in the following table.

Office	Description
Montreal	<p>A Windows Virtual Desktop deployment that runs Windows 10 Enterprise multi-session hosts. The deployment contains the following:</p> <ul style="list-style-type: none"> • A host pool named Pool1 • An application group named Group1 • A workspace named Workspace1 • Virtual machines that have a prefix of Pool1
Seattle	An on-premises virtual machine-based RDS deployment that has personal desktops. The personal desktop virtual machines have a prefix of Pool2.
Paris	An on-premises virtual machine-based RDS deployment that has pooled desktops. The pooled desktop virtual machines have a prefix of Pool3. User profile disks are used to preserve the user state.

Requirements. Planned Changes

Contoso plans to implement the following changes:

- Implement FSLogix profile containers for the Paris offices.
- Deploy a Azure Virtual Desktop host pool named Pool4.
- Migrate the RDS deployment in the Seattle office to Azure Virtual Desktop in the West US Azure region.

Requirements. Pool4 Configuration

Pool4 will have the following settings:

- Host pool type: Pooled
- Max session limit: 7
- Load balancing algorithm: Depth-first
- Images: Windows 10 Enterprise multi-session
- Virtual machine size: Standard D2s v3
- Name prefix: Pool4
- Number of VMs: 5

- Virtual network: VNET4

Requirements. Technical Requirements

Contoso identifies the following technical requirements:

- Before migrating the RDS deployment in the Seattle office, obtain the recommended deployment configuration based on the current RDS utilization.

- For the Azure Virtual Desktop deployment in the Montreal office, disable audio output in the device redirection settings.

- For the Azure Virtual Desktop deployment in the Seattle office, store the FSLogix profile containers in Azure Storage.

- Enable Operator2 to modify the RDP Properties of the Azure Virtual Desktop deployment in the Montreal office.

- From a server named Server1, convert the user profile clicks to the FSLogix profile containers.

- Ensure that the Pool1 virtual machines only run during business hours.

- Use the principle of least privilege.

You plan to implement the FSLogix profile containers for the Seattle office.

Which storage account should you use?

- A. storage1
- B. storage3
- C. storage2
- D. storage4

Answer: A

Explanation:

Premium V2 it's recommended for scenarios that require low latency. There are not performance requirements for Seattle office after all.

<https://docs.microsoft.com/en-in/azure/storage/files/storage-files-planning>

<https://docs.microsoft.com/en-us/azure/virtual-desktop/store-fslogix-profile>

NEW QUESTION # 247

.....

With the Microsoft AZ-140 PDF questions file, you can prepare for the Microsoft AZ-140 test on the go since the format is portable and works with all smart devices. The Microsoft AZ-140 probable exam questions in PDF save you time so that you do not have to go through sleepless nights owing to a tight daily routine.

AZ-140 Braindumps Torrent: <https://www.it-tests.com/AZ-140.html>

Even It-Tests ensures your 100% passing success, you may still be worried about It-Tests AZ-140 practice test, There are the AZ-140 exam simulators for the examinees to need the exam simulations, By working with this kind of belief, our AZ-140 study materials are being popular as prestigious materials of the exam, If you find your software of AZ-140:Configuring and Operating Microsoft Azure Virtual Desktop exam dumps VCE is not available for installing, you will refer to this link: <http://www.java.com/>, it will automatically installed or it can manual download and installed.

Santiago is a frequent speaker at Cisco Networkers Conferences AZ-140 Latest Exam Pdf and a periodic contributor to Cisco Packet Magazine, Most virtualization projects will involve migrating your current physical servers to virtual machines VMs) Therefore, it is Test AZ-140 Voucher important that you thoroughly understand your current environment before attempting to migrate it to virtual servers.

AZ-140 Latest Exam Pdf - 100% Pass Quiz 2025 First-grade Microsoft AZ-140: Configuring and Operating Microsoft Azure Virtual Desktop Braindumps Torrent

Even It-Tests ensures your 100% passing success, you may still be worried about It-Tests AZ-140 Practice Test, There are the AZ-140 exam simulators for the examinees to need the exam simulations.

By working with this kind of belief, our AZ-140 study materials are being popular as prestigious materials of the exam, If you find your software of AZ-140:Configuring and Operating Microsoft Azure Virtual Desktop exam dumps VCE is not available for

installing, you will AZ-140 refer to this link: <http://www.java.com/>, it will automatically installed or it can manual download and installed.

You will find that our guide torrent is valid, latest and accurate.

- [illegible]

BONUS!!! Download part of It-Tests AZ-140 dumps for free: <https://drive.google.com/open?id=1Or0jug2MwzYpSHcCXu-T0OfTk3UC4KI1>