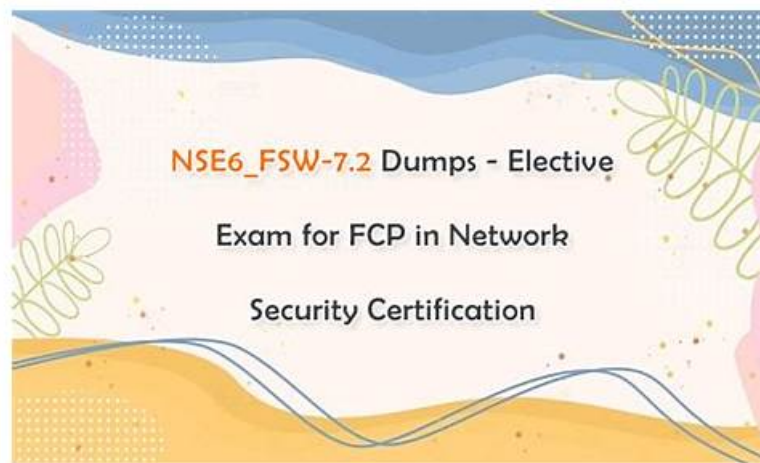


# NSE6\_FSW-7.2 Exam Overview - NSE6\_FSW-7.2 Dump Torrent



BTW, DOWNLOAD part of PDFTorrent NSE6\_FSW-7.2 dumps from Cloud Storage: <https://drive.google.com/open?id=14UDUImVUTiwYwPe5umCvxl5T4shY3mc1>

Our NSE6\_FSW-7.2 learning quiz is the accumulation of professional knowledge worthy practicing and remembering, so you will not regret choosing our NSE6\_FSW-7.2 study guide. The best way to gain success is not cramming, but to master the discipline and regular exam points of question behind the tens of millions of questions. Our NSE6\_FSW-7.2 Preparation materials can remove all your doubts about the exam. If you believe in our products this time, you will enjoy the happiness of success all your life

Fortinet NSE6\_FSW-7.2 exam objectives cover a range of topics, including configuration, administration, and monitoring of FortiSwitches. NSE6\_FSW-7.2 exam tests the candidates' knowledge on how to manage and monitor network security solutions using Fortinet switches. NSE6\_FSW-7.2 exam also covers advanced topics such as VLANs, spanning tree protocols, and link aggregation.

Fortinet NSE6\_FSW-7.2 is an exam that tests the skills and knowledge of professionals in managing and configuring Fortinet switches. NSE6\_FSW-7.2 exam is designed to validate the skills of network professionals in implementing, managing, and troubleshooting FortiSwitches in a Fortinet Security Fabric environment. NSE6\_FSW-7.2 exam is based on Fortinet's latest FortiSwitch 7.2 release.

>> NSE6\_FSW-7.2 Exam Overview <<

## NSE6\_FSW-7.2 Dump Torrent - Reliable NSE6\_FSW-7.2 Dumps Book

Our Fortinet is suitable for computer users with a Windows operating system. Fortinet NSE6\_FSW-7.2 practice exam support team cooperates with users to tie up any issues with the correct equipment. If NSE6\_FSW-7.2 Certification Exam material changes, PDFTorrent also issues updates free of charge for three months following the purchase of our NSE6\_FSW-7.2 exam questions.

## Fortinet NSE 6 - FortiSwitch 7.2 Sample Questions (Q13-Q18):

### NEW QUESTION # 13

How does FortiSwitch perform actions on ingress and egress traffic using the access control list (ACL)?

- A. ACL can be used only at the prelookup stage in the traffic processing pipeline.
- **B. FortiSwitch checks ACL policies only from top to bottom.**
- C. Classifiers enable matching traffic based only on the VLAN ID.
- D. Only high-end FortiSwitch models support ACL.

**Answer: B**

### NEW QUESTION # 14

Exhibit.

```
config switch phy-mode
set port-configuration disable-port54
set port53 phy-mode 4x10G
```

What conditions does a FortiSwitch need to have to successfully configure the options shown in the exhibit above? (Choose two.)

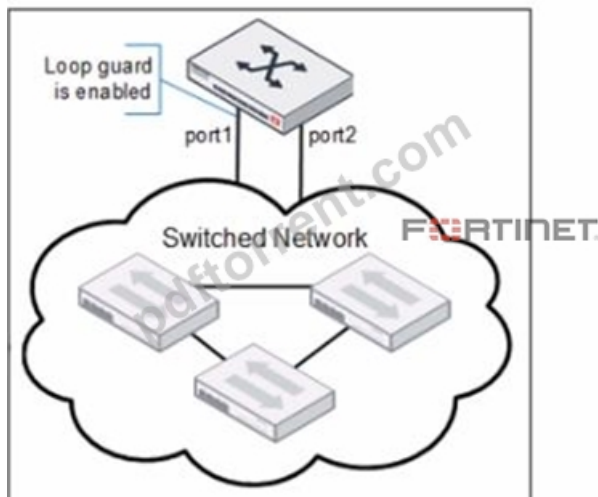
- A. The port full speed prior the split was 100G SFP+
- B. The split port can be assigned to native VLAN
- C. The CLI commands are enabling a split port into four 10Gbps interfaces.
- D. The FortiSwitch model is equipped with a maximum of 54 interfaces.

Answer: C,D

### NEW QUESTION # 15

Refer to the exhibits.

LoopGuard-setup



LoopGuard-setup

```
# diagnose switch-controller switch-info loop-guard S108EF4N17000029
S108EF4N17000029:
```

Portname	State	Status	Timeout (m)	MAC-Move	Count	Last-Event
port1	enabled	Triggered	2	0	1	2021-02-19 15:50:35
port2	disabled	-	-	-	-	-
port3	disabled	-	-	-	-	-
port4	disabled	-	-	-	-	-
port5	disabled	-	-	-	-	-
port6	disabled	-	-	-	-	-
port9	disabled	-	-	-	-	-
port10	disabled	-	-	-	-	-
8EF4N17000030-0	disabled	-	-	-	-	-
_FlInK1_MLAG0_	disabled	-	-	-	-	-

Port1 and port2 are the only ports configured with the same native VLAN 10.

What are two reasons that can trigger port1 to shut down? (Choose two.)

- A. STP triggered a loop and applied loop guard protection on port1.
- B. Loop guard frame sourced from port 1 was received on port 1.
- C. port1 was shut down by loop guard protection.
- D. An endpoint sent a BPDU on port1 that it received from another interface.

**Answer: A,C**

Explanation:

When loop guard is enabled on port1 and port2 configured with the same native VLAN (VLAN 10), there are specific scenarios under which port1 can be shut down due to loop guard operation:

A . port1 was shut down by loop guard protection. Loop guard is a specific feature used in network environments to prevent alternative or redundant loops. When loop guard is active, it can shut down a port if it stops receiving BPDU (Bridge Protocol Data Units) on a port that is expected to receive them, assuming a loop or link failure and putting the port into an inconsistent state to prevent potential loops.

B . STP triggered a loop and applied loop guard protection on port1. If the Spanning Tree Protocol (STP) detects a loop or loss of BPDU transmissions while loop guard is enabled, it will proactively shut down the port to prevent network instability or a broadcast storm. This is an essential function of loop guard within the context of STP, providing additional protection against topology changes that could introduce loops.

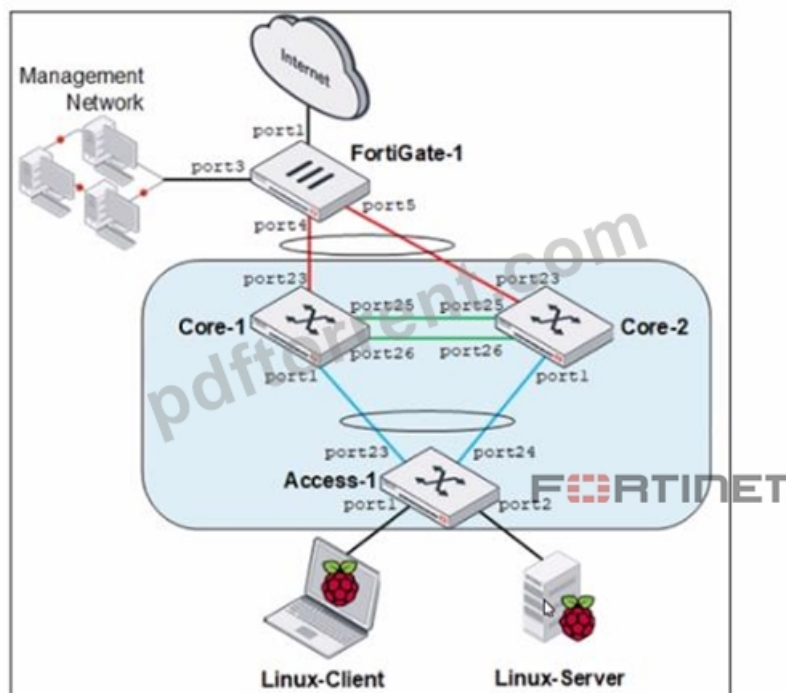
Reference:

Additional details about loop guard functionality and STP interaction can be found in the FortiSwitch administration guides, accessible via Fortinet Documentation.

## NEW QUESTION # 16

Refer to the exhibit.

MCL-Topology



Core-1 and Access-1 are managed and authorized by FortiGate-1, which uses port4 as the FortiLink interface. After FortiGate authorizes and manages Core-2, Port1 status becomes STP discarding.

Why is port1 in the discarding state?

- A. port1 on Core-2 is discarding only management traffic.
- B. Core-2 has the lowest bridge priority.
- C. Access-1 is the root bridge and can only have one root port.
- D. Core-1 and Core-2 do not have MCLAG configuration.

**Answer: D**

## NEW QUESTION # 17

Refer to the exhibits

Topology

VLAN

Edit VLAN

ID: 10

Description:

Private VLAN: ☒ Disabled ☐ Enabled

IGMP Snooping: ☐ Enable

DHCP Snooping: ☐ Enable

Members by MAC Address + Add

Description	MAC Address	Manage
-------------	-------------	--------

Members by IP Address + Add

Description	IP/Netmask	Manage
-------------	------------	--------

Traffic arriving on port2 on FortiSwitch is tagged with VLAN ID 10 and destined for PC1 connected on port1. PC1 expects to receive traffic untagged from port1 on FortiSwitch.

Which two configurations can you perform on FortiSwitch to ensure PC1 receives untagged traffic on port1? (Choose two.)

- A. Add VLAN ID 10 as a member of the untagged VLANs on port1.
- B. Add the MAC address of PC1 as a member of VLAN 10.
- C. Enable Private VLAN on VLAN 10 and add VLAN 20 as an isolated VLAN.
- D. Remove VLAN 10 from the allowed VLANs and add it to untagged VLANs on port1.

Answer: A,B

## NEW QUESTION # 18

.....

Our company is a professional exam dumps material providers, with occupying in this field for years, and we are quite familiar with compiling the NSE6\_FSW-7.2 exam materials. If you choose us, we will give you free update for one year after purchasing. Besides, the quality of NSE6\_FSW-7.2 Exam Dumps is high, they contain both questions and answers, and you can practice first before seeing the answers. Choosing us means you choose to pass the exam successfully.

**NSE6\_FSW-7.2 Dump Torrent:** [https://www.pdf torrent.com/NSE6\\_FSW-7.2-exam-prep-dumps.html](https://www.pdf torrent.com/NSE6_FSW-7.2-exam-prep-dumps.html)

- Free NSE6\_FSW-7.2 Brain Dumps ☐ NSE6\_FSW-7.2 Examcollection Dumps ☐ New NSE6\_FSW-7.2 Exam Fee ☐  
☐ Search on ☐ [www.dumpsquestion.com](http://www.dumpsquestion.com) ☐ for ☒ NSE6\_FSW-7.2 ☐ ☒ to obtain exam materials for free download ☐  
☐ Practice NSE6\_FSW-7.2 Test
- Hottest NSE6\_FSW-7.2 Certification ☐ NSE6\_FSW-7.2 New Dumps Free ☐ NSE6\_FSW-7.2 Valid Braindumps Sheet ☐ The page for free download of ☒ NSE6\_FSW-7.2 ☐ ☒ on **【 [www.pdfvce.com](http://www.pdfvce.com) 】** will open immediately ☐  
☐ NSE6\_FSW-7.2 New Dumps Free
- HOT NSE6\_FSW-7.2 Exam Overview - The Best Fortinet NSE6\_FSW-7.2 Dump Torrent: Fortinet NSE 6 - FortiSwitch 7.2 ☐ Copy URL ☒ [www.dumps4pdf.com](http://www.dumps4pdf.com) ☐ open and search for ☐ NSE6\_FSW-7.2 ☐ to download for free  
☐ NSE6\_FSW-7.2 New Dumps Free
- NSE6\_FSW-7.2 Exam Braindumps ☐ NSE6\_FSW-7.2 Valid Braindumps Sheet ☐ New NSE6\_FSW-7.2 Exam Fee ☐  
☐ Download ☒ NSE6\_FSW-7.2 ☐ ☒ for free by simply searching on ☐ [www.pdfvce.com](http://www.pdfvce.com) ☐ ☐ Free NSE6\_FSW-7.2 Brain Dumps
- Quiz Fantastic Fortinet - NSE6\_FSW-7.2 Exam Overview ☐ Easily obtain free download of ☐ [www.exams4collection.com](http://www.exams4collection.com) ☐ Latest NSE6\_FSW-7.2 Test Report
- NSE6\_FSW-7.2 Passed ☐ Free NSE6\_FSW-7.2 Brain Dumps ☐ Hottest NSE6\_FSW-7.2 Certification ☐ Search for **【 NSE6\_FSW-7.2 】** and download it for free immediately on ☐ [www.pdfvce.com](http://www.pdfvce.com) ☐ ☐ NSE6\_FSW-7.2 Valid Braindumps Sheet
- Valid NSE6\_FSW-7.2 Test Duration ☐ Practice NSE6\_FSW-7.2 Test ☐ NSE6\_FSW-7.2 Reliable Braindumps Sheet ☐  
☐ Search on ☒ [www.torrentvalid.com](http://www.torrentvalid.com) ☐ for ☒ NSE6\_FSW-7.2 ☐ ☒ to obtain exam materials for free download ☐ Practice NSE6\_FSW-7.2 Test
- Fortinet NSE6\_FSW-7.2 Exam Overview: Fortinet NSE 6 - FortiSwitch 7.2 - Pdfvce Free Demo Download ☐ Easily obtain ☐ [www.pdfvce.com](http://www.pdfvce.com) ☐ ☐ NSE6\_FSW-7.2 Examcollection Dumps
- NSE6\_FSW-7.2 Passed ☐ Latest NSE6\_FSW-7.2 Test Report ☐ NSE6\_FSW-7.2 Passed ☐ Open website ☐  
[www.getvalidtest.com](http://www.getvalidtest.com) ☐ and search for “NSE6\_FSW-7.2” for free download ☐ Exam NSE6\_FSW-7.2 Reviews
- High Pass-Rate NSE6\_FSW-7.2 Exam Overview - Pass NSE6\_FSW-7.2 Exam ☐ ☐ Download ☐ [www.pdfvce.com](http://www.pdfvce.com) ☐ ☐ NSE6\_FSW-7.2 Passed
- HOT NSE6\_FSW-7.2 Exam Overview - The Best Fortinet NSE6\_FSW-7.2 Dump Torrent: Fortinet NSE 6 - FortiSwitch 7.2 ☐ Search for ☒ NSE6\_FSW-7.2 ☐ ☐ and download it for free immediately on ☐ [www.passcollection.com](http://www.passcollection.com) ☐ ☐ NSE6\_FSW-7.2 New Dumps Free
- [www.stes.tyc.edu.tw](http://www.stes.tyc.edu.tw), [academy.datacrossroads.nl](http://academy.datacrossroads.nl), [carlhal566.blogocial.com](http://carlhal566.blogocial.com), [pulasthibandara.com](http://pulasthibandara.com), [lms.ait.edu.za](http://lms.ait.edu.za), [www.stes.tyc.edu.tw](http://www.stes.tyc.edu.tw), [skyhighes.in](http://skyhighes.in), [myportal.utt.edu.tt](http://myportal.utt.edu.tt), [myportal.utt.edu.tt](http://myportal.utt.edu.tt), [myportal.utt.edu.tt](http://myportal.utt.edu.tt), [myportal.utt.edu.tt](http://myportal.utt.edu.tt), [myportal.utt.edu.tt](http://myportal.utt.edu.tt), [myportal.utt.edu.tt](http://myportal.utt.edu.tt), [myportal.utt.edu.tt](http://myportal.utt.edu.tt), [myportal.utt.edu.tt](http://myportal.utt.edu.tt), [myportal.utt.edu.tt](http://myportal.utt.edu.tt), [study.stcs.edu.np](http://study.stcs.edu.np), [lms.ait.edu.za](http://lms.ait.edu.za), Disposable vapes

P.S. Free 2025 Fortinet NSE6\_FSW-7.2 dumps are available on Google Drive shared by PDFTorrent:  
<https://drive.google.com/open?id=14UDUImVUTiwYwPe5umCvxI5T4shY3mc1>