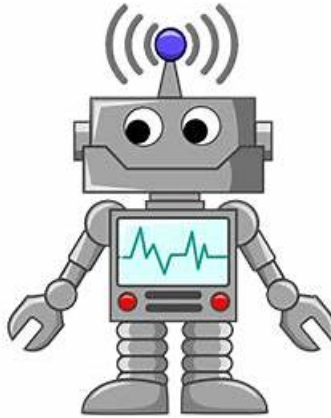


OGA-031 Exam Questions Answers | OGA-031 Test Vce



BONUS!!! Download part of Exam4Labs OGA-031 dumps for free: <https://drive.google.com/open?id=1qrZc2DaZWH4yJ6pk0C2QTWxnlAFBRj>

After passing the The Open Group OGA-031 exam you can gain more career opportunities and feel confident to pursue a rewarding career in your professional life. You can enhance your earning, get an instant promotion, can use the The Open Group OGA-031 Certification badge, and will be ready to gain more job roles.

The ArchiMate 3 Part 1 Certification Exam is designed for professionals who work in the field of enterprise architecture, solution architecture, or IT management. ArchiMate 3 Part 1 Exam certification is aimed at validating the candidate's knowledge and skills in using the ArchiMate modeling language to develop architecture artifacts and models that are aligned with business goals and objectives. OGA-031 exam covers various topics, including the ArchiMate modeling language, modeling concepts and techniques, modeling relationships and viewpoints, and modeling principles and patterns. By passing OGA-031 Exam, candidates can demonstrate their expertise in using ArchiMate 3.0 for enterprise architecture and enhance their credibility and career prospects.

To prepare for the OGA-031 (ArchiMate 3 Part 1) Certification Exam, you will need to study the ArchiMate 3 standard and its core concepts. The Open Group offers a variety of resources to help you prepare, including training courses, study guides, and practice exams. You can also find many third-party resources, such as books and online courses, that cover ArchiMate 3 in depth.

>> OGA-031 Exam Questions Answers <<

OGA-031 Test Vce & OGA-031 Valid Test Labs

How can you pass your exam and get your certificate in a short time? Our OGA-031 exam torrent will be your best choice to help you achieve your aim. According to customers' needs, our product was revised by a lot of experts; the most functions of our OGA-031 exam dumps are to help customers save more time, and make customers relaxed. If you choose to use our OGA-031 Test Quiz, you will find it is very easy for you to pass your OGA-031 exam in a short time. You just need to spend 20-30 hours on studying with our OGA-031 exam questions; you will have more free time to do other things.

The Open Group is a leading consortium of organizations that develops open standards for enterprise architecture, cloud computing, security, and other areas. Its ArchiMate 3 standard is widely used by organizations around the world. The OGA-031 (ArchiMate 3

Part 1) Certification Exam is an official certification offered by The Open Group. It is a globally recognized credential that demonstrates your expertise in ArchiMate 3.

The Open Group ArchiMate 3 Part 1 Exam Sample Questions (Q15-Q20):

NEW QUESTION # 15



Which of the following is the correct relationship between the bottom elements and the top element?

- A. Specialization
- **B. Aggregation**
- C. Realization
- D. Access

Answer: B

Explanation:

Based on the ArchiMate 3 documents or objectives, an aggregation relationship indicates that an element groups a number of other concepts. The aggregation relationship has been inspired by the aggregation relationship in UML class diagrams. Unlike composition, aggregation does not imply an existence dependency between the aggregating and aggregated concepts. The notation for an aggregation relationship is a solid line with an empty diamond at the end that points to the whole element. The diagram uses an aggregation relationship from the bottom elements to the top element to indicate that the top element groups the bottom elements. References: ArchiMate 3.2 Specification, Chapter 5 Relationships, Section 5.1 Structural Relationships 1; Structural Relationship: Part 3 - ArchiMate Resources for FREE 2.

NEW QUESTION # 16

Which of the following defines abstractions for sets of models aimed at a particular type of stakeholder?

- A. Model kinds
- **B. Architecture viewpoints**
- C. Architecture views
- D. Architecture descriptions

Answer: B

Explanation:

Comprehensive and Detailed in Depth Explanation: Architecture Viewpoints are predefined perspectives or templates that define how specific stakeholders view an architecture. They provide guidelines for structuring models to communicate effectively with different stakeholders.

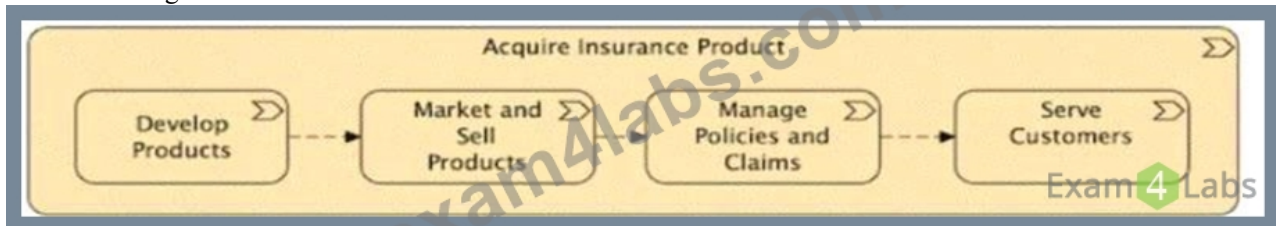
The ArchiMate 3.2 Specification describes Architecture Viewpoints as tools for filtering and structuring architectural representations to address stakeholder concerns.

References:

- * Archi User Guide
- * ArchiMate 3.2 Specification

NEW QUESTION # 17

Consider the diagram:



(A diagram showing "Acquire Insurance Product" decomposed into Develop Products, Market and Sell Products, Manage Policies and Claims, and Serve Customers.) Which of the following describes the diagram?

- A. A value stream for acquiring insurance products.
- B. A decomposition of the course of action for acquiring insurance products.
- C. A sequence of capabilities for acquiring insurance products.
- D. A set of processes for acquiring insurance products.

Answer: A

Explanation:

Comprehensive and Detailed In-Depth Explanation:

This diagram represents a value stream, which is a key concept in ArchiMate 3.2. A value stream describes how value is created and delivered across a sequence of activities. It is used to represent high-level business activities that contribute to the value creation for a stakeholder or customer.

* The Acquire Insurance Product at the top level represents an end-to-end flow.

* The sub-elements (Develop Products, Market and Sell Products, Manage Policies and Claims, and Serve Customers) depict how value is progressively built through different stages.

* The dashed arrows indicate a flow of value from one stage to the next, typical in value streams.

Analysis of Answer Choices:

#A. A set of processes for acquiring insurance products###Incorrect.

* Processes are typically lower-level activities depicted using process modeling, such as BPMN or a process flow diagram.

* ArchiMate 3.2 Specification, Section 6.3.2, differentiates business processes from value streams.

#B. A sequence of capabilities for acquiring insurance products###Incorrect.

* Capabilities represent the organization's abilities rather than sequential activities.

* In ArchiMate, capabilities are more static, focusing on what the organization can do, rather than how value is delivered over time.

* ArchiMate 3.2 Specification, Section 7.3, explains the distinction between capabilities and value streams.

#C. A value stream for acquiring insurance products###Correct Answer

* A value stream represents a series of high-level activities that create value for a customer or stakeholder.

* ArchiMate 3.2 Specification, Section 8.2.4, defines value streams as sequences that deliver value incrementally.

* This exact pattern (top-level action decomposed into a structured sequence of stages) is a value stream.

#D. A decomposition of the course of action for acquiring insurance products###Incorrect.

* Course of action is a concept in Strategy Layer of ArchiMate, referring to guidelines, policies, or directions rather than a flow of activities.

* This is not a strategic breakdown, but rather a flow of value creation.

* ArchiMate 3.2 Specification, Section 7.5, states that course of action is different from a structured value creation sequence.

#C. A value stream for acquiring insurance products.

References:

* ArchiMate 3.2 Specification: Sections 6.3.2 (Business Process), 7.3 (Capabilities), 8.2.4 (Value Streams), and 7.5 (Course of Action).

* Archi User Guide: Value Stream modeling and decomposition principles.

NEW QUESTION # 18

Consider the following symbol, which represents information about a transformation project at ArchiSurance_



Which statement correctly expresses the meaning of this symbol?

- A. The outcome is that customers are defecting to competitors with superior digital experiences.
- B. The concern is that customers are defecting to competitors with superior digital experiences
- C. The driver is that customers are defecting to competitors with superior digital experiences
- **D. The assessment is that customers are defecting to competitors with superior digital experiences**

Answer: D

Explanation:

Based on the ArchiMate 3 documents or objectives, an assessment represents the result of an analysis of the state of affairs of the enterprise with respect to some driver. An assessment may reveal strengths, weaknesses, opportunities, or threats for some area of interest. An assessment is a motivation element that can be associated with other motivation elements such as stakeholders, drivers, goals, outcomes, etc. The notation for an assessment is a rectangle with a rounded top and a horizontal line inside it. The symbol in this question is an assessment that expresses the analysis of ArchiSurance's situation.

References: ArchiMate 3.2 Specification, Chapter 7 Strategy Elements, Section 7.2 Motivation Elements 1; Assessment ArchiMate | QualiWare Center of Excellence 2.

NEW QUESTION # 19

What are external active structure elements also called?

- A. Resources
- B. Services
- C. Capabilities
- **D. Interfaces**

Answer: D

Explanation:

According to the ArchiMate 3.2 Specification¹, external active structure elements are also called interfaces. An interface represents a point of access where one or more services are offered by an active structure element to its environment¹. Therefore, the correct answer is B. Interfaces.

NEW QUESTION # 20

.....

OGA-031 Test Vce: <https://www.exam4labs.com/OGA-031-practice-torrent.html>

- OGA-031 Latest Dumps - OGA-031 Dumps Torrent - OGA-031 Valid Dumps □ Copy URL ⇒ www.pass4leader.com

BTW, DOWNLOAD part of Exam4Labs OGA-031 dumps from Cloud Storage: <https://drive.google.com/open?id=1qrZc2DaZWH4yJ6pk0C2QTWxnjIuAFBRj>