

# **Realistic Practice 1z0-591 Exam Online & Free PDF Quiz 2025 Oracle Dump Oracle Business Intelligence Foundation Suite 11g Essentials Check**

**Oracle 1z0-591**



**Oracle Business Intelligence Foundation Suite 11g  
Essentials  
Version: 4.6**

What's more, part of that PracticeTorrent 1z0-591 dumps now are free: [https://drive.google.com/open?id=1k-fPF-89\\_6a6QQ2LbekbRXX4xl12QXxn](https://drive.google.com/open?id=1k-fPF-89_6a6QQ2LbekbRXX4xl12QXxn)

In cyber age, it's essential to pass the 1z0-591 exam to prove ability especially for lots of office workers. Our company, with a history of ten years, has been committed to making efforts on developing 1z0-591 exam guides in this field. Since the establishment, we have won wonderful feedback from customers and ceaseless business and continuously worked on developing our 1z0-591 Exam prepare to make it more received by the public. Moreover, our understanding of the importance of information technology has reached a new level. Efforts have been made in our experts to help our candidates successfully pass 1z0-591 exam. Seldom dose the e-market have an authorized study materials for reference.

## **Oracle Business Intelligence Foundation Suite 11g Essentials 1z0-591 Exam**

Oracle Business Intelligence Foundation Suite 11g Essentials 1z0-591 Exam is related with Oracle Business Intelligence Foundation Suite 11g Certified Implementation Specialist Certification. This exam validates the Candidate ability to install OBIEE, build Dashboards and Dimensions, Facts and Hierarchies, and build and test a Repository.

Oracle 1Z1-591 (Oracle Business Intelligence Foundation Suite 11g Essentials) Certification Exam is a professional certification exam that validates an individual's skills and knowledge of Oracle Business Intelligence Foundation Suite 11g. Oracle Business

Intelligence Foundation Suite 11g Essentials certification exam is designed for IT professionals, business intelligence developers, database administrators, and other professionals who are responsible for implementing and managing Oracle Business Intelligence solutions. 1z0-591 Exam covers a broad range of topics related to Oracle Business Intelligence Foundation Suite 11g, including architecture, installation, configuration, security, and administration.

In order to be eligible to take the Oracle 1Z1-591 certification exam, candidates need to have a strong understanding of the fundamentals of the BI Suite products. They should have experience working with data models, creating reports, building dashboards, using the BI mobile application, and more. Additionally, candidates should have a solid understanding of the architecture and administration of these products.

>> Practice 1z0-591 Exam Online <<

## Dump 1z0-591 Check | 1z0-591 Online Test

The content and design of our 1z0-591 learning quiz are all perfect and scientific, and you will know it when you use this. Of course, we don't need you to spend a lot of time on our 1z0-591 exam questions. As long as you make full use of your own piecemeal time after 20 to 30 hours of study, you can go to the exam. The users of our 1z0-591 Study Materials have been satisfied with their results. I believe you are the next person to pass the exam!

## Oracle Business Intelligence Foundation Suite 11g Essentials Sample Questions (Q90-Q95):

### NEW QUESTION # 90

An organization has its employees' names in an Employees table, and information about their jobs in a Jobs table. However, an organization's employees can have multiple jobs, and the same job can be performed by multiple employees. This situation would result in a many to-many relationship between the Employees and Jobs tables. How can the many to-many relationship issue be resolved?

- A. By creating the many to many join in the physical model
- B. By creating a logical table source (LTS) that joins the Employees and Jobs tables
- C. By modeling the many to many relationship in the business model
- D. By creating a bridge table that represents one employee doing one job, with several rows for an employee who has several jobs

**Answer: D**

Explanation:

When you need to model many-to-many relationships between dimension tables and fact tables, you can create a bridge table that resides between the fact and the dimension tables. A bridge table stores multiple records corresponding to that dimension. In the Administration Tool, General tab in the Logical Table dialog box contains a check box that you can select to specify that a table is a bridge table.

A bridge table allows you to resolve many-to-many data relationships.

Reference; OBI Server Administration Server Guide, Version 10.1, Identifying Bridge Tables

### NEW QUESTION # 91

Which resource identifies the OBIEE Web Catalog (webcat)?

- A. Admin Server
- B. nqsconfig.ini
- C. instanceconfig.xml
- D. Identity Store
- E. RCU Schema

**Answer: A,D**

Explanation:

Explanation/Reference:

C: Oracle Business Intelligence authenticates users and get groups using an Oracle WebLogic Server authentication provider against user information held in an identity store.

Incorrect answers:

A: On 10g, Instanceconfig.xml is THE parameter file of the BI Presentation server. With the advent of 11g, instanceconfig.xml is also the configuration file of Oracle BI Scheduler. The instanceconfig.xml file stores the configuration settings that affect Oracle BI Presentation Services.

B: If you want to install the OBIEE Server you have to create some schemas in the database which will keep the OBIEE repository. For working, OBIEE needs some schemas to be created. This work is done automatically by using rcu (Repository Creation Utility).

In order to create the OBIEE schemas with the RCU, you must have installed an Oracle database (11g).

D: NQSCfg.ini is the main configuration file of BI Server and contains a lot of parameters.

The file is located in this directory :

11g: ORACLE\_INSTANCE/config/OracleBIServerComponent/coreapplication\_obisn All changes made to this file require that you restart the Oracle BI Server Service.

Note: OBIEE 10G/11G - The (Web|Presentation) Catalog (Webcat)

The Web Catalog becomes in 11g the Presentation Catalog.

publisher objects (such as reports and templates).

Each object is composed of two files:

\* its own file. For example, an analysis called Analysis 1 would be stored in a file named Analysis1.

\* a attributes file. For example, the analysis called Analysis1 would have a corresponding attributes file named Analysis1.atr.

The attributes file contains:

the object's full name,

access control list (ACL),

description,

and so on.

To access an object in the catalog, users must have appropriate ACL entries for that object. All objects in the catalog use ACL entries.

In 11g, the Everyone group has been replaced with the AuthenticatedUser role. The webcatalog is located:

on 11G: ORACLE\_INSTANCE/bifoundation/OracleBIPresentationServicesComponent/catalog/

## NEW QUESTION # 92

Which three components are part of a cluster server?

- A. Primary Cluster Controller
- B. Master Server
- C. Server request Controller
- D. Repository Publishing Directory
- E. Web Server

**Answer: A,B,E**

Explanation:

Oracle BI Cluster Server Components \*Oracle Business Intelligence Cluster Controller: The Cluster Controller determines which BI Server works in the cluster. It monitors the operation of servers in the cluster. The Cluster Controller is deployed in active-passive mode.

\*Clustered BI Servers: The BI Cluster Server feature supports up to 16 BI Servers in a network domain to act as a single server. BI Servers in the cluster share requests from multiple Oracle BI clients.

\*Master BI Server: A clustered Oracle Business Intelligence Server is designated as the Master BI Server. The Oracle Business Intelligence Administration Tool connects to the master BI Server for online repository changes.

\*Cluster Manager: The Cluster Manager is available in the Administration Tool when a repository is opened in online mode. The Cluster Manager enables Oracle BI Server clustered instances.

## NEW QUESTION # 93

Security Manager is used for \_\_\_\_\_.

- A. Setting permissions for particular users or application roles
- B. Setting up new Roles and Groups
- C. Setting permissions for individual objects in the Presentation Layer
- D. Setting up new Application Roles

**Answer: A**

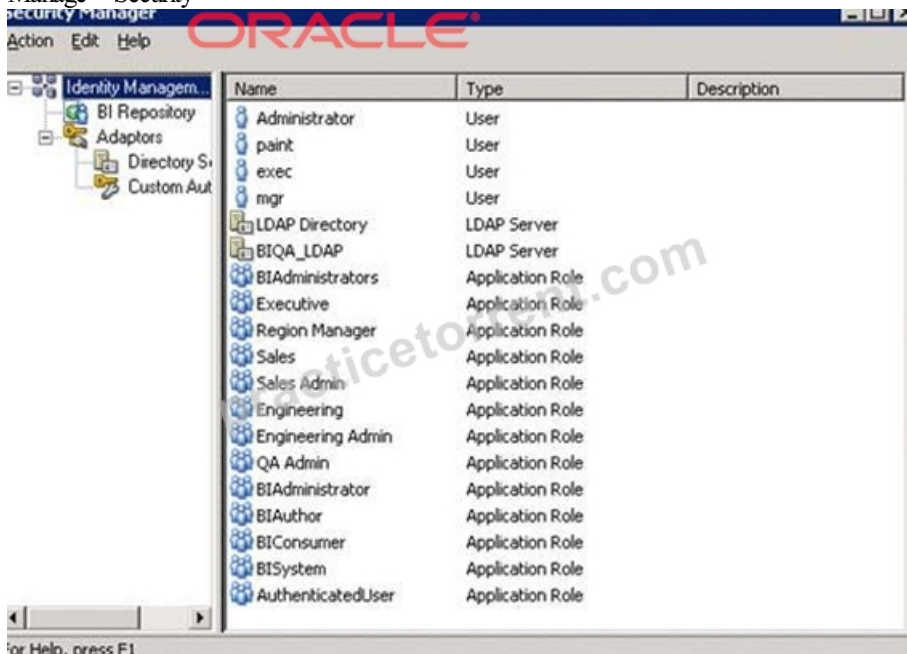
Explanation:

Explanation/Reference:

Security Manager - is used to setup users, groups, synchronize LDAP users and Groups, set access rights for Objects (tables, columns) and to control over when and what data a user can access.



Note: When you open the administration tool, you can reach the security manager by the Menu :  
Manage > Security



#### NEW QUESTION # 94

There are two aggregate tables that are available for query. How would they be mapped into the logical data model so queries can use them?

- A. By opening the two logical Table Source dialog boxes and mapping the appropriate levels in the Content tab
- B. By creating two new logical tables sources
- C. By creating one new Logical Table Source
- D. Both A and B

Answer: A

Explanation:

Explanation

B: Example:

General | Column Mapping | Content

Aggregation content, group by Logical Level

☒ Show mapped ☒ Show unmapped

Dimension	Logical Level
DEPARTMENTSDim	countries

2. Do the similar setting for dimension table

### NEW QUESTION # 95

• • • • •

**Dump 1z0-591 Check:** <https://www.practicetorrent.com/1z0-591-practice-exam-torrent.html>

- 2025 Latest PracticeTorrent 1z0-591 PDF Dumps and 1z0-591 Exam Engine Free Share: [https://drive.google.com/open?id=1kfPF-89\\_6a6QQ2LbekbRXX4xl12QXxn](https://drive.google.com/open?id=1kfPF-89_6a6QQ2LbekbRXX4xl12QXxn)