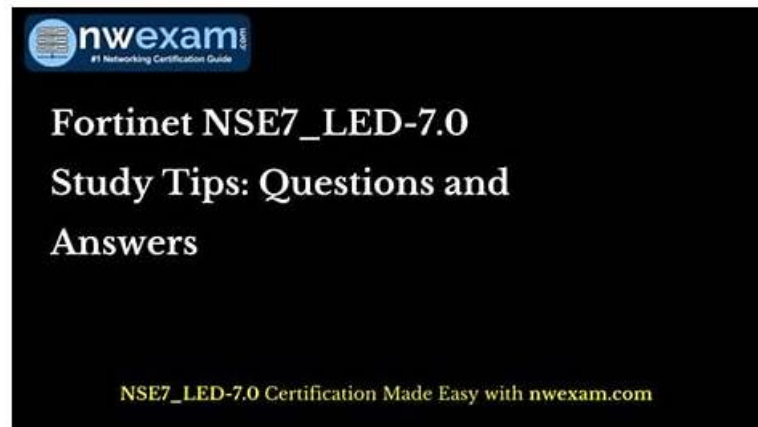


The Benefits of Preparing with the Fortinet NSE7_LED-7.0 Practice Test



DOWNLOAD the newest Itcertkey NSE7_LED-7.0 PDF dumps from Cloud Storage for free: <https://drive.google.com/open?id=1jnhVHDKqXO2wS4TFNjQPOgO4RI5V9Fbh>

As far as the top features of Itcertkey NSE7_LED-7.0 exam questions formats are concerned, the Fortinet NSE7_LED-7.0 desktop practice test software and web-based practice test software both are customizable and track your performance. These NSE7_LED-7.0 practice tests are specifically designed to give you a real-time NSE7_LED-7.0 Exam environment for preparation. You can trust both NSE7_LED-7.0 practice test software and start preparing today. The desktop software runs on Windows computers. The web-based NSE7_LED-7.0 practice exam is supported by all browsers and operating systems.

Fortinet NSE7_LED-7.0 exam covers a broad range of topics related to Fortinet Security Fabric and LAN Edge implementation. These topics include Fortinet Security Fabric, FortiGate, FortiManager, FortiAnalyzer, FortiSwitch, FortiAP, FortiNAC, and FortiPresence. NSE7_LED-7.0 Exam assesses the candidate's ability to design, configure, and manage secure LAN Edge networks using the Fortinet Security Fabric.

>> NSE7_LED-7.0 Latest Exam Materials <<

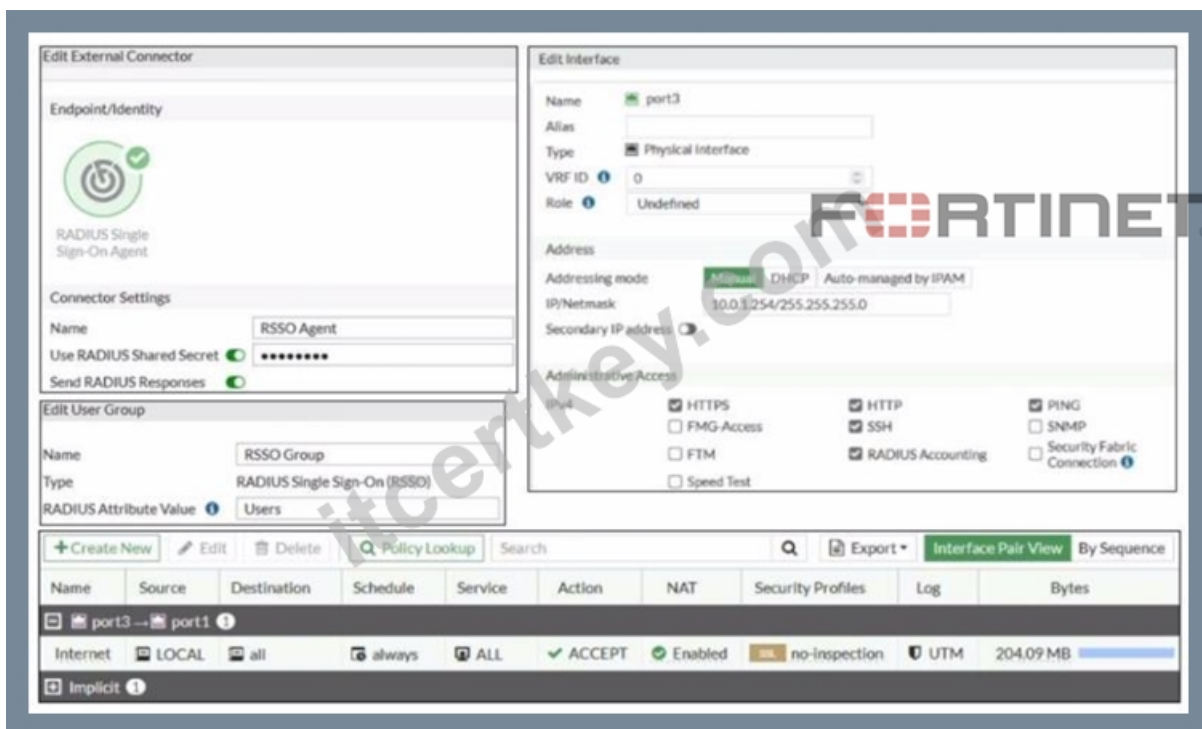
Test NSE7_LED-7.0 Score Report & NSE7_LED-7.0 Reliable Exam Tips

About your blurry memorization of the knowledge, our NSE7_LED-7.0 learning materials can help them turn to very clear ones. We have been abiding the intention of providing the most convenient services for you all the time on NSE7_LED-7.0 study guide, which is also the objection of us. We also have high staff turnover with high morale after-sales staff offer help 24/7. So our customer loyalty derives from advantages of our NSE7_LED-7.0 Preparation quiz.

Fortinet NSE 7 - LAN Edge 7.0 Sample Questions (Q17-Q22):

NEW QUESTION # 17

Refer to the exhibit



Examine the FortiGate RSSO configuration shown in the exhibit

FortiGate is configured to receive RADIUS accounting messages on port3 to authenticate RSSO users. The users are located behind port3 and the internet link is connected to port1. FortiGate is processing incoming RADIUS accounting messages successfully and RSSO users are getting associated with the RSSO Group user group. However, all the users are able to access the internet, and the administrator wants to restrict internet access to RSSO users only. Which configuration change should the administrator make to fix the problem?

- A. Enable Security Fabric Connection on port3
- B. Change the RADIUS Attribute Value setting to match the name of the RADIUS attribute containing the group membership information of the RSSO users
- C. Add RSSO Group to the firewall policy
- D. Create a second firewall policy from port3 to port1 and select the target destination subnets

Answer: C

Explanation:

Explanation

According to the exhibit, the firewall policy from port3 to port1 has no user group specified, which means that it allows all users to access the internet. Therefore, option B is true because adding RSSO Group to the firewall policy will restrict internet access to RSSO users only. Option A is false because changing the RADIUS Attribute Value setting will not affect the firewall policy, but rather the RSSO user group membership. Option C is false because enabling Security Fabric Connection on port3 will not affect the firewall policy, but rather the communication between FortiGate and other Security Fabric devices. Option D is false because creating a second firewall policy from port3 to port1 will not affect the existing firewall policy, but rather create a redundant or conflicting policy.

NEW QUESTION # 18

Refer to the exhibit. By default, FortiOS creates the following DHCP server scope for the FortiLink interface as shown in the exhibit.

What is the objective of the vci-string setting?

```

config system dhcp server
  edit 1
    set ntp-service local
    set default-gateway 169.254.1.1
    set netmask 255.255.255.0
    set interface "fortilink"
    config ip-range
      edit 1
        set start-ip 169.254.1.2
        set end-ip 169.254.1.254
      next
    end
    set vci-match enable
    set vci-string "FortiSwitch" "FortiExtender"
  next
end

```

- A. To ignore DHCP requests coming from FortiSwitch and FortiExtender devices
- B. To restrict the IP address assignment to devices that have FortiSwitch or FortiExtender as their hostname
- C. To reserve IP addresses for FortiSwitch and FortiExtender devices
- **D. To restrict the IP address assignment to FortiSwitch and FortiExtender devices**

Answer: D

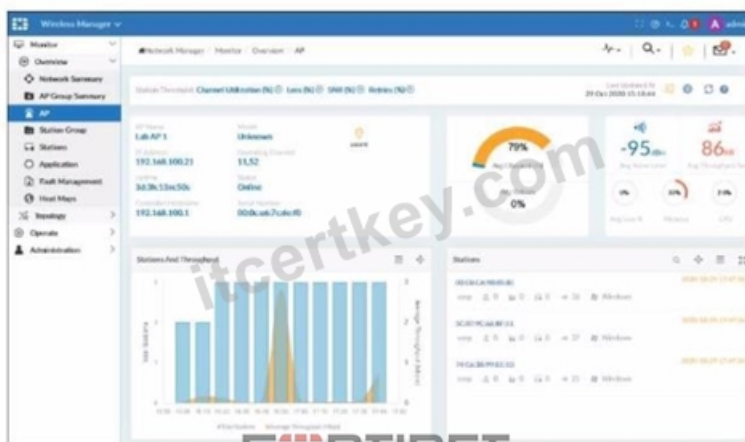
Explanation:

According to the exhibit, the DHCP server scope for the FortiLink interface has a vci-string setting with the value "Cisco AP c2700". This setting is used to match the vendor class identifier (VCI) of the DHCP clients that request an IP address from the DHCP server. The VCI is a text string that uniquely identifies a type of vendor device.

NEW QUESTION # 19

Refer to the exhibits showing AP monitoring information.

AP Overview



The exhibits show the status of an AP in a small office building. The building is located at the edge of a campus, and users are reporting issues with wireless network performance.

AP Status



Which configuration change would best improve the wireless network performance?

- A. Enable band steering on the AP.
- B. Disable lower data rates on the 5 GHz interface.
- C. Select an alternative channel for the 5 GHz interface.
- D. Relocate the AP to be closer to the clients.

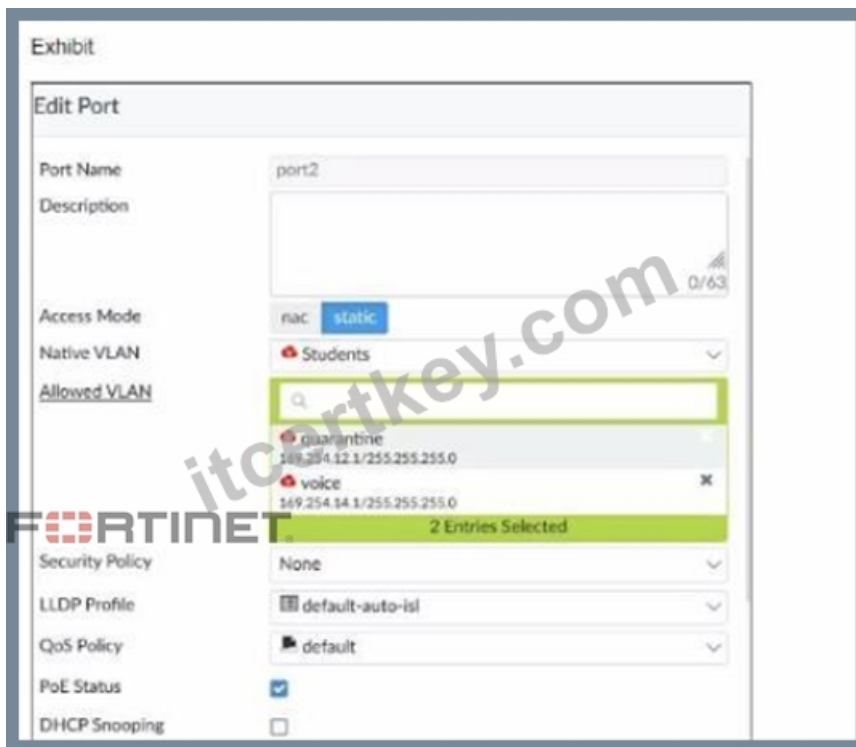
Answer: A

NEW QUESTION # 20

Refer to the exhibit.

#	Name	Type	VLAN ID
1	port1	Physical	
2	port2	Physical	
3	port3	Physical	
4	port5	Physical	
5	port6	Physical	
6	port7	Physical	
7	port8	Physical	
8	port9	Physical	
9	port10	Physical	
VLAN (8)			
10	_default (default.fortilink)	VLAN	1
11	quarantine (quarantine.fortilink)	VLAN	4093
12	rspan (rspan.fortilink)	VLAN	4092
13	voice (voice.fortilink)	VLAN	4091
14	video (video.fortilink)	VLAN	4090
15	onboarding (onboarding.fortilink)	VLAN	4089
16	nac_segment (nac_seg.fortilink)	VLAN	4088
17	Students	VLAN	10

Examine the FortiSwitch port configuration and the FortiGate interface configuration shown in the exhibit.



Based on the configuration shown in the exhibit, which two statements about how port2 handles tagged and untagged traffic are true? (Choose two.)

- A. Port2 assigns ingress untagged traffic to VLAN 10.
- B. Port2 accepts ingress tagged traffic for VLAN IDs 4091 and 4093 only.
- C. Port2 tags egress traffic for VLAN 10.
- D. Port2 accepts ingress untagged traffic for VLAN IDs 10, 4091, and 4093 only.

Answer: A,D

NEW QUESTION # 21

Where can FortiGate learn the FortiManager IP address or FQDN for zero-touch provisioning'?

- A. From an LDAP server using a simple bind operation
- B. From a DHCP server using options 240 and 241
- C. From a DNS server using A or AAAA records
- D. From a TFTP server

Answer: B

Explanation:

FG retrieves the FortiManager IP address or FQDN through DHCP options 240 or 241 respectively.

NEW QUESTION # 22

.....

By concluding quintessential points into Fortinet NSE 7 - LAN Edge 7.0 practice materials, you can pass the exam with the least time while huge progress. Our experts are responsible to make in-depth research on the exams who contribute to growth of our NSE7_LED-7.0 practice materials. Their highly accurate exam point can help you detect flaws on the review process and trigger your enthusiasm about the exam. What is more, NSE7_LED-7.0 practice materials can fuel your speed and the professional backup can relieve you of stress of the challenge.

Test NSE7_LED-7.0 Score Report: https://www.itcertkey.com/NSE7_LED-7.0_braindumps.html

- Fortinet NSE7_LED-7.0 test cram - Fortinet NSE 7 - LAN Edge 7.0 □ Simply search for > NSE7_LED-7.0 < for free download on 《 www.real4dumps.com 》 □ Valid NSE7_LED-7.0 Test Dumps

- [illegible]

What's more, part of that Itcertkey NSE7_LED-7.0 dumps now are free: <https://drive.google.com/open?id=1inhVHDKgXO2wS4TFNjOPOgO4Ri5V9Fbh>